

## WFP PALESTINE EMERGENCY RESPONSE

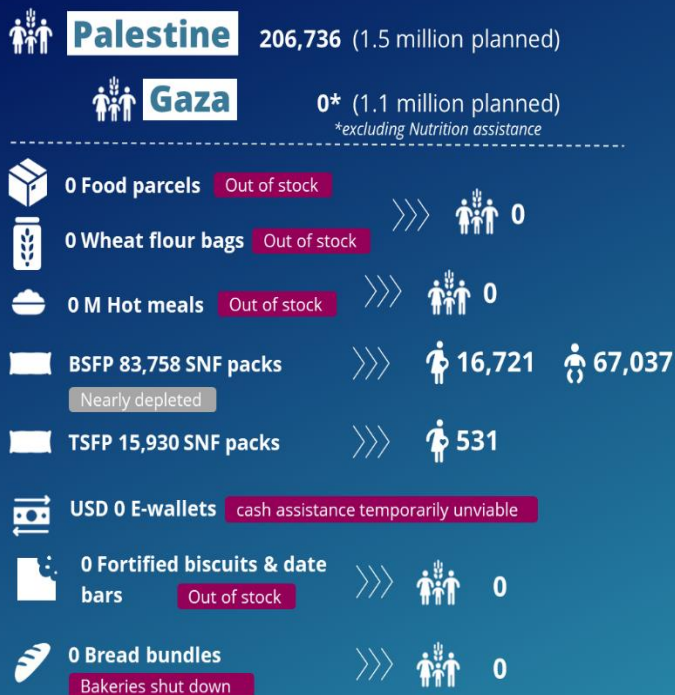
### External Situation Report 58

25 June 2025

## HIGHLIGHTS

- Gaza remains at the center of a deepening humanitarian crisis, with conditions deteriorating toward famine. One in five people is facing catastrophic hunger, while malnutrition is rising rapidly—nearly 90,000 children and women urgently require treatment. Starvation, displacement, and uncertainty define daily life for over two million people.
- WFP field monitors report that the desperation for food is overwhelming. Food convoys have been repeatedly intercepted by crowds, with reported violence and injuries linked to high numbers of people mobilising to find food in a highly kinetic military environment
- Further to an operational pause to assess the worsening risk climate, WFP is now scaling up the food response starting from 25 June for two weeks. The focus is on safe, community-based distributions and ensuring staff can operate securely. Meanwhile, in the West Bank, WFP continues to monitor growing access restrictions and economic pressures that could impact food assistance and market stability.

## JUNE IN NUMBERS Reporting period 1-21 June 2025



**WFP six-month net funding requirement**  
USD 334.2 M July to December 2025

An additional USD 34 million is urgently needed for shock-responsive CBT assistance in the West Bank.

Numbers are subject to change due to the finalization of the month's reporting figures from partners. The total beneficiaries figure accounts for overlap between people receiving more than one type of assistance. BSFP: Blanket Supplementary Feeding Programme; TSFP: Targeted Supplementary Feeding Programme; SNF: specialized nutritious food.

## SITUATION UPDATE

- [OCHA warns](#) of a worsening humanitarian situation in Gaza, with reports of civilians being killed and injured when seeking access to relief food. Fuel shortages threaten critical services including hospitals, water desalination, telecommunications. [New population displacement orders](#) in Khan Younis are obstructing access to hospitals and aid.
- WFP has received assurances from the Israeli Authorities for better access to deliver humanitarian assistance to Gaza, with additional measures in place to mitigate potential risk to beneficiaries and staff.
- On 24 June, President Trump [announced](#) a U.S.-brokered ceasefire between Iran and Israel. While a fragile ceasefire appears to be holding, tensions are high and the situation remains volatile.
- Global leaders, including the G7 and the UN Secretary-General, [continue to call](#) for “maximum restraint” to prevent regional escalation.
- Humanitarian agencies strive to ensure that international focus is not diverted from the looming famine in Gaza.
- Since the Iran-Israel escalation, fuel and movement restrictions in the West Bank have increased.

## WFP OPERATIONS

- Following a WFP pause in food convoy movements on 18 June, due to security and access concerns, WFP resumed food cargo transport in Gaza on 25 June. WFP aims to scale up to 20,000 mt of food over two weeks period to stabilise market conditions and reduce public anxiety. This is part of a broader UN drive towards improved access. Discussions continue to improve delivery arrangements, ensure safer distributions, and support humanitarian staff.

### General Food Assistance (GFA) in Gaza (1–21 June)

- All WFP commodities are offloaded before reaching final destination, due to the level of hunger and desperation in the community. The WFP team in Gaza stands ready to resume distributions closer to communities and reintroduce household assistance once conditions permit.
- Since early June, WFP's nutrition prevention response through **Blanket Supplementary Feeding Programme (BSFP)** has reached over 83,000 children under five and pregnant and breastfeeding women across 165 sites, while the nutrition treatment response through **Targeted Supplementary Feeding Programme (TSFP)** has supported more than 500 malnourished women. However, BSFP stocks of **lipid-based nutrient supplements (LNS-MQ)** are nearly depleted, putting continued support for vulnerable groups at risk. Despite partner coordination to address gaps, current nutrition stocks are sufficient for around 34,000 people, underscoring the urgent need for replenishment.

### General Food Assistance (GFA) in the West Bank (1–21 June)

- **WFP reached over 200,000 people in the West Bank with food vouchers, cash assistance and in-kind food support.**
- WFP will launch the second round of **Emergency Multi-Purpose Cash Assistance (EMPCA)** for 990 households in northern West Bank, introducing e-wallets for the first time in the area. In coordination with the Ministry of Social Development, WFP is also preparing an **anticipatory food voucher response** for vulnerable families in hunger hotspots and refugee camps. For **Bedouin communities**, a hybrid assistance model—continuing in-kind food but also introducing food vouchers—is set to begin in the third quarter of 2025, to better understand beneficiary preferences.

## SUPPLY CHAIN

- **Around 130,000 mt** of food are positioned in the region and ready to serve populations inside Gaza, if improved access is granted.
- Since 19 May, 1,022 trucks (798 WFP, 224 Logistics Cluster) have delivered 15,046 mt of WFP food and 5,336 partner pallets to Karam Abu Salem (Kerem Shalom) and Zikim (West Erez).
- Since 21 May, 824 trucks (693 WFP, 131 Logistics Cluster) have collected 10,691 mt and over 2,099 pallets inside Gaza. All convoys faced obstruction or were taken by civilians.
- 4,355 mt of WFP food and around 3,237 partner pallets remain pending collection at crossings.

## CLUSTERS AND COMMON SERVICES

### Food Security Sector (FSS)

- As of 22 June, 209,000 meals were prepared and delivered by 12 partners through 45 kitchens. Scale-up depends on food and fuel availability, with urgent fuel needs to support cargo uplift from Kerem Shalom and expand kitchen operations.
- Between April and June, access and resource constraints led to a 76 percent drop in operational kitchens and an 83 percent decline in daily meal distributions. Delivery volumes remain far below needs, prompting efforts to engage communities and address misconceptions.

### Logistics Cluster (LC)

- The Logistics Cluster continues coordinating aid deliveries amid ongoing access restrictions and limited item approvals. Some cargo routes, including from the West Bank, remain blocked. While access via crossings is opened, insecurity continues to hamper safe cargo movements and access to storage sites, though warehouses in the Middle Area and North remain reachable.

### Emergency Telecommunications Cluster (ETC)

- Fuel restrictions continue to threaten telecom services in northern Gaza. The internet has been partially restored in central and northern areas, but the south remains fully disconnected. The ETC continues advocating for fuel and repairs.

THANK YOU TO OUR PARTNERS FOR THEIR CONTINUED SUPPORT