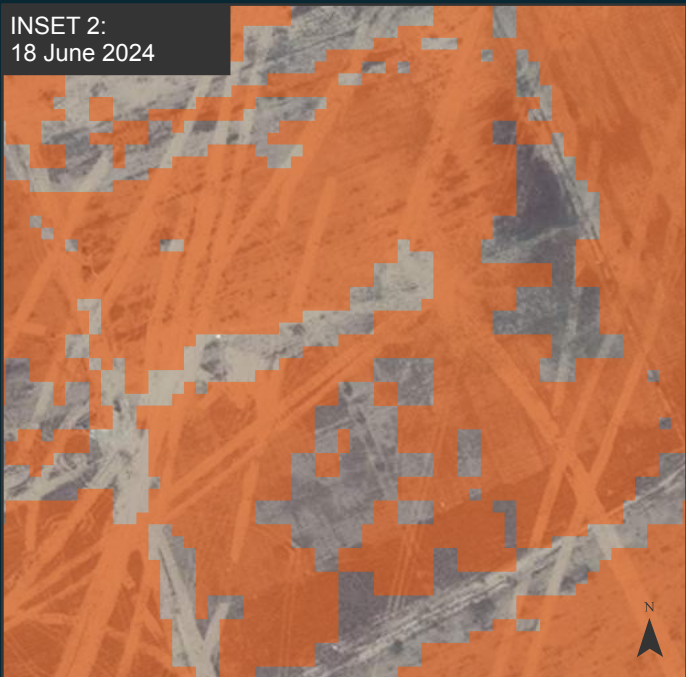
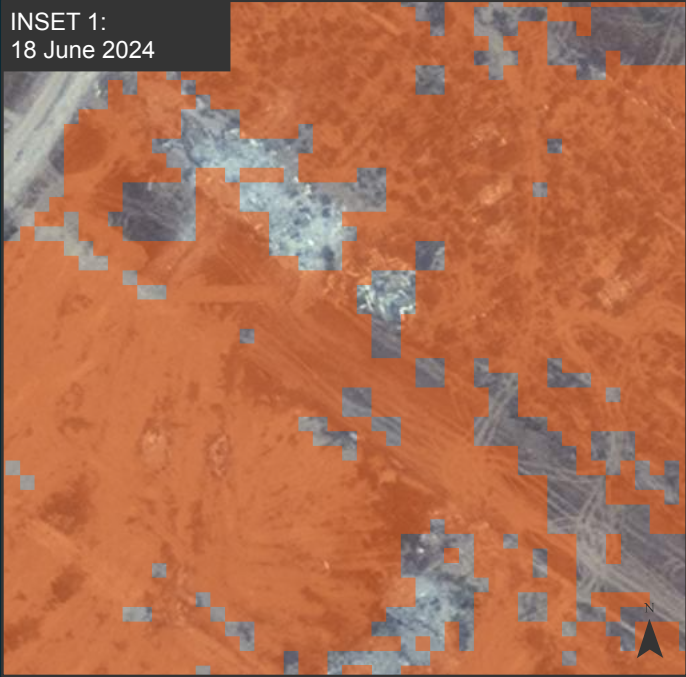


34°30'E

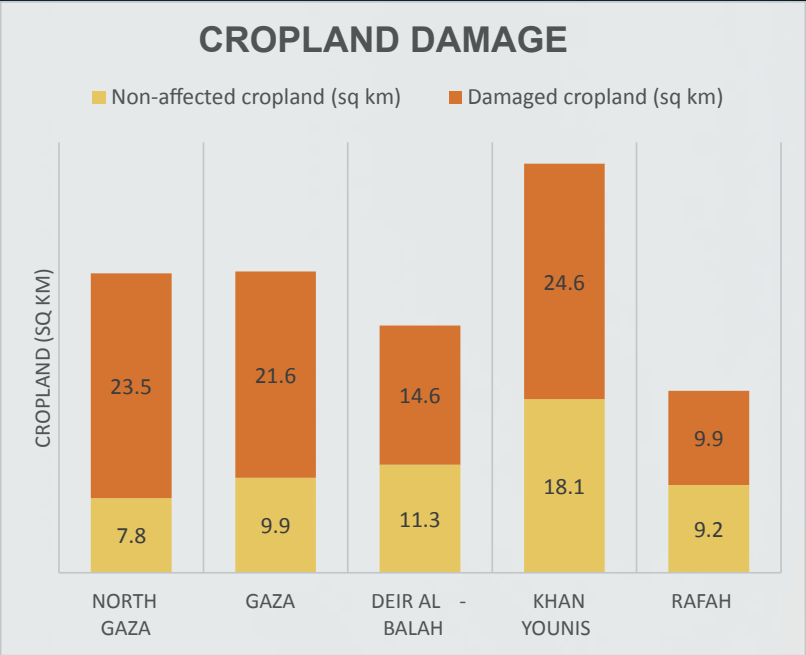
OCCUPIED PALESTINIAN TERRITORY

GAZA STRIP

IMAGERY ANALYSIS: 28 June 2024 / PUBLISHED: 05 July 2024 / V2



Governorate	Non-affected cropland (sq km)		Damaged cropland (sq km)		Total area of cropland (sq km)
North Gaza	7.8	25%	23.5	75%	31.3
Gaza	9.9	31%	21.6	69%	31.5
Deir Al-Balah	11.3	44%	14.6	56%	25.9
Khan Younis	18.1	42%	24.6	58%	42.7
Rafah	9.2	48%	9.9	52%	19.1
Total	56.3		94.2		150.5



Spatial Reference
Name: WGS 1984 UTM Zone 36N
PCS: WGS 1984 UTM Zone 36N
GCS: GCS WGS 1984
Datum: WGS 1984

Satellite Imagery (1): Sentinel-2
Imagery Date: June 2017-2024
Resolution: 10 m
Copyright: Contains modified Copernicus
Sentinel data [2024]
Source: European Space Agency

Satellite Imagery (2): WorldView-02
Imagery Date: 18 June 2024
Resolution: 30 cm
Copyright: © MAXAR 2024
Source: Department of State, Humanitarian
Information Unit

Boundaries: OCHA oPt
Roads: OSM
Analysis: UNOSAT/FAO
Product: UNOSAT



Food and Agriculture
Organization of the
United Nations



COMPLEX
EMERGENCY
CE20231007PSE



UNOSAT Cropland Damage Assessment Overview Map

This map illustrates satellite-detected changes in cropland areas of the Gaza Strip resulting from the decline in the health and density of crops due to the ongoing conflict. UNOSAT conducted an analysis utilising satellite imagery collected by the Sentinel-2 satellite between June 2017 and 2024, performing a Normalized Difference Vegetation Index (NDVI) analysis as well as a multitemporal classification to identify notable changes taking place in cropland areas during that timeframe. The methodology evaluated the damage as a substantial decline in the health and density of crops in June 2024, in comparison to the preceding seven seasons spanning from 2017 to 2024. The decline in the health and density of the crops can be observed due to the impact of activities such as razing, heavy vehicle activity, bombing, shelling, and other conflict-related dynamics. The analysis includes damage assessment for orchards and other trees, field crops and vegetables. UNOSAT analysis shows that the cropland extent in the Gaza Strip is estimated to be 150 sq. km, accounting for approximately 41% of the total area of the Gaza Strip, following an extensive land-cover analysis.

Compared to the average of the previous seven years, approximately 63% of the permanent crop fields in the Gaza Strip exhibited a significant decline in health and density in June 2024. In a comprehensive evaluation, it was found that there has been a 9% increase in the proportion of cropland that has been damaged since the previous analysis conducted in May 2024. Additionally, the analysis indicates a notable rise in the destruction of the orchards and other trees, field crops and vegetables in the Deir Al-Balah Governorate, with a 7-percentage point increase compared to the previous May 2024 analysis. Moreover, there has been a significant escalation in the destruction of cropland within the Gaza Governorate, with the percentage rising from 61% in May 2024 to 69% in June 2024. This is a preliminary analysis and has not yet been validated in the field.

Legend

- Damaged cropland
- Non-affected cropland
- Populated place
- Primary road
- Secondary road
- Armistice Demarcation Line
- Governorate boundary
- International boundary

The boundaries and names shown and the designations used on this map do not imply official endorsement or acceptance by the United Nations.

Map scale for A3: 1:125,000
0 0.75 1.5 3 KM