

### occupied Palestinian territory

**Emergency Type:** Complex

**Reporting Period:** 1 October – 31 December 2022

#### Health Cluster people in need and target

**1.5 M** Need Assistance

**1.2 M** Targeted

**42** Active Cluster Members



Local surgeon working with MAP's LR visiting volunteer at EGH theatre, Southern Area, 2022 - Photo: MAP

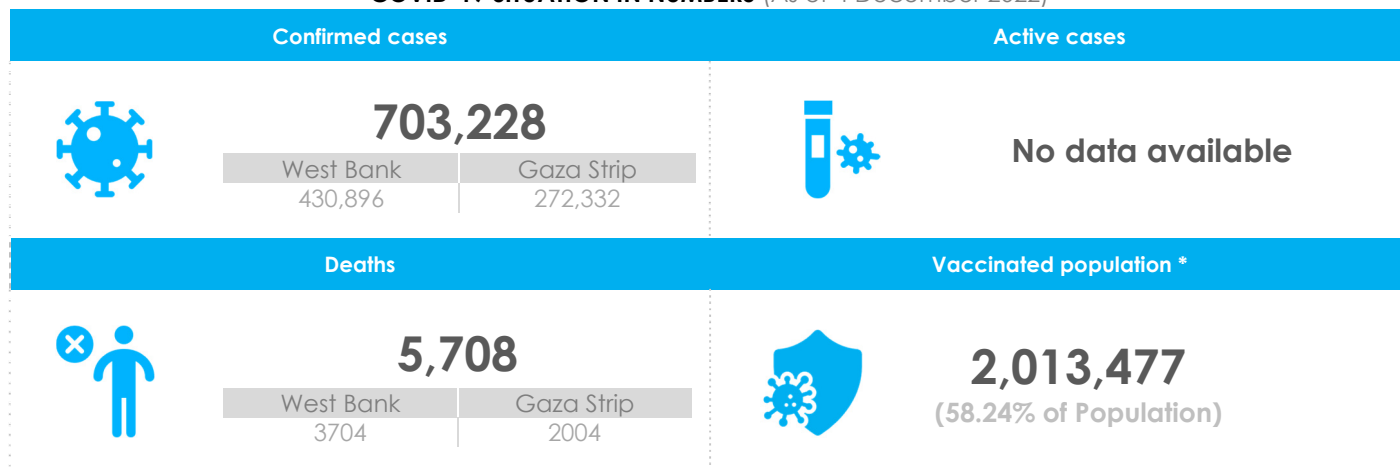
### HIGHLIGHTS

- In the fourth quarter, partners supported the capacity building of 1,846 health workers on various health issues.
- Close to 39,000 people in Area C benefitted from mobile clinic services.
- About 11,500 patients benefitted from limb reconstruction, elective surgery, and rehabilitation services.
- Around 65,000 people benefitted from mental health psychosocial support (MHPSS) services.
- Partners provided medical supplies enough to cover close to 82,000 people with various medical needs.
- Close to 117,000 patients suffering from chronic diseases received treatment and consultations.
- About 200,000 children benefitted from health and nutritional services.
- Around 1,600 women and girls accessed SGBV services.
- COVID-19 vaccination apathy has seen stagnation in number of people vaccinated.
- The Health Cluster finalized the 2023 humanitarian health needs and response activities.

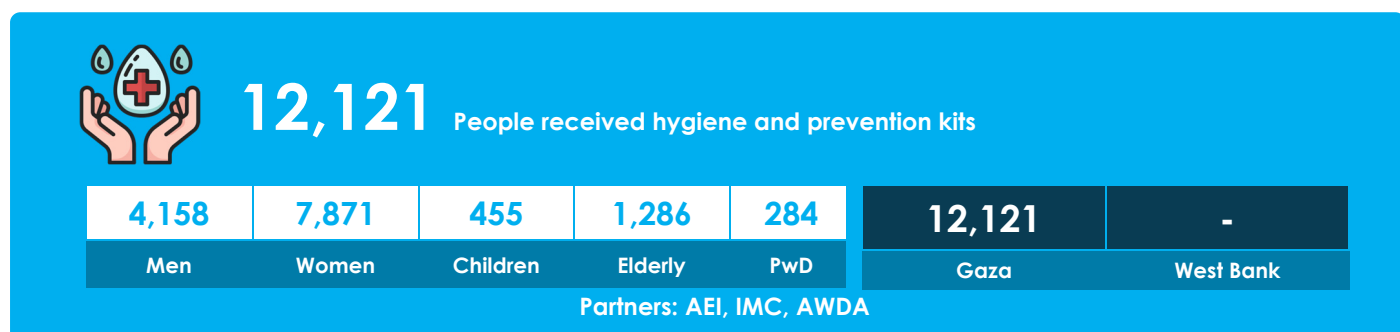
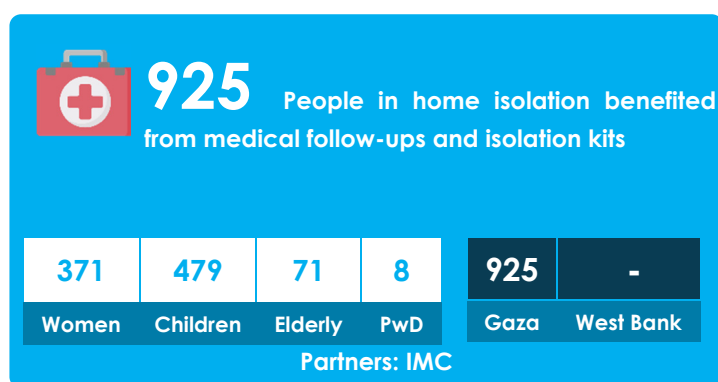


## Communicable Diseases

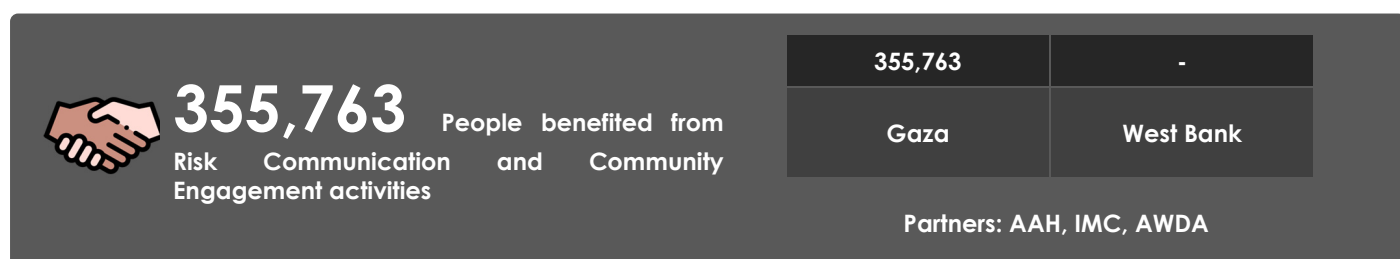
COVID-19 SITUATION IN NUMBERS (As of 4 December 2022)



\*The number of tests does not include East Jerusalem



## Risk Communication and Community Engagement





## Trauma and Emergency Care



**474** Patients supported with limb reconstruction

270	88	116	18	9	474	-
Men	Women	Children	Elderly	PwD	Gaza	West Bank

Partners: AAH, MAP UK, PHR, UNRWA, QRCS, WHO



**5,728** Patients supported with elective surgery

1,735	3,487	506	90	-	5,728	-
Men	Women	Children	Elderly	PwD	Gaza	West Bank

Partners: QRCS, PHR, MAP UK, AAH, UNRWA, Al Quds Hospital, AWDA



**43,541** People benefited from medical supplies provided

38,080	5,461
Gaza	West Bank

Partners: MAP UK, MDM- France, PHR, IMC, AEI, WHO



**510** Health care staff trained on essential life-saving interventions

443	67
Gaza	West Bank

Partners: MDM- France, MAP UK, PHR, WHO



Masafer Yatta -Al halawah- The GP Dr. doing dressing for the diabetic patient leg - Photo: CARE





## Non-communicable Diseases



**116,529**

Patients suffering from chronic diseases received treatment and consultations

Patients suffering from chronic diseases received treatment and consultations

68,016	1,566	47,646	9,383	115,126	1,403
Women	Children	Elderly	PwD	Gaza	West Bank

Partners: AEI, AAH, Al-Quds Hospital, MSF, PHR, MAP, UNRWA, IMC, Holy Family Hospital, AWDA



**10,075**

People benefited  
medical supplies provided

People benefited

**10,075**

Gaza

-

West Bank

Partners: WHO, MAP UK, MdM France, IMC



**253**

Health care workers  
trained on NCD management

Health care workers

**253**

Gaza

-

West Bank

Partners: MAP UK, IMC, WHO



IMC Distributes IPC Materials to Implementing Partner - Photo: IMC



## Mobile Clinics



**38,597**

People received treatment and consultations through mobile clinics

8,878	17,942	11,777	8,565
Men	Women	Children	Gaza
2,783	932	30,032	
Elderly	PwD	West Bank	

Partners: MAP, AAH, UNFPA, CARE, IMC, MSF, PHR, Holy Family Hospital



## Mother and Child Health and Nutrition



**200,449**

Children under age 5 received quality health and nutritional services

102,968	97,481
Boys	Girls
200,449	--
Gaza	West Bank

Partners: AEI, AWDA, NECCCRW UNRWA



## Sexual and Reproductive Health & Gender-Based Violence



**1,656**

Women and girls accessed sexual and gender-based violence (SGBV) life-saving services

1,233	423	2
Women	Girls	PwD

Partners: AWDA, IMC, UNRWA



**146**

Health care workers trained on neonatal interventions, SRH and malnutrition management

146	-
Gaza	West Bank

Partners: AEI, MAP, NECCCRW, UNFPA, IMC



**6,260**

Women and girls referred to shelters, mental health, and psychosocial support services (MHPSS) and/or legal services

4,836	1,424	2
Women	Girls	PwD

Partners: MdM France, AWDA, IMC, UNRWA



**27,930**

People benefited from SRH medical supplies provided

13,301	14,629
Gaza	West Bank

Partners: IMC, NECCCRW, MAP



## Mental Health and Psychosocial Support



**662** Health care providers and community workers trained on MHPSS, including mhGAP

<b>662</b>	-
Gaza	West Bank

Partners: AWDA, IMC, MdM France, PHR, UNRWA, WHO



**64,920** People received mental health and psychosocial support services

<b>11,779</b>	<b>47,862</b>	<b>5,279</b>
Men	Women	Children
<b>864</b>	<b>960</b>	
Elderly	PwD	
<b>61,848</b>	<b>3,072</b>	
Gaza	West Bank	

Partners: AWDA, MdM France, UNRWA, MSF, IMC, MAP, PUI



IMC-GBV Recreational Activity – Photo: IMC



## Disability and Rehabilitation



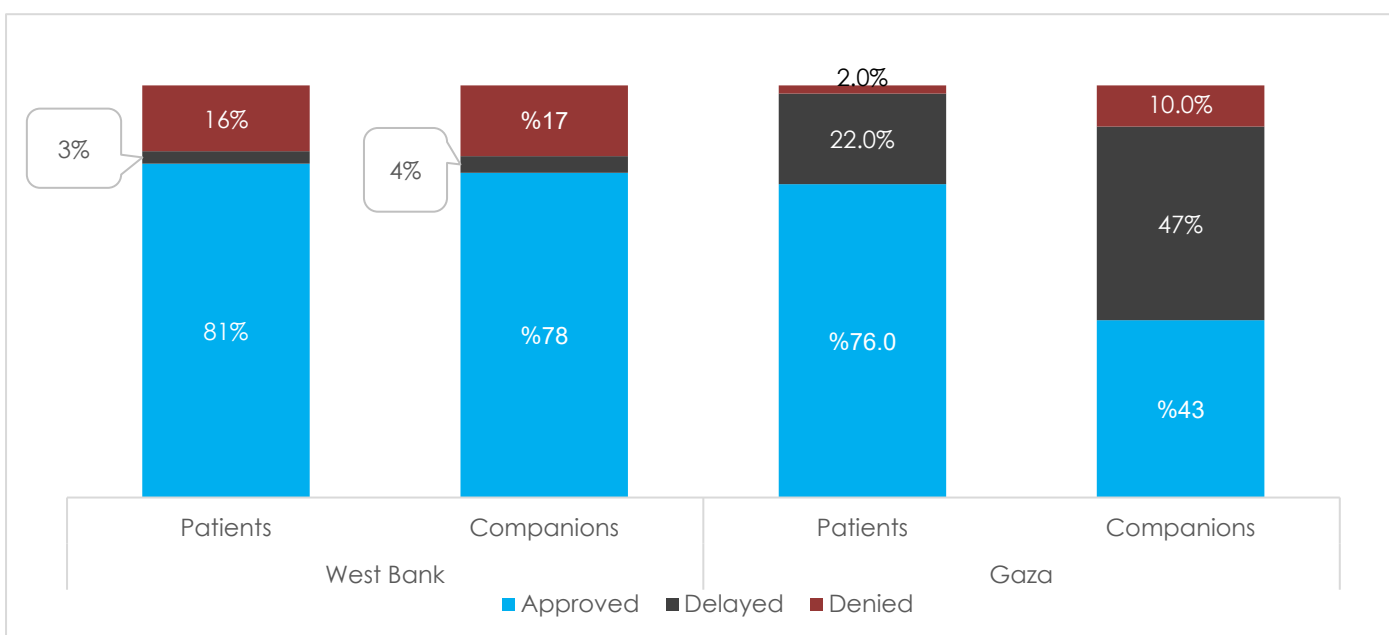
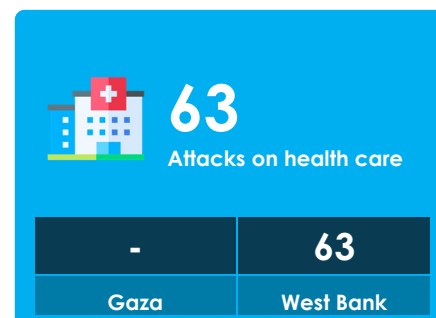
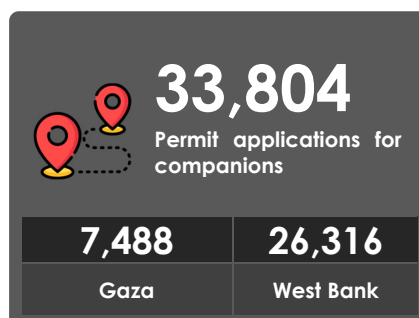
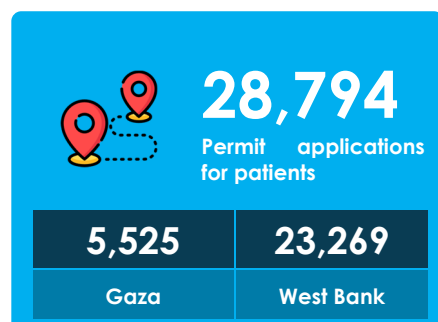
**5,155** Patients provided with multi-disciplinary rehabilitation services

<b>1,961</b>	<b>2,366</b>	<b>828</b>	<b>644</b>	<b>10</b>	<b>5,155</b>	-
Men	Women	Children	Elderly	PwD	Gaza	West Bank

Partners: AAH, MAP, IMC, QRCS, UNRWA, WHO



## Health access and attacks on healthcare



In the last quarter of 2022, there were 63 health attacks recorded and verified across oPt in [WHO's Surveillance System for Attacks on Health Care \(SSA\)](#).

### All recorded health attacks were in the West Bank:

- 21 incidents in East Jerusalem
- 42 incidents in the rest of the West Bank

**39** incidents involved obstruction to the delivery of health care, including obstruction to **40** ambulances, the militarized search of **18** ambulances, detention of **2** ambulances, and the arrest and/or detention of **15** health workers.

**32** incidents involved physical violence, including damage to **21** ambulances, injury of **16** health workers, the military incursion of a health facility, and attack with damage to equipment of a second health facility.

Read more in WHO's monthly Health Access reports:  
<http://www.emro.who.int/pse/publications-who/monthly-referral-reports.html>



This bulletin was made with contributions from the following partners:

