

### occupied Palestinian territory

**Emergency Type:** Complex  
**Reporting Period:** 1 July – 30 September 2022

#### Health Cluster people in need and target

<b>1.5 M</b>	Need Assistance
<b>1.2 M</b>	Targeted
<b>42</b>	Active Cluster Members



Opening ceremony of the Health Cluster exhibition 2022 in West Bank - Photo: WHO

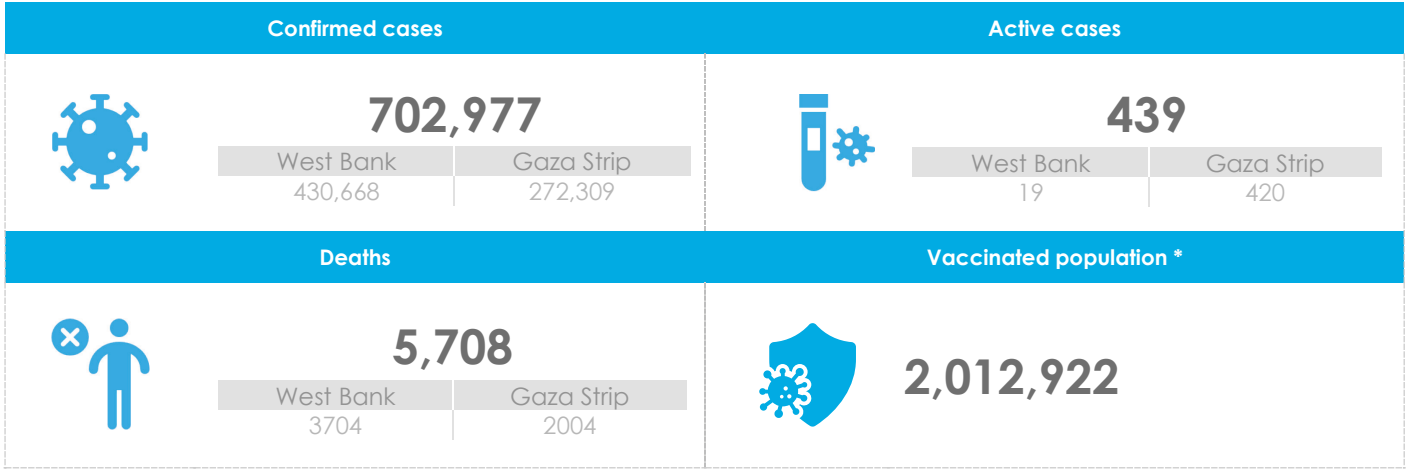
### HIGHLIGHTS

- In the third quarter there were a total of 1,580 people treated for conflict-related injuries in the West Bank, including East Jerusalem.
- Partners supported the capacity building of 2,270 health workers on various health issues.
- Close to 19,000 people in Area C benefitted from mobile clinic services.
- A total of 22,250 patients benefitted from limb reconstruction, elective surgery, and rehabilitation services.
- Around 170,000 people benefitted from mental health psychosocial support (MHPSS) services.
- Medical supplies enough to cover 192,250 people with various medical needs were provided by partners.
- Close to 60,000 patients suffering from chronic diseases received treatment and consultations.
- The Health Cluster hosted its first partners exhibition in Gaza and Ramallah showcasing partner activities an event attended by around 500 people
- During the reporting period, 150 participants from Health Cluster partners met to discuss the 2023 humanitarian health needs and response activities.

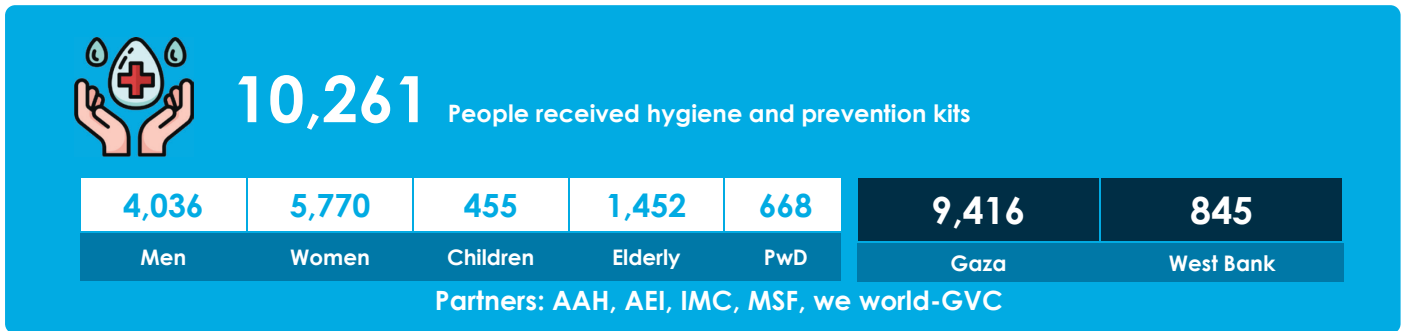
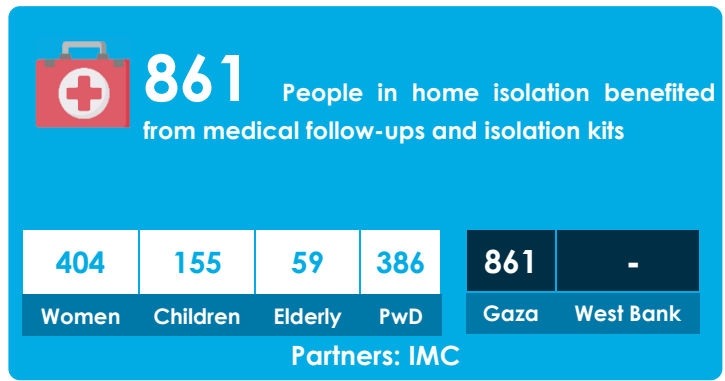
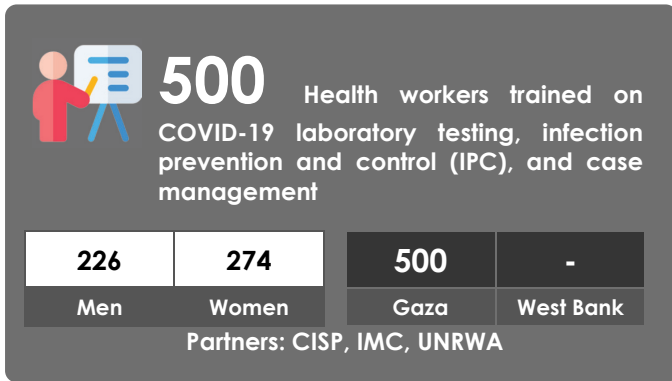


# Communicable Diseases

COVID-19 SITUATION IN NUMBERS (As of 2 October 2022)



\*The number of tests does not include East Jerusalem



## Risk Communication and Community Engagement





## Trauma and Emergency Care



**425** Patients supported with limb reconstruction

<b>299</b>	<b>42</b>	<b>84</b>	<b>-</b>	<b>9</b>	<b>425</b>	<b>-</b>
Men	Women	Children	Elderly	PwD	Gaza	West Bank

Partners: MAP UK, PHR, PUI, QRCS, WHO



**8,274** Patients supported with elective surgery

<b>3,057</b>	<b>4,582</b>	<b>635</b>	<b>95</b>	<b>-</b>	<b>7,646</b>	<b>628</b>
Men	Women	Children	Elderly	PwD	Gaza	West Bank

Partners: QRCS, PHR, MAP UK, AAH, UNRWA, Al Quds Hospital



**167,114** People benefited from medical supplies provided

<b>161,335</b>	<b>5,779</b>
Gaza	West Bank

Partners: HI, MAP UK, MedGlobal, PHR, IGATHA48, WHO



**384** Health care staff trained on essential life-saving interventions

<b>263</b>	<b>121</b>
Gaza	West Bank

Partners: HI, MAP UK, MedGlobal, PHR, WHO



Mass Casualty Management Training conducted by WHO in West Bank and Gaza - Photo: WHO



## Non-communicable Diseases



**60,383**  
consultations

Patients suffering from chronic diseases received treatment and

<b>36,949</b>	<b>425</b>	<b>8,440</b>	<b>9,383</b>	<b>14,379</b>	<b>45,402</b>
Women	Children	Elderly	PwD	Gaza	West Bank

Partners: AEI, AAH, Al-Quds Hospital, IRW, PHR, UNFPA, UNRWA



**10,134** People benefited  
medical supplies provided

<b>10,134</b>	<b>-</b>
Gaza	West Bank

Partners: WHO, MAP UK, Mdm France



**421** Health care workers  
trained on NCD management

<b>116</b>	<b>305</b>
Gaza	West Bank

Partners: MAP UK, UNRWA, WHO



Follow up session with a case in a mobile clinic – Photo: Gaza Community Mental Health Programme



## Mobile Clinics



**18,923**

People received treatment and consultations through mobile clinics

<b>3,618</b>	<b>8,839</b>	<b>6,466</b>	<b>2,071</b>	
Men	Women	Children	Gaza	
<b>2,481</b>		<b>636</b>	<b>16,852</b>	
Elderly		PwD	West Bank	

Partners: MAP, AAH, UNFPA, CARE, IMC, MSF, PHR, Holy Family Hospital



## Mother and Child Health and Nutrition



**227,256**

Children under age 5 received quality health and nutritional services

<b>116,534</b>	<b>110,722</b>
Boys	Girls
<b>198,979</b>	
Gaza	West Bank

Partners: AEI, UNRWA



## Sexual and Reproductive Health & Gender-Based Violence



**850**

Women and girls accessed sexual and gender-based violence (SGBV) life-saving services

<b>834</b>	<b>16</b>	<b>-</b>	<b>850</b>	<b>-</b>
Women	Girls	PwD	Gaza	West Bank

Partners: Mdm France, UNRWA



**119**

Health care workers trained on neonatal interventions, SRH and malnutrition management

<b>119</b>	<b>-</b>
Gaza	West Bank

Partners: AEI, MAP UK



**546**

Women and girls referred to shelters, mental health, and psychosocial support services (MHPSS) and/or legal services

<b>487</b>	<b>59</b>	<b>-</b>	<b>446</b>	<b>100</b>
Women	Girls	PwD	Gaza	West Bank

Partners: Mdm France, Mdm Spain, UNRWA



**6,558**

People benefited from SRH medical supplies provided

<b>-</b>	<b>6,558</b>
Gaza	West Bank

Partners: UNFPA



## Mental Health and Psychosocial Support



**842** Health care providers and community workers trained on MHPSS, including mhGAP

<b>797</b>	<b>45</b>
Gaza	West Bank

Partners: Mdm France, Mdm Spain, UNRWA, PHR, GCMHP, MAP UK, WHO



**169,736**

People received mental health and psychosocial support services

<b>59,175</b>	<b>99,830</b>	<b>10,104</b>
Men	Women	Children

<b>46,738</b>	<b>626</b>
Elderly	PwD

<b>138,969</b>	<b>30,767</b>
Gaza	West Bank

Partners: Mdm France, UNRWA, Mdm Suisse, Mdm Spain, MSF, UNFPA, PUI, GCMHP, RED NOSES



Clowns visit to patients in the Pediatric department in the Palestine Medical Complex in Ramallah. Photo: RED NOSES International



## Disability and Rehabilitation

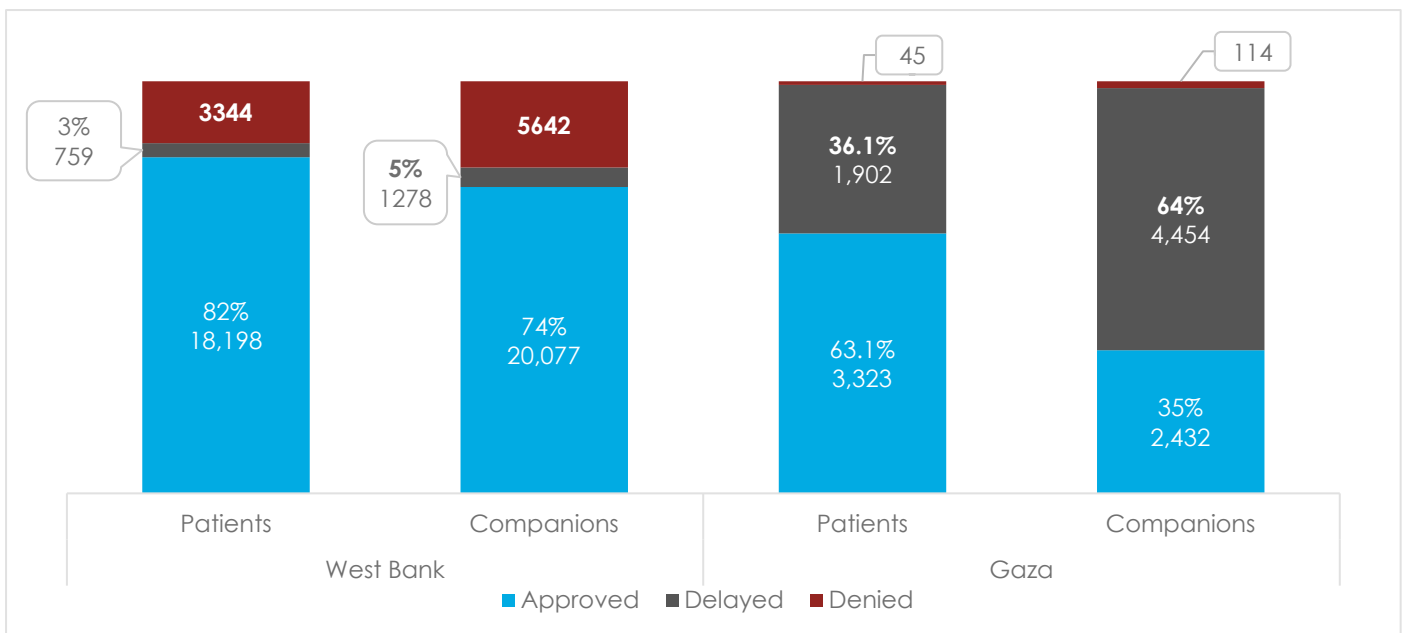
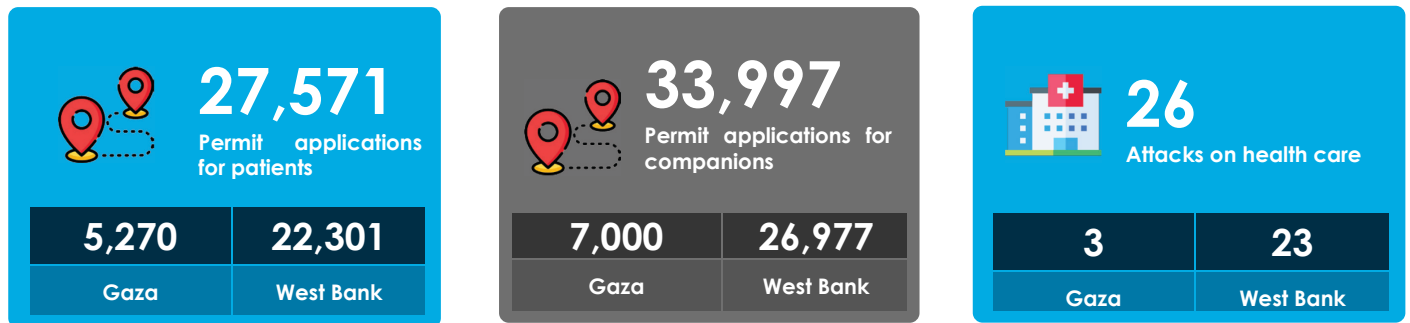


**6,623** Patients provided with multi-disciplinary rehabilitation services

<b>2,568</b>	<b>3,214</b>	<b>841</b>	<b>1,208</b>	<b>70</b>	<b>6,623</b>	<b>-</b>
Men	Women	Children	Elderly	PwD	Gaza	West Bank

Partners: AAH, MAP UK, HI, UNRWA, WHO

# Health access and attacks on healthcare



In the third quarter of 2022, there were 26 health attacks recorded and verified across oPt in [WHO's Surveillance System for Attacks on Health Care \(SSA\)](#).

### Gaza Strip

**3 attacks** were recorded in the context of the August escalation:

- Complete closure of the Gaza Strip prevented access to essential care for 289 patients
- 1 health facility damaged
- 1 ambulance damaged

### West Bank (including East Jerusalem)

**23 attacks** were recorded:

- 10 incidents involved ambulance prevention
- 7 incidents involved attack against ambulance
- 14 ambulances were affected
- 15 health workers injured
- 1 patient arrested

Read more in WHO's monthly Health Access reports:  
<http://www.emro.who.int/pse/publications-who/monthly-referral-reports.html>

### Key priorities for the fourth quarter

Health projects in the 2022 Humanitarian Response Plan are only at 45% funded. Below are some key needs:

- Continue scaling up trauma and emergency response focusing on prepositioning and capacity building in West Bank including East Jerusalem.
- Continue advocating at various levels to address:
  - Severe restrictions on movement affecting delivery of and access to essential health care
  - Coercive environment affecting determinants of health
  - Excessive use of force contributing to attacks on health care

## Assessments

### **Assessment of medical and mental health services in Hebron and Gaza, MSF (Ongoing)**

#### **Assessment of the emergency preparedness of Level 4 PHCs in Gaza, MdM-France (Completed)**

Assess the readiness of the emergency department in the Level 4 PHCs to receive emergency cases and manage services during emergency periods.

#### **The effect of humor on Health Care - A field study in Palestine, RED NOSES International (Ongoing)**

This study is being implemented in the hospitals we work in, in cooperation with RED NOSES International, Vienna University of Economics and Business. The study is expected to generate important insights in the potential of complementary medical interventions for the psychosocial well-being and mental as well as physical health of vulnerable populations, with a particular focus on children. Additionally, it intends to assess the importance of trust in the health care context to achieve desirable health outcomes. It shall serve as a blueprint for future monitoring and evaluation activities of Red Noses International, which can be expanded to other activities of the organization worldwide.

#### **For children: Strength and Difficulties Questionnaire (SDQ) For Adults: International Classification of Functioning & Disabilities (ICF) Assessment, GCMHP (Completed)**

To assess the changes at wellbeing among the children and adults who received therapeutic interventions at the GCMHP community centers, GCMHP applied the SDQ and ICF assessment scales.

#### **Trauma and Emergency Care Rapid Assessment Report Post-Conflict Escalation Gaza, WHO (Completed)**

The assessment aims to identify best practices that enhanced the health system response during the last Gaza escalation, as well as weaknesses that must be addressed, to improve preparedness and response capacity for any future similar incident.

#### **Major Gaza hospitals responsiveness during the last escalation post MCM training, WHO (Completed)**

To assess the response of the major hospitals which received MCM training during the recent escalation of hostilities.

#### **IPC Baseline assessment in 4 health care facilities in North Gaza, CISP (Completed)**

Assessment was designed and performed jointly by CISP and Juzoor for Health and Social Development, based on the most recent IPC Guidelines and the Infection Prevention and Control Assessment Framework (IPCAF) scoring system. It aimed at updating and detailing identification of capacities, gaps and needs in multiple areas concerning IPC in four target health facilities (Indonesian Hospital - including inpatient, emergency department and operation theatres; and the PHC clinics Suhadaa Jabalia, Al-Shimaa and Al-Atatra)



This bulletin was made with contributions from the following partners:



Ms. Chipo Takawira  
Health Cluster Coordinator  
ctakawira@who.int

Dr. Abdelnaser Soboh  
Gaza Sub-National Health Cluster  
soboha@who.int