



As part of the shelter rehabilitation project, CRS rehabilitated this housing unit for female-headed household in Khan Younis Governorate. The result was a more dignified living space that protected the family from the elements and the harsh weather.

KEY FIGURES

West Bank/East Jerusalem

➤ Demolition response

Demolished structures: 292 (Jan-March 2021) Of which **115 (40%)** are residential, displaced **455** individuals, including **246** children

Donor-funded structures: 109 of which **61** are residential

67 households have received demolition shelter response in 2021.

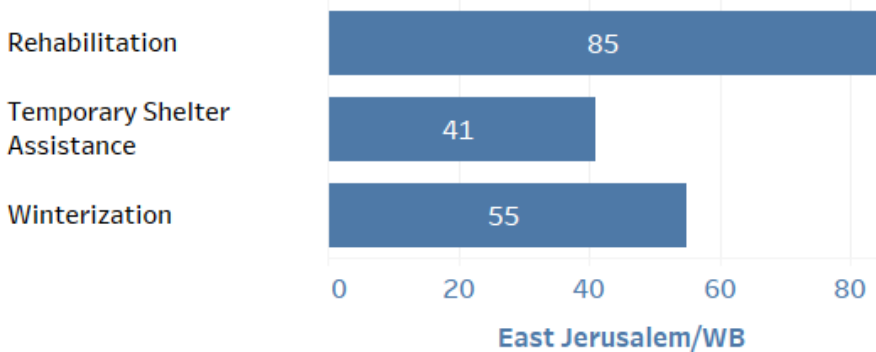
➤ Shelter Needs for upgrading and rehabilitation of substandard units :

Around **4,400** substandard housing units were identified as of HNO 2021 in urgent need for rehabilitation and adaptation to ensure adequate protection and reduced risk of displacement.

➤ Shelter Responses

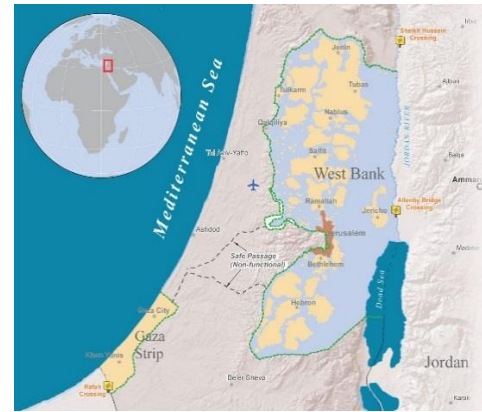
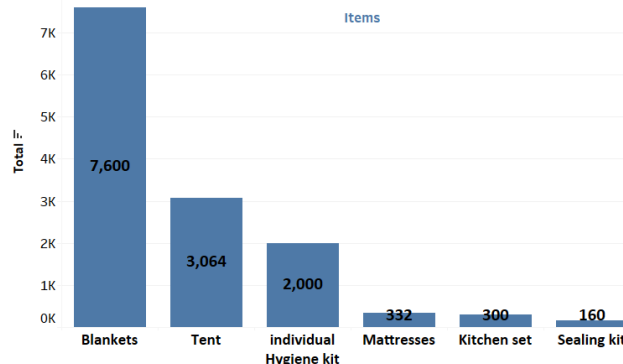
The following chart clarifies the No. of Households assisted during the first quarter in 2021

Intervention/Response



➤ WB/East Jerusalem Stockpile update

Existing stockpile of NFIs at Shelter agencies in the WB is adequate on the average to support around **1,000** families with essential non-food items



CLUSTER TEAM

National Shelter Cluster Coordinator
Fadi Shamisti (NRC)
coord1.palestine@sheltercluster.org
+972-54-666-3902 / +972-59-794-9020

Shelter Cluster Coordinator, Gaza
Iyad Abu Hamam (NRC)
coord.gaza@sheltercluster.org
+972-59-707-7233

Information Management Senior Officer, Gaza
Mohammed Elaklouk (NRC)
im1.palestine@sheltercluster.org
+972-59-591-1995

KEY DOCUMENTS

- [Shelter Cluster Strategy Palestine 2021](#)
- [Shelter Cluster COVID-19 Dashboard 2020- Palestine](#)
- [Minimum standards for repairs and upgrade Technical guidance - GAZA](#)
- [Shelter Cluster Coordination Performance Monitoring 2020](#)

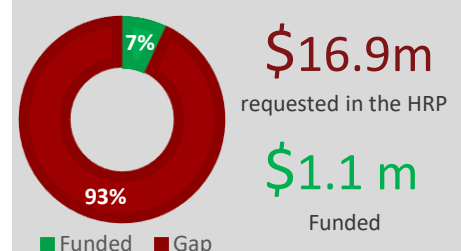
KEY LINKS

- [Global Shelter Cluster](#)

HRP 2021 KEY FIGURES

25 Cluster Partners **99K/0.4m** Targeted/people in need

FUNDING

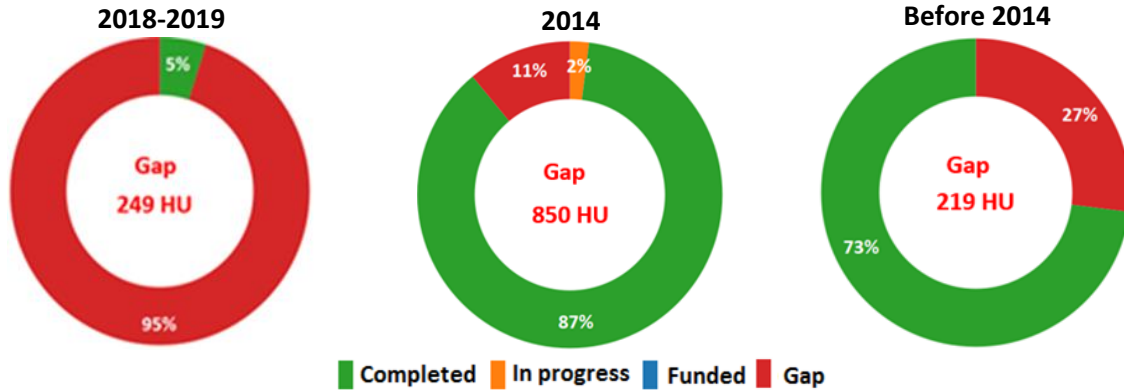


Gaza

➤ IDP response

Over **660 families (3700 individuals)** remain internally displaced (IDP) due to the 2014 conflict including recurrent escalations since Nov 2018. An **urgent need for assistance** exists for **73** IDP families requiring shelter support.

➤ Reconstruction (Remaining Cases of Conflicts)



➤ Winter related response

Shelter Cluster monitored the weather extremes situation with particular focus on localities of substandard shelters with metal/asbestos roofs and vulnerable houses lacking water proofing. The responses was summarized as in Table 1.

Organization	ACTED	MAAN	NRC	PRCS
# of HH Assisted	20 HH	19 HH	232 HH	155 HH
Type of intervention	NFIs	NFIs	Cash voucher	NFIs

➤ Shelter Needs for Upgrading and Rehabilitation of substandard units:

Around **21,500** substandard units are in need for rehabilitation of essential components to maintain minimum requirements of waterproofing, hygienic living space, privacy, and protection from weather extremes. Overcrowding compounded with unhygienic living conditions is common in the substandard shelters in Gaza.

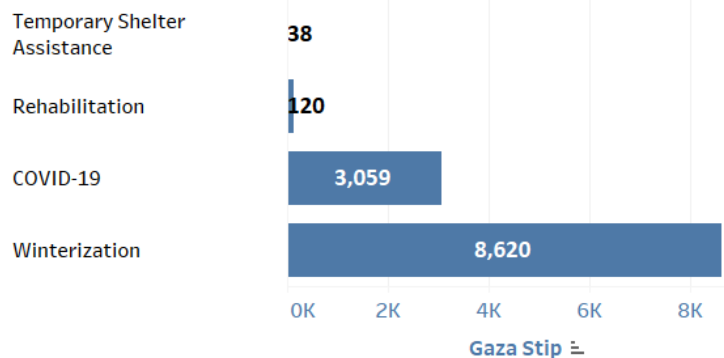
➤ Shelter Responses

In the 1st quarter 2021, Emergency assistance was provided to families during and immediately after emergency to ensure access to basic services and minimum adequate shelter.

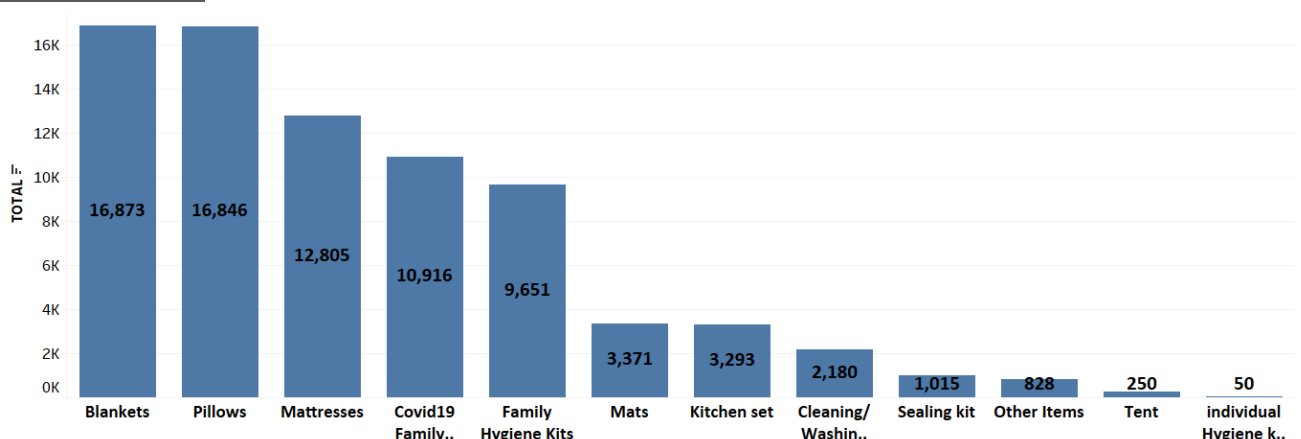
The different types of emergency assistance provided included:

- Covid-19 emergency response for 3053 families
- Winter related assistance with NFIs including (bedding sets, mattresses, kitchen sets, hygiene kits, sealing off materials, etc.) to 8620 families
- Temporary Cash assistance to 38 evicted families
- Winter rehabilitation of substandard shelters for 120 families.

Intervention/Response



➤ Gaza Stockpile update



Existing NFI stockpile at different organizations in Gaza is sufficient to support around **10,000** Families only.

Further details and previous months Factsheets can be found at www.sheltercluster.org/response/palestine