






Syria: UNRWA - Progress Highlights January-June 2019



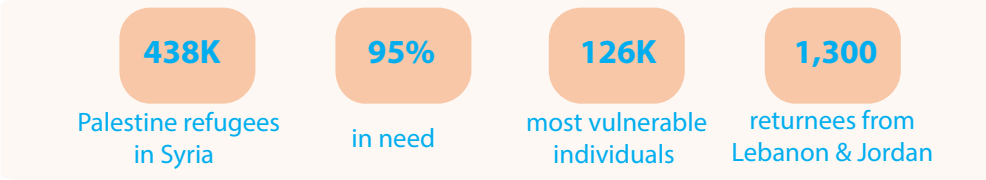
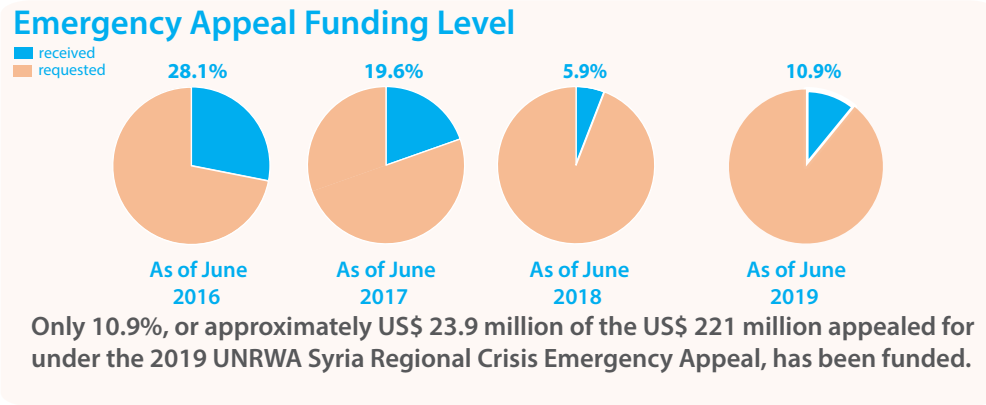
103 schools operated by UNRWA
48,883 students enrolled as of May 2019 (grades 1 to 9)



85.03 % success rate of UNRWA ninth-graders compared to 67.3 % average national success rate for the academic year 2018-2019



17 health centres, 5 health points and 2 mobile clinics
411,682 health consultations (primary, secondary and tertiary health care)
43,034 dental consultations



Returnees


With the reduction in large-scale fighting in significant parts of the country in 2018, the likelihood of the return of Palestine refugees from Syria (PRS) has increased. Indeed, while the number remains quite low, spontaneous PRS returns to Syria are on the rise. UNRWA recorded three fold increase in returns from Lebanon and Jordan during the first half of 2019 compared to the first first half of 2018. Albeit, the numbers remain small with a total of 1,300 returnees as of 30 June 2019. UNRWA does not have a mandate for durable solutions and is not involved in any initiatives directly facilitating return, however, the Agency respects the wishes of those who make free and informed decisions to voluntarily return on their own, and seeks to provide them with services (based on need) upon return to their place of habitual residence in Syria.

UNRWA in Action




UNRWA emergency cash assistance remains critical in helping vulnerable Palestine refugees in Syria. ©2019 UNRWA photo


Ranya al Musa, 34, has three daughters aged between six and twelve years-old. She has raised them on her own since her husband went missing in 2012. Ranya's family is one of thousands of female-headed households in Syria. Since the start of the conflict, 120,000 Palestine refugees have fled the country, many of them men. In addition, hundreds of Palestine refugees have disappeared or died. Ranya and her family receive UNRWA cash assistance, which she says "has been and continues to be of great support to her and her daughters".



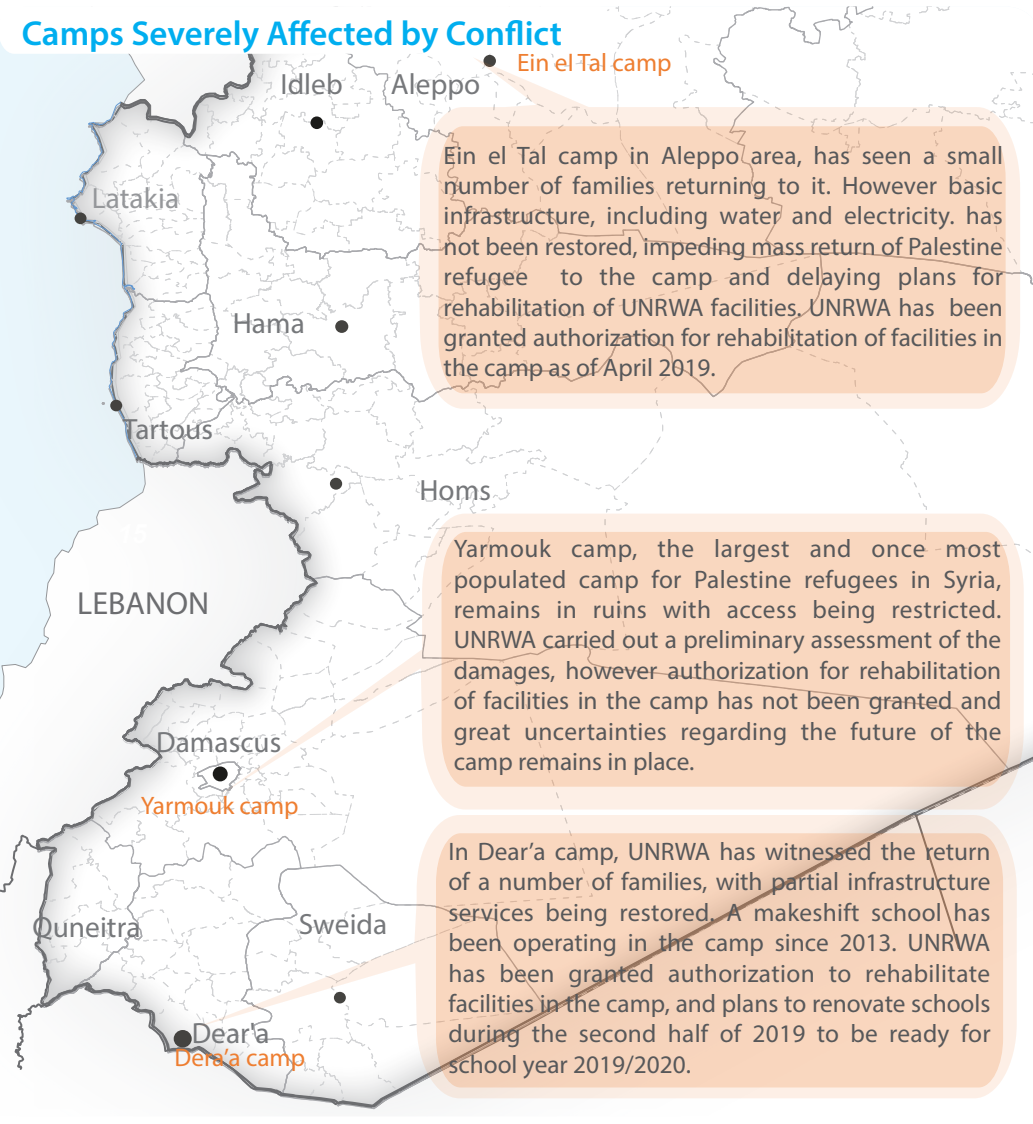
17,228 Palestine refugees received NFIs based on need
13,346 Palestine refugees received hygiene kits



6 Family Support Offices provided protection assistance
1,381 Palestine refugees benefited from legal assistance
41,210 students received psycho-social support



3 humanitarian missions conducted to Yalda in January and March benefiting 8,000 individuals, displaced mainly from Yarmouk



UNRWA Introduces Targeted Approach to Humanitarian Assistance

1st round 2019

407,701
US\$ 23 per person

2nd round 2019

Two-tier system
US\$ 14 and US\$ 9 per person

2019 Jan Feb Mar April May June

In the first half of 2019, UNRWA continued to provide cash and food assistance to Palestine refugees to help them meet their basic needs. UNRWA launched a targeted approach for the distribution of food assistance and cash assistance adopting a two-tier system. The targeted approach was developed based on a vulnerability assessment which found that those with an increased likelihood of being vulnerable are: female-headed households, families headed by a disabled person and persons with disabilities, families headed by an elderly person, and unaccompanied minors (orphans). Two rounds of cash assistance were launched in the first half of the year, with the second using the targeted approach. Under its 2019 Emergency Appeal, UNRWA had planned to provide the most vulnerable categories (about 126,000 individuals) with US\$ 28 per month per person and the rest of the caseload of eligible Palestine refugees (about 292,000 individuals) with US\$ 14 per month per person however, these amounts were reduced to US\$ 14 and US\$ 9 respectively, due to limited funding. During the second round of cash assistance, UNRWA also launched a pilot for the use of ATM cards as means of cash distribution. 10,000 ATM cards were issued, distributed and credited to the selected beneficiaries throughout Syria governorates. One round of food distribution was launched in the first half of 2019, targeting exclusively the most vulnerable categories of Palestine refugees in addition to certain cases based on acute need such as persons experiencing movement restrictions in Yalda. It is estimated that 135,000 individuals will be reached with food assistance.

The boundaries and names shown and the designations used on this map do not imply official endorsement or acceptance by the United Nations.