

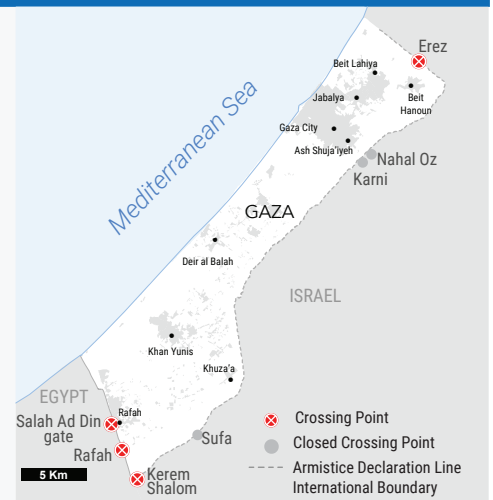
# GAZA CROSSINGS' OPERATIONS STATUS: MONTHLY UPDATE - AUGUST 2019



## BACKGROUND

Longstanding restrictions on the movement of people and goods to and from the Gaza Strip have undermined the living conditions of about two million Palestinians. Many of the restrictions, originally imposed by Israel in the early 1990s, were intensified after June 2007, following the Hamas takeover of Gaza, the imposition of a blockade and the closure of the Rafah Crossing with Egypt. These restrictions limit access to livelihoods, essential basic services and housing, disrupt family life, and undermine people's hopes for a secure and prosperous future. In recent months, OCHA has witnessed some easing of restrictions such as opening Kerem Shalom crossing on Friday for the entry of Qatari-funded fuel for the Gaza Power Plant (GPP) and an increase in the number of permits issued to business people.

Interactive versions of the following charts are available at [www.ochaopt.org/gaza-crossings/](http://www.ochaopt.org/gaza-crossings/)



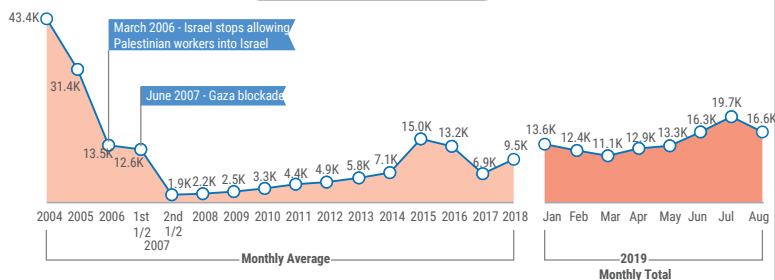
## MOVEMENT AND ACCESS OF PEOPLE\*

### EREZ CROSSING

- Opened on 26 days during daytime: from Sunday to Thursday, for the passage of permit holders of all permitted groups (primarily business people, patients and companions, foreign nationals and aid workers); and, on Fridays, for urgent cases and foreign nationals.
- The number of exits in August (16,601) was 17 per cent above the monthly average between January and July 2019 (14,187).
- In August 2019, Israel approved 1,461 permits for Gaza residents, in addition, 1,310 permits were approved for business people.
- The number of exits by patients and their companions (2,883) decreased by 6 per cent, compared to the monthly average between January and July 2019 (3,059).
- Israel approved 67 per cent of the 1,734 applications submitted for patient exit permits; the rest were either rejected or no answer was received by the time of the medical appointments (WHO).
- The number of exits by business people, which constitute the largest category, increased by 23 per cent, compared to the monthly average between January and July (10,915 vs 8,858). Some of the people included in this category are believed to be laborers.

The total number of business people with valid permits has increased from 1,975 in December 2018 to more than 3,592 in August 2019, but is still below the agreed quota between the PA and Israel of 5,000 (PA General Authority for Civil Affairs).

Crossings into Israel

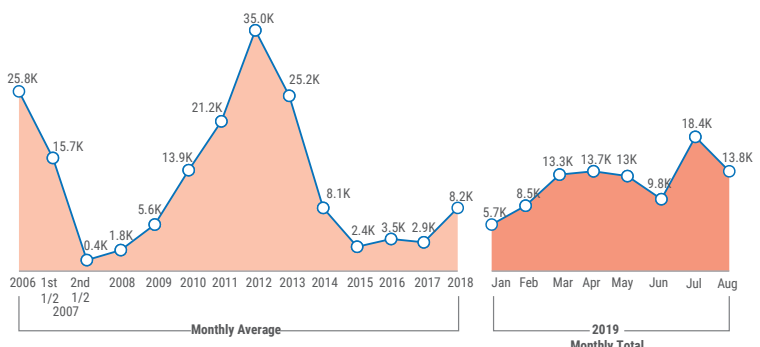


\* The figures reflect number of times people crossed, but not the actual number of people crossing.

### RAFAH CROSSING

- Opened in both directions during daytime on 10\* days, and in one direction on five days for the entry of pilgrims.. The crossing was closed for five days due to Eid Al Adha Muslims holiday.
- A total of 13,769 crossings (8,976 entries into Gaza and 4,793 exits) were recorded in August, 17 per cent above the monthly average between January and July 2019 (11,777); pilgrims accounted for 21 per cent of the crossings.
- Since the beginning of 2019, Rafah Crossing has opened on 156 days, compared with 111 and 23 days respectively, during the same periods in 2018 and 2017.

Crossings in both directions



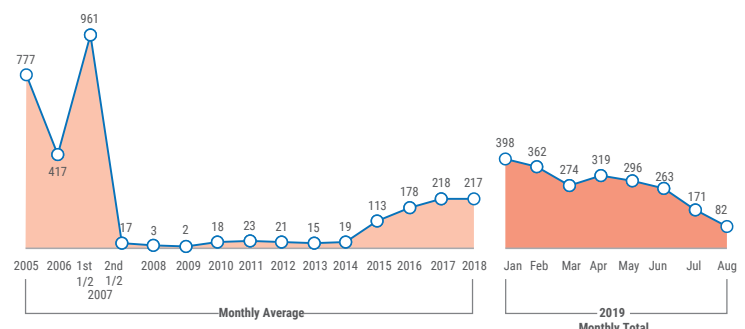
\* Since July 2018, It has been operating five days a week (from Sunday to Thursday).

## MOVEMENT OF GOODS FROM AND INTO GAZA

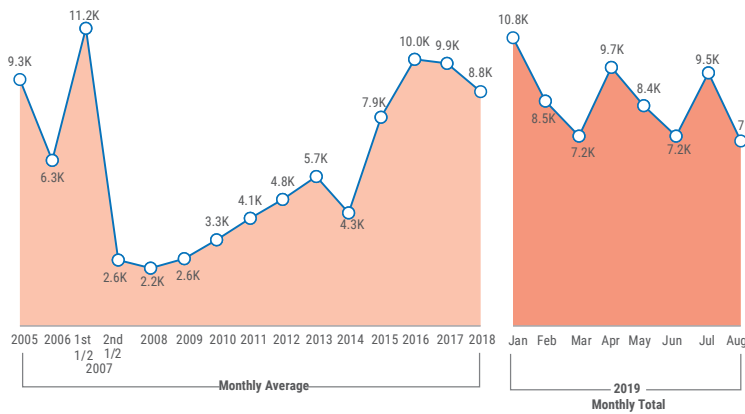
### EXIT OF GOODS

- Authorized goods exited through the Kerem Shalom Crossing on 17 days.
- A total of 82 truckloads exited, which is 22 per cent more than in August 2018, but 91 per cent less than the monthly average in the first half of 2007, before the imposition of the blockade.
- Goods exited to:
  - **West Bank:** 16 truckloads of agricultural produce; 10 of fish; 10 of clothing; 8 of furniture and three of non-edible consumables;
  - **Israel:** 26 truckloads of agricultural produce, scrap metal, plastic pipes and garments;
  - **International markets:** nine truckloads of agricultural produce.
- Kerem Shalom is the only crossing allowing for the regular exit of goods.

Truckloads of goods exiting Gaza



**Truckloads entering Gaza\***

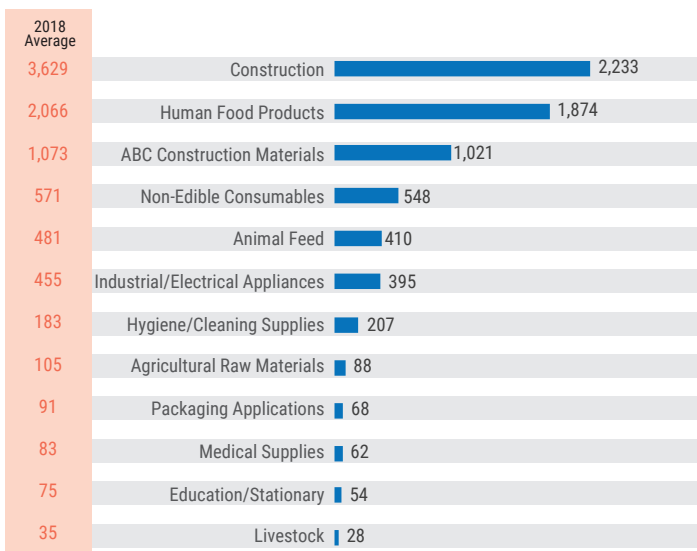


**ENTRY OF GOODS**

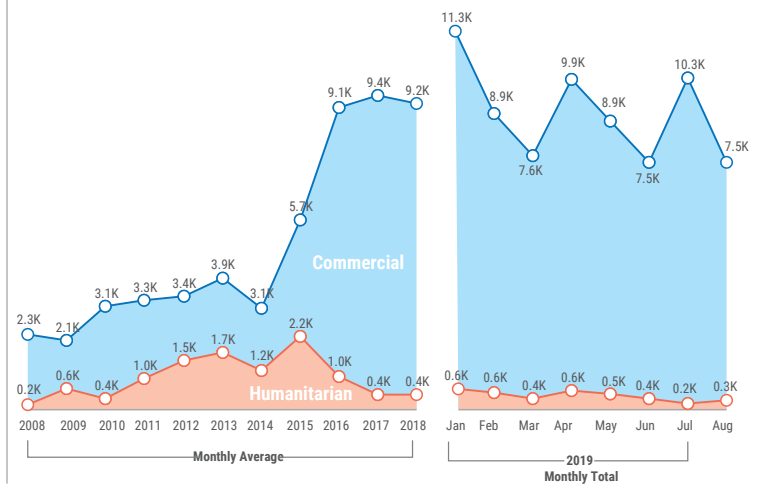
- The Kerem Shalom crossing opened for imports on 19 days (Sunday to Thursday), allowing the entry of 6,497 truckloads of goods, 22 per cent below the monthly average between January and July 2019 (8,226).
- Some four per cent of the goods entered were for humanitarian agencies.
- An additional 491 truckloads of goods entered from Egypt through the Salah ad Din Gate, 8 per cent below the monthly average between January and June 2019 (536).
- 3,083 truckloads entering through Kerem Shalom carried construction materials, constituting the largest category of imports (47 per cent).
- Karni, Sufa and Nahal Oz crossings remained closed by Israel.

\* Figures exclude truckloads carrying fuel.

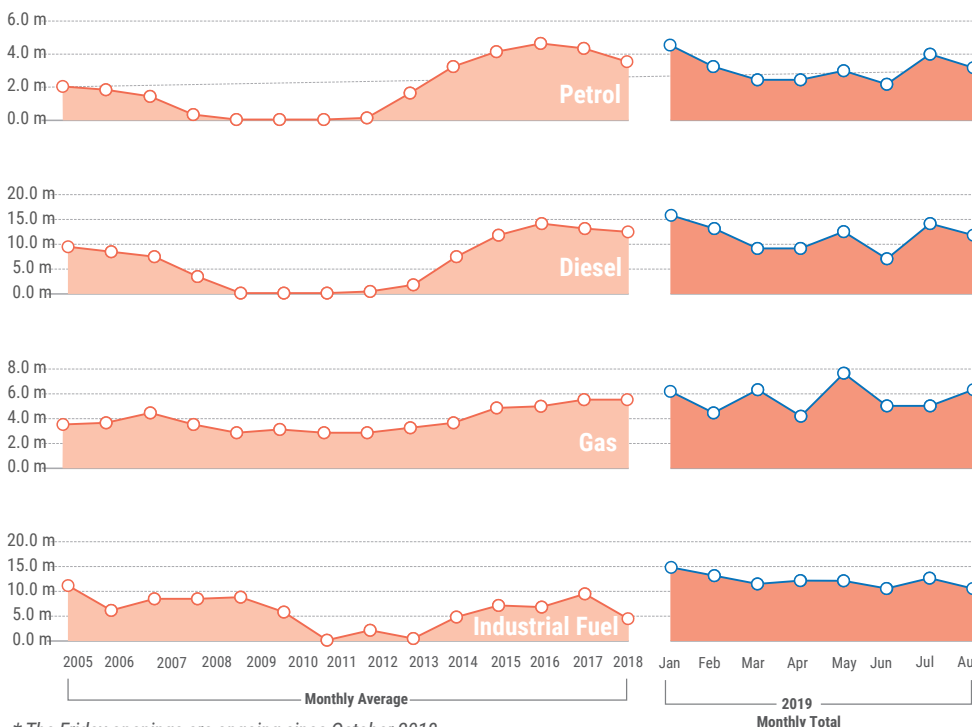
**Goods imported in August 2019 (in truckloads)**



**Humanitarian vs. commercial imports (in truckloads)\***



\*Figures include truckloads carrying fuel.



**FUEL IMPORTS**

Kerem Shalom operated on 25 days for the import of fuel, including on Fridays, during which, Qatari-funded fuel entered for the Gaza Power Plant (GPP)\*.

In total, this allowed the entry of:

- 5.1 million litres of diesel;
  - 1.4 million litres of petrol;
  - 776 tons of cooking gas; and
  - 10.5 million litres of Qatari-funded fuel for the GPP.
- Salah ad Din Gate operated on 12 days for the entry of fuel, allowing the entry of:
- 6.4 million litres of diesel;
  - 1.8 million litres of petrol; and
  - 5,638 tons of cooking gas. The volume of petrol and diesel that entered in August was the same as the monthly average between January and July 2019.

\* The Friday openings are ongoing since October 2018