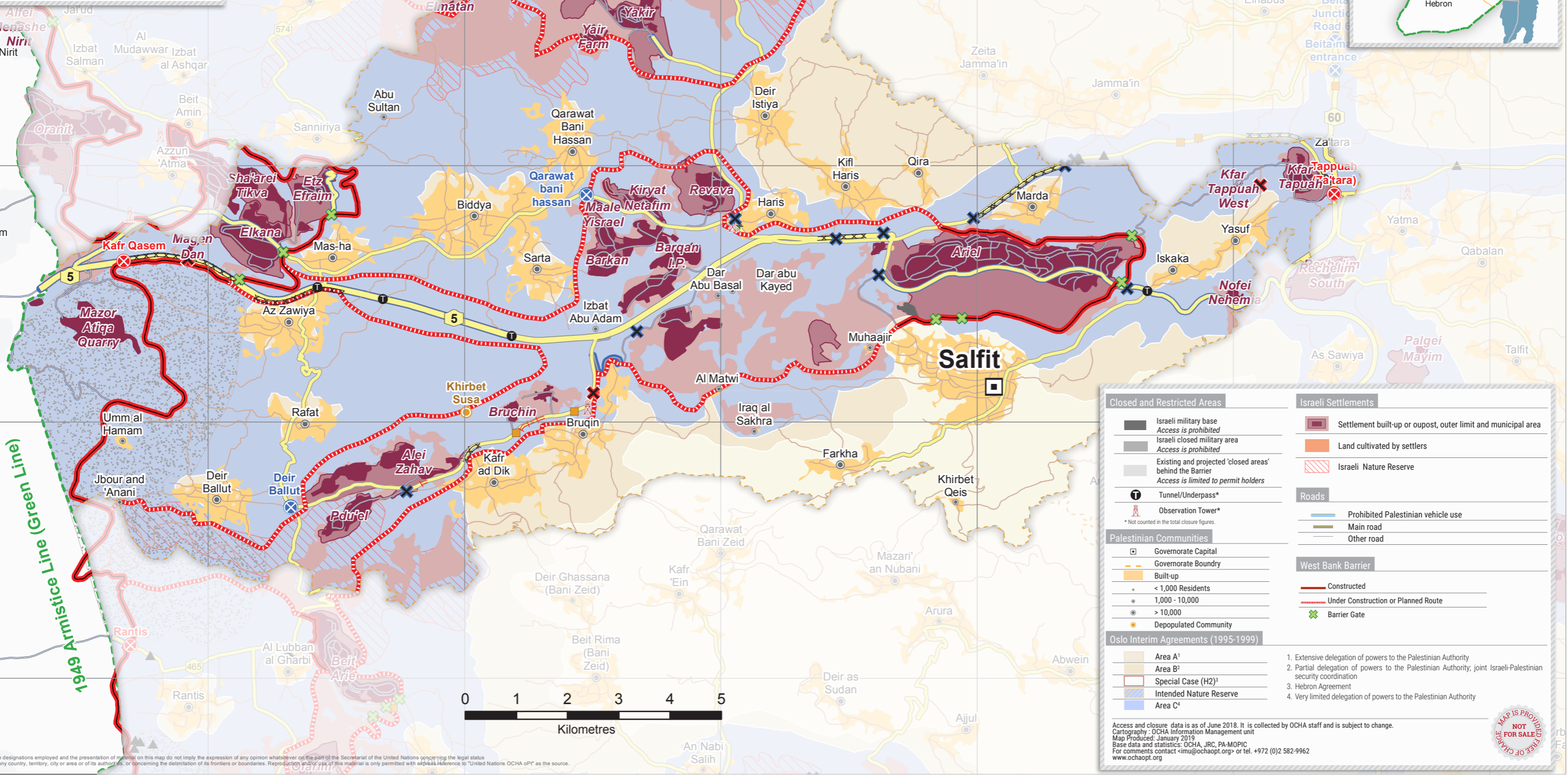
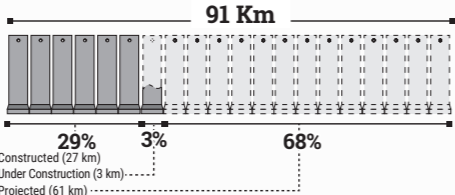


Salfit Closures

⊗	Checkpoints	2
⊗	Green Line Checkpoints	-
⊗	Partial Checkpoints	2
▲	Earthmounds	1
■	Roadblocks	2
⊗	Closed Road Gates	3
⊗	Open Road Gates	11
---	Trenches (752m)	3
⊗	Earth Walls (57m)	1
⊗	Road Barriers (7,567m)	7
TOTAL		32

The Barrier in Salfit



Closed and Restricted Areas

- Israeli military base
Access is prohibited
- Israeli closed military area
Access is prohibited
- Existing and projected 'closed areas' behind the Barrier
Access is limited to permit holders
- Tunnel/Underpass*
- Observation Tower*

Israeli Settlements

- Settlement built-up or outpost, outer limit and municipal area
- Land cultivated by settlers
- Israeli Nature Reserve

Roads

- Prohibited Palestinian vehicle use
- Main road
- Other road

West Bank Barrier

- Constructed
- Under Construction or Planned Route
- Barrier Gate

Palestinian Communities

- Governorate Capital
- Governorate Boundary
- Built-up
 - < 1,000 Residents
 - 1,000 - 10,000
 - > 10,000
- Depopulated Community

Oslo Interim Agreements (1995-1999)

- Area A¹
- Area B²
- Special Case (H2)³
- Intended Nature Reserve
- Area C⁴

- Extensive delegation of powers to the Palestinian Authority
- Partial delegation of powers to the Palestinian Authority, joint Israeli-Palestinian security coordination
- Hebron Agreement
- Very limited delegation of powers to the Palestinian Authority

Access and closure data is as of June 2018. It is collected by OCHA staff and is subject to change.
Cartography: OCHA Information Management Unit
Map Produced: January 2019
Base data and statistics: OCHA, JRC, PA-MOPIC
For comments contact simu@ochaopt.org or tel. +972 (0)2 582-9962
www.ochaopt.org

MAP IS PROVIDED FREE OF CHARGE NOT FOR SALE



The designations employed and the presentation of material on this map do not imply the expression of any opinion whatsoever on the part of the Secretariat of the United Nations concerning the legal status of any country, territory, city or area or of its authorities, or concerning the delimitation of its frontiers or boundaries. Reproduction and/or use of this material is only permitted with express reference to "United Nations OCHA oPt" as the source.