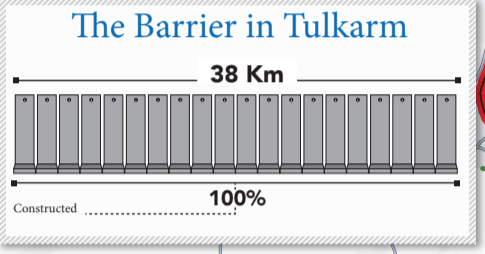


Tulkarem Closures

| | |
|--------------------------|-----------|
| ⊗ Checkpoints | 5 |
| ⊗ Green Line Checkpoints | 2 |
| ⊗ Partial Checkpoints | 2 |
| ▲ Earthmounds | 9 |
| ■ Roadblocks | - |
| ⊗ Closed Road Gates | - |
| ⊗ Open Road Gates | 3 |
| ⊗ Trenches | - |
| ⊗ Earth Walls (3,066m) | 2 |
| ⊗ Road Barriers | - |
| TOTAL | 21 |



Closed and Restricted Areas

- Israeli military base (Access is prohibited)
- Israeli closed military area (Access is prohibited)
- Existing and projected 'closed areas' behind the Barrier (Access is limited to permit holders)
- Tunnel/Underpass*
- Observation Tower*

Israeli Settlements

- Settlement built-up, outer limit and municipal area
- Land cultivated by settlers
- Israeli Nature Reserve

Roads

- Prohibited Palestinian vehicle use
- Main road
- Other road

West Bank Barrier

- Constructed
- Under Construction
- Planned Re-routing
- Barrier Gate
- Planned Route

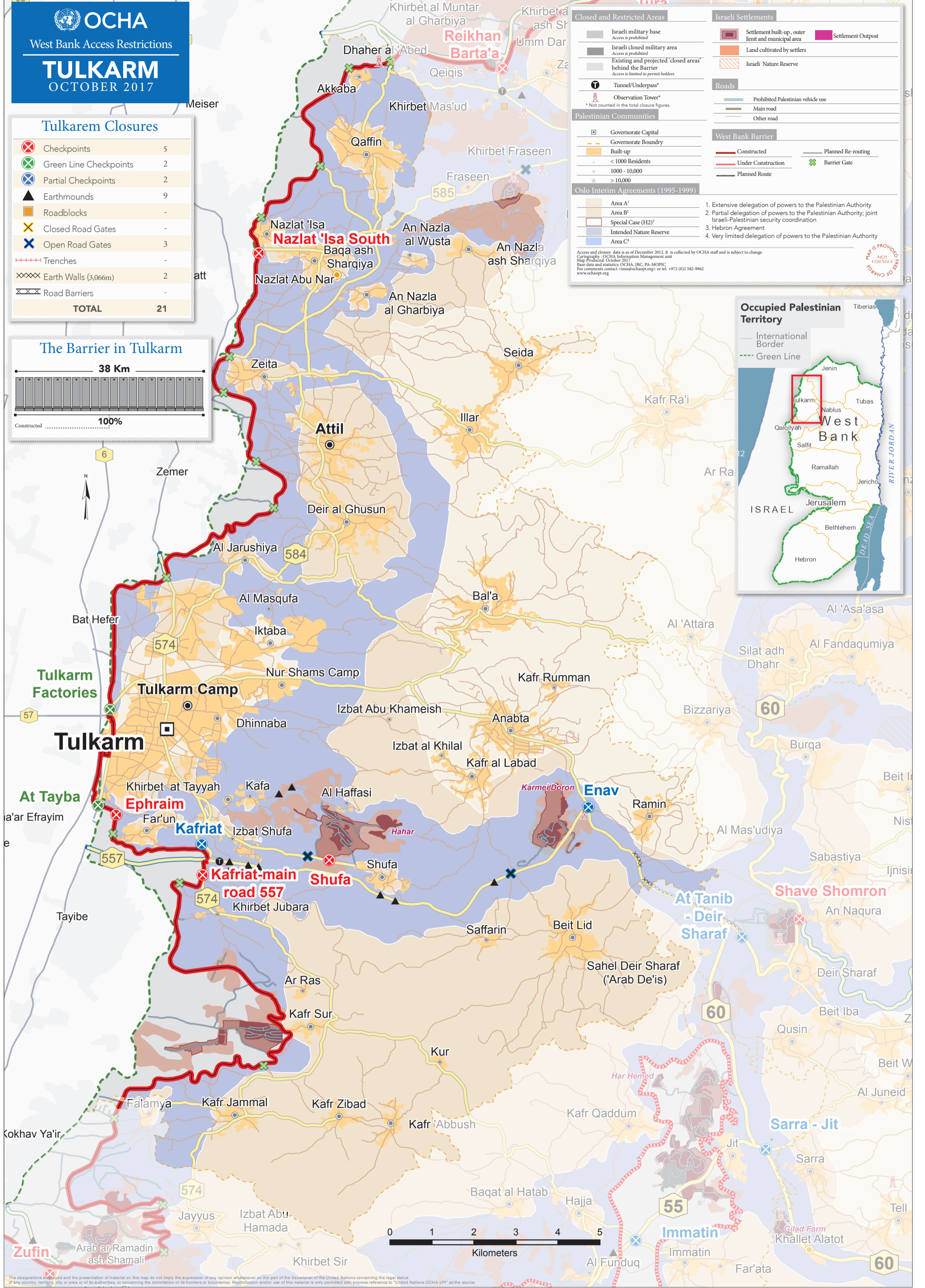
Palestinian Communities

- Governorate Capital
- Governorate Boundary
- Built-up
- < 1000 Residents
- 1000 - 10,000
- > 10,000

Oslo Interim Agreements (1995-1999)

- Extensive delegation of powers to the Palestinian Authority
- Partial delegation of powers to the Palestinian Authority; joint Israeli-Palestinian security coordination
- Hebron Agreement
- Very limited delegation of powers to the Palestinian Authority

Access and closure data is as of December 2012. It is collected by OCHA staff and is subject to change.
Cartography: OCHA Information Management Unit
Map Produced: October 2017
Base data and statistics: OCHA, IBC, PA, MOPPC
For comments contact: cim@ochaopt.org or tel. +972 (0)2 582-9962
www.ochaopt.org



The designations employed and the presentation of material on this map do not imply the expression of any opinion whatsoever on the part of the Secretariat of the United Nations concerning the legal status of any country, territory, city or area or of its authorities, or concerning the delimitation of its frontiers or boundaries. Reproduction and/or use of this material is only permitted with express reference to "United Nations OCHA OPI" as the source.