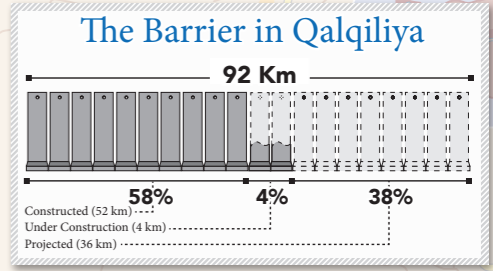
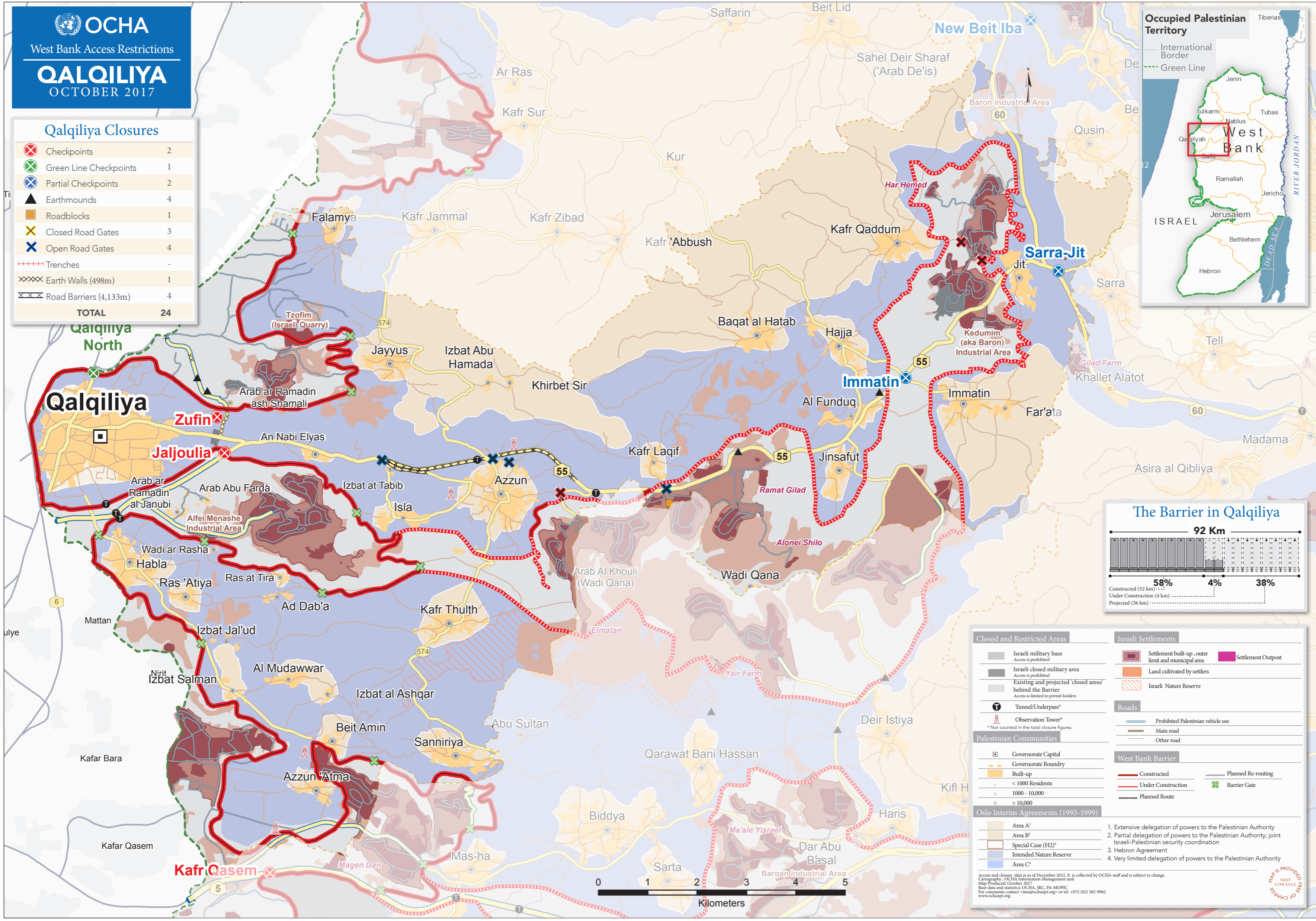


Qalqiliya Closures

⊗	Checkpoints	2
⊗	Green Line Checkpoints	1
⊗	Partial Checkpoints	2
▲	Earthmounds	4
■	Roadblocks	1
⊗	Closed Road Gates	3
⊗	Open Road Gates	4
----	Trenches	-
XXXX	Earth Walls (498m)	1
XXXX	Road Barriers (4,133m)	4
TOTAL		24



Closed and Restricted Areas

- Israeli military base (Access is prohibited)
- Israeli closed military area (Access is prohibited)
- Existing and projected 'closed areas' behind the Barrier (Access is limited to permit holders)
- Tunnel/Underpass*
- Observation Tower*

Israeli Settlements

- Settlement built-up, outer limit and municipal area
- Land cultivated by settlers
- Israeli Nature Reserve

Roads

- Prohibited Palestinian vehicle use
- Main road
- Other road

West Bank Barrier

- Constructed
- Under Construction
- Planned Route
- Planned Re-routing
- Barrier Gate

Palestinian Communities

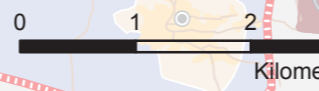
- Governorate Capital
- Governorate Boundary
- Built-up
- < 1000 Residents
- 1000 - 10,000
- > 10,000

Oslo Interim Agreements (1995-1999)

- Area A¹
- Area B²
- Special Case (H2)³
- Intended Nature Reserve
- Area C⁴

1. Extensive delegation of powers to the Palestinian Authority
2. Partial delegation of powers to the Palestinian Authority; joint Israeli-Palestinian security coordination
3. Hebron Agreement
4. Very limited delegation of powers to the Palestinian Authority

Access and closure data is as of December 2012. It is collected by OCHA staff and is subject to change.
Cartography: OCHA Information Management Unit
Map Produced: October 2017
Base data and statistics: OCHA, IRC, PA-MOPIC
For comments contact: cim@ochaopt.org or tel. +972 (0) 582-9962
www.ochaopt.org



MAP IS PROVIDED FREE OF CHARGE
NOT FOR SALE