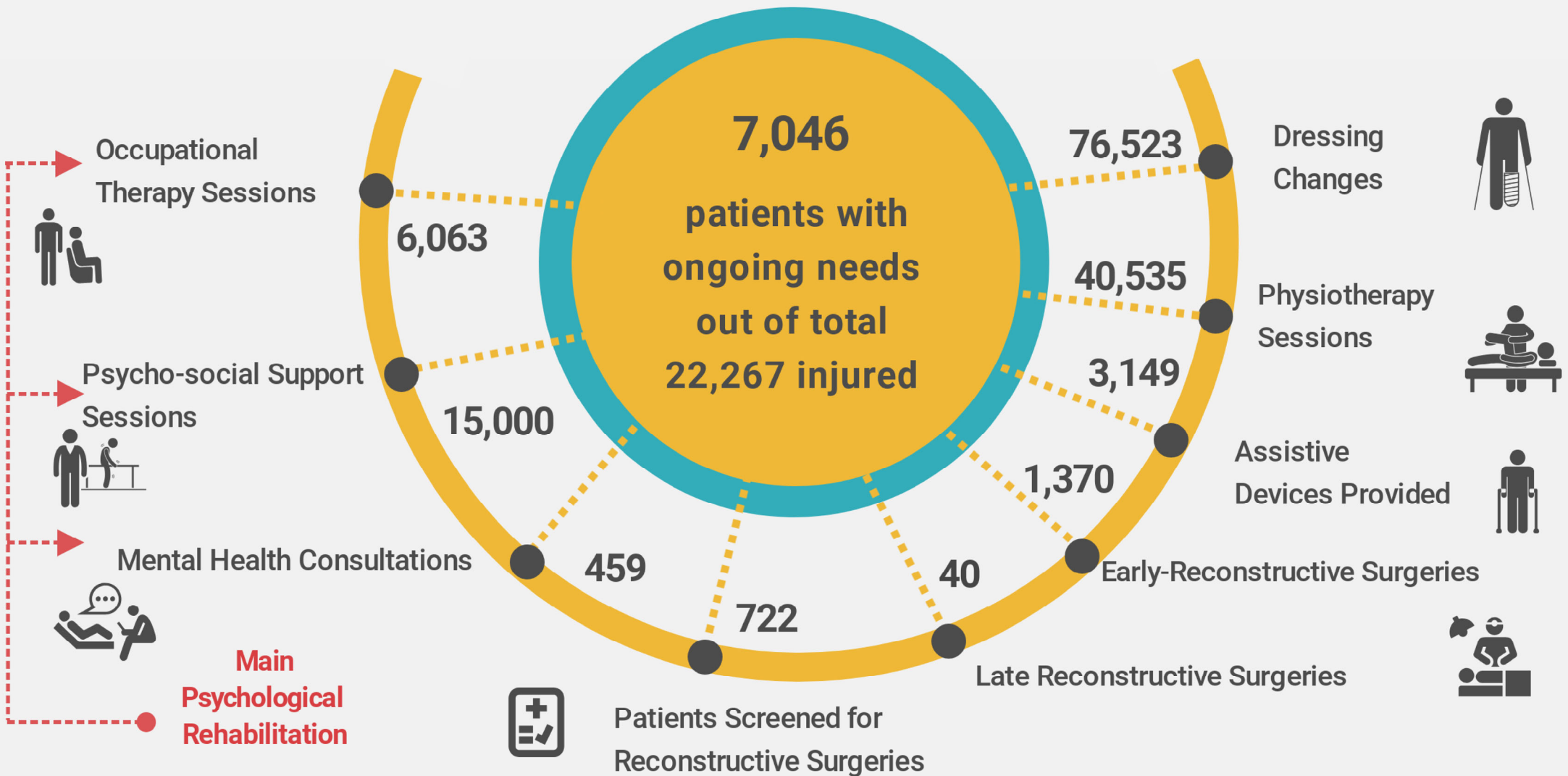


30th March - 6th October 2018



"Post-operative care and Rehabilitation are key steps in the trauma pathway. By ensuring quality physical and mental rehabilitation we increase the chances of a successful patient reintegration into society and reduce the long term burden of chronic disease and disability"

Trauma management and emergency healthcare require US \$ 20 Million, to continue the trauma response in Gaza until December 2018

For further information: Nelson Olim, olimn@who.int or Sara Halimah, halimas@who.int