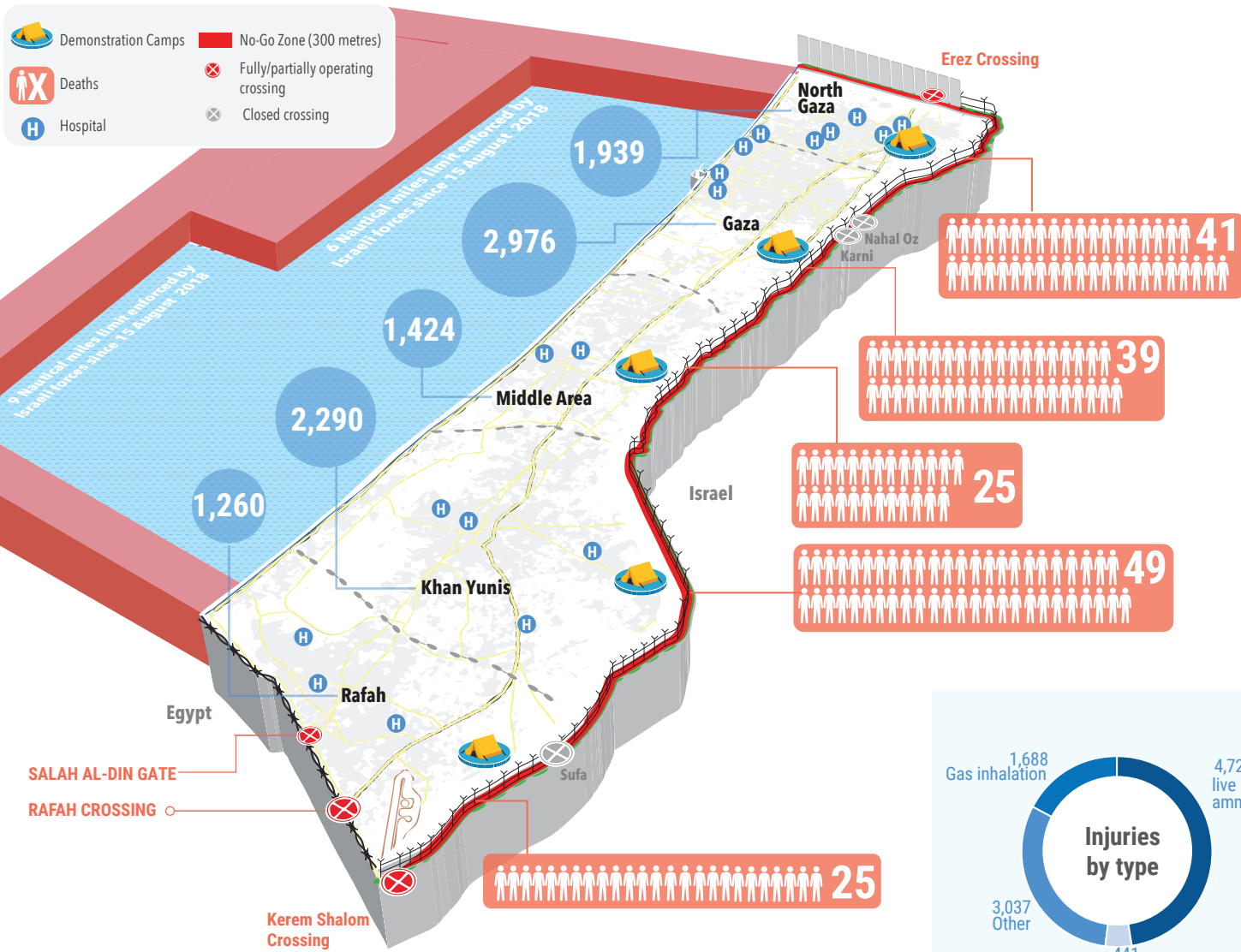


OVERVIEW

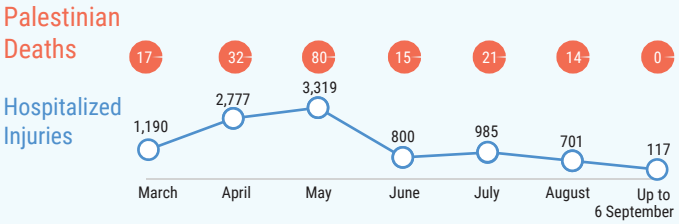
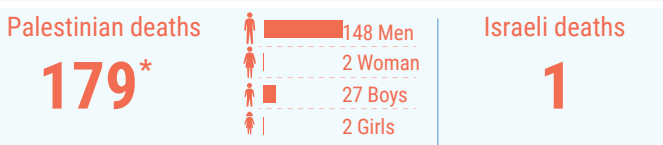
Since 30 March 2018, the Gaza Strip has witnessed a significant increase in Palestinian casualties in the context of mass demonstrations taking place along Israel's perimeter fence with Gaza and hostilities. The large number of casualties among unarmed Palestinian demonstrators, including a high percentage of demonstrators hit by live ammunition, has raised concerns about excessive use of force by Israeli troops. Despite significant assistance provided, Gaza's health sector is struggling to cope with the mass influx of casualties, due to years of blockade, the internal divide and a chronic energy crisis, which have left essential services in Gaza barely able to function.



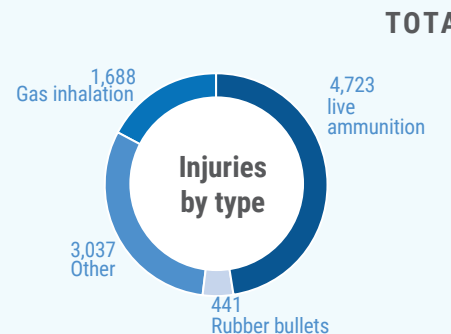
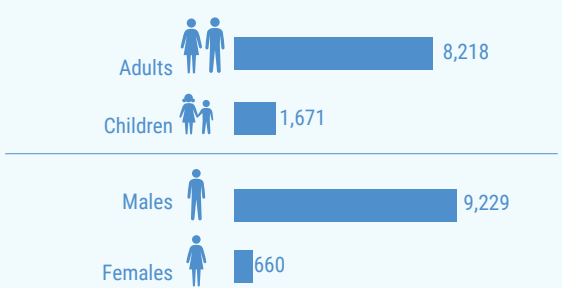
KEY HUMANITARIAN NEEDS

- Rapid deployment of quality-assured emergency medical teams to conduct complex lifesaving surgery.
- Procurement of essential drugs, disposables and medical equipment.
- Enhancement of post-operative and rehabilitative care through multi-disciplinary rehabilitation teams.
- Legal aid to address restrictions impeding medical patients from receiving treatment outside Gaza.
- Mental health and psychological support for children and families impacted by violence.
- Procurement of emergency fuel to run back-up generators at 54 critical health facilities.
- Monitoring and documentation of the differentiated impact of the situation on men, women, boys and girls.

TOTAL CASUALTIES 30 March - 6 September till 12:00 PM



TOTAL HOSPITALIZED INJURIES



Source of Palestinian casualty data: OCHA, Palestinian Ministry of Health in Gaza.
Source of Israeli casualty data: Israeli media.

*This figure includes 130 Palestinians killed during the demonstrations and 49 killed in other circumstances; among the latter are eight people whose bodies are reportedly being withheld by the Israeli authorities.

Disclaimer: Data and analysis provided in this snapshot is based on preliminary information available. Further assessments are pending.