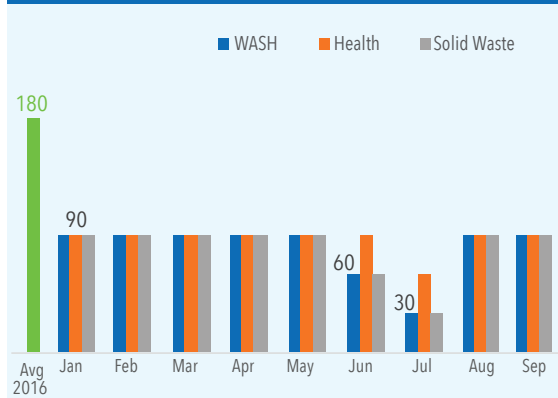


Against the backdrop of 10 years of Israel's land, air and sea blockade, there has been an escalation in the internal Palestinian divide, since March 2017, which exacerbated Gaza's energy crisis and resulted in outages of 18-20 hours a day. Additionally, the salary crisis in the public sector in Gaza has worsened; thousands of civil servants have been reportedly referred for early retirement; and the financial approval for the referral of hundreds of patients outside Gaza has been reportedly delayed/disrupted. These developments have impacted the availability of essential services and the livelihoods of Gaza's two million residents. The following indicators were identified by the Humanitarian Country Team (HCT) to monitor the evolution of the crisis, trigger humanitarian action and prevent further deterioration. An agreement reached in late September 2017 between Fatah and Hamas may pave the way for a resolution of the internal Palestinian divide, and potentially reverse some of the negative trends highlighted in this snapshot.

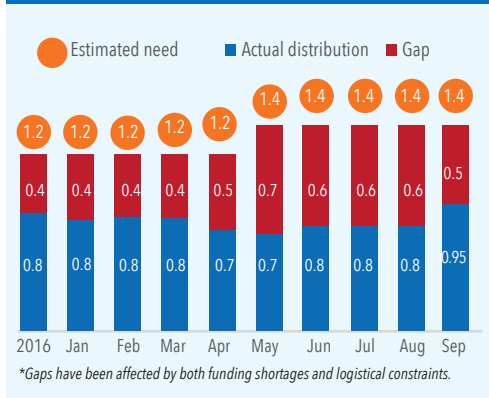
## EMERGENCY FUEL

To allow for the maintenance of a minimum level of critical services, humanitarian agencies provide emergency fuel to health, water and sanitation, and solid waste collection facilities, to run backup generators and vehicles. The number of facilities benefiting from this support has increased from 189 at the beginning of the crisis in March of this year, to 247 in September.

### FUEL RESERVES LEVEL AT CRITICAL FACILITIES (IN # OF DAYS)

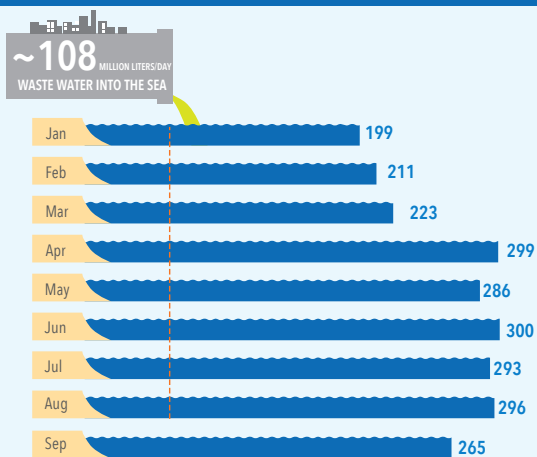


### GAPS IN EMERGENCY FUEL DELIVERIES (IN MILLION LITRES)\*



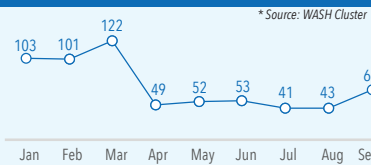
## WATER, SANITATION AND HYGIENE

### POLLUTION LEVELS OF WASTEWATER FLOWS INTO THE SEA (IN MG/LITRE OF BOD\*)

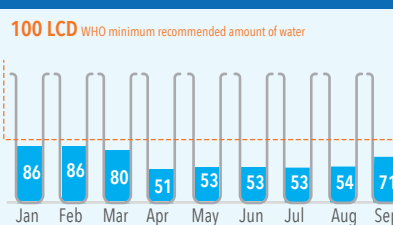


\* Biological Oxygen Demand (BOD) is an indicator of water pollution levels, which are linked to the effectiveness of wastewater treatment.

### VOLUME OF CLEAN WATER PRODUCED BY WATER DESALINATION PLANTS PER MONTH (TCM)



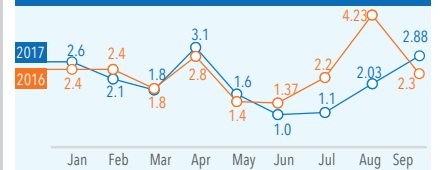
### ACCESS TO PIPED WATER LITER PER CAPITA PER DAY



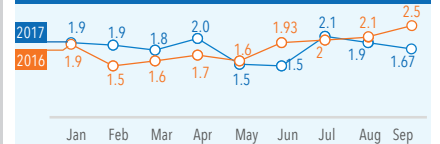
\* Due to its poor quality, piped water is used for domestic purposes other than drinking and cooking. For the latter, people rely mostly on buying tankered desalinated water from unregulated water vendors.

## FOOD-SECURITY

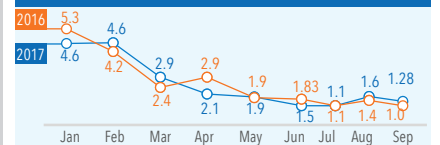
### AVERAGE PRICE OF TOMATO (ILS/KG)



### AVERAGE PRICE OF POTATO (ILS/KG)



### AVERAGE PRICE OF EGGPLANT (ILS/KG)



Note: Vegetable prices can only be compared based on seasonality

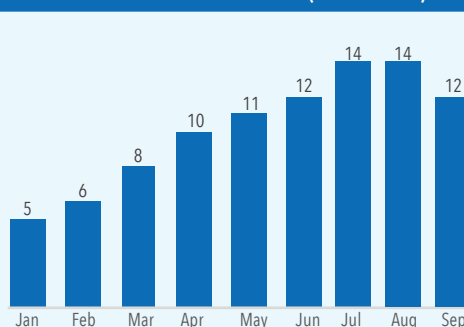
## HEALTH

### FINANCIAL APPROVALS OF MEDICAL REFERRALS (# OF PATIENTS)\*



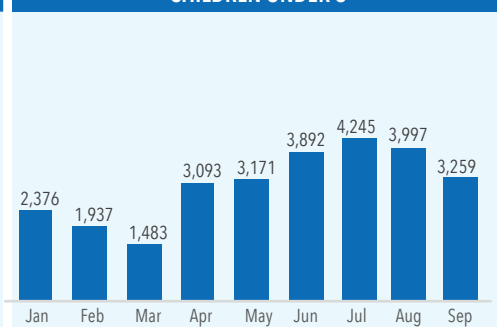
\* Financial approvals are granted by the West Bank-based Ministry of Health

### AVERAGE WAITING TIME FOR E.N.T.\* ELECTIVE SURGERY AT SHIFA HOSPITAL (IN MONTHS)



\* ENT: Ear, nose and throat  
\* Postponement of elective surgeries is a measure adopted by hospitals to cope with the energy shortages.

### DIARRHEA CASES AMONG CHILDREN UNDER 3



\* The incidence of diarrhea is an indicator of the quality of water, sanitation and hygiene services and habits.