

1.88 Million – Total population

1.33 Million (70%) registered refugees
Source: PCBS 2016

365 km² Total Area

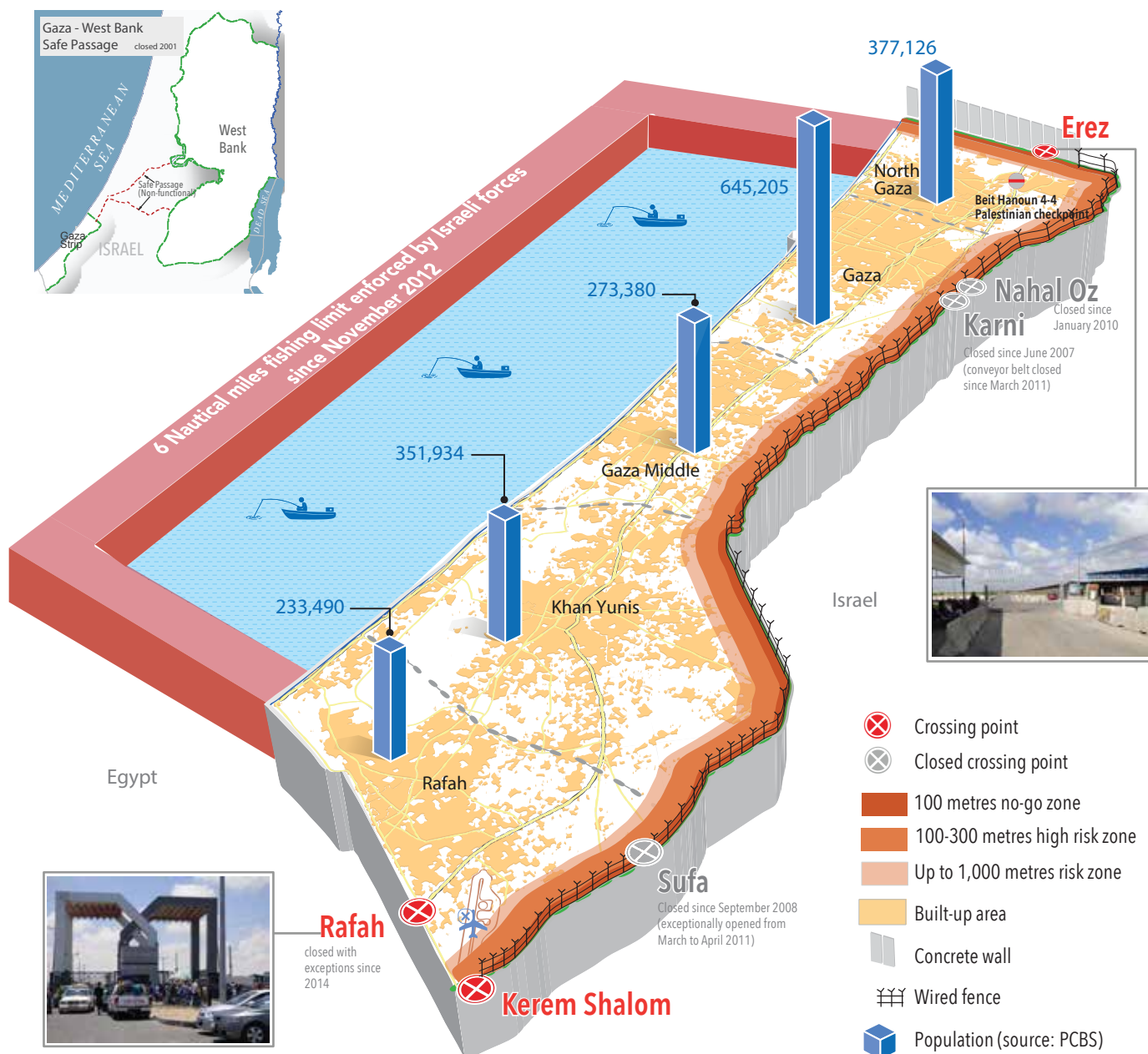
5,154
Inhabitants per Km²
Source: PCBS 2016 Q4

97%
Of piped water is unfit for human consumption
Source: WASH Cluster

47%
of the population is food insecure
Source: FSS

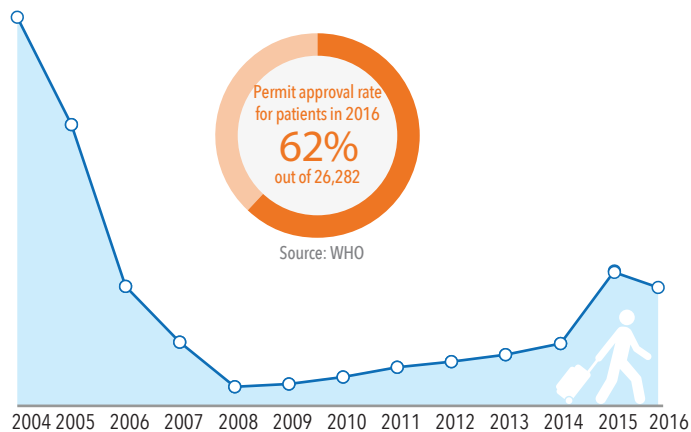
12-16 HOURS
of scheduled electricity outages are implemented across Gaza per day.
Source: GDECO

40.6%
Unemployment rate
61% Youth (M 53.6%, F 87.6%)
43.7% Refugees
65.3% Women
Source: PCBS 2016 Q4



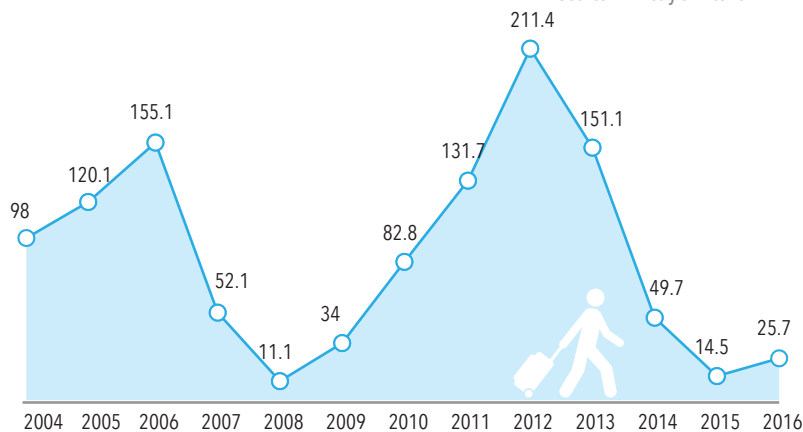
Departures through Erez crossing with Israel (in thousands)

Source: Ministry of Civil Affairs

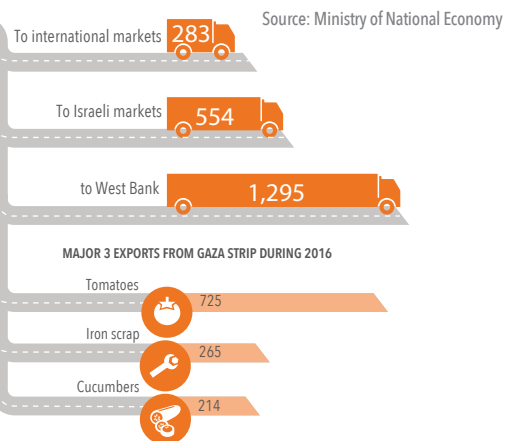
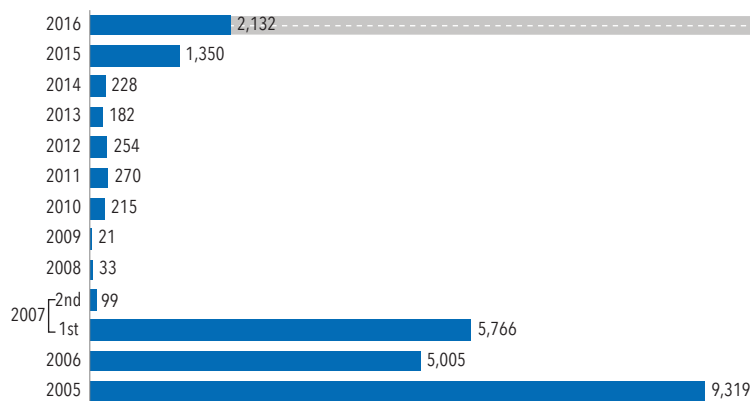


Departures through Rafah crossing with Egypt (in thousands)

Source: Ministry of Interior

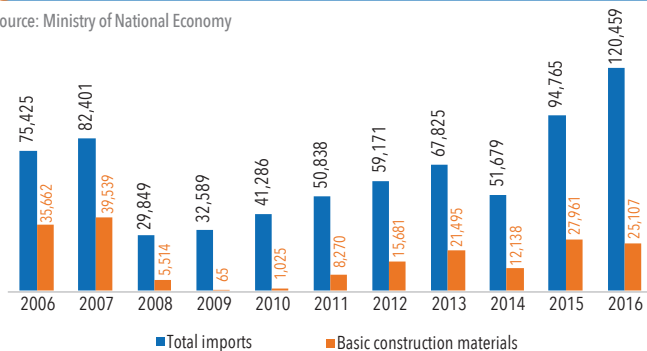


Exit of goods (in truckloads)



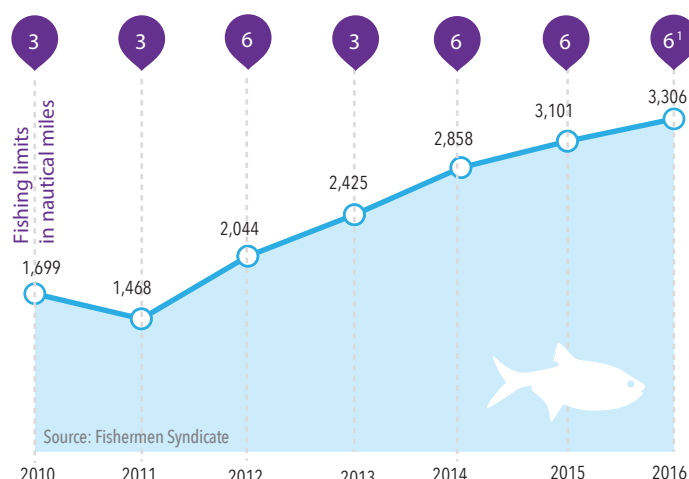
Basic construction materials out of total imports (in truckloads)

Source: Ministry of National Economy



Basic construction materials only includes construction materials which its entry to Gaza is restricted by Israel such as cement and steel bars; aggregate were removed from the "dual use" list in 2015

Fish catch (in tons)



1. From 3 April to 26 June 2016, Israel expanded the fishing area along the southern Gaza coast from 6 to 9 nautical miles, while retaining 6 nautical mile fishing limit along the northern coast.

Fuel imports

Source: Ministry of National Economy

