

LLDC3-ROAD TO RWANDA



KIGALI CONVENTION CENTER

The LLDC3 will be held in the landmark Kigali Convention Center (KCC), the first convention center in Rwanda and the largest in the region.

Its unique design integrates all facilities and functional technology with a clear reference to the culture and traditions of Rwanda.

Just 2 km from several government embassies, the British High Commission, the Parliament and the Supreme Court.

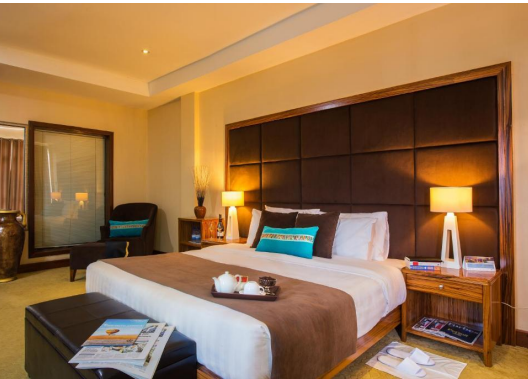


RADISSON BLU HOTEL

The Radisson Blu Hotel is conveniently connected to the Convention Center, located approximately 3 miles or 5 kilometers away from the heart of Kigali and the Kigali International Airport (KGL)



OTHER HOTELS



Kigali Marriott, The Retreat, Four Points by Sheraton, Urban by CityBlue, Kigali Serena Hotel, Park Inn by Radisson, and Hotel Des Mille Collines plus many more accommodations

USEFUL INFORMATION



AIRPORT

Facilities: Kigali International Airport, situated in the capital city of Rwanda, offers modern amenities such as duty-free shops, lounges, currency exchange, and dining option.

Transportation: Taxis and car rental services are available, providing convenient options for travel from the airport.

Currency Exchange: The airport provides currency exchange services, allowing travelers to convert their money to Rwandan Francs (RWF). Also note, many establishments also accept payments in USD.

ARRIVALS & DEPARTURES

Upon arrival and departure at the Kigali International Airport, protocol courtesies will be observed for VVIPs/VIP and will be assisted on all arrival and departure formalities.

All other delegates will be guided towards the dedicated LLDC3 Immigration Lane and will be required to present their accreditation confirmation at this point.

A dedicated LLDC3 information desk will be available in the arrivals area.

CONNECTIVITY




Open to the world
#3 for visa openness in Africa
#3 most accepting country of migrants in the world


1h25 to Nairobi
3h50 to Johannesburg
6h40 to Doha
7h00 to Mumbai
10h05 to London

Source: Rwanda Civil Aviation Authority, Expedia

USEFUL INFORMATION

VISAS

All Commonwealth, African Union and Francophonie citizens travelling with standard passports will be issued with a gratis visa upon arrival at all border posts . For further information on the Rwandan visa regime, please check the following site: [https:// migration.gov.rw/visa](https://migration.gov.rw/visa).

All visitors travelling with non-Commonwealth, non-African Union and non-Francophonie passports will be issued with a visa upon arrival at a cost of USD 50.

Official representatives holding Diplomatic and Service/Official passports or laissez-passer of the AU, EU or UN travelling to Rwanda to attend the LLDC3 conference will be issued with a free visa upon arrival.



USEFUL INFORMATION



CUSTOMS

A dedicated lane will be in operation for the entirety of LLDC3 through which all delegations shall be processed. Normal customs procedures will be upheld for all delegates with exemptions only for Heads of State/Government and Spouses, Ministers, and Special Guests.



CLIMATE

Rwanda's long dry season lasts from the end of June to the end of August. Daily high temperatures are around 23°C (79°F), rarely falling below 23°C (75°F) or exceeding 28°C (83°F). Overnight temperatures are generally mild with an average low of 15 °C (59 °F).



BAGGAGE CLAIM

Should luggage be lost, a dedicated lost luggage service desk will be available for assistance. Delegates can choose to have their luggage delivered to their hotel, subject to a fee, or to collect it at the airport at no cost.



PLASTICS BAGS

As part of an environmental protection policy, plastic bags are not allowed in Rwanda. Passengers entering Kigali International Airport (KIA), or any other border posts with plastic bags are required to discard them. An environmentally friendly alternative will be provided at no cost.

USEFUL INFORMATION



ACCOMMODATION

The Government of Rwanda will facilitate accommodation booking to Heads of State/Government and accompanying delegations. Lists of recommended hotels will be available for other delegates.



TRANSPORT

The Government of Rwanda will facilitate ground transportation for official delegations.

Further information on courtesies will be communicated in due course.



TELECOMMUNICATION

Telecommunication services are facilitated by two prominent mobile service providers: MTN and Airtel. These companies not only offer mobile telephony services but also provide internet connectivity through various technologies, including GPRS, 3G, and 4G.



HEALTH SERVICES

Health services will be available at Kigali Convention Centre with ambulance services available for transport to an appropriate health facility, if required.



Thank You.

For more information about Rwanda.

Visit the website : <http://visitrwanda.com>

