

Boosting Social Actions in Support of SDGs 3 & 4 on the Region of Madrid.

Region of Madrid - Canal de Isabel II

August 2021



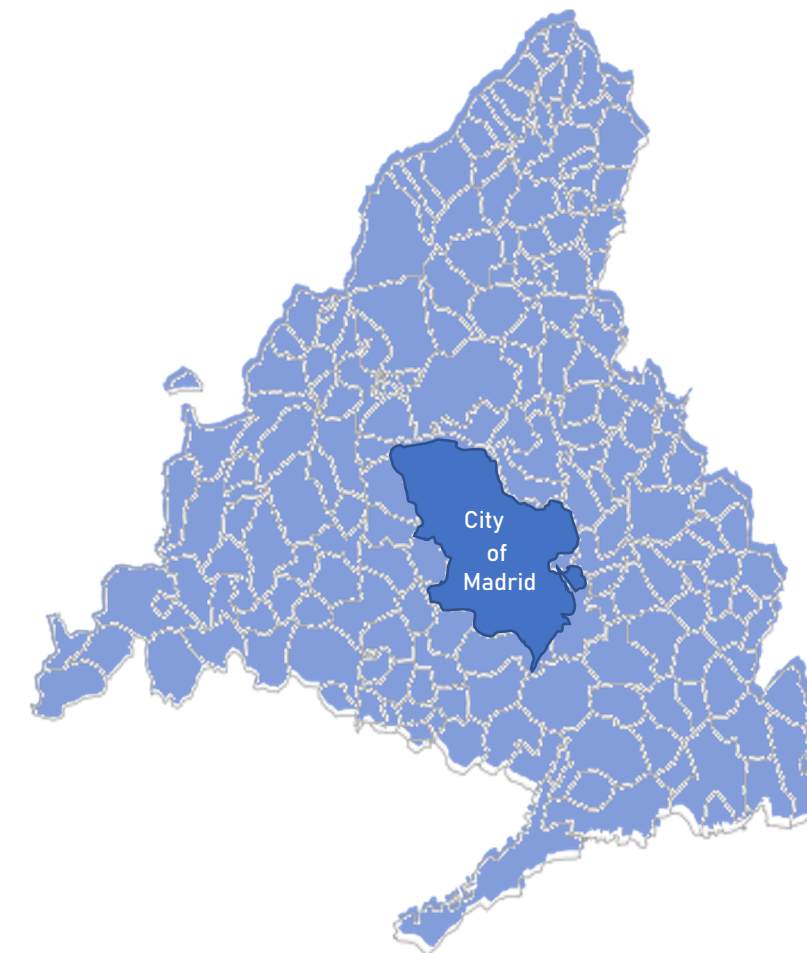
DEPARTMENT OF
**ECONOMIC AND
SOCIAL AFFAIRS**



SUSTAINABLE
**WATER &
ENERGY**
SOLUTIONS
NETWORK

Canal de Isabel II

Region of Madrid



Canal
de Isabel II



Capital of Spain, Madrid



Group of Canal de Isabel II



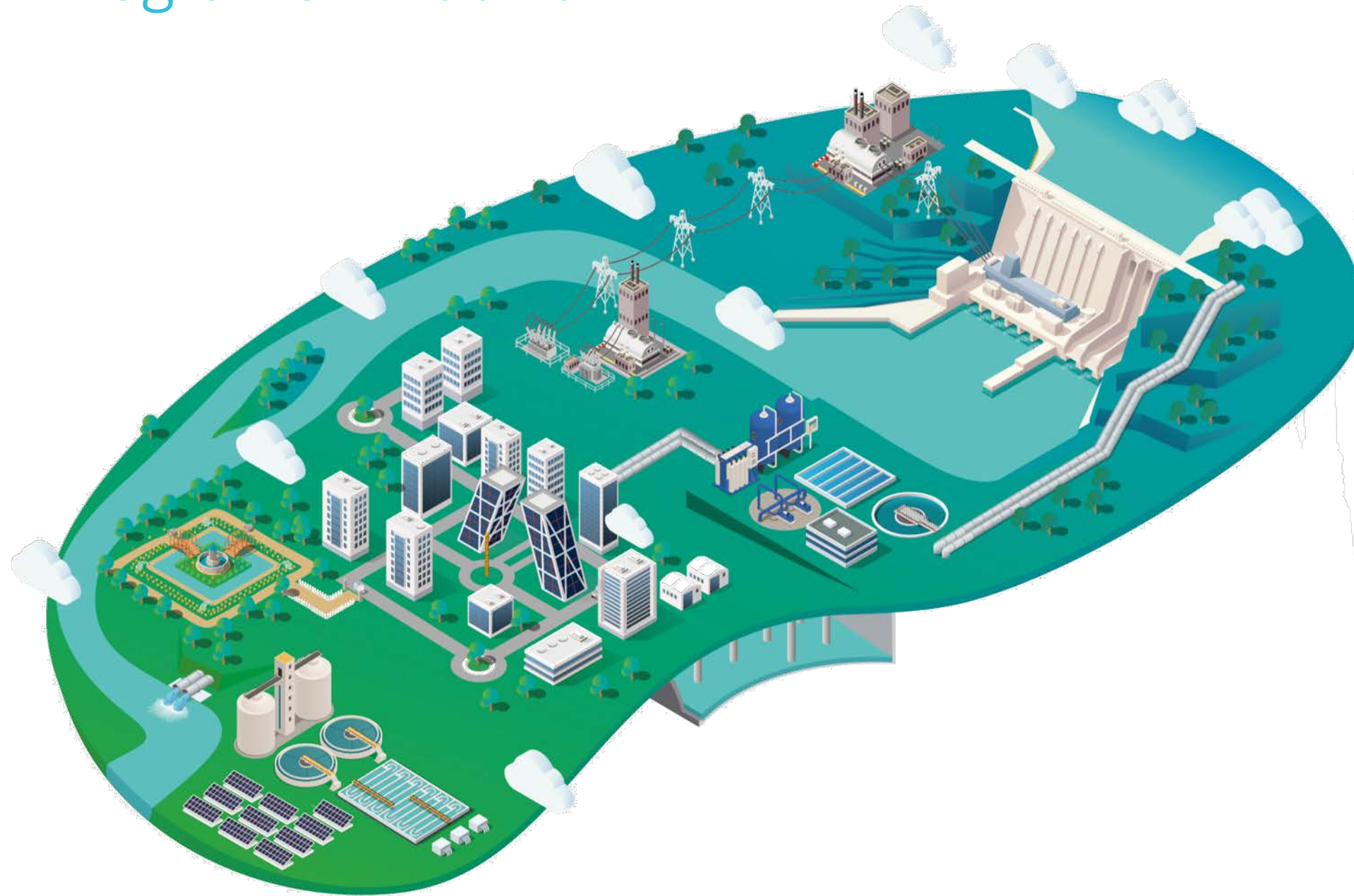
- Water cycle management
- Support services for water cycle management
- Telecommunication and IT
- Electric power production



SUSTAINABLE
**WATER &
ENERGY**
SOLUTIONS
NETWORK

Canal de Isabel II *key figures*

Region of Madrid



6.56/6.77 million inhabitants served (supply / sanitation)

488.27 hm³ treated in WWTP

125.93 hm³ of regenerated water

12.01 hm³ of water reused

2,924 employees.

131.6 mill. € invested.

107.64 MW installed for electricity generation.

378.80 millions KWh produced (68% of consume)

127.89 litres per capita per day of domestic consumption

Canal
de Isabel II



3 GOOD HEALTH AND WELL-BEING



4 QUALITY EDUCATION



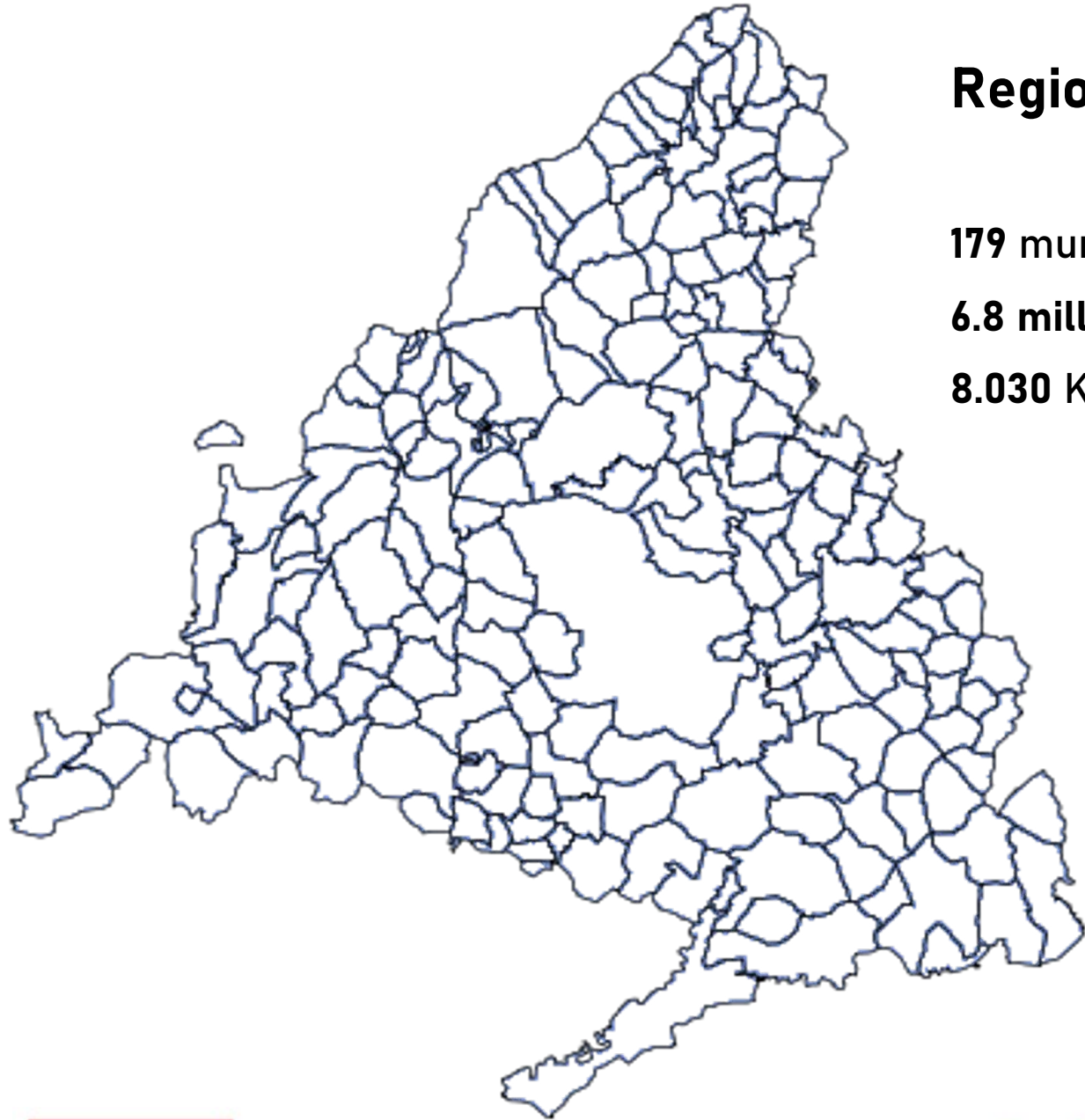
SUSTAINABLE
**WATER &
ENERGY**
SOLUTIONS
NETWORK



6 CLEAN WATER
AND SANITATION



A succesful integrated management model



Region of Madrid

179 municipalities

6.8 million population

8.030 Km²



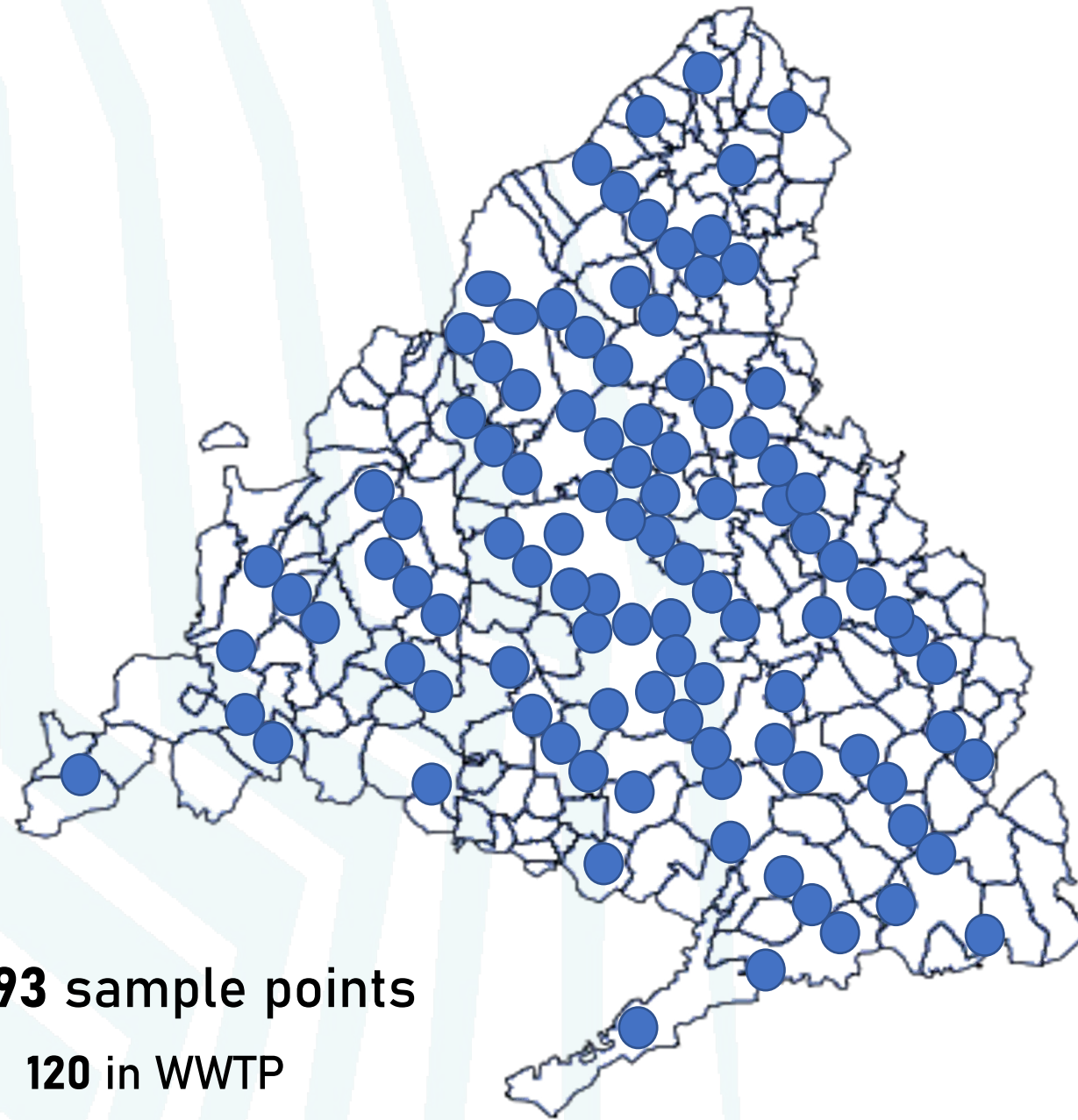
**Comunidad
de Madrid**

Canal
de Isabel II



Vigía system

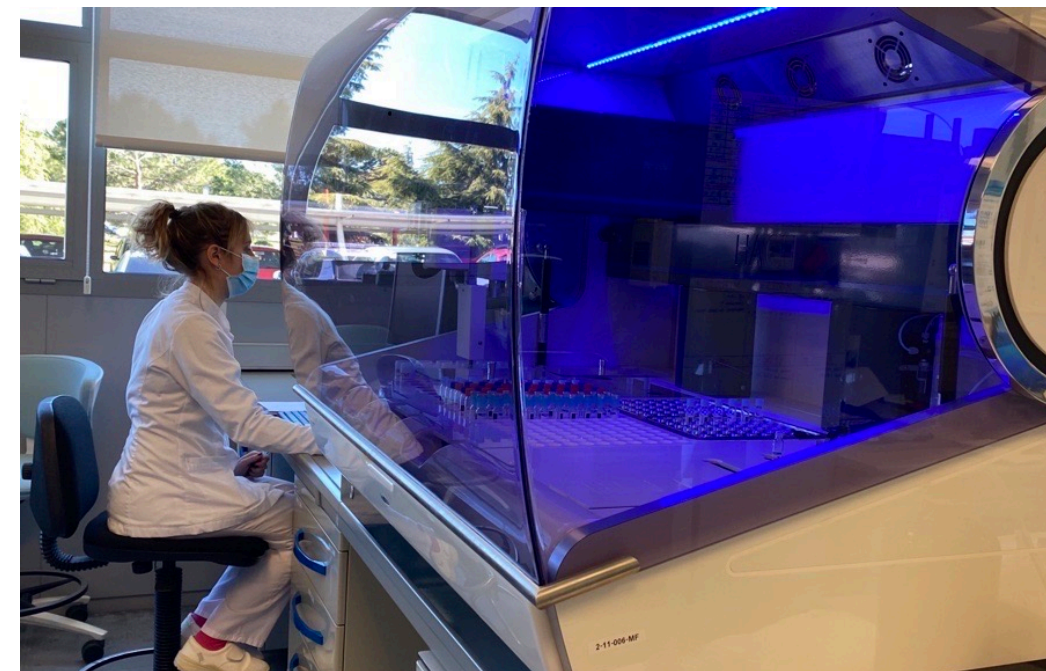
Vigía system the tool for SarS-CoV-2 detection on wastewater



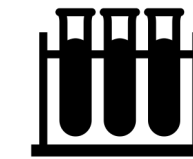
293 sample points

120 in WWTP

173 in sewer manholes



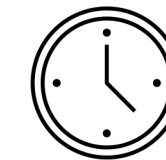
3 laboratories



Simple samples



**Refrigerate
Samples**



**Same time
for every point**

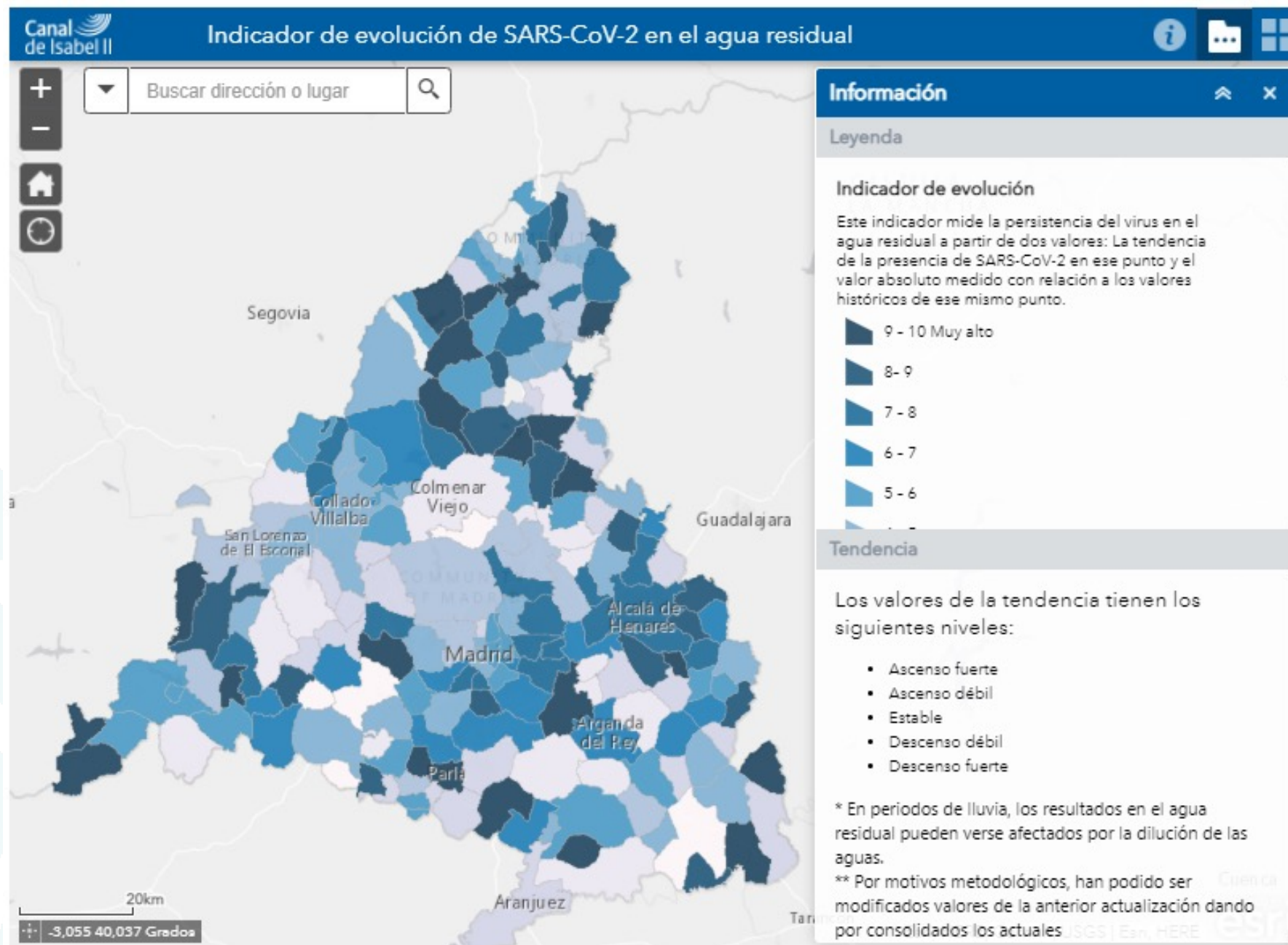


**PCR
(copies per
volume)**



SUSTAINABLE
**WATER &
ENERGY**
SOLUTIONS
NETWORK

Vigía system information available on Canal de Isabel II website



VÍDEO



SUSTAINABLE
**WATER &
ENERGY**
SOLUTIONS
NETWORK

4 QUALITY EDUCATION



Canal
de Isabel II



SUSTAINABLE
**WATER &
ENERGY**
SOLUTIONS
NETWORK

Canaleduca



Canal Educa is an educational program on the sustainable use of water and the search for solutions to climate change.

Aimed at **students** of any educational stage: Infant, Primary, Secondary and High School.

How?

Face-to face, webinars, visits to facilities, bilingual.



30.000

participants per year



25

years of this initiative



Center for advanced water studies



A **specialization programme** for future water professionals in Spain and in other countries.

Medium-grade and **Superior**, as well as university **postgraduates** of all kinds: engineers, scientists, lawyers and economists.

Internships on Canal and water sector companies in the second year.



100 
students per year

Dual 
programme



Sensibilization campaigns

EN LA COCINA

CIERRA EL GRIFO
CIERRA EL GRIFO MIENTRAS TE ENJABONAS LAS MANOS

DESCONGELA LOS ALIMENTOS EN LA NEVERA
DESCONGELA LOS ALIMENTOS EN LA NEVERA. NO LO HAGAS BAJO EL GRIFO. AHORRARÁS AGUA Y GANARÁS EN SABOR.

LLENARLA ES MI MISIÓN
PARA QUE SE ENFRIE EL AGUA, PON UNA JARRA EN LA NEVERA. SIN GASTO ADICIONAL.

UTILIZA EL LAVAVAJILLAS
PON EL LAVAVAJILLAS LLENO Y, SI LAVAS, CORRER EL AGUA.

30 LITROS AHORRADOS EN CADA LAVADO

6 LITROS AHORRO DE AGUA

20 LITROS AHORRADOS EN CADA LAVADO

50% AHORRO DE AGUA

7 LITROS AHORRO

ASÍ EMPLEARÁS MENOS AGUA EN LA LIMPIEZA DEL FILTRO.

[HTTPS://WWW.CANALDEISABELSEGUNDA.ES](https://www.canaldeisabelsegunda.es)

4 QUALITY EDUCATION

MA
MONSTRUO DE LAS TOALLITAS
USANDO ÚNICAMENTE LA PAPELERA.

COMPRAR PRODUCTOS ECOLÓGICOS

A+
ADEMÁS DE AGUA, AHORRARÁS ENERGÍA.

40% AHORRO DE AGUA

LAS PLANTAS CRECEN MÁS SANAS
EL AGUA QUE USAS PARA HERVIR VERDURAS. PUEDE SERVIRTE PARA RIEGAR LAS PLANTAS.

¡AYUDA A MATILDA! NO ALIMENTES AL MONSTRUO DE LAS TOALLITAS.

RECUERDA: LAS TOALLITAS, A LA PAPELERA.

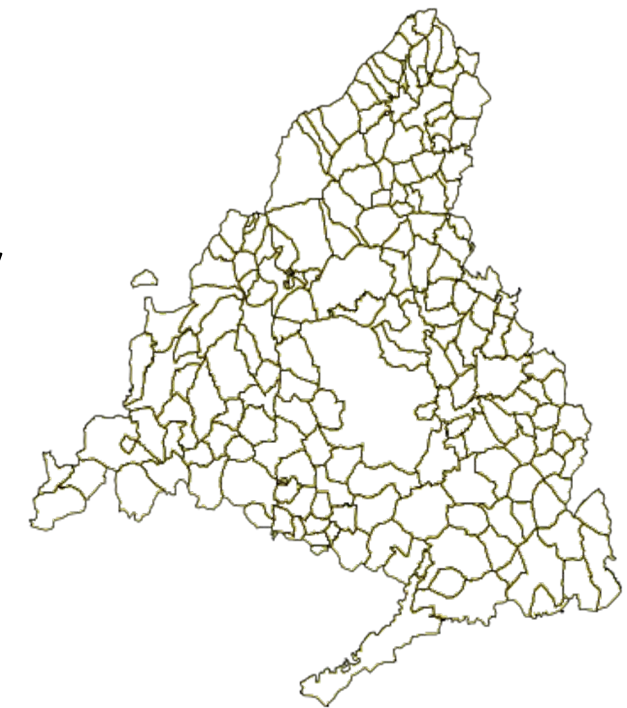
Canal de Isabel II

www.canaldeisabelsegunda.es

AINABLE TER & ENERGY SOLUTIONS WORK

Conclusions

- **Comprehensive management** of the water cycle in large territories allows the development of robust and resilient companies.
- **VIGÍA** will help to detect future diseases on water as a permanent R&D centre.
- **Educational programs** and **sensibilization campaigns** contribute to concern society about the importance of water.



*We firmly believe that **it is time to act** and seek a more sustainable future for the next generations.*





SUSTAINABLE
**WATER &
ENERGY**
SOLUTIONS
NETWORK