


1


Background



- Over the past decade, the Security Council has recognized:
 - The need to empower and support cities, local communities and municipalities in Resolution 2178 (2014)
 - The role of whole of society involvement in Resolution 2354 (2017),
 - The need for consultation across stakeholders in Resolutions 2250 (2015), 2419 (2018) and 2535 (2020), and
 - The strengthening of public and private partnerships in resolution 2396 (2017).

2


CREWS: A Data Analysis Platform to Help Inform Policy-makers



CREWS is a data-informed platform to support state and local level government agencies (including mayors, county executives, and elected leaders) ***prioritize risk and protective factors*** for primary prevention of violence, and to ***align legislation, budgets and programs with local needs*** to build resilient local prevention frameworks

3

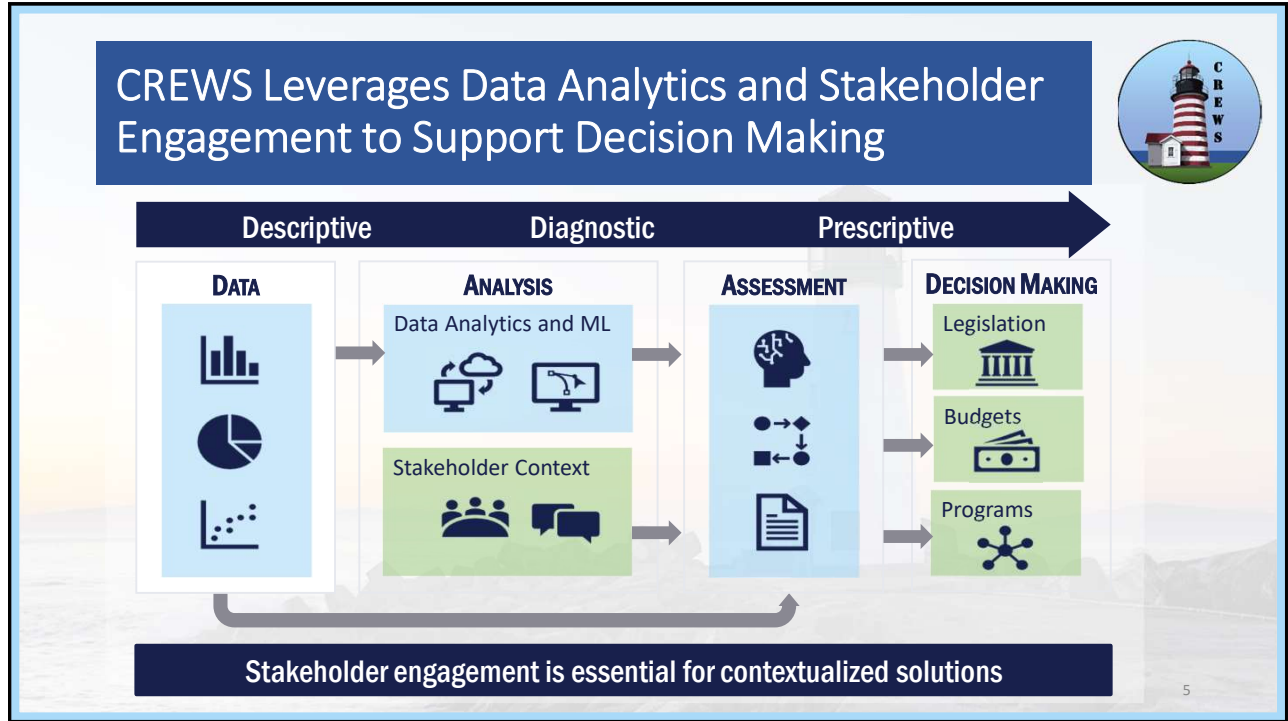
3



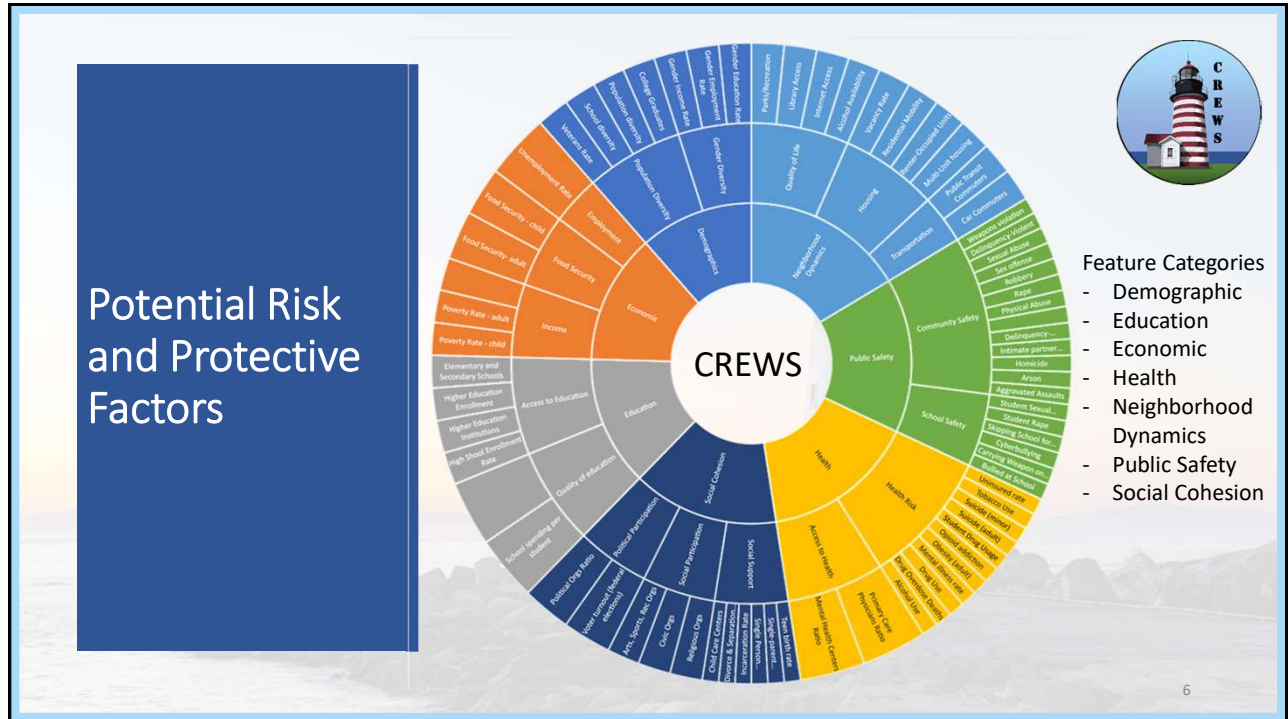
CREWS Methodology

4

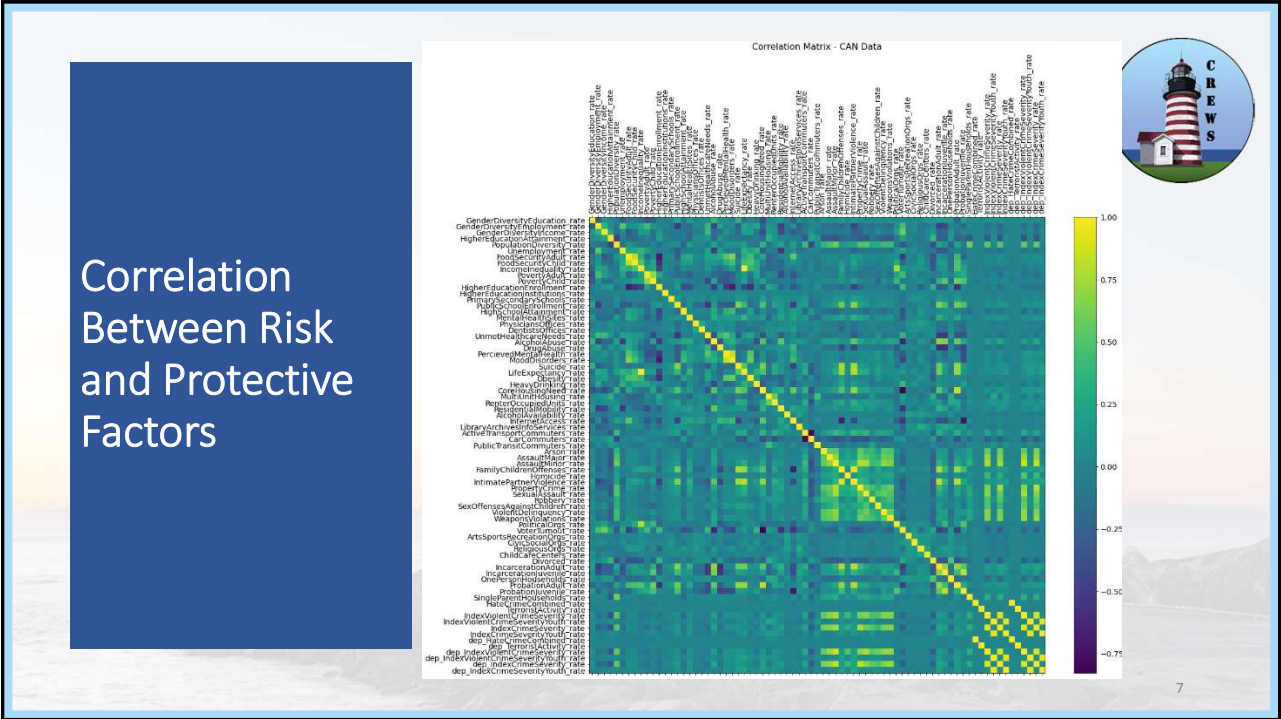
4



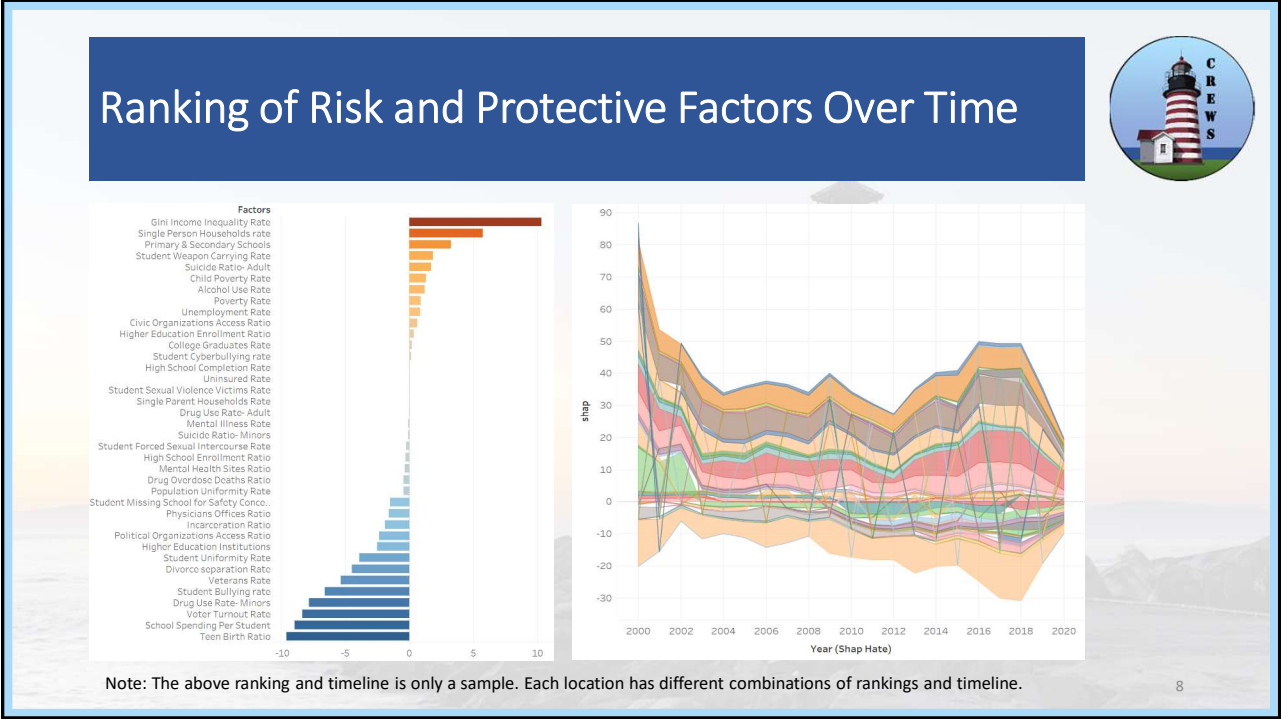
5



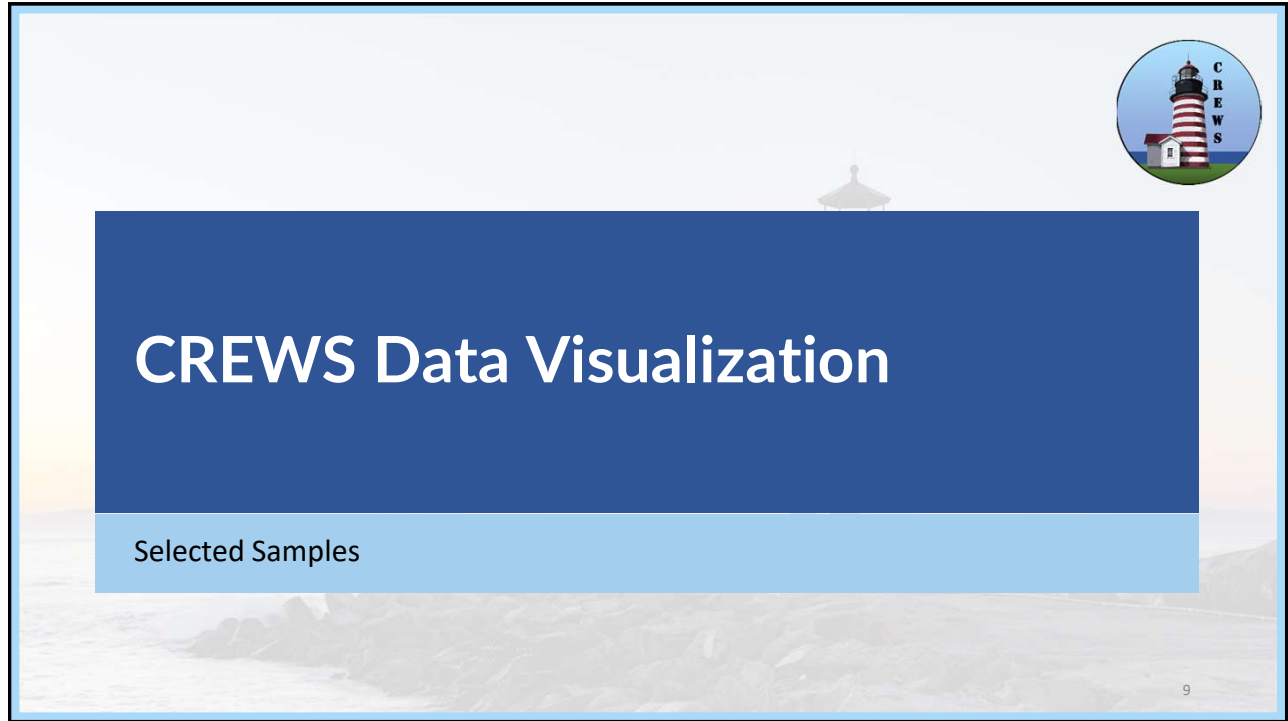
6



7



8

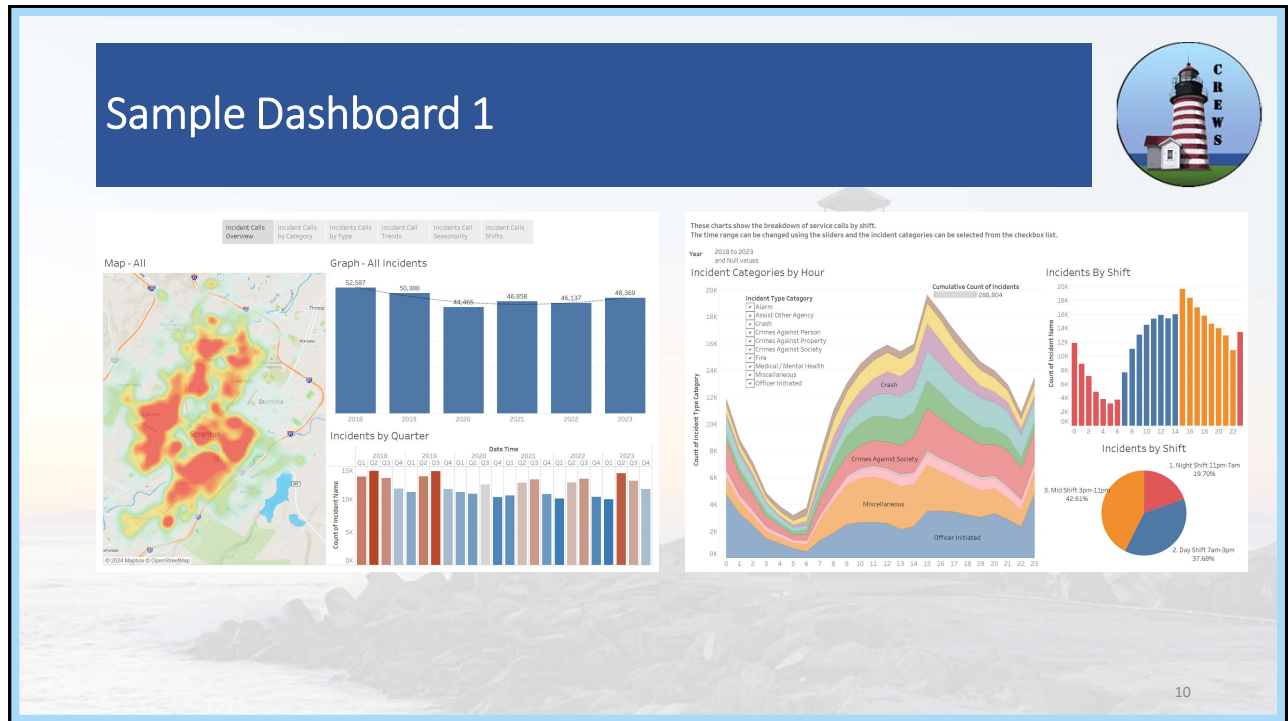


CREWS Data Visualization

Selected Samples

9

9



Sample Dashboard 1

Incident Call Overview | Incident Calls by Category | Incident Calls by Type | Incident Call Trends | Incident Call Seasonality | Incident Calls Shifts

Map - All | Graph - All Incidents | Incidents by Quarter | Incident Categories by Hour | Incidents by Shift

Year: 2018 to 2023 and Real values

Incident Type Category:

- Assault
- Assist Other Agency
- Death
- Crimes Against Person
- Crimes Against Property
- Crimes Against Society
- Fire
- Medical/Mental Health
- Miscellaneous
- Officer Initiated

Cumulative Count of Incidents: 288,804

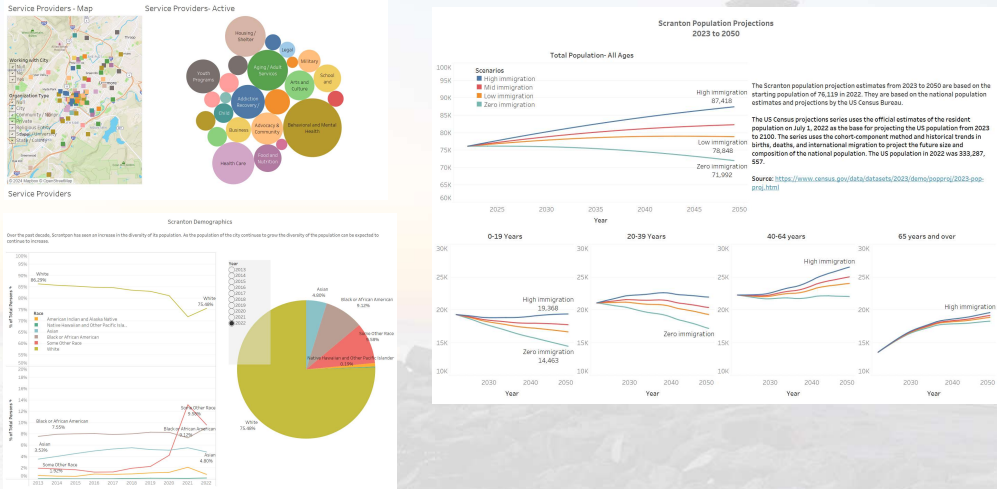
Incidents by Shift:

- 1. Night Shift 11pm-7am: 18.70%
- 2. Day Shift 7am-3pm: 37.48%
- 3. Mid Shift 3pm-11pm: 42.82%

10

10

Sample Dashboard 2



Applications of CREWS



Terrorism Domestic Terrorism/ Ideologically Motivated Violent Extremism (IMVE)

Targeted Violence Mass Shootings
School Gun Incidents

Hate Crimes

Gun Violence Homicide
Suicide

Public Safety Crime Severity Index (adult/youth)
Violent Crime Severity Index (adult/youth)

Key Learnings from CREWS



- Critical need for tailored local strategies aligned with local interests
- The CREWS data-informed process is effective at localization and diverse partner engagement.
- The capacity for data analytics is limited at the local governance level however there is a recognition that a data-informed approach using machine-learning is essential to tackle the challenges of today.

13

13

Thank you!

Humera Khan
President, Muflehun
humera@muflehun.org

www.muflehun.org

14

14