



Empowered lives.  
Resilient nations.



# GEF IW:LEARN

Scaling Up Knowledge Management and  
South-South Cooperation for  
Transboundary Waters Management

# GEF LME:LEARN

A global service provider for LME's  
and their coasts

Dr. Andrew Hudson

Head of Water & Ocean Governance, UNDP

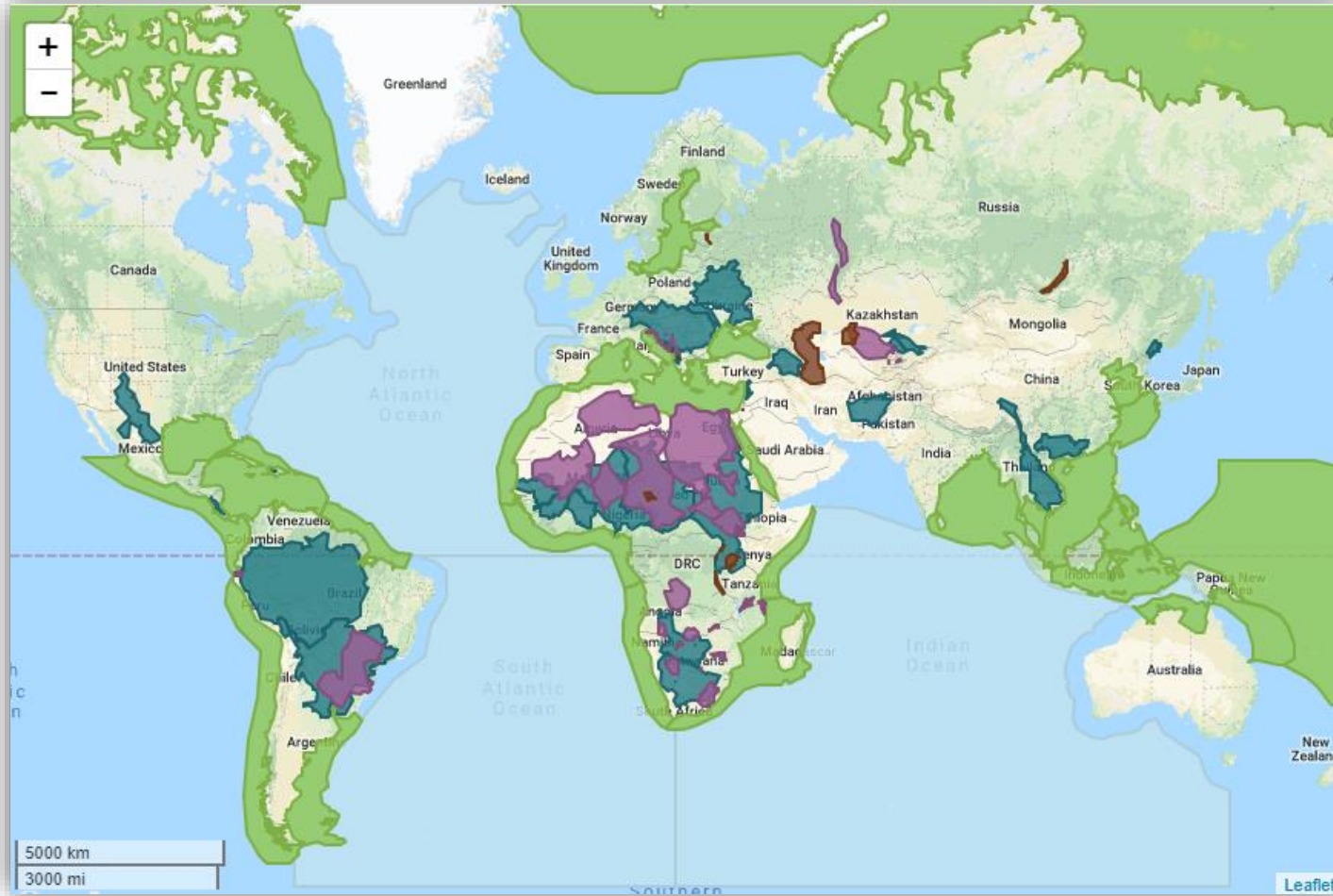
Multi-stakeholder Dialogue / Capacity-building

Partnership Event

24-25 January 2019

New York City

# GEF International Waters Focal Area



## International Waters Projects

- **33 transboundary river basins**
- **10 lakes**
- **7 aquifers**
- **23 Large Marine Ecosystems**



# GEF International Waters: Learning Exchange And Resources Network (IW:LEARN), [www.iwlearn.net](http://www.iwlearn.net)

## Project Objectives:

- **Strengthen** knowledge management capacity
- **Promote** scaled-up learning of disseminated experiences, tools and methodologies
- **Improve** the effectiveness of GEF IW and partner projects

**Implementation period: 2016-2020**

**Budget: USD 4.9M**



# GEF LME:LEARN, [www.iwlearn.net/marine](http://www.iwlearn.net/marine)

## Project Objectives:

- **Improve** global ecosystem-based governance of Large Marine Ecosystems and their coasts
- **Generate** knowledge, build capacity, harness public and private partners
- **Support** south-to-south and north-to-south learning

**Implementation period: 2016-2020**

**Budget: USD 2.5M**



# Global Learning Partnership

## Implementing Agencies



## Executing Agencies



## Project Partners







# Project Outcomes



Empowered lives.  
Resilient nations.



- **Centralized knowledge management for the GEF IW Portfolio & partners**
- **Improved capacity & implementation performance of GEF IW projects and TB waters institutions**
- **GEF IW projects moved from agency or ecosystem silos to increased partnership and cooperation (S2S...)**
- **A global network of practitioners; IW focal area identity; a culture of learning, systematic codification & dissemination of project experience**

# Service Line

## Knowledge Sharing and Partnership Building



International Waters Conference



Regional Training Workshops



Twinning



Global Dialogue Participation

## Information Management



Transboundary Diagnostic Analysis



Strategic Action Programme



Experience Notes



Results Notes



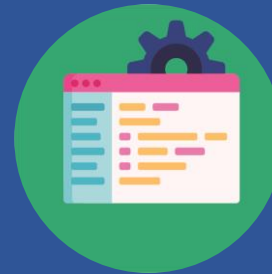
Synthesis Notes



Portfolio Results Archive



Newsletter



Website Toolkit

## Programmatic Support



Visualization Tool



Manuals and E-books



Online thematic courses



Learning Exchange Service Center

# Cross-Cutting Thematic Support



- **Economic Valuation (UNIDO)**
- **Private Sector Engagement (WWF)**
- **Legal and Institutional Frameworks (ICPDR)**
- **Environmental Flows and Sustainable Infrastructure (TNC)**
- **Climatic Change and Variability (UNECE)**
- **Water-Energy-Food Ecosystem Nexus (UNECE)**
- **Benefit Sharing (IUCN)**
- **Conjunctive Management of Freshwater (UNESCO-IHP)**
- **Gender Mainstreaming (UNESCO-WWAP)**
- **Source-to-Sea Action Management (CI)**
- **Ocean Governance (NOAA/ICES)**
- **Marine Spatial Planning and Blue Economy (IOC-UNESCO)**



# GEF Biennial International Waters Conference



## IWC8 2016

📅 9 - 13 May 2016 - Sri Lanka

Eight GEF Biennial International Water Conference



## IWC7 2013

📅 26 - 21 October 2013 - Barbados

7th GEF Biennial International Water Conference



## IWSC 2012

📅 24 - 26 September 2012 - Bangkok

Setting the International Waters Science Agenda for the next Decade



## IWC6 2011

📅 17 - 20 October 2011 - Croatia

6th Biennial International Waters Conference



## IWC5 2009

📅 26-29 October - Cairns, Australia

The 5th Biennial GEF International Waters Conference



## IWC4-2007

📅 31 July - 3 August 2007 - Cape Town, SA

GEF's 4th Biennial International Waters Conference

Results



9 IWC's

2553 attendees

80% of IWC attendees report new partnerships established

[www.iwlearn.net/iwc](http://www.iwlearn.net/iwc)

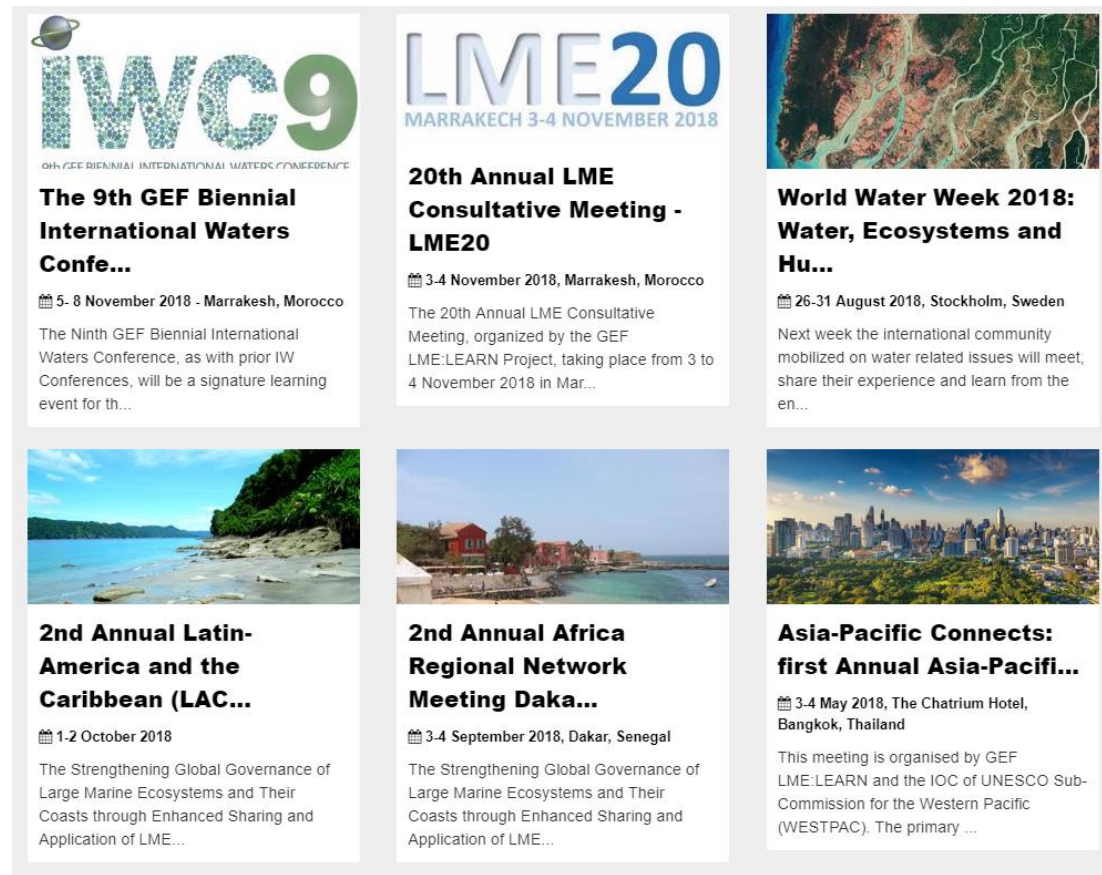
# North-South and South-South Learning in the GEF IW Portfolio

- Training and Experience Sharing at the Regional Level
- Latin America-Caribbean, Africa, Asia-Pacific, Eastern Europe and Central Asia

Results



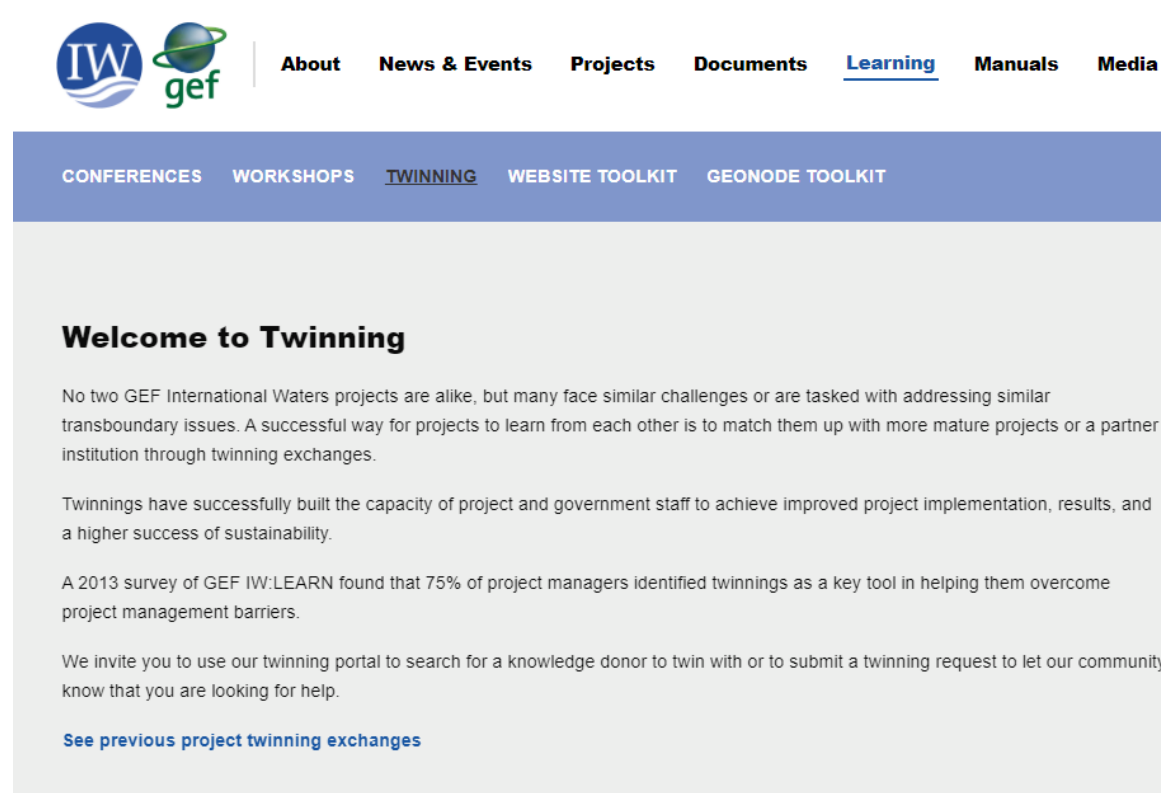
32 Regional Targeted Workshops  
885 beneficiaries  
129 GEF IW projects served





# Project Twinning & Inter-Project Collaboration Opportunities

Exchanges between projects on a more programmatic and long-term basis



Results



34 Project Twinnings  
247 Beneficiaries  
61 GEF IW projects

[www.iwlearn.net/twinning](http://www.iwlearn.net/twinning)



# Project Website/Portfolio Content Management System



## Results



4245 knowledge products

265 GEF project profiles

1883 partner contacts

77.4% of projects use the website in their daily work

[www.iwlearn.net](http://www.iwlearn.net)

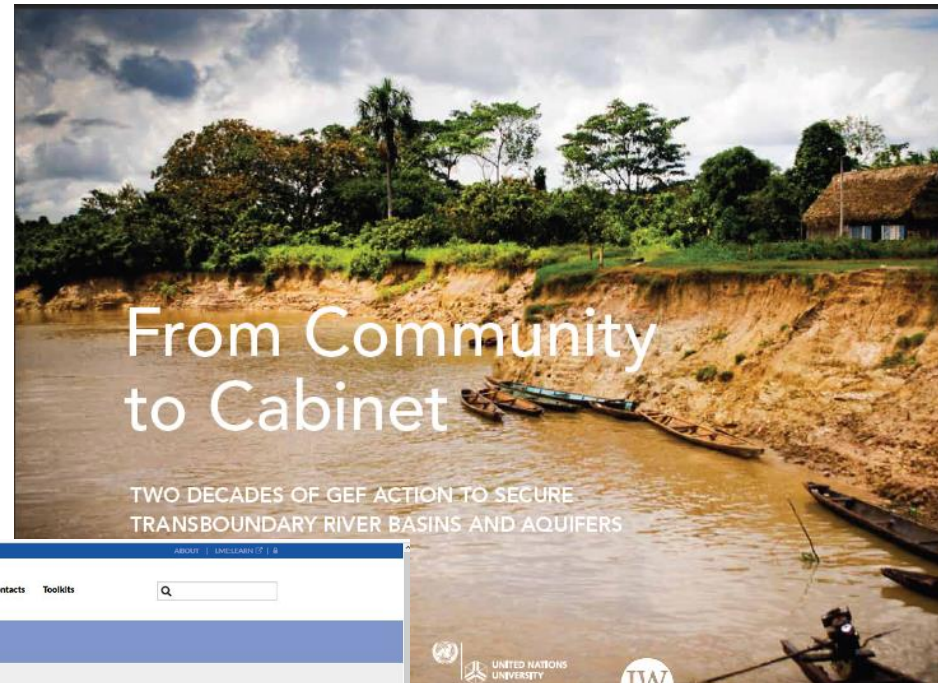
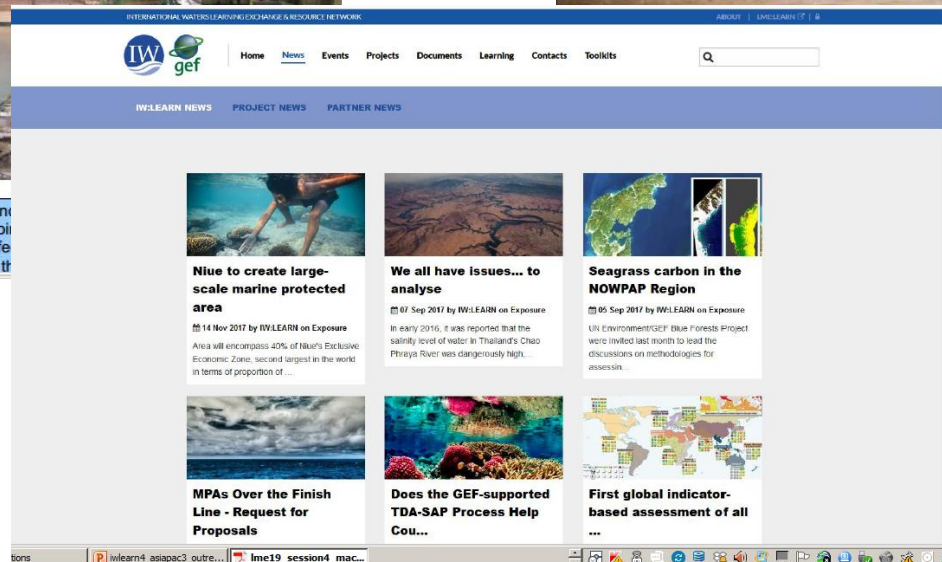
# Information Dissemination & Synthesis



## Building Successful Technological and Financial Partnerships with the Private Sector to Reduce Pollutant Loading



**Abstract:** The Danube TEST project was designed and implemented to demonstrate that sound technologies would not only aid in reducing pollutant loading from industrial enterprises that adopted them in being more cost-effective, but also increase the capacities in Danubian countries to provide many of the



## Results



1692 newsletter subscribers

105 IW Results Notes

34 IW Experience Notes

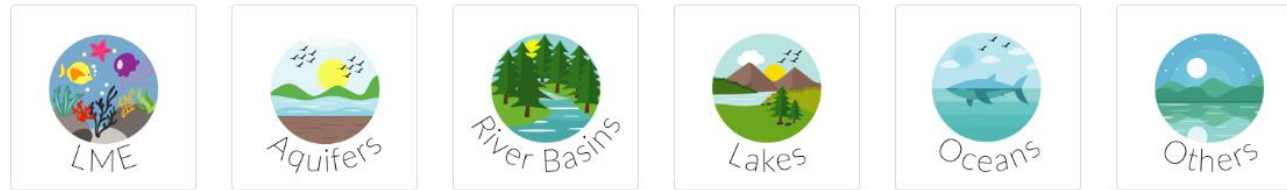
54 newsletters

[www.iwlearn.net/news](http://www.iwlearn.net/news) & [www.iwlearn.net/experience](http://www.iwlearn.net/experience)

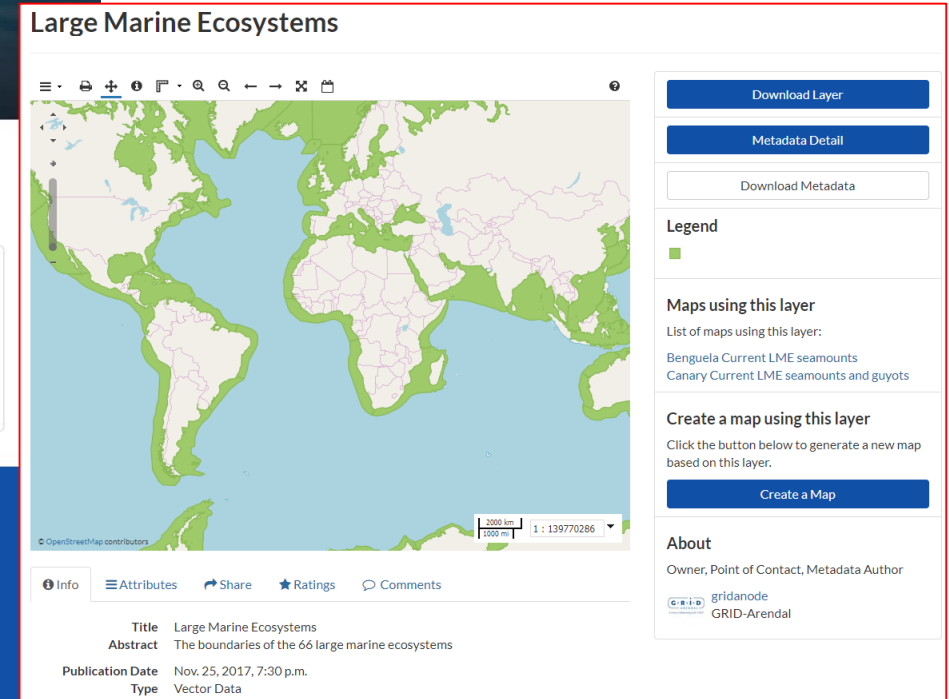
# GeoNode Spatial Data Visualization Platform

## Welcome to IW:LEARN Spatial Lab

### Discover The IW:LEARN Spatial Datasets



### Search for Data.

[Advanced Search](#)

Results  180 project and transboundary water basin datasets

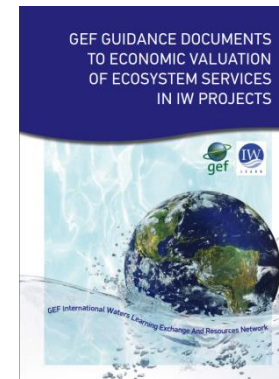
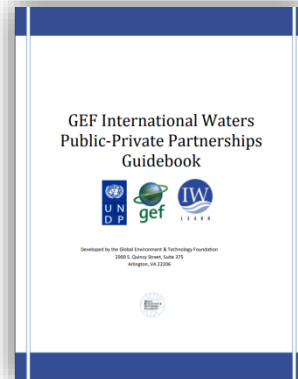
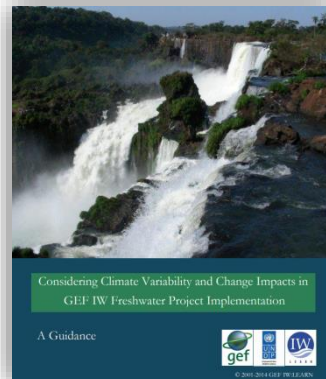
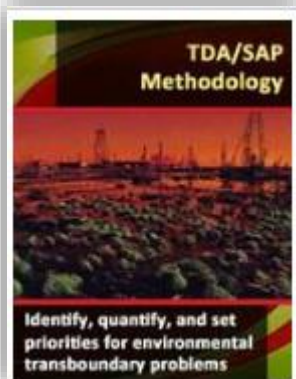
[geonode.iwlearn.org](http://geonode.iwlearn.org)



# Large Marine Ecosystem Hub



# Guidance Manuals/Toolkits



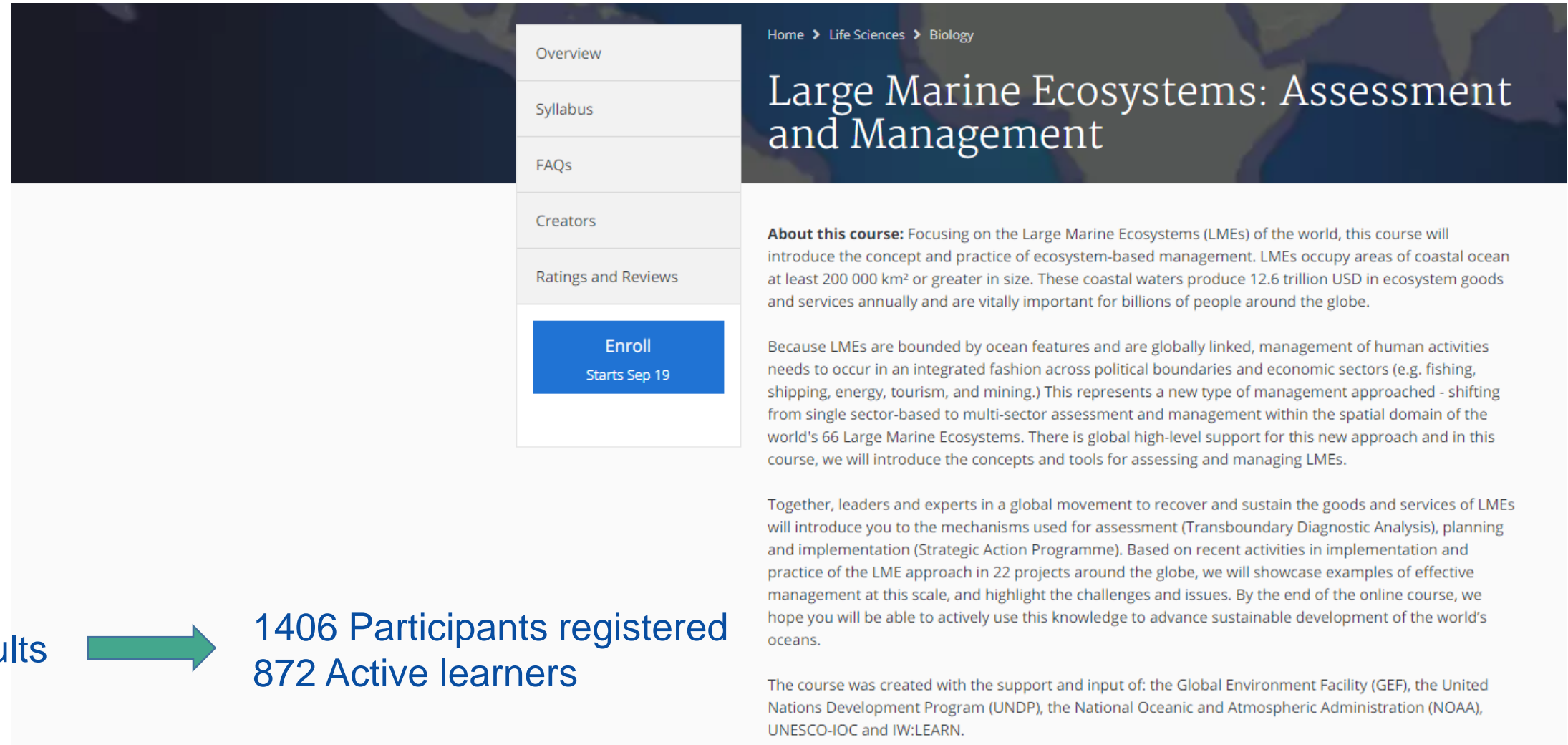
Results



13 Thematic Manuals/Toolkits  
400+ documents in the library

[www.iwlearn.net/manuals](http://www.iwlearn.net/manuals)

# Large Marine Ecosystem Massive Online Open Course



The screenshot shows the course page for 'Large Marine Ecosystems: Assessment and Management' on Coursera. The page has a dark blue header with a world map background. On the left, there is a sidebar menu with links: Overview, Syllabus, FAQs, Creators, Ratings and Reviews, and a blue 'Enroll Starts Sep 19' button. The main content area has a breadcrumb trail 'Home > Life Sciences > Biology' and the course title 'Large Marine Ecosystems: Assessment and Management'. Below the title, there is a paragraph about the course, a paragraph about LMEs, a paragraph about the course's focus, and a paragraph about the course's support.

Home > Life Sciences > Biology

## Large Marine Ecosystems: Assessment and Management

**About this course:** Focusing on the Large Marine Ecosystems (LMEs) of the world, this course will introduce the concept and practice of ecosystem-based management. LMEs occupy areas of coastal ocean at least 200 000 km<sup>2</sup> or greater in size. These coastal waters produce 12.6 trillion USD in ecosystem goods and services annually and are vitally important for billions of people around the globe.

Because LMEs are bounded by ocean features and are globally linked, management of human activities needs to occur in an integrated fashion across political boundaries and economic sectors (e.g. fishing, shipping, energy, tourism, and mining.) This represents a new type of management approached - shifting from single sector-based to multi-sector assessment and management within the spatial domain of the world's 66 Large Marine Ecosystems. There is global high-level support for this new approach and in this course, we will introduce the concepts and tools for assessing and managing LMEs.

Together, leaders and experts in a global movement to recover and sustain the goods and services of LMEs will introduce you to the mechanisms used for assessment (Transboundary Diagnostic Analysis), planning and implementation (Strategic Action Programme). Based on recent activities in implementation and practice of the LME approach in 22 projects around the globe, we will showcase examples of effective management at this scale, and highlight the challenges and issues. By the end of the online course, we hope you will be able to actively use this knowledge to advance sustainable development of the world's oceans.

The course was created with the support and input of: the Global Environment Facility (GEF), the United Nations Development Program (UNDP), the National Oceanic and Atmospheric Administration (NOAA), UNESCO-IOC and IW:LEARN.

Results → 1406 Participants registered  
872 Active learners

<https://www.coursera.org/learn/large-marine-ecosystems>



# Regional Networks

**Networks of professionals and practitioners involved in marine and coastal initiatives**

## Latin America-Caribbean



## Africa



## Asia-Pacific



Results →

Latin America-Caribbean: 46 members (collective reach across 26 coastal countries)  
Africa: 70 members (collective reach across 35 coastal countries)  
Asia-Pacific: 56 members (collective reach across 40 coastal countries)

<https://iwlearn.net/marine/services/regional-networking>

# Thank You



For more information on the projects please contact

Mish Hamid

Project Manager

[mish@iwlearn.org](mailto:mish@iwlearn.org)

[www.iwlearn.net](http://www.iwlearn.net)