

# AFICS ANNUAL ASSEMBLY 2019

*New York, 29 May 2019*

Janice Dunn Lee, Acting Chief Executive Officer  
UNJSPF

EPPO FAO IAEA ICGEB ICCROM ICAO ICC IFAD ILO IMO IOM IPU  
ISA ITU ITLOS STL UN UNESCO UNIDO WHO WIPO WMO WTO

- I. Introduction
- II. General Assembly and Pension Board
- III. Overview of Fund
- IV. Status of Benefit Processing
- V. Conclusions



### **Acting CEO Priorities**

- Smooth effective operations
- Enhanced communications
- Strengthened management culture



### Highlights of GA Resolutions

- CTBTO Membership
- Annual budgeting
- Split role of CEO

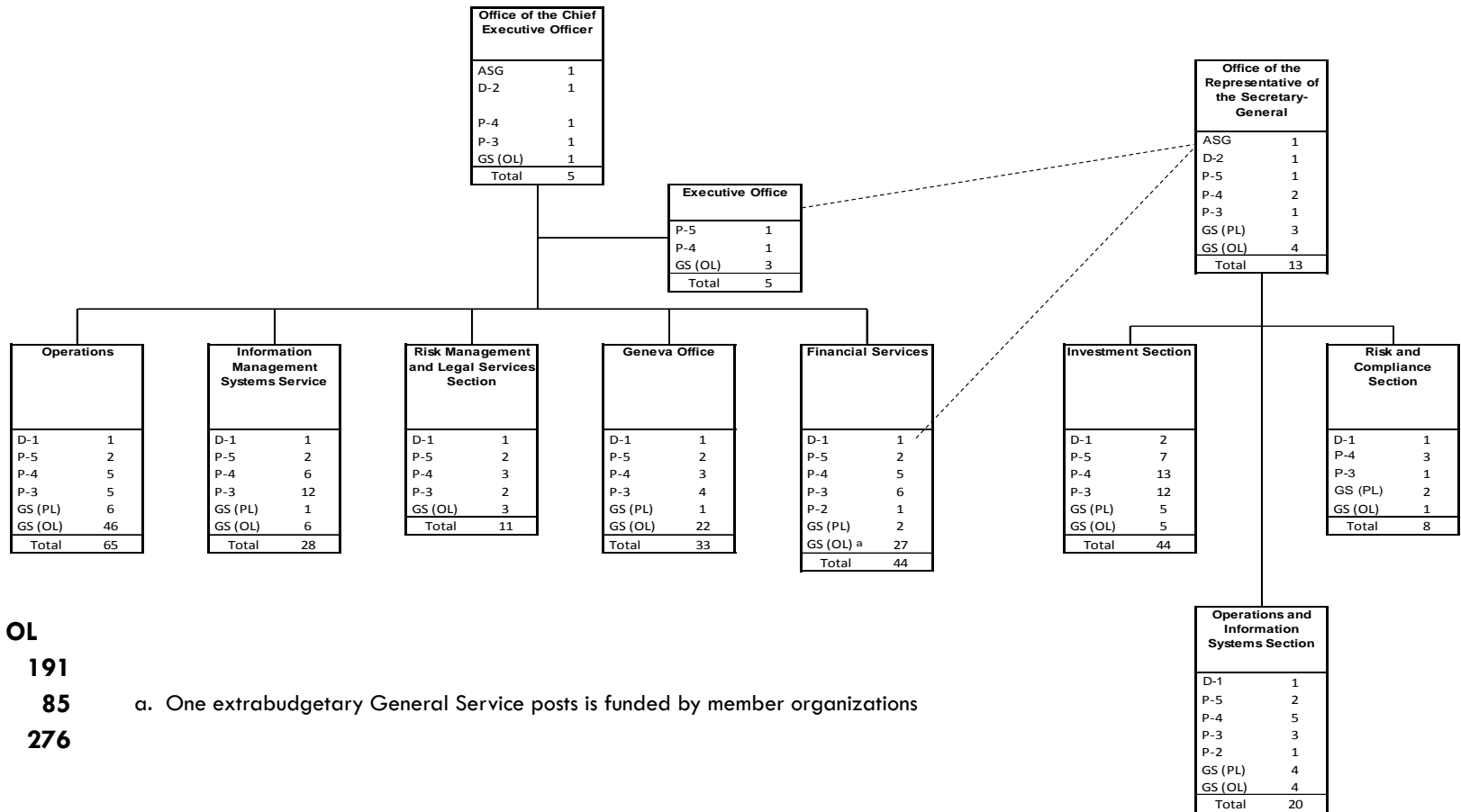


### Pension Board Items

- Governance Working Group
- 66<sup>th</sup> Session
- Agenda items



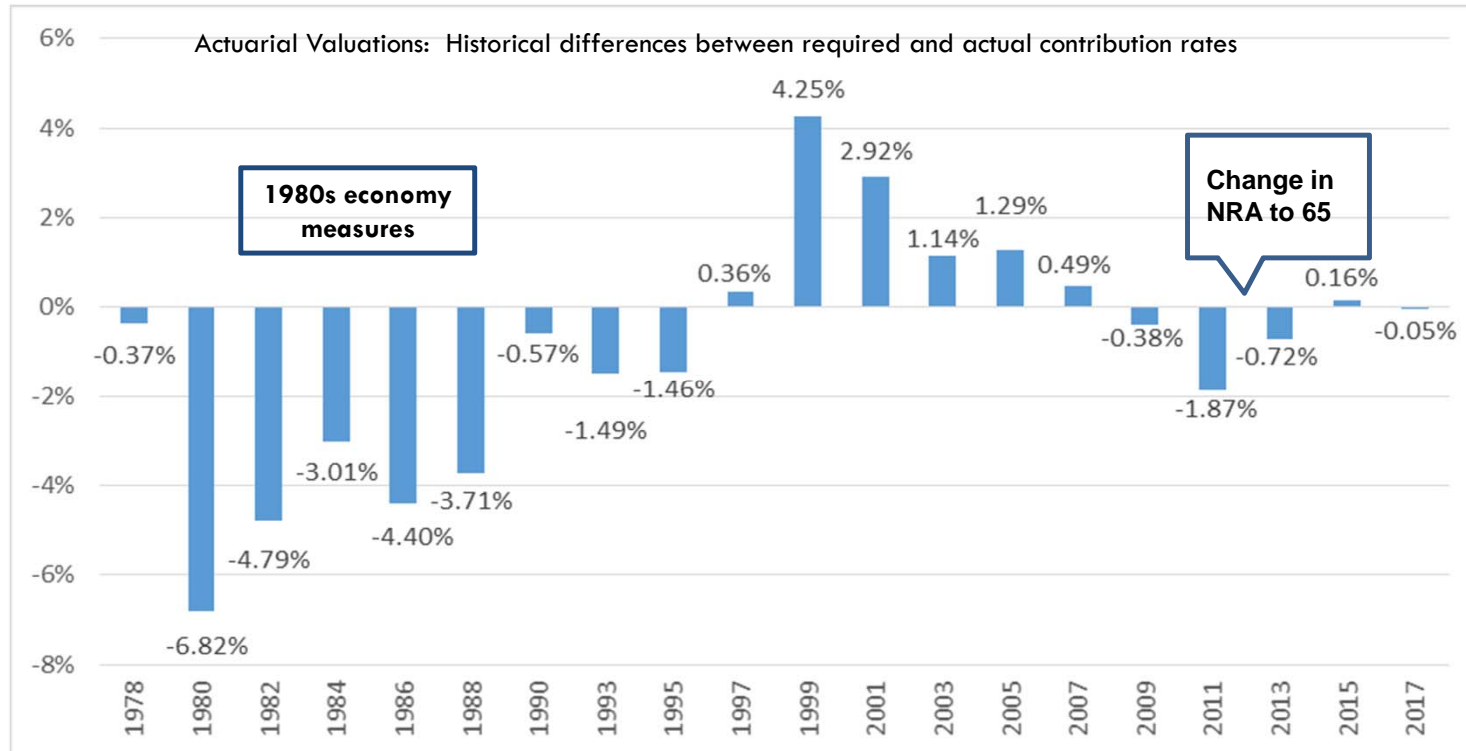
United Nations Joint Staff Pension Fund: Approved organization chart for the biennium 2018-2019



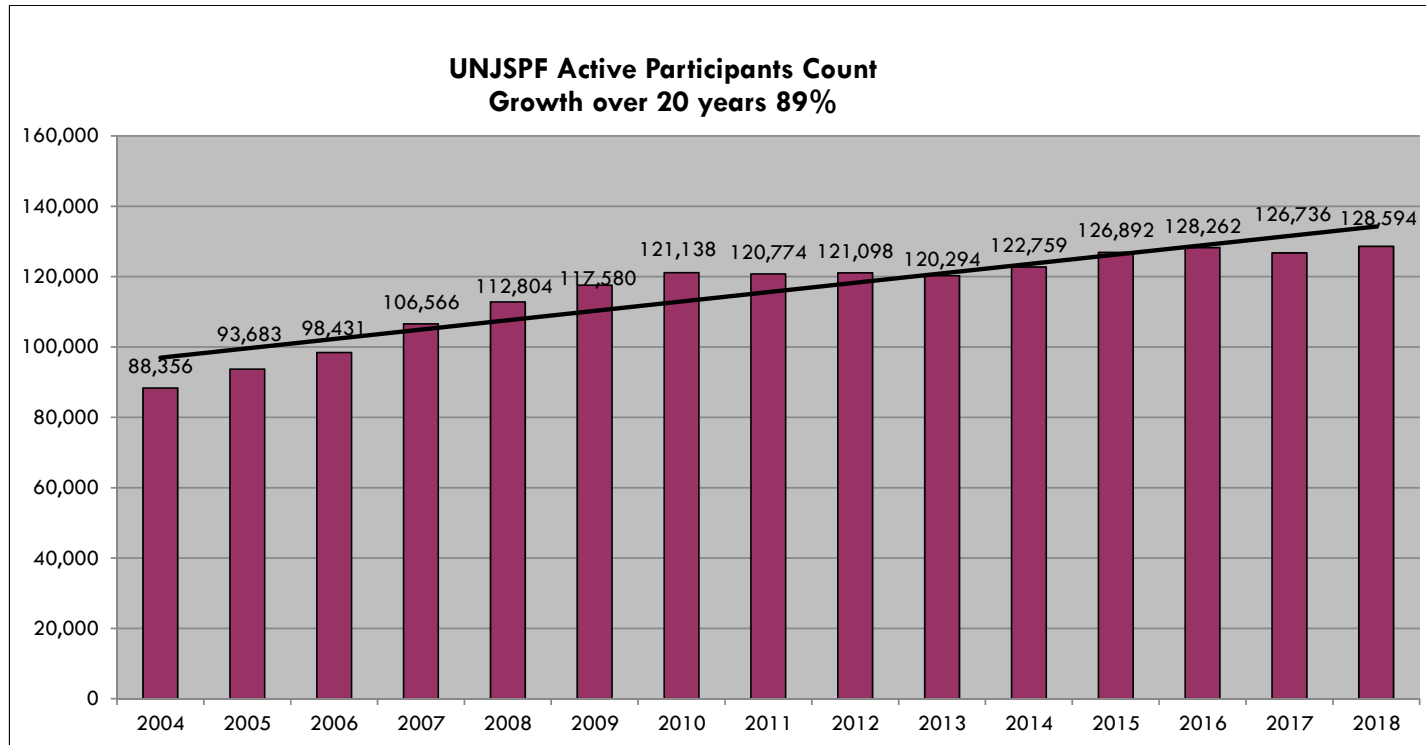
**Including XB 1 OL**

<b>FS</b>	<b>191</b>
<b>OIM</b>	<b>85</b>
<b>Total</b>	<b>276</b>

a. One extrabudgetary General Service posts is funded by member organizations



- As of 31 December 2017: small deficit of 0.05 per cent of pensionable remuneration
- **Fund is financially sound.**

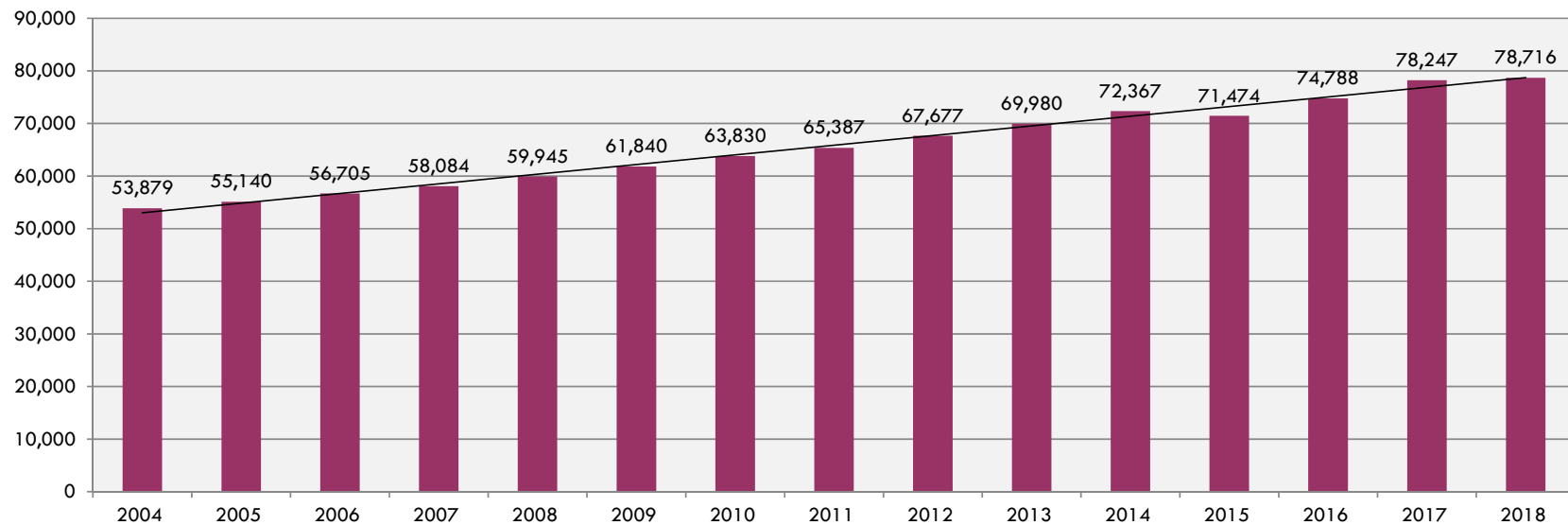


- **Active participants as of 31 Dec 2018: 128,594**
- **Annual incoming contributions from active participants and member organizations: US\$ 2.5 billion (2018)**

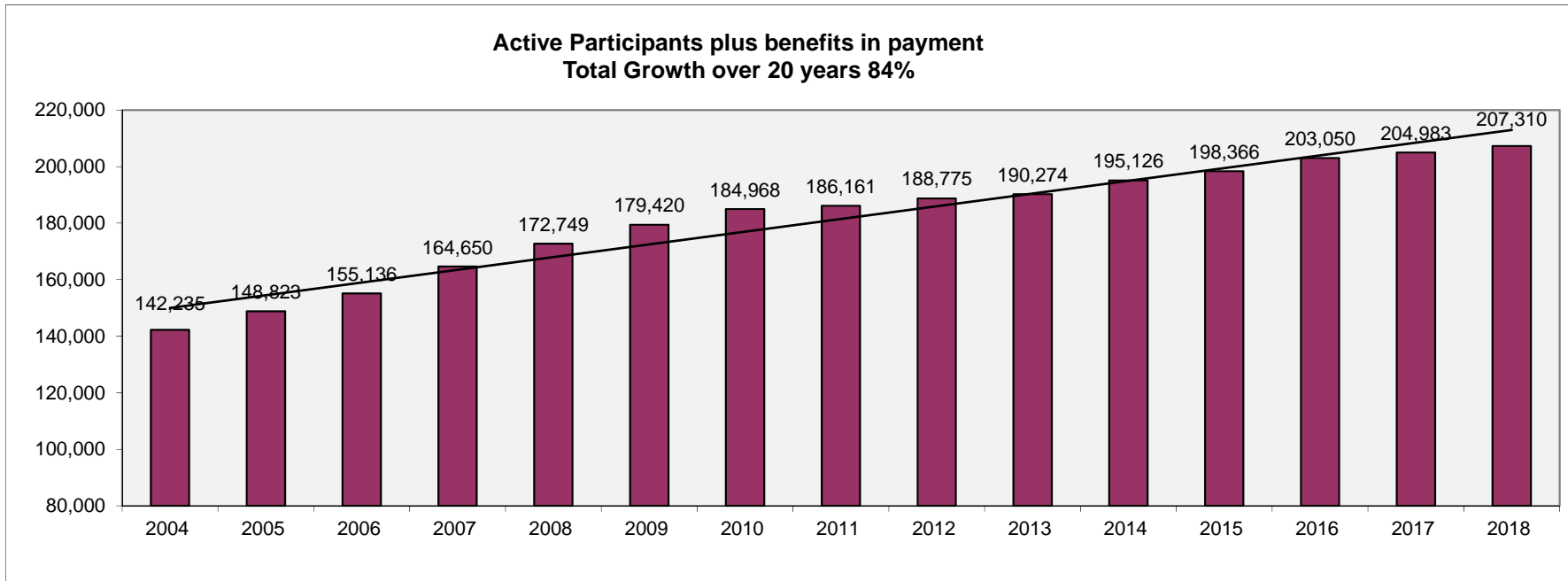




**UNJSPF Number of Periodic Benefits in Payment**  
**Growth over 20 years 76%**



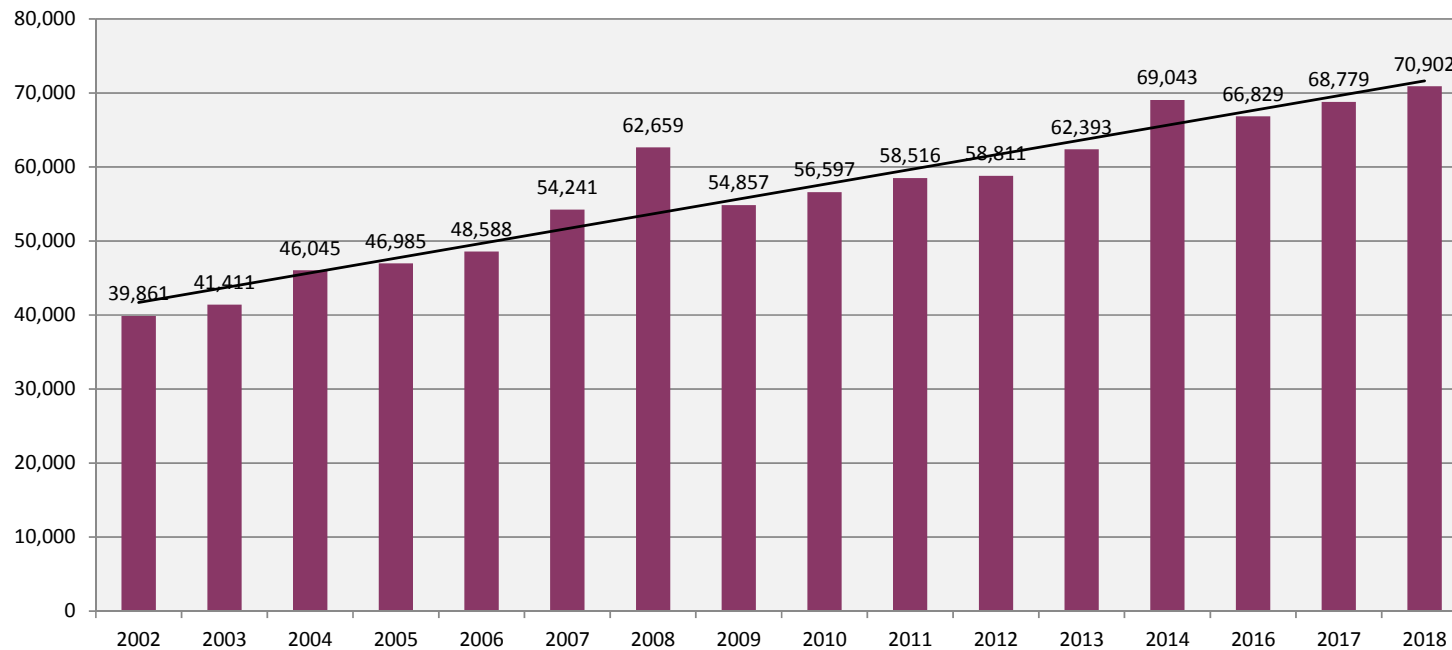
- **Periodic benefits in payment as of 31 Dec 2018: 78,716**
- **Annual benefits paid out: US\$ 2.7 billion (2018)**



- **Total number of individuals being serviced as of 31 Dec 2018: 207,310**
- **Maturing Fund:** greater payouts and increasing Client Servicing needs, including more third party relationships;



Total Certificates of Entitlement mailed per year (includes follow-up mailings)

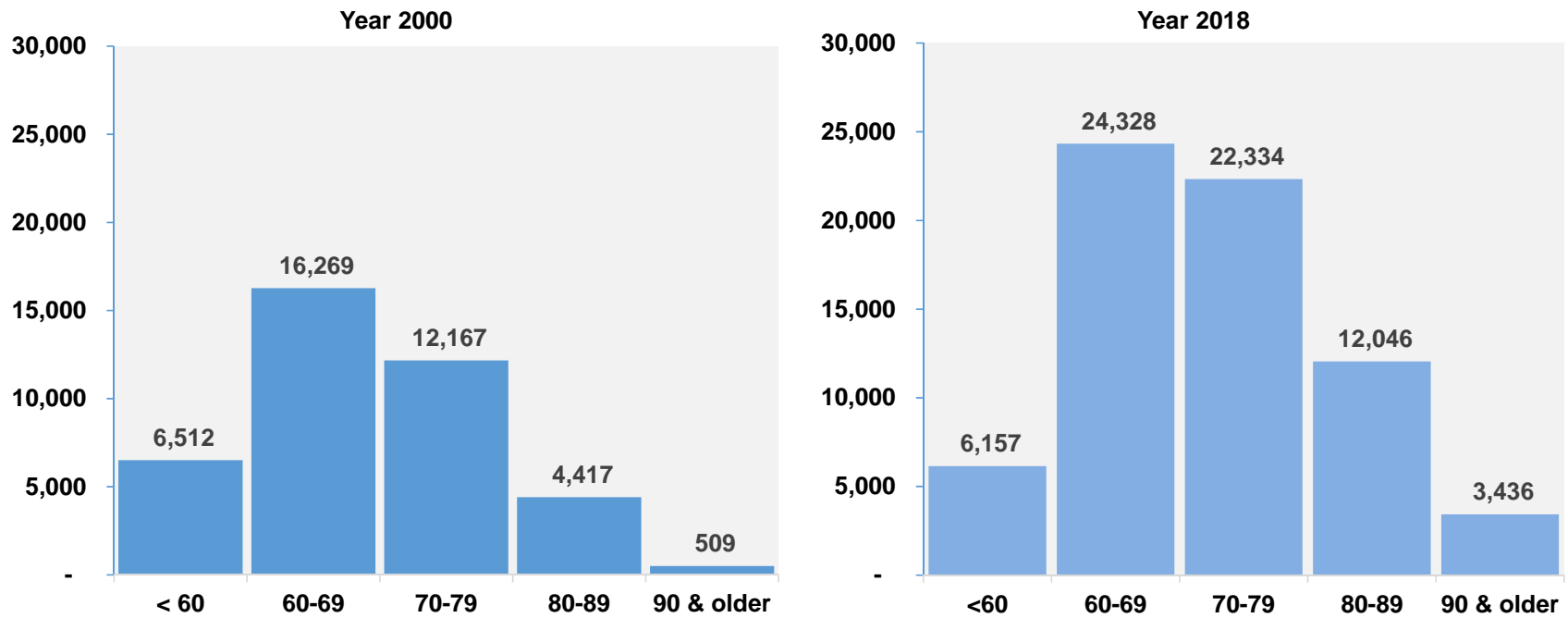


\*2015 no CEs were sent out due to change in cycle and transition to IPAS

- Fund sent 70,902 CEs in 2018
- CEs for 2019 expected to be dispatched shortly.



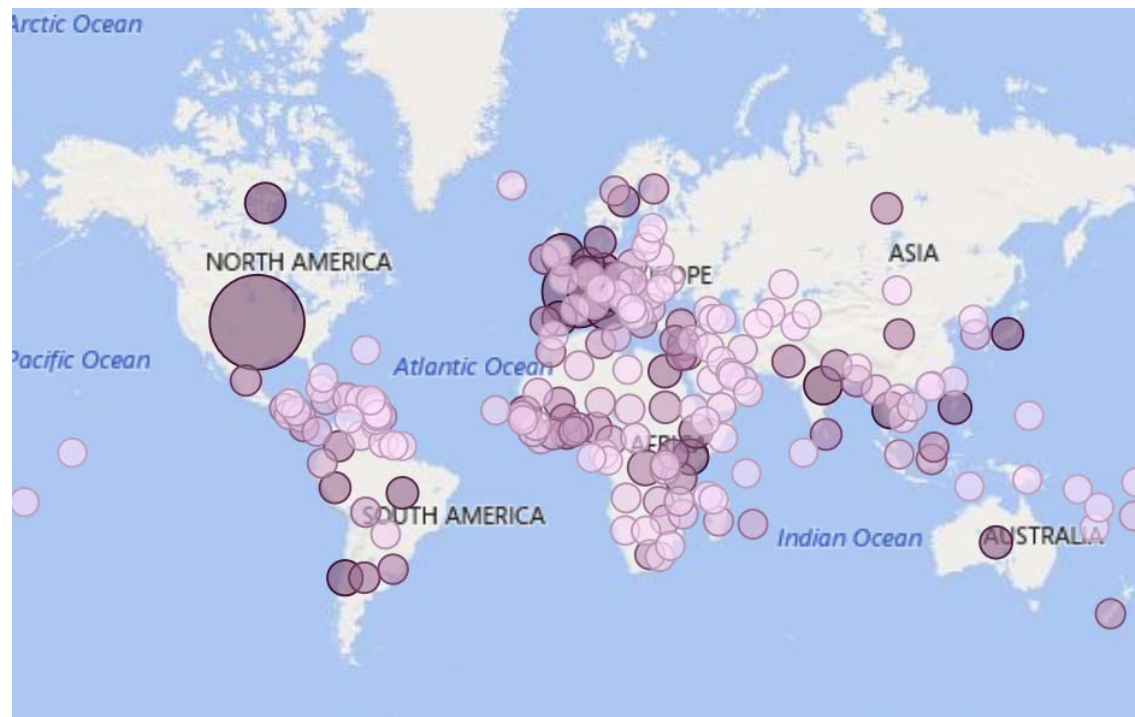
### Aging of retirees and other beneficiaries



➤ Nearly a 7-fold increase in retirees and other beneficiaries aged 90 and older since 2000



### UNJSPF Periodic Benefits by Country



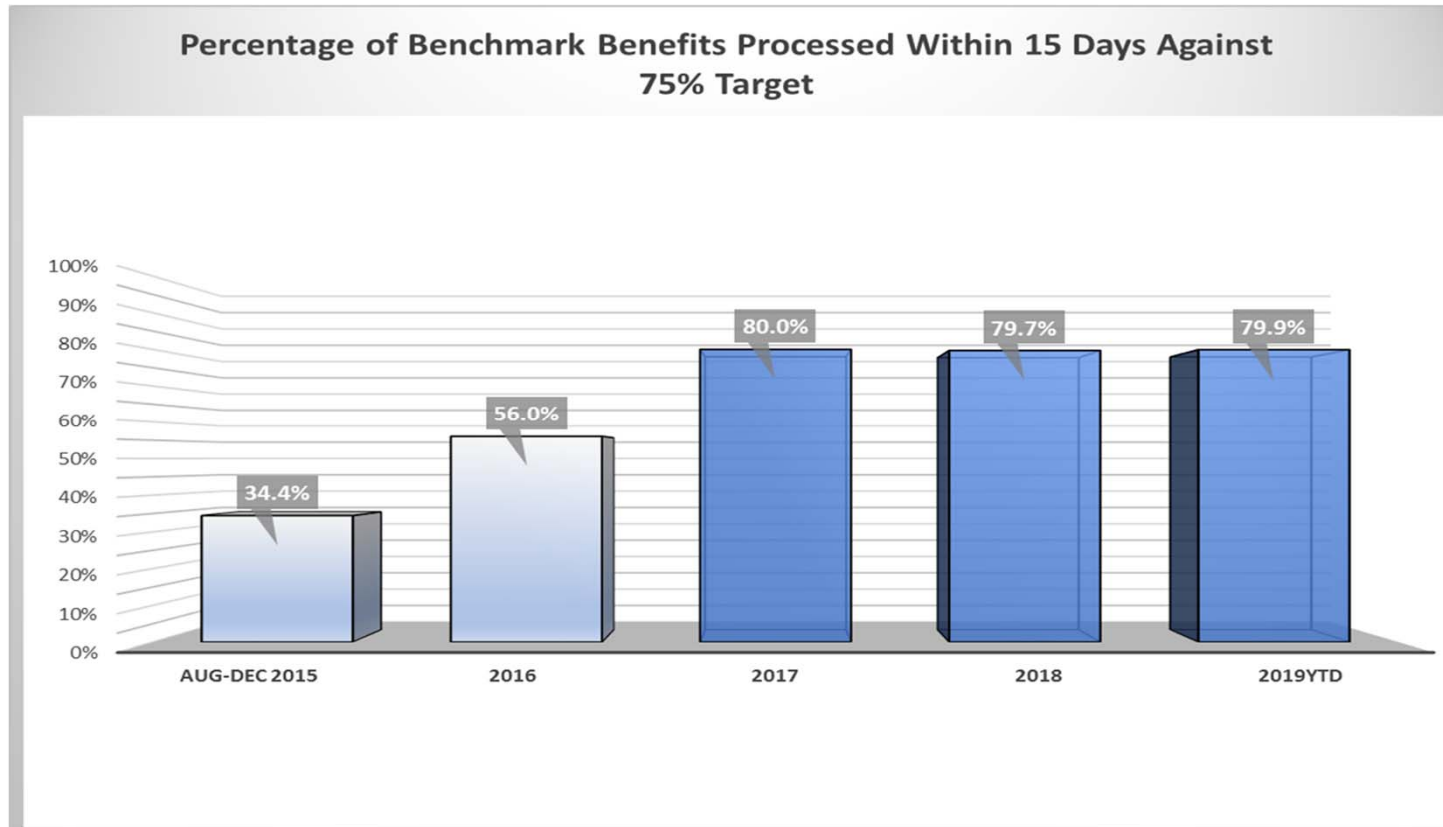
*For map representation, a darker and larger circle means a greater number.*

- Fund manages an overall increasing geographical dispersion of retirees and other beneficiaries. 13



### Operations

- Pension Entitlements Sections (PES)
- Client Services & Outreach (CS)
- Increasing number of benefits to process
- Higher administrative costs



➤ Improved processing rates

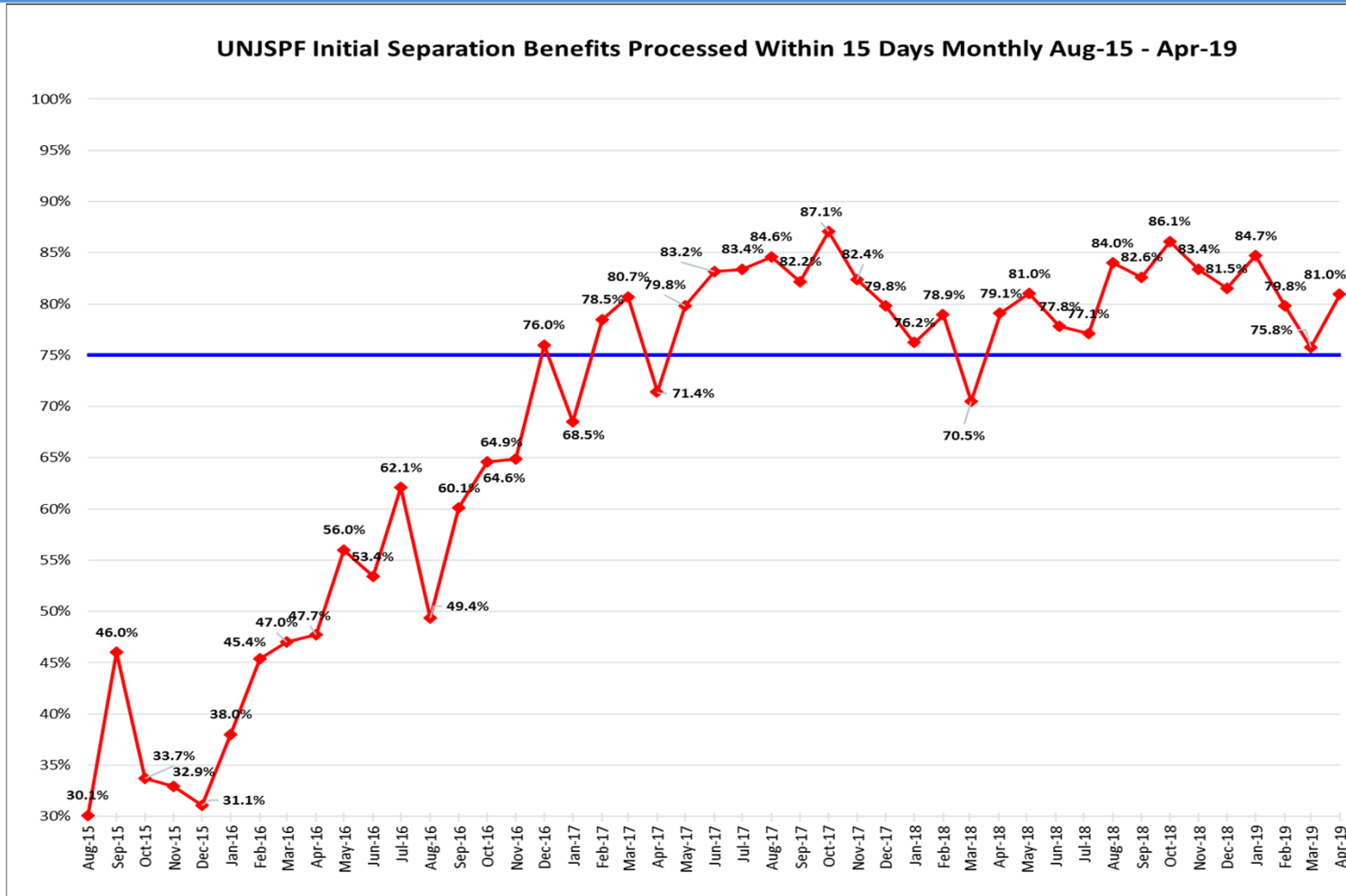


### CURRENT INVENTORY OF OPEN WORKFLOW CASES (MARCH 2019)

1 March 2019

<b>Total inventory of Separation Workflows in IPAS</b>		<b>17,242</b>
<b>Minus</b>	<b>Non-Processable Workflows</b>	
	Workflows identified as open due to issues in IPAS	<b>(2,537)</b>
	Workflows identified as pending due to non-receipt of documents	<b>(8,174)</b>
<b>Presumed Processable (Actionable) cases</b>		<b>6,531</b>
<b>Minus</b>		
	Cases identified as not at all for Payment	<b>(331)</b>
	Re-entry into participation, Transfers, etc.	
	Art 30 Deferred Retirement Benefit	<b>(488)</b>
	Art 32 Deferment of benefit election/choice	<b>(3,633)</b>
	Cases identified as not yet for payment	
	Cases with issues or requiring additional information	<b>(750)</b>
	Cases not ready for Payment	
	Cases under processing	
	Calculation/audit/release stage	<b>(549)</b>
<b>Balance of Presumed Processable (Actionable) cases still to be reviewed</b>		<b>780</b>







Finally, Fund’s aim is to ensure its retirees and other beneficiaries are able to fully enjoy their retirement, **secure in knowing that their benefits will be paid accurately and on time.**

But please recall, that the **Fund is obligated to interrupt your peace once a year** to deliver an annual “certificate of entitlement” (CE) that must be signed and returned to the Fund.

**CEs will be sent to you shortly!**





### If You Need Assistance:

#### UNJSPF - NEW YORK

1 Dag Hammarskjöld Plaza,  
885 2<sup>nd</sup> Avenue & 48<sup>th</sup> Street, 4<sup>th</sup> Floor

Tel: 1-212-963-6931

US toll free: 1-833-668-6931

Fax: 1-212-963-3146

Web: <http://www.unjspf.org>

Visiting hours 9:00am – 5:00pm

Monday through Friday (except Thursdays)

Walk-in, no appointment needed.

# Questions?

