



**GLOBAL ENVIRONMENT FACILITY**  
INVESTING IN OUR PLANET

## Climate Finance Support to Least Developed Countries

Roundtable for African LDCs, Haiti And Yemen  
Virtual, 30 November 2022



Bolivia





PRESENTATION  
AGENDA

**What is the GEF?**

**GEF's Strategy for Climate  
change adaptation and  
Mitigation**

**Project and Program Cycle**

**Questions and answers**

# A GLOBAL PARTNERSHIP

Largest environmental multi-donor trust fund in the world

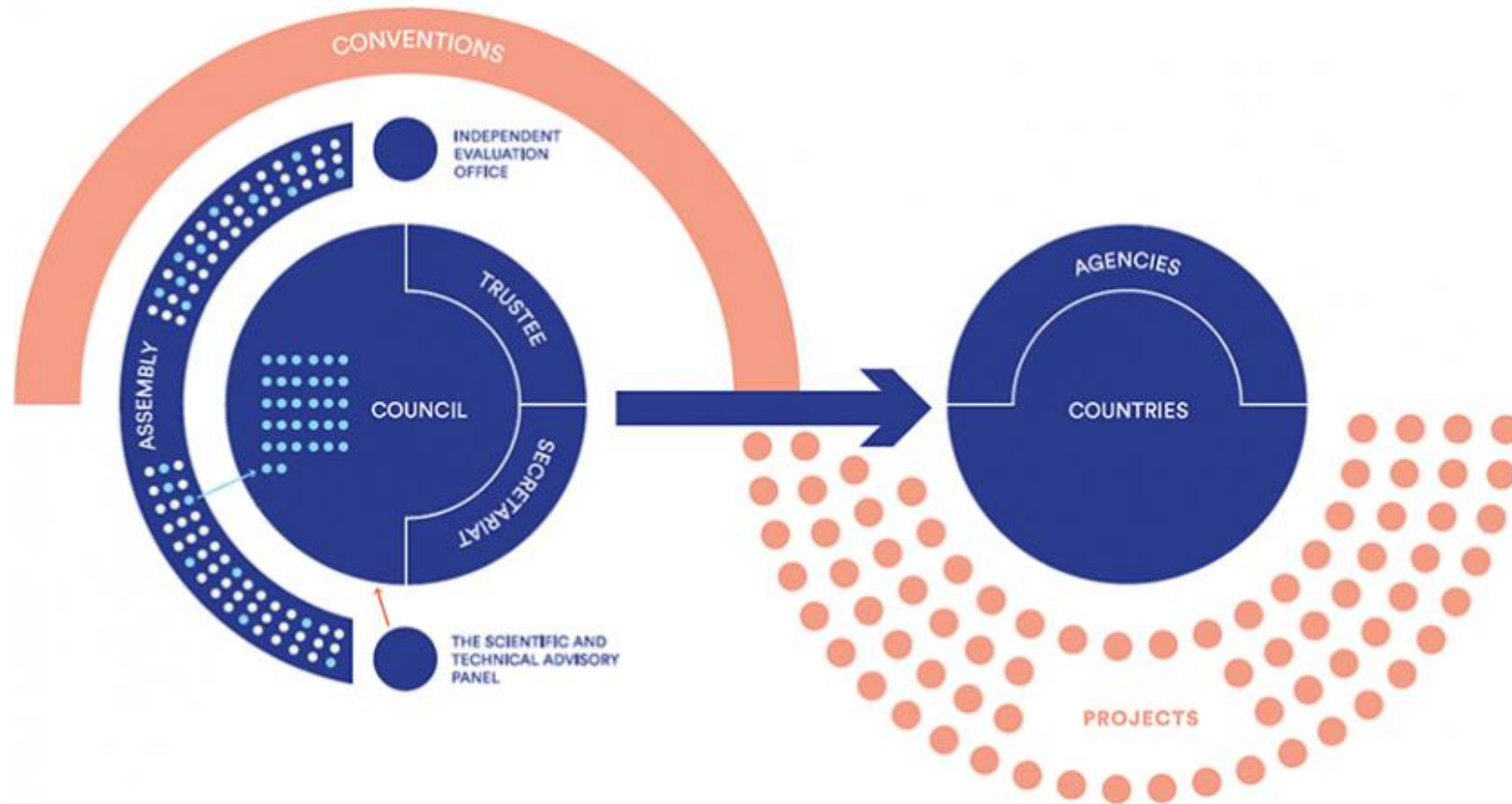
Financial mechanism of five international environmental conventions



## 18 IMPLEMENTING AGENCIES



# Organization





# GEF MANAGED CLIMATE FUNDS

## Adapting to climate change

**Least Developed Countries Fund (LDCF)**



**Established by COP7  
in 2001**

**Special climate Change Fund (SCCF)**



## Climate Change Mitigation

**Allocation for Climate Change Focal Area**



**Capacity Building Initiative for Transparency (CBIT)**



**Established by  
COP21 in 2015**





## Least Developed Countries Fund

Supporting climate Adaptation in LDCs



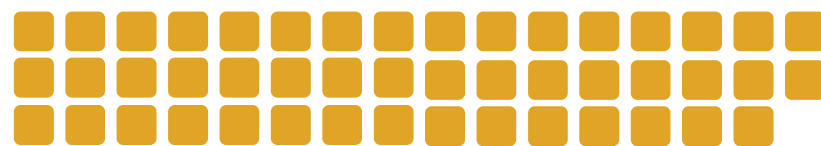


# LDCF Support (July 2018-June 2022)

**87**  
projects

**\$523.4**  
million

**All 47 LDCs**  
**supported**



**Utilization rate** for LDCF resources for national projects in the GEF-7 period

**99.2%**



Nature-based Solutions



Climate-Resilient Agriculture and Value Chains



Climate Risk Insurance and Guarantee



Knowledge Exchange and Institutional Capacity



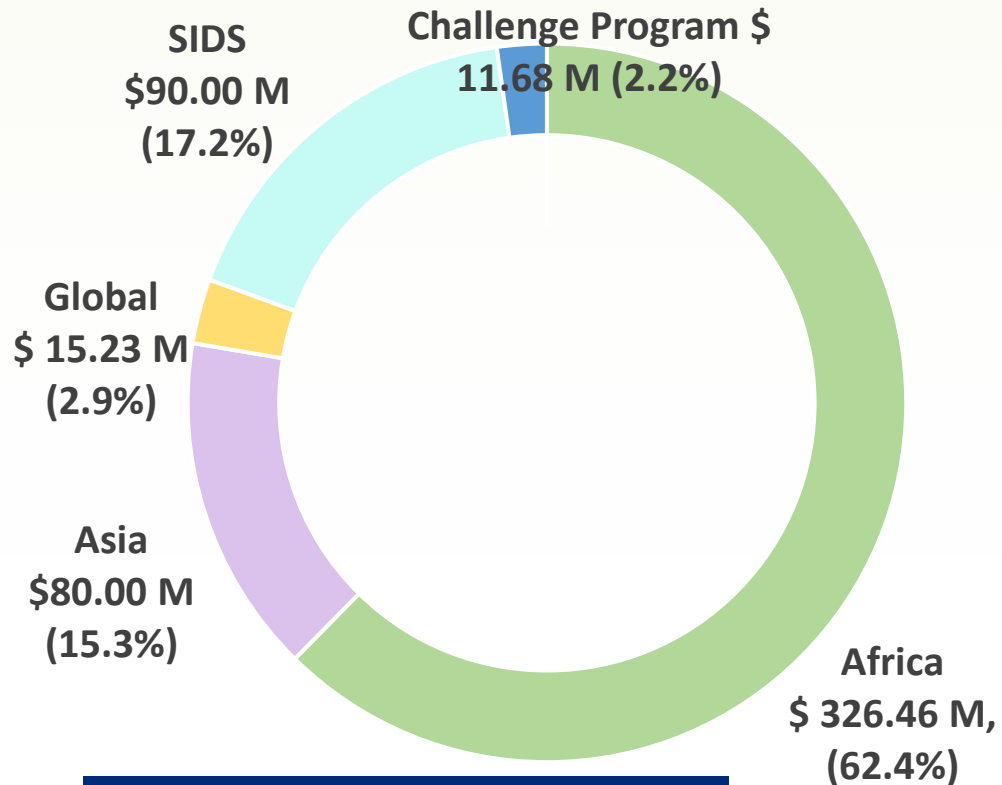
Coastal resilience



Access to IDA, leverage finance

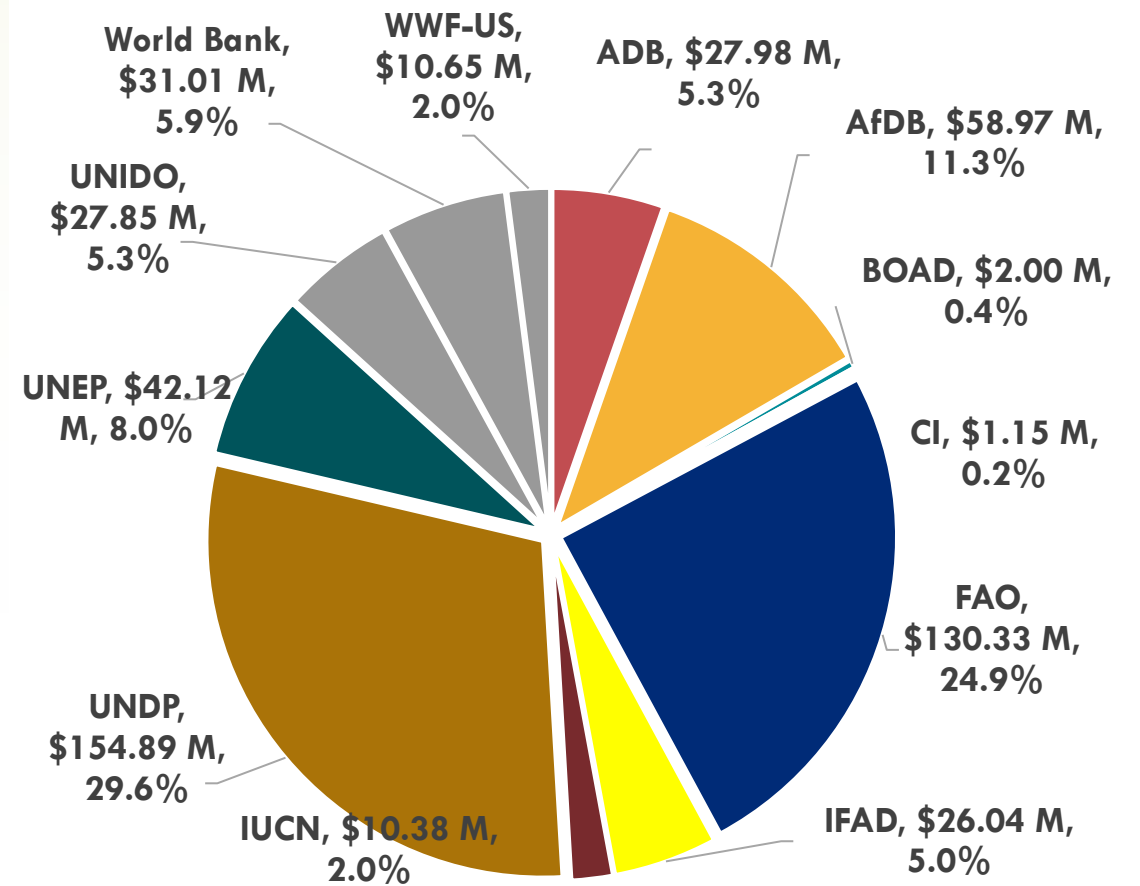
# LDCF Support (July 2018-June 2022)

## Regional Distribution



Haiti: \$ 33.48 million  
Yemen: \$ 26.53 million

## Agency Distribution







# Least Developed Countries Fund (LDCF) Special Climate Change Fund (SCCF)

Programming Strategy and  
Operational Improvements (2022-2026)



# LDCF/SCCF Priority themes for 2022-2026



## **Agriculture, food security and health**

*Heightened focus on community wellbeing*

1



## **Water**

*Continued support to capture, store, conserve and enable easier and more reliable access to water*

2



## **Early warning and climate information systems**

*Expand access and strive for greater user uptake*

3



## **Nature-based solutions**

*High potential to deliver adaptation*

4



# LDCF Financing Scenarios

**FLOOR**

**SCENARIO A**  
Total: \$1 billion

**SCENARIO B**  
Total: \$1.3 billion

*Initial Cap per Country  
(46 LDCs at \$20 million  
initial cap per country)*

**\$920M**



|  |       |        |
|--|-------|--------|
| Reserve to go beyond initial cap for national projects |       | \$193M |
| Challenge Program for Adaptation Innovation            | \$30M | \$40M  |
| Regional and global projects and initiatives           | \$33M | \$130M |

- Dedicated programs \$8M
- Administrative expenses \$9M

# OUTREACH AND CAPACITY SUPPORT FOR LDCF AND SIDS PLANNING AND PROGRAMMING

■ **Support countries to  
strive for higher ambition**

■ **Ensure all LDCs have  
opportunity to access  
LDCF**

## Regional/sub-regional programming and strategy workshops and technical clinics

*Help advance LDCF/SCCF programming, including to  
on how to strengthen design of projects for enhanced  
climate adaptation impact and enable access*

### PROGRESS MADE



*Consultations with  
LDC Group*



*Presentation and inputs received  
at LDC Ministerial meeting in  
Senegal (September 2022)*



# GEF TF Resources

## 4-year

replenishment cycle  
from July 1, 2022  
to June 30, 2026

## \$5.33 billion

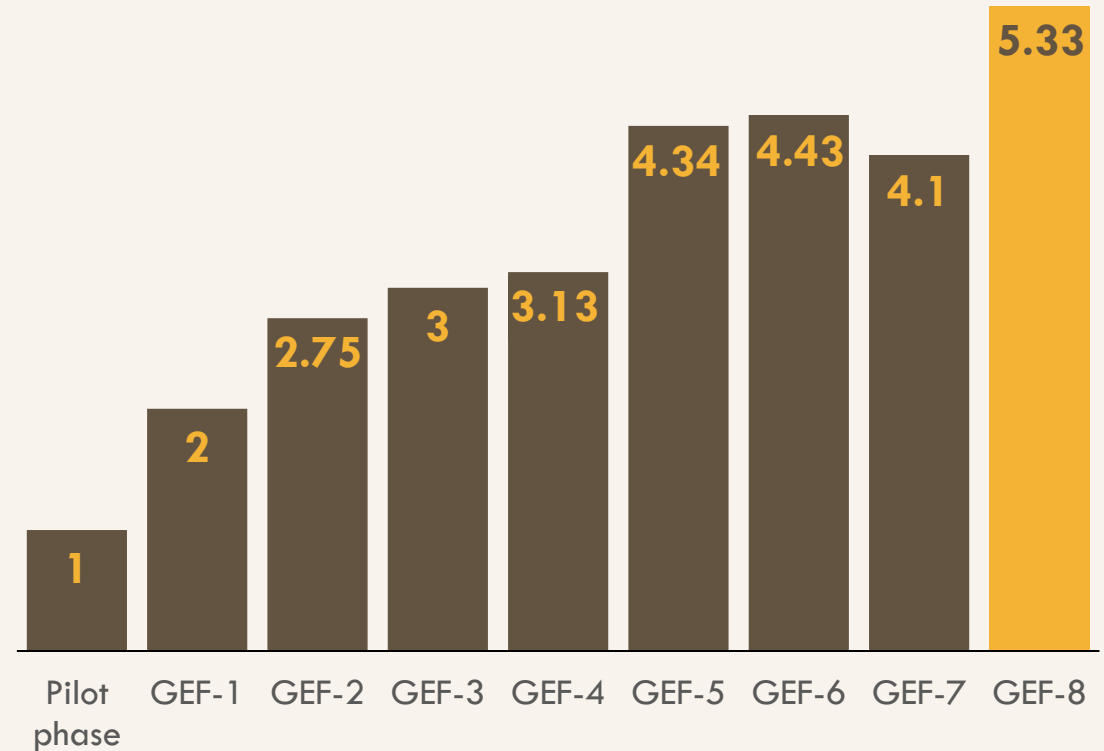
pledged by  
39 donor nations

## Country 'STAR'

allocation levels  
released July 1, 2022

GEF-8 strategy responds to  
conventions and takes **an  
integrated approach to  
systems transformation**

## GEF Replenishment Cycles (billion USD)



# GEF-8 Resource Allocation

Total  
**US\$ 5,330 M**

## Focal Area Amounts

US\$ Millions

|  | <b>BD</b>    | <b>CCM</b> | <b>LD</b>  | <b>IW</b>  | <b>CW</b>  | <b>TOTAL</b> |
|--|--------------|------------|------------|------------|------------|--------------|
| STAR Focal Area Totals to Countries (STAR + Incentive) | 1 453        | 524        | 458        |            |            | 2435         |
| Non-STAR Focal Area Contributions                      | 466          | 328        | 161        |            |            | 955          |
| <b>TOTAL</b>   | <b>1,919</b> | <b>852</b> | <b>618</b> | <b>565</b> | <b>800</b> | <b>4,755</b> |

## Minimum Allocation Floors for LDCs/SIDS

US\$ Millions


|              | <b>BD</b> | <b>CCM</b> | <b>LD</b> | <b>IW</b> | <b>CW</b> | <b>TOTAL</b> |
|--------------|-----------|------------|-----------|-----------|-----------|--------------|
| <b>TOTAL</b> | <b>4</b>  | <b>2</b>   | <b>2</b>  |           |           | <b>8</b>     |





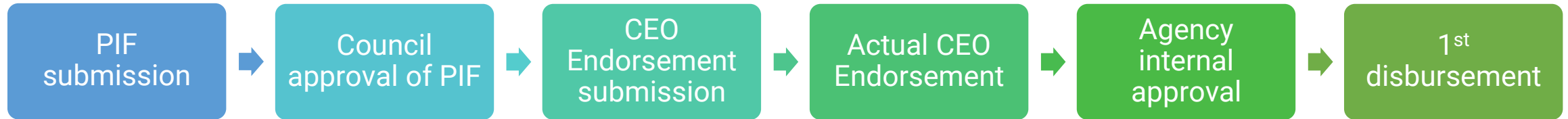
GREEN  
CLIMATE  
FUND

# Long-Term Vision on Complementarity, Coherence, and Collaboration Progress

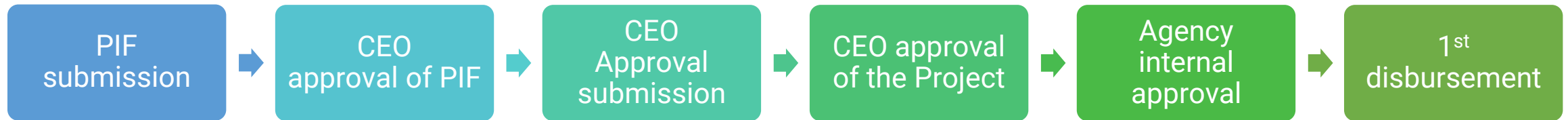
 At COP27: launched joint investment planning for 5 countries with Taskforce for  
Climate Finance Access  
(3 are LDCs: Bangladesh, Rwanda and Uganda)

# GEF Project development cycle

## Full-sized Project GEF project financing > US\$ 2 million



## Medium-sized Project (2-step) GEF project financing ≤ US\$ 2 million



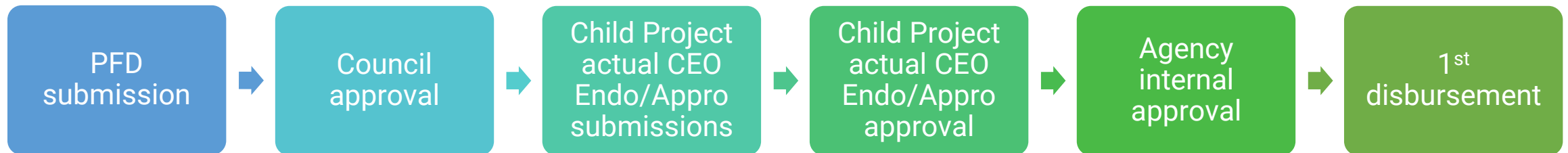


# GEF Project development cycle

**Enabling Activity** GEF financing for preparing a plan, strategy or report to fulfill commitments under a Convention



**Program** A longer term and strategic arrangement of individual but interlinked projects that aim at achieving large-scale impacts on the global environment





**GLOBAL ENVIRONMENT FACILITY**  
INVESTING IN OUR PLANET

**Thank you**