

GLOBAL PROTECTION FORUM 2022



Up next...



**GLOBAL PROTECTION FORUM
2022 - THEMATIC SEGMENT**

**25 OCT 2022
15:30 to 17:00 CEST**

Securing Access for Coordinated
Protection in South Kordofan, Sudan



GLOBAL PROTECTION FORUM 2022



Securing Access for Coordinated Protection in South Kordofan, Sudan

*Human Security Unit (HSU), International
Organization for Migration (IOM), World Health
Organization (WHO) and UN Mine Action Service
(UNMAS)*

Tuesday 25th October, 15.30 - 17.00 CEST



Explosive Ordnance Risk Education session, South Kordofan, 2020 - Photo by JASMAR



INTERPRETATION

This room will have translation enabled for **Spanish, French** and **Arabic** speakers

Esta sala tendrá habilitada la traducción para los hablantes de **español, francés y árabe**

Cette salle sera équipée de traduction pour les orateurs **espagnols, français et arabes**

يوجد ترجمة باللغات العربية و الانجليزية و الفرنسية و ايضا الاسبانية



AGREEMENTS

Whenever possible, keep your camera on

Please stay muted, unless intentionally joining the conversation

Active participation using interactive tools is encouraged

Reach out to the technical team for any questions on interpretation or other IT issues

Please note that this session is being recorded



PANEL

- **Christelle Loupforest**, Deputy Global Coordinator of the MA Area of Responsibility
- **Nina Pronin**, Human Security Unit, Programme Management Officer
- **Enas Oman**, International Organization for Migration (IOM), Programme Officer IOM
- **Sediq Rashid**, UN Mine Action Service (UNMAS), Chief of Mine Action Programme
- **Sofía López**, UN Mine Action Service (UNMAS), Associate Programme Officer



AGENDA

Welcome and Introduction

Access for protection

Using mine action as a gateway for protection

The UN Trust Fund for Human Security (UNTFHS) Programme in Sudan

Remaining access challenges

Closing Remarks



ACCESS FOR PROTECTION

- Protection Cluster operations report that only between **25% and 50%** of affected populations can be reached by protection actors.
- **Humanitarian access** is defined as both people's ability to reach aid and aid's ability to reach people.
- Access is the foundation and the precondition for an effective and principled emergency response.
- Humanitarian access that drives protection dividends is one that enables the full range of protection programmes and services to be delivered by local and international actors and that enables sustained protection presence in communities impacted by crisis.

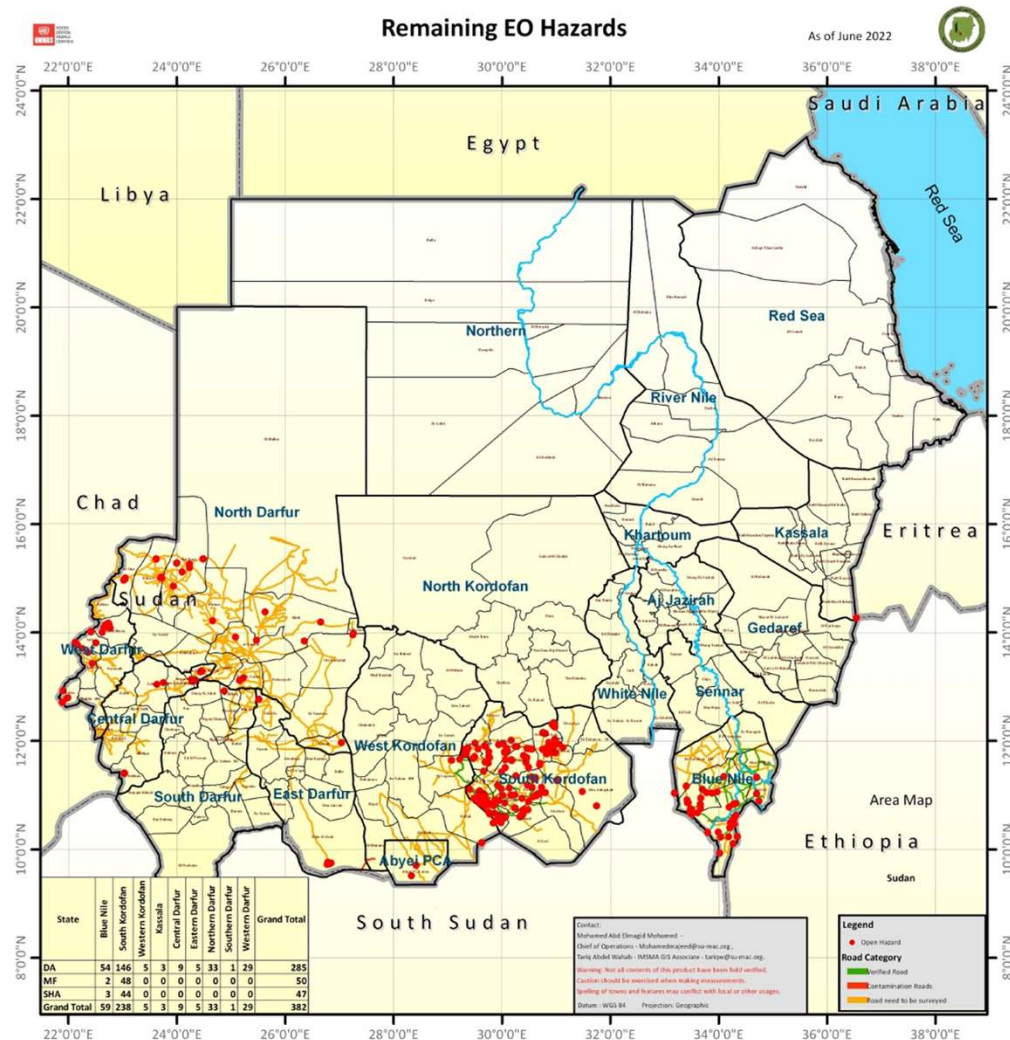


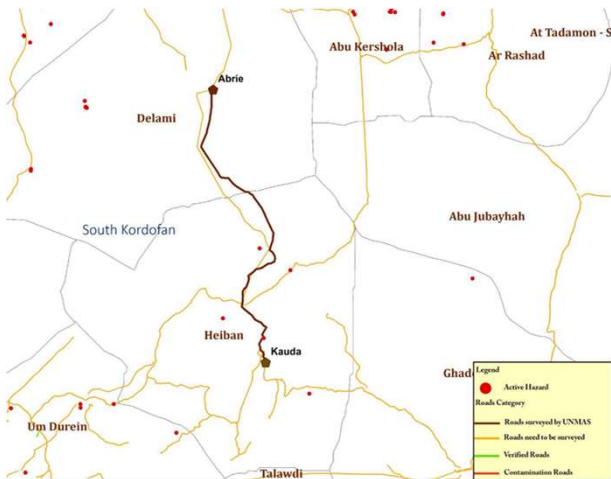
Insert Kordafan Vid

MINE ACTION AS A GATEWAY FOR PROTECTION

1. Building trust between the government and opposition groups for crossline operations

Gained access- the Juba Peace Agreement
(June 2020)





Map of the **humanitarian corridor** opened (left) and tractors using the humanitarian corridor (right), South Kordofan



Assessment of UNHCR compound, Al Geneina, West Darfur

2. Securing access for humanitarian actors

- Surveying and clearing areas to enable access
- Responding to humanitarian requests
- Capacity building of humanitarian personnel



Clearance operations, Dalami, South Kordofan



THE UNTFHS PROGRAMME

-

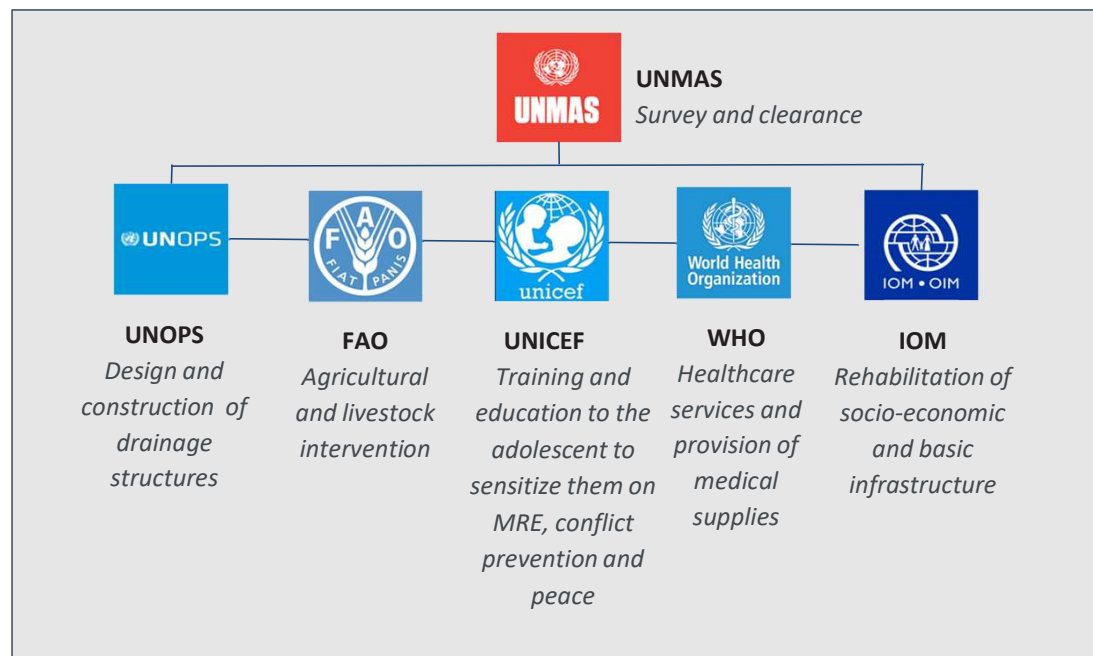
Dalami and Abu Karshola, South Kordofan State, Sudan

[MAP](#)

- Active inter-tribal conflict until 2016.
- Some military movement ongoing.
- Dalami and Abu Kershola are categorized as grey zones/area due to the presence of mines and ERW (post-conflict) and related contamination levels impacting the lives of local communities.
- Abu Karshola 6,636 population and Dalami 17,000 population.
- The main economic activities of the area are agriculture and pastoralist, attracting a diverse range of laborers, including Arabs, Darfurians, and South Sudanese.
- The main migratory route (as shown on the map) passes through Dalami and Abu Karshola and is known as the western route, it begins in Habila locality and crosses to the eastern corridor of SKS until it reaches WHN, El Jazira state.

THE UN TRUST FUND PROGRAMME IN SUDAN

Recovering from conflict: Integrated Support for Most Vulnerable Communities in South Kordofan



Year of implementation: February 2020 - January 2023; **Budget:** \$5 million



THE UN TRUST FUND PROGRAMME IN SUDAN

Major Access Challenges

- Rainy season
- Inter-tribal conflicts
- Restricted access to SPLM-N-controlled areas
- EO contamination

Achievements

1. **Secured safe return/resettlement of IDPs and Refugees and their livelihood support.** *More than 50,000 sqm cleared from EO hazards and high priority roads cleared in Dalami and Abu Kershola localities.*
1. **Improved socio-economic assistance for community stabilization and increased access to livelihoods.** *Two local seed store, four farmers field schools and 24 demonstration farms established; 3,000 households received field and assorted vegetable seeds and hand tools and 3,500 kg of pasture's seeds collected and broad casted onto degraded rangeland for its rehabilitation. 260 heads of goats distributed to 87 women headed households.*
1. **Improved access to clean water, basic healthcare and basic social services facilitated for local communities.** *Rehabilitation of two health centers; construction of two water yards and installation of a solar energy source, provision of 10 Rapid Response Kits to 17 health facilities and six water quality monitoring to the two localities.*
1. **Increased disease surveillance and outbreak alert investigation and response capacity.** *Expanded the Disease surveillance coverage in the 2 localities from 56% to 97% which resulted in detecting and responding to almost 95% of outbreak alerts (24 out of 26 alerts) within 72 hours of report.*
1. **Improved livelihood and representation of adolescents in the communities enabling them to protect themselves from violence.** *Out of 110 unaccompanied and separated children, 46 placed in alternative family care and 64 reunified with primary caregivers in the communities. Youth Consultation Workshop held as a prioritization exercise and establishment of committee at the start of the project to guide the overall framework. 47 children admitted in the Stabilization Center.*





**What does 'security'
mean to you in your
everyday life?**



Insert Video - Intro to Human Security

INTRODUCTION

- What is 'human security'?

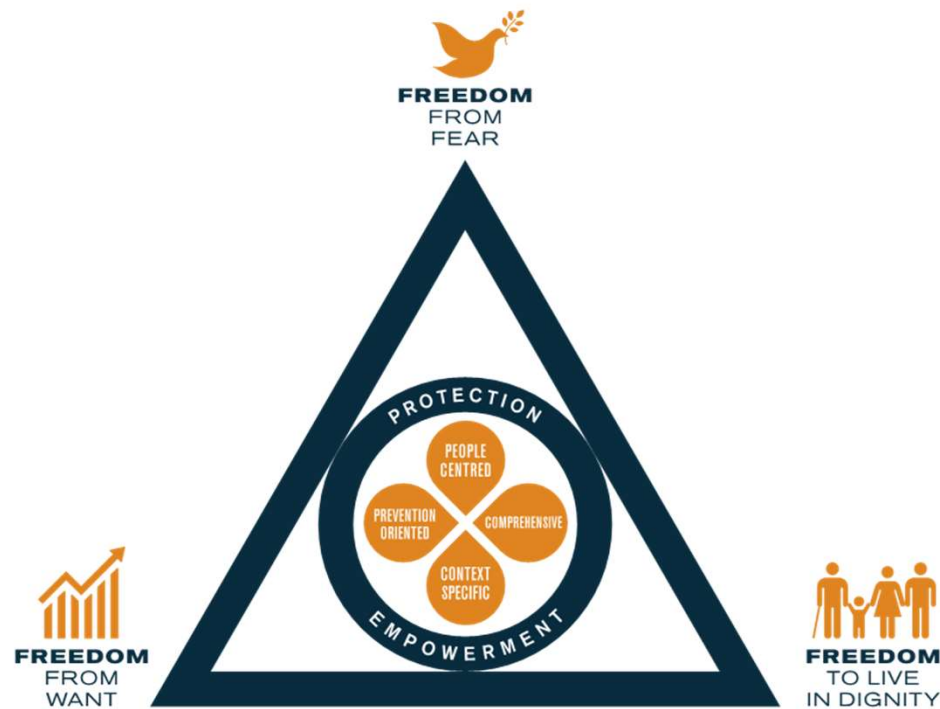
*"...human security is an **approach** to assist Member States in identifying and addressing **widespread and cross-cutting challenges to the survival, livelihood and dignity of their people.**"*

*"Human security calls for **people-centred, comprehensive, context-specific and prevention-oriented responses** that strengthen the **protection** and **empowerment** of all people and all communities."*

(General Assembly resolution 66/290)



HUMAN SECURITY IS AN OPERATIONAL FRAMEWORK



- People-centred
- Comprehensive
- Context-specific
- Prevention-oriented
- Protection & empowerment

The principles must be applied together!



THE HUMAN SECURITY APPROACH





United Nations Trust Fund for Human Security

finances programmes
that translate the
human security
approach into practical
actions and provide
concrete and
sustainable benefits to
vulnerable people and
communities.



<https://www.un.org/humansecurity/>

<https://www.unssc.org/courses/human-security-principles-practice>



THE HUMAN SECURITY APPROACH AS A TOOL FOR ACCESS FOR PROTECTION

1. **People centered and context specific**, which aims to leave no one behind.
2. **Comprehensive**, supporting coordination and integrated interventions on access for protection.
3. **Prevention oriented**, by drilling down to ascertain the real **root causes** of challenges and by building solutions that are in themselves **sustainable and resilient**, human security promotes the development of **early warning mechanisms** that help to mitigate the impact of current threats and, where possible, prevent the occurrence of future challenges.
4. **Multi-sectoral**, covering the **different protection themes** (GBV, displacement, civilians infrastructures, destruction of personal property) and the **different areas of responsibilities**: Child Protection, GBV, Housing Land and Property and Mine Action.
5. **Integrates participation & empowerment**, employs a dual strategy of *protection and empowerment*, which means it is working both from 'top-down' as well as 'bottom-up', ensuring that interventions to enhance the policy/institutional environment (protection) are combined with community-based solutions (empowerment).
6. The HS approach can support the **operationalization of the humanitarian-development-peace nexus** (HDPN).



REMAINING CHALLENGES IN MINE ACTION

1. **Blue Nile**, roads and areas contamination continues to hinder humanitarian access. Clearance and risk education are vital for moving forward. Five land release teams fully funded for four years could reduce the hazard to manageable proportions - Total cost \$10 million

2. **South Kordofan**, highest contamination and restricted access heighten the problem for safe access. Five land release teams could gain vital access to all roads and areas. Seven years will see the residual threat being reduced to being able to hand over to government responsibility - Total cost \$14 million

3. **Darfur**, EOD and survey teams with Community Liaison Team could reduce the threat of EO in Darfur drastically. If full access is given this could be completed within two years -Total cost \$ 6 million

With \$30 million we could eradicate explosive ordnance in Sudan within 5 years, provided we have full access and there is no resumption of conflict.



Q&A

CLOSING REMARKS





***THANK YOU.
GRACIAS.
MERCİ.***

#PROTECTIONFORUM2022

#ACCESSTHATPROTECTS

For more information:

Sofía López García -

sofialg@unops.org



@ProtectionClust



@ProtectionCluster



@global-protection-cluster

