



**UN GEOSPATIAL NETWORK**

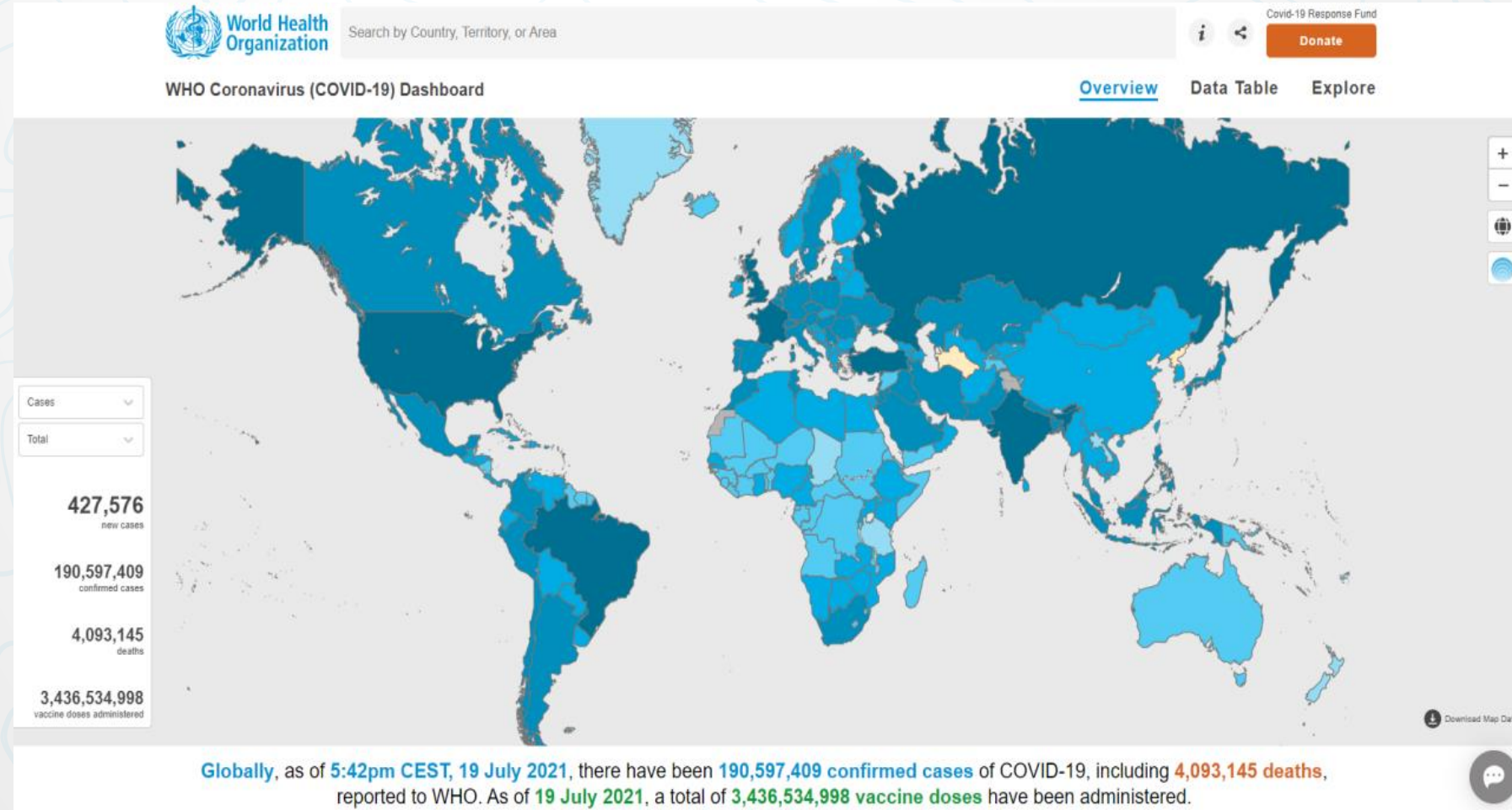
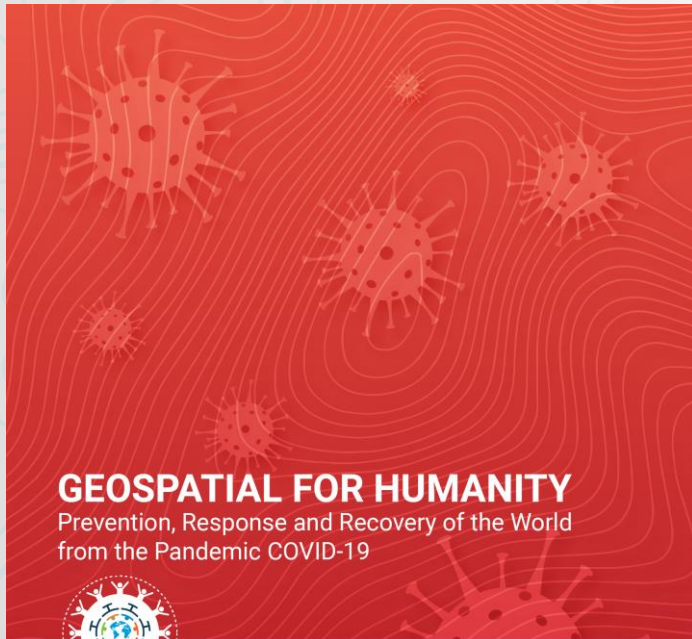
UNITED NATIONS COMMITTEE OF EXPERTS ON  
GLOBAL GEOSPATIAL INFORMATION MANAGEMENT

**GEOSPATIAL FOR HUMANITY**  
**COVID19 RESPONSE AND THE NEW WORKING GROUP ON**  
**GEOSPATIAL & HEALTH**

Ravi Shankar Santhana Gopala Krishnan  
Geospatial Lead, WHO GIS Centre for Health

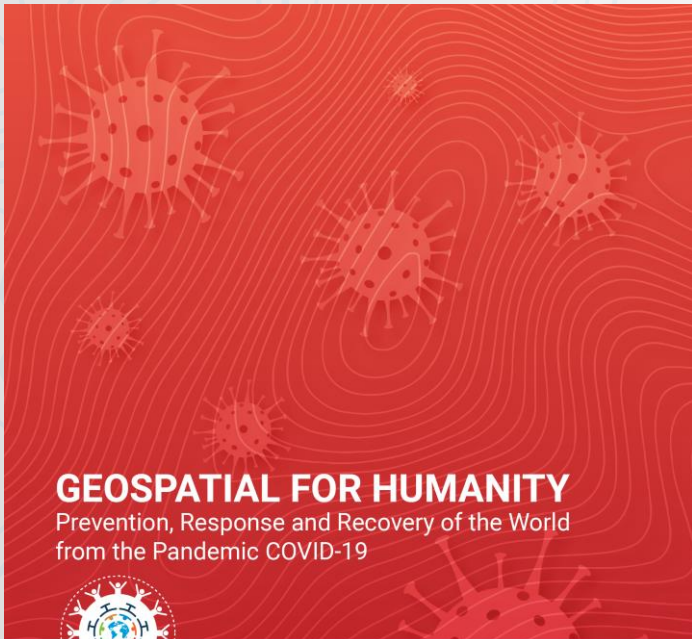
# COVID RESPONSE

## Global COVID-19 situation dashboard and geospatial information products



# COVID RESPONSE

## Global COVID-19 situation dashboard and geospatial information products



### COVID-19 cases and deaths with age and sex reported

Time period for which cases/deaths are summarized

WHO region

- Select all
- AFR
- AMR
- EMR
- EUR
- SEAR
- WPR

Back to menu

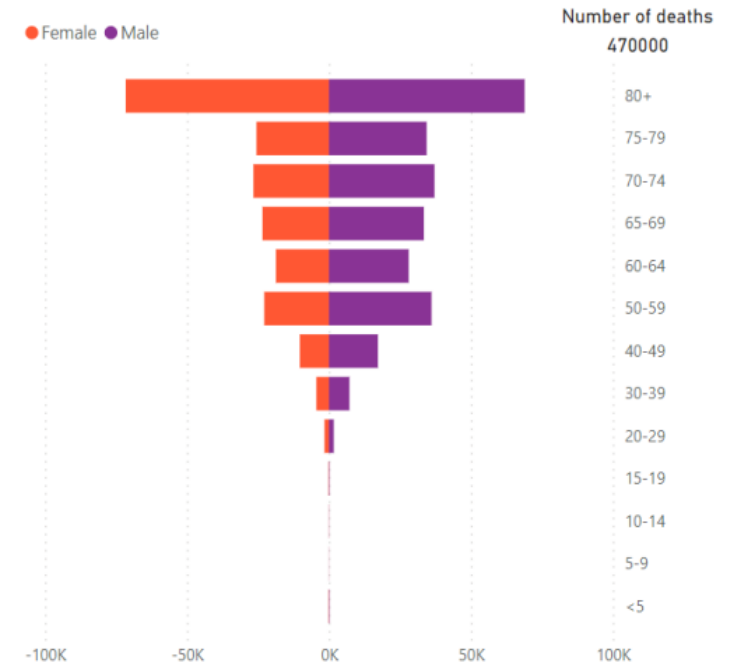
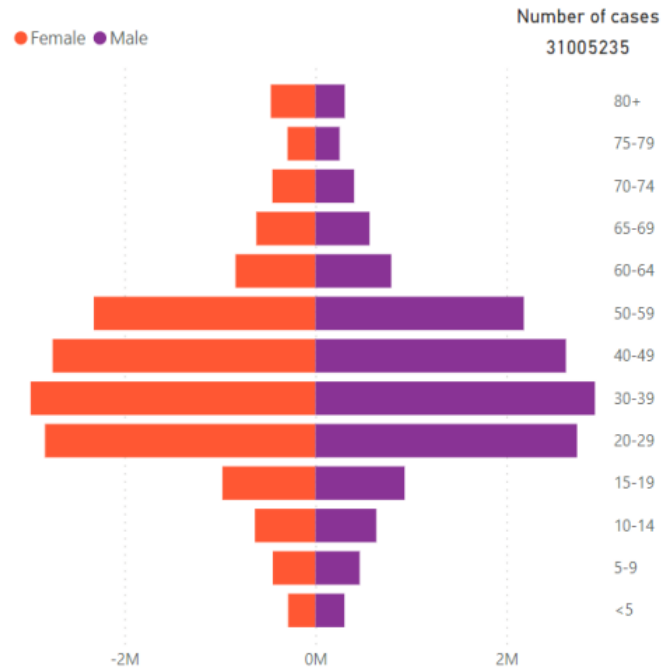
Country, area or territory

All

2/3/2021 7/12/2021

#### Cases (confirmed and probable)

#### Deaths (confirmed and probable)



Ratio male/female

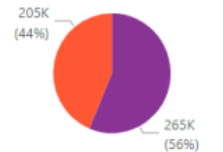
0.95 Cases

1.29 Deaths

Cases



Deaths



Number of countries, areas or territories

101

Data source (detailed su...  
CRF, WEEKLY\_V2

WHO COVID-19 Mart

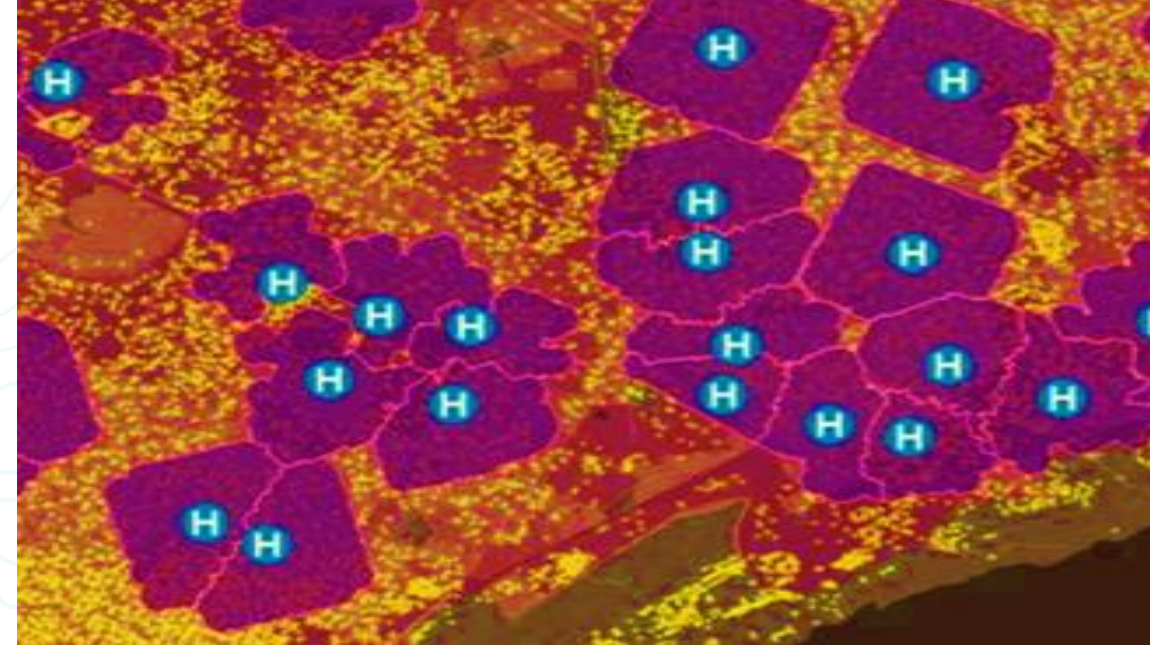
Data cleaning is continuous, please interpret with caution

Disclaimer

© Copyright World Health Organization (WHO). (2021). All Rights Reserved

# RECOVERY OF COVID-19

## Equitable Access to COVID-19 vaccination centres

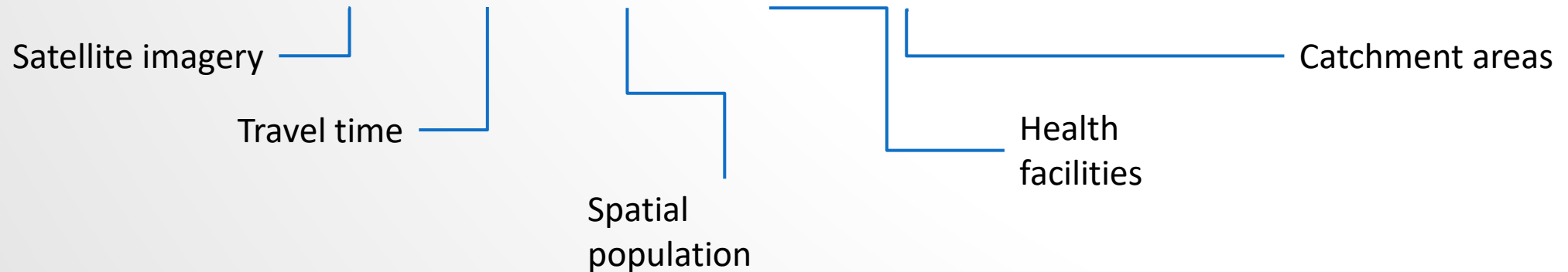
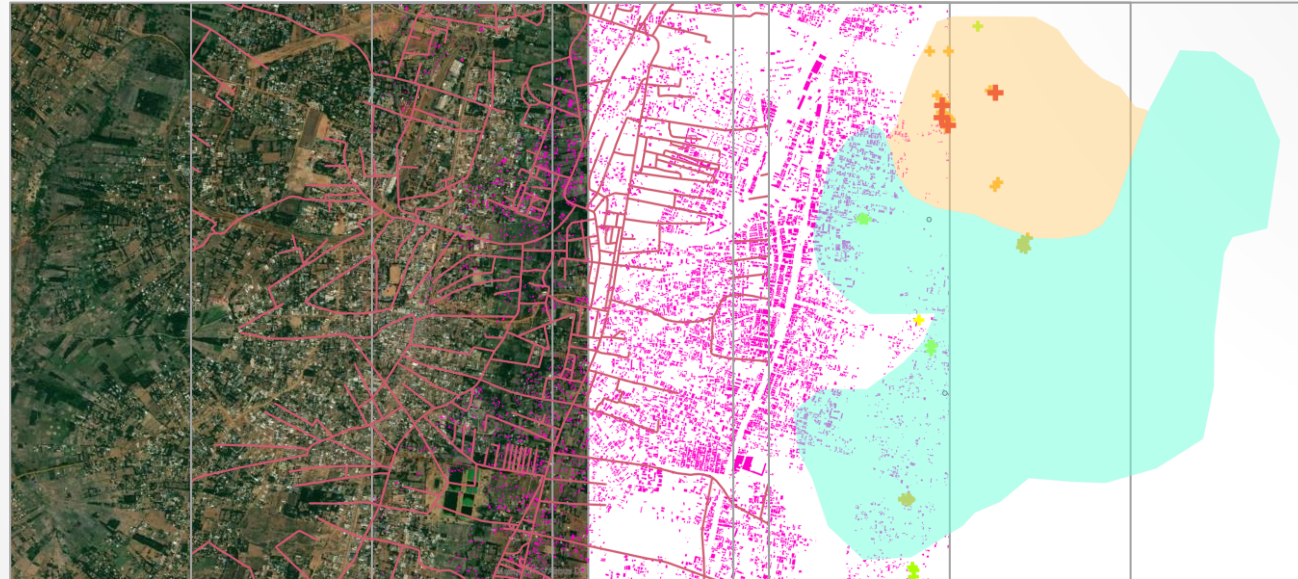


**UN GEOSPATIAL NETWORK**  
UNITED NATIONS COMMITTEE OF EXPERTS ON  
GLOBAL GEOSPATIAL INFORMATION MANAGEMENT



# DATA COMPONENTS

## Equitable Access to COVID-19 vaccination centres



# Meet the team



Ravi - Lead, WHO GIS Centre for Health, DNA/DDI



Kshitij- Web developer



Prashant - GIS Specialist



Kathleen - GIS Cartographer



Daniel - GIS Server Manager



Bodour - Project Management



Nikki Stifle - Project Management



Inge - Capacity Development Specialist



Adam - GIS Developer



Guy - Geospatial Engineer



Julia - GIS Data Assistant



Robert - Geospatial data analyst



Naomi Morris - GIS Analyst



Asela - GIS Specialist, Data Manager



Anna - Biologist, GIS Analyst



Michael - Geospatial Data Scientist

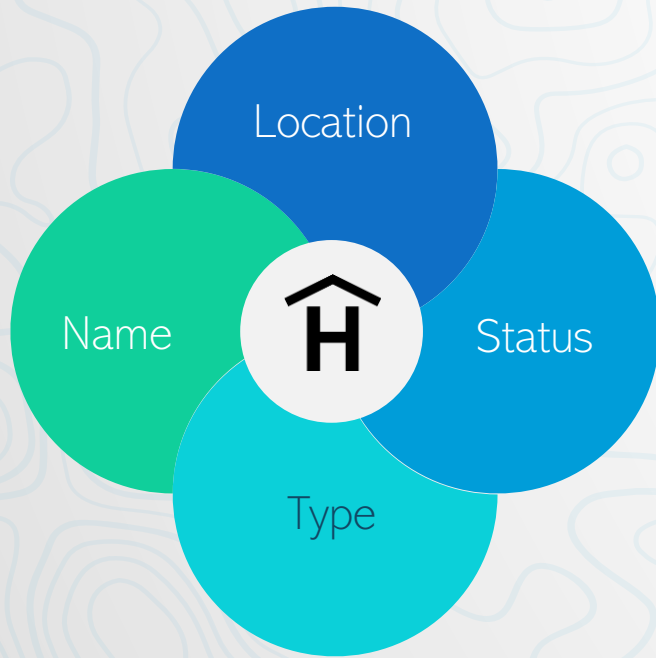


Chris - Emergency Specialist



Annette - GIS Consultant

# Global Health facility database



Imagine Health facility database as a global good.

## Task team on Geospatial & Health

Why do we need a task team?

Governance, policy issues,  
data standards and consultation



## Global Health facility database

What are the challenges in building a GHFD?  
What are the minimum parameters required to be collected to have global good product?  
What is the taxonomy and Hierarchy?  
What are the Governance mechanism need in place to have a sustainable GHFD?



# UN GEOSPATIAL NETWORK

UNITED NATIONS COMMITTEE OF EXPERTS ON  
GLOBAL GEOSPATIAL INFORMATION MANAGEMENT

## Contacts

### UN Geospatial Network

UN-GGIM Secretariat  
Geospatial Information Section – OICT  
& Statistics Division – DESA

United Nations  
New York, NY 10017  
United States of America

[secretariat@unggim.un.org](mailto:secretariat@unggim.un.org)