



UN GEOSPATIAL NETWORK

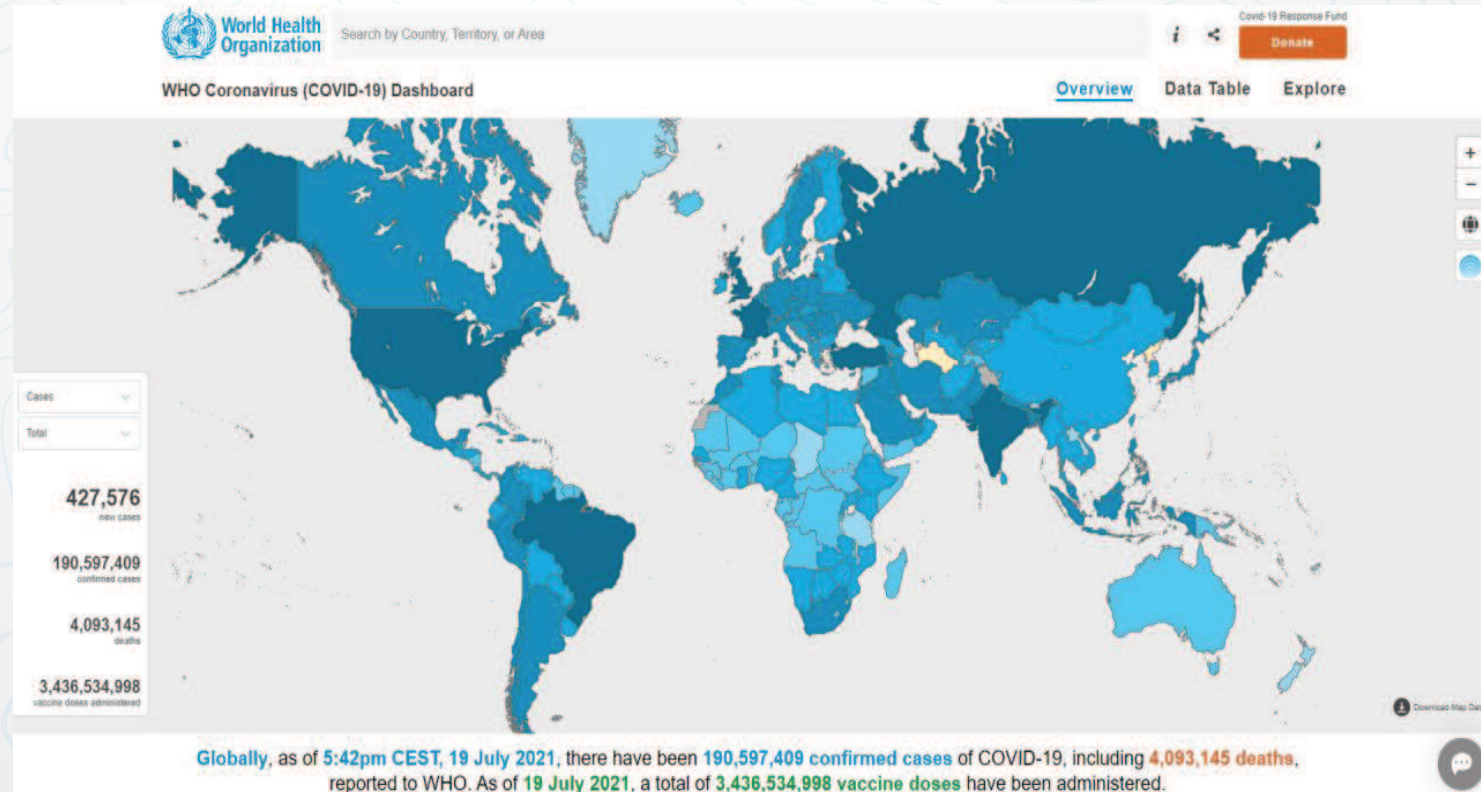
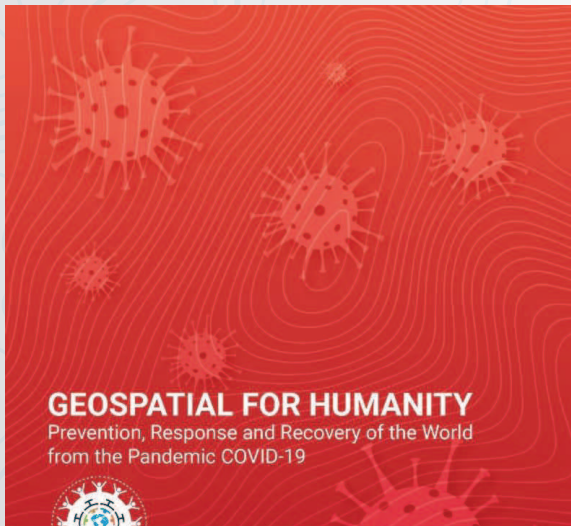
UNITED NATIONS COMMITTEE OF EXPERTS ON
GLOBAL GEOSPATIAL INFORMATION MANAGEMENT

Side Event of the UN Geospatial Network at the Eleventh Session of UN-GGIM

Geospatial For Humanity: Covid19 response, and
task team on the nexus Geospatial and Health

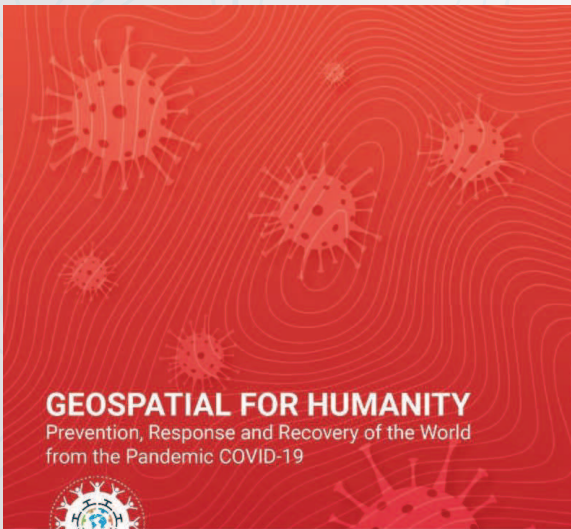
COVID RESPONSE

Global COVID-19 situation dashboard and geospatial information products


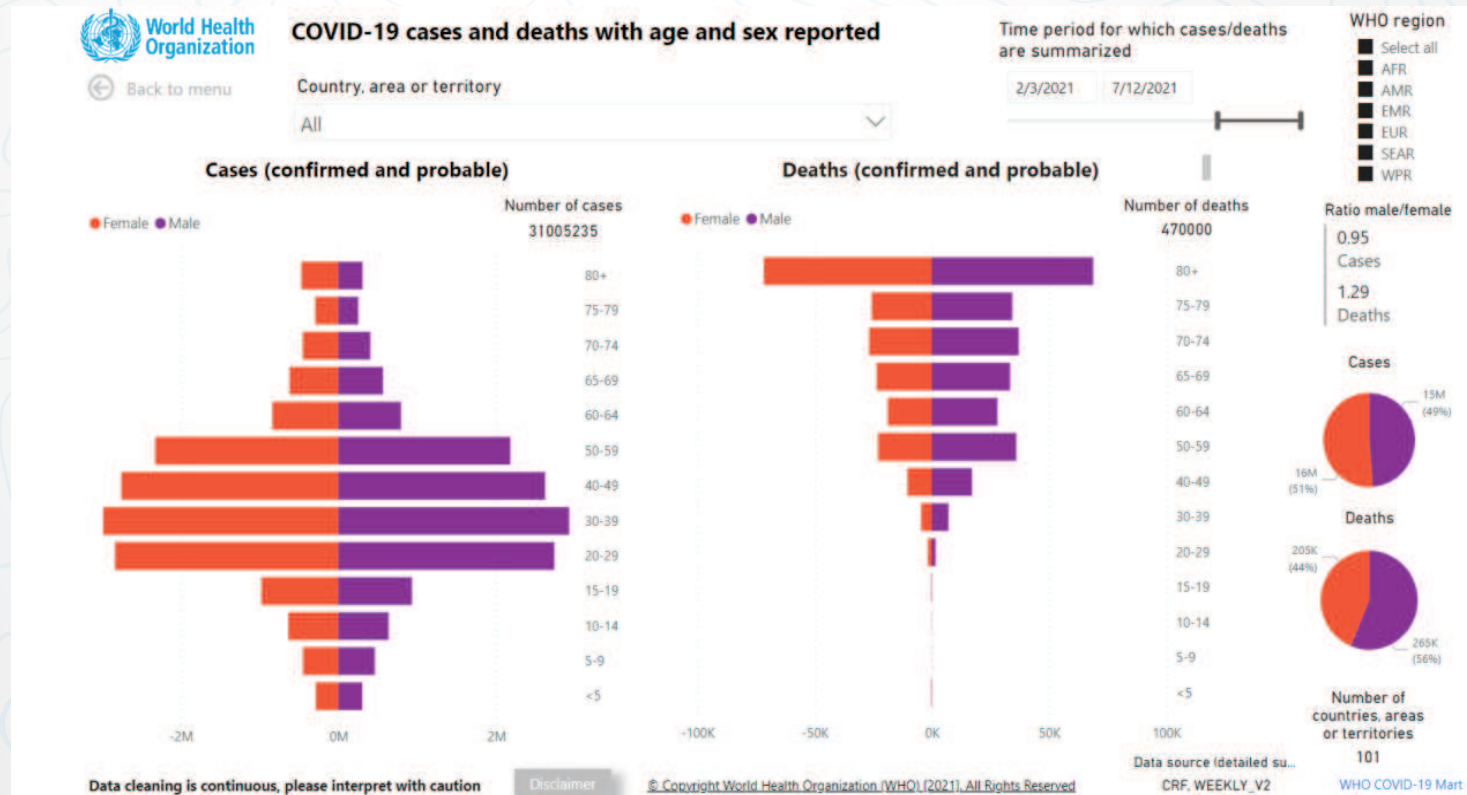


COVID RESPONSE

Global COVID-19 situation dashboard and geospatial information products

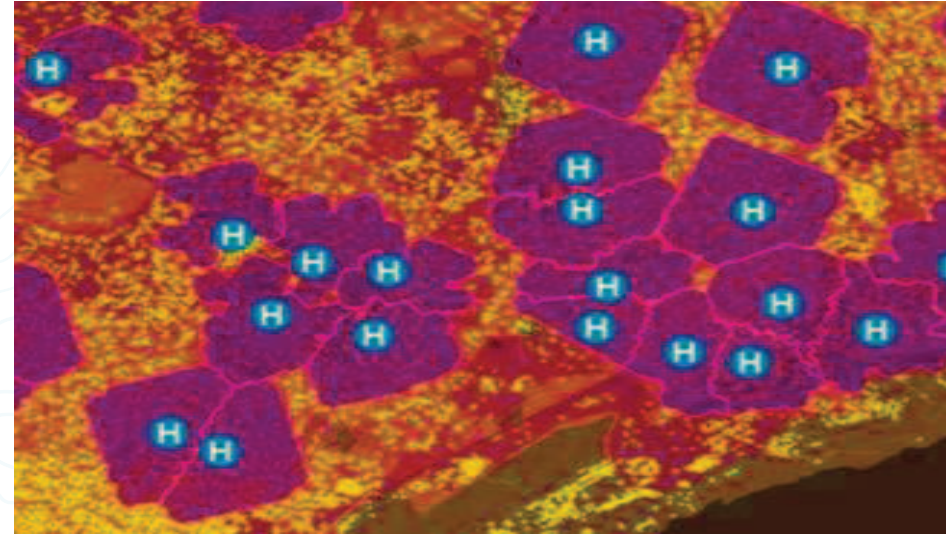


GEOSPATIAL FOR HUMANITY
Prevention, Response and Recovery of the World from the Pandemic COVID-19

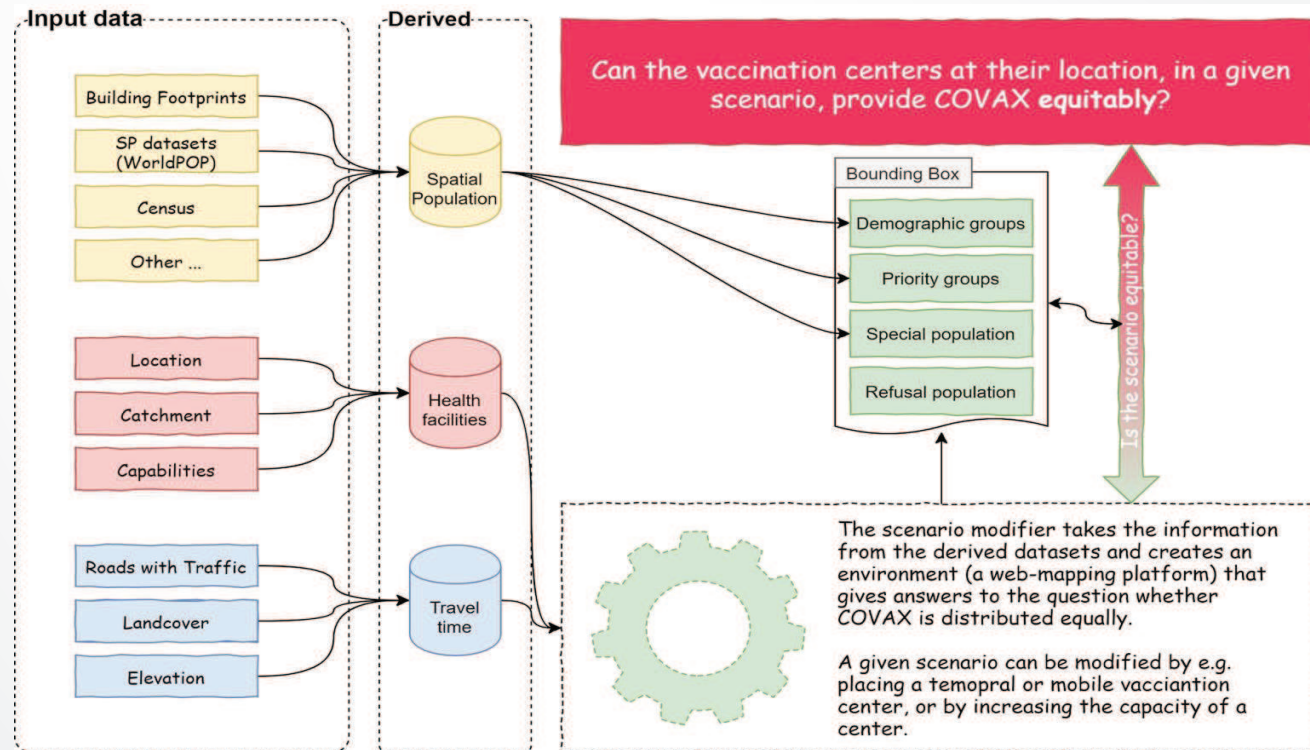
RECOVERY OF COVID-19

Equitable Access to COVID-19 vaccination centres



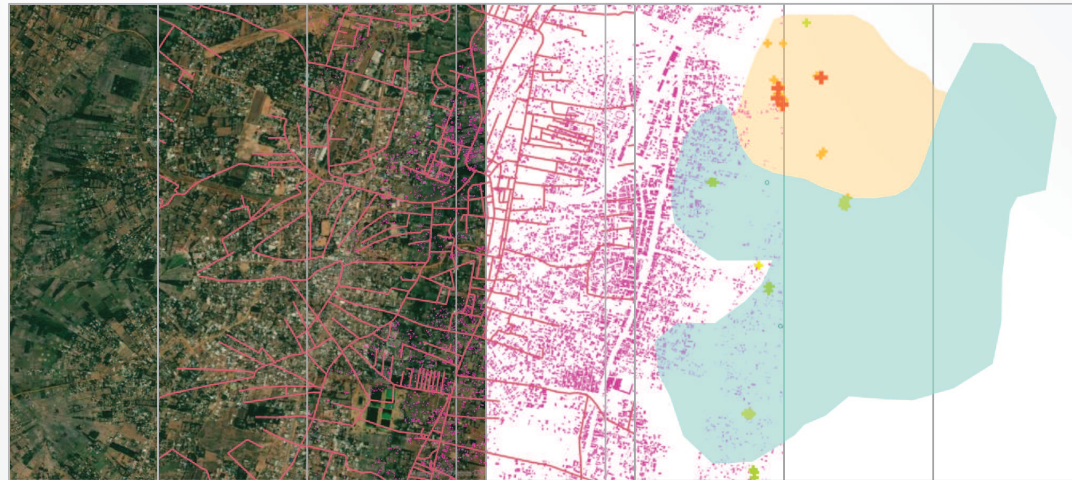
CONCEPTUAL FRAMEWORK

Equitable Access to COVID-19 vaccination centres



DATA COMPONENTS

Equitable Access to COVID-19 vaccination centres



Satellite imagery

Travel time

Spatial population

Health facilities

Catchment areas



UN GEOSPATIAL NETWORK
UNITED NATIONS COMMITTEE OF EXPERTS ON
GLOBAL GEOSPATIAL INFORMATION MANAGEMENT

PROPOSED FRAMEWORK

Spatial Population

- target groups
- priority groups (e.g., health workers)
- By age/gender

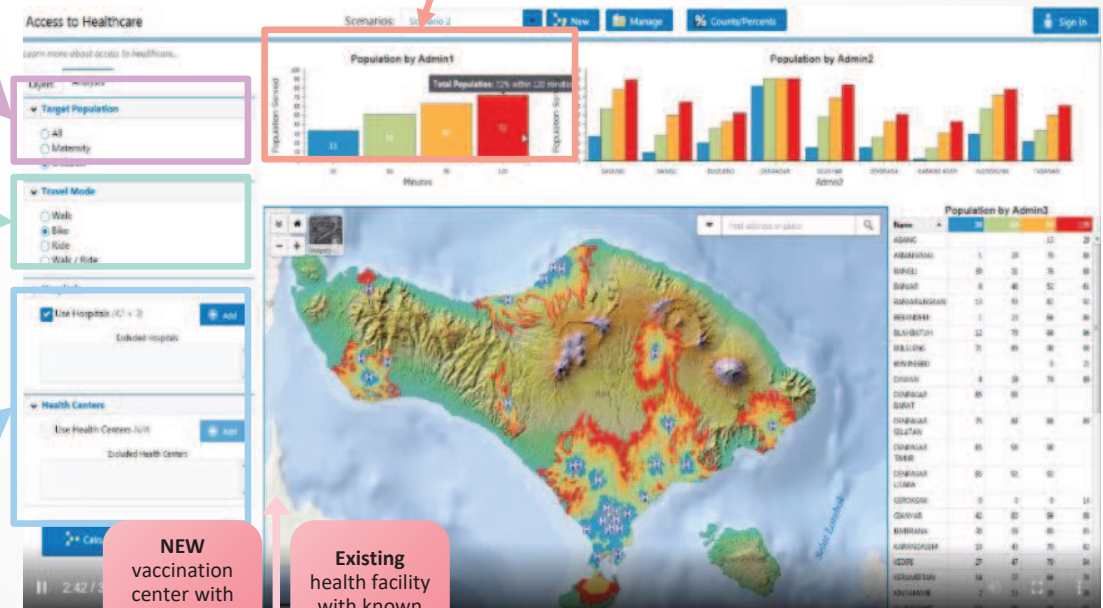
Accessibility – travel time surface

- Mode of transportation
- Landcover etc.

Vaccination Center scenario builder

1. VC with COVAX cap. and with catchment
2. Upgrade existing health facility to VC with COVAX cap. and with catchment
3. New VC with COVAX cap. and with catchment
4. 1.-3. without known catchment
5. Upload catchment as polygon or list of settlement names
6. Adjust staff and inventory of vaccination center

Temporal split in 30, 60, 90, 120 Minutes (?)



NEW
vaccination
center with
known
catchment

Existing
health facility
with known
catchment

NEW
vaccination
center
without
catchment

Existing
health facility
without
catchment

WHO GIS Centre for Health

By connecting maps, apps, data and people, the WHO GIS Centre is dedicated to supporting countries to make informed public health decisions.

Meet the team



Ravi- Lead, WHO GIS Centre for Health, DNA/DDI



Prashant- GIS Specialist



Daniel- GIS Server Manager



Kathleen- GIS Cartographer



Inge - Capacity Development Specialist



Adam - GIS Developer



Julia - GIS Data Assistant



Guy - Geospatial Engineer



Asela - GIS Specialist, Data Manager



Anna- Biologist, GIS Analyst



Chris - Emergency Specialist



Michael- Geospatial Data Scientist

Three workstreams

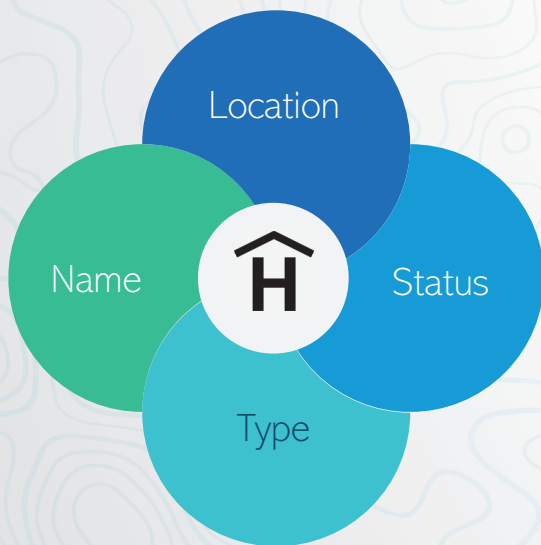
Tools and technology

**Technical exchange
and partnership**

**Technical support &
Capacity Development**



Global Health facility database



Imagine Health facility database as a global good.

Task team on Geospatial & Health

Why do we need a task team?

Governance, policy issues,
data standards and consultation

Health facility and Health catchments areas

Task team on Geospatial & Health

Global Health facility database

What are the challenges in building a GHFD?
What are the minimum parameters required to be collected to have global good product?
What is the taxonomy and Hierarchy?
What are the Governance mechanism need in place to have a sustainable GHFD?



UN GEOSPATIAL NETWORK

UNITED NATIONS COMMITTEE OF EXPERTS ON
GLOBAL GEOSPATIAL INFORMATION MANAGEMENT

Contacts

World Health Organization (WHO)

Ravi Shankar Santhana Gopala Krishnan, Geospatial Lead of GIS Centre
santhanagopalakr@who.int