

Figure 1
Rapid Support Forces and Libyan Arab armed forces operations, April 2023

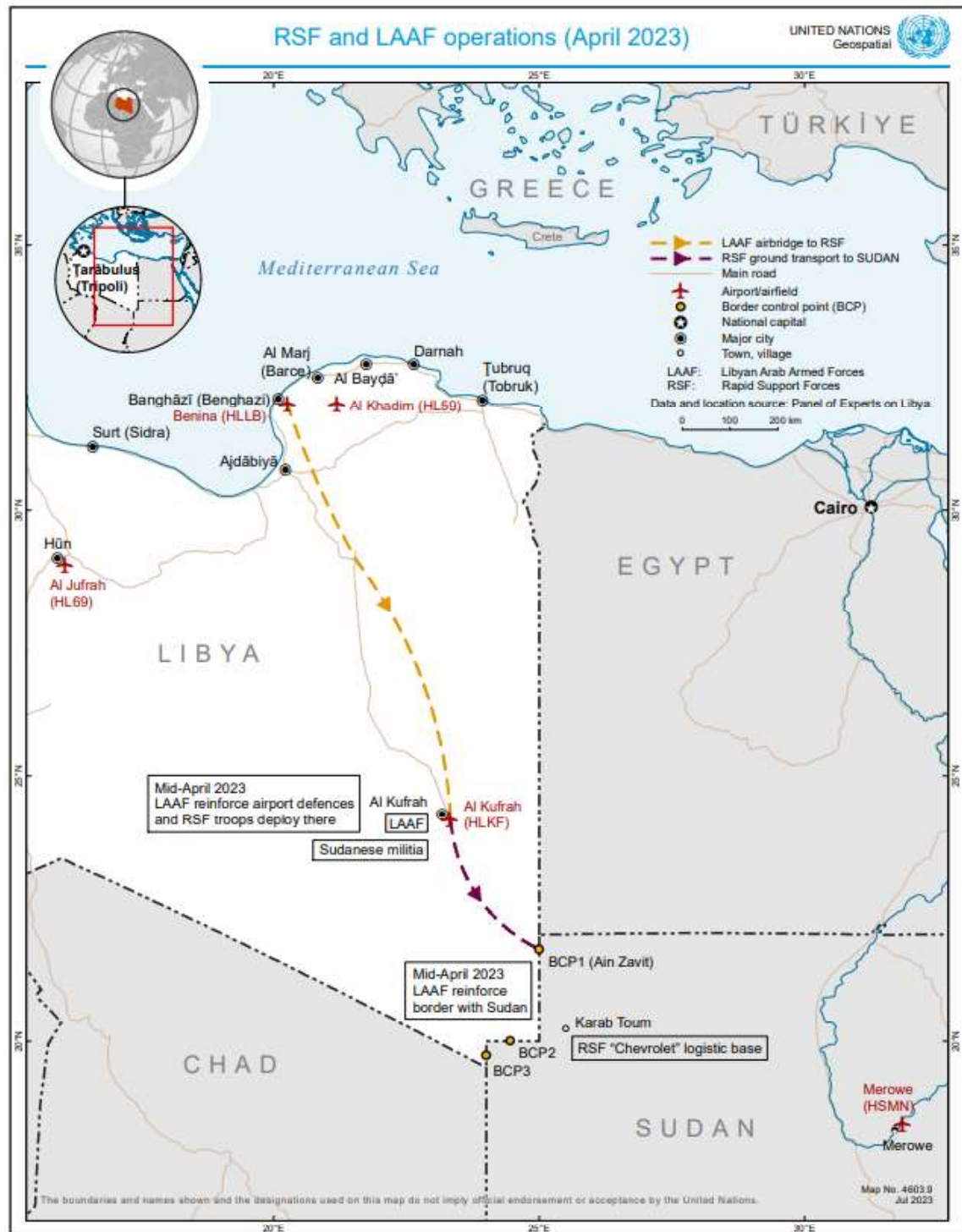
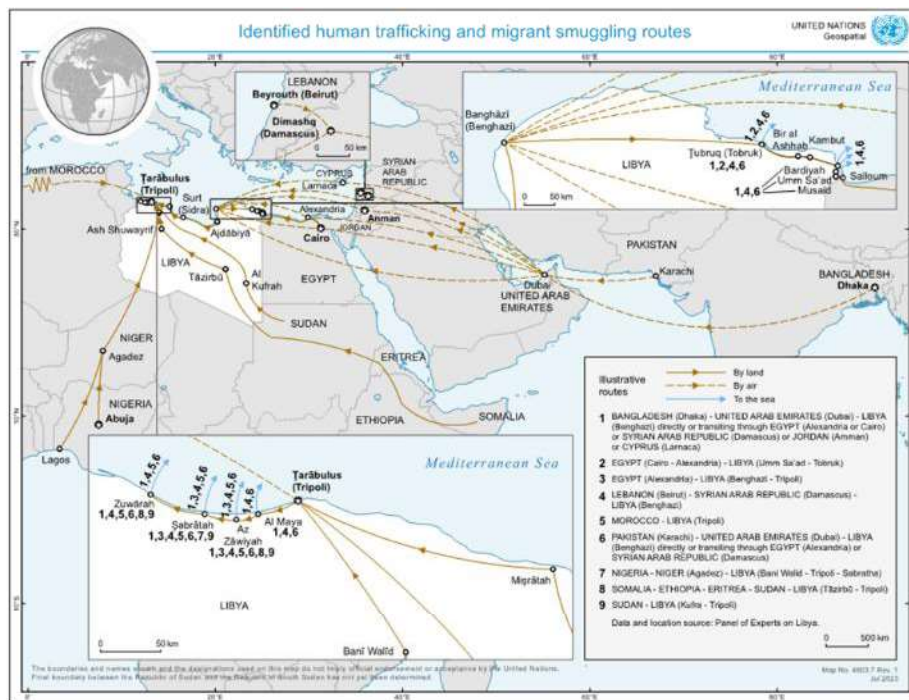
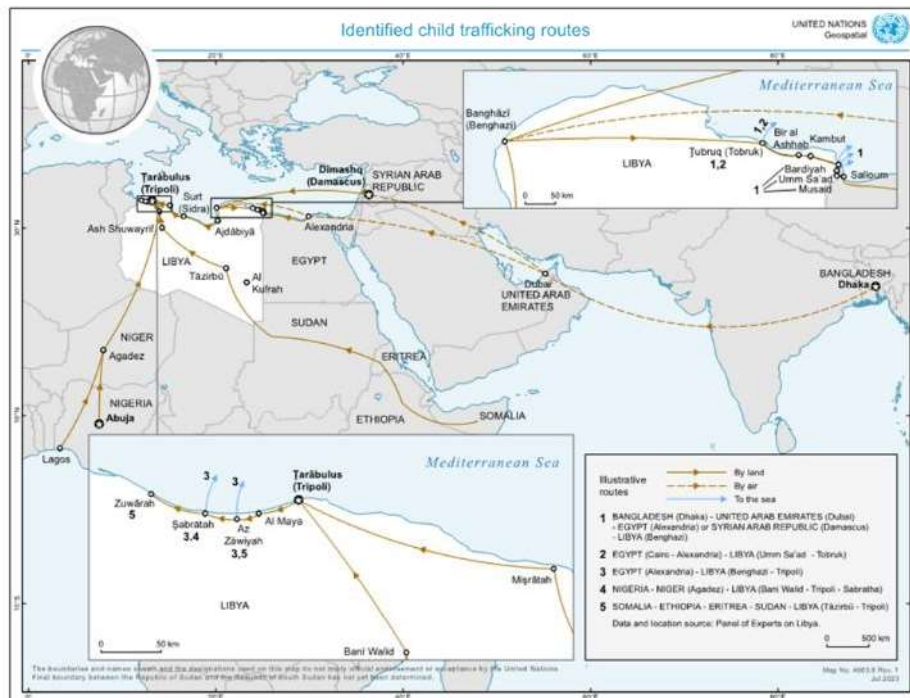


Figure III
Identified human trafficking and migrant smuggling routes



Source: Confidential sources 18, 25–27, 37–72, 80–82 and 88–123.

Figure IV
Identified child trafficking routes



Source: Confidential sources 18, 37–39, 41–43, 45–58 and 107–113.

Figure 16.B.4

Satellite imagery of the construction of the new TBZ detention section within the Gernada facility in Bayda

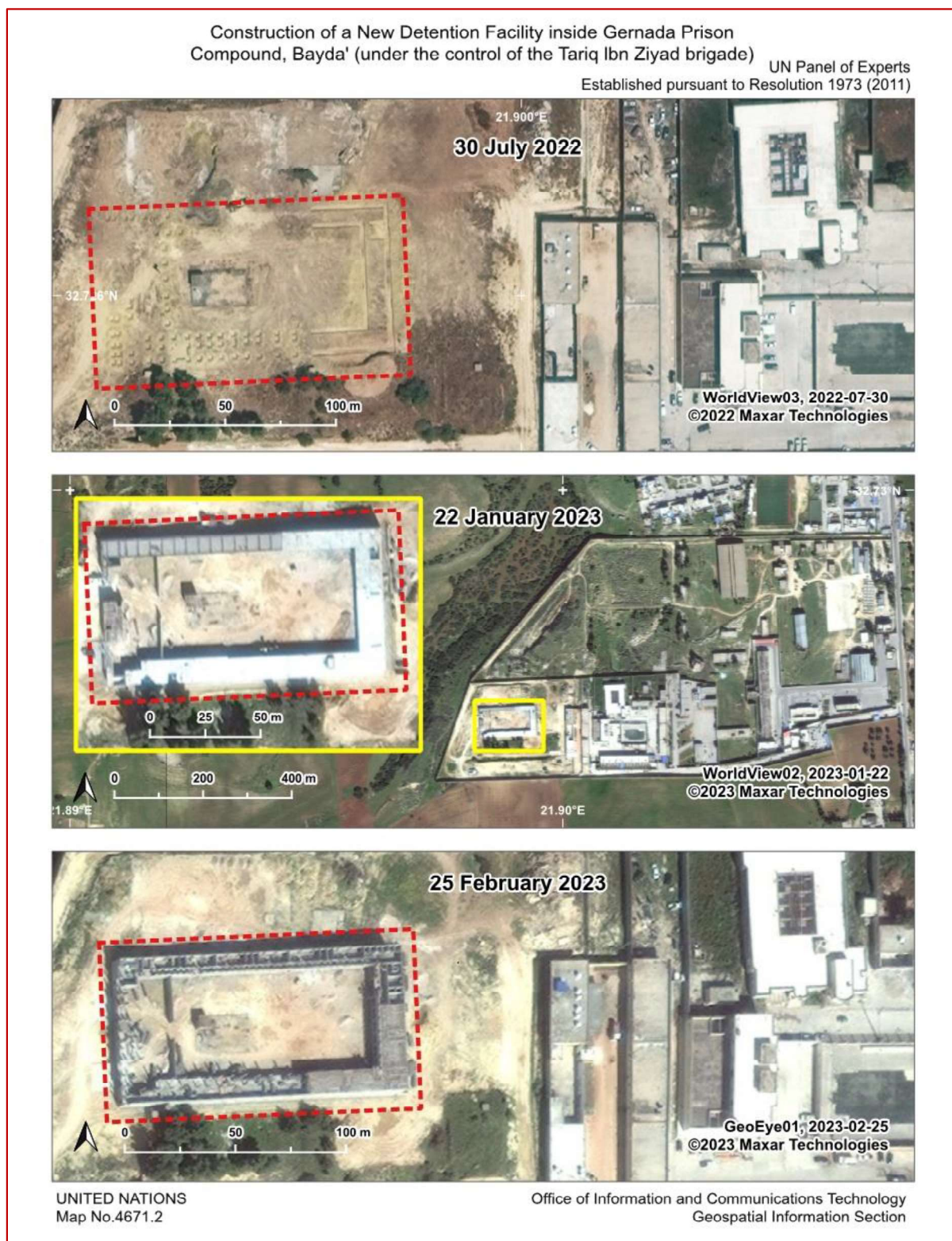


Figure 18.1.

Operation centres of private human trafficking and migrant smuggling networks in Libya

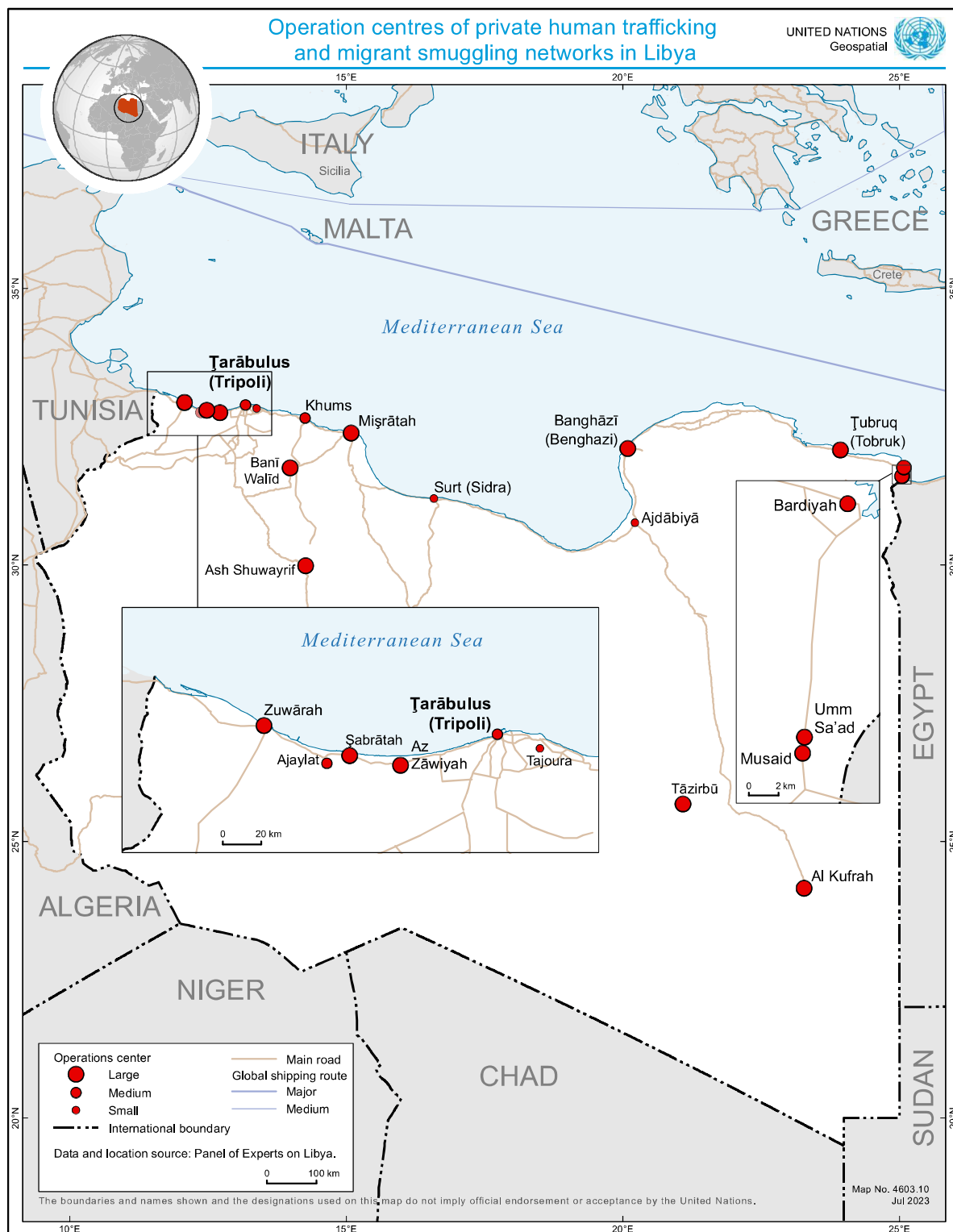
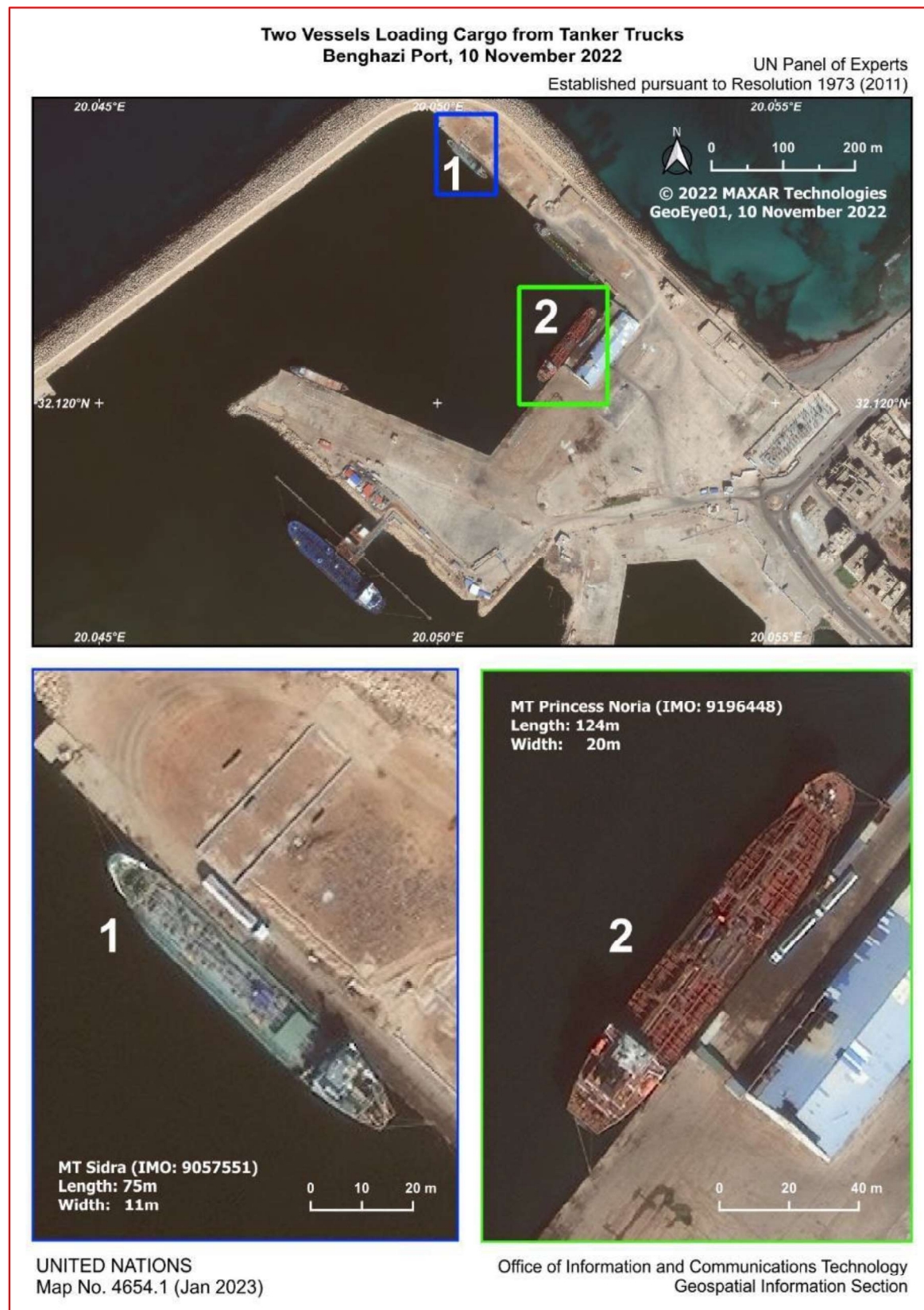


Figure 74.A.2
Development of Benghazi old harbour from a scrap export to a fuel export hub

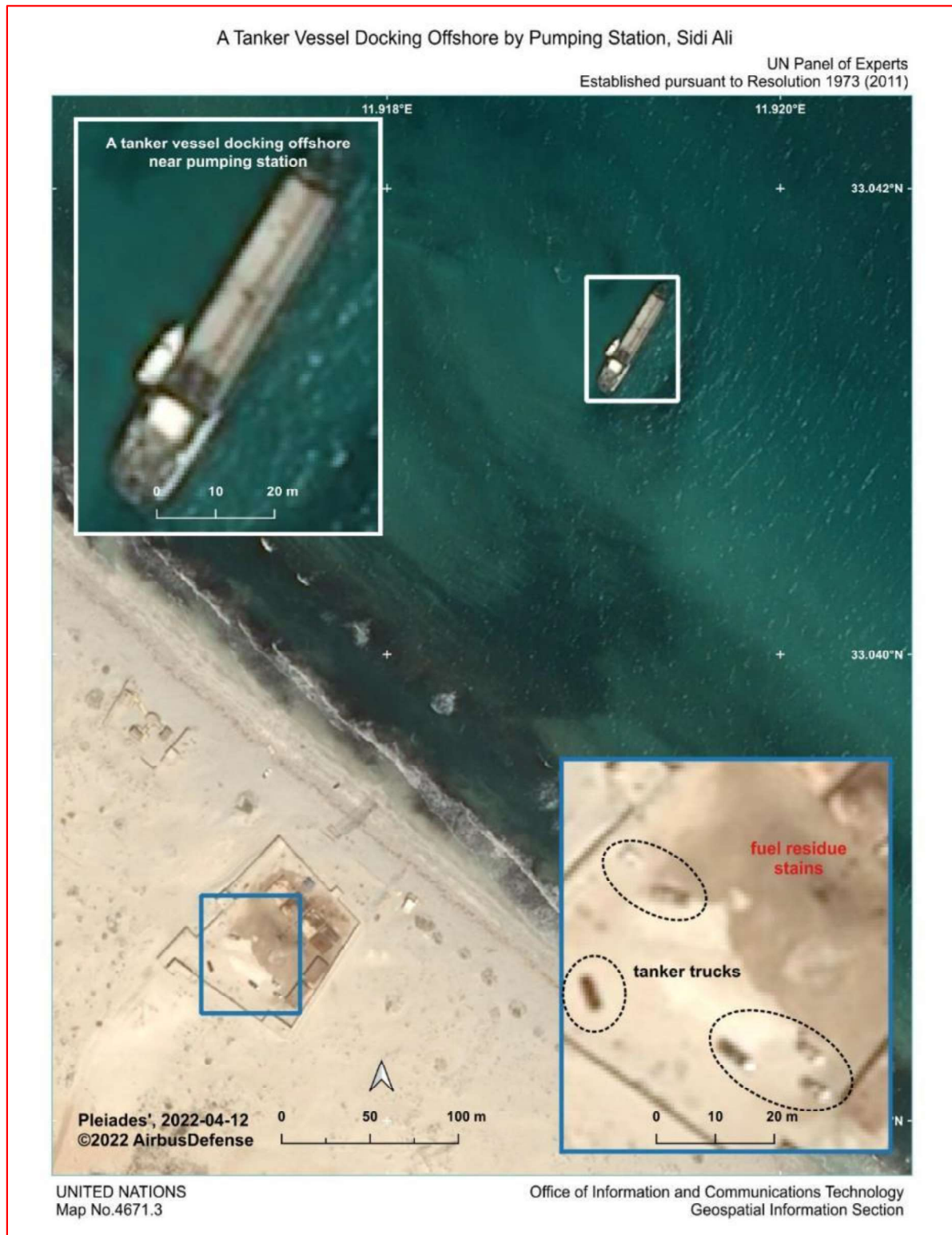


Figure 74.A.3
Example of tanker vessels loading from fuel trucks in Benghazi



Appendix 75.A Satellite imagery of MT *Queen Majeda* in Benghazi old harbour

Annex 76 Unidentified tanker at fuel smuggling pumping station at Sidi Ali



Location is at 33°02'19.37"N, 11°55'01.42"E.