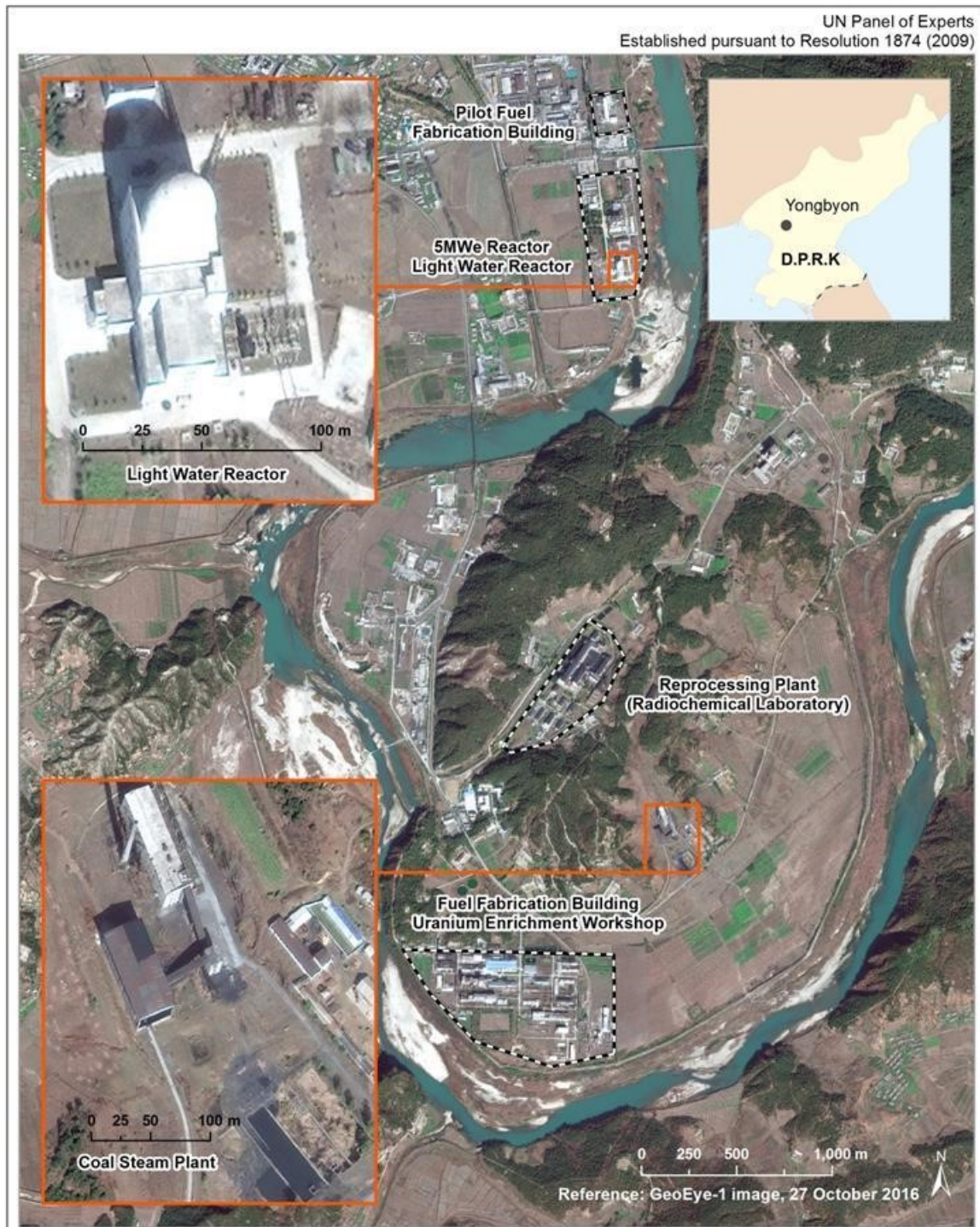


## Annex 3-1: Yongbyon Nuclear Complex Overview



Map No. 4566.4 United Nations  
January 2017

Department of Field Support  
Geospatial Information Section (formerly Cartographic Section)



## Annex 3-2: Yongbyon Light Water Reactor





## Annex 3-3: Yongbyon Steam Plant



Map No. 4566.6 United Nations  
January 2017

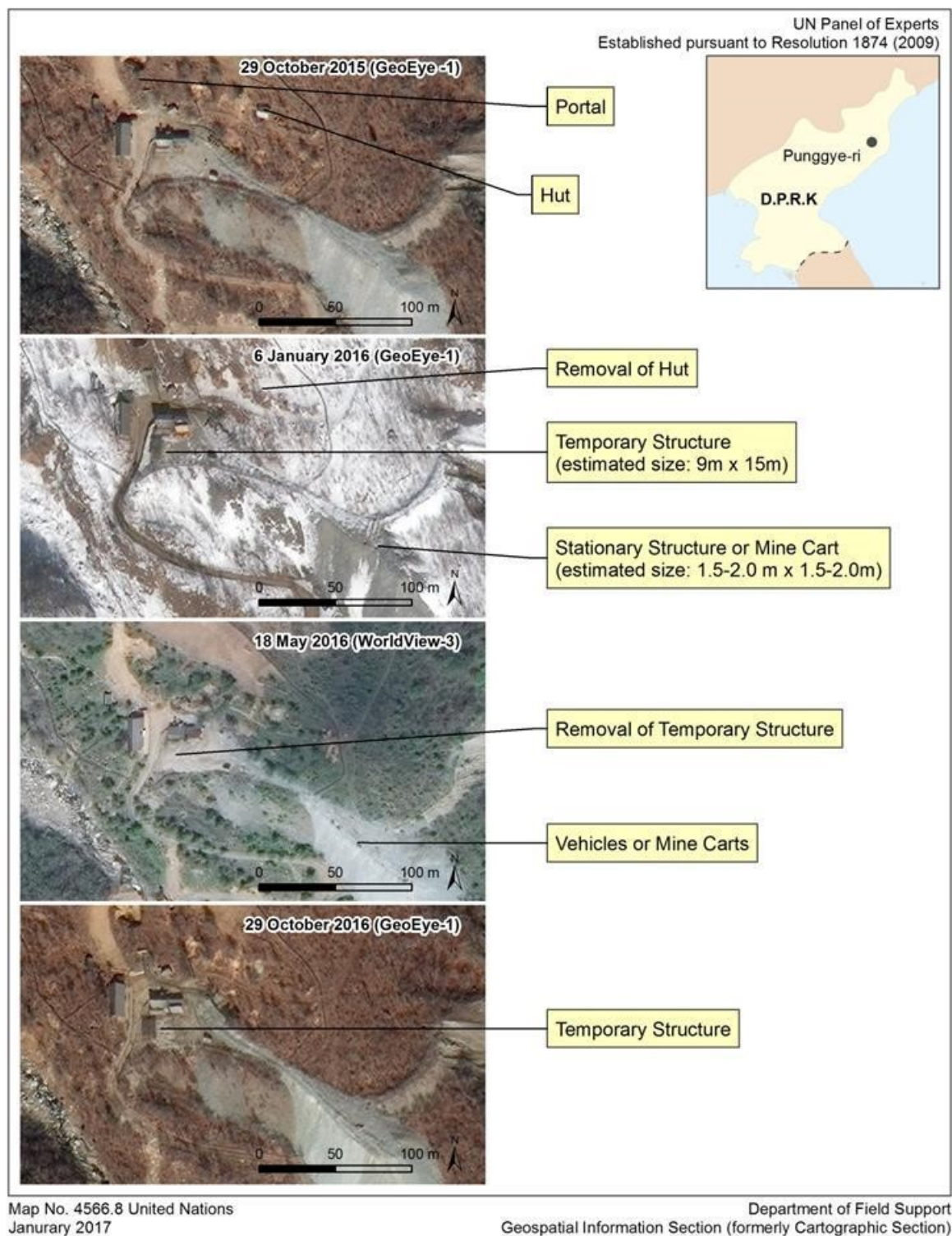
Department of Field Support  
Geospatial Information Section (formerly Cartographic Section)



### Annex 3-4: Punggye-ri Nuclear Test Site Overview



## Annex 3-5: Punggye-ri North and West Portal Area





## Annex 5-7: Wonsan firing position



Source: The Panel

**Annex 5-10: Chamjin complex and ballistic missile test site**





## Annex 5-11: Hamhung ballistic missile engine test site





## Annex 5-12: Sinpo shipyard overview



### Annex 5-13: Sinpo submarine fabrication halls

Submarines constructed or maintained in the Sinpo fabrication halls are launched by moving the submarines on cradles from the halls onto a submersible drydock. To align the drydock with the cradle rails, there are notches cut into the side of the dock walls. Satellite imagery shows that the alignment notches used prior to the upgrading (2013) were narrower than the notches in the docks constructed for the upgraded and new halls. Since the docks for new halls have been built for a wider, larger dock, and not the current submersible drydock, it suggests that newly constructed submarines will be larger. The appearance of a larger floating dock at Sinpo will thus likely indicate the impending launch of a new, larger SLBM submarine.



Map No. 4566.10 United Nations  
January 2017

Department of Field Support  
Geospatial Information Section (formerly Cartographic Section)