

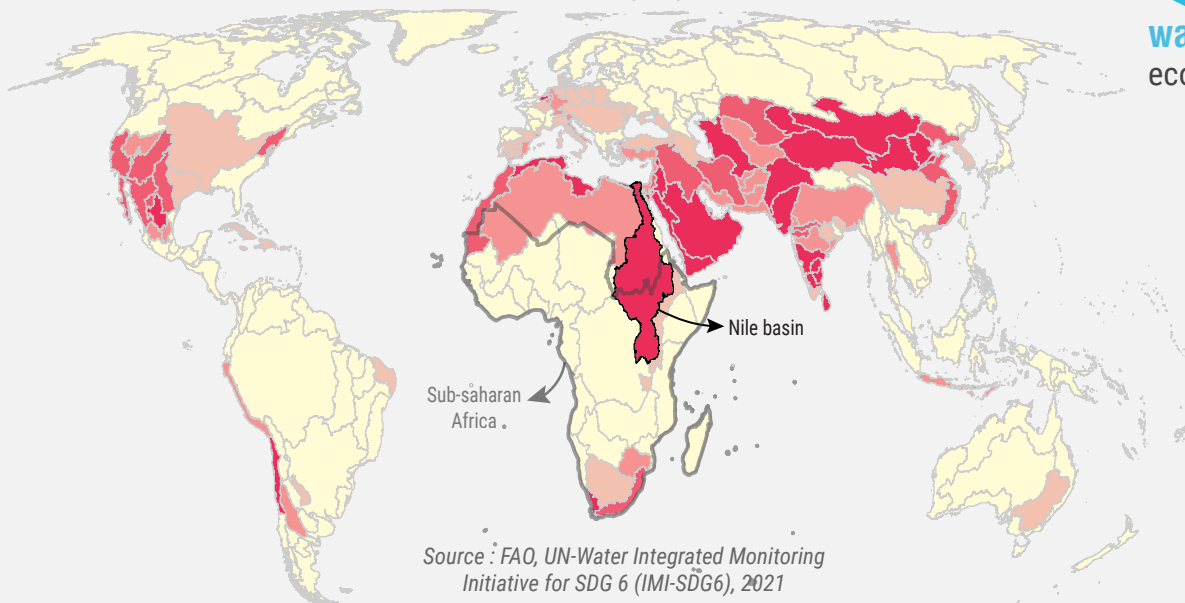
ENSURE ACCESS TO WATER AND SANITATION FOR ALL



By 2030, ensure availability and sustainable management of water and sanitation for all

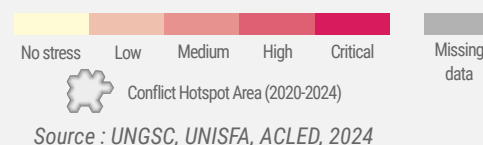
Global level of water stress in 2021 and disaggregation study for Nile Basin

Global water stress by major river basins



◀ **10%** of the global population resides in countries facing **high or critical water stress**, impacting access to water for personal use and affecting economic activities, agricultural production, and food security.

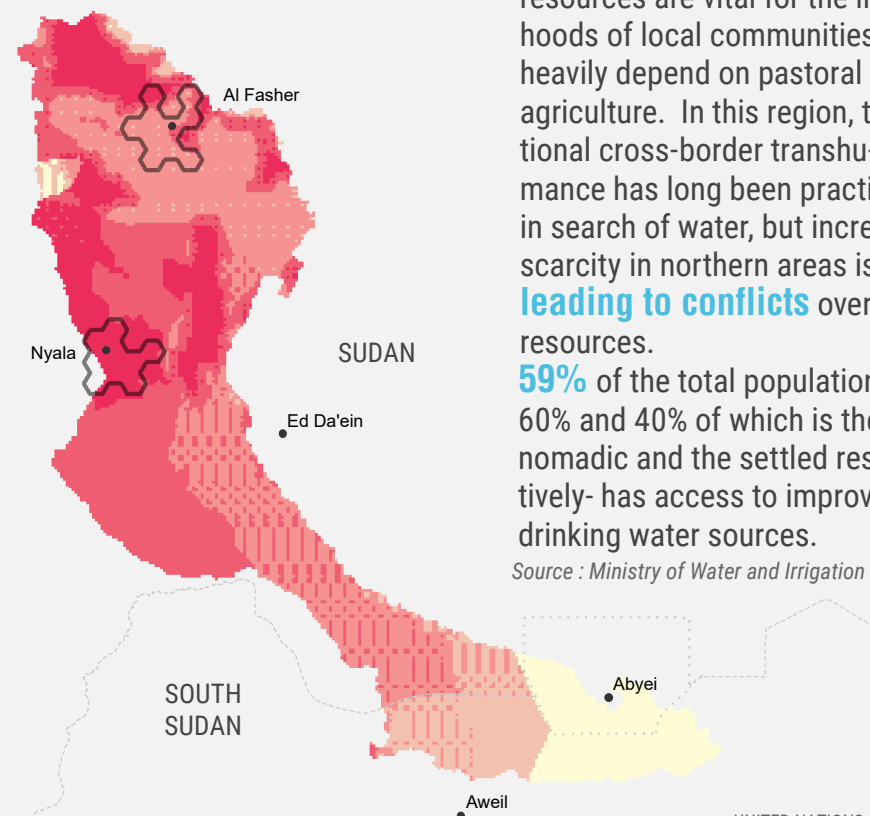
Average water stress in Gelha sub-basin of Nile basin in 2000-2024



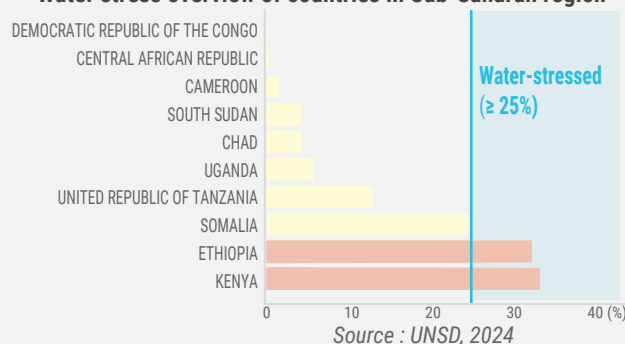
◀ Disaggregating study of water stress at the river basin level improves the understanding of water resource availability: In the **Gelha sub-basin**, water resources are vital for the livelihoods of local communities that heavily depend on pastoral and agriculture. In this region, traditional cross-border transhumance has long been practiced in search of water, but increasing scarcity in northern areas is **leading to conflicts** over resources.

59% of the total population - 60% and 40% of which is the nomadic and the settled respectively- has access to improved drinking water sources.

Source : Ministry of Water and Irrigation Sudan



Water stress overview of countries in Sub-Saharan region



▲ **Sub-Saharan Africa** will experience the most significant increase in water demand by 2050, with projections showing a rise of **163%**, despite currently low levels of water stress in most countries in the region.

▼ In El Geneina, the newly constructed Jabal Sultan Pump Station is connected to 18 new public water posts in West Darfur – providing a community of more than 20,000 people with access to safe water. UNOPS - Atsushi Shibuya, 2017



The boundaries and names shown and the designations used on this map do not imply official endorsement or acceptance by the United Nations. Final boundary between the Republic of Sudan and the Republic of South Sudan has not yet been determined. Final status of the Abyei area is not yet determined.