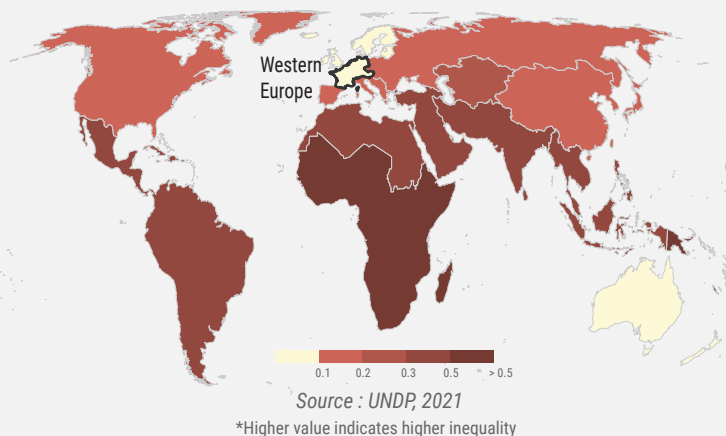




Undertake reforms to give women equal rights to economic resources, as well as access to ownership and control over land and other forms of property

Percentage of agricultural land area managed by women in Western Europe, 2020

Global Gender Inequality Index (GII) value* by sub-region



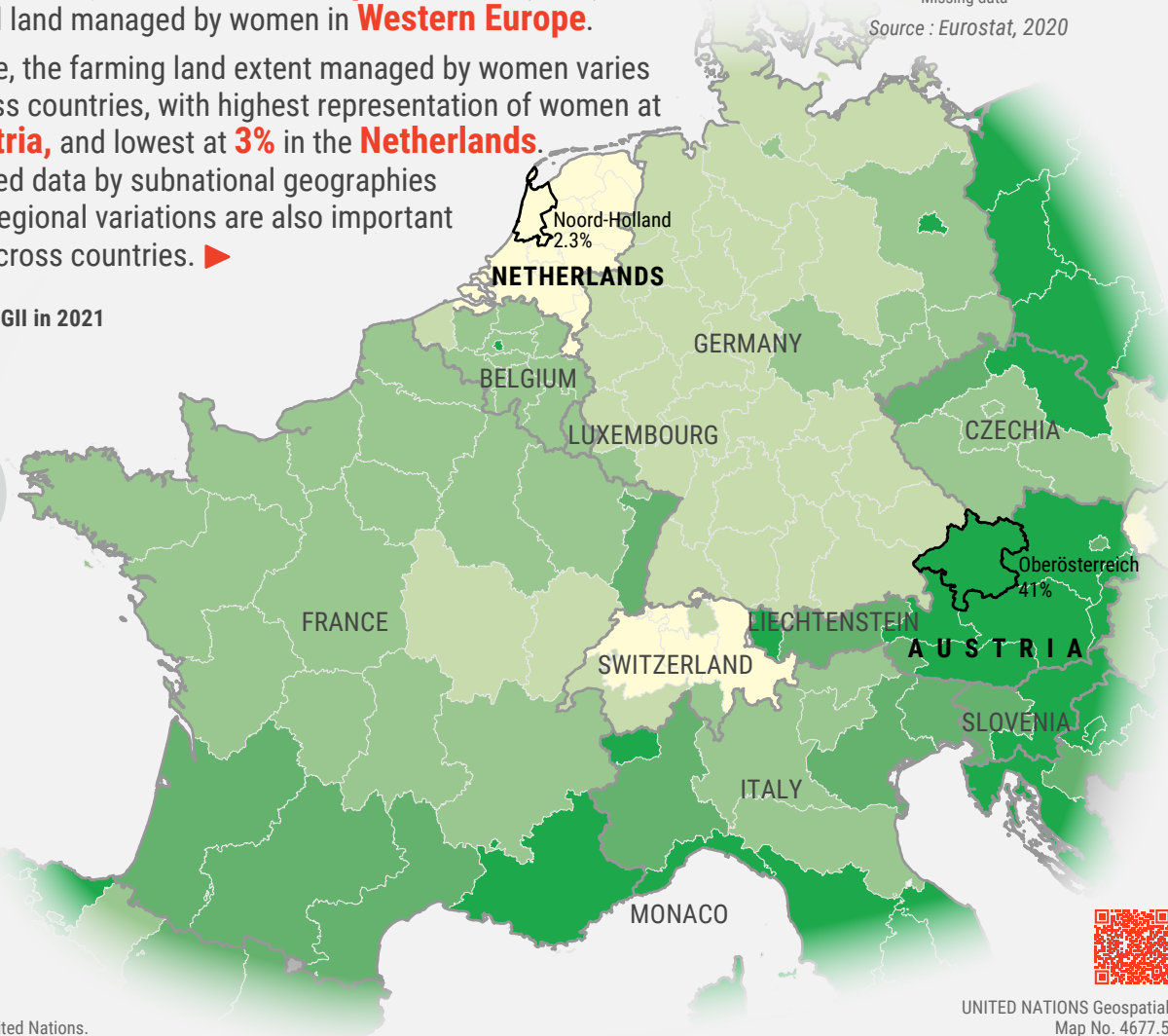
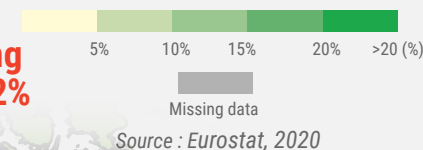
◀ In 2021, the global Gender Inequality Index (GII) value indicates Europe is a leading region for equal rights to women.

However, in specific sectors, the gap is still wide, with only **30%** of the **farming land extent** managed by women in the **European Union** (2020), and only **12%** of the agricultural land managed by women in **Western Europe**.

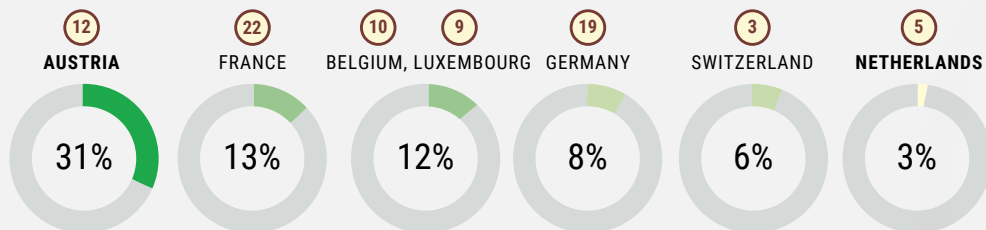
In Western Europe, the farming land extent managed by women varies greatly across countries, with highest representation of women at **31%** in **Austria**, and lowest at **3%** in the **Netherlands**.

Disaggregated data by subnational geographies shows that regional variations are also important within and across countries. ▶

Agricultural land area managed by women in Western Europe, 2020



Agricultural land area managed by women in countries of Western Europe in 2020 and their rank of GII in 2021



Agricultural land area managed by gender

Female Male

Source : Eurostat, 2020

#

Rank** of GII

**Higher rank indicates higher equality

Source : UNDP, 2021



◀ The Innovation Award for Women Farmers is a competition, developed by Copa-Cogeca, for active women farmers and entrepreneurs in Europe. It showcases innovative approaches and solutions taken by women every year all across Europe.
OPA/COGCEA, 2016

