



TAKE URGENT ACTION TO COMBAT CLIMATE CHANGE

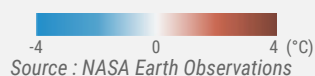
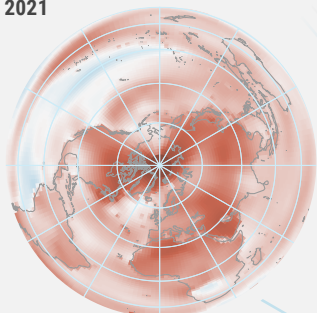
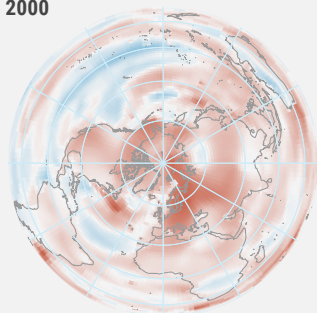
Integrate climate change measures into national policies, strategies and planning

Change of Arctic ice sheet extent over 40 years, 1979 - 2022

Global surface temperature anomaly over 20 years (Base period : 1951 - 1980)

2000

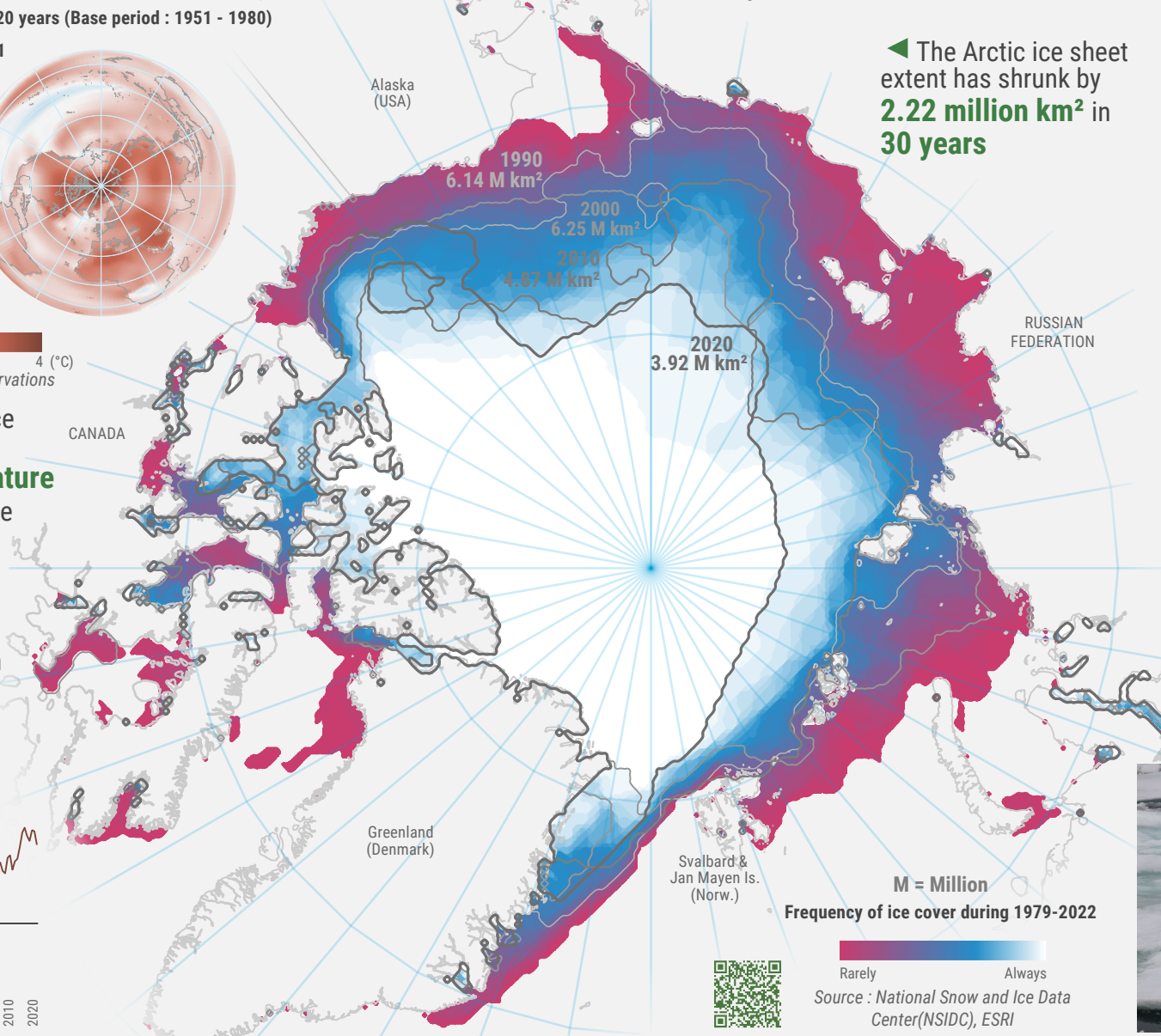
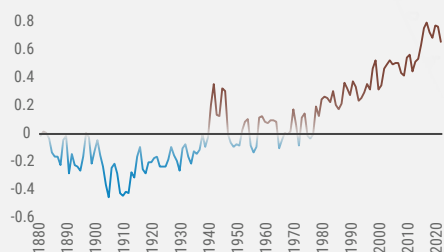
2021



▲ Comparing the global surface temperature in 2000 and 2021 shows a **significant temperature increase**, especially around the **Arctic Sea**

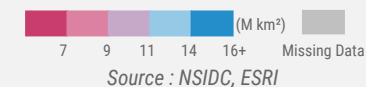
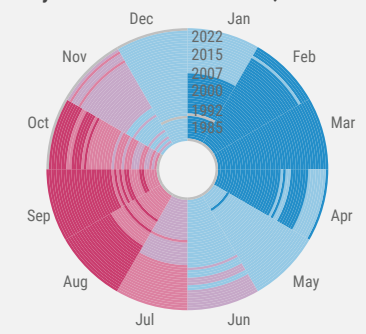
▼ In **2020**, the global ocean surface temperature was **0.76°C warmer** than the 20th century baseline temperature

Global ocean temperature anomalies (Base period : 1901 - 2000)
Source : National Oceanic and Atmospheric Administration (NOAA)



◀ The Arctic ice sheet extent has shrunk by **2.22 million km²** in **30 years**

Monthly mean of ice sheet extent, 1979 - 2022



▲ **September** has the **smallest ice sheet** on Arctic Sea (September is the month after summer's melting and before winter's refreezing)
The average extent of the Arctic ice sheet has **decreased** since **1990s**

▼ Polar bear stands on the melting ice due to the climate change WMO Photo - Karolin Eichier

