



# Global Warming and Agriculture

William R. Cline

Center for Global Development and

Peterson Institute for International Economics

(percent and millions of 2005 dollars)

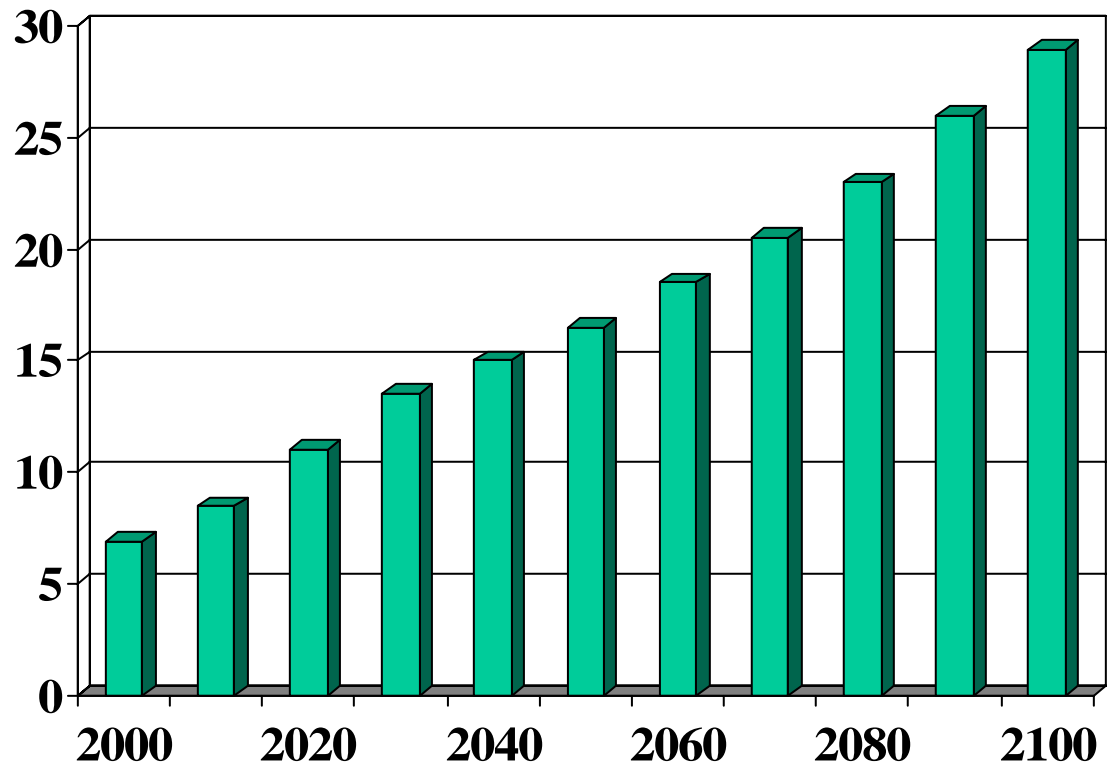
Country/region	Dryland (without carbon fertilization)	Irrigated (without carbon fertilization)	Irrigated share of cropland		Weighted average		Base output (millions of dollars)
			Area	Value	Without carbon fertilization	With carbon fertilization	
Nigeria	-66.6	6.3	7.0	27.2	-46.7	-38.7	6,657
Angola	-26.3	-26.2	7.0	27.2	-26.3	-15.2	1,188
Burkina Faso	-16.5	20.9	0.0	0.0	-16.5	-4.0	1,298
Cameroon	-19.1	-31.6	2.0	9.2	-20.3	-8.3	5,499
Democratic Republic of the Congo	-5.5	23.2	1.0	4.8	-4.1	10.2	3,292
Egypt	-50.1	53.5	100.0	100.0	53.5	76.5	13,189
Ethiopia	-31.4	-53.9	0.0	0.0	-31.4	-21.2	2,748
Ghana	-3.0	-41.6	3.0	13.3	-8.2	5.6	2,748
Ivory Coast	-3.6	-74.2	1.0	4.8	-7.0	7.0	3,574
Kenya	8.3	20.8	19.0	53.7	15.0	32.3	2,302
Madagascar	-20.5	-16.4	1.0	4.8	-20.3	-8.3	1,587
Malawi	-33.6	-10.2	2.0	9.2	-31.5	-21.2	651
Mali	-100.0	-11.9	31.0	69.0	-39.0	-29.9	1,645
Morocco	-43.7	-5.5	2.0	9.2	-40.1	-31.1	7,436
Mozambique	-30.6	2.8	5.0	20.7	-23.6	-12.1	1,122
Niger	-100.0	36.3	15.0	46.6	-36.1	-26.5	1,094
Nigeria	-13.7	-1.8	3.0	13.3	-12.1	1.1	15,180
Other Equatorial Africa	1.6	-22.0	1.0	4.8	0.5	15.6	1,429
Other Horn of Africa	-100.0	7.1	1.0	4.8	-94.8	-94.1	20
Other Southern Africa	-52.5	-53.5	1.0	4.8	-52.5	-45.4	619
Other West Africa	-15.6	-100.0	5.0	20.7	-33.2	-23.2	1,832
Senegal	-100.0	-55.2	10.0	35.5	-84.0	-81.6	1,105
South Africa	-51.5	-39.6	11.0	38.0	-47.0	-39.0	6,395
Sudan	-100.0	9.5	4.0	17.1	-81.1	-78.3	6,944
Tanzania	-16.3	-1.1	0.0	0.0	-16.3	-3.7	4,629
Uganda	-1.7	-4.8	6.0	24.0	-2.5	12.1	2,016
Zambia	-48.5	-37.7	3.0	13.3	-47.1	-39.1	1,000
Zimbabwe	-52.4	-15.7	5.0	20.7	-44.7	-36.4	3,018
Total					-18.6	-6.3	100,215
Excluding Egypt					-29.5	-18.9	
Median					-28.9	-18.2	

Sources: Table 5.3 using non-Egypt irrigated model B except for Egypt; World Bank (2006).

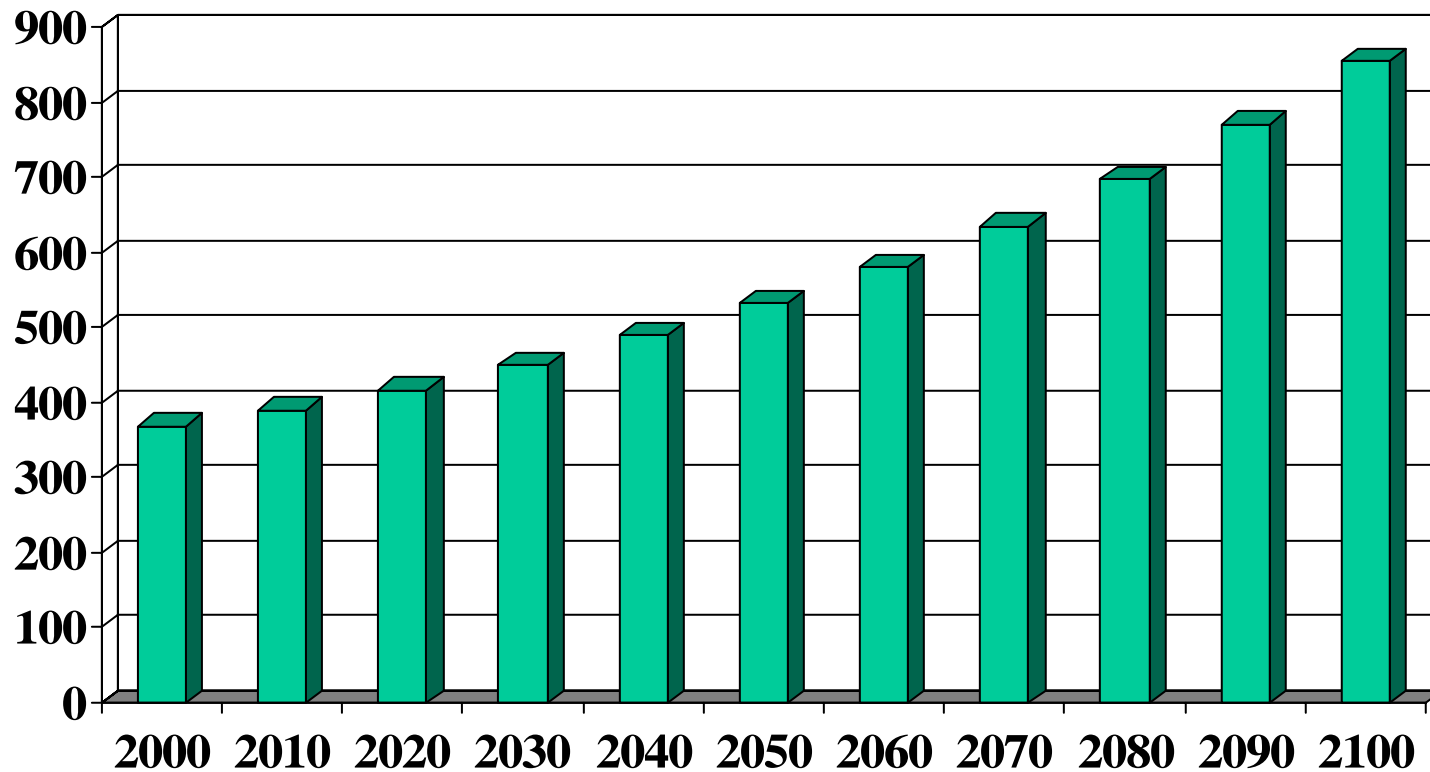
Model	Resolution	Warming for 2xCO <sub>2</sub> (°C)
German Climate Research Centre	2.8° x 2.8°	2.6
UK Hadley Centre	2.5° x 3.75°	3.0
Australian Commonwealth Scientif. & Indust. Res. Org	3.2° x 5.6°	3.7
Canadian Centre for Climate Modeling	3.7° x 3.7°	3.6
US Geophysical Fluid Dynamics Laboratory	2.25° x 3.75°	3.4
Japanese Centre for Climate Research Studies (f)	5.6° x 5.6°	3.5

# Baseline CO2 Emissions (A2)

(billion tons carbon equivalent)



# Baseline CO2 atmospheric concentration (parts per million)



# Converting Grid Sizes

(resolution and # of land-based cells)

	Resolution	# of cells
IPCC Actuals, 1961-90	1° x 1°	22,156
Typical climate model	3° x 4°	1,836
Standardized grid (this study)	2° x 3°	3,672

# Global Climate Change by 2080s

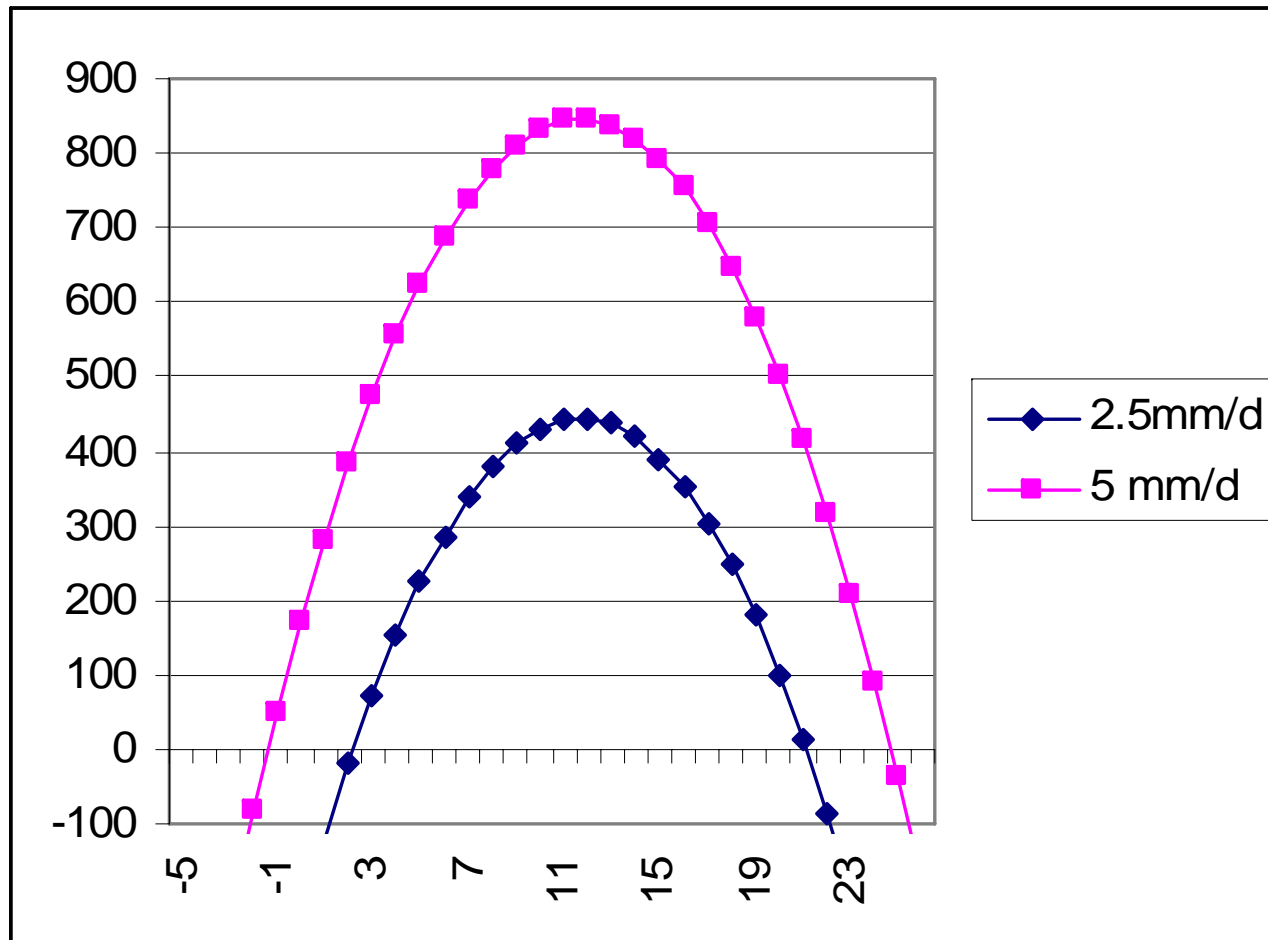
	Land area weights	Farm area weights
Temperature (°C) (base)	13.15	16.2
Precipitation (mm/d) “	2.20	2.44
Change by 2080s:		
Temperature (°C)	4.95	4.43
Precipitation (mm/d)	0.13	0.07
Precipitation (percent)	5.9%	2.9%

# Agricultural Impact Models Used

- Crop Models (18 countries): Rosenzweig-Iglesias
- “Ricardian Models:
  - Mendelsohn-Schlesinger based on US
  - World Bank for Africa, Latin America
  - Mendelsohn-Dinar-Sanghi for India



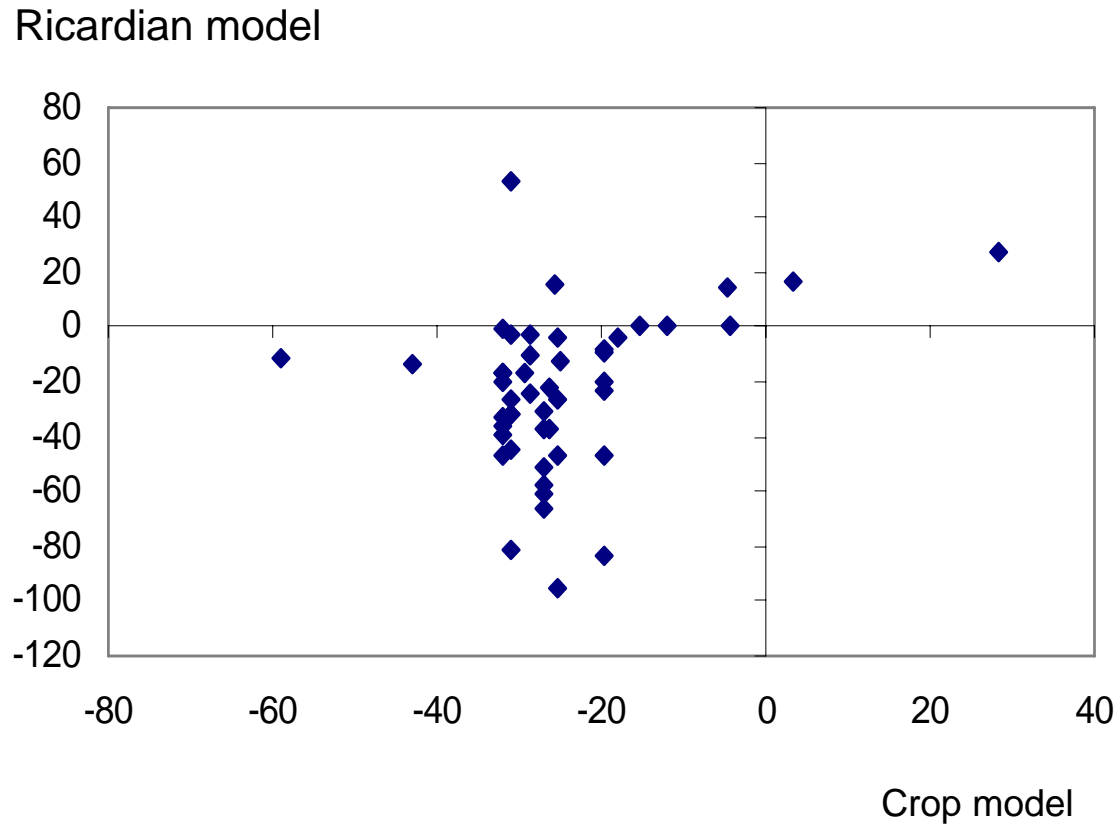
# Output per hectare at alternative average temperatures (\$ and °C)



# How Much Carbon Fertilization?

- Carbon dioxide is an input into photosynthesis
- Wheat, rice, soybeans, cotton (C3): more response; corn, sugarcane (C4): less
- Early laboratory experiments overstated effect. Open field (FACE) results now show lower impact.
- Estimate: 15% yield boost for 735 ppm

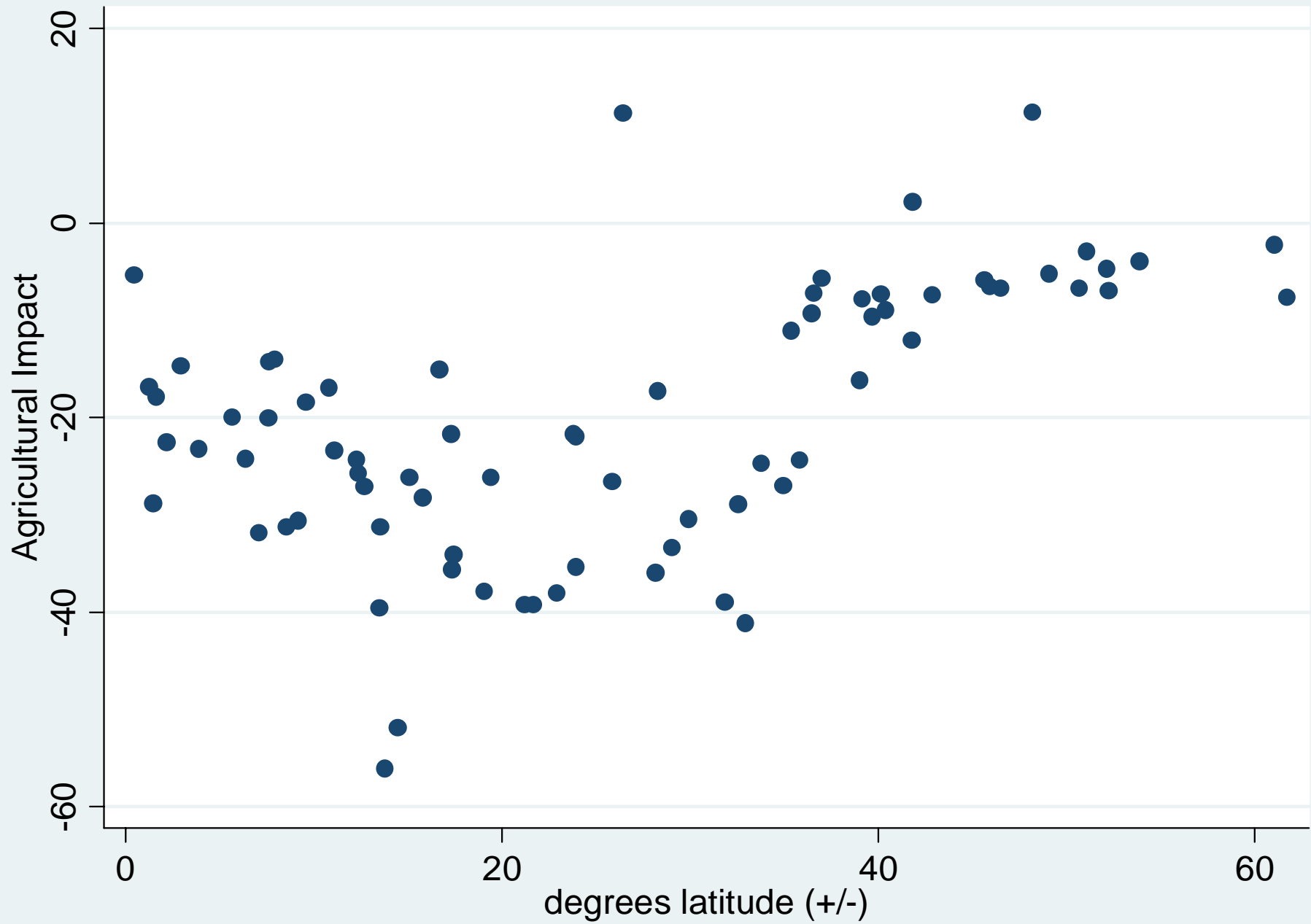
**Figure 5.4 Percentage change in agricultural capacity by the 2080s in 47 countries and regions (without carbon fertilization)**



# Results, selected countries

(percent change in agricultural productivity)

	Ricardian	Crop Model	Weighted Avg	
			w/oCF	w/CF
Argentina	-4	-18.1	-11.1	2.2
Brazil	-5.1	-28.7	-16.9	-4.4
US	4.7	-16.5	-5.9	8.0
SW plains	-11.1	-59.0	-35.1	-25.0
India	-49.2	-27.0	-38.1	-28.8
China	3.8	-12.6	-7.2	6.8
S. central	-18.8	-12.6	-14.6	-1.8

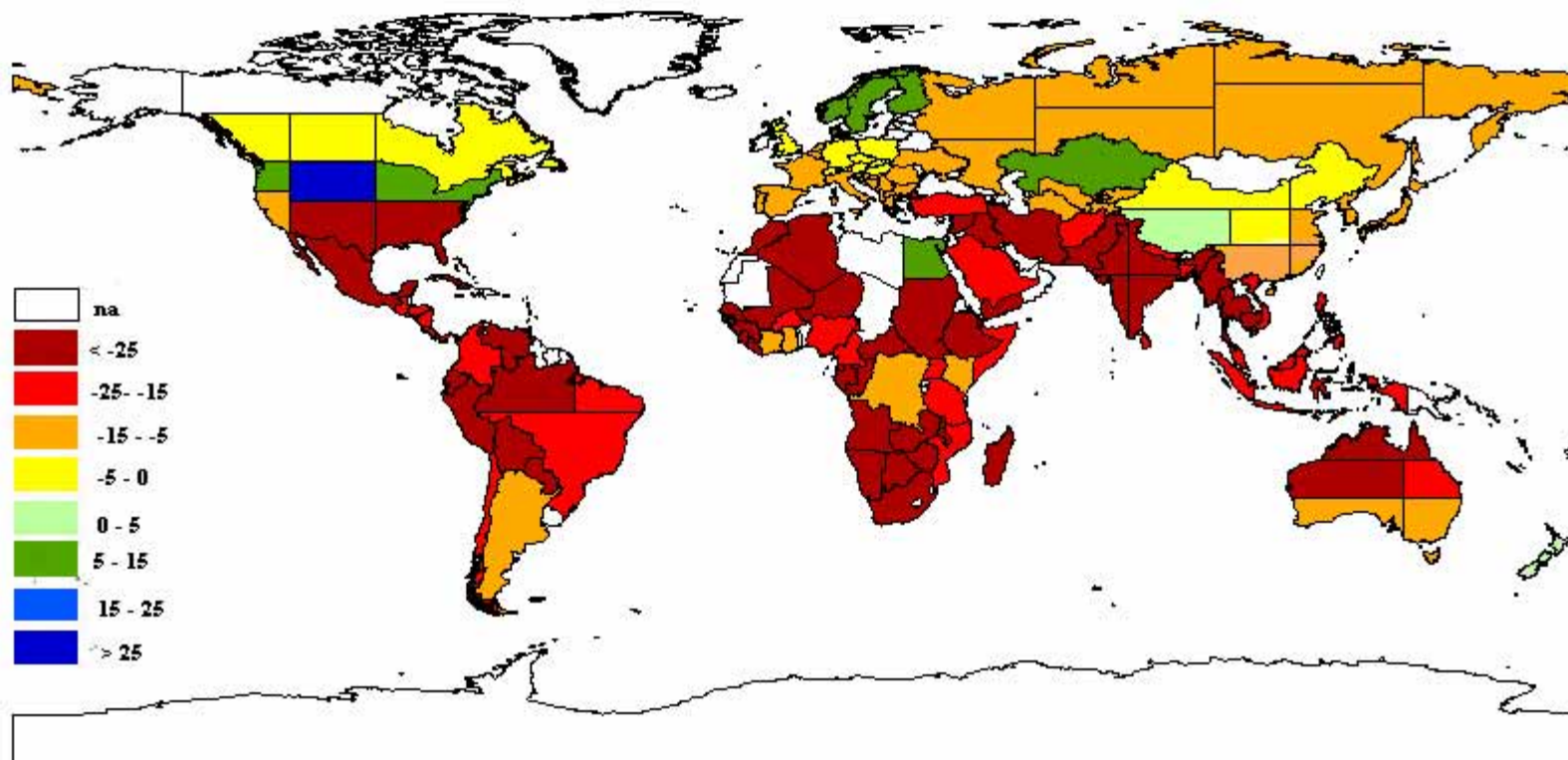


# Results, selected countries

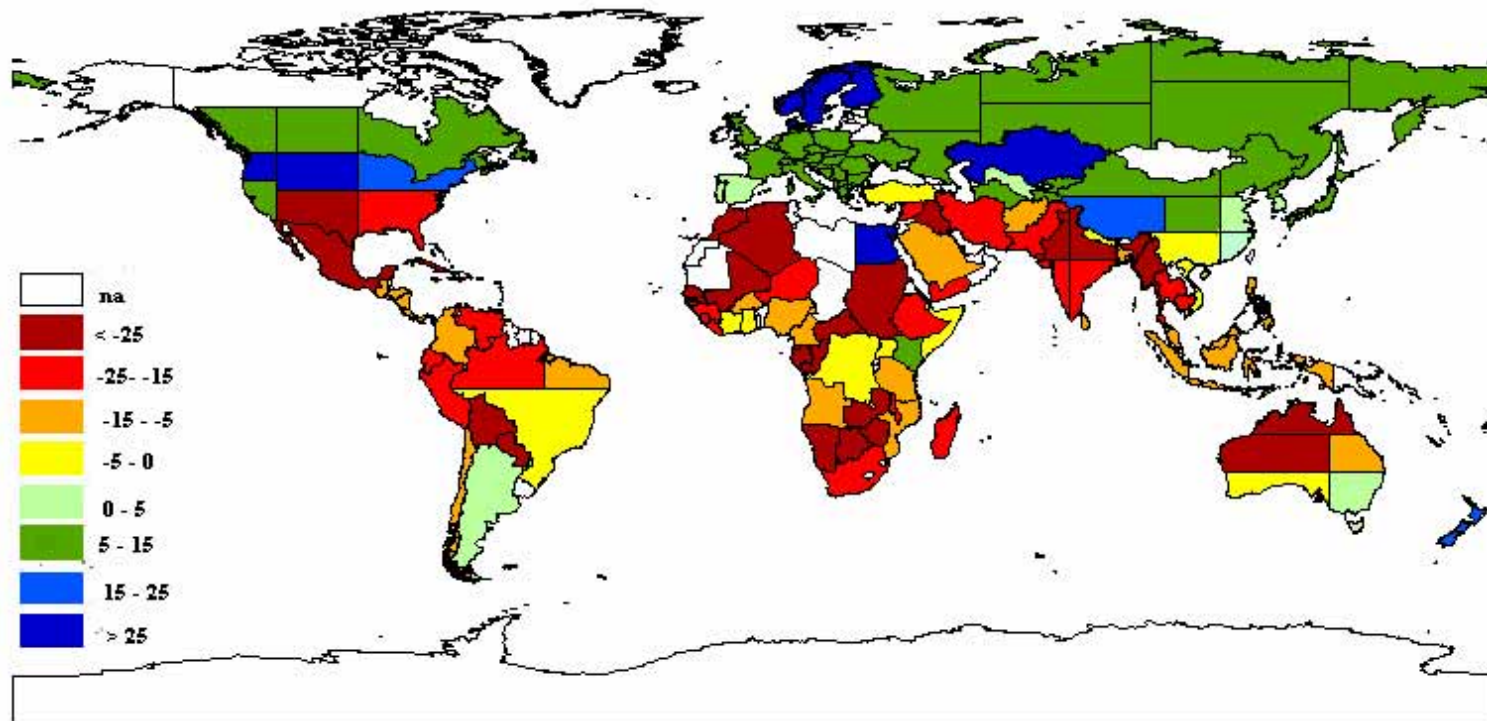
(percent change in agricultural productivity)

	Ricardian	Crop Model	Wtd Average	
			w/oCF	w/CF
Mexico	-35.9	-35.1	-35.4	-25.7
Nigeria	-12.1	-24.9	-18.5	-6.3
South Africa	-47.0	-19.8	-33.4	-23.4
Ethiopia	-31.4	-31.1	-31.3	-20.9
Canada	0	-4.3	-2.2	12.5
Spain	-4.5	-11.1	-8.9	4.8
Germany	13.8	-11.1	-2.9	11.7

# Impact on Agricultural Productivity without Carbon Fertilization (percent)



# Impact on Agricultural Productivity with Carbon Fertilization (percent)





# Results by Region

(% change in agricultural productivity)

	w/o CF	w/ CF
World	-15.9	-3.2
Industrial countries	-6.3	7.7
Developing countries exc. Eur.	-21.0	-9.1
Median	-25.8	-14.7
Africa	-27.5	-16.6
Middle East –North Africa	-21.2	-9.4
Asia	-19.3	-7.2
Latin America	-24.3	-12.9

# Technological Change is No Panacea

	2004	2085
Population (billion)      medium	6.5	10.5
high	6.5	14.7
Per capita ppp income (\$)	6,330	14,000
Per capita food consumption (index)	100	163
Food demand (index)	100	260-370
Food supply: technology (index)	100	350
Diversion to energy crops (%)	1	30
Food supply: combined (index)	100	245



# GLOBAL WARMING and AGRICULTURE

Impact Estimates by Country

William R. Cline

CENTER FOR GLOBAL DEVELOPMENT  
PETERSON INSTITUTE FOR INTERNATIONAL ECONOMICS