



“Advancing human security through knowledge-based approaches to reducing vulnerability and environmental risks“



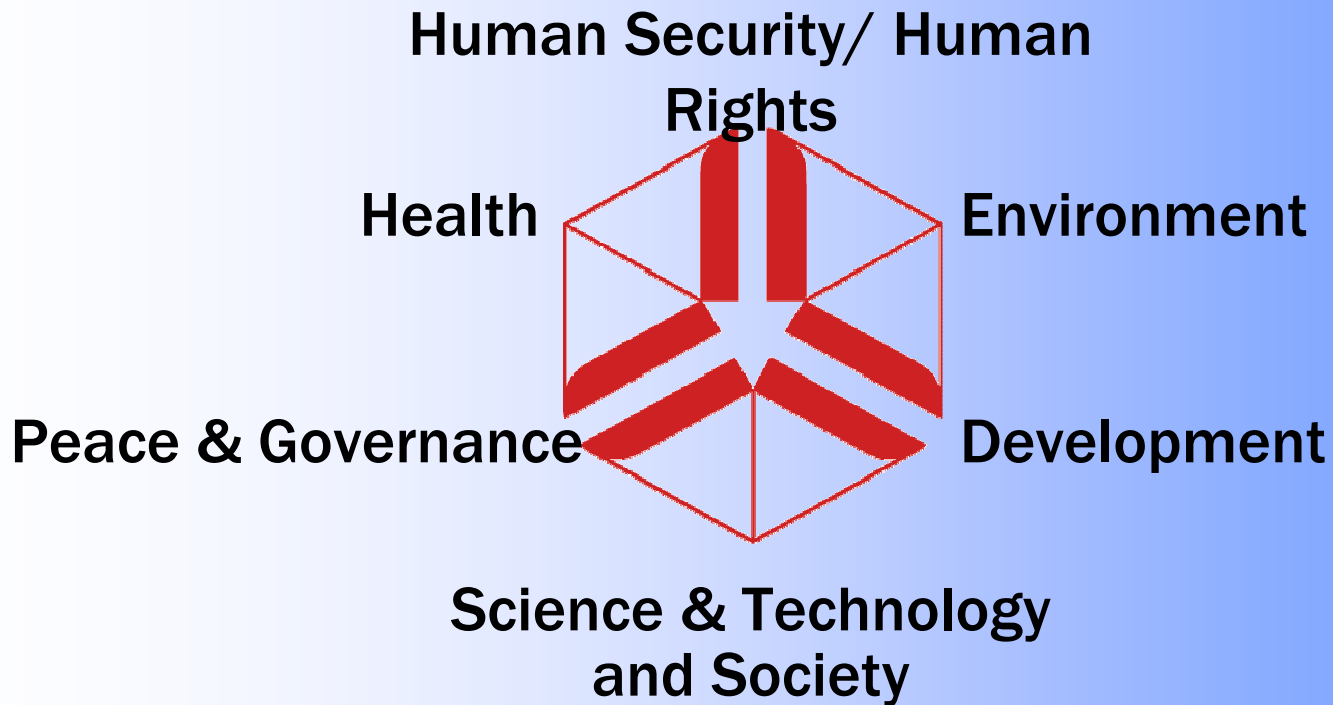
**UNITED NATIONS
UNIVERSITY**

UNU-EHS

Institute for Environment
and Human Security



The UN University (UNU)



United Nations University
Institute for Environment & Human Security

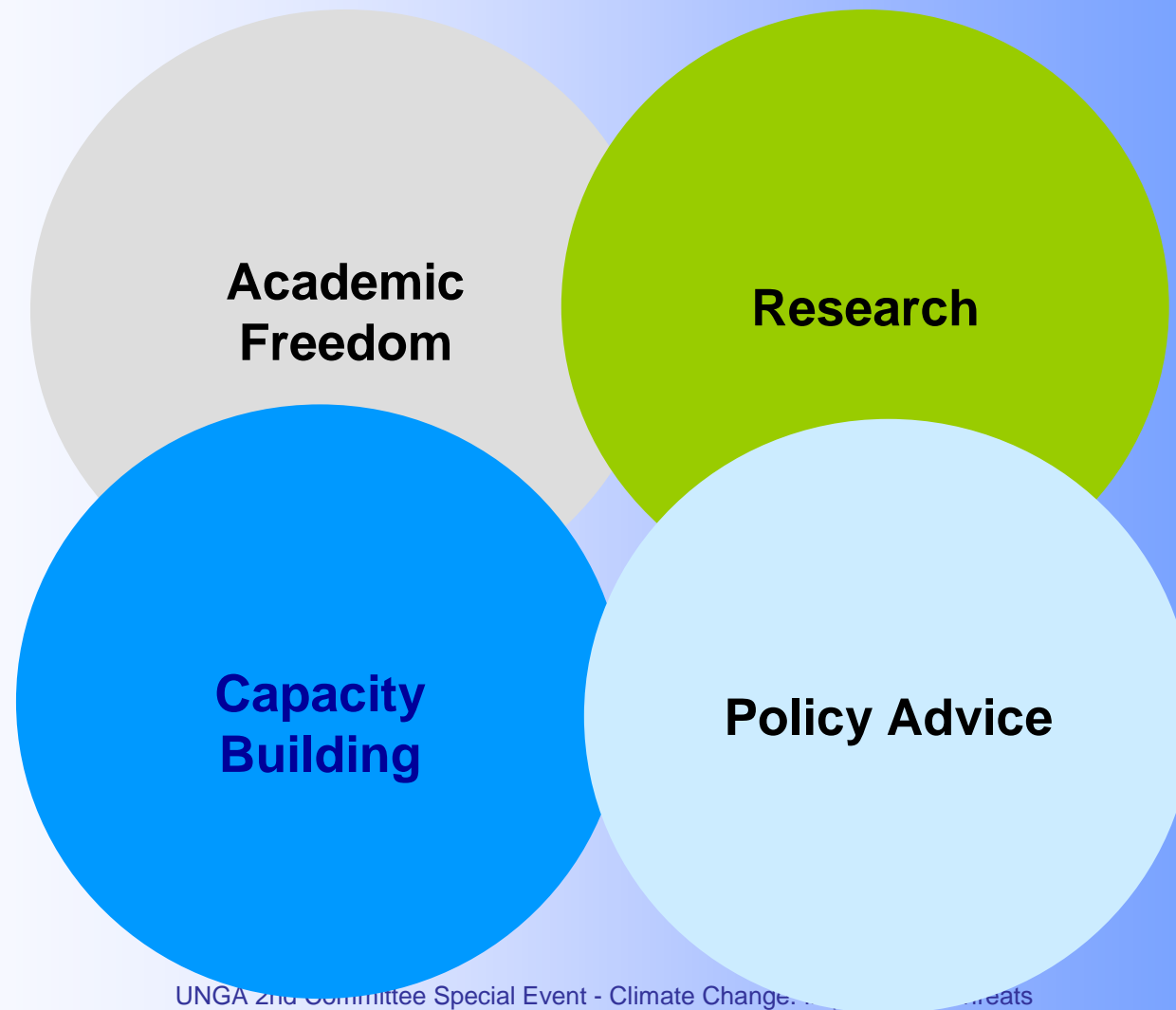
UNGA 2nd Committee Special Event - Climate Change: Impacts and Threats
19 October 2009, New York City

warner@ehs.unu.edu



UNU brings research to policy processes

United Nations University
Institute for Environment & Human Security



UNGA 2nd Committee Special Event - Climate Change and Disaster Preparedness
19 October 2009, New York City



The Climate Change - Migration Nexus

Dr. Koko Warner

United Nations University Institute for Environment and
Human Security (UNU-EHS).

Bonn, Germany

UNGA 2nd Committee Special Event - Climate Change: Impacts and Threats
19 October 2009, New York City



Introduction

- **Introduce**
 - Policy context: search for solutions to help communities and countries adapt to the negative impacts of climate change
 - First major global attempt to gather evidence about the relationship between environmental change and migration. 23 case studies (European Commission project EACH-FOR).
- **Explain**
 - Some of the questions and findings from in the fieldwork
- **Explore**
 - Directions for future policy dialogue about climate adaptation and human security.



Climate change & migration

- **What will climate change mean for migration?**
 - “In coming decades, climate change will motivate or force millions of people to leave their homes in search of viable livelihoods and safety. Although the precise number of migrants and displaced people may elude science for some time, all available estimates suggest their numbers will be in the tens of millions or more. The mass of people on the move will likely be staggering and surpass any historical antecedent”.
- **Do we know what we need to know?**
 - Given the potential of climate change and other forms of environmental change to profoundly affect human mobility, we know surprisingly little about how these factors interact.
- **How can we unlock the “black box” & understand the dynamics?**
 - A noted scholar suggested recently that despite widespread anecdotal evidence, generalised assumptions and emerging research findings, we still have little empirically grounded knowledge or conceptual understanding of the links between the environmental impacts of climate change and population mobility



Compelling questions

- **Who** has been migrating away from situations of environmental degradation/change;
- **Where** migrants are coming from and where are they going to;
- **Why** people have migrated, and the role of changing environments;
- **How environmental degradation interplays** with other social, economic and political factors when migration decisions are made;
- **What might have prevented people** from migrating in the first place;
- **Why people who remained** in areas of environmental degradation/ change remained in their location while others migrated
- **How the migration activities occurred** (choice of destination, what networks were used to facilitate migration?).
- **The effects of migration** on the area of origin (remittances, community ties, etc.)



EACH FOR

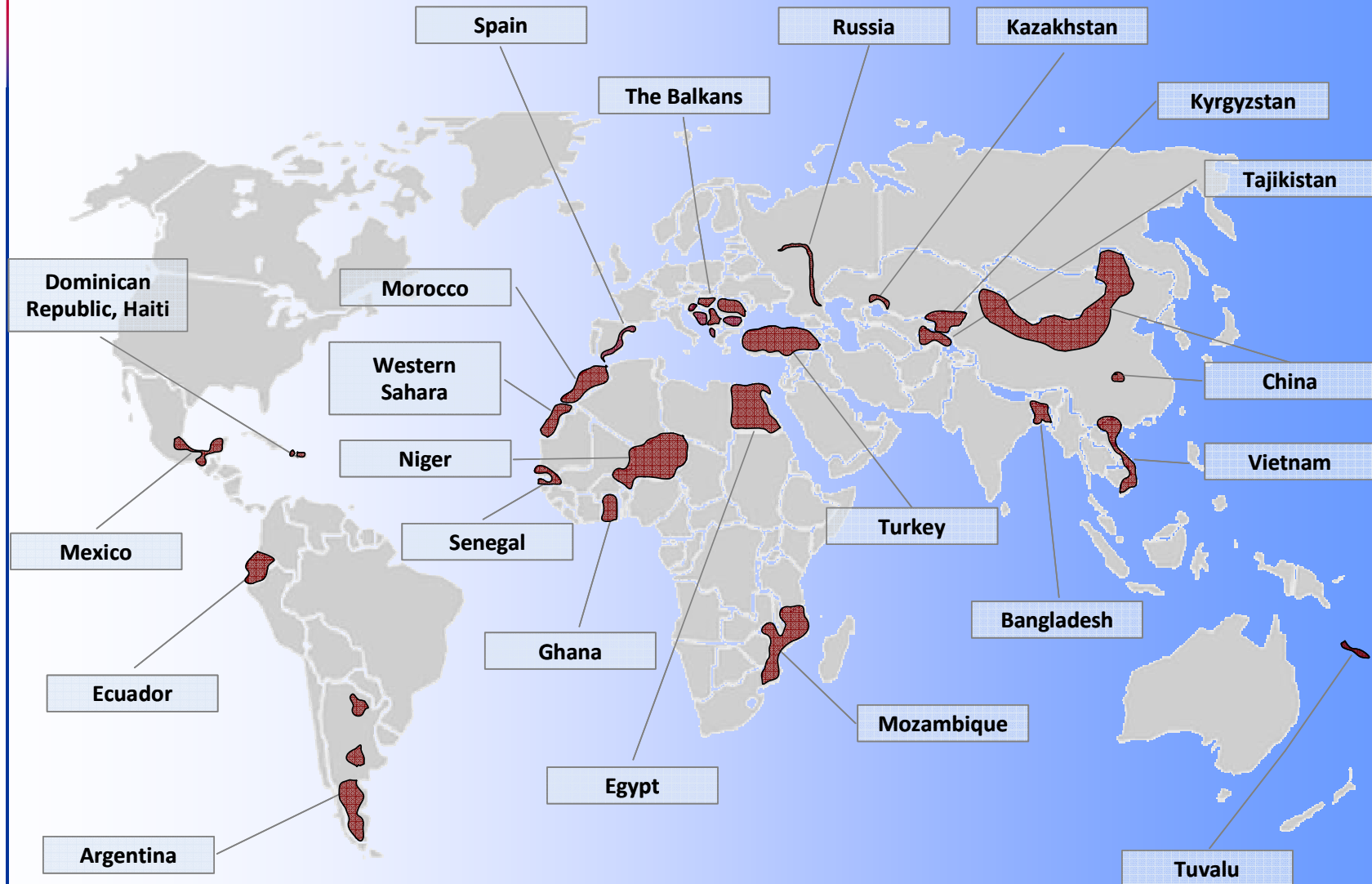
- Environmental Change and Forced Migration Scenarios Project “EACH-FOR” (www.each-for.eu)
- Supported by the European Commission 6th Framework Programme
- 7 partner institutes across Europe involved
- Multidisciplinary approach

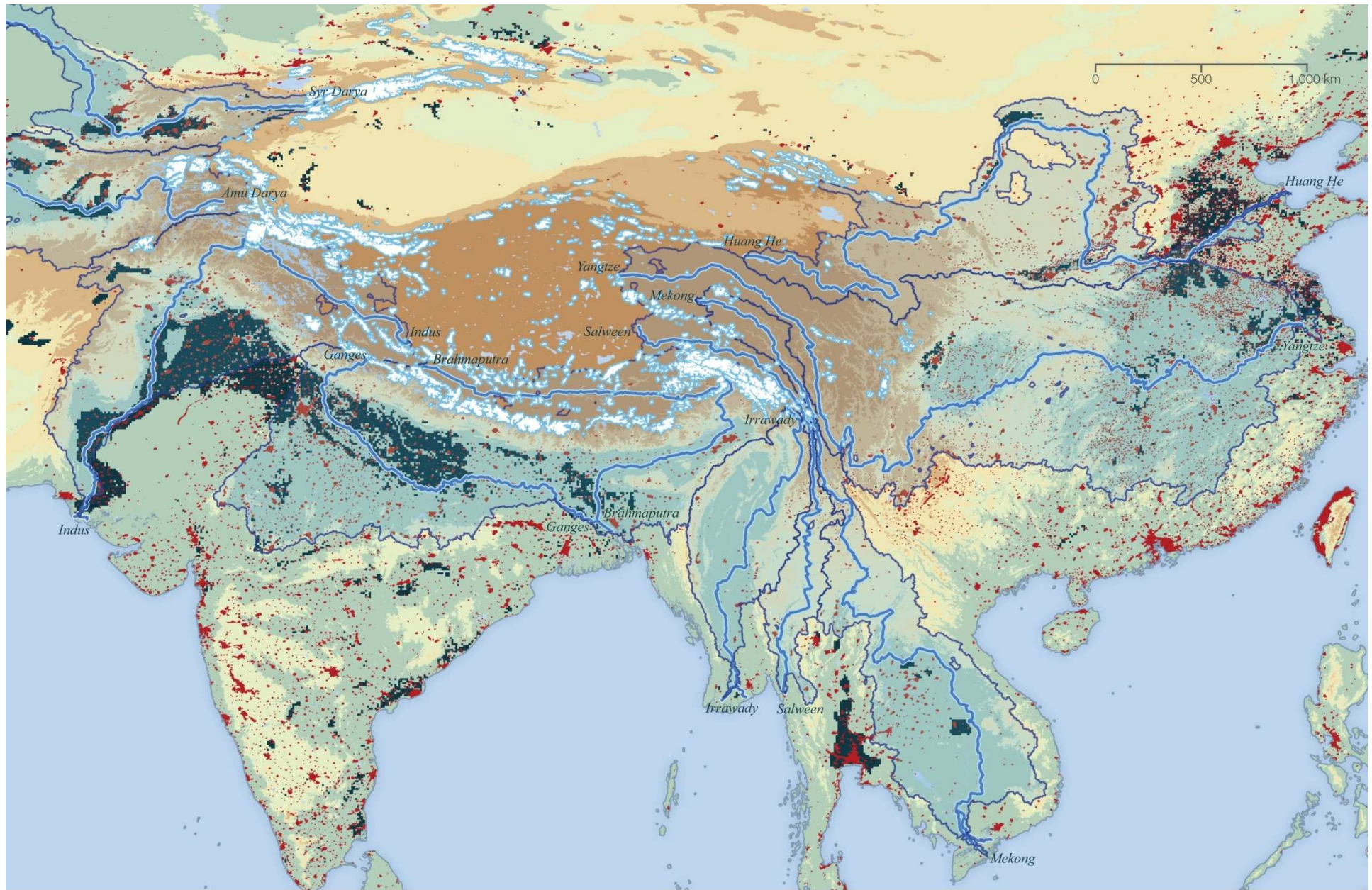
Universities
for Environment & Human Security



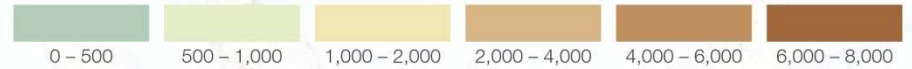


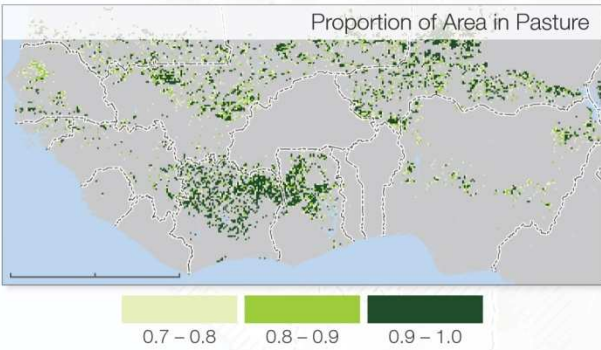
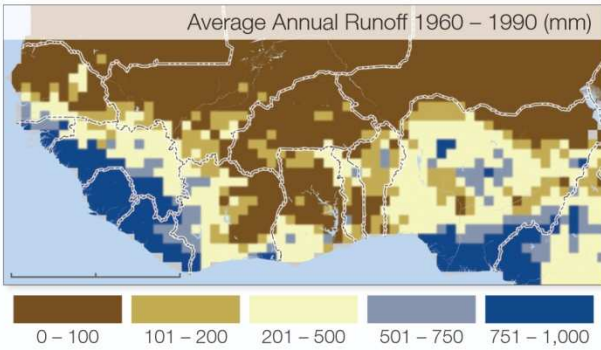
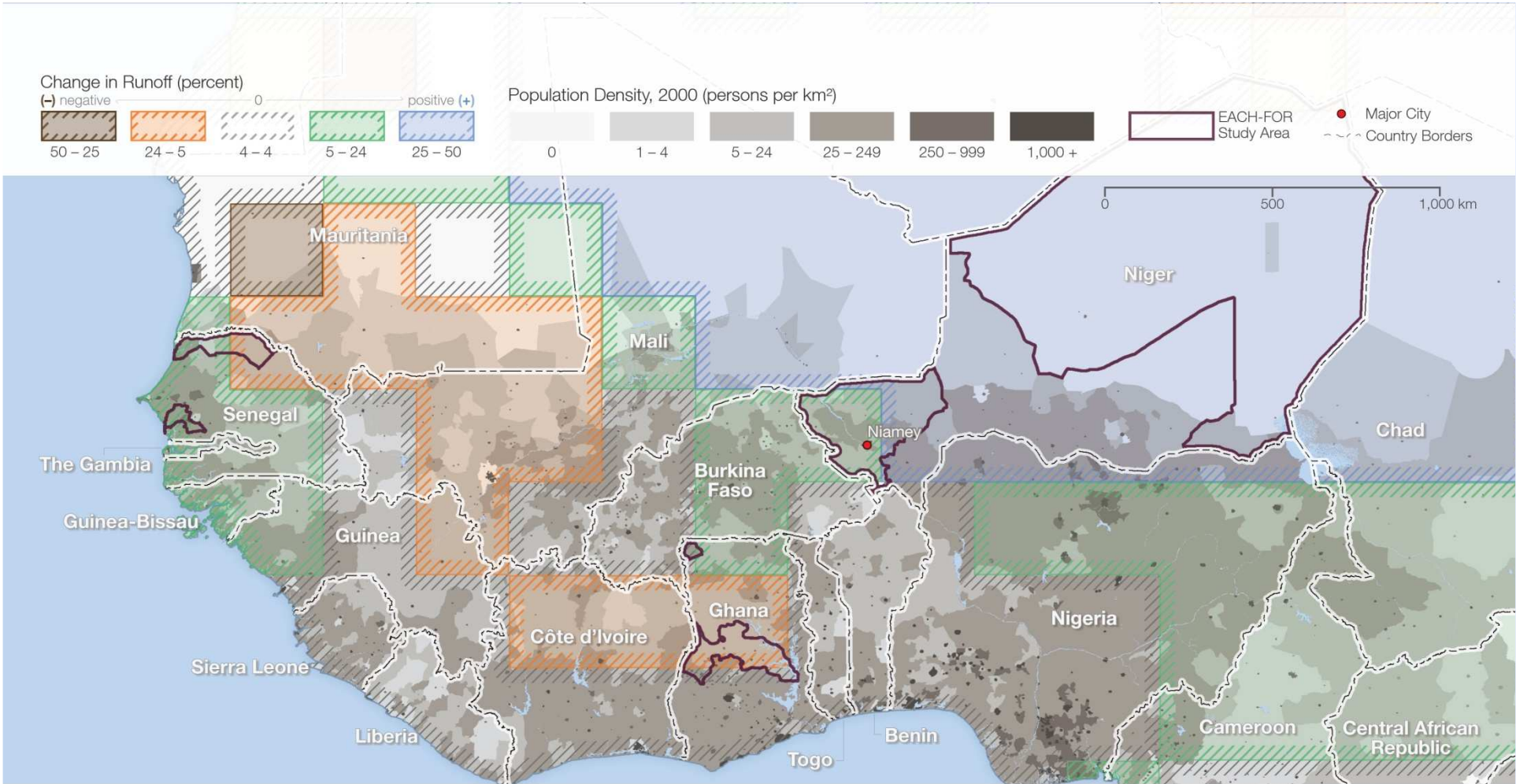
The EACH-FOR Project: Global fieldwork sites

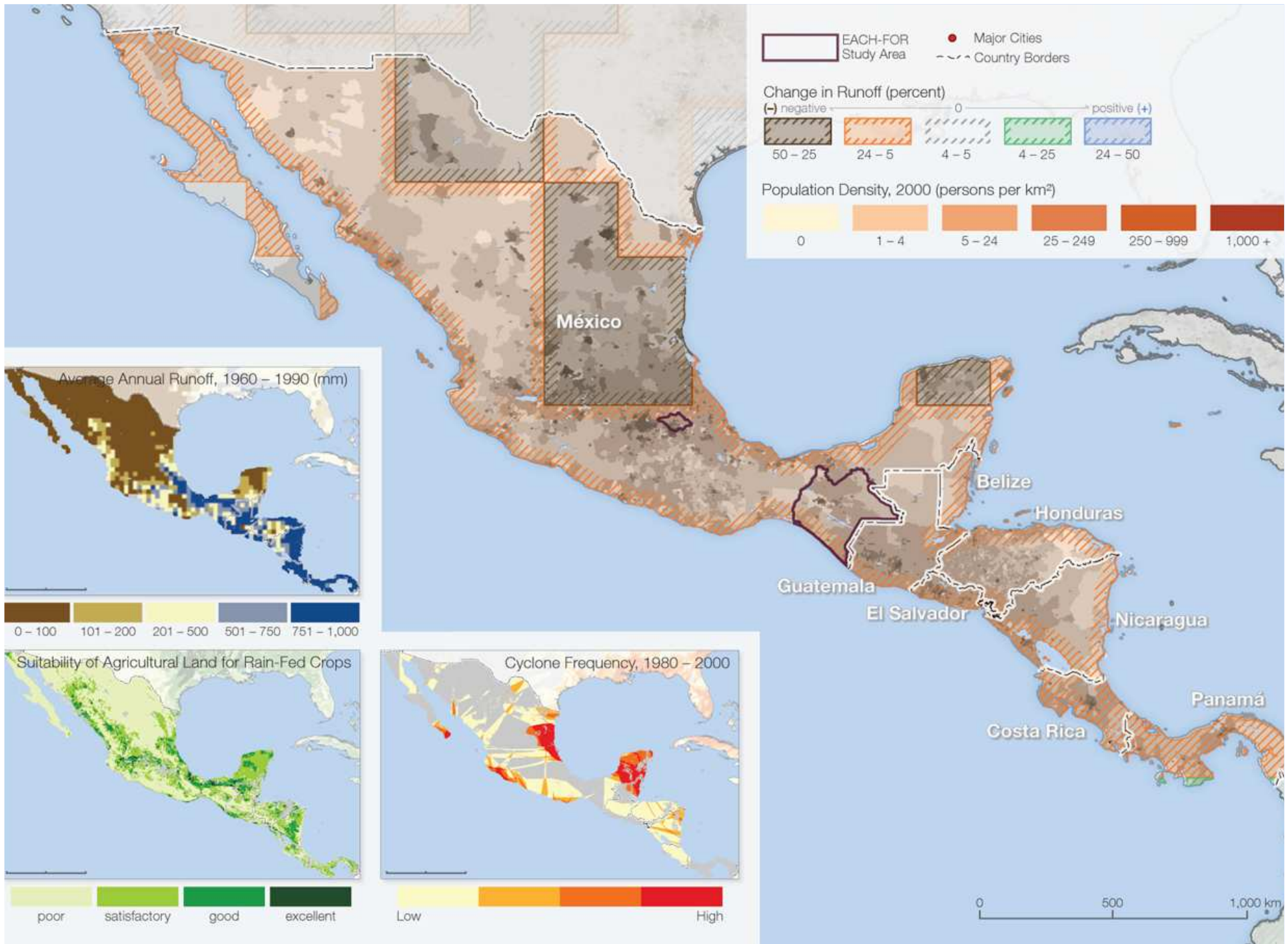


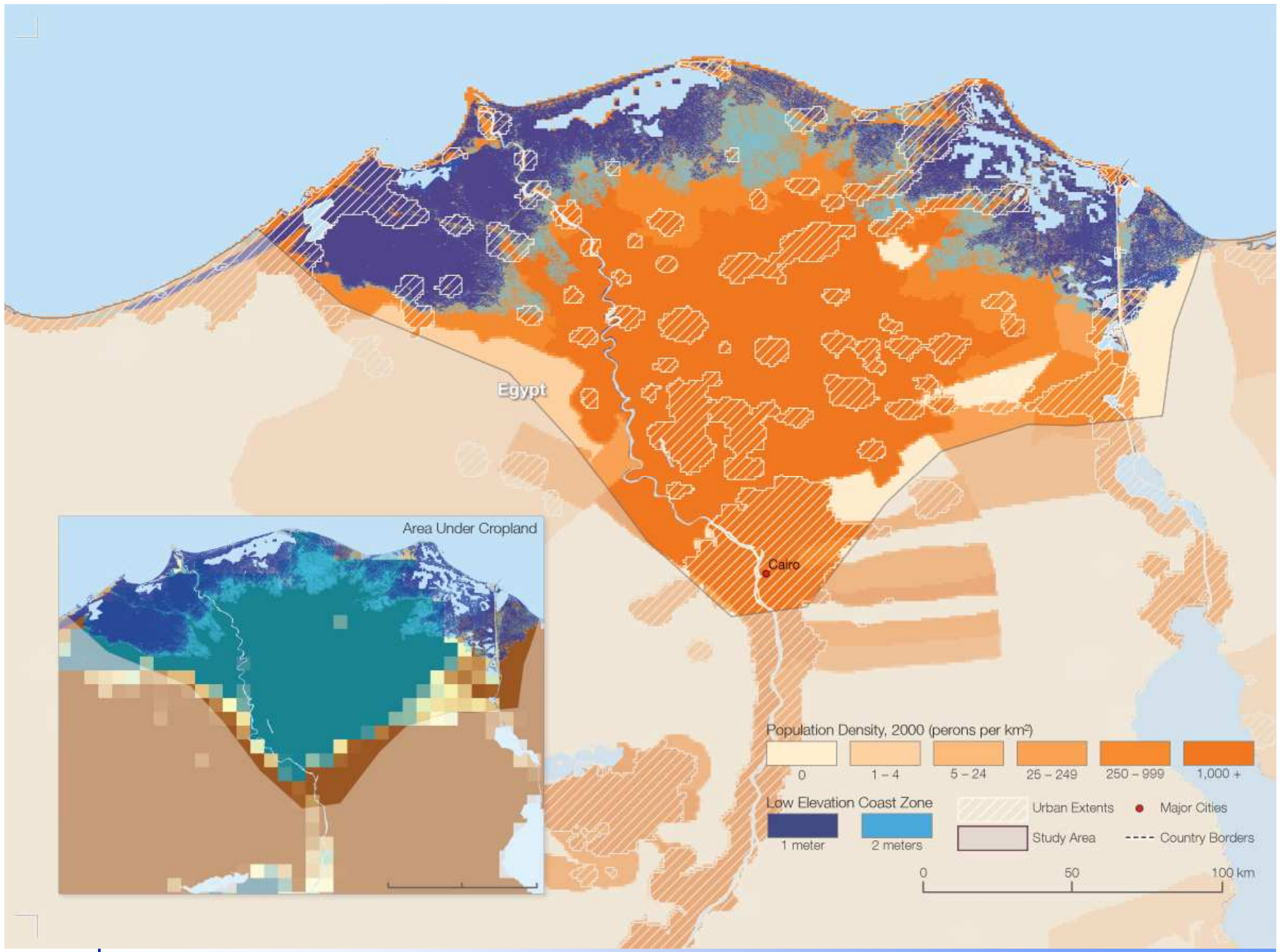


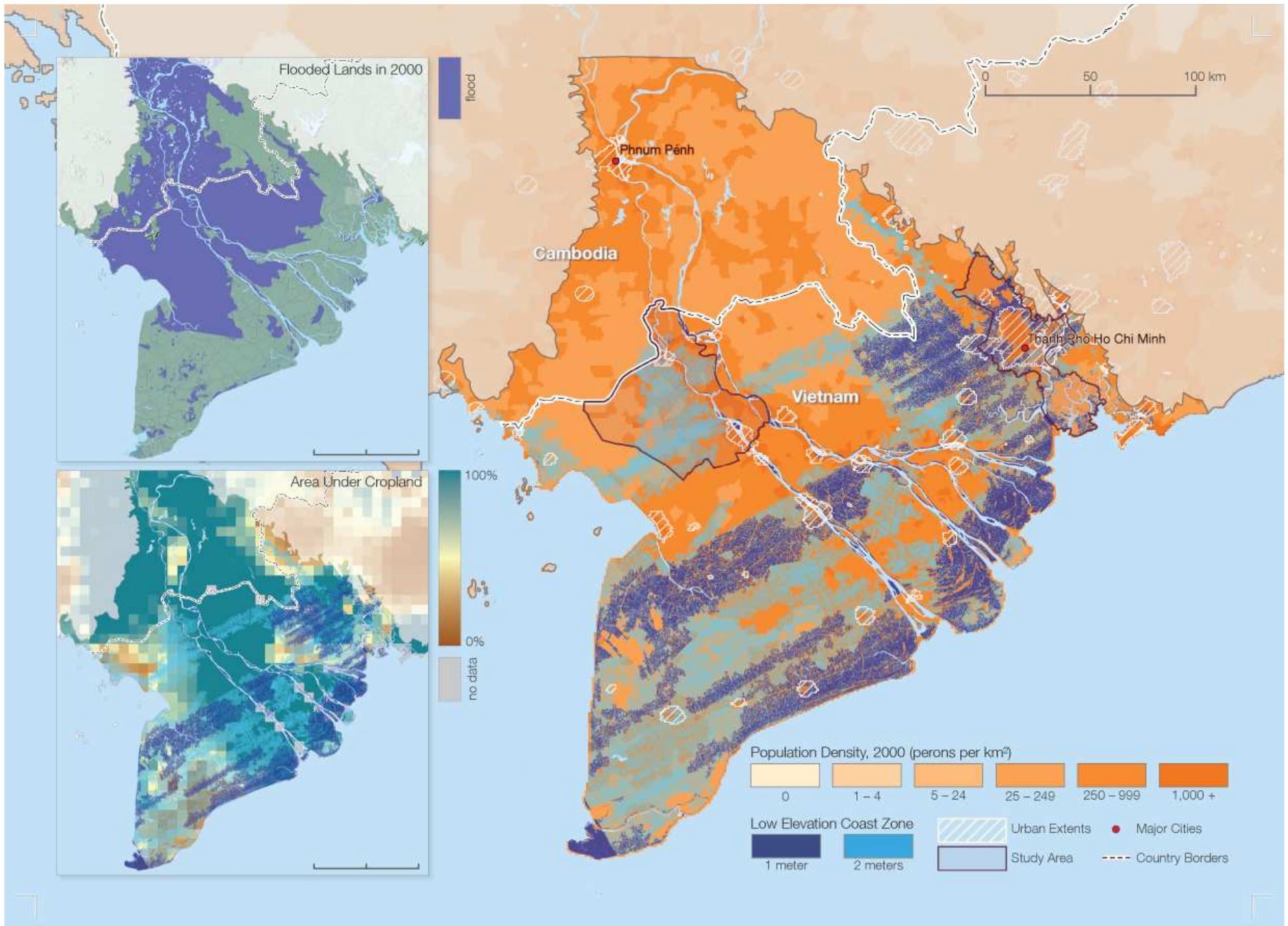
Elevation (meters)

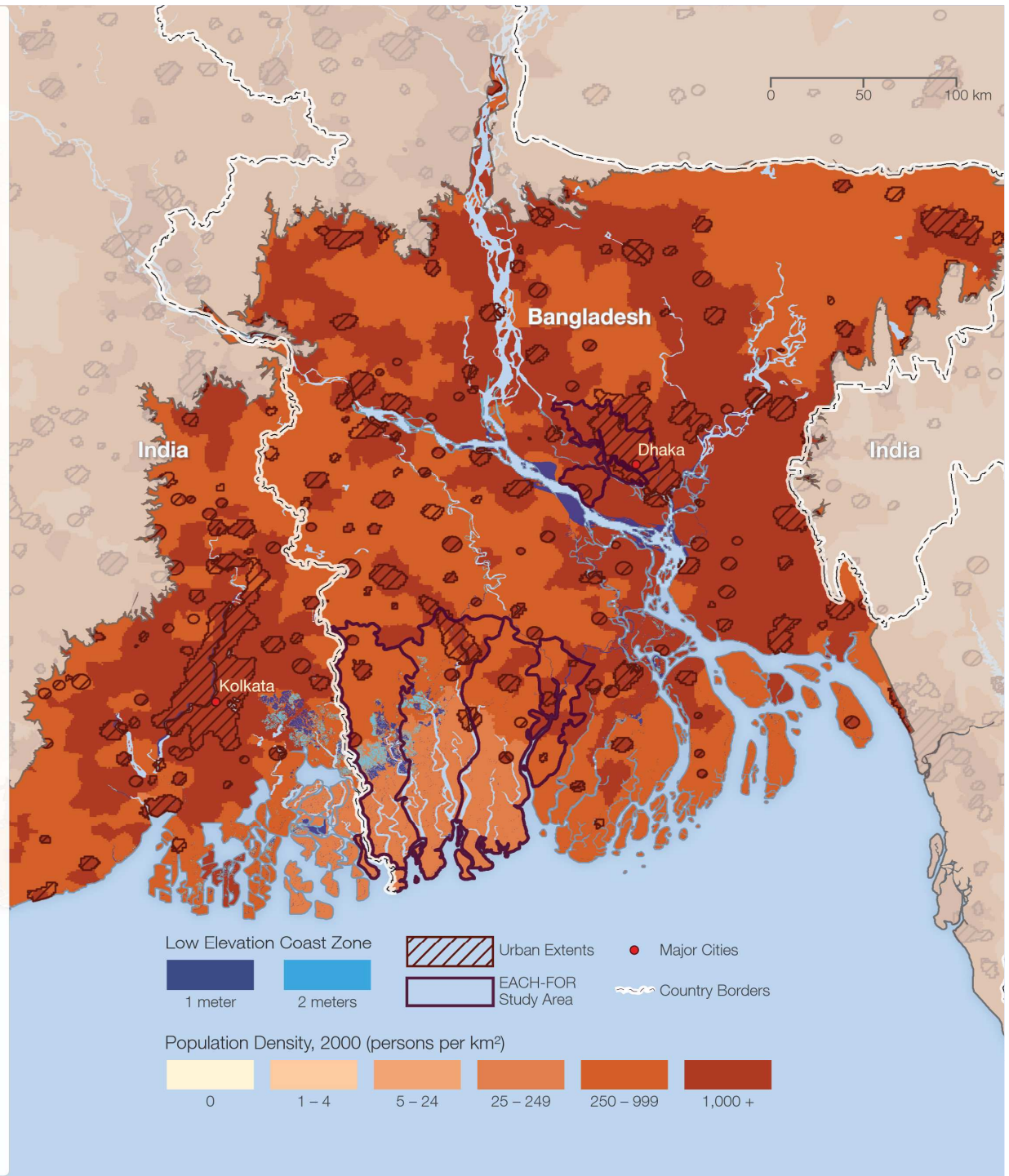
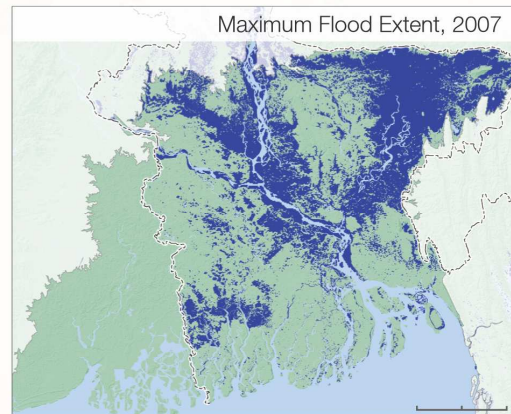
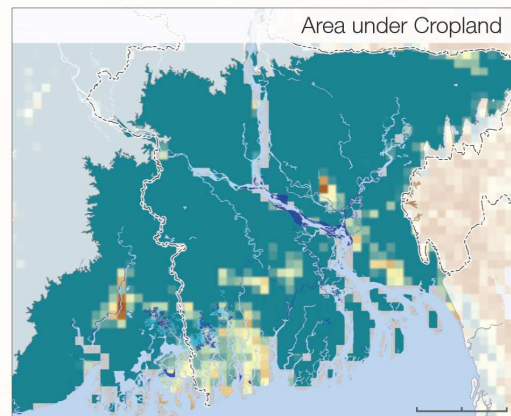
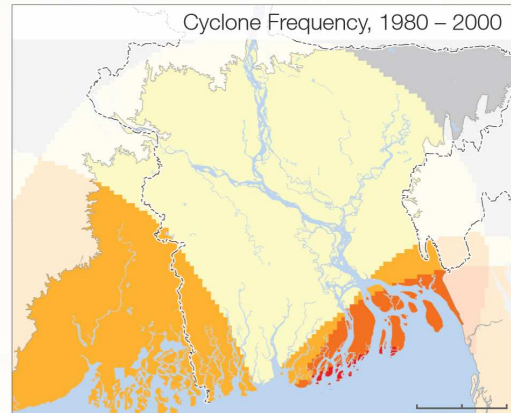










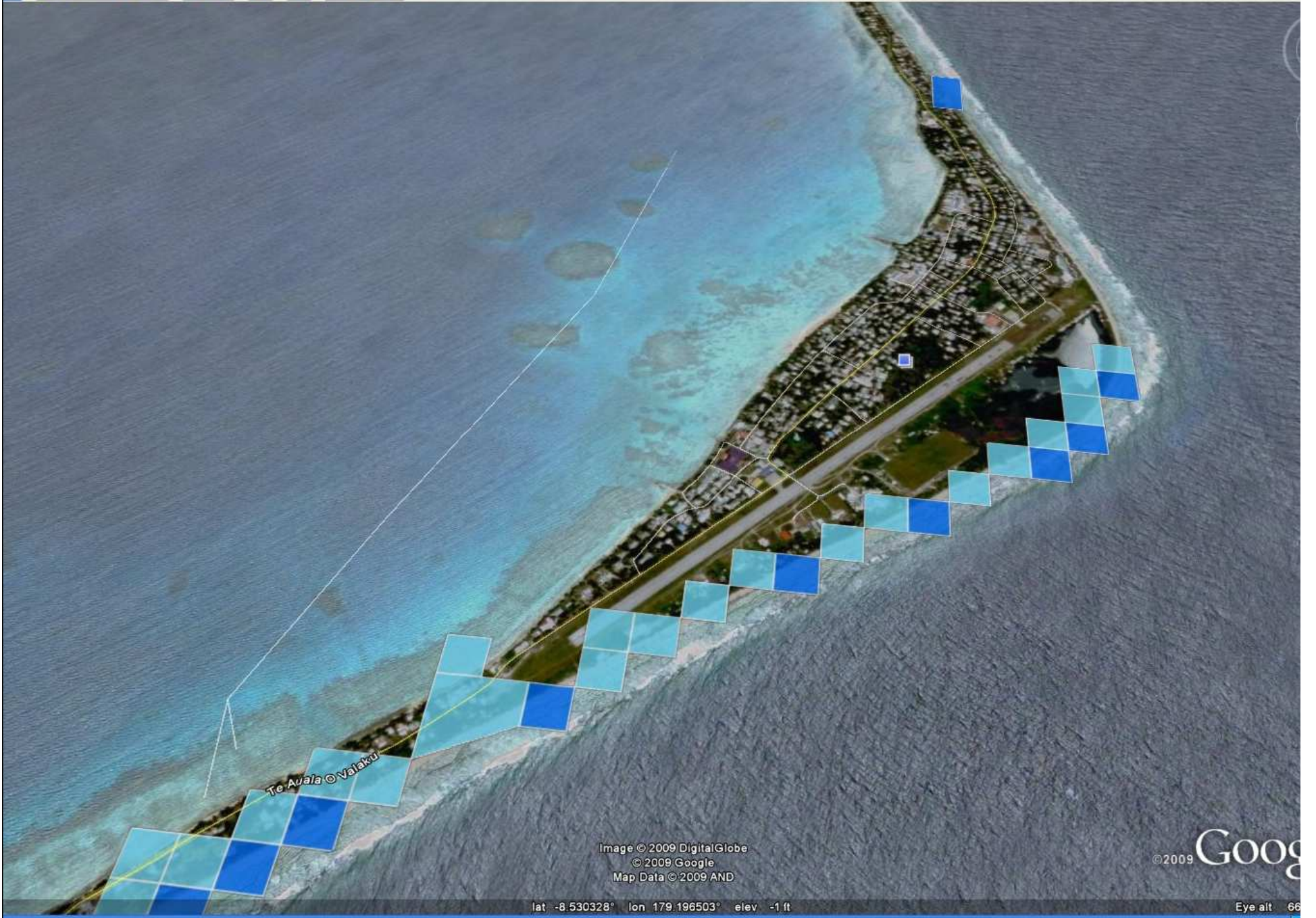




Malé

Date: 11-15-2009
Image © 2009 DigitalGlobe
© 2009 Google
© 2009 Google

©2009 Google



Te Auāla © Valaku

Image © 2009 DigitalGlobe
© 2009 Google
Map Data © 2009 AND

©2009 Google

lat -8.530328° lon 179.196503° elev -1 ft

Eye alt 66



6 Messages for Decision Makers

1. Avoid dangerous climate change
2. Focus on human security
3. Invest in resilience
4. Prioritize the world's most vulnerable populations
5. Include migration in adaptation strategies
6. Close the gaps in protection



Find our report at:
www.ehs.unu.edu



Thank you.

**UNU and our partners will report
back to the climate negotiations in
Barcelona, and Copenhagen in 2009.**

Dr. Koko Warner

United Nations University Institute of Environment and
Human Security (UNU-EHS)

UN Campus, Hermann-Ehlerstr. 10
53113 Bonn, Germany

Tel: +49 228 815 0226, Fax: +49 228 815 0299

UNGA 2nd Committee Special Event - Climate Change: Impacts and Threats
19 October 2009, New York City

warner@ehs.unu.edu