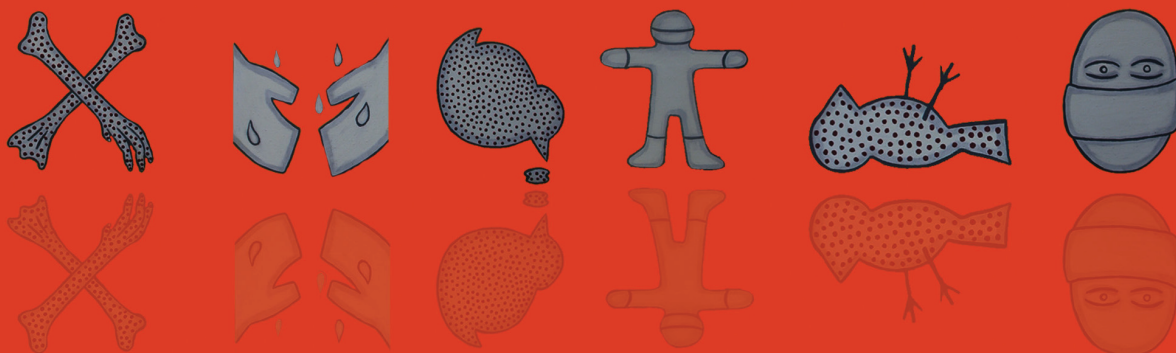


# Respuestas a la Gripe Aviar y Estado de Preparación para la Pandemia

Sinopsis del Tercer Informe de Progreso Global

DICIEMBRE de 2007



Coordinador del Sistema de las Naciones Unidas para la Gripe y el Banco Mundial

**Diciembre de 2007**

**Coordinación del Sistema de las Naciones Unidas  
para la Gripe**

2 United Nations Plaza,  
DC2-2609,  
New York, NY 10017,  
EE. UU.  
Tel. +1 212 906 6183 / +1 917 332 7296  
Fax +1 212 906 6473  
[www.influenza.undg.org](http://www.influenza.undg.org)

**Banco Mundial**

1818 H Street NW,  
Washington, DC 20433,  
EE. UU.  
Tel. +1 202 473 1000  
Fax +1 202 477 6391  
[www.worldbank.org/avianflu](http://www.worldbank.org/avianflu)

**Equipo de redacción**

**UNSCIC**

Simon Cubley  
Ellen Funch  
Heather Hannah  
Anna Kjellen  
Michael Mosselmans  
David Nabarro

**Banco Mundial**

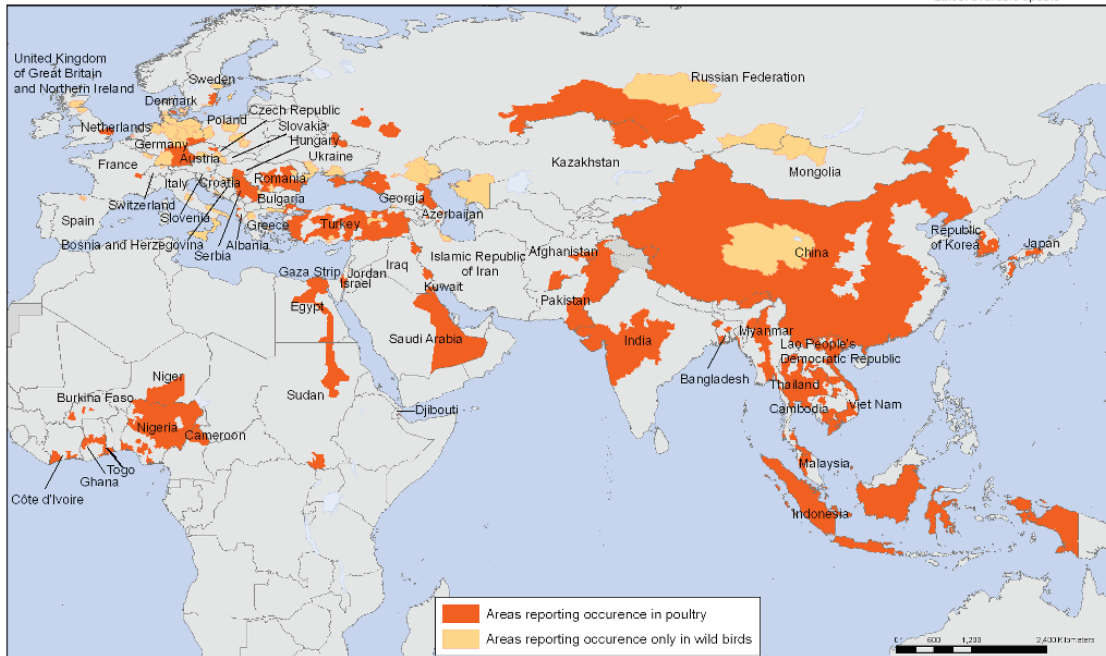
Olga Jonas  
Pauline Zwaans  
Anju Sharma  
Mahmut Aydogmus  
Piers Merrick

Ilustración de la portada de Gerardo Bravo García, Serie de la Gripe Aviar, 2006, pintura al óleo y hoja de oro sobre lienzo. Cortesía del Programa de arte del Banco Mundial.

## Áreas que notificaron casos confirmados de gripe aviar H5N1 en aves de corral y aves silvestres desde 2003, estado hasta el 27.09.2007

Areas reporting confirmed occurrence of H5N1 avian influenza in poultry and wild birds since 2003

Status as of 27 September 2007  
Latest available update



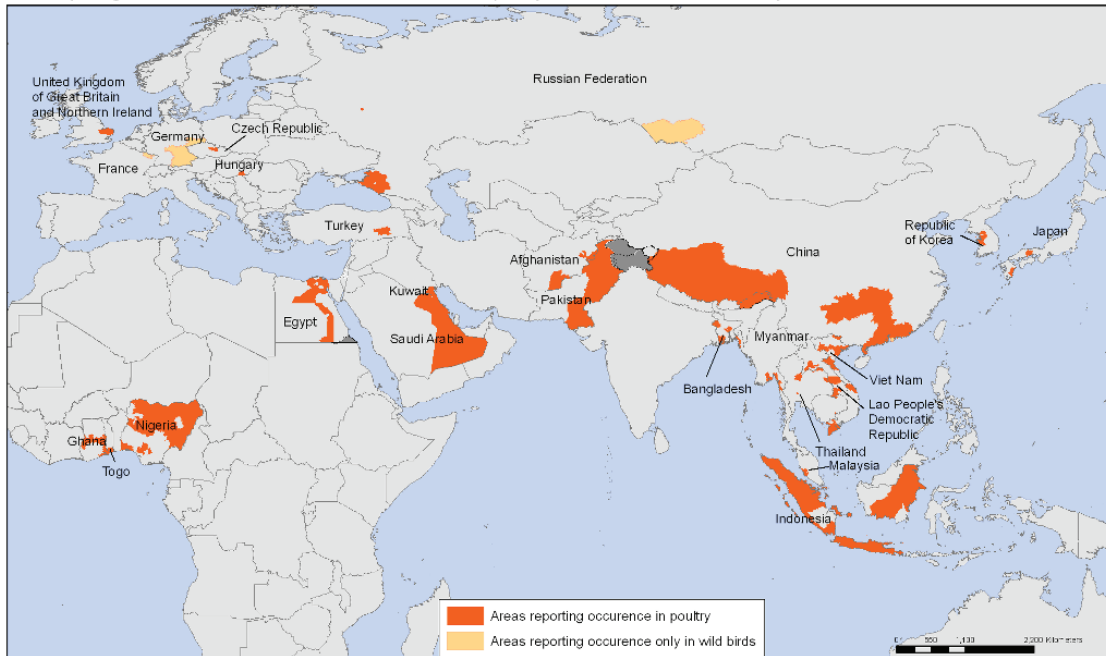
World Health Organization  
© WHO. 2007. All rights reserved

The boundaries and names shown and the designations used on this map do not imply the expression of any opinion whatsoever on the part of the World Health Organization concerning the legal status of any country, territory, city or area or of its authorities, or concerning the delimitation of its frontiers or boundaries. Dotted lines on maps represent approximate border lines for which there may not yet be full agreement.

Data Source: World Organisation for Animal Health (OIE) and national governments  
Map Production: Public Health Mapping and GIS Communicable Diseases (CDS) World Health Organization

## Áreas que notificaron casos confirmados de gripe aviar H5N1 en aves de corral y aves silvestres entre enero y junio de 2007

Areas reporting confirmed occurrence of H5N1 avian influenza in poultry and wild birds between January and June 2007

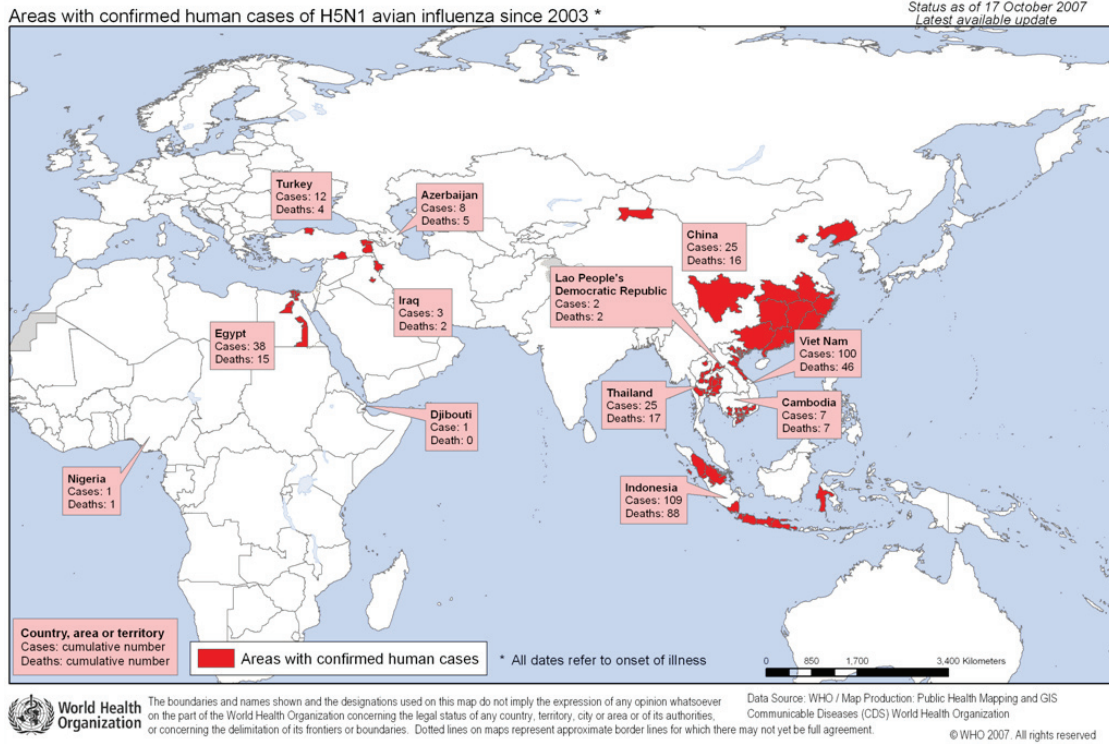


World Health Organization  
© WHO. 2007. All rights reserved

The boundaries and names shown and the designations used on this map do not imply the expression of any opinion whatsoever on the part of the World Health Organization concerning the legal status of any country, territory, city or area or of its authorities, or concerning the delimitation of its frontiers or boundaries. Dotted lines on maps represent approximate border lines for which there may not yet be full agreement.

Data Source: World Organisation for Animal Health (OIE) and national governments  
Map Production: Public Health Mapping and GIS Communicable Diseases (CDS) World Health Organization

## Áreas afectadas con casos confirmados de gripe aviar H5N1 desde 2003, estado hasta el 17.10.2007



## Áreas afectadas con casos confirmados de gripe aviar H5N1 desde el 1 de enero de 2007, estado hasta el 17.10.2007

