

Urban System Planning in China: The Case of the Pearl River Delta

Mee Kam Ng

Centre of Urban Planning & Environmental Management
The University of Hong Kong





The Pearl River Delta (PRD)



深圳市人民政府新聞辦公室
www.sz.gov.cn



深圳市人民政府新聞辦公室
www.sz.gov.cn



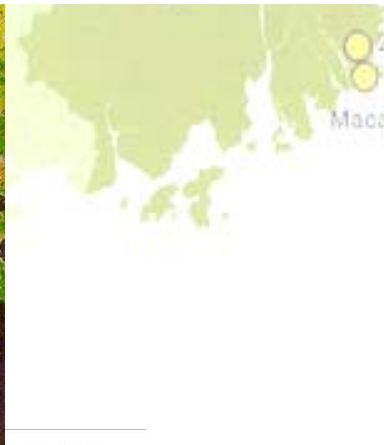
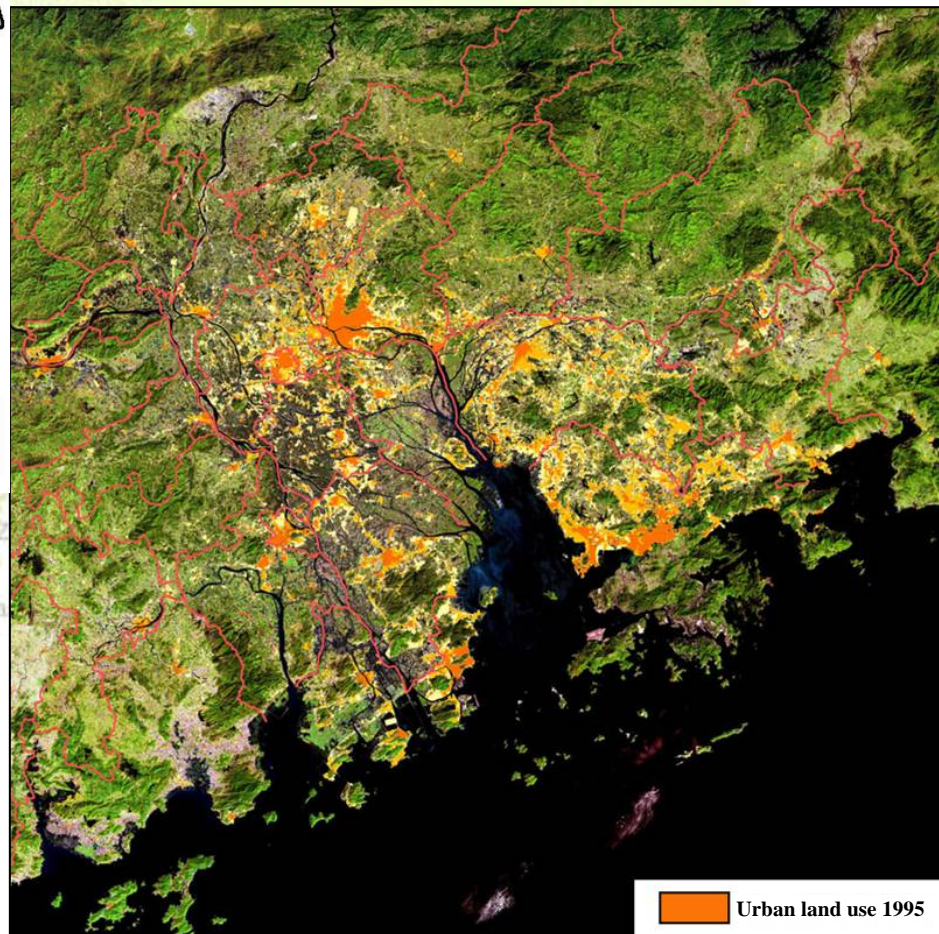
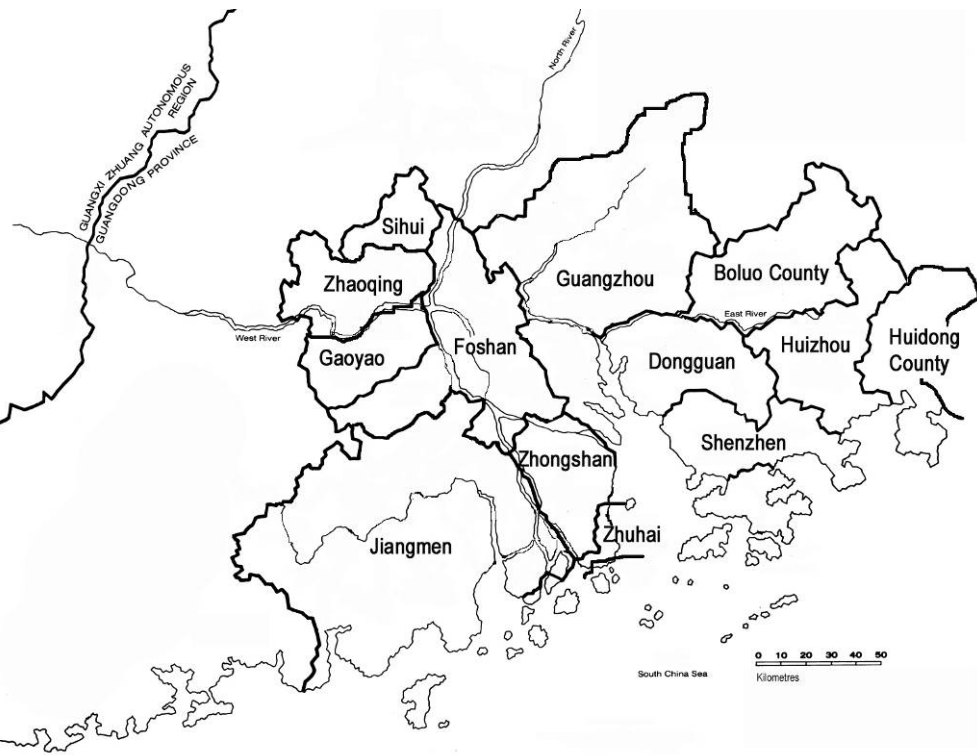
Guangdong Province



Pearl River Delta



The PRD Region



- Urban land use 1995
- Urban land use 2000
- Urban land use 2002



Contents

- ◇ The PRD region: genesis of the world factory
- ◇ Development problems in an administratively disjointed region
- ◇ Urban System Planning in the PRD (PRDUSP):
 - 1994 PRDUSP
 - 2005 PRDUSP
- ◇ Concluding Remarks



The PRD Region: genesis of the world factory



- ◇ China had resisted “Western influence” for two centuries (18th and 19th centuries)
- ◇ **Socialist China set up in 1949-adopted a closed-door policy for 3 decades until 1978 (Open Door Policy)**
- ◇ Centrally planned economy & closed door policy → **total control of economy & society by the state** → bankrupt economy & demoralised society
- ◇ Centrally planned economy: two political economies
 - Urban areas: from “cradle to grave” services to urbanites— about 10-15% of the population
 - Rural areas: collectivisation without urban benefits
- ◇ The post-1978 Open Door Policy → administrative & economic decentralisation → local governments struggle to separate administrative and economic functions



The PRD Region: an overview

- ◇ To understand why the PRD has become a “World Factory” after the open door policy, Hong Kong has to be brought into the picture:
 - A capitalist enclave at the southern gate of socialist China—developed as a result of “transferred industrialization” from China in the early 1950s
 - Hong Kong has become a world city in the East → deindustrialization → “hollowing out” of the industries to the Pearl River Delta
 - Economic re-integration as a result of open door policy in the PRD and economic restructuring in Hong Kong
- ◇ Hong Kong’s investment in the PRD:
 - 90% of Hong Kong manufacturers have production facilities in the PRD
 - Employing >10 million workers
 - Over 80% of Hong Kong traders source in the PRD
 - Hong Kong handles >80% of the PRD’s imports & exports





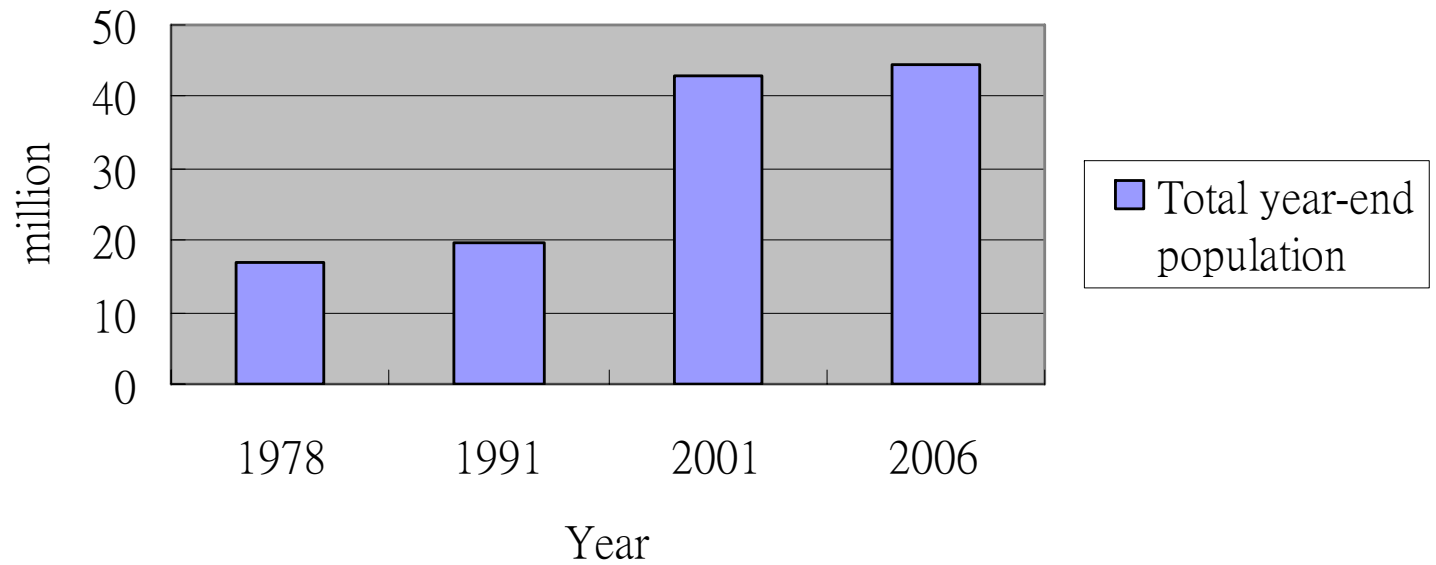
深圳市人民政府新聞辦公室
www.shenzheninfo.gov.cn



深圳市人民政府新聞辦公室
www.shenzheninfo.gov.cn



Total Year-end Population

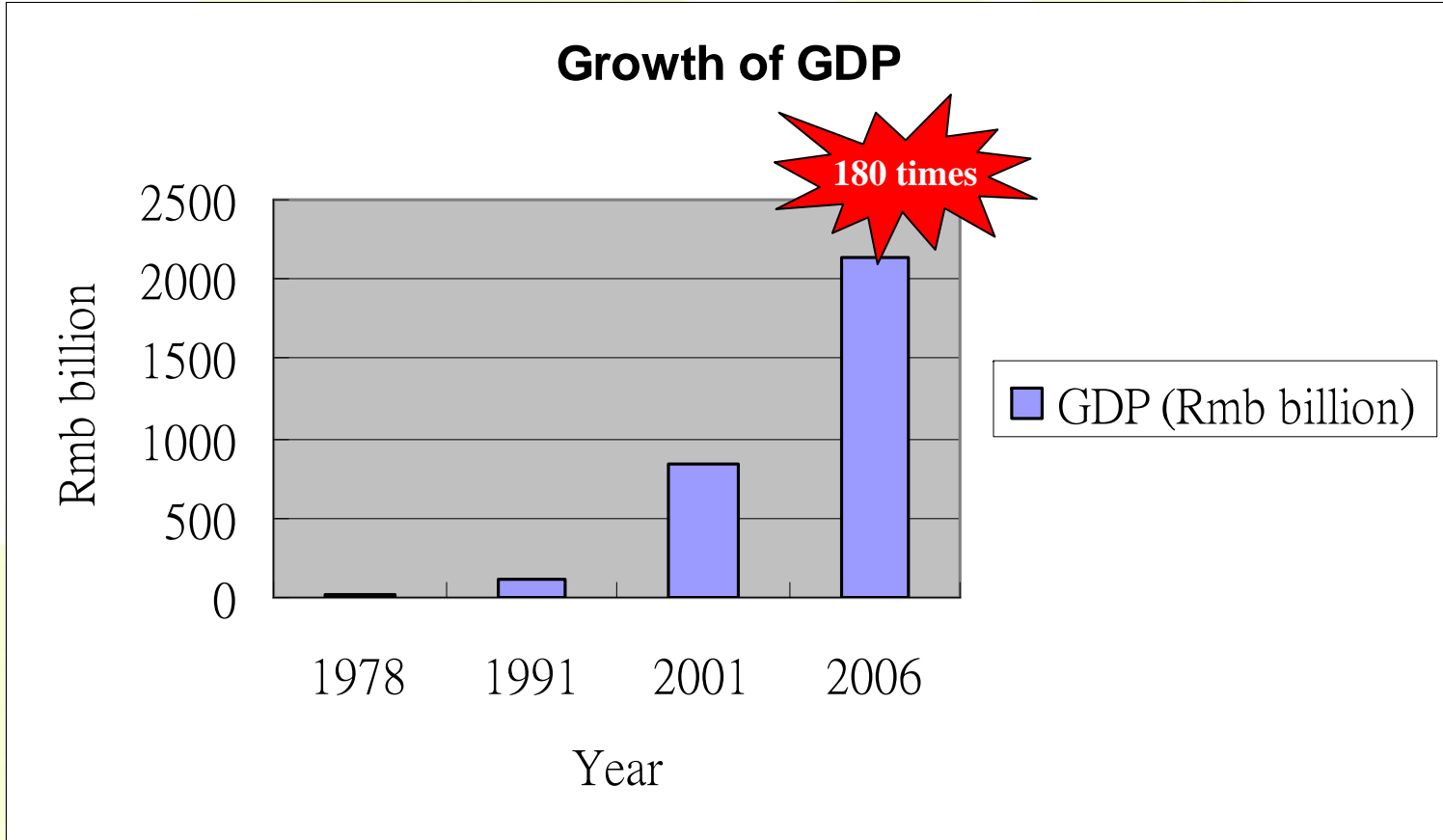




深圳市人民政府新聞辦公室
www.sz.gov.cn



深圳市人民政府新聞辦公室
www.sz.gov.cn





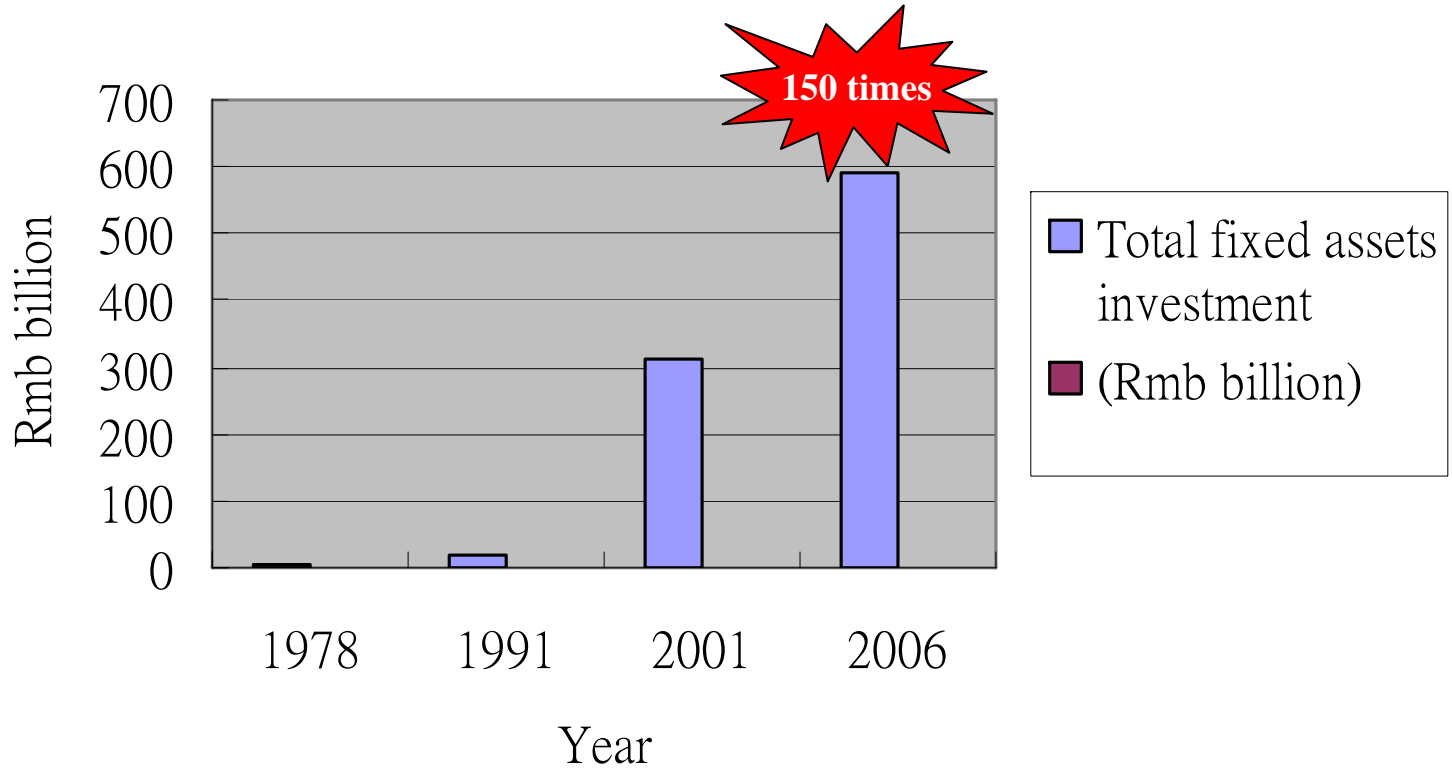
深圳市人民政府新聞辦公室
www.sz.gov.cn



深圳市人民政府新聞辦公室
www.sz.gov.cn



Fixed Assets Investment

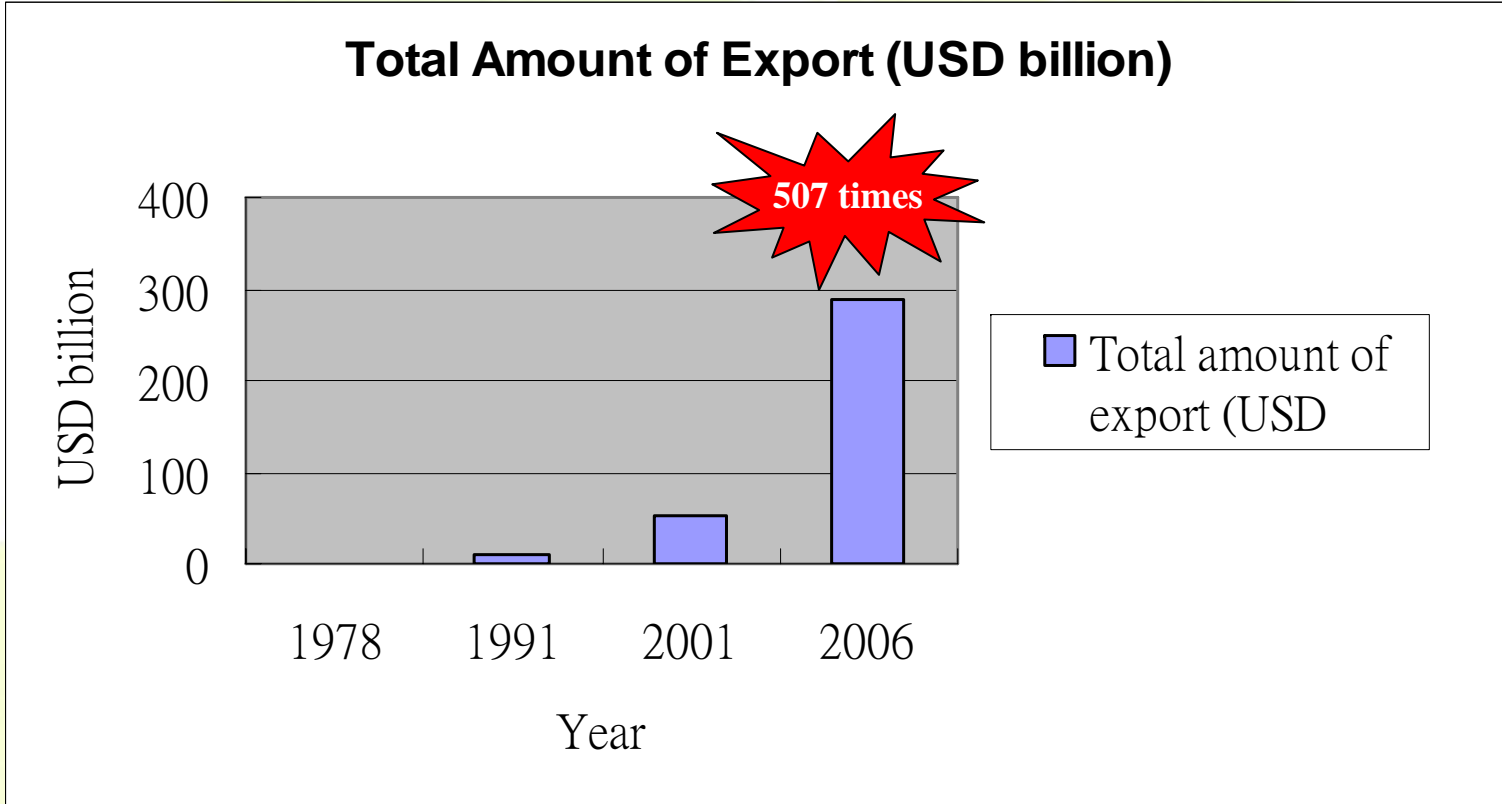




深圳市人民政府新聞辦公室
www.sz.gov.cn



深圳市人民政府新聞辦公室
www.sz.gov.cn

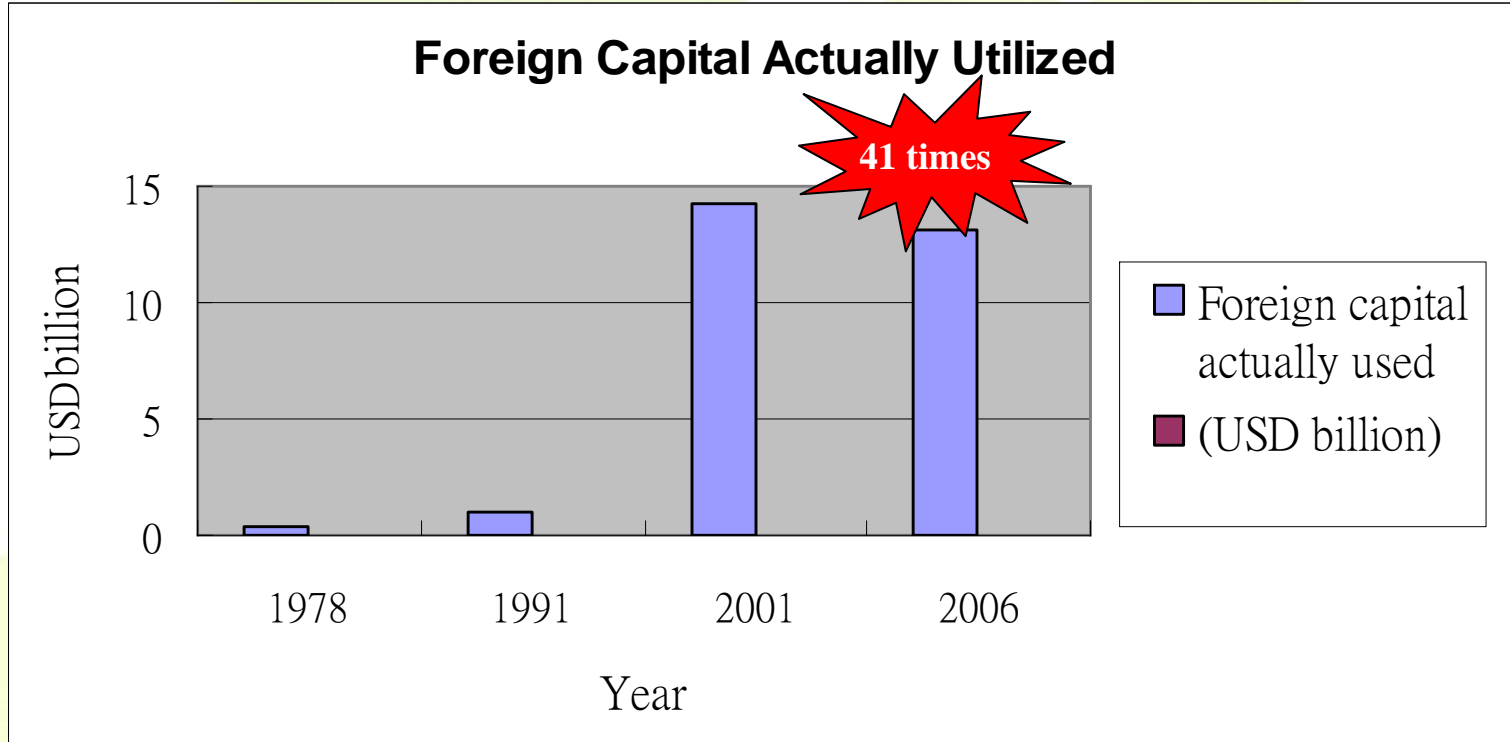




深圳市人民政府新聞辦公室
www.sz.gov.cn



深圳市人民政府新聞辦公室
www.sz.gov.cn





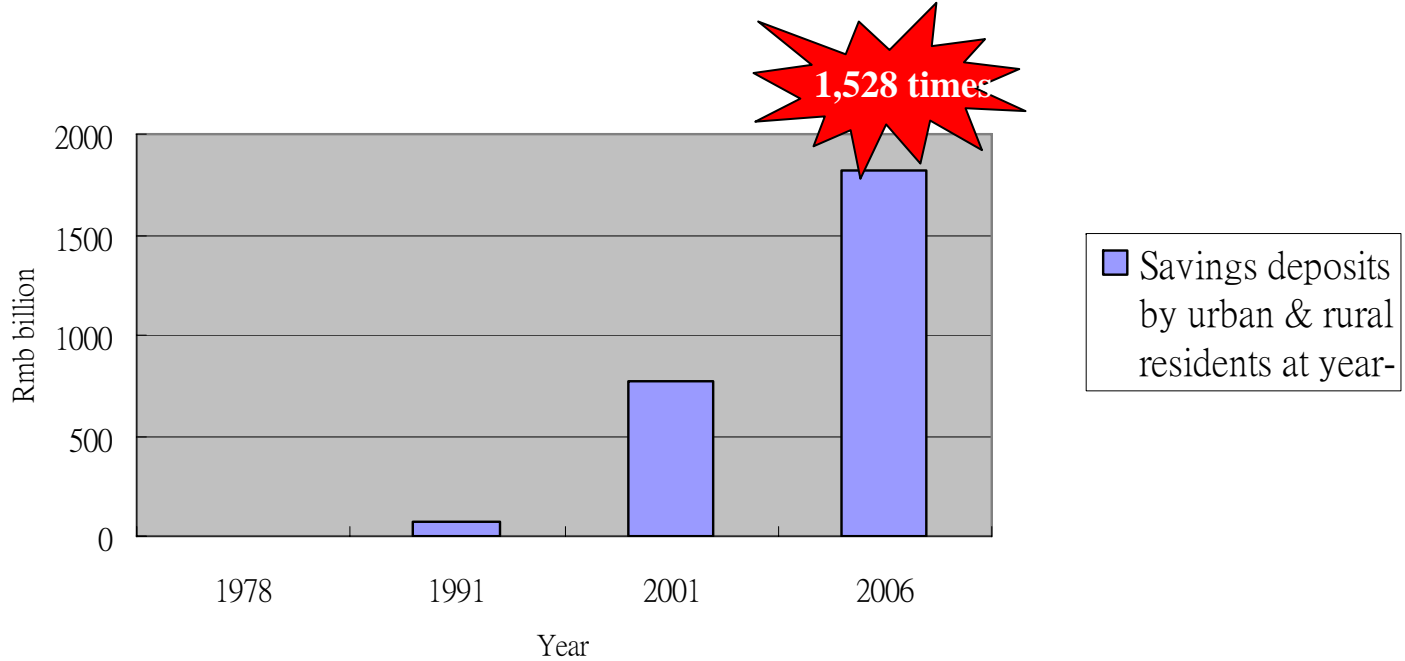
深圳市人民政府新辦公大樓
www.sz.gov.cn



深圳市人民政府新辦公大樓
www.sz.gov.cn



Savings Deposits by Urban & Rural Residents





PRD Region—Economic Achievement

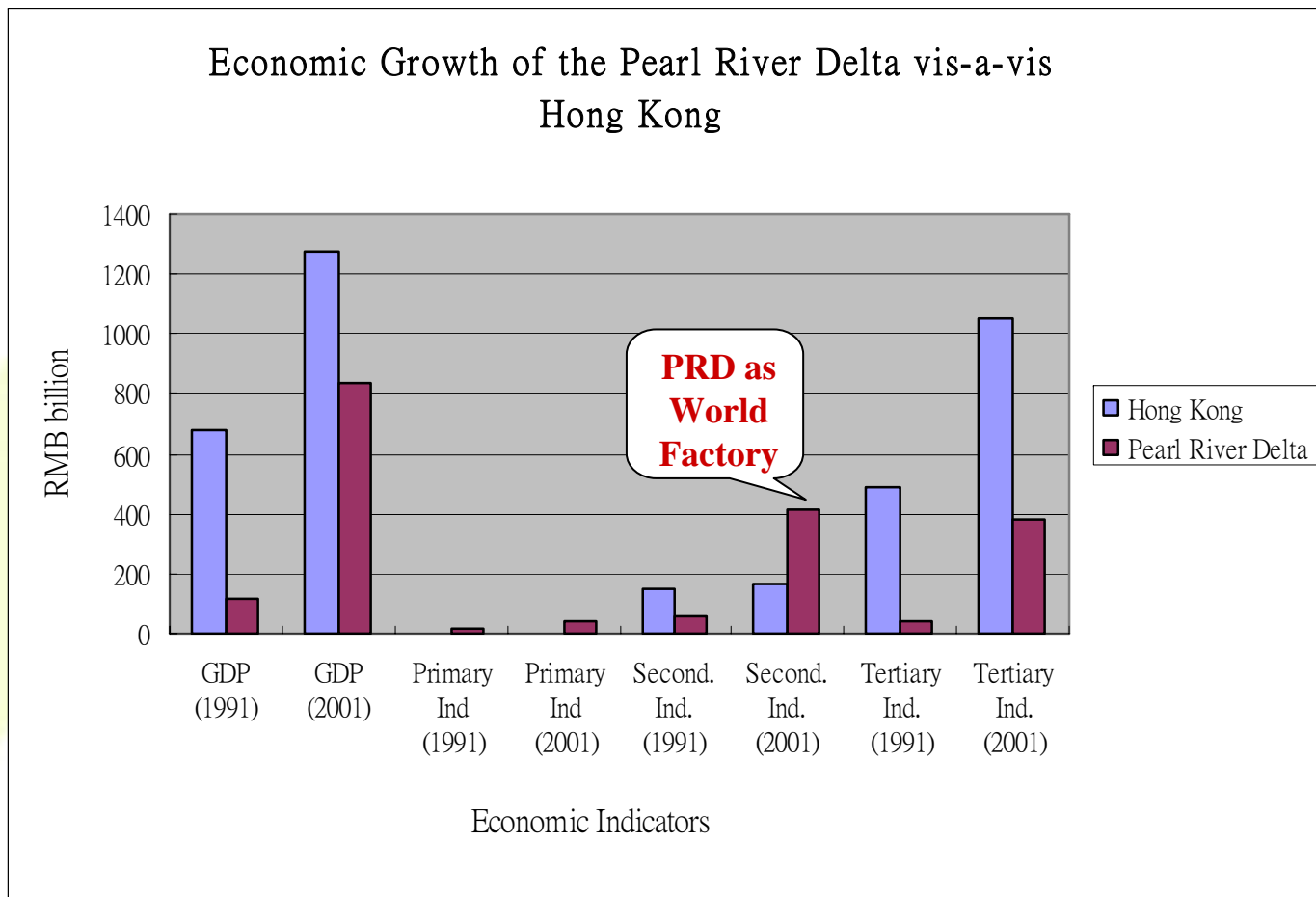
Profile	% of China	% of GD
Area	0.40%	23.00%
Population	3.38%	47,.79%
GDP	10.23%	81.76%
Export value	29.79%	95.63%
Import value	27.56%	96.86%
FDI	18.84%	90.18%





Development Problems

- Regional disparities: **between Hong Kong & the PRD**





Development Problems



深圳市人民政府新聞辦公室
www.sz.gov.cn



深圳市人民政府新聞辦公室
www.sz.gov.cn

