



Country profile:

# Bangladesh

## LDC status



Inclusion: 1975

Graduation: Scheduled to graduate on 24 November 2026

## Reports and resolutions



### Inclusion

CDP reports: 1975  
ECOSOC resolution: E/1976(LIX)  
GA resolution: A/RES/3487(XXX)

### Graduation

CDP reports: 2018, 2021  
ECOSOC resolution: E/RES/2021/11  
GA resolution: A/76/8  
Impact assessment: 2021  
Vulnerability profile: 2021  
Country presentation: 2021 CDP EGM presentation  
Country statement: 2021 CDP Plenary statement, 2021 CDP Plenary Statement-Annex  
Monitoring reports: 2022, 2023, 2024

## Key figures\*

\* Data from the 2024 triennial review

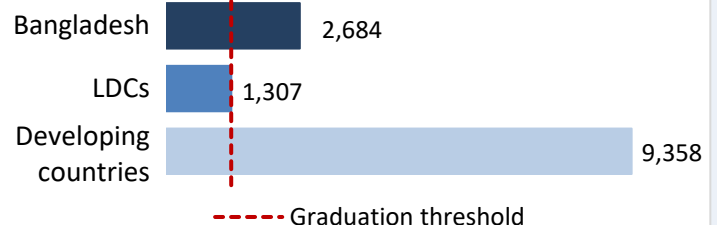
### Gross national income (GNI) per capita\*



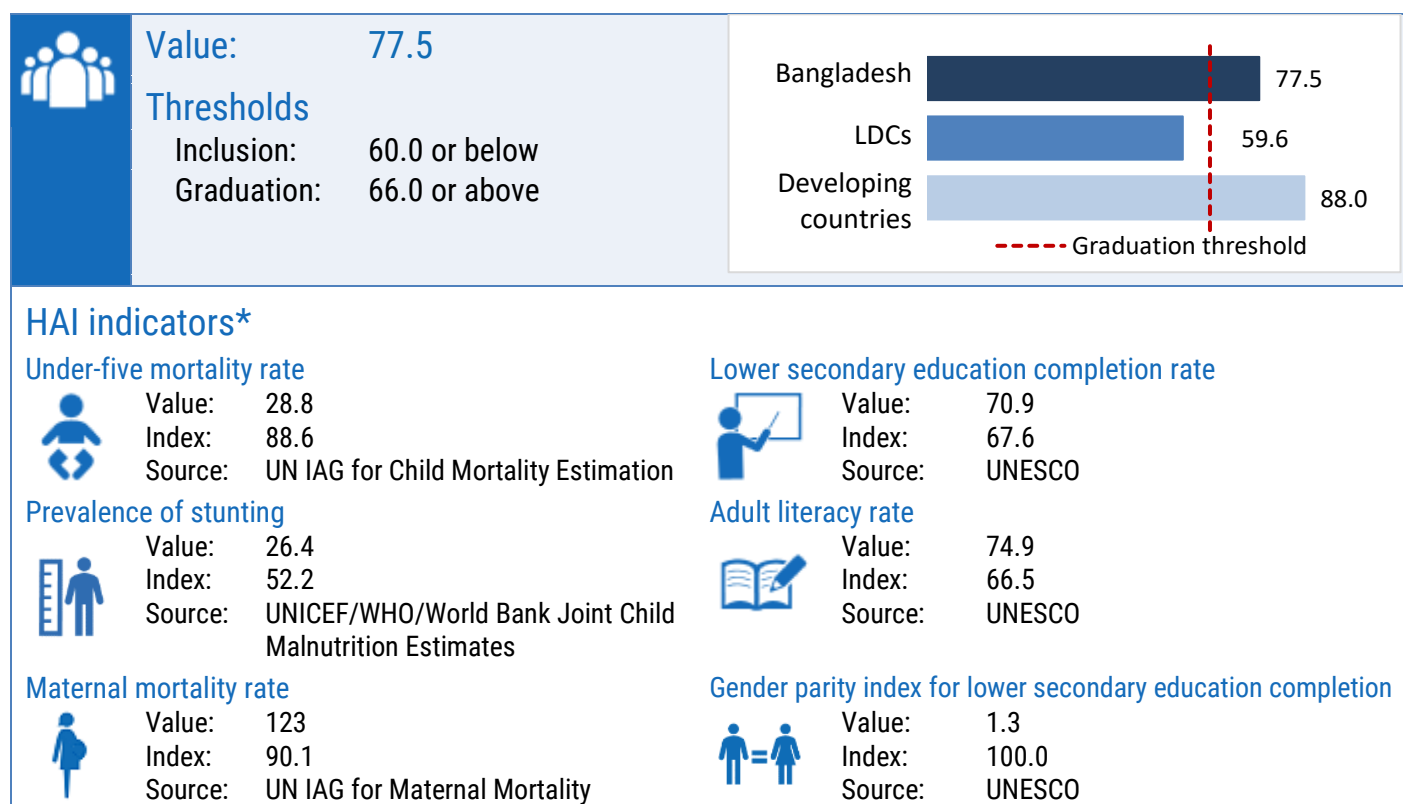
Value \$2,684

#### Thresholds:

Inclusion \$1,088 or below  
Graduation \$1,306 or above



## Human assets index (HAI)\*



## Economic and environmental vulnerability index (EVI)\*

