



## Country profile: **Senegal**

### LDC status



**Inclusion:** 2000  
**Graduation:** Scheduled to graduate on 19 December 2029

### Reports and resolutions



#### Inclusion

CDP report: 2000  
ECOSOC resolution: E/2000/34  
GA resolution: A/RES/55/253

#### Graduation

CDP reports: 2021, 2024  
ECOSOC resolution: E/2024/7  
GA resolution: A/RES/79/230  
Impact assessment: 2024  
Vulnerability profile: 2024  
Country statement: 2024 CDP Plenary statement, 2024 CDP Plenary - letter from Permanent Mission

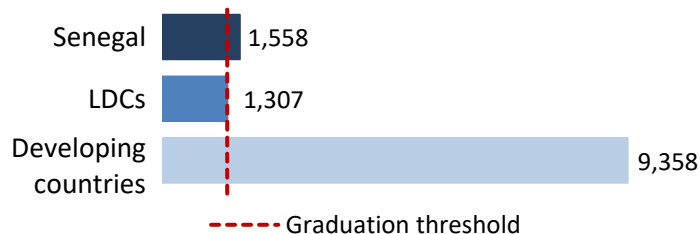
### Key figures\*

*\* Data from the 2024 triennial review*

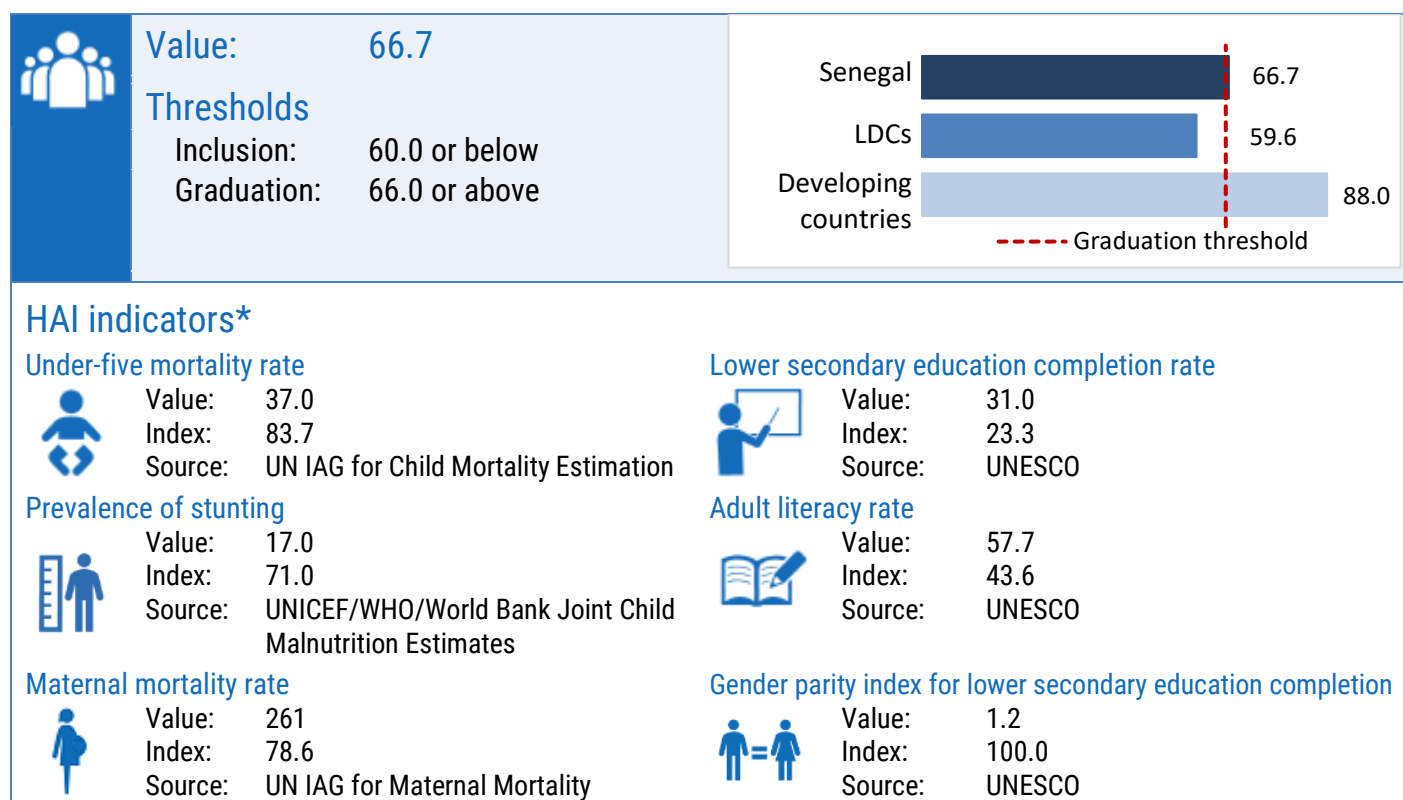
#### Gross national income (GNI) per capita\*



**Value** \$1,558  
**Thresholds:**  
Inclusion: \$1,088 or below  
Graduation: \$1,306 or above



## Human assets index (HAI)\*



## Economic and environmental vulnerability index (EVI)\*

