



Country profile:

Equatorial Guinea

LDC status



Inclusion: 1982

Graduation: 4 June 2017

Reports and resolutions



Inclusion

CDP reports: 1981, 1982

ECOSOC resolutions: E/DEC/1980/161, E/DEC/1982/106, E/RES/1982/41

GA resolutions: A/RES/35/106, A/RES/49/133

Graduation

CDP reports: 2009, 2010, 2011, 2012, 2014, 2015, 2016, 2017, 2018

ECOSOC resolutions: E/2009/35, E/2011/20, E/2012/32

GA resolution: A/RES/68/18

Impact assessment: 2009

Vulnerability profile: 2009

Country statement: 2009 CDP EGM, 2009 CDP Plenary – English, 2009 CDP Plenary - Spanish

Monitoring reports: 2017, 2018, 2019, 2020, 2021, 2024

Key figures*

* Data from the 2024 triennial review

Gross national income (GNI) per capita*

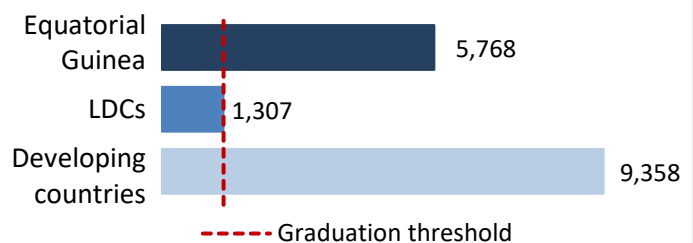


Value: \$5,768

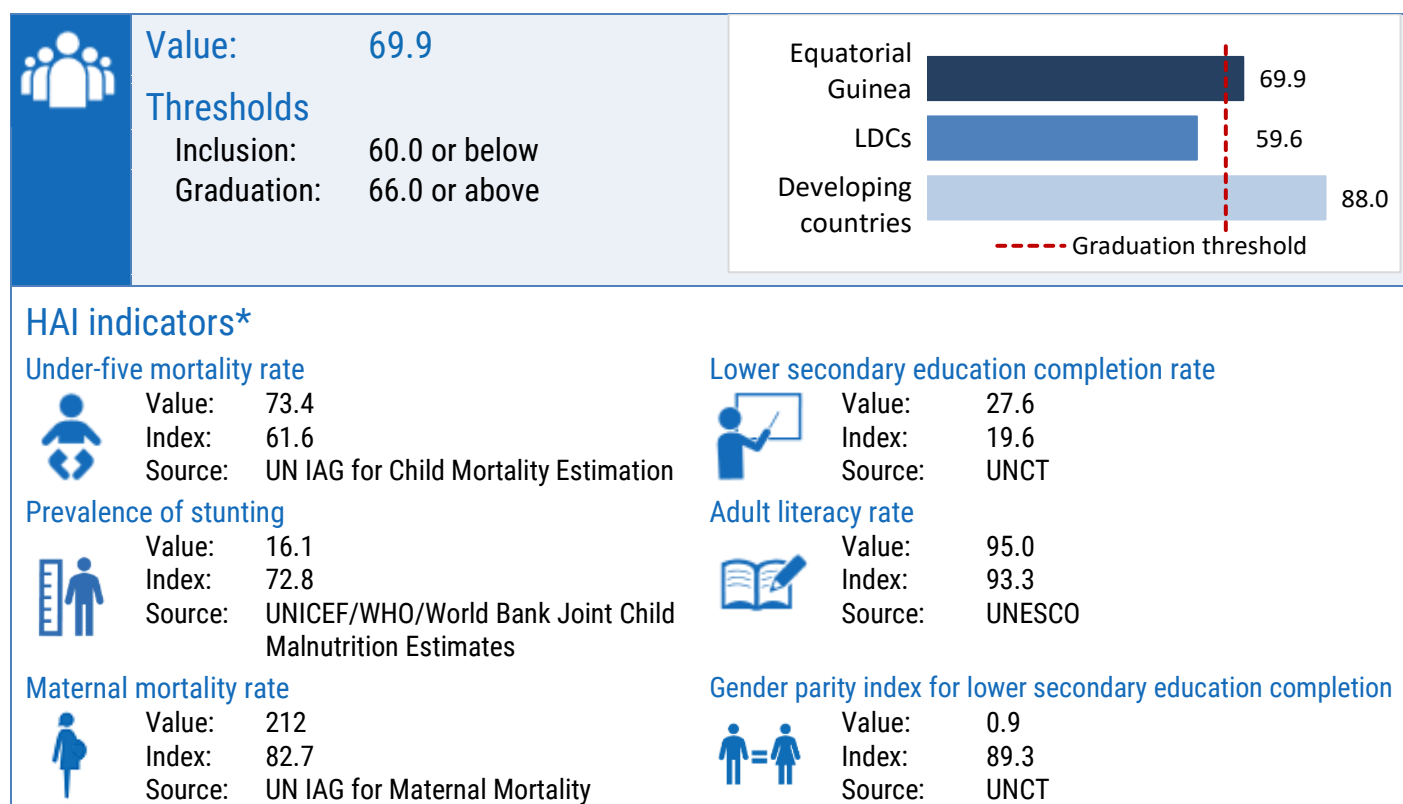
Thresholds

Inclusion: \$1,088 or below

Graduation: \$1,306 or above



Human assets index (HAI)*



Economic and environmental vulnerability index (EVI)*

