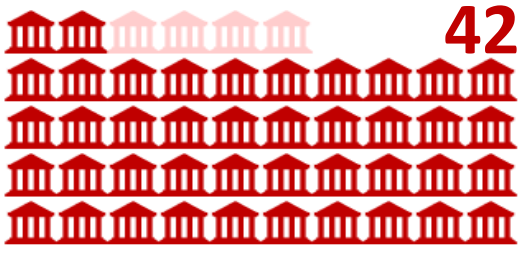


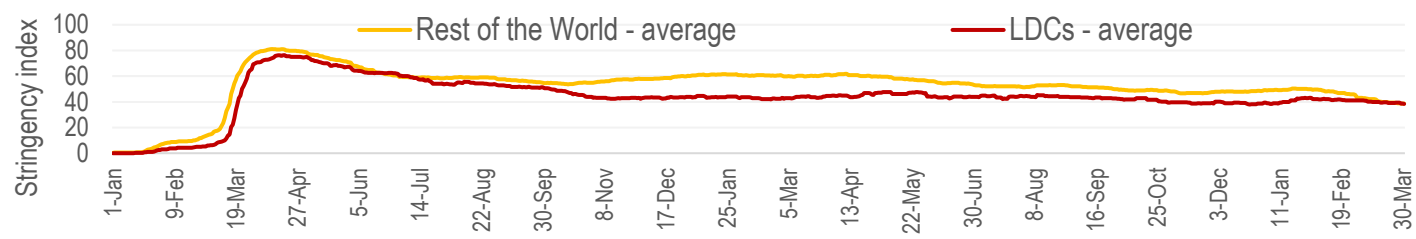
COVID-19 government responses in LDCs – status report of 31 Mar 2022

For how many of the 46 LDCs have measures been recorded?

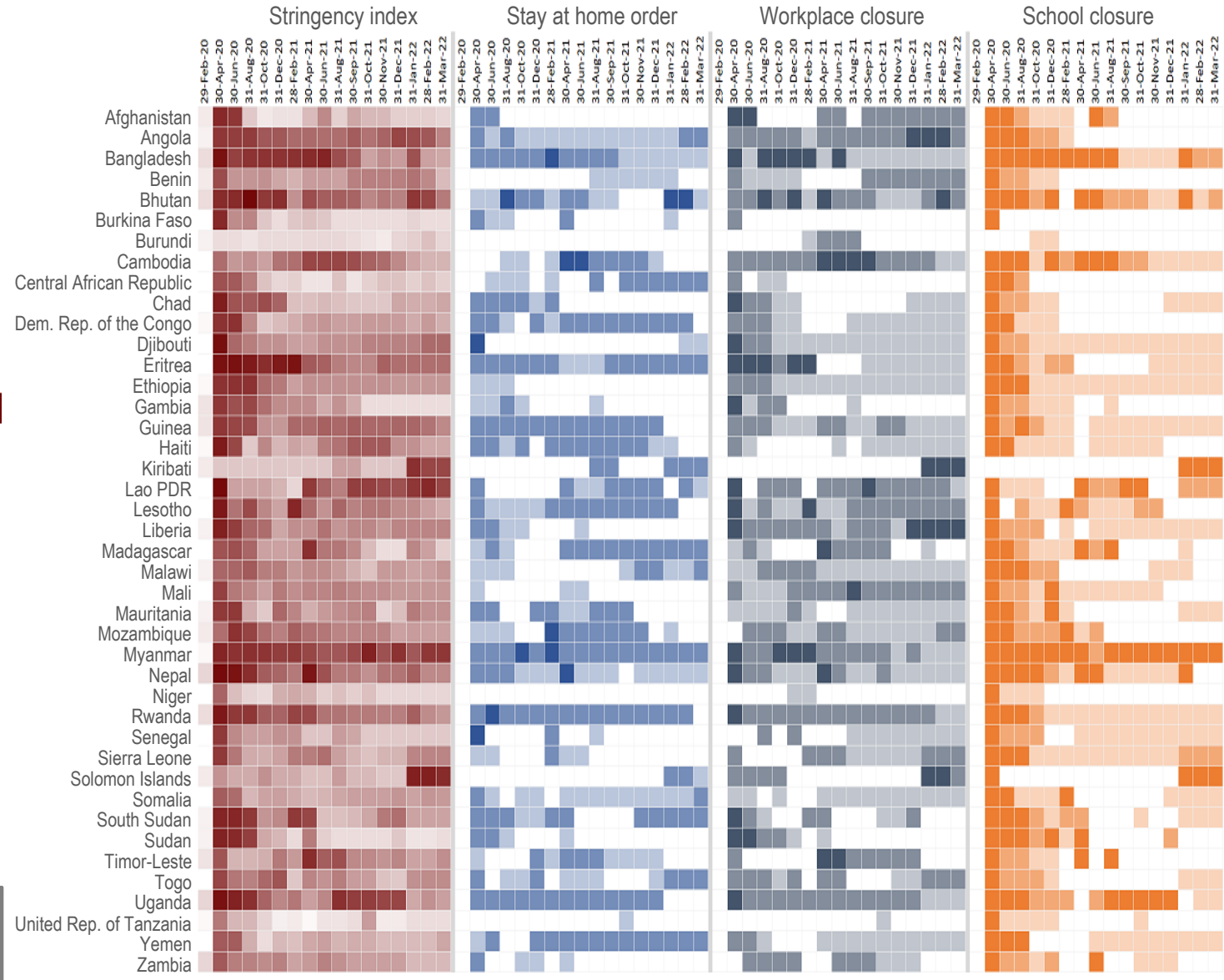


42

Timing of recorded policy responses by governments in LDCs



Stringency index
 The Stringency index is calculated using nine indicators, combining various measures of government responses, to capture a variation in containment and closure policies only. It records the number and strictness of government policies, not the appropriateness or effectiveness of a country's response.



Legend:

Stringency Index
 Least stringent (0) Most stringent (100)

Stay at home order
 No measures
 Recommended
 Required with exceptions
 Required without exceptions

Workplace closure
 No measures
 Recommended
 Required for some sectors
 Required except essential sectors

School closure
 No measures
 Recommended
 Required for some levels
 Required for all levels

Source: CDP Secretariat, calculated based on data from Oxford COVID-19 Government Response Tracker (<https://covidtracker.bsg.ox.ac.uk/>)