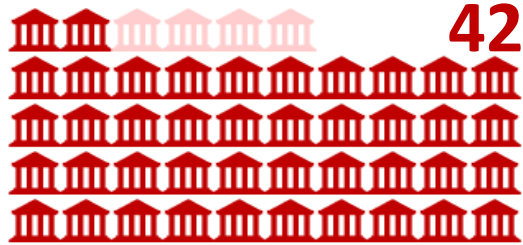


# COVID-19 government responses in LDCs – status report of 30 Apr 2022

For how many of the 46 LDCs have measures been recorded?



42

## Stringency index

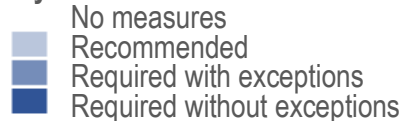
The Stringency index is calculated using nine indicators, combining various measures of government responses, to capture a variation in containment and closure policies only. It records the number and strictness of government policies, not the appropriateness or effectiveness of a country's response.

### Legend:

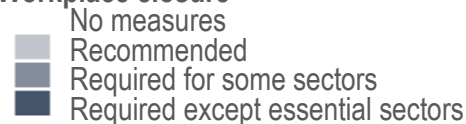
#### Stringency Index



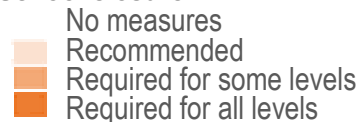
#### Stay at home order



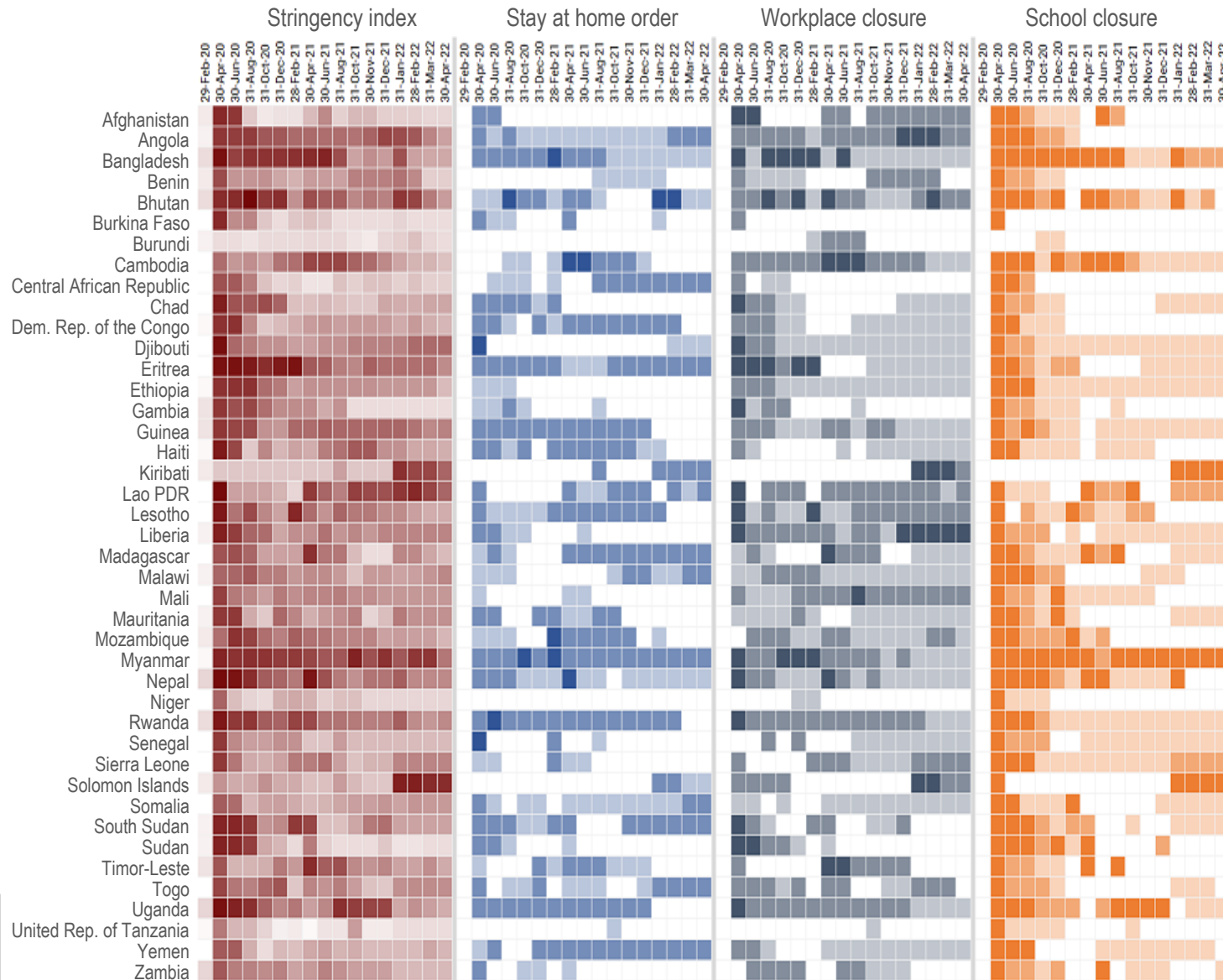
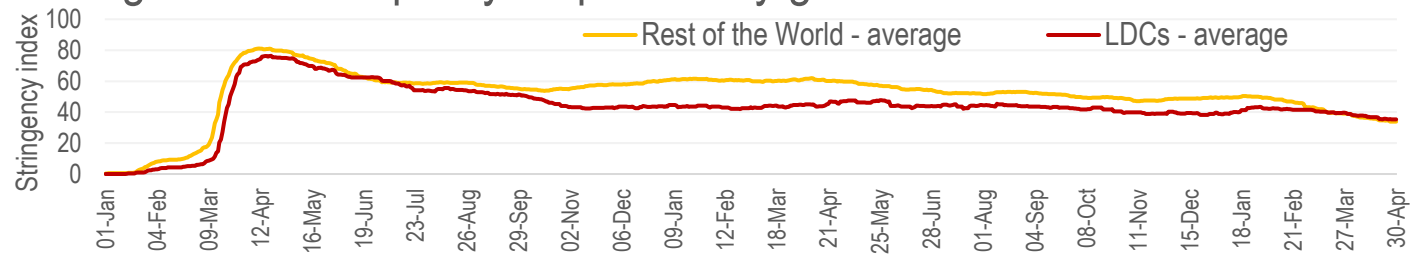
#### Workplace closure



#### School closure



## Timing of recorded policy responses by governments in LDCs



Source: CDP Secretariat, calculated based on data from Oxford COVID-19 Government Response Tracker (<https://covidtracker.bsg.ox.ac.uk/>)