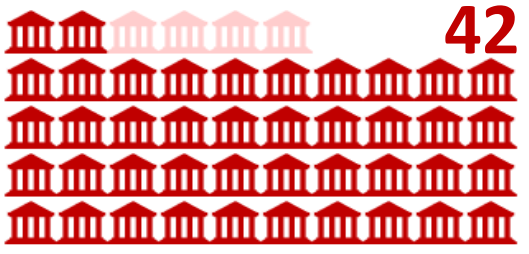
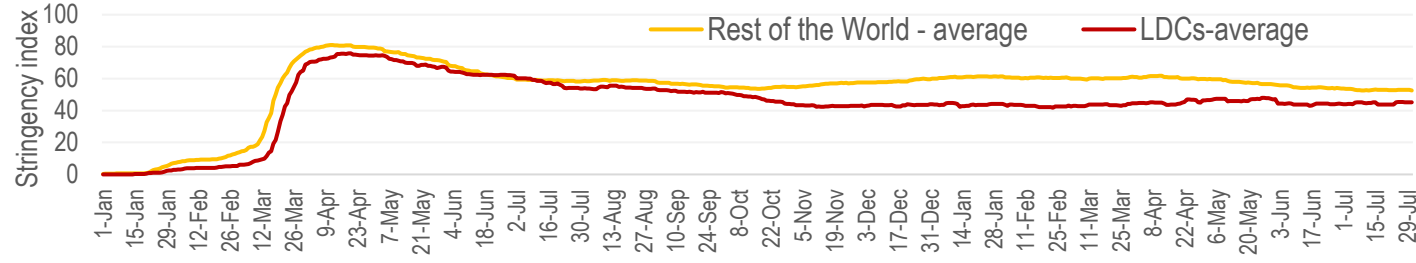


COVID-19 government responses in LDCs – status report of 23 July 2021

For how many of the 46 LDCs have measures been recorded?

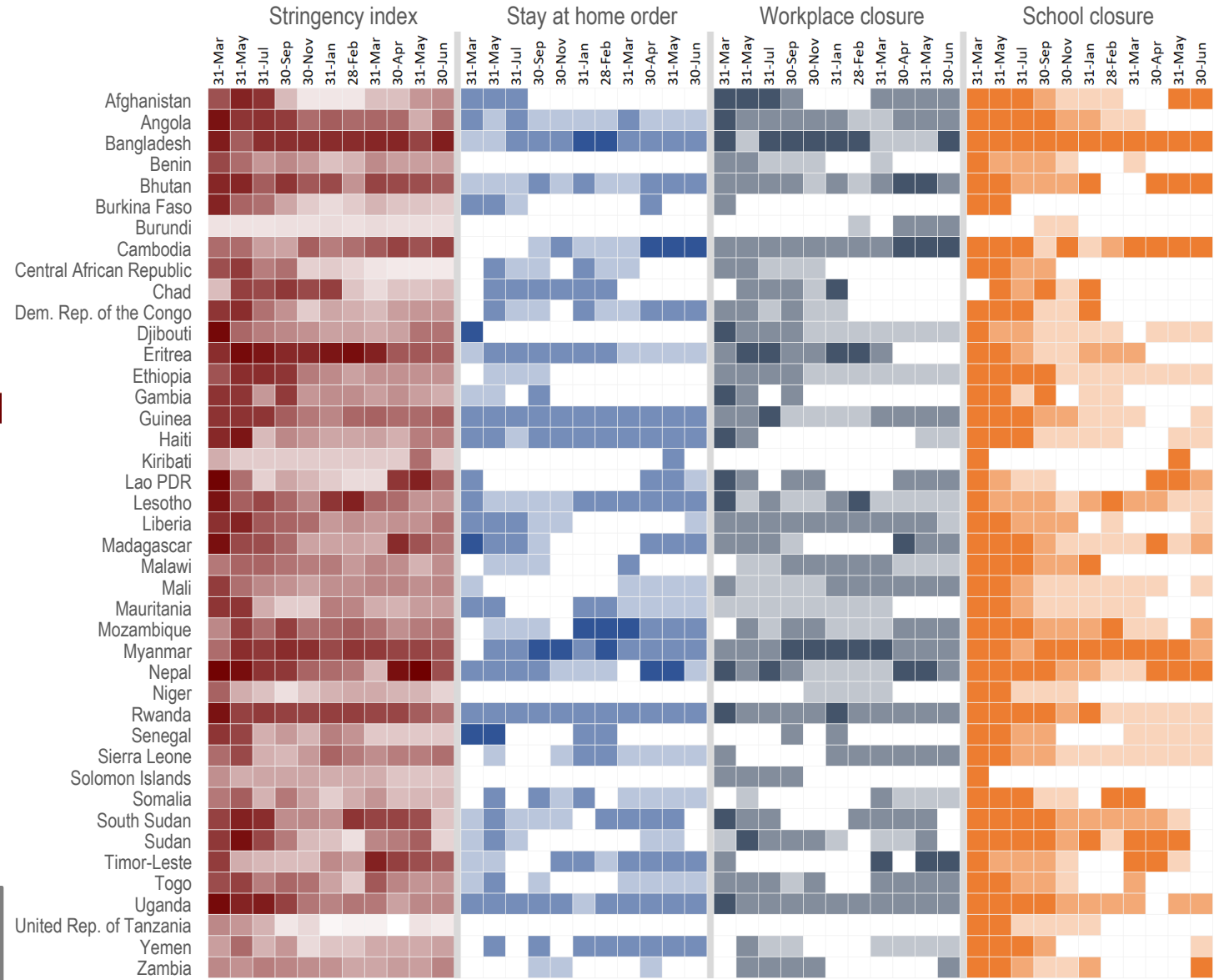


Timing of recorded policy responses by governments in LDCs



Stringency index

The Stringency index is calculated using nine indicators, combining various measures of government responses, to capture a variation in containment and closure policies only. It records the number and strictness of government policies, not the appropriateness or effectiveness of a country's response.



- Legend:**
- Stringency Index**
- Least stringent (0) Most stringent (100)
- Stay at home order**
- No measures
 - Recommended
 - Required with exceptions
 - Required without exceptions
- Workplace closure**
- No measures
 - Recommended
 - Required for some sectors
 - Required except essential sectors
- School closure**
- No measures
 - Recommended
 - Required for some levels
 - Required for all levels

Source: CDP Secretariat, calculated based on data from Oxford COVID-19 Government Response Tracker (<https://covidtracker.bsg.ox.ac.uk/>)