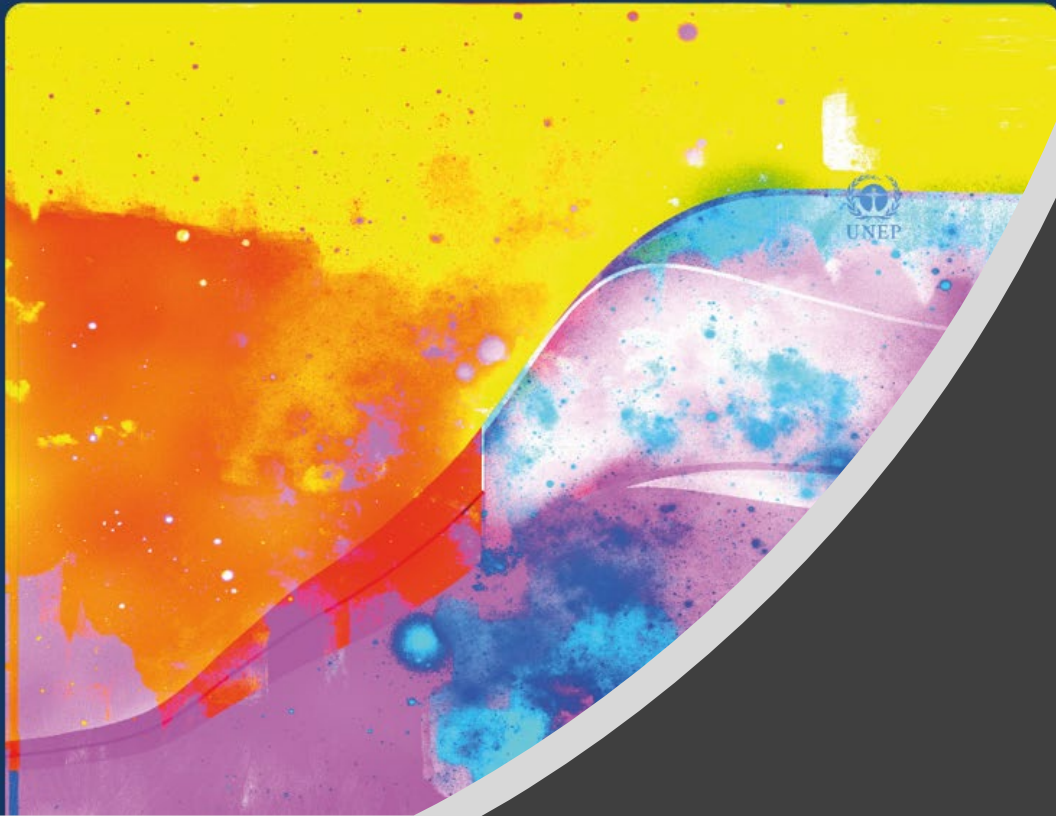


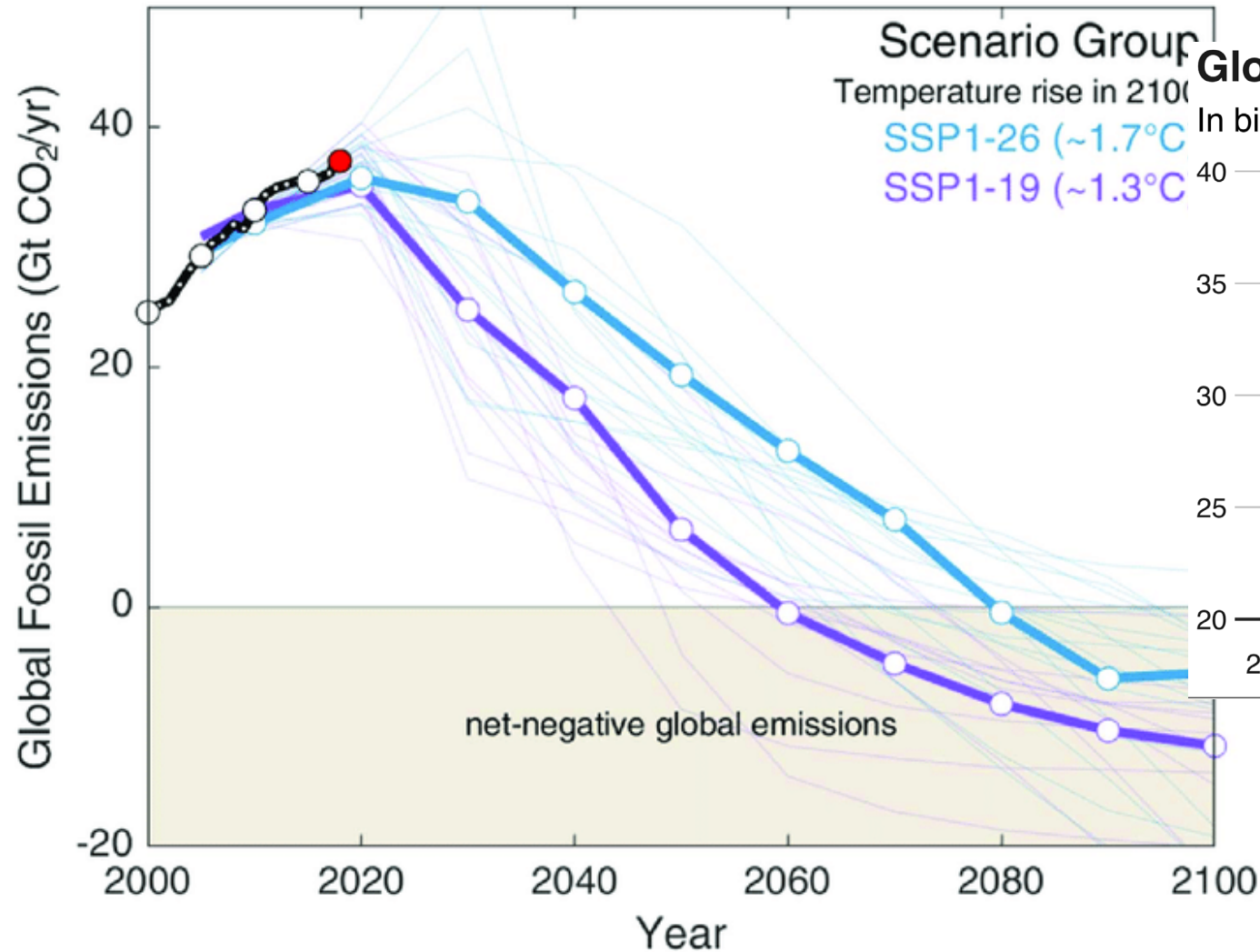
Global Warming of 1.5°C

An IPCC special report on the impacts of global warming of 1.5°C above pre-industrial levels and related global greenhouse gas emission pathways, in the context of strengthening the global response to the threat of climate change, sustainable development, and efforts to eradicate poverty.



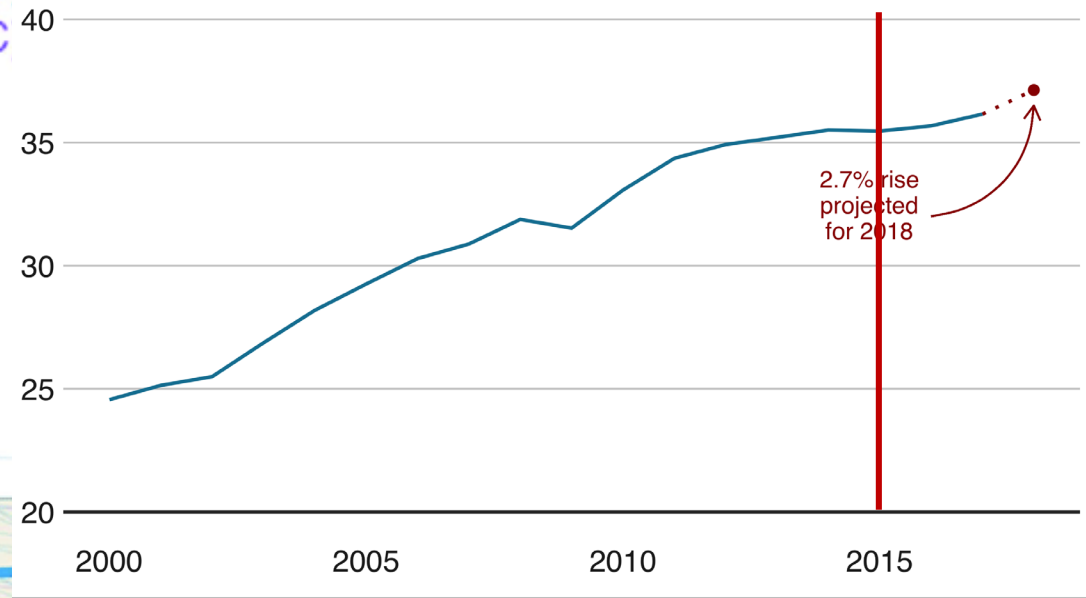
Recent Climate Change Trends, New Scenarios and Sustainable Development Goals

Most recent trend in Climate change scenarios



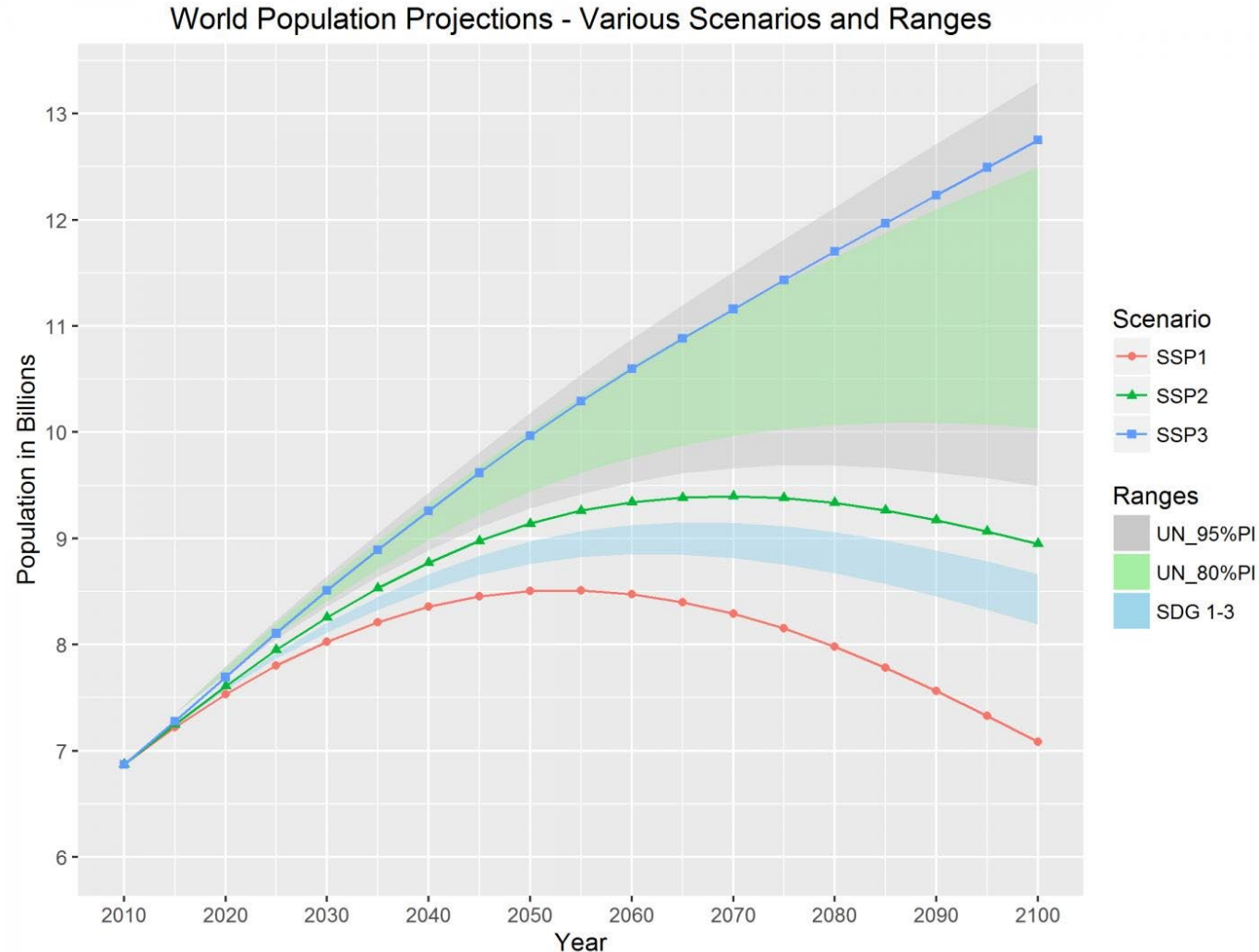
Global CO₂ emissions, 2000-2018

In billion tonnes per year



Sources: Global Carbon Project 2018

Sustainable Development Goals and Population Growth



- Declining child mortality in Sub-Saharan Africa leads to higher population growth
- Emission reduction (short-lived GHGs) leading to clean energy, reducing pollutants, improving health, leading to population growth

Sources: Abel et al 2017