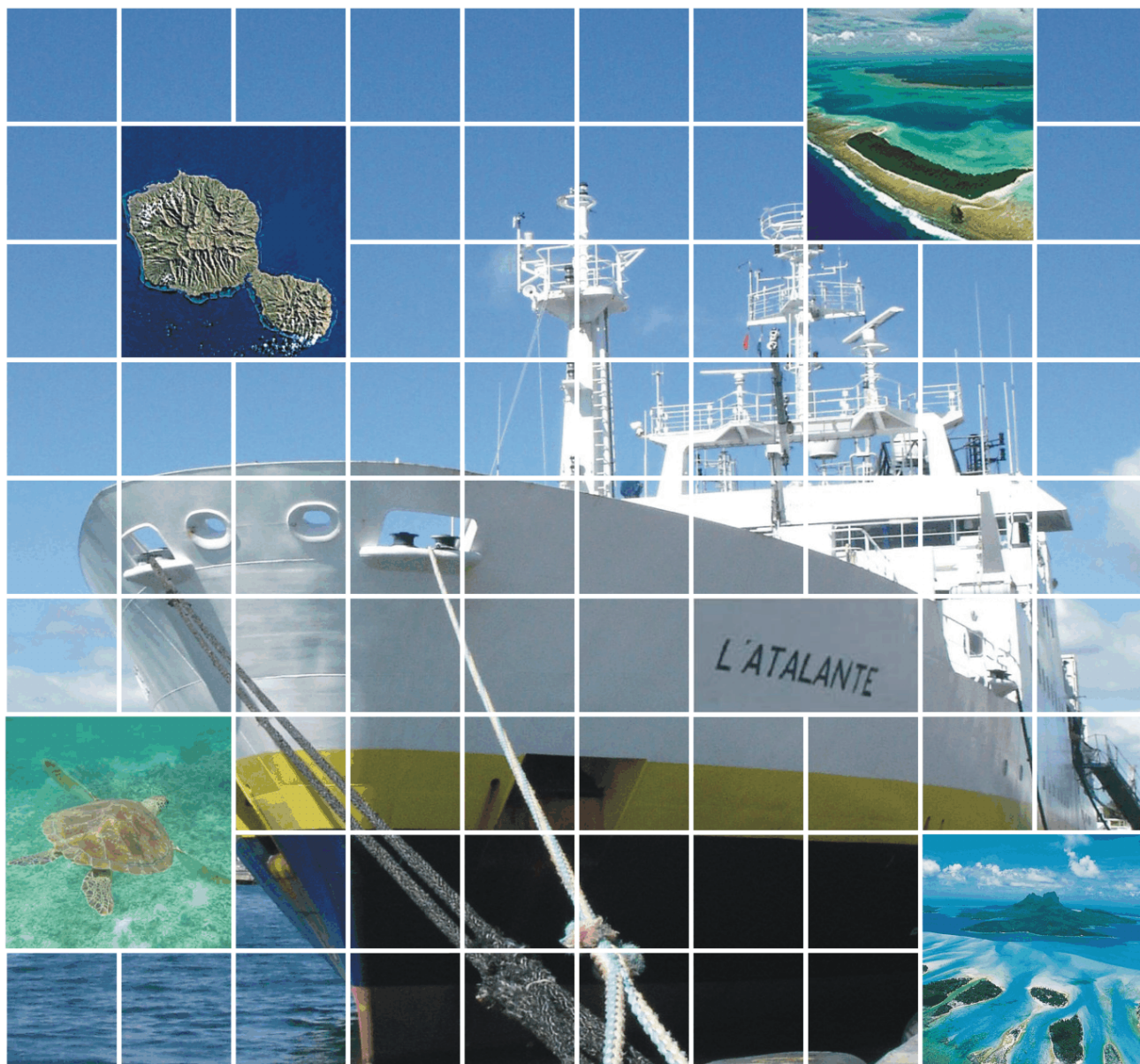




Liberté • Égalité • Fraternité

RÉPUBLIQUE FRANÇAISE



## Le plateau continental français

**Informations préliminaires indicatives sur les limites extérieures du plateau continental,  
conformément à la décision figurant dans le document SPLOS/183  
de la Dix-huitième Réunion des Etat parties  
de la Convention des Nations Unies sur le droit de la mer**

**Polynésie française  
et  
Wallis et Futuna**



### Table des Matières

1	Introduction.....	1
2	Le plateau continental.....	1
3	Dispositions invoquées pour établir les informations préliminaires.....	3
4	Délimitation entre Etats.....	3
5	Indication de la limite extérieure du plateau continental .....	3
	5.1 Polynésie française.....	3
	5.2 Îles Wallis et Futuna .....	4
6	Organismes d'Etat responsables de la préparation de ces informations préliminaires .....	5
7	Etat d'avancement du dossier .....	6
	7.1 Polynésie Française .....	6
	7.2 Îles Wallis et Futuna .....	6
8	Prévision de la date de soumission .....	6
	Annexe 1 : La limite extérieure indicative du plateau continental au large de la Polynésie française.....	7
	Annexe 2 : La limite extérieure indicative du plateau continental au large des îles Wallis et Futuna .....	41

### Table des Illustrations

Figure 1 : La Polynésie française et les îles Wallis et Futuna sont situées dans l'Océan Pacifique sud-ouest.....	2
Figure 2 : Position indicative de la limite extérieure du plateau continental au large de la Polynésie française en noir. En rouge (gras) la limite de 200 milles marins française. Les lignes rouges (fines) montrent les délimitations avec les pays voisins, ainsi que leurs limites indicatives de 200 milles marins.....	4
Figure 3 : Position indicative de la limite extérieure du plateau continental au large des îles Wallis et Futuna en noir. En rouge (gras) la limite de 200 milles marins française. Les lignes rouges (fines) montrent les délimitations avec les pays voisins (les limites n'ayant pas fait l'objet d'accord sont indiquées en tiretés), ainsi que leurs limites indicatives de 200 milles marins.....	5

### Liste des Tableaux

Tableau 1 : Liste indicative des coordonnées définissant la limite extérieure du plateau continental au large de la Polynésie française.....	7
Tableau 2: Liste indicative des coordonnées définissant la limite extérieure du plateau continental au large des îles Wallis et Futuna.....	41

### 1 Introduction

Les informations préliminaires indicatives sur la limite extérieure du plateau continental au-delà de 200 milles marins des lignes de base à partir desquelles est mesurée la largeur de la mer territoriale de la Polynésie française et du territoire des îles Wallis et Futuna sont soumises par le Gouvernement de la République Française au Secrétaire Général des Nations unies, en se référant à la décision de la Réunion des Etats parties de la Convention des Nations Unies sur le droit de la mer (SPLOS/183). Ces informations préliminaires sont fournies sans préjudice des demandes complètes concernant la Polynésie française et les îles Wallis et Futuna, que la France se réserve le droit de déposer à une date ultérieure auprès de la Commission des Limites du Plateau Continental conformément à l'Article 76, paragraphe 8, et à l'article 4 de l'Annexe II de la Convention.

Ce dossier concernant la Polynésie française et les îles Wallis et Futuna s'ajoute à une série de demandes partielles déjà déposées. Il s'agit des demandes déposées le 19 mai 2006 pour la région du Golfe de Gascogne, conjointement avec l'Espagne, l'Irlande et le Royaume Uni de Grande-Bretagne et d'Irlande du Nord, le 22 mai 2007 pour les zones au large de la Guyane et de la Nouvelle-Calédonie et le 5 février 2009 pour les zones au large des Antilles et des Kerguelen. D'autres demandes sont en cours d'élaboration.

### 2 Le plateau continental

Le présent dossier ne traite que de la limite extérieure du plateau continental au large de la Polynésie française et au large des îles Wallis et Futuna. Conformément au paragraphe 3 de l'Annexe I du Règlement intérieur, des demandes pour d'autres parties du plateau continental seront faites ultérieurement sans préjuger du règlement de questions pendantes relatives à la fixation des limites dans ces parties du plateau continental revendiqué par la France et tout autre Etat.

## Le plateau continental français

L'extension du plateau continental au-delà de 200 milles marins des lignes de base de la Polynésie française et des îles Wallis et Futuna se situe au dans l'Océan Pacifique sud-ouest (Figure 1).

Le paragraphe 4 de l'Article 76 stipule que « *aux fins de la convention, l'Etat côtier définit le rebord externe de la marge continentale, lorsque celle-ci s'étend au delà de 200 milles marins des lignes de base ....* ». La France est en mesure de démontrer que le prolongement naturel de son territoire terrestre s'étend au delà de sa mer territoriale jusqu'au rebord de la marge continentale au-delà de 200 milles marins dans les deux zones, et donc de valider le test d'appartenance.

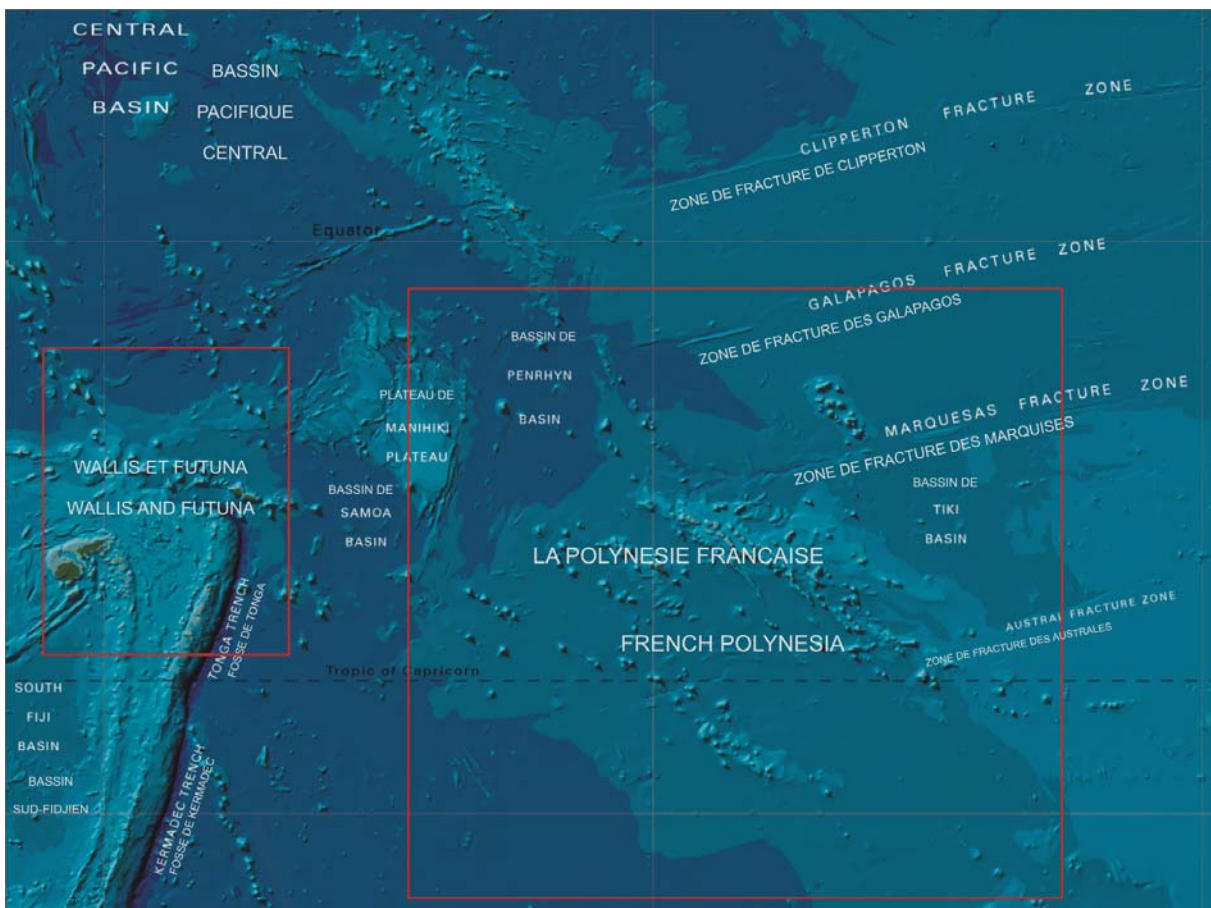


Figure 1 : La Polynésie française et les îles Wallis et Futuna sont situées dans l'Océan Pacifique sud-ouest.

(Projection : Mercator ; Bathymétrie GEBCO)

### **3 Dispositions invoquées pour établir les informations préliminaires**

Les informations préliminaires indicatives de la limite extérieure du plateau continental décrites dans ce document sont fondées sur les dispositions de l'Article 76, 1, 4 (a)(ii), 4 (b), 5 et 7 de la Convention.

### **4 Délimitation entre Etats**

La France considère que, conformément au paragraphe 2, b) de l'Annexe I du Règlement intérieur de la Commission, les présentes informations préliminaires indicatives d'extension du plateau continental au large de la Polynésie française et au large des îles Wallis et Futuna sont fournies sans préjudice de délimitation entre la France et tout autre Etat.

### **5 Indication de la limite extérieure du plateau continental**

#### **5.1 Polynésie française**

La position indicative de la limite extérieure du plateau continental français au large de la Polynésie française s'appuie sur les dispositions des paragraphes 1, 4(a)(ii) (formule de Hedberg) et 5 de l'Article 76. Ainsi, 1251 points fixes ont été déterminés (Figure 2 et Tableau 1). La distance entre les points fixes consécutifs n'excède pas 60 milles marins. Les points fixes sont situés soit à une distance n'excédant pas 350 milles marins des lignes de base à partir desquelles est mesurée la largeur de la mer territoriale de la Polynésie française, soit à une distance n'excédant pas 100 milles marins de l'isobathe de 2500 mètres.

## Le plateau continental français

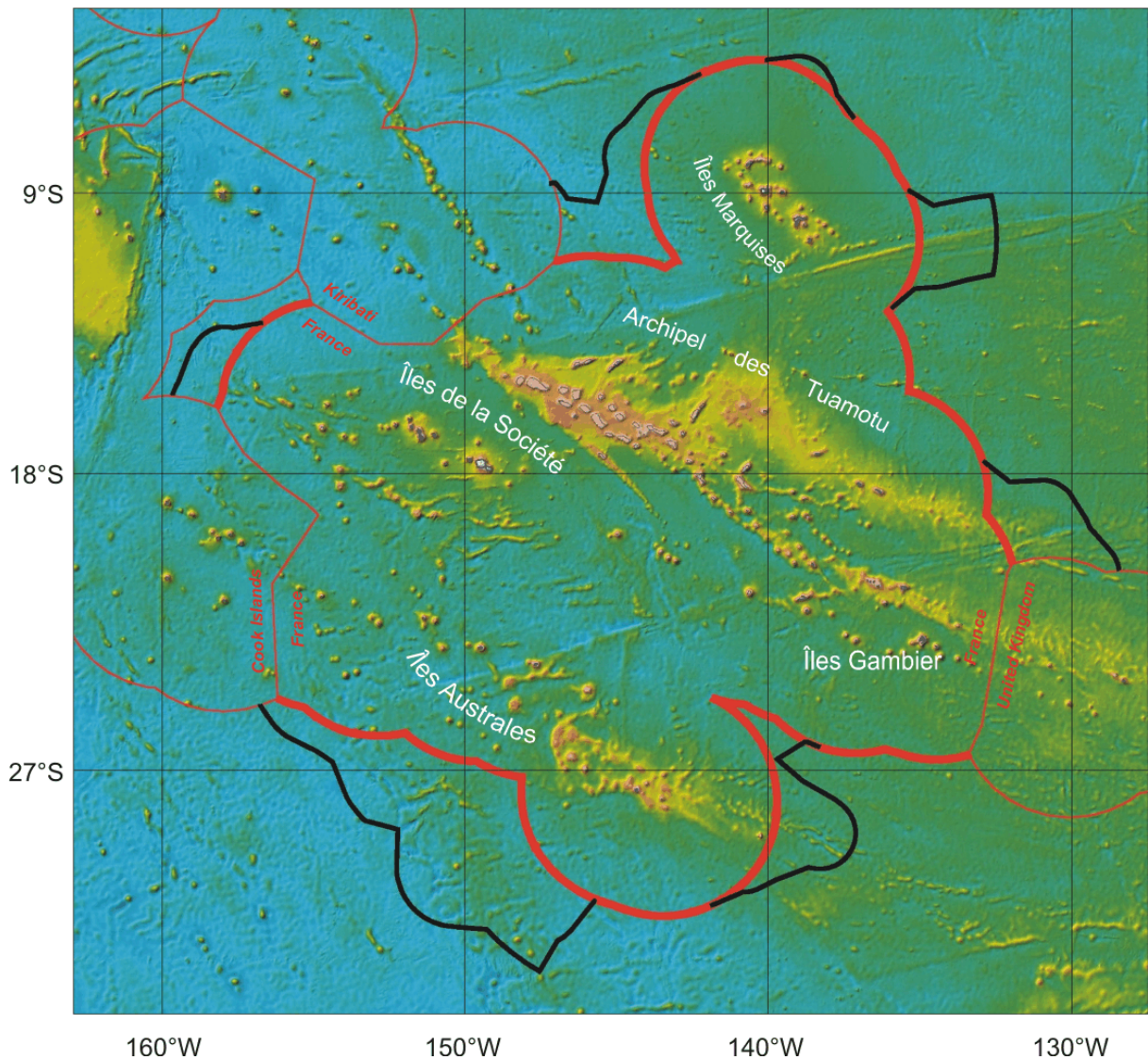


Figure 2 : Position indicative de la limite extérieure du plateau continental au large de la Polynésie française en noir. En rouge (gras) la limite de 200 milles marins française. Les lignes rouges (fines) montrent les délimitations avec les pays voisins, ainsi que leurs limites indicatives de 200 milles marins.

(Projection : Mercator ; Bathymétrie satellitaire)

### 5.2 Îles Wallis et Futuna

La position indicative de la limite extérieure du plateau continental français au large des îles Wallis et Futuna s'appuie sur les dispositions du paragraphe 4(a)(ii) (formule de Hedberg). Ainsi, 9 points fixes ont été déterminés (Figure 3 et Tableau 2). La distance entre les points fixes consécutifs n'excède pas 60 milles marins. Les points fixes sont situés à une distance n'excédant pas 350 milles marins des lignes de base à partir desquelles est mesurée la largeur de la mer territoriale des îles Wallis et Futuna.



## Le plateau continental français

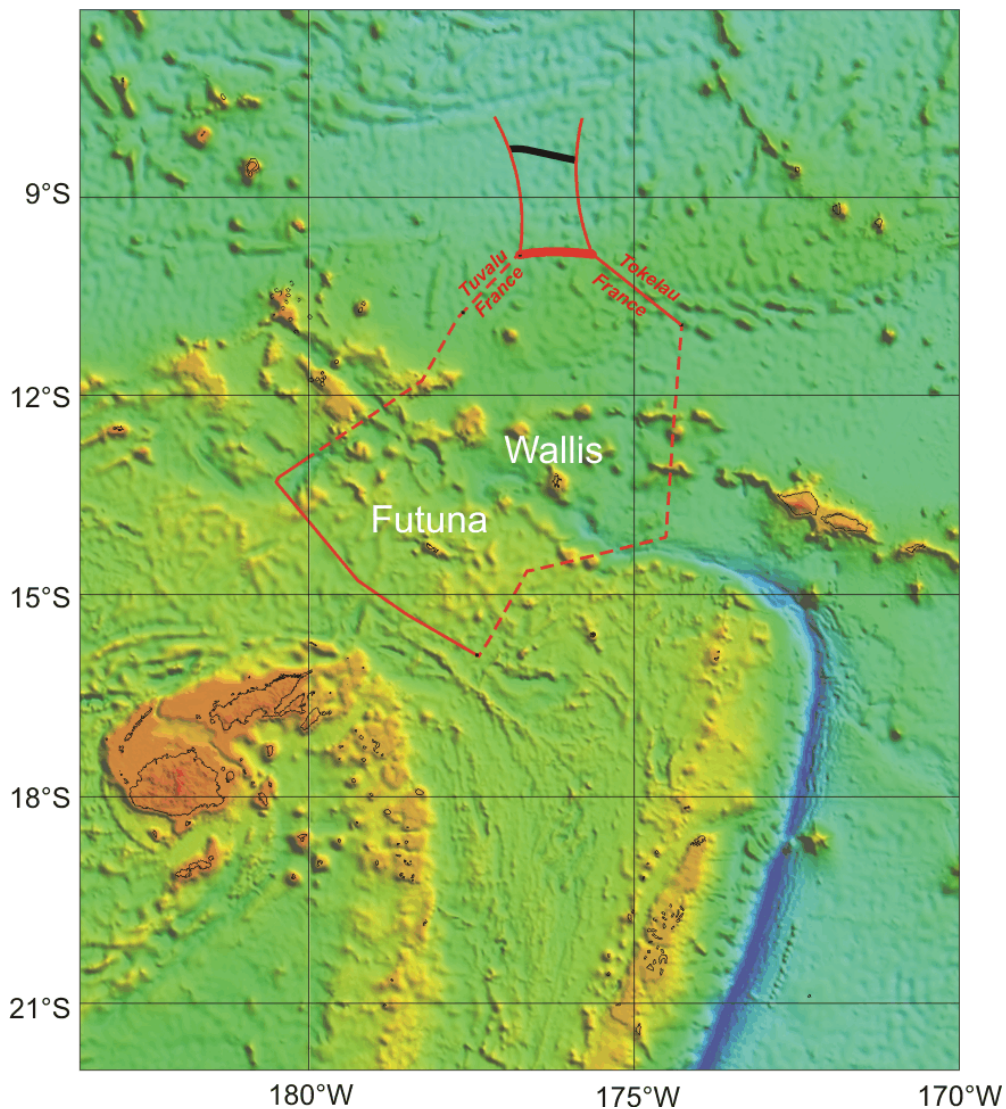


Figure 3 : Position indicative de la limite extérieure du plateau continental au large des îles Wallis et Futuna en noir. En rouge (gras) la limite de 200 milles marins française. Les lignes rouges (fines) montrent les délimitations avec les pays voisins (les limites n'ayant pas fait l'objet d'accord sont indiquées en tiretés), ainsi que leurs limites indicatives de 200 milles marins.

(Projection : Mercator ; Bathymétrie satellitaire)

## 6 Organismes d'Etat responsables de la préparation de ces informations préliminaires

EXTRAPLAC est le programme national pluriannuel d'extension du plateau continental, financé par l'Etat français. Ce document a été préparé par un consortium composé de l'Institut français de recherche pour l'exploitation de la mer (Ifremer), du Service Hydrographique et Océanographique de la Marine (SHOM), de l'Institut Français du Pétrole (IFP) et de l'Institut

## **Le plateau continental français**

polaire français Paul Émile Victor (IPEV), sous la coordination du Secrétariat Général de la Mer.

### **7 Etat d'avancement du dossier**

Le consortium d'EXTRAPLAC travaille depuis 2003 sur l'ensemble des dossiers d'extension du plateau continental français. En ce qui concerne la Polynésie française et les îles Wallis et Futuna, une étude théorique menée en 2003 a montré le bien fondé d'une demande française dans les deux régions. Le prolongement naturel de la masse terrestre s'étend potentiellement au delà des 200 milles marins dans 7 zones autour de la Polynésie française ainsi qu'au nord des îles Wallis et Futuna.

#### **7.1 Polynésie Française**

Suite à l'étude théorique concernant la Polynésie française, l'équipe de projet a évalué les besoins en termes de données supplémentaires nécessaires pour l'instruction d'une demande complète. Il a été jugé nécessaire d'acquérir des données bathymétriques récentes sur des positions clés, pendant une campagne à la mer d'une quarantaine de jours dans cette zone relativement éloignée des routes habituelles des navires océanographiques.

#### **7.2 Îles Wallis et Futuna**

En ce qui concerne les îles Wallis et Futuna, il sera nécessaire d'acquérir des données bathymétriques récentes au nord des îles, pendant une courte campagne à la mer de plusieurs jours.

### **8 Prévision de la date de soumission**

Les travaux à effectuer conduisent à estimer à 4 années le délai utile à la France pour soumettre un dossier complet de demande d'extension du plateau continental pour la Polynésie française et les îles Wallis et Futuna.

## Le plateau continental français

### Annexe 1 : La limite extérieure indicative du plateau continental au large de la Polynésie française

Tableau 1 : Liste indicative des coordonnées définissant la limite extérieure du plateau continental au large de la Polynésie française

Toutes les coordonnées sont exprimées en degrés dans le système géodésique WGS 84

n° du Point Fixe	Latitude Sud	Longitude Ouest	Méthode Article 76	de PF	à PF	Distance m	Distance M
<b>Iles de la Société – Zone ouest</b>							
1	15.4657533	159.5965619	4 (a)(ii)				
2	15.4580930	159.5948169	4 (a)(ii)	1	2	871	0.47
3	15.4418133	159.5908171	4 (a)(ii)	2	3	1852	1.00
4	15.4255997	159.5865367	4 (a)(ii)	3	4	1852	1.00
5	15.4094590	159.5819800	4 (a)(ii)	4	5	1852	1.00
6	15.3933932	159.5771470	4 (a)(ii)	5	6	1852	1.00
7	15.3774069	159.5720401	4 (a)(ii)	6	7	1852	1.00
8	15.3615064	159.5666614	4 (a)(ii)	7	8	1852	1.00
9	15.3456941	159.5610088	4 (a)(ii)	8	9	1852	1.00
10	15.3299742	159.5550867	4 (a)(ii)	9	10	1852	1.00
11	15.3143535	159.5488973	4 (a)(ii)	10	11	1852	1.00
12	15.2988361	159.5424406	4 (a)(ii)	11	12	1852	1.00
13	15.2834223	159.5357212	4 (a)(ii)	12	13	1852	1.00
14	15.2304035	159.5119024	4 (a)(ii)	13	14	6421	3.47
15	15.2151024	159.5049202	4 (a)(ii)	14	15	1852	1.00
16	15.1999135	159.4976776	4 (a)(ii)	15	16	1852	1.00
17	15.1848456	159.4901766	4 (a)(ii)	16	17	1852	1.00
18	15.1699010	159.4824197	4 (a)(ii)	17	18	1852	1.00
19	15.1550840	159.4744090	4 (a)(ii)	18	19	1852	1.00
20	15.1403968	159.4661467	4 (a)(ii)	19	20	1852	1.00
21	15.1258460	159.4576329	4 (a)(ii)	20	21	1852	1.00
22	15.1114339	159.4488743	4 (a)(ii)	21	22	1852	1.00
23	15.0971669	159.4398687	4 (a)(ii)	22	23	1852	1.00
24	15.0830452	159.4306206	4 (a)(ii)	23	24	1852	1.00
25	15.0690775	159.4211344	4 (a)(ii)	24	25	1852	1.00
26	14.1514049	159.0592436	4 (a)(ii)	25	26	109144	58.93
27	14.1357795	159.0530924	4 (a)(ii)	26	27	1852	1.00
28	14.1202581	159.0466761	4 (a)(ii)	27	28	1852	1.00
29	14.1048409	159.0399972	4 (a)(ii)	28	29	1852	1.00

## Le plateau continental français

n° du Point Fixe	Latitude Sud	Longitude Ouest	Méthode Article 76	de PF	à PF	Distance m	Distance M
30	14.0895344	159.0330577	4 (a)(ii)	29	30	1852	1.00
31	14.0743453	159.0258577	4 (a)(ii)	30	31	1852	1.00
32	14.0592713	159.0183994	4 (a)(ii)	31	32	1852	1.00
33	14.0443235	159.0106874	4 (a)(ii)	32	33	1852	1.00
34	14.0295019	159.0027216	4 (a)(ii)	33	34	1852	1.00
35	14.0148109	158.9945042	4 (a)(ii)	34	35	1852	1.00
36	14.0002570	158.9860399	4 (a)(ii)	35	36	1852	1.00
37	13.9858404	158.9773284	4 (a)(ii)	36	37	1852	1.00
38	13.9715699	158.9683745	4 (a)(ii)	37	38	1852	1.00
39	13.9574432	158.9591780	4 (a)(ii)	38	39	1852	1.00
40	13.9434713	158.9497434	4 (a)(ii)	39	40	1852	1.00
41	13.9296522	158.9400731	4 (a)(ii)	40	41	1852	1.00
42	13.9159923	158.9301691	4 (a)(ii)	41	42	1852	1.00
43	13.9024962	158.9200361	4 (a)(ii)	42	43	1852	1.00
44	13.7131662	158.7760811	4 (a)(ii)	43	44	26152	14.12
45	13.6998338	158.7657280	4 (a)(ii)	44	45	1852	1.00
46	13.6866720	158.7551504	4 (a)(ii)	45	46	1852	1.00
47	13.6736851	158.7443526	4 (a)(ii)	46	47	1852	1.00
48	13.6608753	158.7333348	4 (a)(ii)	47	48	1852	1.00
49	13.6482450	158.7221014	4 (a)(ii)	48	49	1852	1.00
50	13.6358006	158.7106546	4 (a)(ii)	49	50	1852	1.00
51	13.6235423	158.6989989	4 (a)(ii)	50	51	1852	1.00
52	13.6114766	158.6871389	4 (a)(ii)	51	52	1852	1.00
53	13.5996059	158.6750745	4 (a)(ii)	52	53	1852	1.00
54	13.5879300	158.6628125	4 (a)(ii)	53	54	1852	1.00
55	13.5764579	158.6503529	4 (a)(ii)	54	55	1852	1.00
56	13.5651873	158.6377001	4 (a)(ii)	55	56	1852	1.00
57	13.5541249	158.6248610	4 (a)(ii)	56	57	1852	1.00
58	13.5432730	158.6118354	4 (a)(ii)	57	58	1852	1.00
59	13.5326359	158.5986257	4 (a)(ii)	58	59	1852	1.00
60	13.5222114	158.5852408	4 (a)(ii)	59	60	1852	1.00
61	13.5120085	158.5716807	4 (a)(ii)	60	61	1852	1.00
62	13.4944165	158.5481179	4 (a)(ii)	61	62	3210	1.73
63	13.4844343	158.5343894	4 (a)(ii)	62	63	1852	1.00
64	13.4746759	158.5204902	4 (a)(ii)	63	64	1852	1.00
65	13.4651457	158.5064316	4 (a)(ii)	64	65	1852	1.00
66	13.4558458	158.4922112	4 (a)(ii)	65	66	1852	1.00
67	13.4467765	158.4778360	4 (a)(ii)	66	67	1852	1.00

## Le plateau continental français

n° du Point Fixe	Latitude Sud	Longitude Ouest	Méthode Article 76	de PF	à PF	Distance m	Distance M
68	13.4379441	158.4633102	4 (a)(ii)	67	68	1852	1.00
69	13.4293489	158.4486362	4 (a)(ii)	68	69	1852	1.00
70	13.4209908	158.4338207	4 (a)(ii)	69	70	1852	1.00
71	13.4128764	158.4188638	4 (a)(ii)	70	71	1852	1.00
72	13.4050058	158.4037743	4 (a)(ii)	71	72	1852	1.00
73	13.3973833	158.3885524	4 (a)(ii)	72	73	1852	1.00
74	13.3900069	158.3732024	4 (a)(ii)	73	74	1852	1.00
75	13.3828831	158.3577312	4 (a)(ii)	74	75	1852	1.00
76	13.3760097	158.3421432	4 (a)(ii)	75	76	1852	1.00
77	13.3693912	158.3264384	4 (a)(ii)	76	77	1852	1.00
78	13.3630298	158.3106258	4 (a)(ii)	77	78	1852	1.00
79	13.3569255	158.2947076	4 (a)(ii)	78	79	1852	1.00
80	13.3510806	158.2786884	4 (a)(ii)	79	80	1852	1.00
81	13.3454972	158.2625727	4 (a)(ii)	80	81	1852	1.00
82	13.3401753	158.2463671	4 (a)(ii)	81	82	1852	1.00
83	13.3351195	158.2300716	4 (a)(ii)	82	83	1852	1.00
84	13.3303274	158.2136931	4 (a)(ii)	83	84	1852	1.00
85	13.3258036	158.1972359	4 (a)(ii)	84	85	1852	1.00
86	13.3169316	158.1638635	4 (a)(ii)	85	86	3741	2.02
87	13.3126758	158.1473345	4 (a)(ii)	86	87	1852	1.00
88	13.3086883	158.1307337	4 (a)(ii)	87	88	1852	1.00
89	13.3049712	158.1140699	4 (a)(ii)	88	89	1852	1.00
90	13.3015268	158.0973433	4 (a)(ii)	89	90	1852	1.00
91	13.2983529	158.0805628	4 (a)(ii)	90	91	1852	1.00
92	13.2954540	158.0637306	4 (a)(ii)	91	92	1852	1.00
93	13.2928277	158.0468512	4 (a)(ii)	92	93	1852	1.00
94	13.2904763	158.0299292	4 (a)(ii)	93	94	1852	1.00
95	13.2883999	158.0129713	4 (a)(ii)	94	95	1852	1.00
96	13.2866006	157.9959796	4 (a)(ii)	95	96	1852	1.00
97	13.2850785	157.9789588	4 (a)(ii)	96	97	1852	1.00
98	13.2838313	157.9619178	4 (a)(ii)	97	98	1852	1.00
99	13.2828612	157.9448565	4 (a)(ii)	98	99	1852	1.00
100	13.2821705	157.9277795	4 (a)(ii)	99	100	1852	1.00
101	13.2817570	157.9106958	4 (a)(ii)	100	101	1852	1.00
102	13.2816206	157.8937581	4 (a)(ii)	101	102	1832	0.99
103	13.2817592	157.8766676	4 (a)(ii)	102	103	1852	1.00
104	13.2822035	157.8433065	4 (a)(ii)	103	104	3608	1.95
105	13.2826193	157.8262227	4 (a)(ii)	104	105	1852	1.00

## Le plateau continental français

n° du Point Fixe	Latitude Sud	Longitude Ouest	Méthode Article 76	de PF	à PF	Distance m	Distance M
106	13.2833144	157.8091480	4 (a)(ii)	105	106	1852	1.00
107	13.2842866	157.7920868	4 (a)(ii)	106	107	1852	1.00
108	13.2855338	157.7750435	4 (a)(ii)	107	108	1852	1.00
109	13.2870603	157.7580249	4 (a)(ii)	108	109	1852	1.00
110	13.2888618	157.7410333	4 (a)(ii)	109	110	1852	1.00
111	13.2909404	157.7240753	4 (a)(ii)	110	111	1852	1.00
112	13.2932940	157.7071533	4 (a)(ii)	111	112	1852	1.00
113	13.2981704	157.6737899	4 (a)(ii)	112	113	3648	1.97
114	13.3007988	157.6569105	4 (a)(ii)	113	114	1852	1.00
115	13.3036999	157.6400783	4 (a)(ii)	114	115	1852	1.00
116	13.3070211	157.6222558	4 (a)(ii)	115	116	1962	1.06
117	13.1400741	156.6196775	1	116	117	110028	59.41
<b>Iles Marquises – Zone nord-ouest</b>							
118	8.6189771	147.2101461	4 (a)(ii)				
119	8.6153541	147.1937249	4 (a)(ii)	118	119	1852	1.00
120	8.6117400	147.1772004	4 (a)(ii)	119	120	1852	1.00
121	8.6082241	147.1607544	4 (a)(ii)	120	121	1852	1.00
122	8.6047060	147.1441783	4 (a)(ii)	121	122	1852	1.01
123	8.6012438	147.1276021	4 (a)(ii)	122	123	1852	1.01
124	8.5978374	147.1111360	4 (a)(ii)	123	124	1852	1.00
125	8.5944712	147.0945598	4 (a)(ii)	124	125	1852	1.00
126	8.5911720	147.0780690	4 (a)(ii)	125	126	1852	1.00
127	8.5878572	147.0614434	4 (a)(ii)	126	127	1852	1.01
128	8.5846429	147.0448179	4 (a)(ii)	127	128	1852	1.01
129	8.5814532	147.0283068	4 (a)(ii)	128	129	1852	1.00
130	8.5800740	147.0209272	4 (a)(ii)	129	130	825	0.45
131	8.8404874	146.7994251	4 (a)(ii)	130	131	37806	20.41
132	8.8533176	146.7886049	4 (a)(ii)	131	132	1852	1.00
133	8.8663216	146.7780025	4 (a)(ii)	132	133	1852	1.00
134	8.8795015	146.7676180	4 (a)(ii)	133	134	1852	1.00
135	8.8928507	146.7574536	4 (a)(ii)	134	135	1852	1.00
136	8.9063670	146.7475159	4 (a)(ii)	135	136	1852	1.00
137	8.9258341	146.7335741	4 (a)(ii)	136	137	2650	1.43
138	8.9395121	146.7238611	4 (a)(ii)	137	138	1852	1.00
139	8.9533482	146.7143793	4 (a)(ii)	138	139	1852	1.00
140	8.9673399	146.7051289	4 (a)(ii)	139	140	1852	1.00
141	8.9814830	146.6961143	4 (a)(ii)	140	141	1852	1.00
142	8.9957729	146.6873378	4 (a)(ii)	141	142	1852	1.00

## Le plateau continental français

n° du Point Fixe	Latitude Sud	Longitude Ouest	Méthode Article 76	de PF	à PF	Distance m	Distance M
143	9.0102073	146.6787993	4 (a)(ii)	142	143	1852	1.00
144	9.0247796	146.6705056	4 (a)(ii)	143	144	1852	1.00
145	9.0394874	146.6624545	4 (a)(ii)	144	145	1852	1.00
146	9.0611395	146.6506955	4 (a)(ii)	145	146	2730	1.47
147	9.0759798	146.6428914	4 (a)(ii)	146	147	1852	1.00
148	9.0909445	146.6353366	4 (a)(ii)	147	148	1852	1.00
149	9.1060335	146.6280333	4 (a)(ii)	148	149	1852	1.00
150	9.2217666	145.6326258	4 (a)(ii)	149	150	109953	59.37
151	8,2706713	145,3210741	4 (a)(ii)	150	151	111087	59,98
152	8.2385274	145.3295298	4 (a)(ii)	151	152	3691	1,99
153	8.2223090	145.3337159	4 (a)(ii)	152	153	1852	1.00
154	8.2060250	145.3376281	4 (a)(ii)	153	154	1852	1.00
155	8.1896777	145.3412685	4 (a)(ii)	154	155	1852	1.00
156	8.1732738	145.3446349	4 (a)(ii)	155	156	1852	1.00
157	8.1568133	145.3477251	4 (a)(ii)	156	157	1852	1.00
158	8.1403050	145.3505391	4 (a)(ii)	157	158	1852	1.00
159	8.1237536	145.3530768	4 (a)(ii)	158	159	1852	1.00
160	7.9172394	145.3843607	4 (a)(ii)	159	160	23205	12.53
161	7.9006474	145.3866222	4 (a)(ii)	160	161	1852	1.00
162	7.8840190	145.3886030	4 (a)(ii)	161	162	1852	1.00
163	7.8582553	145.3913698	4 (a)(ii)	162	163	2879	1.55
164	7.8415960	145.3930743	4 (a)(ii)	163	164	1852	1.00
165	7.8249114	145.3945004	4 (a)(ii)	164	165	1852	1.00
166	7.8082059	145.3956458	4 (a)(ii)	165	166	1852	1.00
167	7.7914841	145.3965149	4 (a)(ii)	166	167	1852	1.00
168	7.7747504	145.3971010	4 (a)(ii)	167	168	1852	1.00
169	7.7580070	145.3974110	4 (a)(ii)	168	169	1852	1.00
170	7.7412630	145.3974379	4 (a)(ii)	169	170	1852	1.00
171	7.7245206	145.3971864	4 (a)(ii)	170	171	1852	1.00
172	7.7077842	145.3966564	4 (a)(ii)	171	172	1852	1.00
173	7.6910583	145.3958456	4 (a)(ii)	172	173	1852	1.00
174	7.6743475	145.3947564	4 (a)(ii)	173	174	1852	1.00
175	7.6576584	145.3933865	4 (a)(ii)	174	175	1852	1.00
176	7.5499755	145.3831030	4 (a)(ii)	175	176	12019	6.49
177	7.5333106	145.3814569	4 (a)(ii)	176	177	1852	1.00
178	7.5166764	145.3795322	4 (a)(ii)	177	178	1852	1.00
179	7.5000753	145.3773314	4 (a)(ii)	178	179	1852	1.00
180	7.4835138	145.3748543	4 (a)(ii)	179	180	1852	1.00

## Le plateau continental français

n° du Point Fixe	Latitude Sud	Longitude Ouest	Méthode Article 76	de PF	à PF	Distance m	Distance M
181	7.4669965	145.3720987	4 (a)(ii)	180	181	1852	1.00
182	7.4505279	145.3690714	4 (a)(ii)	181	182	1852	1.00
183	7.4341102	145.3657678	4 (a)(ii)	182	183	1852	1.00
184	7.4177502	145.3621903	4 (a)(ii)	183	184	1852	1.00
185	7.4014524	145.3583410	4 (a)(ii)	184	185	1852	1.00
186	7.3852190	145.3542200	4 (a)(ii)	185	186	1852	1.00
187	7.3690589	145.3498294	4 (a)(ii)	186	187	1852	1.00
188	7.3529722	145.3451717	4 (a)(ii)	187	188	1852	1.00
189	7.3369657	145.3402444	4 (a)(ii)	188	189	1852	1.00
190	7.3210438	145.3350522	4 (a)(ii)	189	190	1852	1.00
191	7.3052087	145.3295949	4 (a)(ii)	190	191	1852	1.00
192	7.2894696	145.3238726	4 (a)(ii)	191	192	1852	1.00
193	7.2738240	145.3178921	4 (a)(ii)	192	193	1852	1.00
194	7.2582833	145.3116488	4 (a)(ii)	193	194	1852	1.00
195	7.2428474	145.3051495	4 (a)(ii)	194	195	1852	1.00
196	7.2275209	145.2983942	4 (a)(ii)	195	196	1852	1.00
197	7.2123105	145.2913828	4 (a)(ii)	196	197	1852	1.00
198	7.1972163	145.2841199	4 (a)(ii)	197	198	1852	1.00
199	7.1822471	145.2766078	4 (a)(ii)	198	199	1852	1.00
200	7.1674030	145.2688463	4 (a)(ii)	199	200	1852	1.00
201	7.1526908	145.2608378	4 (a)(ii)	200	201	1852	1.00
202	7.1381149	145.2525868	4 (a)(ii)	201	202	1852	1.00
203	7.1236776	145.2440932	4 (a)(ii)	202	203	1852	1.00
204	7.1093835	145.2353616	4 (a)(ii)	203	204	1852	1.00
205	7.0952369	145.2263942	4 (a)(ii)	204	205	1852	1.00
206	7.0812403	145.2171909	4 (a)(ii)	205	206	1852	1.00
207	7.0673980	145.2077564	4 (a)(ii)	206	207	1852	1.00
208	7.0537168	145.1980928	4 (a)(ii)	207	208	1852	1.00
209	7.0401967	145.1882023	4 (a)(ii)	208	209	1852	1.00
210	7.0268423	145.1780895	4 (a)(ii)	209	210	1852	1.00
211	7.0136581	145.1677567	4 (a)(ii)	210	211	1852	1.00
212	7.0006484	145.1572037	4 (a)(ii)	211	212	1852	1.00
213	6.9878157	145.1464374	4 (a)(ii)	212	213	1852	1.00
214	6.9751644	145.1354577	4 (a)(ii)	213	214	1852	1.00
215	6.9626967	145.1242715	4 (a)(ii)	214	215	1852	1.00
216	6.9504172	145.1128763	4 (a)(ii)	215	216	1852	1.00
217	6.9383282	145.1012813	4 (a)(ii)	216	217	1852	1.00
218	6.9049632	145.0683760	4 (a)(ii)	217	218	5189	2.80



## Le plateau continental français

n° du Point Fixe	Latitude Sud	Longitude Ouest	Méthode Article 76	de PF	à PF	Distance m	Distance M
219	6.8930683	145.0565834	4 (a)(ii)	218	219	1852	1.00
220	6.8813727	145.0445909	4 (a)(ii)	219	220	1852	1.00
221	6.8698767	145.0324075	4 (a)(ii)	220	221	1852	1.00
222	6.8585846	145.0200354	4 (a)(ii)	221	222	1852	1.00
223	6.8475009	145.0074770	4 (a)(ii)	222	223	1852	1.00
224	6.8366258	144.9947366	4 (a)(ii)	223	224	1852	1.00
225	6.8103045	144.9632687	4 (a)(ii)	224	225	4540	2.45
226	6.7996440	144.9503486	4 (a)(ii)	225	226	1852	1.00
227	6.7925997	144.9417001	4 (a)(ii)	226	227	1234	0.67
228	6.6333038	144.7459145	4 (a)(ii)	227	228	27931	15.08
229	5.8867751	144.1096940	4 (a)(ii)	228	229	108720	58.70
230	5.8741207	144.0987413	4 (a)(ii)	229	230	1852	1.00
231	5.8616482	144.0875797	4 (a)(ii)	230	231	1852	1.00
232	5.8493644	144.0762137	4 (a)(ii)	231	232	1852	1.00
233	5.8372736	144.0646457	4 (a)(ii)	232	233	1852	1.00
234	5.8253760	144.0528800	4 (a)(ii)	233	234	1852	1.00
235	5.8136761	144.0409167	4 (a)(ii)	234	235	1852	1.00
236	5.8021762	144.0287602	4 (a)(ii)	235	236	1852	1.00
237	5.7908806	144.0164151	4 (a)(ii)	236	237	1852	1.00
238	5.7797941	144.0038836	4 (a)(ii)	237	238	1852	1.00
239	5.7689165	143.9911725	4 (a)(ii)	238	239	1852	1.00
240	5.7438562	143.9611193	4 (a)(ii)	239	240	4335	2.34
241	5.7331916	143.9482285	4 (a)(ii)	240	241	1852	1.00
242	5.7227450	143.9351625	4 (a)(ii)	241	242	1852	1.00
243	5.7125164	143.9219259	4 (a)(ii)	242	243	1852	1.00
244	5.7025103	143.9085185	4 (a)(ii)	243	244	1852	1.00
245	5.6927290	143.8949494	4 (a)(ii)	244	245	1852	1.00
246	5.6831748	143.8812187	4 (a)(ii)	245	246	1852	1.00
247	5.6738521	143.8673330	4 (a)(ii)	246	247	1852	1.00
248	5.6647610	143.8532946	4 (a)(ii)	247	248	1852	1.00
249	5.6559037	143.8391057	4 (a)(ii)	248	249	1852	1.00
250	5.6472871	143.8247731	4 (a)(ii)	249	250	1852	1.00
251	5.6389087	143.8102990	4 (a)(ii)	250	251	1852	1.00
252	5.6307733	143.7956879	4 (a)(ii)	251	252	1852	1.00
253	5.6228829	143.7809443	4 (a)(ii)	252	253	1852	1.00
254	5.6152399	143.7660704	4 (a)(ii)	253	254	1852	1.00
255	5.6078444	143.7510730	4 (a)(ii)	254	255	1852	1.00
256	5.6007007	143.7359566	4 (a)(ii)	255	256	1852	1.00

## Le plateau continental français

n° du Point Fixe	Latitude Sud	Longitude Ouest	Méthode Article 76	de PF	à PF	Distance m	Distance M
257	5.5938090	143.7207212	4 (a)(ii)	256	257	1852	1.00
258	5.5871736	143.7053757	4 (a)(ii)	257	258	1852	1.00
259	5.5807947	143.6899225	4 (a)(ii)	258	259	1852	1.00
260	5.5746723	143.6743636	4 (a)(ii)	259	260	1852	1.00
261	5.5688130	143.6587060	4 (a)(ii)	260	261	1852	1.00
262	5.4468218	143.3250268	4 (a)(ii)	261	262	39318	21.23
263	5.4412223	143.3092771	4 (a)(ii)	262	263	1852	1.00
264	5.4358861	143.2934375	4 (a)(ii)	263	264	1852	1.00
265	5.4308154	143.2775126	4 (a)(ii)	264	265	1852	1.00
266	5.4260103	143.2615047	4 (a)(ii)	265	266	1852	1.00
267	5.4214729	143.2454203	4 (a)(ii)	266	267	1852	1.00
268	5.4172056	143.2292619	4 (a)(ii)	267	268	1852	1.00
269	5.4132062	143.2130361	4 (a)(ii)	268	269	1852	1.00
270	5.4094790	143.1967451	4 (a)(ii)	269	270	1852	1.00
271	5.4060241	143.1803935	4 (a)(ii)	270	271	1852	1.00
272	5.4028416	143.1639881	4 (a)(ii)	271	272	1852	1.00
273	5.3999336	143.1475332	4 (a)(ii)	272	273	1852	1.00
274	5.3973002	143.1310311	4 (a)(ii)	273	274	1852	1.00
275	5.3949436	143.1144886	4 (a)(ii)	274	275	1852	1.00
276	4.9956659	142.2140533	1	275	276	109077	58.90
<b>Iles Marquises – Zone nord</b>							
277	4.5455789	140.1273702	1				
278	4.4247492	139.1443281	4 (a)(ii)	277	278	109726	59.25
279	4.4226687	139.1277721	4 (a)(ii)	278	279	1852	1.00
280	4.4208631	139.1111847	4 (a)(ii)	279	280	1852	1.00
281	4.4193348	139.0945682	4 (a)(ii)	280	281	1852	1.00
282	4.4180838	139.0779291	4 (a)(ii)	281	282	1852	1.00
283	4.4171123	139.0612721	4 (a)(ii)	282	283	1852	1.00
284	4.4164180	139.0446016	4 (a)(ii)	283	284	1852	1.00
285	4.4160010	139.0279222	4 (a)(ii)	284	285	1852	1.00
286	4.4158657	139.0113864	4 (a)(ii)	285	286	1832	0.99
287	4.4160032	138.9947025	4 (a)(ii)	286	287	1852	1.00
288	4.4164225	138.9780230	4 (a)(ii)	287	288	1852	1.00
289	4.4171190	138.9613525	4 (a)(ii)	288	289	1852	1.00
290	4.4180928	138.9446955	4 (a)(ii)	289	290	1852	1.00
291	4.4193461	138.9280564	4 (a)(ii)	290	291	1852	1.00
292	4.4208766	138.9114421	4 (a)(ii)	291	292	1852	1.00
293	4.4226844	138.8948547	4 (a)(ii)	292	293	1852	1.00

## Le plateau continental français

n° du Point Fixe	Latitude Sud	Longitude Ouest	Méthode Article 76	de PF	à PF	Distance m	Distance M
294	4.4247695	138.8782988	4 (a)(ii)	293	294	1852	1.00
295	4.4271318	138.8617810	4 (a)(ii)	294	295	1852	1.00
296	4.4297668	138.8453036	4 (a)(ii)	295	296	1852	1.00
297	4.4326790	138.8288712	4 (a)(ii)	296	297	1852	1.00
298	4.4358640	138.8124904	4 (a)(ii)	297	298	1852	1.00
299	4.4393240	138.7961658	4 (a)(ii)	298	299	1852	1.00
300	4.4430545	138.7798995	4 (a)(ii)	299	300	1852	1.00
301	4.4508737	138.7465361	4 (a)(ii)	300	301	3797	2.05
302	4.4548745	138.7303328	4 (a)(ii)	301	302	1852	1.00
303	4.4591481	138.7141990	4 (a)(ii)	302	303	1852	1.00
304	4.4636876	138.6981394	4 (a)(ii)	303	304	1852	1.00
305	4.4684976	138.6821539	4 (a)(ii)	304	305	1852	1.00
306	4.4735713	138.6662537	4 (a)(ii)	305	306	1852	1.00
307	4.4789108	138.6504388	4 (a)(ii)	306	307	1852	1.00
308	4.4845141	138.6347138	4 (a)(ii)	307	308	1852	1.00
309	4.4903787	138.6190831	4 (a)(ii)	308	309	1852	1.00
310	4.4965048	138.6035535	4 (a)(ii)	309	310	1852	1.00
311	4.5011207	138.5923268	4 (a)(ii)	310	311	1345	0.73
312	4.5053173	138.5822679	4 (a)(ii)	311	312	1208	0.65
313	4.5119571	138.5669494	4 (a)(ii)	312	313	1852	1.00
314	4.5188538	138.5517409	4 (a)(ii)	313	314	1852	1.00
315	4.5260028	138.5366515	4 (a)(ii)	314	315	1852	1.00
316	4.5334020	138.5216811	4 (a)(ii)	315	316	1852	1.00
317	4.5410512	138.5068342	4 (a)(ii)	316	317	1852	1.00
318	4.5489459	138.4921175	4 (a)(ii)	317	318	1852	1.00
319	4.5570863	138.4775334	4 (a)(ii)	318	319	1852	1.00
320	4.5654677	138.4630885	4 (a)(ii)	319	320	1852	1.00
321	4.5740924	138.4487805	4 (a)(ii)	320	321	1852	1.00
322	4.5829513	138.4346186	4 (a)(ii)	321	322	1852	1.00
323	4.5920468	138.4206071	4 (a)(ii)	322	323	1852	1.00
324	4.6013765	138.4067461	4 (a)(ii)	323	324	1852	1.00
325	4.6109359	138.3930423	4 (a)(ii)	324	325	1852	1.00
326	4.6207206	138.3795002	4 (a)(ii)	325	326	1852	1.00
327	4.6348633	138.3602695	4 (a)(ii)	326	327	2647	1.43
328	4.6448752	138.3468891	4 (a)(ii)	327	328	1852	1.00
329	4.6551078	138.3336772	4 (a)(ii)	328	329	1852	1.00
330	4.6655611	138.3206359	4 (a)(ii)	329	330	1852	1.00
331	4.6762283	138.3077720	4 (a)(ii)	330	331	1852	1.00

## Le plateau continental français

n° du Point Fixe	Latitude Sud	Longitude Ouest	Méthode Article 76	de PF	à PF	Distance m	Distance M
332	4.6914154	138.2895811	4 (a)(ii)	331	332	2628	1.42
333	4.7022985	138.2768924	4 (a)(ii)	332	333	1852	1.00
334	4.7133909	138.2643878	4 (a)(ii)	333	334	1852	1.00
335	4.7246905	138.2520675	4 (a)(ii)	334	335	1852	1.00
336	4.7361949	138.2399380	4 (a)(ii)	335	336	1852	1.00
337	4.7478997	138.2279993	4 (a)(ii)	336	337	1852	1.00
338	4.7598025	138.2162561	4 (a)(ii)	337	338	1852	1.00
339	4.7718989	138.2047128	4 (a)(ii)	338	339	1852	1.00
340	4.7841866	138.1933715	4 (a)(ii)	339	340	1852	1.00
341	4.7966632	138.1822347	4 (a)(ii)	340	341	1852	1.00
342	4.8065579	138.1735277	4 (a)(ii)	341	342	1462	0.79
343	4.8192166	138.1625997	4 (a)(ii)	342	343	1852	1.00
344	4.8320576	138.1518828	4 (a)(ii)	343	344	1852	1.00
345	4.8450763	138.1413793	4 (a)(ii)	344	345	1852	1.00
346	4.8582682	138.1310958	4 (a)(ii)	345	346	1852	1.00
347	4.8716288	138.1210302	4 (a)(ii)	346	347	1852	1.00
348	4.8851580	138.1111892	4 (a)(ii)	347	348	1852	1.00
349	4.8988470	138.1015727	4 (a)(ii)	348	349	1852	1.00
350	4.9126978	138.0921853	4 (a)(ii)	349	350	1852	1.00
351	4.9267015	138.0830292	4 (a)(ii)	350	351	1852	1.00
352	4.9408558	138.0741045	4 (a)(ii)	351	352	1852	1.00
353	4.9551562	138.0654177	4 (a)(ii)	352	353	1852	1.00
354	5.1103837	137.9721322	4 (a)(ii)	353	354	20103	10.85
355	5.1248267	137.9636791	4 (a)(ii)	354	355	1852	1.00
356	5.1364187	137.9570203	4 (a)(ii)	355	356	1484	0.80
357	5.1510030	137.9488097	4 (a)(ii)	356	357	1852	1.00
358	5.1657220	137.9408439	4 (a)(ii)	357	358	1852	1.00
359	5.1805712	137.9331206	4 (a)(ii)	358	359	1852	1.00
360	5.1955484	137.9256466	4 (a)(ii)	359	360	1852	1.00
361	5.2280076	137.9095690	4 (a)(ii)	360	361	4022	2.17
362	5.2431075	137.9023443	4 (a)(ii)	361	362	1852	1.00
363	5.2583241	137.8953712	4 (a)(ii)	362	363	1852	1.00
364	5.2736574	137.8886518	4 (a)(ii)	363	364	1852	1.00
365	5.2890984	137.8821861	4 (a)(ii)	364	365	1852	1.00
366	5.3046448	137.8759788	4 (a)(ii)	365	366	1852	1.00
367	5.3202943	137.8700297	4 (a)(ii)	366	367	1852	1.00
368	5.3360402	137.8643433	4 (a)(ii)	367	368	1852	1.00
369	5.4703939	137.8166495	4 (a)(ii)	368	369	15834	8.55

## Le plateau continental français

n° du Point Fixe	Latitude Sud	Longitude Ouest	Méthode Article 76	de PF	à PF	Distance m	Distance M
370	5.4862326	137.8112215	4 (a)(ii)	369	370	1852	1.00
371	5.5021609	137.8060584	4 (a)(ii)	370	371	1852	1.00
372	5.5181721	137.8011603	4 (a)(ii)	371	372	1852	1.00
373	5.5342615	137.7965295	4 (a)(ii)	372	373	1852	1.00
374	5.5504271	137.7921660	4 (a)(ii)	373	374	1852	1.00
375	5.5666642	137.7880719	4 (a)(ii)	374	375	1852	1.00
376	5.5829660	137.7842473	4 (a)(ii)	375	376	1852	1.00
377	5.6163289	137.7767958	4 (a)(ii)	376	377	3798	2.05
378	5.6326924	137.7732429	4 (a)(ii)	377	378	1852	1.00
379	5.6830533	137.7631818	4 (a)(ii)	378	379	5706	3.08
380	6.4795041	137.1769390	1	379	380	109675	59.22
<b>Iles Australes – Zone sud-ouest</b>							
381	30.7670093	145.6829786	1				
382	31.5423946	146.3998589	4 (a)(ii)	381	382	109868	59.32
383	31.5555609	146.4118559	4 (a)(ii)	382	383	1852	1.00
384	31.5685561	146.4241112	4 (a)(ii)	383	384	1852	1.00
385	31.5813707	146.4366203	4 (a)(ii)	384	385	1852	1.00
386	31.5940048	146.4493831	4 (a)(ii)	385	386	1852	1.00
387	31.6218255	146.4783133	4 (a)(ii)	386	387	4129	2.23
388	31.6342753	146.4913254	4 (a)(ii)	387	388	1852	1.00
389	31.6465352	146.5045823	4 (a)(ii)	388	389	1852	1.00
390	31.6586032	146.5180795	4 (a)(ii)	389	390	1852	1.00
391	31.6704757	146.5318125	4 (a)(ii)	390	391	1852	1.00
392	31.6821508	146.5457790	4 (a)(ii)	391	392	1852	1.00
393	31.6936228	146.5599747	4 (a)(ii)	392	393	1852	1.00
394	31.7048879	146.5743949	4 (a)(ii)	393	394	1852	1.00
395	31.7771479	146.6675097	4 (a)(ii)	394	395	11912	6.43
396	31.7882052	146.6821613	4 (a)(ii)	395	396	1852	1.00
397	31.7990501	146.6970306	4 (a)(ii)	396	397	1852	1.00
398	31.8096809	146.7121156	4 (a)(ii)	397	398	1852	1.00
399	31.8200957	146.7274072	4 (a)(ii)	398	399	1852	1.00
400	31.8302869	146.7429031	4 (a)(ii)	399	400	1852	1.00
401	31.8402546	146.7585989	4 (a)(ii)	400	401	1852	1.00
402	31.8499969	146.7744924	4 (a)(ii)	401	402	1852	1.00
403	31.8595082	146.7905744	4 (a)(ii)	402	403	1852	1.00
404	31.8652544	146.8005794	4 (a)(ii)	403	404	1140	0.62
405	31.8724164	146.8131873	4 (a)(ii)	404	405	1431	0.77
406	31.8814616	146.8296399	4 (a)(ii)	405	406	1852	1.00

## Le plateau continental français

n° du Point Fixe	Latitude Sud	Longitude Ouest	Méthode Article 76	de PF	à PF	Distance m	Distance M
407	31.8902683	146.8462700	4 (a)(ii)	406	407	1852	1.00
408	31.8988366	146.8630730	4 (a)(ii)	407	408	1852	1.00
409	31.9071627	146.8800444	4 (a)(ii)	408	409	1852	1.00
410	31.9152429	146.8971798	4 (a)(ii)	409	410	1852	1.00
411	31.9230772	146.9144723	4 (a)(ii)	410	411	1852	1.00
412	31.9306618	146.9319199	4 (a)(ii)	411	412	1852	1.00
413	32.7800218	147.5317407	4 (a)(ii)	412	413	109899	59.34
414	32.7856106	147.5356573	5	413	414	721	0.39
415	32.7703515	147.5676621	5	414	415	3437	1.86
416	32.7626573	147.5837509	5	415	416	1729	0.93
417	32.7543382	147.6008818	5	416	417	1852	1.00
418	32.7459214	147.6179430	5	417	418	1852	1.00
419	32.7374052	147.6349324	5	418	419	1852	1.00
420	32.7182402	147.6730457	5	419	420	4151	2.24
421	32.7118231	147.6857479	5	420	421	1385	0.75
422	32.7032105	147.7026631	5	421	422	1852	1.00
423	32.6999559	147.7090142	5	422	423	695	0.38
424	32.6912454	147.7258576	5	423	424	1852	1.00
425	32.6824390	147.7426292	5	424	425	1852	1.00
426	32.6566149	147.7916884	5	425	426	5412	2.92
427	32.6526252	147.7992545	5	426	427	835	0.45
428	32.6437219	147.8159452	5	427	428	1852	1.00
429	32.6043738	147.8885628	5	428	429	8081	4.36
430	32.5952793	147.9051007	5	429	430	1852	1.00
431	32.5860888	147.9215646	5	430	431	1852	1.00
432	32.5768023	147.9379521	5	431	432	1852	1.00
433	32.5674236	147.9542633	5	432	433	1852	1.00
434	32.5037922	148.0634176	5	433	434	12432	6.71
435	32.4943181	148.0796389	5	434	435	1852	1.00
436	32.4847517	148.0957839	5	435	436	1852	1.00
437	32.4750929	148.1118480	5	436	437	1852	1.00
438	32.4653417	148.1278335	5	437	438	1852	1.00
439	32.4420064	148.1658255	5	438	439	4406	2.38
440	32.4320573	148.1820087	5	439	440	1878	1.01
441	32.4222137	148.1979089	5	440	441	1852	1.00
442	32.3986080	148.2358896	5	441	442	4424	2.39
443	32.3888293	148.2515652	5	442	443	1829	0.99
444	32.3788953	148.2673778	5	443	444	1852	1.00

## Le plateau continental français

n° du Point Fixe	Latitude Sud	Longitude Ouest	Méthode Article 76	de PF	à PF	Distance m	Distance M
445	32.3688686	148.2831096	5	444	445	1852	1.00
446	32.3525693	148.3084174	5	445	446	2987	1.61
447	32.3345930	148.3362337	5	446	447	3288	1.78
448	32.3244755	148.3518756	5	447	448	1852	1.00
449	32.2901867	148.4042833	5	448	449	6224	3.36
450	32.2799803	148.4198354	5	449	450	1852	1.00
451	32.2696850	148.4353066	5	450	451	1852	1.00
452	32.2329168	148.4900971	5	451	452	6573	3.55
453	32.2225321	148.5054763	5	452	453	1852	1.00
454	32.1857502	148.5595481	5	453	454	6523	3.52
455	32.1752761	148.5748352	5	454	455	1852	1.00
456	32.1383909	148.6283928	5	455	456	6495	3.51
457	32.1278290	148.6435900	5	456	457	1852	1.00
458	32.1171799	148.6586997	5	457	458	1852	1.00
459	32.1064436	148.6737240	5	458	459	1852	1.00
460	32.0956199	148.6886585	5	459	460	1852	1.00
461	32.0864411	148.7012798	5	460	461	1566	0.85
462	32.0573978	148.7410460	5	461	462	4943	2.67
463	32.0464899	148.7558862	5	462	463	1852	1.00
464	32.0354945	148.7706387	5	463	464	1852	1.00
465	32.0244136	148.7853015	5	464	465	1852	1.00
466	31.9851203	148.8370445	5	465	466	6545	3.53
467	31.9739567	148.8516084	5	466	467	1852	1.00
468	31.9346454	148.9028371	5	467	468	6512	3.52
469	31.9233970	148.9173067	5	468	469	1852	1.00
470	31.9120649	148.9316842	5	469	470	1852	1.00
471	31.9006490	148.9459674	5	470	471	1852	1.00
472	31.8891513	148.9601586	5	471	472	1852	1.00
473	31.8775734	148.9742576	5	472	473	1852	1.00
474	31.8659118	148.9882601	5	473	474	1852	1.00
475	31.8541700	149.0021705	5	474	475	1852	1.00
476	31.8123696	149.0515756	5	475	476	6582	3.55
477	31.8005481	149.0653850	5	476	477	1852	1.00
478	31.7886463	149.0790955	5	477	478	1852	1.00
479	31.7766644	149.0927117	5	478	479	1852	1.00
480	31.7646061	149.1062291	5	479	480	1852	1.00
481	31.7423291	149.1310428	5	480	481	3410	1.84
482	31.7218165	149.1538645	5	481	482	3138	1.69

## Le plateau continental français

n° du Point Fixe	Latitude Sud	Longitude Ouest	Méthode Article 76	de PF	à PF	Distance m	Distance M
483	31.7096800	149.1672786	5	482	483	1852	1.00
484	31.6974650	149.1805962	5	483	484	1852	1.00
485	31.6851735	149.1938126	5	484	485	1852	1.00
486	31.6517434	149.2293455	5	485	486	5009	2.70
487	31.6393747	149.2424586	5	486	487	1852	1.00
488	31.6290258	149.2534046	5	487	488	1548	0.84
489	31.6165830	149.2664167	5	488	489	1852	1.00
490	31.5395826	150.4215940	4 (a)(ii)	489	490	109690	59.23
491	31.5381669	150.4410223	4 (a)(ii)	490	491	1852	1.00
492	31.5365839	150.4604349	4 (a)(ii)	491	492	1852	1.00
493	31.5348297	150.4798251	4 (a)(ii)	492	493	1852	1.00
494	31.5329062	150.4991950	4 (a)(ii)	493	494	1852	1.00
495	31.5308153	150.5185380	4 (a)(ii)	494	495	1852	1.00
496	31.5285569	150.5378562	4 (a)(ii)	495	496	1852	1.00
497	31.5261274	150.5571475	4 (a)(ii)	496	497	1852	1.00
498	31.5235323	150.5764074	4 (a)(ii)	497	498	1852	1.00
499	31.5207697	150.5956336	4 (a)(ii)	498	499	1852	1.00
500	31.5178378	150.6148261	4 (a)(ii)	499	500	1852	1.00
501	31.5147403	150.6339827	4 (a)(ii)	500	501	1852	1.00
502	31.5114754	150.6531011	4 (a)(ii)	501	502	1852	1.00
503	31.5080448	150.6721791	4 (a)(ii)	502	503	1852	1.00
504	31.5044487	150.6912144	4 (a)(ii)	503	504	1852	1.00
505	31.5006850	150.7102047	4 (a)(ii)	504	505	1852	1.00
506	31.4967576	150.7291502	4 (a)(ii)	505	506	1852	1.00
507	31.4956396	150.7344503	4 (a)(ii)	506	507	517	0.28
508	31.4915465	150.7533463	4 (a)(ii)	507	508	1852	1.00
509	31.4872896	150.7721930	4 (a)(ii)	508	509	1852	1.00
510	31.4828689	150.7909858	4 (a)(ii)	509	510	1852	1.00
511	31.4782844	150.8097246	4 (a)(ii)	510	511	1852	1.00
512	31.4735361	150.8284051	4 (a)(ii)	511	512	1852	1.00
513	31.4689723	150.8457381	4 (a)(ii)	512	513	1719	0.93
514	31.4656211	150.8583774	4 (a)(ii)	513	514	1254	0.68
515	31.4605487	150.8769410	4 (a)(ii)	514	515	1852	1.00
516	31.4553143	150.8954419	4 (a)(ii)	515	516	1852	1.00
517	31.4499199	150.9138798	4 (a)(ii)	516	517	1852	1.00
518	31.4443653	150.9322503	4 (a)(ii)	517	518	1852	1.00
519	31.4386506	150.9505535	4 (a)(ii)	518	519	1852	1.00
520	31.4327757	150.9687870	4 (a)(ii)	519	520	1852	1.00



## Le plateau continental français

n° du Point Fixe	Latitude Sud	Longitude Ouest	Méthode Article 76	de PF	à PF	Distance m	Distance M
521	31.4267425	150.9869510	4 (a)(ii)	520	521	1852	1.00
522	31.4205529	151.0050386	4 (a)(ii)	521	522	1852	1.00
523	31.4142050	151.0230520	4 (a)(ii)	522	523	1852	1.00
524	31.4077006	151.0409869	4 (a)(ii)	523	524	1852	1.00
525	31.4010398	151.0588432	4 (a)(ii)	524	525	1852	1.00
526	31.3942243	151.0766186	4 (a)(ii)	525	526	1852	1.00
527	31.3872543	151.0943109	4 (a)(ii)	526	527	1852	1.00
528	31.3801315	151.1119179	4 (a)(ii)	527	528	1852	1.00
529	31.3728540	151.1294395	4 (a)(ii)	528	529	1852	1.00
530	31.3654256	151.1468713	4 (a)(ii)	529	530	1852	1.00
531	31.3578444	151.1642133	4 (a)(ii)	530	531	1852	1.00
532	31.3501141	151.1814632	4 (a)(ii)	531	532	1852	1.00
533	31.3422329	151.1986210	4 (a)(ii)	532	533	1852	1.00
534	31.3342026	151.2156823	4 (a)(ii)	533	534	1852	1.00
535	31.3260231	151.2326447	4 (a)(ii)	534	535	1852	1.00
536	31.3176964	151.2495106	4 (a)(ii)	535	536	1852	1.00
537	31.3092244	151.2662731	4 (a)(ii)	536	537	1852	1.00
538	31.3006069	151.2829346	4 (a)(ii)	537	538	1852	1.00
539	31.2918440	151.2994928	4 (a)(ii)	538	539	1852	1.00
540	31.2903667	151.3022462	4 (a)(ii)	539	540	309	0.17
541	31.2822355	151.3172525	4 (a)(ii)	540	541	1687	0.91
542	31.2731854	151.3335951	4 (a)(ii)	541	542	1852	1.00
543	31.2639936	151.3498299	4 (a)(ii)	542	543	1852	1.00
544	31.2546620	151.3659547	4 (a)(ii)	543	544	1852	1.00
545	31.2451905	151.3819649	4 (a)(ii)	544	545	1852	1.00
546	31.2355792	151.3978606	4 (a)(ii)	545	546	1852	1.00
547	31.2258298	151.4136418	4 (a)(ii)	546	547	1852	1.00
548	31.2196326	151.4234963	4 (a)(ii)	547	548	1162	0.63
549	31.2147206	151.4312398	4 (a)(ii)	548	549	916	0.49
550	31.2046968	151.4467851	4 (a)(ii)	549	550	1852	1.00
551	31.1945408	151.4622069	4 (a)(ii)	550	551	1852	1.00
552	31.1842504	151.4775097	4 (a)(ii)	551	552	1852	1.00
553	31.1738256	151.4926868	4 (a)(ii)	552	553	1852	1.00
554	31.1632703	151.5077380	4 (a)(ii)	553	554	1852	1.00
555	31.1525844	151.5226635	4 (a)(ii)	554	555	1852	1.00
556	31.1417678	151.5374610	4 (a)(ii)	555	556	1852	1.00
557	31.1308244	151.5521283	4 (a)(ii)	556	557	1852	1.00
558	31.1252682	151.5594855	4 (a)(ii)	557	558	933	0.50

## Le plateau continental français

n° du Point Fixe	Latitude Sud	Longitude Ouest	Méthode Article 76	de PF	à PF	Distance m	Distance M
559	31.1141974	151.5740202	4 (a)(ii)	558	559	1852	1.00
560	31.1029996	151.5884247	4 (a)(ii)	559	560	1852	1.00
561	31.0916767	151.6026922	4 (a)(ii)	560	561	1852	1.00
562	31.0802308	151.6168250	4 (a)(ii)	561	562	1852	1.00
563	31.0686636	151.6308207	4 (a)(ii)	562	563	1852	1.00
564	31.0569732	151.6446772	4 (a)(ii)	563	564	1852	1.00
565	31.0451633	151.6583945	4 (a)(ii)	564	565	1852	1.00
566	31.0332341	151.6719703	4 (a)(ii)	565	566	1852	1.00
567	31.0279893	151.6778745	4 (a)(ii)	566	567	810	0.44
568	31.0159418	151.6913065	4 (a)(ii)	567	568	1852	1.00
569	31.0037786	151.7045971	4 (a)(ii)	568	569	1852	1.00
570	30.9915016	151.7177395	4 (a)(ii)	569	570	1852	1.00
571	30.9791089	151.7307381	4 (a)(ii)	570	571	1852	1.00
572	30.9666043	151.7435862	4 (a)(ii)	571	572	1852	1.00
573	30.9539877	151.7562884	4 (a)(ii)	572	573	1852	1.00
574	30.9412629	151.7688379	4 (a)(ii)	573	574	1852	1.00
575	30.9284280	151.7812369	4 (a)(ii)	574	575	1852	1.00
576	30.9154849	151.7934832	4 (a)(ii)	575	576	1852	1.00
577	30.9024373	151.8055745	4 (a)(ii)	576	577	1852	1.00
578	30.8892853	151.8175108	4 (a)(ii)	577	578	1852	1.00
579	30.8760289	151.8292922	4 (a)(ii)	578	579	1852	1.00
580	30.8708897	151.8337928	4 (a)(ii)	579	580	714	0.39
581	30.8601008	151.8431600	4 (a)(ii)	580	581	1495	0.81
582	30.8466426	151.8546247	4 (a)(ii)	581	582	1852	1.00
583	30.8330856	151.8659300	4 (a)(ii)	582	583	1852	1.00
584	30.8194298	151.8770736	4 (a)(ii)	583	584	1852	1.00
585	30.8056770	151.8880555	4 (a)(ii)	584	585	1852	1.00
586	30.7918292	151.8988757	4 (a)(ii)	585	586	1852	1.00
587	30.7778882	151.9095298	4 (a)(ii)	586	587	1852	1.00
588	30.7638559	151.9200198	4 (a)(ii)	587	588	1852	1.00
589	30.7497324	151.9303437	4 (a)(ii)	588	589	1852	1.00
590	30.7355194	151.9405014	4 (a)(ii)	589	590	1852	1.00
591	30.7212190	151.9504907	4 (a)(ii)	590	591	1852	1.00
592	30.7139661	151.9554696	4 (a)(ii)	591	592	936	0.51
593	30.7047062	151.9617646	4 (a)(ii)	592	593	1192	0.64
594	30.6902342	151.9714147	4 (a)(ii)	593	594	1852	1.00
595	30.6756805	151.9808942	4 (a)(ii)	594	595	1852	1.00
596	30.6610430	151.9902007	4 (a)(ii)	595	596	1852	1.00

## Le plateau continental français

n° du Point Fixe	Latitude Sud	Longitude Ouest	Méthode Article 76	de PF	à PF	Distance m	Distance M
597	30.6463256	151.9993366	4 (a)(ii)	596	597	1852	1.00
598	30.6315283	152.0082995	4 (a)(ii)	597	598	1852	1.00
599	30.6166549	152.0170873	4 (a)(ii)	598	599	1852	1.00
600	30.6017053	152.0256999	4 (a)(ii)	599	600	1852	1.00
601	30.5866815	152.0341373	4 (a)(ii)	600	601	1852	1.00
602	30.5715854	152.0423973	4 (a)(ii)	601	602	1852	1.00
603	30.5564170	152.0504822	4 (a)(ii)	602	603	1852	1.00
604	30.5484422	152.0546548	4 (a)(ii)	603	604	972	0.52
605	30.5332059	152.0625600	4 (a)(ii)	604	605	1852	1.00
606	30.5178992	152.0702855	4 (a)(ii)	605	606	1852	1.00
607	30.5025279	152.0778314	4 (a)(ii)	606	607	1852	1.00
608	30.4870899	152.0851976	4 (a)(ii)	607	608	1852	1.00
609	30.4715891	152.0923841	4 (a)(ii)	608	609	1852	1.00
610	30.4650955	152.0953059	4 (a)(ii)	609	610	774	0.42
611	30.1686792	152.1951064	4 (a)(ii)	610	611	34301	18.52
612	30.1596341	152.1971187	4 (a)(ii)	611	612	1024	0.55
613	30.1432026	152.2005772	4 (a)(ii)	612	613	1852	1.00
614	30.1267429	152.2038470	4 (a)(ii)	613	614	1852	1.00
615	30.1102531	152.2069238	4 (a)(ii)	614	615	1852	1.00
616	30.0937391	152.2098119	4 (a)(ii)	615	616	1852	1.00
617	30.0772008	152.2125091	4 (a)(ii)	616	617	1852	1.00
618	30.0687880	152.2138049	4 (a)(ii)	617	618	943	0.51
619	30.0565337	152.2156397	4 (a)(ii)	618	619	1373	0.74
620	30.0451415	152.2173061	4 (a)(ii)	619	620	1276	0.69
621	30.0285598	152.2196215	4 (a)(ii)	620	621	1852	1.00
622	30.0119577	152.2217437	4 (a)(ii)	621	622	1852	1.00
623	29.9953372	152.2236751	4 (a)(ii)	622	623	1852	1.00
624	29.9787021	152.2254134	4 (a)(ii)	623	624	1852	1.00
625	29.9620505	152.2269629	4 (a)(ii)	624	625	1852	1.00
626	29.9453883	152.2283194	4 (a)(ii)	625	626	1852	1.00
627	29.9287154	152.2294827	4 (a)(ii)	626	627	1852	1.00
628	29.9120319	152.2304574	4 (a)(ii)	627	628	1852	1.00
629	29.8953416	152.2312367	4 (a)(ii)	628	629	1852	1.00
630	29.8786446	152.2318273	4 (a)(ii)	629	630	1852	1.00
631	29.8619428	152.2322248	4 (a)(ii)	630	631	1852	1.00
632	29.8452382	152.2324314	4 (a)(ii)	631	632	1852	1.00
633	29.8285347	152.2324449	4 (a)(ii)	632	633	1852	1.00
634	29.8118304	152.2322675	4 (a)(ii)	633	634	1852	1.00

## Le plateau continental français

n° du Point Fixe	Latitude Sud	Longitude Ouest	Méthode Article 76	de PF	à PF	Distance m	Distance M
635	29.7951271	152.2318992	4 (a)(ii)	634	635	1852	1.00
636	29.7784308	152.2313400	4 (a)(ii)	635	636	1852	1.00
637	29.7617376	152.2305899	4 (a)(ii)	636	637	1852	1.00
638	29.7450533	152.2296467	4 (a)(ii)	637	638	1852	1.00
639	28.7537762	152.1935501	4 (a)(ii)	638	639	110206	59.51
640	28.5024090	153.2728580	4 (a)(ii)	639	640	108913	58.81
641	28.5001870	153.2758067	4 (a)(ii)	640	641	379	0.20
642	28.4891341	153.2899911	4 (a)(ii)	641	642	1852	1.00
643	28.4778717	153.3039621	4 (a)(ii)	642	643	1852	1.00
644	28.4664016	153.3177153	4 (a)(ii)	643	644	1852	1.00
645	28.4547318	153.3312484	4 (a)(ii)	644	645	1852	1.00
646	28.4428622	153.3445547	4 (a)(ii)	645	646	1852	1.00
647	28.4307967	153.3576342	4 (a)(ii)	646	647	1852	1.00
648	28.3985795	153.3918892	4 (a)(ii)	647	648	4901	2.65
649	28.3863223	153.4047329	4 (a)(ii)	648	649	1852	1.00
650	28.3738768	153.4173385	4 (a)(ii)	649	650	1852	1.00
651	28.3612452	153.4297060	4 (a)(ii)	650	651	1852	1.00
652	28.3484312	153.4418311	4 (a)(ii)	651	652	1852	1.00
653	28.3141318	153.4739705	4 (a)(ii)	652	653	4940	2.67
654	28.3011411	153.4858463	4 (a)(ii)	653	654	1852	1.00
655	28.0860307	153.6804371	4 (a)(ii)	654	655	30570	16.51
656	28.0728666	153.6920411	4 (a)(ii)	655	656	1852	1.00
657	28.0395059	153.7211083	4 (a)(ii)	656	657	4676	2.52
658	28.0261706	153.7324585	4 (a)(ii)	657	658	1852	1.00
659	28.0126682	153.7435527	4 (a)(ii)	658	659	1852	1.00
660	27.9990027	153.7543886	4 (a)(ii)	659	660	1852	1.00
661	27.9851779	153.7649641	4 (a)(ii)	660	661	1852	1.00
662	27.9711978	153.7752767	4 (a)(ii)	661	662	1852	1.00
663	27.9570663	153.7853221	4 (a)(ii)	662	663	1852	1.00
664	27.9237053	153.8082449	4 (a)(ii)	663	664	4337	2.34
665	27.9094278	153.8180186	4 (a)(ii)	664	665	1852	1.00
666	27.8950048	153.8275205	4 (a)(ii)	665	666	1852	1.00
667	27.8804422	153.8367484	4 (a)(ii)	666	667	1852	1.00
668	27.8657459	153.8456979	4 (a)(ii)	667	668	1852	1.00
669	27.8509178	153.8543689	4 (a)(ii)	668	669	1852	1.00
670	27.8359639	153.8627591	4 (a)(ii)	669	670	1852	1.00
671	27.8208861	153.8708642	4 (a)(ii)	670	671	1852	1.00
672	27.8056904	153.8786863	4 (a)(ii)	671	672	1852	1.00

## Le plateau continental français

n° du Point Fixe	Latitude Sud	Longitude Ouest	Méthode Article 76	de PF	à PF	Distance m	Distance M
673	27.7903786	153.8862186	4 (a)(ii)	672	673	1852	1.00
674	27.7749589	153.8934591	4 (a)(ii)	673	674	1852	1.00
675	27.7594330	153.9004098	4 (a)(ii)	674	675	1852	1.00
676	27.7438070	153.9070663	4 (a)(ii)	675	676	1852	1.00
677	27.7280828	153.9134286	4 (a)(ii)	676	677	1852	1.00
678	27.7122664	153.9194922	4 (a)(ii)	677	678	1852	1.00
679	27.6963617	153.9252572	4 (a)(ii)	678	679	1852	1.00
680	26.7830932	154.3414085	4 (a)(ii)	679	680	109495	59.12
681	26.4642185	154.8590604	4 (a)(ii)	680	681	62448	33.72
682	26.0642888	155.7585345	4 (a)(ii)	681	682	100043	54.02
683	26.0567126	155.7750298	4 (a)(ii)	682	683	1852	1.00
684	26.0488843	155.7913814	4 (a)(ii)	683	684	1852	1.00
685	26.0408121	155.8075848	4 (a)(ii)	684	685	1852	1.00
686	26.0324938	155.8236332	4 (a)(ii)	685	686	1852	1.00
687	26.0239335	155.8395244	4 (a)(ii)	686	687	1852	1.00
688	26.0151331	155.8552539	4 (a)(ii)	687	688	1852	1.00
689	26.0060945	155.8708150	4 (a)(ii)	688	689	1852	1.00
690	25.9968219	155.8862053	4 (a)(ii)	689	690	1852	1.00
691	25.9873172	155.9014206	4 (a)(ii)	690	691	1852	1.00
692	25.9775843	155.9164561	4 (a)(ii)	691	692	1852	1.00
693	25.9676232	155.9313075	4 (a)(ii)	692	693	1852	1.00
694	25.9574400	155.9459703	4 (a)(ii)	693	694	1852	1.00
695	25.9470346	155.9604399	4 (a)(ii)	694	695	1852	1.00
696	25.9364110	155.9747141	4 (a)(ii)	695	696	1852	1.00
697	25.9255732	155.9887885	4 (a)(ii)	696	697	1852	1.00
698	25.8529804	156.0825591	4 (a)(ii)	697	698	12367	6.68
699	25.8295261	156.1127447	4 (a)(ii)	698	699	3988	2.15
700	25.8184772	156.1266035	4 (a)(ii)	699	700	1852	1.00
701	25.8072178	156.1402556	4 (a)(ii)	700	701	1852	1.00
702	25.7957540	156.1536944	4 (a)(ii)	701	702	1852	1.00
703	25.7840878	156.1669176	4 (a)(ii)	702	703	1852	1.00
704	25.7722212	156.1799230	4 (a)(ii)	703	704	1852	1.00
705	25.7601602	156.1927038	4 (a)(ii)	704	705	1852	1.00
706	25.7479067	156.2052600	4 (a)(ii)	705	706	1852	1.00
707	25.7354628	156.2175849	4 (a)(ii)	706	707	1852	1.00
708	25.7228366	156.2296762	4 (a)(ii)	707	708	1852	1.00
709	25.7100258	156.2415317	4 (a)(ii)	708	709	1852	1.00
710	25.7018874	156.2488575	4 (a)(ii)	709	710	1164	0.63

## Le plateau continental français

n° du Point Fixe	Latitude Sud	Longitude Ouest	Méthode Article 76	de PF	à PF	Distance m	Distance M
711	25.6902485	156.2592487	4 (a)(ii)	710	711	1660	0.90
712	25.6770863	156.2706214	4 (a)(ii)	711	712	1852	1.00
713	25.6637536	156.2817470	4 (a)(ii)	712	713	1852	1.00
714	25.6502545	156.2926256	4 (a)(ii)	713	714	1852	1.00
715	25.6365911	156.3032505	4 (a)(ii)	714	715	1852	1.00
716	25.1845189	156.6484640	4 (a)(ii)	715	716	61025	32.95
717	25.1706978	156.6587992	4 (a)(ii)	716	717	1852	1.00
718	25.1567197	156.6688760	4 (a)(ii)	717	718	1852	1.00
719	25.1425908	156.6786923	4 (a)(ii)	718	719	1852	1.00
720	25.1283151	156.6882459	4 (a)(ii)	719	720	1852	1.00
721	25.1138945	156.6975368	4 (a)(ii)	720	721	1852	1.00
722	25.0993332	156.7065603	4 (a)(ii)	721	722	1852	1.00
723	25.0846392	156.7153122	4 (a)(ii)	722	723	1852	1.00
724	25.0754210	156.7205853	4 (a)(ii)	723	724	1154	0.62
<b>Iles Marquises – Zone est</b>							
725	8.8165435	135.4219386	1				
726	9.3334819	134.5749980	4 (a)(ii)	725	726	109254	58.99
727	9.2116786	133.9909179	4 (a)(ii)	726	727	65469	35.35
728	9.2082267	133.9744271	4 (a)(ii)	727	728	1852	1.00
729	9.0981498	133.4072285	4 (a)(ii)	728	729	63415	34.24
730	9.0949713	133.3906883	4 (a)(ii)	729	730	1852	1.00
731	9.0920672	133.3740964	4 (a)(ii)	730	731	1852	1.00
732	9.0894378	133.3574596	4 (a)(ii)	731	732	1852	1.00
733	9.0870828	133.3407824	4 (a)(ii)	732	733	1852	1.00
734	8.9940760	132.6715016	4 (a)(ii)	733	734	74170	40.05
735	8.9981954	132.6704551	5	734	735	472	0.25
736	9.0144516	132.6664351	5	735	736	1852	1.00
737	9.0306824	132.6624600	5	736	737	1852	1.00
738	9.0469617	132.6585389	5	737	738	1852	1.00
739	9.0632446	132.6546267	5	738	739	1852	1.00
740	9.0795715	132.6507550	5	739	740	1852	1.00
741	9.0958775	132.6469506	5	740	741	1852	1.00
742	9.1122073	132.6431777	5	741	742	1852	1.00
743	9.1285386	132.6394834	5	742	743	1852	1.00
744	9.1448669	132.6358138	5	743	744	1852	1.00
745	9.1612234	132.6322272	5	744	745	1852	1.00
746	9.1775480	132.6286564	5	745	746	1852	1.00
747	9.1939231	132.6251373	5	746	747	1852	1.00

## Le plateau continental français

n° du Point Fixe	Latitude Sud	Longitude Ouest	Méthode Article 76	de PF	à PF	Distance m	Distance M
748	9.2103019	132.6216608	5	747	748	1852	1.00
749	9.2267268	132.6181911	5	748	749	1852	1.00
750	9.2431040	132.6148224	5	749	750	1852	1.00
751	9.2595051	132.6114537	5	750	751	1852	1.00
752	9.2759276	132.6081861	5	751	752	1852	1.00
753	9.2923516	132.6049274	5	752	753	1852	1.00
754	9.3088240	132.6017609	5	753	754	1852	1.00
755	9.3252687	132.5986123	5	754	755	1852	1.00
756	9.3416904	132.5954974	5	755	756	1852	1.00
757	9.3581626	132.5924319	5	756	757	1852	1.00
758	9.3746273	132.5893911	5	757	758	1852	1.00
759	9.3911112	132.5864603	5	758	759	1852	1.00
760	9.4075811	132.5835475	5	759	760	1852	1.00
761	9.4241014	132.5806842	5	760	761	1852	1.00
762	9.4406030	132.5778635	5	761	762	1852	1.00
763	9.4571240	132.5750495	5	762	763	1852	1.00
764	9.4736441	132.5723388	5	763	764	1852	1.00
765	9.5066819	132.5670140	5	764	765	3717	2.01
766	9.5232197	132.5644157	5	765	766	1852	1.00
767	9.5397879	132.5619071	5	766	767	1852	1.00
768	9.5563441	132.5594165	5	767	768	1852	1.00
769	9.5728593	132.5569552	5	768	769	1852	1.00
770	9.5894295	132.5545769	5	769	770	1852	1.00
771	9.6059966	132.5522210	5	770	771	1852	1.00
772	9.6226098	132.5499101	5	771	772	1852	1.00
773	9.6391953	132.5476419	5	772	773	1852	1.00
774	9.6557600	132.5454343	5	773	774	1852	1.00
775	9.6723617	132.5432761	5	774	775	1852	1.00
776	9.6889737	132.5411695	5	775	776	1852	1.00
777	9.7055871	132.5391146	5	776	777	1852	1.00
778	9.7222019	132.5370665	5	777	778	1852	1.00
779	9.7388115	132.5351126	5	778	779	1852	1.00
780	9.7554402	132.5331768	5	779	780	1852	1.00
781	9.7720525	132.5313240	5	780	781	1852	1.00
782	9.7886929	132.5294982	5	781	782	1852	1.00
783	9.8053526	132.5276948	5	782	783	1852	1.00
784	9.8220046	132.5259813	5	783	784	1852	1.00
785	9.8386626	132.5242789	5	784	785	1852	1.00

## Le plateau continental français

n° du Point Fixe	Latitude Sud	Longitude Ouest	Méthode Article 76	de PF	à PF	Distance m	Distance M
786	9.8719826	132.5210765	5	785	786	3719	2.01
787	9.8886402	132.5195269	5	786	787	1852	1.00
788	9.9053125	132.5180357	5	787	788	1852	1.00
789	9.9219684	132.5165871	5	788	789	1852	1.00
790	9.9386234	132.5151880	5	789	790	1852	1.00
791	9.9553065	132.5138068	5	790	791	1852	1.00
792	9.9720110	132.5125088	5	791	792	1852	1.00
793	9.9887035	132.5112399	5	792	793	1852	1.00
794	10.0053551	132.5100451	5	793	794	1852	1.00
795	10.0220548	132.5088886	5	794	795	1852	1.00
796	10.0387580	132.5077926	5	795	796	1852	1.00
797	10.0554582	132.5067461	5	796	797	1852	1.00
798	10.0721664	132.5057018	5	797	798	1852	1.00
799	10.0888670	132.5047586	5	798	799	1852	1.00
800	10.1055801	132.5038266	5	799	800	1852	1.00
801	10.1222813	132.5029327	5	800	801	1852	1.00
802	10.1389993	132.5021130	5	801	802	1852	1.00
803	10.1556964	132.5013180	5	802	803	1852	1.00
804	10.1724193	132.5006106	5	803	804	1852	1.00
805	10.1891191	132.4999189	5	804	805	1852	1.00
806	10.2058158	132.4992788	5	805	806	1852	1.00
807	10.2225450	132.4986815	5	806	807	1852	1.00
808	10.2392911	132.4981425	5	807	808	1852	1.00
809	10.2560229	132.4976574	5	808	809	1852	1.00
810	10.2727182	132.4972194	5	809	810	1852	1.00
811	10.2894127	132.4968332	5	810	811	1852	1.00
812	10.3061463	132.4964604	5	811	812	1852	1.00
813	10.3228901	132.4961729	5	812	813	1852	1.00
814	10.3396263	132.4959124	5	813	814	1852	1.00
815	10.3563194	132.4957260	5	814	815	1852	1.00
816	10.3730583	132.4955778	5	815	816	1852	1.00
817	10.3897985	132.4954947	5	816	817	1852	1.00
818	10.4065378	132.4954587	5	817	818	1852	1.00
819	10.4232273	132.4954251	5	818	819	1852	1.00
820	10.4399669	132.4954430	5	819	820	1852	1.00
821	10.4567057	132.4955194	5	820	821	1852	1.00
822	10.4733947	132.4956362	5	821	822	1852	1.00
823	10.4901316	132.4958248	5	822	823	1852	1.00



## Le plateau continental français

n° du Point Fixe	Latitude Sud	Longitude Ouest	Méthode Article 76	de PF	à PF	Distance m	Distance M
824	10.5235583	132.4963683	5	823	824	3715	2.01
825	10.5402925	132.4966692	5	824	825	1852	1.00
826	10.5570280	132.4970398	5	825	826	1852	1.00
827	10.5737604	132.4974530	5	826	827	1852	1.00
828	10.5904474	132.4979763	5	827	828	1852	1.00
829	10.6071312	132.4984995	5	828	829	1852	1.00
830	10.6238630	132.4990251	5	829	830	1852	1.00
831	10.6405939	132.4996494	5	830	831	1852	1.00
832	10.6573217	132.5002872	5	831	832	1852	1.00
833	10.6740040	132.5010148	5	832	833	1852	1.00
834	10.6907254	132.5017649	5	833	834	1852	1.00
835	10.7074060	132.5025914	5	834	835	1852	1.00
836	10.7241211	132.5034560	5	835	836	1852	1.00
837	10.7408019	132.5043341	5	836	837	1852	1.00
838	10.7575130	132.5053088	5	837	838	1852	1.00
839	10.7741920	132.5062857	5	838	839	1852	1.00
840	10.7908723	132.5073682	5	839	840	1852	1.00
841	10.8075760	132.5084551	5	840	841	1852	1.00
842	10.8242522	132.5095870	5	841	842	1852	1.00
843	10.8409474	132.5107885	5	842	843	1852	1.00
844	10.8575729	132.5120192	5	843	844	1852	1.00
845	10.8742618	132.5133330	5	844	845	1852	1.00
846	10.8909387	132.5146647	5	845	846	1852	1.00
847	10.9075613	132.5160504	5	846	847	1852	1.00
848	10.9242407	132.5174742	5	847	848	1852	1.00
849	10.9409147	132.5189587	5	848	849	1852	1.00
850	10.9575834	132.5204970	5	849	850	1852	1.00
851	10.9742067	132.5220332	5	850	851	1852	1.00
852	10.9908290	132.5236726	5	851	852	1852	1.00
853	11.0074859	132.5253232	5	852	853	1852	1.00
854	11.0241064	132.5270615	5	853	854	1852	1.00
855	11.0407547	132.5288222	5	854	855	1852	1.00
856	11.0573245	132.5306637	5	855	856	1852	1.00
857	11.0739598	132.5325390	5	856	857	1852	1.00
858	11.0905787	132.5344277	5	857	858	1852	1.00
859	11.1072010	132.5364152	5	858	859	1852	1.00
860	11.1237691	132.5384094	5	859	860	1852	1.00
861	11.1403363	132.5404509	5	860	861	1852	1.00

## Le plateau continental français

n° du Point Fixe	Latitude Sud	Longitude Ouest	Méthode Article 76	de PF	à PF	Distance m	Distance M
862	11.1569447	132.5425507	5	861	862	1852	1.00
863	11.1735100	132.5446954	5	862	863	1852	1.00
864	11.1901053	132.5469053	5	863	864	1852	1.00
865	11.2066709	132.5491533	5	864	865	1852	1.00
866	11.2232511	132.5514754	5	865	866	1852	1.00
867	11.2398147	132.5538223	5	866	867	1852	1.00
868	11.2563286	132.5562185	5	867	868	1852	1.00
869	11.2728926	132.5586552	5	868	869	1852	1.00
870	11.2894046	132.5611054	5	869	870	1852	1.00
871	11.3059511	132.5636521	5	870	871	1852	1.00
872	11.3224124	132.5662527	5	871	872	1852	1.00
873	11.3389237	132.5689050	5	872	873	1852	1.00
874	11.3554540	132.5715618	5	873	874	1852	1.00
875	11.3719124	132.5742657	5	874	875	1852	1.00
876	11.3884253	132.5770370	5	875	876	1852	1.00
877	11.4048840	132.5798914	5	876	877	1852	1.00
878	11.4213771	132.5827727	5	877	878	1852	1.00
879	11.4378339	132.5856788	5	878	879	1852	1.00
880	11.4542410	132.5886343	5	879	880	1852	1.00
881	11.4707157	132.5916279	5	880	881	1852	1.00
882	11.4871696	132.5947338	5	881	882	1852	1.00
883	11.5199814	132.6009502	5	882	883	3708	2.00
884	11.5364146	132.6041661	5	883	884	1852	1.00
885	11.5528181	132.6074293	5	884	885	1852	1.00
886	11.5691696	132.6107395	5	885	886	1852	1.00
887	11.5855822	132.6140678	5	886	887	1852	1.00
888	11.5862288	132.6142026	5	887	888	73	0.04
889	11.5888682	132.6263186	5	888	889	1351	0.73
890	11.5922028	132.6429576	5	889	890	1852	1.00
891	11.7468991	133.4466309	4 (a)(ii)	890	891	89132	48.13
892	11.9523805	134.2137405	4 (a)(ii)	891	892	86493	46.70
893	11.9565332	134.2302111	4 (a)(ii)	892	893	1852	1.00
894	11.9604161	134.2467491	4 (a)(ii)	893	894	1852	1.00
895	11.9640270	134.2633522	4 (a)(ii)	894	895	1852	1.00
896	11.9673636	134.2800137	4 (a)(ii)	895	896	1852	1.00
897	11.9704238	134.2967314	4 (a)(ii)	896	897	1852	1.00
898	11.9732098	134.3134962	4 (a)(ii)	897	898	1852	1.00
899	11.9757194	134.3303081	4 (a)(ii)	898	899	1852	1.00

## Le plateau continental français

n° du Point Fixe	Latitude Sud	Longitude Ouest	Méthode Article 76	de PF	à PF	Distance m	Distance M
900	11.9779526	134.3471605	4 (a)(ii)	899	900	1852	1.00
901	11.9799050	134.3640466	4 (a)(ii)	900	901	1852	1.00
902	11.9815809	134.3809641	4 (a)(ii)	901	902	1852	1.00
903	11.9829783	134.3979109	4 (a)(ii)	902	903	1852	1.00
904	12.0464690	135.1988555	4 (a)(ii)	903	904	87337	47.16
905	12.6826748	135.9651386	1	904	905	109159	58.94
<b>Iles Australes – Zone est</b>							
906	26.1686519	138.7630202	1				
907	26.6939733	139.7089934	1	906	907	110760	59.81
908	27.3369486	138.8827185	4 (a)(ii)	907	908	108607	58.64
909	27.8144766	137.9476958	4 (a)(ii)	908	909	106290	57.39
910	27.8227849	137.9313869	4 (a)(ii)	909	910	1852	1.00
911	27.8289763	137.9196010	4 (a)(ii)	910	911	1347	0.73
912	27.8458635	137.8876165	4 (a)(ii)	911	912	3660	1.98
913	27.8544089	137.8714603	4 (a)(ii)	912	913	1852	1.00
914	27.8631932	137.8554635	4 (a)(ii)	913	914	1852	1.00
915	27.8753115	137.8341510	4 (a)(ii)	914	915	2489	1.34
916	27.8843295	137.8183159	4 (a)(ii)	915	916	1852	1.00
917	27.8935762	137.8026515	4 (a)(ii)	916	917	1852	1.00
918	27.9030535	137.7871579	4 (a)(ii)	917	918	1852	1.00
919	27.9127575	137.7718438	4 (a)(ii)	918	919	1852	1.00
920	27.9226839	137.7567095	4 (a)(ii)	919	920	1852	1.00
921	27.9328329	137.7417615	4 (a)(ii)	920	921	1852	1.00
922	27.9431982	137.7270022	4 (a)(ii)	921	922	1852	1.00
923	28.0410760	137.5906873	4 (a)(ii)	922	923	17239	9.31
924	28.0516560	137.5761099	4 (a)(ii)	923	924	1852	1.00
925	28.0624501	137.5617301	4 (a)(ii)	924	925	1852	1.00
926	28.0734542	137.5475502	4 (a)(ii)	925	926	1852	1.00
927	28.0846644	137.5335792	4 (a)(ii)	926	927	1852	1.00
928	28.0922387	137.5243939	4 (a)(ii)	927	928	1233	0.67
929	28.1026662	137.5118354	4 (a)(ii)	928	929	1691	0.91
930	28.1142815	137.4982844	4 (a)(ii)	929	930	1852	1.00
931	28.1260926	137.4849511	4 (a)(ii)	930	931	1852	1.00
932	28.1380975	137.4718380	4 (a)(ii)	931	932	1852	1.00
933	28.1502921	137.4589494	4 (a)(ii)	932	933	1852	1.00
934	28.1626763	137.4462899	4 (a)(ii)	933	934	1852	1.00
935	28.1752442	137.4338617	4 (a)(ii)	934	935	1852	1.00
936	28.1879917	137.4216693	4 (a)(ii)	935	936	1852	1.00

## Le plateau continental français

n° du Point Fixe	Latitude Sud	Longitude Ouest	Méthode Article 76	de PF	à PF	Distance m	Distance M
937	28.2009167	137.4097150	4 (a)(ii)	936	937	1852	1.00
938	28.2140172	137.3980032	4 (a)(ii)	937	938	1852	1.00
939	28.2272851	137.3865362	4 (a)(ii)	938	939	1852	1.00
940	28.2407204	137.3753162	4 (a)(ii)	939	940	1852	1.00
941	28.2543190	137.3643500	4 (a)(ii)	940	941	1852	1.00
942	28.2781174	137.3452990	4 (a)(ii)	941	942	3236	1.75
943	28.2918762	137.3345844	4 (a)(ii)	942	943	1852	1.00
944	28.3057882	137.3241280	4 (a)(ii)	943	944	1852	1.00
945	28.3198515	137.3139299	4 (a)(ii)	944	945	1852	1.00
946	28.3254754	137.3099368	4 (a)(ii)	945	946	737	0.40
947	28.3396870	137.3000015	4 (a)(ii)	946	947	1852	1.00
948	28.3540418	137.2903356	4 (a)(ii)	947	948	1852	1.00
949	28.3685375	137.2809370	4 (a)(ii)	948	949	1852	1.00
950	28.3831683	137.2718101	4 (a)(ii)	949	950	1852	1.00
951	28.3979302	137.2629594	4 (a)(ii)	950	951	1852	1.00
952	28.4128210	137.2543850	4 (a)(ii)	951	952	1852	1.00
953	28.4220634	137.2492377	4 (a)(ii)	952	953	1144	0.62
954	28.4317794	137.2439084	4 (a)(ii)	953	954	1199	0.65
955	28.4469135	137.2358932	4 (a)(ii)	954	955	1852	1.00
956	28.4621645	137.2281654	4 (a)(ii)	955	956	1852	1.00
957	28.4775244	137.2207207	4 (a)(ii)	956	957	1852	1.00
958	28.4929931	137.2135656	4 (a)(ii)	957	958	1852	1.00
959	28.5085628	137.2067024	4 (a)(ii)	958	959	1852	1.00
960	28.5242312	137.2001313	4 (a)(ii)	959	960	1852	1.00
961	28.5399964	137.1938543	4 (a)(ii)	960	961	1852	1.00
962	28.5558485	137.1878738	4 (a)(ii)	961	962	1852	1.00
963	28.5717874	137.1821919	4 (a)(ii)	962	963	1852	1.00
964	28.5878072	137.1768110	4 (a)(ii)	963	964	1852	1.00
965	28.6039037	137.1717310	4 (a)(ii)	964	965	1852	1.00
966	28.6200730	137.1669542	4 (a)(ii)	965	966	1852	1.00
967	28.6363092	137.1624806	4 (a)(ii)	966	967	1852	1.00
968	28.6526102	137.1583147	4 (a)(ii)	967	968	1852	1.00
969	28.6689680	137.1544542	4 (a)(ii)	968	969	1852	1.00
970	28.6853807	137.1509036	4 (a)(ii)	969	970	1852	1.00
971	28.7018443	137.1476629	4 (a)(ii)	970	971	1852	1.00
972	28.7183527	137.1447322	4 (a)(ii)	971	972	1852	1.00
973	28.7349001	137.1421136	4 (a)(ii)	972	973	1852	1.00
974	28.7514864	137.1398072	4 (a)(ii)	973	974	1852	1.00

## Le plateau continental français

n° du Point Fixe	Latitude Sud	Longitude Ouest	Méthode Article 76	de PF	à PF	Distance m	Distance M
975	28.7681017	137.1378129	4 (a)(ii)	974	975	1852	1.00
976	28.7847460	137.1361330	4 (a)(ii)	975	976	1852	1.00
977	28.8014113	137.1347676	4 (a)(ii)	976	977	1852	1.00
978	28.8180938	137.1337188	4 (a)(ii)	977	978	1852	1.00
979	28.8347913	137.1329845	4 (a)(ii)	978	979	1852	1.00
980	28.8514960	137.1325667	4 (a)(ii)	979	980	1852	1.00
981	28.8682039	137.1324634	4 (a)(ii)	980	981	1852	1.00
982	28.8849111	137.1326768	4 (a)(ii)	981	982	1852	1.00
983	28.9016136	137.1332090	4 (a)(ii)	982	983	1852	1.00
984	28.9183055	137.1340557	4 (a)(ii)	983	984	1852	1.00
985	28.9349828	137.1352190	4 (a)(ii)	984	985	1852	1.00
986	28.9516396	137.1366967	4 (a)(ii)	985	986	1852	1.00
987	28.9682740	137.1384934	4 (a)(ii)	986	987	1852	1.00
988	28.9848800	137.1406044	4 (a)(ii)	987	988	1852	1.00
989	29.0014517	137.1430299	4 (a)(ii)	988	989	1852	1.00
990	29.0179852	137.1457697	4 (a)(ii)	989	990	1852	1.00
991	29.0344766	137.1488240	4 (a)(ii)	990	991	1852	1.00
992	29.0509199	137.1521927	4 (a)(ii)	991	992	1852	1.00
993	29.0673112	137.1558735	4 (a)(ii)	992	993	1852	1.00
994	29.0836486	137.1598643	4 (a)(ii)	993	994	1852	1.00
995	29.0999242	137.1641672	4 (a)(ii)	994	995	1852	1.00
996	29.1161322	137.1687801	4 (a)(ii)	995	996	1852	1.00
997	29.1322725	137.1737006	4 (a)(ii)	996	997	1852	1.00
998	29.1483373	137.1789265	4 (a)(ii)	997	998	1852	1.00
999	29.1643246	137.1844602	4 (a)(ii)	998	999	1852	1.00
1000	29.1802267	137.1902992	4 (a)(ii)	999	1000	1852	1.00
1001	29.1960415	137.1964414	4 (a)(ii)	1000	1001	1852	1.00
1002	29.2117652	137.2028824	4 (a)(ii)	1001	1002	1852	1.00
1003	29.2273900	137.2096242	4 (a)(ii)	1002	1003	1852	1.00
1004	29.2429158	137.2166648	4 (a)(ii)	1003	1004	1852	1.00
1005	29.2559776	137.2226183	4 (a)(ii)	1004	1005	1562	0.84
1006	29.2713966	137.2299553	4 (a)(ii)	1005	1006	1852	1.00
1007	29.2867070	137.2375865	4 (a)(ii)	1006	1007	1852	1.00
1008	29.3019029	137.2455097	4 (a)(ii)	1007	1008	1852	1.00
1009	29.3169784	137.2537248	4 (a)(ii)	1008	1009	1852	1.00
1010	29.3319335	137.2622273	4 (a)(ii)	1009	1010	1852	1.00
1011	29.3467606	137.2710128	4 (a)(ii)	1010	1011	1852	1.00
1012	29.3614575	137.2800858	4 (a)(ii)	1011	1012	1852	1.00

## Le plateau continental français

n° du Point Fixe	Latitude Sud	Longitude Ouest	Méthode Article 76	de PF	à PF	Distance m	Distance M
1013	29.3760186	137.2894373	4 (a)(ii)	1012	1013	1852	1.00
1014	29.3904419	137.2990672	4 (a)(ii)	1013	1014	1852	1.00
1015	29.4047195	137.3089734	4 (a)(ii)	1014	1015	1852	1.00
1016	29.4188516	137.3191536	4 (a)(ii)	1015	1016	1852	1.00
1017	29.4328323	137.3296032	4 (a)(ii)	1016	1017	1852	1.00
1018	29.4466557	137.3403201	4 (a)(ii)	1017	1018	1852	1.00
1019	29.4603220	137.3513020	4 (a)(ii)	1018	1019	1852	1.00
1020	29.4738253	137.3625444	4 (a)(ii)	1019	1020	1852	1.00
1021	29.4871617	137.3740474	4 (a)(ii)	1020	1021	1852	1.00
1022	29.5003255	137.3858041	4 (a)(ii)	1021	1022	1852	1.00
1023	29.5133166	137.3978145	4 (a)(ii)	1022	1023	1852	1.00
1024	29.5261312	137.4100720	4 (a)(ii)	1023	1024	1852	1.00
1025	29.5387615	137.4225766	4 (a)(ii)	1024	1025	1852	1.00
1026	29.5512077	137.4353214	4 (a)(ii)	1025	1026	1852	1.00
1027	29.5634657	137.4483066	4 (a)(ii)	1026	1027	1852	1.00
1028	29.5755299	137.4615253	4 (a)(ii)	1027	1028	1852	1.00
1029	29.5958286	137.4840550	4 (a)(ii)	1028	1029	3135	1.69
1030	29.6076985	137.4975073	4 (a)(ii)	1029	1030	1852	1.00
1031	29.6193688	137.5111887	4 (a)(ii)	1030	1031	1852	1.00
1032	29.6308376	137.5250946	4 (a)(ii)	1031	1032	1852	1.00
1033	29.6420991	137.5392183	4 (a)(ii)	1032	1033	1852	1.00
1034	29.6531534	137.5535599	4 (a)(ii)	1033	1034	1852	1.00
1035	29.6639965	137.5681127	4 (a)(ii)	1034	1035	1852	1.00
1036	29.6746228	137.5828742	4 (a)(ii)	1035	1036	1852	1.00
1037	29.6850322	137.5978379	4 (a)(ii)	1036	1037	1852	1.00
1038	29.6952209	137.6130015	4 (a)(ii)	1037	1038	1852	1.00
1039	29.7051851	137.6283627	4 (a)(ii)	1038	1039	1852	1.00
1040	29.7149228	137.6439125	4 (a)(ii)	1039	1040	1852	1.00
1041	29.7244322	137.6596487	4 (a)(ii)	1040	1041	1852	1.00
1042	29.7337074	137.6755691	4 (a)(ii)	1041	1042	1852	1.00
1043	29.7427505	137.6916669	4 (a)(ii)	1042	1043	1852	1.00
1044	29.7515537	137.7079377	4 (a)(ii)	1043	1044	1852	1.00
1045	29.7601171	137.7243768	4 (a)(ii)	1044	1045	1852	1.00
1046	29.7684407	137.7409800	4 (a)(ii)	1045	1046	1852	1.00
1047	29.7765167	137.7577425	4 (a)(ii)	1046	1047	1852	1.00
1048	29.7843472	137.7746600	4 (a)(ii)	1047	1048	1852	1.00
1049	29.7919283	137.7917280	4 (a)(ii)	1048	1049	1852	1.00
1050	29.7992581	137.8089398	4 (a)(ii)	1049	1050	1852	1.00

## Le plateau continental français

n° du Point Fixe	Latitude Sud	Longitude Ouest	Méthode Article 76	de PF	à PF	Distance m	Distance M
1051	29.8063347	137.8262907	4 (a)(ii)	1050	1051	1852	1.00
1052	29.8131562	137.8437787	4 (a)(ii)	1051	1052	1852	1.00
1053	29.8197188	137.8613969	4 (a)(ii)	1052	1053	1852	1.00
1054	29.8260244	137.8791386	4 (a)(ii)	1053	1054	1852	1.00
1055	29.8320672	137.8970016	4 (a)(ii)	1054	1055	1852	1.00
1056	29.8378472	137.9149814	4 (a)(ii)	1055	1056	1852	1.00
1057	29.8433626	137.9330690	4 (a)(ii)	1056	1057	1852	1.00
1058	29.8486135	137.9512621	4 (a)(ii)	1057	1058	1852	1.00
1059	29.8516264	137.9619206	4 (a)(ii)	1058	1059	1080	0.58
1060	29.8566086	137.9802148	4 (a)(ii)	1059	1060	1852	1.00
1061	29.8613223	137.9986011	4 (a)(ii)	1060	1061	1852	1.00
1062	29.8657657	138.0170794	4 (a)(ii)	1061	1062	1852	1.00
1063	29.8699369	138.0356386	4 (a)(ii)	1062	1063	1852	1.00
1064	29.8738338	138.0542786	4 (a)(ii)	1063	1064	1852	1.00
1065	29.8774586	138.0729905	4 (a)(ii)	1064	1065	1852	1.00
1066	29.8808092	138.0917721	4 (a)(ii)	1065	1066	1852	1.00
1067	29.8838838	138.1106165	4 (a)(ii)	1066	1067	1852	1.00
1068	29.8866804	138.1295170	4 (a)(ii)	1067	1068	1852	1.00
1069	29.8892009	138.1484692	4 (a)(ii)	1068	1069	1852	1.00
1070	29.8914416	138.1674686	4 (a)(ii)	1069	1070	1852	1.00
1071	29.8934044	138.1865084	4 (a)(ii)	1070	1071	1852	1.00
1072	29.8950872	138.2055819	4 (a)(ii)	1071	1072	1852	1.00
1073	29.8964903	138.2246890	4 (a)(ii)	1072	1073	1852	1.00
1074	29.8976115	138.2438187	4 (a)(ii)	1073	1074	1852	1.00
1075	29.8984549	138.2629685	4 (a)(ii)	1074	1075	1852	1.00
1076	29.8990145	138.2821318	4 (a)(ii)	1075	1076	1852	1.00
1077	29.8992943	138.3013019	4 (a)(ii)	1076	1077	1852	1.00
1078	29.8992943	138.3204764	4 (a)(ii)	1077	1078	1852	1.00
1079	29.8990125	138.3396465	4 (a)(ii)	1078	1079	1852	1.00
1080	29.8984490	138.3588098	4 (a)(ii)	1079	1080	1852	1.00
1081	29.8976037	138.3779596	4 (a)(ii)	1080	1081	1852	1.00
1082	29.8964785	138.3970892	4 (a)(ii)	1081	1082	1852	1.00
1083	29.8950735	138.4161941	4 (a)(ii)	1082	1083	1852	1.00
1084	29.8933867	138.4352699	4 (a)(ii)	1083	1084	1852	1.00
1085	29.8929934	138.4393235	4 (a)(ii)	1084	1085	393	0.21
1086	29.8911539	138.4570563	4 (a)(ii)	1085	1086	1721	0.93
1087	29.8884084	138.4819059	4 (a)(ii)	1086	1087	2413	1.30
1088	29.8861657	138.5009030	4 (a)(ii)	1087	1088	1852	1.00

## Le plateau continental français

n° du Point Fixe	Latitude Sud	Longitude Ouest	Méthode Article 76	de PF	à PF	Distance m	Distance M
1089	29.8836431	138.5198552	4 (a)(ii)	1088	1089	1852	1.00
1090	29.8808444	138.5387535	4 (a)(ii)	1089	1090	1852	1.00
1091	29.8783530	138.5541350	4 (a)(ii)	1090	1091	1508	0.81
1092	29.8768127	138.5633539	4 (a)(ii)	1091	1092	905	0.49
1093	29.8734600	138.5821332	4 (a)(ii)	1092	1093	1852	1.00
1094	29.8698331	138.6008451	4 (a)(ii)	1093	1094	1852	1.00
1095	29.8659321	138.6194829	4 (a)(ii)	1094	1095	1852	1.00
1096	29.8617588	138.6380421	4 (a)(ii)	1095	1096	1852	1.00
1097	29.8573133	138.6565182	4 (a)(ii)	1096	1097	1852	1.00
1098	29.8525974	138.6749045	4 (a)(ii)	1097	1098	1852	1.00
1099	30.2006941	139.7352534	4 (a)(ii)	1098	1099	109100	58.91
1100	30.4591520	140.3245572	4 (a)(ii)	1099	1100	63399	34.23
1101	30.4664826	140.3418857	4 (a)(ii)	1100	1101	1852	1.00
1102	30.4735596	140.3593534	4 (a)(ii)	1101	1102	1852	1.00
1103	30.4774501	140.3691877	4 (a)(ii)	1102	1103	1036	0.56
1104	30.4842735	140.3867925	4 (a)(ii)	1103	1104	1852	1.00
1105	30.4908378	140.4045297	4 (a)(ii)	1104	1105	1852	1.00
1106	30.4971429	140.4223927	4 (a)(ii)	1105	1106	1852	1.00
1107	30.5031852	140.4403747	4 (a)(ii)	1106	1107	1852	1.00
1108	30.5089665	140.4584758	4 (a)(ii)	1107	1108	1852	1.00
1109	30.5144849	140.4766846	4 (a)(ii)	1108	1109	1852	1.00
1110	30.5197347	140.4950013	4 (a)(ii)	1109	1110	1852	1.00
1111	30.5247179	140.5134190	4 (a)(ii)	1110	1111	1852	1.00
1112	30.5294325	140.5319310	4 (a)(ii)	1111	1112	1852	1.00
1113	30.5338747	140.5505306	4 (a)(ii)	1112	1113	1852	1.00
1114	30.5380465	140.5692178	4 (a)(ii)	1113	1114	1852	1.00
1115	30.5419460	140.5879836	4 (a)(ii)	1114	1115	1852	1.00
1116	30.5455712	140.6068236	4 (a)(ii)	1115	1116	1852	1.00
1117	30.5489223	140.6257308	4 (a)(ii)	1116	1117	1852	1.00
1118	30.5519972	140.6447010	4 (a)(ii)	1117	1118	1852	1.00
1119	30.5547941	140.6637296	4 (a)(ii)	1118	1119	1852	1.00
1120	30.5573149	140.6828120	4 (a)(ii)	1119	1120	1852	1.00
1121	30.5595558	140.7019394	4 (a)(ii)	1120	1121	1852	1.00
1122	30.5615188	140.7211072	4 (a)(ii)	1121	1122	1852	1.00
1123	30.5632018	140.7403132	4 (a)(ii)	1122	1123	1852	1.00
1124	30.5646050	140.7595484	4 (a)(ii)	1123	1124	1852	1.00
1125	30.5657282	140.7788083	4 (a)(ii)	1124	1125	1852	1.00
1126	30.5665697	140.7980861	4 (a)(ii)	1125	1126	1852	1.00



## Le plateau continental français

n° du Point Fixe	Latitude Sud	Longitude Ouest	Méthode Article 76	de PF	à PF	Distance m	Distance M
1127	30.5671314	140.8173797	4 (a)(ii)	1126	1127	1852	1.00
1128	30.5674112	140.8366800	4 (a)(ii)	1127	1128	1852	1.00
1129	30.5674093	140.8559848	4 (a)(ii)	1128	1129	1852	1.00
1130	30.9496134	141.9159699	1	1129	1130	109766	59.27
<b>Archipel des Tuamotu – Zone est</b>							
1131	20.9773485	128.4726502	4 (a)(ii)				
1132	20.9616864	128.4746444	4 (a)(ii)	1131	1132	1753	0.95
1133	20.9451154	128.4770542	4 (a)(ii)	1132	1133	1852	1.00
1134	20.9285827	128.4797581	4 (a)(ii)	1133	1134	1852	1.00
1135	20.9120946	128.4827540	4 (a)(ii)	1134	1135	1852	1.00
1136	20.8956553	128.4860396	4 (a)(ii)	1135	1136	1852	1.00
1137	20.8792690	128.4896171	4 (a)(ii)	1136	1137	1852	1.00
1138	20.8629421	128.4934821	4 (a)(ii)	1137	1138	1852	1.00
1139	20.8466789	128.4976368	4 (a)(ii)	1138	1139	1852	1.00
1140	20.8304815	128.5020790	4 (a)(ii)	1139	1140	1852	1.00
1141	20.8143562	128.5068041	4 (a)(ii)	1140	1141	1852	1.00
1142	20.7983052	128.5118145	4 (a)(ii)	1141	1142	1852	1.00
1143	20.7823370	128.5171078	4 (a)(ii)	1142	1143	1852	1.00
1144	20.7489737	128.5284782	4 (a)(ii)	1143	1144	3891	2.10
1145	20.7330910	128.5340500	4 (a)(ii)	1144	1145	1852	1.00
1146	20.7172954	128.5399026	4 (a)(ii)	1145	1146	1852	1.00
1147	20.7015953	128.5460336	4 (a)(ii)	1146	1147	1852	1.00
1148	20.6859929	128.5524386	4 (a)(ii)	1147	1148	1852	1.00
1149	20.6704904	128.5591175	4 (a)(ii)	1148	1149	1852	1.00
1150	20.6550961	128.5660705	4 (a)(ii)	1149	1150	1852	1.00
1151	20.6398145	128.5732929	4 (a)(ii)	1150	1151	1852	1.00
1152	20.6246454	128.5807826	4 (a)(ii)	1151	1152	1852	1.00
1153	20.6095975	128.5885396	4 (a)(ii)	1152	1153	1852	1.00
1154	20.5946707	128.5965593	4 (a)(ii)	1153	1154	1852	1.00
1155	20.5798735	128.6048395	4 (a)(ii)	1154	1155	1852	1.00
1156	20.5652061	128.6133803	4 (a)(ii)	1155	1156	1852	1.00
1157	20.5506768	128.6221770	4 (a)(ii)	1156	1157	1852	1.00
1158	20.5362836	128.6312298	4 (a)(ii)	1157	1158	1852	1.00
1159	20.5220372	128.6405318	4 (a)(ii)	1158	1159	1852	1.00
1160	20.5079375	128.6500832	4 (a)(ii)	1159	1160	1852	1.00
1161	20.4939868	128.6598816	4 (a)(ii)	1160	1161	1852	1.00
1162	20.4801935	128.6699247	4 (a)(ii)	1161	1162	1852	1.00
1163	20.4665598	128.6802059	4 (a)(ii)	1162	1163	1852	1.00

## Le plateau continental français

n° du Point Fixe	Latitude Sud	Longitude Ouest	Méthode Article 76	de PF	à PF	Distance m	Distance M
1164	20.4530879	128.6907275	4 (a)(ii)	1163	1164	1852	1.00
1165	20.4397819	128.7014825	4 (a)(ii)	1164	1165	1852	1.00
1166	20.4266464	128.7124689	4 (a)(ii)	1165	1166	1852	1.00
1167	20.4136832	128.7236844	4 (a)(ii)	1166	1167	1852	1.00
1168	20.4008990	128.7351267	4 (a)(ii)	1167	1168	1852	1.00
1169	20.3882958	128.7467891	4 (a)(ii)	1168	1169	1852	1.00
1170	19.6456305	129.4478770	4 (a)(ii)	1169	1170	110311	59.56
1171	19.6294293	129.4522765	4 (a)(ii)	1170	1171	1852	1.00
1172	19.6133010	129.4569590	4 (a)(ii)	1171	1172	1852	1.00
1173	19.5972476	129.4619244	4 (a)(ii)	1172	1173	1852	1.00
1174	19.5812735	129.4671705	4 (a)(ii)	1173	1174	1852	1.00
1175	19.5653851	129.4726974	4 (a)(ii)	1174	1175	1852	1.00
1176	19.5495867	129.4784983	4 (a)(ii)	1175	1176	1852	1.00
1177	19.5338825	129.4845777	4 (a)(ii)	1176	1177	1852	1.00
1178	19.5182747	129.4909287	4 (a)(ii)	1177	1178	1852	1.00
1179	19.5027697	129.4975538	4 (a)(ii)	1178	1179	1852	1.00
1180	19.4873697	129.5044484	4 (a)(ii)	1179	1180	1852	1.00
1181	19.4720833	129.5116125	4 (a)(ii)	1180	1181	1852	1.00
1182	19.4569104	129.5190415	4 (a)(ii)	1181	1182	1852	1.00
1183	19.4418575	129.5267333	4 (a)(ii)	1182	1183	1852	1.00
1184	19.4269268	129.5346902	4 (a)(ii)	1183	1184	1852	1.00
1185	19.4121226	129.5429053	4 (a)(ii)	1184	1185	1852	1.00
1186	19.3974534	129.5513764	4 (a)(ii)	1185	1186	1852	1.00
1187	19.3829171	129.5601035	4 (a)(ii)	1186	1187	1852	1.00
1188	19.3685201	129.5690844	4 (a)(ii)	1187	1188	1852	1.00
1189	19.3542669	129.5783124	4 (a)(ii)	1188	1189	1852	1.00
1190	18.5488488	130.1121183	4 (a)(ii)	1189	1190	105628	57.03
1191	18.5379477	130.1234999	4 (a)(ii)	1190	1191	1704	0.92
1192	18.5348566	130.1267945	4 (a)(ii)	1191	1192	488	0.26
1193	18.5238046	130.1387331	4 (a)(ii)	1192	1193	1758	0.95
1194	18.5123491	130.1515139	4 (a)(ii)	1193	1194	1852	1.00
1195	18.5010964	130.1644923	4 (a)(ii)	1194	1195	1852	1.00
1196	18.4900508	130.1776638	4 (a)(ii)	1195	1196	1852	1.00
1197	18.4792166	130.1910240	4 (a)(ii)	1196	1197	1852	1.00
1198	18.4685939	130.2045706	4 (a)(ii)	1197	1198	1852	1.00
1199	18.4581870	130.2182991	4 (a)(ii)	1198	1199	1852	1.00
1200	18.4479980	130.2322050	4 (a)(ii)	1199	1200	1852	1.00
1201	18.3749837	130.3350419	4 (a)(ii)	1200	1201	13542	7.31

## Le plateau continental français

n° du Point Fixe	Latitude Sud	Longitude Ouest	Méthode Article 76	de PF	à PF	Distance m	Distance M
1202	18.3650171	130.3491163	4 (a)(ii)	1201	1202	1852	1.00
1203	18.3552750	130.3633613	4 (a)(ii)	1202	1203	1852	1.00
1204	18.3457598	130.3777725	4 (a)(ii)	1203	1204	1852	1.00
1205	18.3364734	130.3923477	4 (a)(ii)	1204	1205	1852	1.00
1206	18.3274183	130.4070801	4 (a)(ii)	1205	1206	1852	1.00
1207	18.3185985	130.4219674	4 (a)(ii)	1206	1207	1852	1.00
1208	18.3100165	130.4370052	4 (a)(ii)	1207	1208	1852	1.00
1209	18.3016742	130.4521867	4 (a)(ii)	1208	1209	1852	1.00
1210	18.2935718	130.4675142	4 (a)(ii)	1209	1210	1852	1.00
1211	18.2857158	130.4829765	4 (a)(ii)	1210	1211	1852	1.00
1212	18.2781039	130.4985735	4 (a)(ii)	1211	1212	1852	1.00
1213	18.2707385	130.5142985	4 (a)(ii)	1212	1213	1852	1.00
1214	18.2636259	130.5301515	4 (a)(ii)	1213	1214	1852	1.00
1215	18.2567641	130.5461213	4 (a)(ii)	1214	1215	1852	1.00
1216	18.2501552	130.5622101	4 (a)(ii)	1215	1216	1852	1.00
1217	18.2438036	130.5784090	4 (a)(ii)	1216	1217	1852	1.00
1218	18.2377092	130.5947179	4 (a)(ii)	1217	1218	1852	1.00
1219	18.2318743	130.6111279	4 (a)(ii)	1218	1219	1852	1.00
1220	18.2262989	130.6276367	4 (a)(ii)	1219	1220	1852	1.00
1221	18.2209851	130.6442376	4 (a)(ii)	1220	1221	1852	1.00
1222	18.2159373	130.6609305	4 (a)(ii)	1221	1222	1852	1.00
1223	18.2111533	130.6777065	4 (a)(ii)	1222	1223	1852	1.00
1224	18.2066353	130.6945634	4 (a)(ii)	1223	1224	1852	1.00
1225	18.2023855	130.7114967	4 (a)(ii)	1224	1225	1852	1.00
1226	18.1984039	130.7284995	4 (a)(ii)	1225	1226	1852	1.00
1227	18.1946927	130.7455675	4 (a)(ii)	1226	1227	1852	1.00
1228	18.1912519	130.7627006	4 (a)(ii)	1227	1228	1852	1.00
1229	18.1880836	130.7798877	4 (a)(ii)	1228	1229	1852	1.00
1230	18.1851857	130.7971286	4 (a)(ii)	1229	1230	1852	1.00
1231	18.1825626	130.8144167	4 (a)(ii)	1230	1231	1852	1.00
1232	18.1802141	130.8317474	4 (a)(ii)	1231	1232	1852	1.00
1233	18.1781404	130.8491163	4 (a)(ii)	1232	1233	1852	1.00
1234	18.1763437	130.8665189	4 (a)(ii)	1233	1234	1852	1.00
1235	18.1748195	130.8839507	4 (a)(ii)	1234	1235	1852	1.00
1236	18.1735744	130.9014050	4 (a)(ii)	1235	1236	1852	1.00
1237	18.1726041	130.9188795	4 (a)(ii)	1236	1237	1852	1.00
1238	18.1719106	130.9363674	4 (a)(ii)	1237	1238	1852	1.00
1239	18.1714942	130.9538644	4 (a)(ii)	1238	1239	1852	1.00

## Le plateau continental français

n° du Point Fixe	Latitude Sud	Longitude Ouest	Méthode Article 76	de PF	à PF	Distance m	Distance M
1240	18.1713568	130.9713681	4 (a)(ii)	1239	1240	1852	1.00
1241	18.1714920	130.9887145	4 (a)(ii)	1240	1241	1831	0.99
1242	18.1719064	131.0062137	4 (a)(ii)	1241	1242	1852	1.00
1243	18.1725955	131.0237017	4 (a)(ii)	1242	1243	1852	1.00
1244	18.1735636	131.0411761	4 (a)(ii)	1243	1244	1852	1.00
1245	18.2214894	132.0696910	4 (a)(ii)	1244	1245	108703	58.69
1246	18.2104429	132.0828401	4 (a)(ii)	1245	1246	1852	1.00
1247	18.1996059	132.0961778	4 (a)(ii)	1246	1247	1852	1.00
1248	18.1889830	132.1097020	4 (a)(ii)	1247	1248	1852	1.00
1249	18.1785741	132.1234080	4 (a)(ii)	1248	1249	1852	1.00
1250	18.1683856	132.1372915	4 (a)(ii)	1249	1250	1852	1.00
1251	17.5621390	132.9514705	1	1250	1251	109330	59.03

## Le plateau continental français

### Annexe 2 : La limite extérieure indicative du plateau continental au large des îles Wallis et Futuna

Tableau 2: Liste indicative des coordonnées définissant la limite extérieure du plateau continental au large des îles Wallis et Futuna

Toutes les coordonnées sont exprimées en degrés dans le système géodésique WGS 84

n° du Point Fixe	Latitude Sud	Longitude Ouest	Méthode Article 76	de PF	à PF	Distance m	Distance M
1	8.2616745	176.9237966	4 (a)(ii)				
2	8.2568511	176.8366398	4 (a)(ii)	1	2	9599	5,18
3	8.2568511	176.8221137	4 (a)(ii)	2	3	1597	0,86
4	8.2568511	176.8075875	4 (a)(ii)	3	4	1597	0,86
5	8.2616745	176.7204307	4 (a)(ii)	4	5	9599	5,18
6	8.2664979	176.6865364	4 (a)(ii)	5	6	3766	2,03
7	8.2713213	176.6526421	4 (a)(ii)	6	7	3766	2,03
8	8.2809678	176.6042216	4 (a)(ii)	7	8	5431	2,93
9	8.4352788	175.8875989	4 (a)(ii)	8	9	80630	43,54