



Continental Shelf Submission of the Republic of Indonesia

Partial Submission with respect to
the Area of North of Papua

Eauripik Rise

EXECUTIVE SUMMARY

Papua
Indonesia



Papua
New Guinea

Continental Shelf Submission of the Republic of Indonesia

Partial Submission in respect of
The Area of North of Papua

Executive Summary

**Government of the Republic of Indonesia
2018**

Table of Contents

1. Introduction.....	3
2. Outer Limit of the Continental Shelf in the area of North of Papua.....	4
3. Specific provision of Article 76 invoked to support this submission.....	5
4. Ministries and Institutions Involved for the Preparation of the Submission..	6
5. Names of Commission member who provided advice during the preparation of partial submission	6
6. Absence of dispute.....	6
7. Detailed description of the outer limit of the extended continental shelf in the area of North of Papua.	7

List of Figure

Figure 1. An Overview of the Area of Extended Continental Shelf in respect of the area of North of Papua 5

Appendix

Appendix 1: List of coordinates defining the outer limits of extended continental shelf in the area of North of Papua (All coordinates relate to the WGS 84 geodetic reference system)..... 8

1. Introduction

The Republic of Indonesia presents to the Commission on the Limit of the Continental Shelf (CLCS), this partial submission concerning the outer limit of the continental shelf beyond 200 M in the area of North of Papua (Eauripik Rise) based on the 1982 United Nations Convention on the Law of the Sea (hereinafter referred to as UNCLOS 1982 or the Convention). It aims to complement the previous submission and serves as second partial submission of Indonesia. Indonesia has submitted its first partial submission with respect to the area of West of Sumatera on June 2008 and received the Commission on Limit of the Continental Shelf's (hereinafter referred to as the Commission) recommendation on March 2011. Indonesia still reserves its right to make submission of the outer limits of the extended continental shelf of Indonesia in other areas at a later stage.

Indonesia is the largest archipelagic state located in between two oceans, Indian Ocean and Pacific Ocean, and two continents, Asia and Australia. On 13 December 1957, it declared itself as an archipelagic state through Djoenda Declaration. The spirit of the declaration is stipulated in the constitution and served as strong foundation for Indonesia's efforts for the recognition of the archipelagic state principle as adopted in the UNCLOS 1982, which was ratified by the nation in Law No. 17 of 1985.

Prior to the adoption of the UNCLOS 1982, Indonesia already regulated its continental shelf pursuant to international law through Law No. 1 Year 1973. Indonesia also established its continental shelf through a number of agreements on the delimitation of continental shelf with a number of its neighboring states in various sea areas namely with India in Indian Ocean and Andaman Sea, Thailand in the Andaman Sea, Malaysia in the Strait of Malacca and South China Sea, Papua New Guinea in the Pacific Ocean and Arafura Sea, and Australia in Timor Sea and Arafura Sea. Afterwards, Indonesia has agreed on the Continental Shelf boundary with Vietnam.

As a faithful party of the Convention, Indonesia enacted various laws and regulations to clearly distinguish its rights and obligations in different maritime

zones namely Law No. 6 Year 1996 on Indonesian Waters, Law No. 43 Year 2008 on Indonesian Territory, Law No. 5 Year 1983 on Exclusive Economic Zone, and Law No. 32 Year 2014 on Ocean. These laws outline not only a clear distinction of Indonesia maritime zones and Indonesia's right to regulate and exploit natural resources within its jurisdiction, but also draw some of the obligations that should be fulfilled by Indonesia such as the obligation to establish archipelagic baseline. The regulation on archipelagic baseline is enacted through Government Regulation No 38 Year 2002 and Government Regulation No. 37 Year 2008 and deposited to the UN Secretary General on 25 March 2009, made Indonesia as the first archipelagic state to comply with the provision of the Convention on archipelagic baseline.

2. Outer Limit of the Continental Shelf in the area of North of Papua

This present submission establishes that the natural prolongation of the Indonesian territory in the North of Papua to the outer edge of the continental margin extends beyond 200 M in the Eauripik Rise. Data and information were derived from Indonesian National Bathymetry Data (INBD). INBD is a bathymetry data set derived from various altimetry satellite data which then be assimilated with available bathymetric surveys data conducted by national and international institutions in the Indonesian waters.

The outer limit of the continental shelf beyond 200 M in this area is delineated in accordance with the rules and procedures provided in the Article 76 of UNCLOS 1982, the Scientific and Technical Guidelines of the Commission on the Limits of the Continental Shelf (CLCS/11) and Rules of Procedures of the Commission on the Limits of the Continental Shelf (CLCS/40/Rev.1).

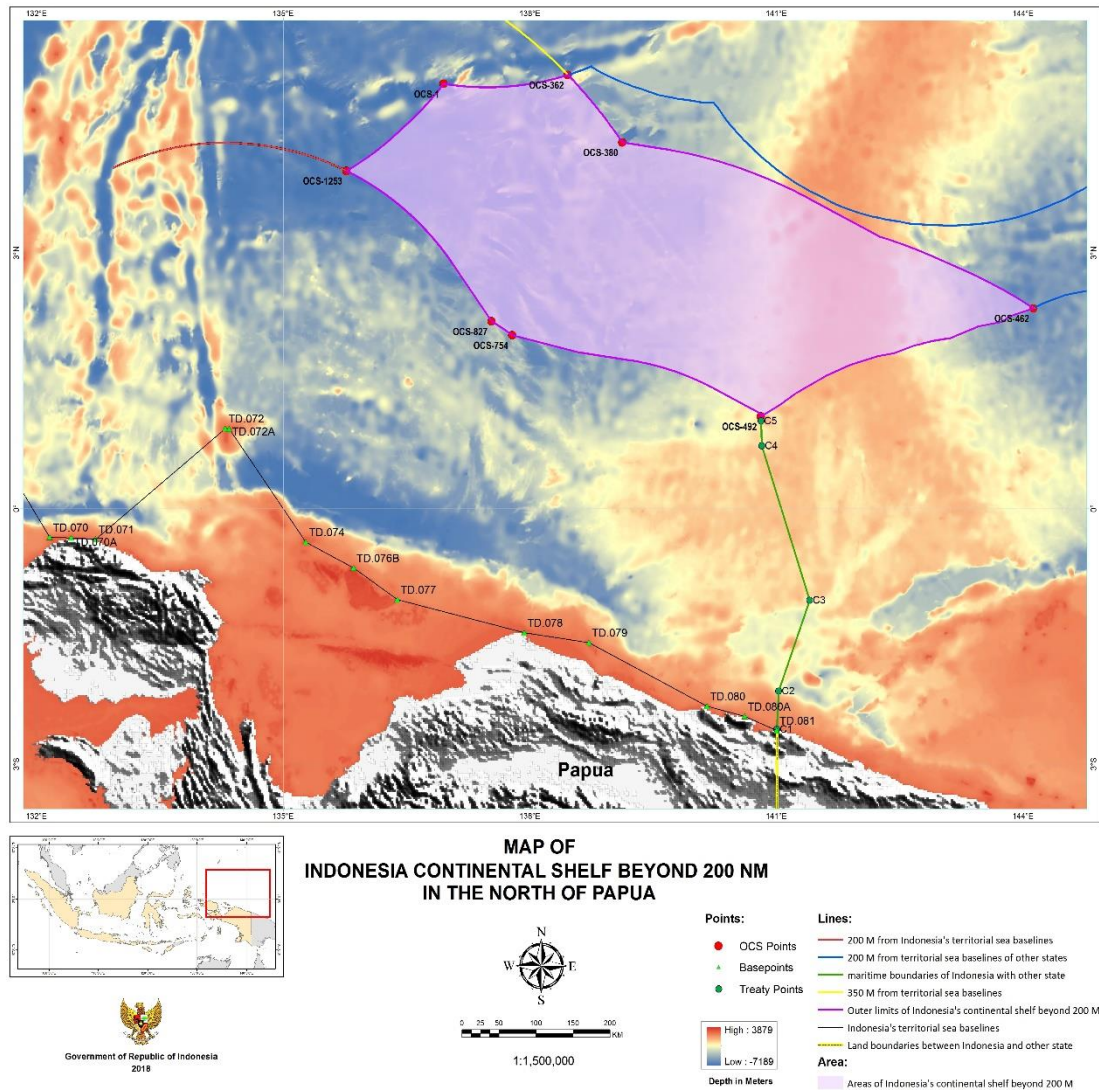


Figure 1. An Overview of the Area of Extended Continental Shelf in respect of the area of North of Papua

3. Specific provision of Article 76 invoked to support this submission

The outer limits contained in this partial submission are based on the provision of Article 76 paragraph 1, paragraph 4 (a)(ii), paragraph 6, and paragraph 7 of UNCLOS 1982.

4. Ministries and Institutions Involved for the Preparation of the Submission

The preparation of documents, maps, charts and geospatial database, as well as, collection of other data used in Indonesia's submission were carried out with cooperation of relevant ministries and institutions as follows:

- The Coordinating Ministry of Maritime Affairs
- Ministry of Foreign Affairs
- Ministry of Energy and Mineral Resources
- Ministry of Marine Affairs and Fisheries
- Ministry of Transportation
- Geospatial Information Agency
- Agency for the Assessment and Application of Technology
- Indonesian Institute of Sciences
- Hydrographic and Oceanographic Centre Indonesian Navy

5. Names of Commission member who provided advice during the preparation of partial submission

No member of the Commission on the Limits of the Continental Shelf assisted Indonesia in the preparation of this partial submission.

6. Absence of dispute

Indonesia wishes to inform the Commission that the area of continental shelf in the area of North of Papua, that is the subject of this partial submission, is not subject to any dispute between Indonesia with any other state. Nevertheless, Indonesia is fully aware that there are potential overlapping entitlements to continental shelf beyond 200 M with opposite or adjacent coastal states namely

Federated States of Micronesia (FSM), Independent States of Papua New Guinea (PNG) and Republic of Palau. Therefore, Indonesia requests the Commission to examine its submission concerning the area of north of Papua without prejudice to the question of delimitation of the continental shelf with opposite or adjacent coastal states as mandated by Article 76 paragraph 10 of UNCLOS 1982.

7. Detailed description of the outer limit of the extended continental shelf in the area of North of Papua.

Applying the relevant provisions of article 76 UNCLOS 1982, Indonesia has delineated its outer limit of extended continental shelf beyond 200 M in the area of north of Papua by utilizing the Hedberg Formula. Twelve (12) points of Foot of Slope (FOS) have been identified at both sides of Eauripik Rise resulting in the delineation of 1290 fixed points of the outer limit of Indonesia Continental Shelf beyond 200 M in the area of north of Papua. The outer limit has taken into consideration the following constraints namely:

- Maximum distance of 60 M between the two adjacent fixed points
- The 350 M projection line from Indonesian Archipelagic baseline,
- The Palau 200 M Continental Shelf, PNG 200 M continental shelf and 200 M FSM continental shelf.

The outer limit of the Indonesia continental shelf beyond 200 M encloses area of approximately **196,568.9 km sq.**

The coordinates of the fixed points and the lengths of the connecting straight lines are listed in Appendix 1.

Appendix 1

Table 1. List of coordinates defining the outer limits of extended continental shelf in the area of North of Papua

OCS_CODE	LONGITUDE		LATITUDE		Distance to next point	Article 76 Provision
	DMS	DD	DMS	DD	Nautical Miles	Invoked
OCS-1	136° 56' 57.706" E	136.949363	4° 59' 0.910" N	4.983586	0.0356	200 NM FSM
OCS-2	136° 56' 59.813" E	136.949948	4° 59' 0.569" N	4.983491	0.1094	200 NM FSM
OCS-3	136° 57' 6.287" E	136.951746	4° 58' 59.532" N	4.983203	0.4378	200 NM FSM
OCS-4	136° 57' 32.202" E	136.958945	4° 58' 55.415" N	4.98206	0.1094	200 NM FSM
OCS-5	136° 57' 38.679" E	136.960744	4° 58' 54.395" N	4.981776	0.2188	200 NM FSM
OCS-6	136° 57' 51.638" E	136.964344	4° 58' 52.372" N	4.981214	0.1094	200 NM FSM
OCS-7	136° 57' 58.116" E	136.966143	4° 58' 51.370" N	4.980936	0.8757	200 NM FSM
OCS-8	136° 58' 49.995" E	136.980554	4° 58' 43.416" N	4.978727	0.1093	200 NM FSM
OCS-9	136° 58' 56.475" E	136.982354	4° 58' 42.432" N	4.978453	0.2188	200 NM FSM
OCS-10	136° 59' 9.445" E	136.985957	4° 58' 40.480" N	4.977911	0.1094	200 NM FSM
OCS-11	136° 59' 15.930" E	136.987758	4° 58' 39.512" N	4.977642	0.4378	200 NM FSM
OCS-12	136° 59' 41.887" E	136.994969	4° 58' 35.677" N	4.976577	0.1094	200 NM FSM
OCS-13	136° 59' 48.375" E	136.996771	4° 58' 34.728" N	4.976313	0.1049	200 NM FSM
OCS-14	136° 59' 54.595" E	136.998499	4° 58' 33.826" N	4.976063	0.1140	200 NM FSM
OCS-15	137° 0' 1.355" E	137.000376	4° 58' 32.846" N	4.975791	0.1094	200 NM FSM
OCS-16	137° 0' 7.843" E	137.002179	4° 58' 31.914" N	4.975532	0.8757	200 NM FSM
OCS-17	137° 0' 59.805" E	137.016613	4° 58' 24.525" N	4.973479	0.1093	200 NM FSM
OCS-18	137° 1' 6.295" E	137.018415	4° 58' 23.611" N	4.973225	0.2188	200 NM FSM
OCS-19	137° 1' 19.286" E	137.022024	4° 58' 21.800" N	4.972722	0.1094	200 NM FSM
OCS-20	137° 1' 25.781" E	137.023828	4° 58' 20.903" N	4.972473	0.4378	200 NM FSM
OCS-21	137° 1' 51.778" E	137.031049	4° 58' 17.350" N	4.971486	0.1094	200 NM FSM
OCS-22	137° 1' 58.275" E	137.032854	4° 58' 16.471" N	4.971242	0.2188	200 NM FSM
OCS-23	137° 2' 11.275" E	137.036465	4° 58' 14.730" N	4.970758	0.1094	200 NM FSM
OCS-24	137° 2' 17.773" E	137.03827	4° 58' 13.869" N	4.970519	0.8757	200 NM FSM
OCS-25	137° 3' 9.811" E	137.052725	4° 58' 7.045" N	4.968624	0.1094	200 NM FSM
OCS-26	137° 3' 16.311" E	137.054531	4° 58' 6.202" N	4.968389	0.2188	200 NM FSM
OCS-27	137° 3' 29.320" E	137.058145	4° 58' 4.532" N	4.967925	0.1094	200 NM FSM
OCS-28	137° 3' 35.824" E	137.059951	4° 58' 3.706" N	4.967696	0.4378	200 NM FSM
OCS-29	137° 4' 1.858" E	137.067183	4° 58' 0.435" N	4.966788	0.1094	200 NM FSM
OCS-30	137° 4' 8.364" E	137.06899	4° 57' 59.627" N	4.966563	0.2188	200 NM FSM
OCS-31	137° 4' 21.382" E	137.072606	4° 57' 58.028" N	4.966119	0.1094	200 NM FSM
OCS-32	137° 4' 27.888" E	137.074413	4° 57' 57.237" N	4.965899	0.8757	200 NM FSM
OCS-33	137° 5' 19.997" E	137.088888	4° 57' 50.979" N	4.964161	0.1094	200 NM FSM
OCS-34	137° 5' 26.505" E	137.090696	4° 57' 50.206" N	4.963946	0.2188	200 NM FSM
OCS-35	137° 5' 39.532" E	137.094314	4° 57' 48.678" N	4.963522	0.1094	200 NM FSM
OCS-36	137° 5' 46.044" E	137.096123	4° 57' 47.922" N	4.963312	0.4378	200 NM FSM
OCS-37	137° 6' 12.112" E	137.103364	4° 57' 44.935" N	4.962482	0.1094	200 NM FSM

OCS-38	137° 6' 18.626" E	137.105174	4° 57' 44.198" N	4.962277	0.2188	200 NM FSM
OCS-39	137° 6' 31.661" E	137.108795	4° 57' 42.740" N	4.961872	0.1094	200 NM FSM
OCS-40	137° 6' 38.175" E	137.110604	4° 57' 42.020" N	4.961672	0.8756	200 NM FSM
OCS-41	137° 7' 30.348" E	137.125097	4° 57' 36.328" N	4.960091	0.1094	200 NM FSM
OCS-42	137° 7' 36.865" E	137.126907	4° 57' 35.626" N	4.959896	0.2188	200 NM FSM
OCS-43	137° 7' 49.907" E	137.13053	4° 57' 34.239" N	4.959511	0.1094	200 NM FSM
OCS-44	137° 7' 56.426" E	137.132341	4° 57' 33.555" N	4.959321	0.4378	200 NM FSM
OCS-45	137° 8' 22.524" E	137.13959	4° 57' 30.851" N	4.95857	0.1094	200 NM FSM
OCS-46	137° 8' 29.046" E	137.141402	4° 57' 30.185" N	4.958385	0.2188	200 NM FSM
OCS-47	137° 8' 42.096" E	137.145027	4° 57' 28.869" N	4.958019	0.1094	200 NM FSM
OCS-48	137° 8' 48.618" E	137.146838	4° 57' 28.220" N	4.957839	0.8756	200 NM FSM
OCS-49	137° 9' 40.849" E	137.161347	4° 57' 23.095" N	4.956415	0.1093	200 NM FSM
OCS-50	137° 9' 47.372" E	137.163159	4° 57' 22.464" N	4.95624	0.2188	200 NM FSM
OCS-51	137° 10' 0.428" E	137.166786	4° 57' 21.219" N	4.955894	0.1094	200 NM FSM
OCS-52	137° 10' 6.956" E	137.168599	4° 57' 20.605" N	4.955724	0.4378	200 NM FSM
OCS-53	137° 10' 33.082" E	137.175856	4° 57' 18.185" N	4.955051	0.1094	200 NM FSM
OCS-54	137° 10' 39.611" E	137.17767	4° 57' 17.590" N	4.954886	0.2188	200 NM FSM
OCS-55	137° 10' 52.673" E	137.181298	4° 57' 16.415" N	4.95456	0.1094	200 NM FSM
OCS-56	137° 10' 59.202" E	137.183112	4° 57' 15.838" N	4.954399	0.8756	200 NM FSM
OCS-57	137° 11' 51.485" E	137.197635	4° 57' 11.281" N	4.953134	0.1094	200 NM FSM
OCS-58	137° 11' 58.015" E	137.199448	4° 57' 10.721" N	4.952978	0.2188	200 NM FSM
OCS-59	137° 12' 11.083" E	137.203079	4° 57' 9.617" N	4.952672	0.1094	200 NM FSM
OCS-60	137° 12' 17.617" E	137.204893	4° 57' 9.075" N	4.952521	0.4378	200 NM FSM
OCS-61	137° 12' 43.767" E	137.212157	4° 57' 6.939" N	4.951927	0.1094	200 NM FSM
OCS-62	137° 12' 50.301" E	137.213972	4° 57' 6.414" N	4.951782	0.2188	200 NM FSM
OCS-63	137° 13' 3.375" E	137.217604	4° 57' 5.382" N	4.951495	0.1094	200 NM FSM
OCS-64	137° 13' 9.910" E	137.219419	4° 57' 4.875" N	4.951354	0.8756	200 NM FSM
OCS-65	137° 14' 2.239" E	137.233955	4° 57' 0.887" N	4.950246	0.1094	200 NM FSM
OCS-66	137° 14' 8.775" E	137.235771	4° 57' 0.398" N	4.95011	0.2188	200 NM FSM
OCS-67	137° 14' 21.855" E	137.239404	4° 56' 59.436" N	4.949843	0.1094	200 NM FSM
OCS-68	137° 14' 28.394" E	137.241221	4° 56' 58.965" N	4.949712	0.4378	200 NM FSM
OCS-69	137° 14' 54.566" E	137.24849	4° 56' 57.113" N	4.949198	0.1094	200 NM FSM
OCS-70	137° 15' 1.105" E	137.250307	4° 56' 56.659" N	4.949072	0.2188	200 NM FSM
OCS-71	137° 15' 14.190" E	137.253942	4° 56' 55.769" N	4.948825	0.1094	200 NM FSM
OCS-72	137° 15' 20.730" E	137.255758	4° 56' 55.334" N	4.948704	0.8756	200 NM FSM
OCS-73	137° 16' 13.099" E	137.270305	4° 56' 51.914" N	4.947754	0.1094	200 NM FSM
OCS-74	137° 16' 19.639" E	137.272122	4° 56' 51.496" N	4.947638	0.2188	200 NM FSM
OCS-75	137° 16' 32.729" E	137.275758	4° 56' 50.677" N	4.94741	0.1094	200 NM FSM
OCS-76	137° 16' 39.272" E	137.277576	4° 56' 50.277" N	4.947299	0.4378	200 NM FSM
OCS-77	137° 17' 5.462" E	137.284851	4° 56' 48.709" N	4.946864	0.1094	200 NM FSM
OCS-78	137° 17' 12.007" E	137.286669	4° 56' 48.327" N	4.946757	0.2188	200 NM FSM
OCS-79	137° 17' 25.100" E	137.290306	4° 56' 47.579" N	4.94655	0.1094	200 NM FSM
OCS-80	137° 17' 31.644" E	137.292123	4° 56' 47.214" N	4.946448	0.8756	200 NM FSM
OCS-81	137° 18' 24.047" E	137.30668	4° 56' 44.364" N	4.945657	0.1094	200 NM FSM
OCS-82	137° 18' 30.592" E	137.308498	4° 56' 44.017" N	4.94556	0.2188	200 NM FSM
OCS-83	137° 18' 43.689" E	137.312136	4° 56' 43.340" N	4.945372	0.1094	200 NM FSM
OCS-84	137° 18' 50.236" E	137.313954	4° 56' 43.011" N	4.945281	0.4378	200 NM FSM
OCS-85	137° 19' 16.441" E	137.321234	4° 56' 41.729" N	4.944925	0.1094	200 NM FSM

OCS-86	137° 19' 22.990" E	137.323053	4° 56' 41.417" N	4.944838	0.2188	200 NM FSM
OCS-87	137° 19' 36.090" E	137.326692	4° 56' 40.812" N	4.94467	0.1094	200 NM FSM
OCS-88	137° 19' 42.638" E	137.32851	4° 56' 40.518" N	4.944588	0.8756	200 NM FSM
OCS-89	137° 20' 35.068" E	137.343074	4° 56' 38.237" N	4.943955	0.1093	200 NM FSM
OCS-90	137° 20' 41.616" E	137.344893	4° 56' 37.962" N	4.943878	0.2188	200 NM FSM
OCS-91	137° 20' 54.720" E	137.348533	4° 56' 37.427" N	4.94373	0.1094	200 NM FSM
OCS-92	137° 21' 1.270" E	137.350353	4° 56' 37.169" N	4.943658	0.4378	200 NM FSM
OCS-93	137° 21' 27.488" E	137.357636	4° 56' 36.171" N	4.943381	0.1094	200 NM FSM
OCS-94	137° 21' 34.039" E	137.359455	4° 56' 35.931" N	4.943314	0.2188	200 NM FSM
OCS-95	137° 21' 47.146" E	137.363096	4° 56' 35.468" N	4.943186	0.1094	200 NM FSM
OCS-96	137° 21' 53.696" E	137.364916	4° 56' 35.245" N	4.943124	0.8756	200 NM FSM
OCS-97	137° 22' 46.148" E	137.379485	4° 56' 33.535" N	4.942649	0.1093	200 NM FSM
OCS-98	137° 22' 52.698" E	137.381305	4° 56' 33.330" N	4.942592	0.2188	200 NM FSM
OCS-99	137° 23' 5.807" E	137.384946	4° 56' 32.938" N	4.942483	0.1094	200 NM FSM
OCS-100	137° 23' 12.360" E	137.386767	4° 56' 32.751" N	4.942431	0.4378	200 NM FSM
OCS-101	137° 23' 38.587" E	137.394052	4° 56' 32.039" N	4.942233	0.1094	200 NM FSM
OCS-102	137° 23' 45.140" E	137.395872	4° 56' 31.869" N	4.942186	0.2188	200 NM FSM
OCS-103	137° 23' 58.251" E	137.399514	4° 56' 31.549" N	4.942097	0.1094	200 NM FSM
OCS-104	137° 24' 4.803" E	137.401334	4° 56' 31.398" N	4.942055	0.8756	200 NM FSM
OCS-105	137° 24' 57.270" E	137.415908	4° 56' 30.257" N	4.941738	0.1094	200 NM FSM
OCS-106	137° 25' 3.823" E	137.417729	4° 56' 30.123" N	4.941701	0.2188	200 NM FSM
OCS-107	137° 25' 16.935" E	137.421371	4° 56' 29.874" N	4.941632	0.1094	200 NM FSM
OCS-108	137° 25' 23.490" E	137.423192	4° 56' 29.758" N	4.9416	0.4378	200 NM FSM
OCS-109	137° 25' 49.723" E	137.430479	4° 56' 29.331" N	4.941481	0.1094	200 NM FSM
OCS-110	137° 25' 56.277" E	137.432299	4° 56' 29.233" N	4.941454	0.2188	200 NM FSM
OCS-111	137° 26' 9.390" E	137.435942	4° 56' 29.055" N	4.941404	0.1094	200 NM FSM
OCS-112	137° 26' 15.944" E	137.437762	4° 56' 28.975" N	4.941382	0.8756	200 NM FSM
OCS-113	137° 27' 8.420" E	137.452339	4° 56' 28.404" N	4.941223	0.1092	200 NM FSM
OCS-114	137° 27' 14.964" E	137.454157	4° 56' 28.342" N	4.941206	0.2185	200 NM FSM
OCS-115	137° 27' 28.060" E	137.457794	4° 56' 28.235" N	4.941176	0.1092	200 NM FSM
OCS-116	137° 27' 34.606" E	137.459613	4° 56' 28.191" N	4.941164	0.4371	200 NM FSM
OCS-117	137° 28' 0.805" E	137.46689	4° 56' 28.048" N	4.941124	0.1092	200 NM FSM
OCS-118	137° 28' 7.352" E	137.468709	4° 56' 28.021" N	4.941117	0.2186	200 NM FSM
OCS-119	137° 28' 20.452" E	137.472348	4° 56' 27.986" N	4.941107	0.1093	200 NM FSM
OCS-120	137° 28' 27.002" E	137.474167	4° 56' 27.977" N	4.941105	0.4621	200 NM FSM
OCS-121	137° 28' 54.695" E	137.48186	4° 56' 28.136" N	4.941149	0.6340	200 NM FSM
OCS-122	137° 29' 32.690" E	137.492414	4° 56' 28.570" N	4.94127	0.1506	200 NM FSM
OCS-123	137° 29' 41.715" E	137.494921	4° 56' 28.554" N	4.941265	0.0731	200 NM FSM
OCS-124	137° 29' 46.094" E	137.496137	4° 56' 28.550" N	4.941264	0.0409	200 NM FSM
OCS-125	137° 29' 48.543" E	137.496817	4° 56' 28.551" N	4.941264	0.0817	200 NM FSM
OCS-126	137° 29' 53.441" E	137.498178	4° 56' 28.556" N	4.941266	0.4473	200 NM FSM
OCS-127	137° 30' 20.237" E	137.505621	4° 56' 29.332" N	4.941481	0.0926	200 NM FSM
OCS-128	137° 30' 25.785" E	137.507163	4° 56' 29.234" N	4.941454	0.0959	200 NM FSM
OCS-129	137° 30' 31.531" E	137.508759	4° 56' 29.245" N	4.941457	0.0568	200 NM FSM
OCS-130	137° 30' 34.933" E	137.509704	4° 56' 29.224" N	4.941451	0.0636	200 NM FSM
OCS-131	137° 30' 38.744" E	137.510762	4° 56' 29.202" N	4.941445	0.1314	200 NM FSM
OCS-132	137° 30' 46.621" E	137.51295	4° 56' 29.160" N	4.941433	0.3812	200 NM FSM
OCS-133	137° 31' 9.469" E	137.519297	4° 56' 29.093" N	4.941415	0.0542	200 NM FSM

OCS-134	137° 31' 12.719" E	137.5202	4° 56' 29.091" N	4.941414	0.3939	200 NM FSM
OCS-135	137° 31' 36.324" E	137.526757	4° 56' 29.296" N	4.941471	0.2055	200 NM FSM
OCS-136	137° 31' 48.637" E	137.530177	4° 56' 29.466" N	4.941518	0.2019	200 NM FSM
OCS-137	137° 32' 0.735" E	137.533537	4° 56' 29.678" N	4.941577	0.1654	200 NM FSM
OCS-138	137° 32' 10.645" E	137.53629	4° 56' 29.862" N	4.941628	0.2055	200 NM FSM
OCS-139	137° 32' 22.961" E	137.539712	4° 56' 30.104" N	4.941695	0.0477	200 NM FSM
OCS-140	137° 32' 25.820" E	137.540506	4° 56' 30.161" N	4.941711	0.1870	200 NM FSM
OCS-141	137° 32' 37.025" E	137.543618	4° 56' 30.502" N	4.941806	0.0469	200 NM FSM
OCS-142	137° 32' 39.835" E	137.544399	4° 56' 30.589" N	4.94183	0.2231	200 NM FSM
OCS-143	137° 32' 53.202" E	137.548112	4° 56' 31.004" N	4.941946	0.4091	200 NM FSM
OCS-144	137° 33' 17.719" E	137.554922	4° 56' 31.280" N	4.942022	0.1496	200 NM FSM
OCS-145	137° 33' 26.681" E	137.557411	4° 56' 31.564" N	4.942101	0.3049	200 NM FSM
OCS-146	137° 33' 44.954" E	137.562487	4° 56' 31.746" N	4.942152	0.7580	200 NM FSM
OCS-147	137° 34' 30.375" E	137.575104	4° 56' 32.629" N	4.942397	0.0545	200 NM FSM
OCS-148	137° 34' 33.640" E	137.576011	4° 56' 32.723" N	4.942423	0.0820	200 NM FSM
OCS-149	137° 34' 38.549" E	137.577375	4° 56' 32.870" N	4.942464	0.1639	200 NM FSM
OCS-150	137° 34' 48.366" E	137.580102	4° 56' 33.174" N	4.942548	0.0819	200 NM FSM
OCS-151	137° 34' 53.272" E	137.581464	4° 56' 33.331" N	4.942592	0.3278	200 NM FSM
OCS-152	137° 35' 12.907" E	137.586919	4° 56' 33.978" N	4.942772	0.0819	200 NM FSM
OCS-153	137° 35' 17.814" E	137.588282	4° 56' 34.145" N	4.942818	0.1638	200 NM FSM
OCS-154	137° 35' 27.628" E	137.591008	4° 56' 34.489" N	4.942914	0.0819	200 NM FSM
OCS-155	137° 35' 32.531" E	137.59237	4° 56' 34.665" N	4.942963	0.7666	200 NM FSM
OCS-156	137° 36' 18.446" E	137.605124	4° 56' 36.367" N	4.943435	0.1023	200 NM FSM
OCS-157	137° 36' 24.575" E	137.606826	4° 56' 36.601" N	4.9435	0.2048	200 NM FSM
OCS-158	137° 36' 36.839" E	137.610233	4° 56' 37.087" N	4.943635	0.1023	200 NM FSM
OCS-159	137° 36' 42.966" E	137.611935	4° 56' 37.338" N	4.943705	0.0413	200 NM FSM
OCS-160	137° 36' 45.438" E	137.612622	4° 56' 37.442" N	4.943734	0.5900	200 NM FSM
OCS-161	137° 37' 20.775" E	137.622437	4° 56' 38.766" N	4.944102	0.1695	200 NM FSM
OCS-162	137° 37' 30.926" E	137.625257	4° 56' 39.168" N	4.944213	0.3392	200 NM FSM
OCS-163	137° 37' 51.239" E	137.6309	4° 56' 40.016" N	4.944449	0.1696	200 NM FSM
OCS-164	137° 38' 1.392" E	137.63372	4° 56' 40.460" N	4.944572	0.6787	200 NM FSM
OCS-165	137° 38' 42.026" E	137.645007	4° 56' 42.327" N	4.945091	0.1696	200 NM FSM
OCS-166	137° 38' 52.179" E	137.647827	4° 56' 42.815" N	4.945226	0.3393	200 NM FSM
OCS-167	137° 39' 12.488" E	137.653469	4° 56' 43.834" N	4.945509	0.1696	200 NM FSM
OCS-168	137° 39' 22.638" E	137.656288	4° 56' 44.364" N	4.945657	0.8756	200 NM FSM
OCS-169	137° 40' 15.041" E	137.670845	4° 56' 47.214" N	4.946448	0.1094	200 NM FSM
OCS-170	137° 40' 21.585" E	137.672662	4° 56' 47.579" N	4.94655	0.2188	200 NM FSM
OCS-171	137° 40' 34.678" E	137.6763	4° 56' 48.327" N	4.946757	0.1094	200 NM FSM
OCS-172	137° 40' 41.223" E	137.678117	4° 56' 48.709" N	4.946864	0.4378	200 NM FSM
OCS-173	137° 41' 7.413" E	137.685392	4° 56' 50.277" N	4.947299	0.1094	200 NM FSM
OCS-174	137° 41' 13.957" E	137.68721	4° 56' 50.677" N	4.94741	0.2188	200 NM FSM
OCS-175	137° 41' 27.046" E	137.690846	4° 56' 51.496" N	4.947638	0.1094	200 NM FSM
OCS-176	137° 41' 33.587" E	137.692663	4° 56' 51.914" N	4.947754	0.8756	200 NM FSM
OCS-177	137° 42' 25.956" E	137.70721	4° 56' 55.334" N	4.948704	0.1094	200 NM FSM
OCS-178	137° 42' 32.496" E	137.709027	4° 56' 55.769" N	4.948825	0.2188	200 NM FSM
OCS-179	137° 42' 45.580" E	137.712661	4° 56' 56.659" N	4.949072	0.1094	200 NM FSM
OCS-180	137° 42' 52.119" E	137.714478	4° 56' 57.113" N	4.949198	0.4378	200 NM FSM
OCS-181	137° 43' 18.291" E	137.721748	4° 56' 58.965" N	4.949712	0.1094	200 NM FSM

OCS-182	137° 43' 24.830" E	137.723564	4° 56' 59.436" N	4.949843	0.2188	200 NM FSM
OCS-183	137° 43' 37.910" E	137.727197	4° 57' 0.398" N	4.95011	0.1094	200 NM FSM
OCS-184	137° 43' 44.446" E	137.729013	4° 57' 0.887" N	4.950246	0.8756	200 NM FSM
OCS-185	137° 44' 36.775" E	137.743549	4° 57' 4.875" N	4.951354	0.1094	200 NM FSM
OCS-186	137° 44' 43.310" E	137.745364	4° 57' 5.382" N	4.951495	0.2188	200 NM FSM
OCS-187	137° 44' 56.384" E	137.748996	4° 57' 6.414" N	4.951782	0.1094	200 NM FSM
OCS-188	137° 45' 2.918" E	137.750811	4° 57' 6.939" N	4.951927	0.4378	200 NM FSM
OCS-189	137° 45' 29.069" E	137.758075	4° 57' 9.075" N	4.952521	0.1094	200 NM FSM
OCS-190	137° 45' 35.602" E	137.759889	4° 57' 9.617" N	4.952672	0.2188	200 NM FSM
OCS-191	137° 45' 48.671" E	137.76352	4° 57' 10.721" N	4.952978	0.1094	200 NM FSM
OCS-192	137° 45' 55.201" E	137.765333	4° 57' 11.281" N	4.953134	0.8756	200 NM FSM
OCS-193	137° 46' 47.484" E	137.779857	4° 57' 15.838" N	4.954399	0.1094	200 NM FSM
OCS-194	137° 46' 54.012" E	137.78167	4° 57' 16.415" N	4.95456	0.2188	200 NM FSM
OCS-195	137° 47' 7.074" E	137.785298	4° 57' 17.590" N	4.954886	0.1094	200 NM FSM
OCS-196	137° 47' 13.603" E	137.787112	4° 57' 18.185" N	4.955051	0.4378	200 NM FSM
OCS-197	137° 47' 39.729" E	137.794369	4° 57' 20.605" N	4.955724	0.1094	200 NM FSM
OCS-198	137° 47' 46.257" E	137.796182	4° 57' 21.219" N	4.955894	0.2188	200 NM FSM
OCS-199	137° 47' 59.313" E	137.799809	4° 57' 22.464" N	4.95624	0.1093	200 NM FSM
OCS-200	137° 48' 5.836" E	137.801621	4° 57' 23.095" N	4.956415	0.8756	200 NM FSM
OCS-201	137° 48' 58.067" E	137.81613	4° 57' 28.220" N	4.957839	0.1094	200 NM FSM
OCS-202	137° 49' 4.589" E	137.817942	4° 57' 28.869" N	4.958019	0.2188	200 NM FSM
OCS-203	137° 49' 17.639" E	137.821566	4° 57' 30.185" N	4.958385	0.1094	200 NM FSM
OCS-204	137° 49' 24.161" E	137.823378	4° 57' 30.851" N	4.95857	0.4378	200 NM FSM
OCS-205	137° 49' 50.259" E	137.830627	4° 57' 33.555" N	4.959321	0.1094	200 NM FSM
OCS-206	137° 49' 56.778" E	137.832438	4° 57' 34.239" N	4.959511	0.2188	200 NM FSM
OCS-207	137° 50' 9.820" E	137.836061	4° 57' 35.626" N	4.959896	0.1094	200 NM FSM
OCS-208	137° 50' 16.337" E	137.837871	4° 57' 36.328" N	4.960091	0.8756	200 NM FSM
OCS-209	137° 51' 8.510" E	137.852364	4° 57' 42.020" N	4.961672	0.1094	200 NM FSM
OCS-210	137° 51' 15.025" E	137.854174	4° 57' 42.740" N	4.961872	0.2188	200 NM FSM
OCS-211	137° 51' 28.059" E	137.857794	4° 57' 44.198" N	4.962277	0.1094	200 NM FSM
OCS-212	137° 51' 34.574" E	137.859604	4° 57' 44.935" N	4.962482	0.4378	200 NM FSM
OCS-213	137° 52' 0.641" E	137.866845	4° 57' 47.922" N	4.963312	0.1094	200 NM FSM
OCS-214	137° 52' 7.153" E	137.868654	4° 57' 48.678" N	4.963522	0.2188	200 NM FSM
OCS-215	137° 52' 20.180" E	137.872272	4° 57' 50.206" N	4.963946	0.1094	200 NM FSM
OCS-216	137° 52' 26.688" E	137.87408	4° 57' 50.979" N	4.964161	0.8757	200 NM FSM
OCS-217	137° 53' 18.797" E	137.888555	4° 57' 57.237" N	4.965899	0.1094	200 NM FSM
OCS-218	137° 53' 25.304" E	137.890362	4° 57' 58.028" N	4.966119	0.2188	200 NM FSM
OCS-219	137° 53' 38.321" E	137.893978	4° 57' 59.627" N	4.966563	0.1094	200 NM FSM
OCS-220	137° 53' 44.827" E	137.895785	4° 58' 0.435" N	4.966788	0.4378	200 NM FSM
OCS-221	137° 54' 10.861" E	137.903017	4° 58' 3.706" N	4.967696	0.1094	200 NM FSM
OCS-222	137° 54' 17.365" E	137.904824	4° 58' 4.532" N	4.967925	0.2188	200 NM FSM
OCS-223	137° 54' 30.375" E	137.908437	4° 58' 6.202" N	4.968389	0.1094	200 NM FSM
OCS-224	137° 54' 36.874" E	137.910243	4° 58' 7.045" N	4.968624	0.8757	200 NM FSM
OCS-225	137° 55' 28.913" E	137.924698	4° 58' 13.869" N	4.970519	0.1094	200 NM FSM
OCS-226	137° 55' 35.410" E	137.926503	4° 58' 14.730" N	4.970758	0.2188	200 NM FSM
OCS-227	137° 55' 48.410" E	137.930114	4° 58' 16.471" N	4.971242	0.1094	200 NM FSM
OCS-228	137° 55' 54.907" E	137.931919	4° 58' 17.350" N	4.971486	0.4378	200 NM FSM
OCS-229	137° 56' 20.904" E	137.93914	4° 58' 20.903" N	4.972473	0.1094	200 NM FSM

OCS-230	137° 56' 27.399" E	137.940944	4° 58' 21.800" N	4.972722	0.2188	200 NM FSM
OCS-231	137° 56' 40.390" E	137.944553	4° 58' 23.611" N	4.973225	0.1094	200 NM FSM
OCS-232	137° 56' 46.880" E	137.946356	4° 58' 24.525" N	4.973479	0.8757	200 NM FSM
OCS-233	137° 57' 38.842" E	137.960789	4° 58' 31.914" N	4.975532	0.1094	200 NM FSM
OCS-234	137° 57' 45.330" E	137.962592	4° 58' 32.846" N	4.975791	0.2188	200 NM FSM
OCS-235	137° 57' 58.311" E	137.966197	4° 58' 34.728" N	4.976313	0.1094	200 NM FSM
OCS-236	137° 58' 4.798" E	137.967999	4° 58' 35.677" N	4.976577	0.4378	200 NM FSM
OCS-237	137° 58' 30.755" E	137.97521	4° 58' 39.512" N	4.977642	0.1094	200 NM FSM
OCS-238	137° 58' 37.240" E	137.977011	4° 58' 40.480" N	4.977911	0.2188	200 NM FSM
OCS-239	137° 58' 50.210" E	137.980614	4° 58' 42.432" N	4.978453	0.1094	200 NM FSM
OCS-240	137° 58' 56.690" E	137.982414	4° 58' 43.416" N	4.978727	0.8757	200 NM FSM
OCS-241	137° 59' 48.570" E	137.996825	4° 58' 51.370" N	4.980936	0.1094	200 NM FSM
OCS-242	137° 59' 55.047" E	137.998624	4° 58' 52.372" N	4.981214	0.2188	200 NM FSM
OCS-243	138° 0' 8.007" E	138.002224	4° 58' 54.395" N	4.981776	0.1094	200 NM FSM
OCS-244	138° 0' 14.483" E	138.004023	4° 58' 55.415" N	4.98206	0.4378	200 NM FSM
OCS-245	138° 0' 40.398" E	138.011222	4° 58' 59.532" N	4.983203	0.1094	200 NM FSM
OCS-246	138° 0' 46.872" E	138.01302	4° 59' 0.569" N	4.983491	0.2188	200 NM FSM
OCS-247	138° 0' 59.821" E	138.016617	4° 59' 2.663" N	4.984073	0.1094	200 NM FSM
OCS-248	138° 1' 6.290" E	138.018414	4° 59' 3.717" N	4.984366	0.8757	200 NM FSM
OCS-249	138° 1' 58.081" E	138.0328	4° 59' 12.234" N	4.986732	0.0560	200 NM FSM
OCS-250	138° 2' 1.395" E	138.033721	4° 59' 12.781" N	4.986884	0.1122	200 NM FSM
OCS-251	138° 2' 8.029" E	138.035564	4° 59' 13.882" N	4.987189	0.0561	200 NM FSM
OCS-252	138° 2' 11.345" E	138.036485	4° 59' 14.434" N	4.987343	0.2245	200 NM FSM
OCS-253	138° 2' 24.619" E	138.040172	4° 59' 16.655" N	4.98796	0.0561	200 NM FSM
OCS-254	138° 2' 27.935" E	138.041093	4° 59' 17.212" N	4.988114	0.1122	200 NM FSM
OCS-255	138° 2' 34.569" E	138.042936	4° 59' 18.331" N	4.988425	0.0561	200 NM FSM
OCS-256	138° 2' 37.883" E	138.043857	4° 59' 18.893" N	4.988581	0.4492	200 NM FSM
OCS-257	138° 3' 4.425" E	138.051229	4° 59' 23.409" N	4.989836	0.0587	200 NM FSM
OCS-258	138° 3' 7.892" E	138.052192	4° 59' 24.002" N	4.990001	0.1174	200 NM FSM
OCS-259	138° 3' 14.830" E	138.054119	4° 59' 25.193" N	4.990331	0.0587	200 NM FSM
OCS-260	138° 3' 18.298" E	138.055083	4° 59' 25.791" N	4.990498	0.2350	200 NM FSM
OCS-261	138° 3' 32.175" E	138.058937	4° 59' 28.194" N	4.991165	0.0634	200 NM FSM
OCS-262	138° 3' 35.920" E	138.059978	4° 59' 28.846" N	4.991346	0.1269	200 NM FSM
OCS-263	138° 3' 43.414" E	138.062059	4° 59' 30.155" N	4.99171	0.0719	200 NM FSM
OCS-264	138° 3' 47.661" E	138.063239	4° 59' 30.902" N	4.991917	0.0375	200 NM FSM
OCS-265	138° 3' 49.876" E	138.063854	4° 59' 31.294" N	4.992026	0.0920	200 NM FSM
OCS-266	138° 3' 55.306" E	138.065363	4° 59' 32.258" N	4.992294	0.0460	200 NM FSM
OCS-267	138° 3' 58.020" E	138.066117	4° 59' 32.742" N	4.992428	0.2029	200 NM FSM
OCS-268	138° 4' 9.991" E	138.069442	4° 59' 34.882" N	4.993023	0.0507	200 NM FSM
OCS-269	138° 4' 12.982" E	138.070273	4° 59' 35.419" N	4.993172	0.1014	200 NM FSM
OCS-270	138° 4' 18.965" E	138.071935	4° 59' 36.496" N	4.993471	0.0507	200 NM FSM
OCS-271	138° 4' 21.954" E	138.072765	4° 59' 37.037" N	4.993621	0.4265	200 NM FSM
OCS-272	138° 4' 47.109" E	138.079753	4° 59' 41.599" N	4.994889	0.0533	200 NM FSM
OCS-273	138° 4' 50.251" E	138.080625	4° 59' 42.171" N	4.995048	0.1066	200 NM FSM
OCS-274	138° 4' 56.535" E	138.082371	4° 59' 43.320" N	4.995367	0.0533	200 NM FSM
OCS-275	138° 4' 59.675" E	138.083243	4° 59' 43.896" N	4.995527	0.2132	200 NM FSM
OCS-276	138° 5' 12.243" E	138.086734	4° 59' 46.210" N	4.996169	0.0533	200 NM FSM
OCS-277	138° 5' 15.382" E	138.087606	4° 59' 46.790" N	4.99633	0.1065	200 NM FSM

OCS-278	138° 5' 21.661" E	138.08935	4° 59' 47.954" N	4.996654	0.0532	200 NM FSM
OCS-279	138° 5' 24.796" E	138.090221	4° 59' 48.538" N	4.996816	0.8757	200 NM FSM
OCS-280	138° 6' 16.392" E	138.104553	4° 59' 58.178" N	4.999494	0.1094	200 NM FSM
OCS-281	138° 6' 22.834" E	138.106343	4° 59' 59.391" N	4.999831	0.2188	200 NM FSM
OCS-282	138° 6' 35.722" E	138.109923	5° 0' 1.835" N	5.00051	0.1094	200 NM FSM
OCS-283	138° 6' 42.162" E	138.111712	5° 0' 3.065" N	5.000852	0.4378	200 NM FSM
OCS-284	138° 7' 7.931" E	138.11887	5° 0' 8.025" N	5.002229	0.1094	200 NM FSM
OCS-285	138° 7' 14.367" E	138.120658	5° 0' 9.273" N	5.002576	0.2188	200 NM FSM
OCS-286	138° 7' 27.241" E	138.124234	5° 0' 11.787" N	5.003274	0.1094	200 NM FSM
OCS-287	138° 7' 33.673" E	138.12602	5° 0' 13.052" N	5.003626	0.8757	200 NM FSM
OCS-288	138° 8' 25.162" E	138.140323	5° 0' 23.253" N	5.006459	0.1094	200 NM FSM
OCS-289	138° 8' 31.592" E	138.142109	5° 0' 24.535" N	5.006815	0.2188	200 NM FSM
OCS-290	138° 8' 44.452" E	138.145681	5° 0' 27.119" N	5.007533	0.1094	200 NM FSM
OCS-291	138° 8' 50.878" E	138.147466	5° 0' 28.420" N	5.007894	0.4378	200 NM FSM
OCS-292	138° 9' 16.592" E	138.154609	5° 0' 33.659" N	5.00935	0.1094	200 NM FSM
OCS-293	138° 9' 23.015" E	138.156393	5° 0' 34.977" N	5.009716	0.2188	200 NM FSM
OCS-294	138° 9' 35.861" E	138.159961	5° 0' 37.631" N	5.010453	0.1094	200 NM FSM
OCS-295	138° 9' 42.279" E	138.161744	5° 0' 38.966" N	5.010824	0.8757	200 NM FSM
OCS-296	138° 10' 33.656" E	138.176015	5° 0' 49.725" N	5.013812	0.1094	200 NM FSM
OCS-297	138° 10' 40.070" E	138.177797	5° 0' 51.077" N	5.014188	0.2189	200 NM FSM
OCS-298	138° 10' 52.902" E	138.181362	5° 0' 53.801" N	5.014945	0.1094	200 NM FSM
OCS-299	138° 10' 59.315" E	138.183143	5° 0' 55.171" N	5.015325	0.4378	200 NM FSM
OCS-300	138° 11' 24.970" E	138.19027	5° 1' 0.689" N	5.016858	0.1094	200 NM FSM
OCS-301	138° 11' 31.379" E	138.19205	5° 1' 2.077" N	5.017244	0.2188	200 NM FSM
OCS-302	138° 11' 44.196" E	138.19561	5° 1' 4.870" N	5.01802	0.1094	200 NM FSM
OCS-303	138° 11' 50.598" E	138.197388	5° 1' 6.275" N	5.01841	0.8757	200 NM FSM
OCS-304	138° 12' 41.856" E	138.211627	5° 1' 17.592" N	5.021553	0.1094	200 NM FSM
OCS-305	138° 12' 48.256" E	138.213404	5° 1' 19.014" N	5.021948	0.2189	200 NM FSM
OCS-306	138° 13' 1.058" E	138.216961	5° 1' 21.877" N	5.022743	0.1094	200 NM FSM
OCS-307	138° 13' 7.455" E	138.218738	5° 1' 23.316" N	5.023143	0.4378	200 NM FSM
OCS-308	138° 13' 33.050" E	138.225847	5° 1' 29.113" N	5.024754	0.1094	200 NM FSM
OCS-309	138° 13' 39.444" E	138.227623	5° 1' 30.570" N	5.025158	0.2189	200 NM FSM
OCS-310	138° 13' 52.230" E	138.231175	5° 1' 33.503" N	5.025973	0.1094	200 NM FSM
OCS-311	138° 13' 58.618" E	138.232949	5° 1' 34.977" N	5.026382	0.8757	200 NM FSM
OCS-312	138° 14' 49.751" E	138.247153	5° 1' 46.850" N	5.029681	0.1094	200 NM FSM
OCS-313	138° 14' 56.135" E	138.248926	5° 1' 48.341" N	5.030095	0.2188	200 NM FSM
OCS-314	138° 15' 8.905" E	138.252474	5° 1' 51.343" N	5.030929	0.1094	200 NM FSM
OCS-315	138° 15' 15.286" E	138.254246	5° 1' 52.852" N	5.031348	0.4378	200 NM FSM
OCS-316	138° 15' 40.818" E	138.261338	5° 1' 58.927" N	5.033035	0.1094	200 NM FSM
OCS-317	138° 15' 47.195" E	138.26311	5° 2' 0.453" N	5.033459	0.2189	200 NM FSM
OCS-318	138° 15' 59.949" E	138.266652	5° 2' 3.525" N	5.034312	0.1094	200 NM FSM
OCS-319	138° 16' 6.320" E	138.268422	5° 2' 5.068" N	5.034741	0.8757	200 NM FSM
OCS-320	138° 16' 57.323" E	138.28259	5° 2' 17.496" N	5.038193	0.1094	200 NM FSM
OCS-321	138° 17' 3.690" E	138.284358	5° 2' 19.057" N	5.038627	0.2188	200 NM FSM
OCS-322	138° 17' 16.427" E	138.287896	5° 2' 22.197" N	5.039499	0.1094	200 NM FSM
OCS-323	138° 17' 22.792" E	138.289664	5° 2' 23.775" N	5.039938	0.4378	200 NM FSM
OCS-324	138° 17' 48.256" E	138.296738	5° 2' 30.127" N	5.041702	0.1094	200 NM FSM
OCS-325	138° 17' 54.617" E	138.298505	5° 2' 31.723" N	5.042145	0.2189	200 NM FSM

OCS-326	138° 18' 7.337" E	138.302038	5° 2' 34.932" N	5.043037	0.1094	200 NM FSM
OCS-327	138° 18' 13.691" E	138.303803	5° 2' 36.545" N	5.043485	0.8758	200 NM FSM
OCS-328	138° 19' 4.557" E	138.317933	5° 2' 49.526" N	5.047091	0.1094	200 NM FSM
OCS-329	138° 19' 10.908" E	138.319697	5° 2' 51.156" N	5.047543	0.2189	200 NM FSM
OCS-330	138° 19' 23.611" E	138.323225	5° 2' 54.435" N	5.048454	0.1094	200 NM FSM
OCS-331	138° 19' 29.958" E	138.324988	5° 2' 56.082" N	5.048912	0.4378	200 NM FSM
OCS-332	138° 19' 55.353" E	138.332042	5° 3' 2.710" N	5.050753	0.1094	200 NM FSM
OCS-333	138° 20' 1.696" E	138.333804	5° 3' 4.375" N	5.051215	0.2189	200 NM FSM
OCS-334	138° 20' 14.381" E	138.337328	5° 3' 7.723" N	5.052145	0.1094	200 NM FSM
OCS-335	138° 20' 20.718" E	138.339088	5° 3' 9.404" N	5.052612	0.8758	200 NM FSM
OCS-336	138° 21' 11.441" E	138.353178	5° 3' 22.938" N	5.056372	0.1094	200 NM FSM
OCS-337	138° 21' 17.773" E	138.354937	5° 3' 24.636" N	5.056843	0.2189	200 NM FSM
OCS-338	138° 21' 30.440" E	138.358456	5° 3' 28.053" N	5.057792	0.1094	200 NM FSM
OCS-339	138° 21' 36.770" E	138.360214	5° 3' 29.769" N	5.058269	0.4378	200 NM FSM
OCS-340	138° 22' 2.092" E	138.367248	5° 3' 36.673" N	5.060187	0.1094	200 NM FSM
OCS-341	138° 22' 8.416" E	138.369005	5° 3' 38.406" N	5.060668	0.2189	200 NM FSM
OCS-342	138° 22' 21.064" E	138.372518	5° 3' 41.891" N	5.061637	0.1094	200 NM FSM
OCS-343	138° 22' 27.383" E	138.374273	5° 3' 43.642" N	5.062123	0.8758	200 NM FSM
OCS-344	138° 23' 17.958" E	138.388322	5° 3' 57.725" N	5.066035	0.1094	200 NM FSM
OCS-345	138° 23' 24.272" E	138.390075	5° 3' 59.493" N	5.066526	0.2189	200 NM FSM
OCS-346	138° 23' 36.901" E	138.393584	5° 4' 3.047" N	5.067513	0.1094	200 NM FSM
OCS-347	138° 23' 43.211" E	138.395336	5° 4' 4.832" N	5.068009	0.4378	200 NM FSM
OCS-348	138° 24' 8.457" E	138.402349	5° 4' 12.010" N	5.070003	0.1094	200 NM FSM
OCS-349	138° 24' 14.764" E	138.404101	5° 4' 13.812" N	5.070503	0.2189	200 NM FSM
OCS-350	138° 24' 27.373" E	138.407604	5° 4' 17.435" N	5.07151	0.1094	200 NM FSM
OCS-351	138° 24' 33.672" E	138.409353	5° 4' 19.253" N	5.072015	0.8758	200 NM FSM
OCS-352	138° 25' 24.093" E	138.423359	5° 4' 33.886" N	5.076079	0.1094	200 NM FSM
OCS-353	138° 25' 30.387" E	138.425107	5° 4' 35.722" N	5.076589	0.2189	200 NM FSM
OCS-354	138° 25' 42.977" E	138.428605	5° 4' 39.412" N	5.077615	0.1094	200 NM FSM
OCS-355	138° 25' 49.269" E	138.430352	5° 4' 41.266" N	5.078129	0.4379	200 NM FSM
OCS-356	138° 26' 14.436" E	138.437343	5° 4' 48.718" N	5.080199	0.1094	200 NM FSM
OCS-357	138° 26' 20.722" E	138.439089	5° 4' 50.589" N	5.080719	0.2189	200 NM FSM
OCS-358	138° 26' 33.292" E	138.442581	5° 4' 54.348" N	5.081763	0.1094	200 NM FSM
OCS-359	138° 26' 39.571" E	138.444325	5° 4' 56.235" N	5.082288	0.8758	200 NM FSM
OCS-360	138° 27' 29.832" E	138.458287	5° 5' 11.414" N	5.086504	0.1094	200 NM FSM
OCS-361	138° 27' 36.106" E	138.460029	5° 5' 13.319" N	5.087033	0.0802	200 NM FSM
OCS-362	138° 27' 40.704" E	138.461307	5° 5' 14.721" N	5.087422	1.1124	350 NM RI
OCS-363	138° 28' 27.926" E	138.474424	5° 4' 27.530" N	5.074314	3.8260	350 NM RI
OCS-364	138° 31' 8.566" E	138.519046	5° 1' 43.438" N	5.028733	3.8258	350 NM RI
OCS-365	138° 33' 47.397" E	138.563166	4° 58' 57.598" N	4.982666	3.8255	350 NM RI
OCS-366	138° 36' 24.403" E	138.606779	4° 56' 10.028" N	4.936119	3.8252	350 NM RI
OCS-367	138° 38' 59.565" E	138.649879	4° 53' 20.749" N	4.889097	3.8250	350 NM RI
OCS-368	138° 41' 32.864" E	138.692462	4° 50' 29.781" N	4.841606	3.8247	350 NM RI
OCS-369	138° 44' 4.284" E	138.734523	4° 47' 37.145" N	4.793651	3.8244	350 NM RI
OCS-370	138° 46' 33.806" E	138.776057	4° 44' 42.861" N	4.745239	3.8242	350 NM RI
OCS-371	138° 49' 1.413" E	138.817059	4° 41' 46.951" N	4.696375	3.5998	350 NM RI
OCS-372	138° 51' 18.606" E	138.855168	4° 38' 59.880" N	4.649967	3.5996	350 NM RI
OCS-373	138° 53' 34.073" E	138.892798	4° 36' 11.405" N	4.603168	3.5994	350 NM RI

OCS-374	138° 55' 47.801" E	138.929945	4° 33' 21.543" N	4.555984	3.5991	350 NM RI
OCS-375	138° 57' 59.775" E	138.966604	4° 30' 30.311" N	4.50842	3.5989	350 NM RI
OCS-376	139° 0' 9.981" E	139.002773	4° 27' 37.729" N	4.46048	3.5987	350 NM RI
OCS-377	139° 2' 18.408" E	139.038447	4° 24' 43.814" N	4.412171	3.5984	350 NM RI
OCS-378	139° 4' 25.041" E	139.073622	4° 21' 48.586" N	4.363496	3.5982	350 NM RI
OCS-379	139° 6' 29.868" E	139.108297	4° 18' 52.062" N	4.314462	1.3470	350 NM RI
OCS-380	139° 7' 16.266" E	139.121185	4° 17' 45.742" N	4.29604	3.6614	350 NM RI
OCS-381	139° 10' 53.306" E	139.181474	4° 17' 13.235" N	4.28701	23.7684	350 NM RI
OCS-382	139° 34' 22.275" E	139.572854	4° 13' 42.471" N	4.228464	2.3706	350 NM RI
OCS-383	139° 36' 42.733" E	139.61187	4° 13' 20.985" N	4.222496	2.3706	350 NM RI
OCS-384	139° 39' 3.042" E	139.650845	4° 12' 58.543" N	4.216262	2.3706	350 NM RI
OCS-385	139° 41' 23.195" E	139.689776	4° 12' 35.147" N	4.209763	2.3706	350 NM RI
OCS-386	139° 43' 43.185" E	139.728663	4° 12' 10.796" N	4.202999	3.8214	350 NM RI
OCS-387	139° 47' 28.501" E	139.79125	4° 11' 29.537" N	4.191538	3.8214	350 NM RI
OCS-388	139° 51' 13.351" E	139.853709	4° 10' 45.807" N	4.179391	3.8213	350 NM RI
OCS-389	139° 54' 57.708" E	139.91603	4° 9' 59.612" N	4.166559	3.8213	350 NM RI
OCS-390	139° 58' 41.545" E	139.978207	4° 9' 10.958" N	4.153044	3.8212	350 NM RI
OCS-391	140° 2' 24.835" E	140.040232	4° 8' 19.850" N	4.138847	3.8211	350 NM RI
OCS-392	140° 6' 7.551" E	140.102098	4° 7' 26.295" N	4.123971	3.8211	350 NM RI
OCS-393	140° 9' 49.667" E	140.163796	4° 6' 30.299" N	4.108417	3.8210	350 NM RI
OCS-394	140° 13' 31.156" E	140.225321	4° 5' 31.869" N	4.092186	3.8209	350 NM RI
OCS-395	140° 17' 11.991" E	140.286664	4° 4' 31.013" N	4.075281	3.8208	350 NM RI
OCS-396	140° 20' 52.146" E	140.347818	4° 3' 27.736" N	4.057705	3.8207	350 NM RI
OCS-397	140° 24' 31.594" E	140.408776	4° 2' 22.048" N	4.039458	3.8207	350 NM RI
OCS-398	140° 28' 10.310" E	140.46953	4° 1' 13.956" N	4.020543	3.8206	350 NM RI
OCS-399	140° 31' 48.266" E	140.530074	4° 0' 3.468" N	4.000963	3.8205	350 NM RI
OCS-400	140° 35' 25.438" E	140.590399	3° 58' 50.593" N	3.98072	3.8204	350 NM RI
OCS-401	140° 39' 1.798" E	140.6505	3° 57' 35.340" N	3.959817	3.8203	350 NM RI
OCS-402	140° 42' 37.322" E	140.710367	3° 56' 17.718" N	3.938255	2.8014	350 NM RI
OCS-403	140° 45' 14.819" E	140.754116	3° 55' 19.297" N	3.922027	2.8013	350 NM RI
OCS-404	140° 47' 51.842" E	140.797734	3° 54' 19.611" N	3.905448	2.8013	350 NM RI
OCS-405	140° 50' 28.381" E	140.841217	3° 53' 18.664" N	3.888518	2.8012	350 NM RI
OCS-406	140° 53' 4.426" E	140.884563	3° 52' 16.460" N	3.871239	2.8011	350 NM RI
OCS-407	140° 55' 39.966" E	140.927768	3° 51' 13.002" N	3.853612	2.8011	350 NM RI
OCS-408	140° 58' 14.993" E	140.970831	3° 50' 8.296" N	3.835638	2.8010	350 NM RI
OCS-409	141° 0' 49.495" E	141.013749	3° 49' 2.344" N	3.817318	2.8010	350 NM RI
OCS-410	141° 3' 23.464" E	141.056518	3° 47' 55.152" N	3.798653	2.8009	350 NM RI
OCS-411	141° 5' 56.888" E	141.099136	3° 46' 46.724" N	3.779646	2.8008	350 NM RI
OCS-412	141° 8' 29.759" E	141.1416	3° 45' 37.064" N	3.760296	2.8008	350 NM RI
OCS-413	141° 11' 2.067" E	141.183907	3° 44' 26.177" N	3.740605	2.8007	350 NM RI
OCS-414	141° 13' 33.801" E	141.226056	3° 43' 14.067" N	3.720574	2.8006	350 NM RI
OCS-415	141° 16' 4.952" E	141.268042	3° 42' 0.739" N	3.700205	2.8006	350 NM RI
OCS-416	141° 18' 35.511" E	141.309864	3° 40' 46.198" N	3.6795	2.8005	350 NM RI
OCS-417	141° 21' 5.468" E	141.351519	3° 39' 30.449" N	3.658458	2.8005	350 NM RI
OCS-418	141° 23' 34.812" E	141.393003	3° 38' 13.497" N	3.637082	24.1766	350 NM RI
OCS-419	141° 45' 1.574" E	141.750437	3° 27' 4.117" N	3.451144	24.1719	350 NM RI
OCS-420	142° 6' 28.315" E	142.107865	3° 15' 55.180" N	3.265328	9.8821	350 NM RI
OCS-421	142° 15' 14.463" E	142.254018	3° 11' 21.846" N	3.189402	0.9885	350 NM RI

OCS-422	142° 16' 11.311" E	142.269809	3° 11' 5.075" N	3.184743	2.1255	350 NM RI
OCS-423	142° 18' 13.323" E	142.303701	3° 10' 28.270" N	3.174519	2.1255	350 NM RI
OCS-424	142° 20' 15.109" E	142.33753	3° 9' 50.720" N	3.164089	2.1254	350 NM RI
OCS-425	142° 22' 16.665" E	142.371296	3° 9' 12.427" N	3.153452	2.1254	350 NM RI
OCS-426	142° 24' 17.986" E	142.404996	3° 8' 33.393" N	3.142609	2.1254	350 NM RI
OCS-427	142° 26' 19.068" E	142.43863	3° 7' 53.618" N	3.131561	2.1254	350 NM RI
OCS-428	142° 28' 19.905" E	142.472196	3° 7' 13.105" N	3.120307	1.3217	350 NM RI
OCS-429	142° 29' 34.895" E	142.493026	3° 6' 47.453" N	3.113181	0.8037	350 NM RI
OCS-430	142° 30' 20.495" E	142.505693	3° 6' 31.855" N	3.108849	2.1253	350 NM RI
OCS-431	142° 32' 20.831" E	142.53912	3° 5' 49.869" N	3.097186	2.1253	350 NM RI
OCS-432	142° 34' 20.910" E	142.572475	3° 5' 7.149" N	3.085319	2.1253	350 NM RI
OCS-433	142° 36' 20.728" E	142.605758	3° 4' 23.697" N	3.073249	2.2781	350 NM RI
OCS-434	142° 38' 28.867" E	142.641352	3° 3' 36.308" N	3.060086	2.2781	350 NM RI
OCS-435	142° 40' 36.696" E	142.67686	3° 2' 48.082" N	3.046689	2.2781	350 NM RI
OCS-436	142° 42' 44.207" E	142.71228	3° 1' 59.020" N	3.033061	2.2780	350 NM RI
OCS-437	142° 44' 51.397" E	142.74761	3° 1' 9.125" N	3.019201	2.2780	350 NM RI
OCS-438	142° 46' 58.259" E	142.78285	3° 0' 18.398" N	3.005111	2.2780	350 NM RI
OCS-439	142° 49' 4.789" E	142.817997	2° 59' 26.842" N	2.99079	2.2779	350 NM RI
OCS-440	142° 51' 10.980" E	142.85305	2° 58' 34.460" N	2.976239	2.2779	350 NM RI
OCS-441	142° 53' 16.828" E	142.888008	2° 57' 41.253" N	2.961459	25.1211	350 NM RI
OCS-442	143° 16' 22.913" E	143.273031	2° 47' 50.173" N	2.79727	2.6835	350 NM RI
OCS-443	143° 18' 50.748" E	143.314097	2° 46' 46.488" N	2.77958	2.6834	350 NM RI
OCS-444	143° 21' 18.092" E	143.355026	2° 45' 41.666" N	2.761574	2.6834	350 NM RI
OCS-445	143° 23' 44.935" E	143.395815	2° 44' 35.710" N	2.743253	2.6834	350 NM RI
OCS-446	143° 26' 11.268" E	143.436463	2° 43' 28.623" N	2.724618	2.6833	350 NM RI
OCS-447	143° 28' 37.083" E	143.476968	2° 42' 20.411" N	2.70567	2.6833	350 NM RI
OCS-448	143° 31' 2.372" E	143.517326	2° 41' 11.077" N	2.68641	2.6832	350 NM RI
OCS-449	143° 33' 27.126" E	143.557535	2° 40' 0.625" N	2.66684	2.6832	350 NM RI
OCS-450	143° 35' 51.337" E	143.597594	2° 38' 49.059" N	2.646961	2.6832	350 NM RI
OCS-451	143° 38' 14.995" E	143.637499	2° 37' 36.384" N	2.626773	2.6831	350 NM RI
OCS-452	143° 40' 38.094" E	143.677248	2° 36' 22.605" N	2.606279	2.6831	350 NM RI
OCS-453	143° 43' 0.623" E	143.71684	2° 35' 7.724" N	2.585479	2.6830	350 NM RI
OCS-454	143° 45' 22.576" E	143.756271	2° 33' 51.747" N	2.564374	2.6830	350 NM RI
OCS-455	143° 47' 43.943" E	143.79554	2° 32' 34.679" N	2.542966	2.6829	350 NM RI
OCS-456	143° 50' 4.716" E	143.834643	2° 31' 16.523" N	2.521257	2.6829	350 NM RI
OCS-457	143° 52' 24.888" E	143.87358	2° 29' 57.286" N	2.499246	2.6828	350 NM RI
OCS-458	143° 54' 44.450" E	143.912347	2° 28' 36.970" N	2.476936	3.8148	350 NM RI
OCS-459	143° 58' 1.832" E	143.967176	2° 26' 40.919" N	2.4447	3.8147	350 NM RI
OCS-460	144° 1' 17.941" E	144.02165	2° 24' 42.713" N	2.411865	3.8146	350 NM RI
OCS-461	144° 4' 32.754" E	144.075765	2° 22' 42.365" N	2.378435	3.2142	350 NM RI
OCS-462	144° 7' 15.799" E	144.121055	2° 20' 59.164" N	2.349768	17.2770	200 NM PNG
OCS-463	143° 50' 52.770" E	143.847992	2° 15' 31.880" N	2.258856	0.7465	200 NM PNG
OCS-464	143° 50' 10.814" E	143.836337	2° 15' 16.243" N	2.254512	0.9071	200 NM PNG
OCS-465	143° 49' 25.523" E	143.823756	2° 14' 45.993" N	2.246109	0.1215	200 NM PNG
OCS-466	143° 49' 19.457" E	143.822071	2° 14' 41.942" N	2.244984	0.9292	200 NM PNG
OCS-467	143° 48' 33.063" E	143.809184	2° 14' 10.955" N	2.236376	3.3575	200 NM PNG
OCS-468	143° 45' 45.419" E	143.762616	2° 12' 18.985" N	2.205274	1.4937	200 NM PNG
OCS-469	143° 44' 30.838" E	143.7419	2° 11' 29.172" N	2.191437	0.0523	200 NM PNG

OCS-470	143° 44' 27.757" E	143.741044	2° 11' 28.596" N	2.191277	17.5167	200 NM PNG
OCS-471	143° 27' 15.571" E	143.454325	2° 8' 15.740" N	2.137706	21.0277	200 NM PNG
OCS-472	143° 7' 45.820" E	143.129394	2° 0' 23.907" N	2.006641	1.3724	200 NM PNG
OCS-473	143° 6' 29.476" E	143.108188	1° 59' 53.113" N	1.998087	4.2896	200 NM PNG
OCS-474	143° 2' 15.147" E	143.037541	1° 59' 15.318" N	1.987588	0.0008	200 NM PNG
OCS-475	143° 2' 15.099" E	143.037528	1° 59' 15.311" N	1.987586	8.5347	200 NM PNG
OCS-476	142° 53' 49.077" E	142.896966	1° 58' 0.113" N	1.966698	5.4630	200 NM PNG
OCS-477	142° 48' 30.621" E	142.808506	1° 56' 43.571" N	1.945436	3.2244	200 NM PNG
OCS-478	142° 45' 22.662" E	142.756295	1° 55' 58.394" N	1.932887	5.1921	200 NM PNG
OCS-479	142° 40' 20.000" E	142.672222	1° 54' 45.648" N	1.91268	15.5447	200 NM PNG
OCS-480	142° 25' 46.064" E	142.429462	1° 49' 20.844" N	1.822457	12.6046	200 NM PNG
OCS-481	142° 13' 21.701" E	142.222695	1° 47' 11.146" N	1.786429	20.5839	200 NM PNG
OCS-482	141° 53' 40.308" E	141.89453	1° 41' 13.604" N	1.687112	18.8604	200 NM PNG
OCS-483	141° 36' 24.543" E	141.606818	1° 33' 38.051" N	1.56057	3.0996	200 NM PNG
OCS-484	141° 33' 41.970" E	141.561658	1° 32' 7.591" N	1.535442	6.1328	200 NM PNG
OCS-485	141° 28' 20.304" E	141.472307	1° 29' 8.608" N	1.485725	5.2690	200 NM PNG
OCS-486	141° 23' 43.938" E	141.395538	1° 26' 34.832" N	1.443009	11.1183	200 NM PNG
OCS-487	141° 14' 1.390" E	141.233719	1° 21' 9.214" N	1.35256	4.9033	200 NM PNG
OCS-488	141° 10' 0.371" E	141.16677	1° 18' 19.994" N	1.305554	9.2514	200 NM PNG
OCS-489	141° 2' 25.618" E	141.040449	1° 13' 0.702" N	1.216862	11.6615	200 NM PNG
OCS-490	140° 52' 20.069" E	140.872242	1° 7' 9.435" N	1.119288	2.6152	200 NM PNG
OCS-491	140° 50' 4.267" E	140.834518	1° 5' 50.658" N	1.097405	1.8849	200 NM PNG
OCS-492	140° 48' 26.387" E	140.80733	1° 4' 53.880" N	1.081633	0.8718	200 NM RI
OCS-493	140° 48' 24.111" E	140.806698	1° 5' 46.423" N	1.096229	0.9676	200 NM RI
OCS-494	140° 48' 21.586" E	140.805996	1° 6' 44.738" N	1.112427	38.0251	200 NM RI
OCS-495	140° 14' 36.444" E	140.243457	1° 24' 16.773" N	1.404659	0.0689	200 NM RI
OCS-496	140° 14' 32.774" E	140.242437	1° 24' 18.675" N	1.405188	0.1487	200 NM RI
OCS-497	140° 14' 24.847" E	140.240235	1° 24' 22.774" N	1.406326	0.0743	200 NM RI
OCS-498	140° 14' 20.883" E	140.239134	1° 24' 24.820" N	1.406894	0.3096	200 NM RI
OCS-499	140° 14' 4.363" E	140.234545	1° 24' 33.324" N	1.409257	0.0774	200 NM RI
OCS-500	140° 14' 0.233" E	140.233398	1° 24' 35.445" N	1.409846	0.1548	200 NM RI
OCS-501	140° 13' 51.967" E	140.231102	1° 24' 39.679" N	1.411022	0.0773	200 NM RI
OCS-502	140° 13' 47.835" E	140.229954	1° 24' 41.791" N	1.411609	0.6326	200 NM RI
OCS-503	140° 13' 14.014" E	140.220559	1° 24' 59.036" N	1.416399	0.0790	200 NM RI
OCS-504	140° 13' 9.788" E	140.219385	1° 25' 1.185" N	1.416996	0.1581	200 NM RI
OCS-505	140° 13' 1.328" E	140.217036	1° 25' 5.477" N	1.418188	0.0790	200 NM RI
OCS-506	140° 12' 57.098" E	140.215861	1° 25' 7.618" N	1.418783	0.3162	200 NM RI
OCS-507	140° 12' 40.158" E	140.211155	1° 25' 16.171" N	1.421159	0.0790	200 NM RI
OCS-508	140° 12' 35.924" E	140.209979	1° 25' 18.303" N	1.421751	0.1580	200 NM RI
OCS-509	140° 12' 27.450" E	140.207625	1° 25' 22.560" N	1.422933	0.0789	200 NM RI
OCS-510	140° 12' 23.216" E	140.206449	1° 25' 24.682" N	1.423523	1.2798	200 NM RI
OCS-511	140° 11' 14.520" E	140.187367	1° 25' 59.024" N	1.433062	0.1598	200 NM RI
OCS-512	140° 11' 5.933" E	140.184981	1° 26' 3.295" N	1.434249	0.3198	200 NM RI
OCS-513	140° 10' 48.731" E	140.180203	1° 26' 11.809" N	1.436613	0.1599	200 NM RI
OCS-514	140° 10' 40.124" E	140.177812	1° 26' 16.047" N	1.437791	0.6398	200 NM RI
OCS-515	140° 10' 5.644" E	140.168234	1° 26' 32.939" N	1.442483	0.1599	200 NM RI
OCS-516	140° 9' 57.020" E	140.165839	1° 26' 37.142" N	1.443651	0.3198	200 NM RI
OCS-517	140° 9' 39.752" E	140.161042	1° 26' 45.517" N	1.445977	0.1598	200 NM RI

OCS-518	140° 9' 31.113" E	140.158643	1° 26' 49.684" N	1.447135	1.2798	200 NM RI
OCS-519	140° 8' 21.880" E	140.139411	1° 27' 22.916" N	1.456366	0.1598	200 NM RI
OCS-520	140° 8' 13.225" E	140.137007	1° 27' 27.049" N	1.457514	0.3198	200 NM RI
OCS-521	140° 7' 55.890" E	140.132192	1° 27' 35.284" N	1.459801	0.1599	200 NM RI
OCS-522	140° 7' 47.218" E	140.129783	1° 27' 39.383" N	1.46094	0.6399	200 NM RI
OCS-523	140° 7' 12.473" E	140.120131	1° 27' 55.718" N	1.465477	0.1599	200 NM RI
OCS-524	140° 7' 3.784" E	140.117718	1° 27' 59.782" N	1.466606	0.3198	200 NM RI
OCS-525	140° 6' 46.384" E	140.112884	1° 28' 7.878" N	1.468855	0.3785	200 NM RI
OCS-526	140° 6' 25.749" E	140.107153	1° 28' 17.359" N	1.471489	0.4146	200 NM RI
OCS-527	140° 6' 3.094" E	140.10086	1° 28' 27.639" N	1.474344	0.5496	200 NM RI
OCS-528	140° 5' 33.172" E	140.092548	1° 28' 41.503" N	1.478195	0.1996	200 NM RI
OCS-529	140° 5' 22.295" E	140.089526	1° 28' 46.510" N	1.479586	0.3198	200 NM RI
OCS-530	140° 5' 4.843" E	140.084679	1° 28' 54.490" N	1.481803	0.2568	200 NM RI
OCS-531	140° 4' 50.811" E	140.080781	1° 29' 0.851" N	1.48357	0.4786	200 NM RI
OCS-532	140° 4' 24.623" E	140.073506	1° 29' 12.623" N	1.48684	0.3991	200 NM RI
OCS-533	140° 4' 2.734" E	140.067426	1° 29' 22.330" N	1.489536	0.1613	200 NM RI
OCS-534	140° 3' 53.871" E	140.064964	1° 29' 26.207" N	1.490613	0.0801	200 NM RI
OCS-535	140° 3' 49.469" E	140.063741	1° 29' 28.128" N	1.491147	0.3198	200 NM RI
OCS-536	140° 3' 31.875" E	140.058854	1° 29' 35.783" N	1.493273	0.1068	200 NM RI
OCS-537	140° 3' 25.996" E	140.057221	1° 29' 38.327" N	1.49398	0.6031	200 NM RI
OCS-538	140° 2' 53.028" E	140.048063	1° 29' 53.236" N	1.498121	0.5308	200 NM RI
OCS-539	140° 2' 23.924" E	140.039979	1° 30' 6.164" N	1.501712	0.3198	200 NM RI
OCS-540	140° 2' 6.336" E	140.035093	1° 30' 13.837" N	1.503844	0.1599	200 NM RI
OCS-541	140° 1' 57.537" E	140.032649	1° 30' 17.655" N	1.504904	0.6399	200 NM RI
OCS-542	140° 1' 22.290" E	140.022858	1° 30' 32.864" N	1.509129	0.1599	200 NM RI
OCS-543	140° 1' 13.476" E	140.02041	1° 30' 36.646" N	1.510179	0.3199	200 NM RI
OCS-544	140° 0' 55.827" E	140.015508	1° 30' 44.177" N	1.512271	0.1598	200 NM RI
OCS-545	140° 0' 47.000" E	140.013056	1° 30' 47.923" N	1.513312	1.2799	200 NM RI
OCS-546	139° 59' 36.260" E	139.993406	1° 31' 17.775" N	1.521604	0.1598	200 NM RI
OCS-547	139° 59' 27.418" E	139.99095	1° 31' 21.486" N	1.522635	0.3199	200 NM RI
OCS-548	139° 59' 9.710" E	139.986031	1° 31' 28.875" N	1.524687	0.1599	200 NM RI
OCS-549	139° 59' 0.852" E	139.98357	1° 31' 32.550" N	1.525708	0.6399	200 NM RI
OCS-550	139° 58' 25.368" E	139.973713	1° 31' 47.189" N	1.529775	0.1599	200 NM RI
OCS-551	139° 58' 16.495" E	139.971249	1° 31' 50.829" N	1.530786	0.3199	200 NM RI
OCS-552	139° 57' 58.728" E	139.966313	1° 31' 58.076" N	1.532799	0.1598	200 NM RI
OCS-553	139° 57' 49.843" E	139.963845	1° 32' 1.679" N	1.5338	1.2799	200 NM RI
OCS-554	139° 56' 38.637" E	139.944066	1° 32' 30.389" N	1.541775	0.1598	200 NM RI
OCS-555	139° 56' 29.738" E	139.941594	1° 32' 33.956" N	1.542766	0.3199	200 NM RI
OCS-556	139° 56' 11.914" E	139.936643	1° 32' 41.059" N	1.544739	0.1599	200 NM RI
OCS-557	139° 56' 2.998" E	139.934166	1° 32' 44.592" N	1.54572	0.6399	200 NM RI
OCS-558	139° 55' 27.286" E	139.924246	1° 32' 58.658" N	1.549627	0.1599	200 NM RI
OCS-559	139° 55' 18.356" E	139.921766	1° 33' 2.154" N	1.550598	0.3199	200 NM RI
OCS-560	139° 55' 0.477" E	139.916799	1° 33' 9.114" N	1.552532	0.1598	200 NM RI
OCS-561	139° 54' 51.535" E	139.914315	1° 33' 12.574" N	1.553493	1.2799	200 NM RI
OCS-562	139° 53' 39.881" E	139.894411	1° 33' 40.133" N	1.561148	0.0794	200 NM RI
OCS-563	139° 53' 35.434" E	139.893176	1° 33' 41.839" N	1.561622	0.1590	200 NM RI
OCS-564	139° 53' 26.526" E	139.890702	1° 33' 45.245" N	1.562568	0.0795	200 NM RI
OCS-565	139° 53' 22.072" E	139.889464	1° 33' 46.942" N	1.56304	0.3182	200 NM RI

OCS-566	139° 53' 4.233" E	139.884509	1° 33' 53.722" N	1.564923	0.0795	200 NM RI
OCS-567	139° 52' 59.775" E	139.883271	1° 33' 55.411" N	1.565392	0.1590	200 NM RI
OCS-568	139° 52' 50.852" E	139.880792	1° 33' 58.782" N	1.566328	0.0795	200 NM RI
OCS-569	139° 52' 46.390" E	139.879553	1° 34' 0.462" N	1.566795	0.6365	200 NM RI
OCS-570	139° 52' 10.650" E	139.869625	1° 34' 13.882" N	1.570523	0.0791	200 NM RI
OCS-571	139° 52' 6.209" E	139.868391	1° 34' 15.544" N	1.570985	0.1582	200 NM RI
OCS-572	139° 51' 57.319" E	139.865922	1° 34' 18.862" N	1.571906	0.0791	200 NM RI
OCS-573	139° 51' 52.874" E	139.864687	1° 34' 20.516" N	1.572366	0.3165	200 NM RI
OCS-574	139° 51' 35.076" E	139.859743	1° 34' 27.118" N	1.5742	0.0791	200 NM RI
OCS-575	139° 51' 30.626" E	139.858507	1° 34' 28.764" N	1.574657	0.1583	200 NM RI
OCS-576	139° 51' 21.720" E	139.856033	1° 34' 32.047" N	1.575569	0.0809	200 NM RI
OCS-577	139° 51' 17.167" E	139.854769	1° 34' 33.721" N	1.576034	0.0537	200 NM RI
OCS-578	139° 51' 14.145" E	139.853929	1° 34' 34.826" N	1.57634	0.1108	200 NM RI
OCS-579	139° 51' 7.900" E	139.852195	1° 34' 37.104" N	1.576973	0.0554	200 NM RI
OCS-580	139° 51' 4.777" E	139.851327	1° 34' 38.241" N	1.577289	0.2217	200 NM RI
OCS-581	139° 50' 52.281" E	139.847856	1° 34' 42.781" N	1.57855	0.0554	200 NM RI
OCS-582	139° 50' 49.157" E	139.846988	1° 34' 43.913" N	1.578865	0.1108	200 NM RI
OCS-583	139° 50' 42.907" E	139.845252	1° 34' 46.174" N	1.579493	0.0554	200 NM RI
OCS-584	139° 50' 39.783" E	139.844384	1° 34' 47.301" N	1.579806	0.4399	200 NM RI
OCS-585	139° 50' 14.962" E	139.83749	1° 34' 56.240" N	1.582289	0.0549	200 NM RI
OCS-586	139° 50' 11.862" E	139.836628	1° 34' 57.354" N	1.582598	0.1099	200 NM RI
OCS-587	139° 50' 5.658" E	139.834905	1° 34' 59.579" N	1.583216	0.0549	200 NM RI
OCS-588	139° 50' 2.555" E	139.834043	1° 35' 0.689" N	1.583525	0.2199	200 NM RI
OCS-589	139° 49' 50.136" E	139.830593	1° 35' 5.123" N	1.584756	0.0549	200 NM RI
OCS-590	139° 49' 47.032" E	139.829731	1° 35' 6.228" N	1.585063	0.1099	200 NM RI
OCS-591	139° 49' 40.823" E	139.828006	1° 35' 8.435" N	1.585676	0.0549	200 NM RI
OCS-592	139° 49' 37.721" E	139.827145	1° 35' 9.536" N	1.585982	0.8727	200 NM RI
OCS-593	139° 48' 48.378" E	139.813438	1° 35' 26.998" N	1.590833	0.1090	200 NM RI
OCS-594	139° 48' 42.212" E	139.811726	1° 35' 29.170" N	1.591436	0.2181	200 NM RI
OCS-595	139° 48' 29.870" E	139.808297	1° 35' 33.500" N	1.592639	0.1090	200 NM RI
OCS-596	139° 48' 23.698" E	139.806583	1° 35' 35.656" N	1.593238	0.4363	200 NM RI
OCS-597	139° 47' 58.982" E	139.799717	1° 35' 44.251" N	1.595625	0.1090	200 NM RI
OCS-598	139° 47' 52.803" E	139.798001	1° 35' 46.390" N	1.596219	0.2181	200 NM RI
OCS-599	139° 47' 40.437" E	139.794566	1° 35' 50.652" N	1.597403	0.1090	200 NM RI
OCS-600	139° 47' 34.255" E	139.792849	1° 35' 52.774" N	1.597993	0.8727	200 NM RI
OCS-601	139° 46' 44.725" E	139.77909	1° 36' 9.694" N	1.602693	0.1090	200 NM RI
OCS-602	139° 46' 38.536" E	139.777371	1° 36' 11.799" N	1.603277	0.2181	200 NM RI
OCS-603	139° 46' 26.147" E	139.77393	1° 36' 15.993" N	1.604442	0.1090	200 NM RI
OCS-604	139° 46' 19.952" E	139.772209	1° 36' 18.081" N	1.605022	0.4363	200 NM RI
OCS-605	139° 45' 55.145" E	139.765318	1° 36' 26.404" N	1.607334	0.1090	200 NM RI
OCS-606	139° 45' 48.944" E	139.763596	1° 36' 28.475" N	1.60791	0.2181	200 NM RI
OCS-607	139° 45' 36.532" E	139.760148	1° 36' 32.601" N	1.609056	0.1090	200 NM RI
OCS-608	139° 45' 30.327" E	139.758424	1° 36' 34.655" N	1.609626	0.8727	200 NM RI
OCS-609	139° 44' 40.616" E	139.744616	1° 36' 51.030" N	1.614175	0.1090	200 NM RI
OCS-610	139° 44' 34.406" E	139.74289	1° 36' 53.066" N	1.614741	0.2181	200 NM RI
OCS-611	139° 44' 21.972" E	139.739437	1° 36' 57.125" N	1.615868	0.1090	200 NM RI
OCS-612	139° 44' 15.753" E	139.737709	1° 36' 59.145" N	1.616429	0.4363	200 NM RI
OCS-613	139° 43' 50.857" E	139.730794	1° 37' 7.195" N	1.618665	0.1090	200 NM RI

OCS-614	139° 43' 44.633" E	139.729065	1° 37' 9.198" N	1.619222	0.2181	200 NM RI
OCS-615	139° 43' 32.177" E	139.725605	1° 37' 13.188" N	1.62033	0.1090	200 NM RI
OCS-616	139° 43' 25.950" E	139.723875	1° 37' 15.173" N	1.620881	0.8727	200 NM RI
OCS-617	139° 42' 36.065" E	139.710018	1° 37' 31.002" N	1.625278	0.1090	200 NM RI
OCS-618	139° 42' 29.833" E	139.708287	1° 37' 32.970" N	1.625825	0.2181	200 NM RI
OCS-619	139° 42' 17.355" E	139.704821	1° 37' 36.891" N	1.626914	0.1090	200 NM RI
OCS-620	139° 42' 11.115" E	139.703088	1° 37' 38.843" N	1.627456	0.4363	200 NM RI
OCS-621	139° 41' 46.133" E	139.696148	1° 37' 46.620" N	1.629617	0.1090	200 NM RI
OCS-622	139° 41' 39.888" E	139.694413	1° 37' 48.554" N	1.630154	0.2181	200 NM RI
OCS-623	139° 41' 27.390" E	139.690942	1° 37' 52.407" N	1.631224	0.1090	200 NM RI
OCS-624	139° 41' 21.142" E	139.689206	1° 37' 54.324" N	1.631757	0.8727	200 NM RI
OCS-625	139° 40' 31.088" E	139.675302	1° 38' 9.604" N	1.636001	0.1090	200 NM RI
OCS-626	139° 40' 24.835" E	139.673565	1° 38' 11.504" N	1.636529	0.2181	200 NM RI
OCS-627	139° 40' 12.316" E	139.670088	1° 38' 15.288" N	1.63758	0.1090	200 NM RI
OCS-628	139° 40' 6.055" E	139.668349	1° 38' 17.171" N	1.638103	0.4363	200 NM RI
OCS-629	139° 39' 40.990" E	139.661386	1° 38' 24.673" N	1.640187	0.1090	200 NM RI
OCS-630	139° 39' 34.725" E	139.659646	1° 38' 26.538" N	1.640705	0.2181	200 NM RI
OCS-631	139° 39' 22.186" E	139.656163	1° 38' 30.254" N	1.641737	0.1090	200 NM RI
OCS-632	139° 39' 15.916" E	139.654421	1° 38' 32.102" N	1.642251	0.8727	200 NM RI
OCS-633	139° 38' 25.700" E	139.640472	1° 38' 46.832" N	1.646342	0.1090	200 NM RI
OCS-634	139° 38' 19.426" E	139.63873	1° 38' 48.663" N	1.646851	0.2181	200 NM RI
OCS-635	139° 38' 6.867" E	139.635241	1° 38' 52.309" N	1.647864	0.1090	200 NM RI
OCS-636	139° 38' 0.587" E	139.633496	1° 38' 54.124" N	1.648368	0.4363	200 NM RI
OCS-637	139° 37' 35.442" E	139.626512	1° 39' 1.350" N	1.650375	0.1090	200 NM RI
OCS-638	139° 37' 29.156" E	139.624766	1° 39' 3.147" N	1.650874	0.2181	200 NM RI
OCS-639	139° 37' 16.577" E	139.621271	1° 39' 6.724" N	1.651868	0.1090	200 NM RI
OCS-640	139° 37' 10.289" E	139.619525	1° 39' 8.504" N	1.652362	0.8728	200 NM RI
OCS-641	139° 36' 19.915" E	139.605532	1° 39' 22.682" N	1.6563	0.1090	200 NM RI
OCS-642	139° 36' 13.622" E	139.603784	1° 39' 24.444" N	1.65679	0.2181	200 NM RI
OCS-643	139° 36' 1.024" E	139.600284	1° 39' 27.952" N	1.657764	0.1090	200 NM RI
OCS-644	139° 35' 54.724" E	139.598535	1° 39' 29.697" N	1.658249	0.4363	200 NM RI
OCS-645	139° 35' 29.502" E	139.591528	1° 39' 36.647" N	1.66018	0.1090	200 NM RI
OCS-646	139° 35' 23.197" E	139.589777	1° 39' 38.375" N	1.66066	0.2181	200 NM RI
OCS-647	139° 35' 10.580" E	139.586272	1° 39' 41.814" N	1.661615	0.1090	200 NM RI
OCS-648	139° 35' 4.273" E	139.58452	1° 39' 43.524" N	1.66209	0.8728	200 NM RI
OCS-649	139° 34' 13.748" E	139.570485	1° 39' 57.149" N	1.665875	0.1090	200 NM RI
OCS-650	139° 34' 7.435" E	139.568732	1° 39' 58.841" N	1.666345	0.2181	200 NM RI
OCS-651	139° 33' 54.800" E	139.565222	1° 40' 2.211" N	1.667281	0.1090	200 NM RI
OCS-652	139° 33' 48.482" E	139.563467	1° 40' 3.887" N	1.667746	0.4363	200 NM RI
OCS-653	139° 33' 23.186" E	139.556441	1° 40' 10.560" N	1.6696	0.1090	200 NM RI
OCS-654	139° 33' 16.863" E	139.554684	1° 40' 12.218" N	1.670061	0.2181	200 NM RI
OCS-655	139° 33' 4.209" E	139.551169	1° 40' 15.519" N	1.670978	0.1090	200 NM RI
OCS-656	139° 32' 57.884" E	139.549412	1° 40' 17.160" N	1.671433	0.8728	200 NM RI
OCS-657	139° 32' 7.214" E	139.535337	1° 40' 30.229" N	1.675063	0.1090	200 NM RI
OCS-658	139° 32' 0.884" E	139.533579	1° 40' 31.852" N	1.675514	0.2181	200 NM RI
OCS-659	139° 31' 48.213" E	139.530059	1° 40' 35.083" N	1.676412	0.1090	200 NM RI
OCS-660	139° 31' 41.876" E	139.528299	1° 40' 36.690" N	1.676858	0.4363	200 NM RI
OCS-661	139° 31' 16.509" E	139.521253	1° 40' 43.084" N	1.678634	0.1090	200 NM RI

OCS-662	139° 31' 10.169" E	139.519491	1° 40' 44.673" N	1.679076	0.2181	200 NM RI
OCS-663	139° 30' 57.480" E	139.515967	1° 40' 47.835" N	1.679954	0.1090	200 NM RI
OCS-664	139° 30' 51.137" E	139.514205	1° 40' 49.406" N	1.680391	0.8728	200 NM RI
OCS-665	139° 30' 0.329" E	139.500091	1° 41' 1.918" N	1.683866	0.1090	200 NM RI
OCS-666	139° 29' 53.982" E	139.498328	1° 41' 3.471" N	1.684298	0.2181	200 NM RI
OCS-667	139° 29' 41.276" E	139.494799	1° 41' 6.563" N	1.685156	0.1090	200 NM RI
OCS-668	139° 29' 34.923" E	139.493034	1° 41' 8.100" N	1.685583	0.4363	200 NM RI
OCS-669	139° 29' 9.488" E	139.485969	1° 41' 14.216" N	1.687282	0.1090	200 NM RI
OCS-670	139° 29' 3.131" E	139.484203	1° 41' 15.735" N	1.687704	0.2181	200 NM RI
OCS-671	139° 28' 50.409" E	139.480669	1° 41' 18.757" N	1.688544	0.1090	200 NM RI
OCS-672	139° 28' 44.049" E	139.478902	1° 41' 20.259" N	1.688961	0.8728	200 NM RI
OCS-673	139° 27' 53.107" E	139.464752	1° 41' 32.212" N	1.692281	0.1090	200 NM RI
OCS-674	139° 27' 46.743" E	139.462984	1° 41' 33.696" N	1.692693	0.2181	200 NM RI
OCS-675	139° 27' 34.005" E	139.459446	1° 41' 36.648" N	1.693513	0.1090	200 NM RI
OCS-676	139° 27' 27.636" E	139.457677	1° 41' 38.115" N	1.693921	0.4363	200 NM RI
OCS-677	139° 27' 2.136" E	139.450593	1° 41' 43.952" N	1.695542	0.1090	200 NM RI
OCS-678	139° 26' 55.763" E	139.448823	1° 41' 45.401" N	1.695945	0.2181	200 NM RI
OCS-679	139° 26' 43.008" E	139.44528	1° 41' 48.283" N	1.696745	0.1090	200 NM RI
OCS-680	139° 26' 36.632" E	139.443509	1° 41' 49.715" N	1.697143	0.8728	200 NM RI
OCS-681	139° 25' 45.564" E	139.429323	1° 42' 1.109" N	1.700308	0.1090	200 NM RI
OCS-682	139° 25' 39.184" E	139.427551	1° 42' 2.523" N	1.700701	0.2181	200 NM RI
OCS-683	139° 25' 26.414" E	139.424004	1° 42' 5.335" N	1.701482	0.1090	200 NM RI
OCS-684	139° 25' 20.029" E	139.42223	1° 42' 6.732" N	1.70187	0.4363	200 NM RI
OCS-685	139° 24' 54.468" E	139.41513	1° 42' 12.288" N	1.703413	0.1090	200 NM RI
OCS-686	139° 24' 48.079" E	139.413355	1° 42' 13.667" N	1.703796	0.2181	200 NM RI
OCS-687	139° 24' 35.294" E	139.409804	1° 42' 16.409" N	1.704558	0.1090	200 NM RI
OCS-688	139° 24' 28.903" E	139.408029	1° 42' 17.771" N	1.704936	0.8728	200 NM RI
OCS-689	139° 23' 37.714" E	139.393809	1° 42' 28.603" N	1.707945	0.1090	200 NM RI
OCS-690	139° 23' 31.320" E	139.392033	1° 42' 29.947" N	1.708319	0.2181	200 NM RI
OCS-691	139° 23' 18.521" E	139.388478	1° 42' 32.619" N	1.709061	0.1090	200 NM RI
OCS-692	139° 23' 12.121" E	139.3867	1° 42' 33.946" N	1.709429	0.4363	200 NM RI
OCS-693	139° 22' 46.500" E	139.379583	1° 42' 39.221" N	1.710895	0.1090	200 NM RI
OCS-694	139° 22' 40.097" E	139.377805	1° 42' 40.530" N	1.711258	0.2181	200 NM RI
OCS-695	139° 22' 27.283" E	139.374245	1° 42' 43.132" N	1.711981	0.1090	200 NM RI
OCS-696	139° 22' 20.878" E	139.372466	1° 42' 44.423" N	1.71234	0.8728	200 NM RI
OCS-697	139° 21' 29.575" E	139.358215	1° 42' 54.693" N	1.715192	0.1090	200 NM RI
OCS-698	139° 21' 23.166" E	139.356435	1° 42' 55.966" N	1.715546	0.2181	200 NM RI
OCS-699	139° 21' 10.338" E	139.352872	1° 42' 58.498" N	1.716249	0.1090	200 NM RI
OCS-700	139° 21' 3.925" E	139.35109	1° 42' 59.754" N	1.716598	0.4370	200 NM RI
OCS-701	139° 20' 38.101" E	139.343917	1° 43' 4.150" N	1.717819	0.1088	200 NM RI
OCS-702	139° 20' 31.705" E	139.34214	1° 43' 5.438" N	1.718177	0.2179	200 NM RI
OCS-703	139° 20' 18.903" E	139.338584	1° 43' 8.049" N	1.718903	0.1090	200 NM RI
OCS-704	139° 20' 12.504" E	139.336807	1° 43' 9.361" N	1.719267	0.1014	200 NM RI
OCS-705	139° 20' 6.546" E	139.335152	1° 43' 10.578" N	1.719605	0.7712	200 NM RI
OCS-706	139° 19' 21.156" E	139.322543	1° 43' 19.359" N	1.722044	0.0542	200 NM RI
OCS-707	139° 19' 17.963" E	139.321656	1° 43' 19.967" N	1.722213	0.1086	200 NM RI
OCS-708	139° 19' 11.564" E	139.319879	1° 43' 21.153" N	1.722542	0.0543	200 NM RI
OCS-709	139° 19' 8.364" E	139.31899	1° 43' 21.744" N	1.722707	0.2175	200 NM RI

OCS-710	139° 18' 55.540" E	139.315428	1° 43' 24.111" N	1.723364	0.0540	200 NM RI
OCS-711	139° 18' 52.353" E	139.314543	1° 43' 24.671" N	1.72352	0.1086	200 NM RI
OCS-712	139° 18' 45.942" E	139.312762	1° 43' 25.795" N	1.723832	0.0543	200 NM RI
OCS-713	139° 18' 42.737" E	139.311872	1° 43' 26.356" N	1.723988	0.4346	200 NM RI
OCS-714	139° 18' 17.073" E	139.304743	1° 43' 30.838" N	1.725233	0.0541	200 NM RI
OCS-715	139° 18' 13.880" E	139.303855	1° 43' 31.395" N	1.725387	0.1082	200 NM RI
OCS-716	139° 18' 7.488" E	139.30208	1° 43' 32.507" N	1.725696	0.0568	200 NM RI
OCS-717	139° 18' 4.131" E	139.301148	1° 43' 33.088" N	1.725858	0.2140	200 NM RI
OCS-718	139° 17' 51.598" E	139.297666	1° 43' 35.830" N	1.72662	0.0542	200 NM RI
OCS-719	139° 17' 48.402" E	139.296778	1° 43' 36.405" N	1.726779	0.1084	200 NM RI
OCS-720	139° 17' 42.008" E	139.295002	1° 43' 37.549" N	1.727097	0.0552	200 NM RI
OCS-721	139° 17' 38.750" E	139.294097	1° 43' 38.129" N	1.727258	0.0670	200 NM RI
OCS-722	139° 17' 34.794" E	139.292998	1° 43' 38.828" N	1.727452	0.1361	200 NM RI
OCS-723	139° 17' 26.759" E	139.290766	1° 43' 40.240" N	1.727844	0.0680	200 NM RI
OCS-724	139° 17' 22.743" E	139.289651	1° 43' 40.942" N	1.72804	0.2724	200 NM RI
OCS-725	139° 17' 6.655" E	139.285182	1° 43' 43.741" N	1.728817	0.0681	200 NM RI
OCS-726	139° 17' 2.634" E	139.284065	1° 43' 44.437" N	1.72901	0.1362	200 NM RI
OCS-727	139° 16' 54.590" E	139.281831	1° 43' 45.823" N	1.729395	0.0680	200 NM RI
OCS-728	139° 16' 50.570" E	139.280714	1° 43' 46.511" N	1.729587	0.5432	200 NM RI
OCS-729	139° 16' 18.474" E	139.271798	1° 43' 51.982" N	1.731106	0.0678	200 NM RI
OCS-730	139° 16' 14.465" E	139.270685	1° 43' 52.662" N	1.731295	0.1357	200 NM RI
OCS-731	139° 16' 6.443" E	139.268456	1° 43' 54.016" N	1.731671	0.0678	200 NM RI
OCS-732	139° 16' 2.433" E	139.267342	1° 43' 54.689" N	1.731858	0.2715	200 NM RI
OCS-733	139° 15' 46.379" E	139.262883	1° 43' 57.369" N	1.732602	0.0678	200 NM RI
OCS-734	139° 15' 42.369" E	139.261769	1° 43' 58.035" N	1.732787	0.1357	200 NM RI
OCS-735	139° 15' 34.344" E	139.25954	1° 43' 59.360" N	1.733156	0.0678	200 NM RI
OCS-736	139° 15' 30.335" E	139.258427	1° 44' 0.019" N	1.733339	1.0828	200 NM RI
OCS-737	139° 14' 26.279" E	139.240633	1° 44' 10.488" N	1.736247	0.0671	200 NM RI
OCS-738	139° 14' 22.307" E	139.23953	1° 44' 11.134" N	1.736426	0.1344	200 NM RI
OCS-739	139° 14' 14.355" E	139.237321	1° 44' 12.420" N	1.736783	0.0672	200 NM RI
OCS-740	139° 14' 10.379" E	139.236216	1° 44' 13.059" N	1.736961	0.2689	200 NM RI
OCS-741	139° 13' 54.461" E	139.231795	1° 44' 15.606" N	1.737668	0.0672	200 NM RI
OCS-742	139° 13' 50.482" E	139.23069	1° 44' 16.239" N	1.737844	0.1344	200 NM RI
OCS-743	139° 13' 42.523" E	139.228479	1° 44' 17.498" N	1.738194	0.0672	200 NM RI
OCS-744	139° 13' 38.546" E	139.227374	1° 44' 18.124" N	1.738368	0.5380	200 NM RI
OCS-745	139° 13' 6.684" E	139.218523	1° 44' 23.110" N	1.739753	0.0664	200 NM RI
OCS-746	139° 13' 2.751" E	139.217431	1° 44' 23.722" N	1.739923	0.1329	200 NM RI
OCS-747	139° 12' 54.878" E	139.215244	1° 44' 24.941" N	1.740261	0.0664	200 NM RI
OCS-748	139° 12' 50.943" E	139.214151	1° 44' 25.547" N	1.74043	0.2659	200 NM RI
OCS-749	139° 12' 35.190" E	139.209775	1° 44' 27.958" N	1.741099	0.0650	200 NM RI
OCS-750	139° 12' 31.337" E	139.208705	1° 44' 28.545" N	1.741262	0.1300	200 NM RI
OCS-751	139° 12' 23.630" E	139.206564	1° 44' 29.712" N	1.741587	0.0624	200 NM RI
OCS-752	139° 12' 19.932" E	139.205537	1° 44' 30.269" N	1.741741	38.0618	200 NM RI
OCS-753	138° 34' 43.582" E	138.578773	1° 50' 8.003" N	1.835556	49.1895	200 NM RI
OCS-754	137° 47' 2.567" E	137.784046	2° 2' 3.652" N	2.034348	2.1101	200 NM RI
OCS-755	137° 45' 18.710" E	137.755197	2° 3' 16.254" N	2.054515	0.0508	200 NM RI
OCS-756	137° 45' 16.208" E	137.754502	2° 3' 18.000" N	2.055	0.1016	200 NM RI
OCS-757	137° 45' 11.205" E	137.753113	2° 3' 21.488" N	2.055969	0.0507	200 NM RI

OCS-758	137° 45' 8.704" E	137.752418	2° 3' 23.229" N	2.056453	0.2050	200 NM RI
OCS-759	137° 44' 58.594" E	137.749609	2° 3' 30.258" N	2.058405	0.0512	200 NM RI
OCS-760	137° 44' 56.066" E	137.748907	2° 3' 32.013" N	2.058892	0.1025	200 NM RI
OCS-761	137° 44' 51.008" E	137.747502	2° 3' 35.519" N	2.059866	0.0512	200 NM RI
OCS-762	137° 44' 48.480" E	137.7468	2° 3' 37.270" N	2.060353	0.4140	200 NM RI
OCS-763	137° 44' 28.030" E	137.741119	2° 3' 51.409" N	2.06428	0.0517	200 NM RI
OCS-764	137° 44' 25.475" E	137.74041	2° 3' 53.174" N	2.06477	0.1035	200 NM RI
OCS-765	137° 44' 20.360" E	137.738989	2° 3' 56.700" N	2.06575	0.0517	200 NM RI
OCS-766	137° 44' 17.803" E	137.738279	2° 3' 58.461" N	2.066239	0.2070	200 NM RI
OCS-767	137° 44' 7.563" E	137.735434	2° 4' 5.502" N	2.068195	0.0517	200 NM RI
OCS-768	137° 44' 5.004" E	137.734723	2° 4' 7.259" N	2.068683	0.1034	200 NM RI
OCS-769	137° 43' 59.882" E	137.733301	2° 4' 10.771" N	2.069658	0.0517	200 NM RI
OCS-770	137° 43' 57.323" E	137.73259	2° 4' 12.523" N	2.070145	0.8339	200 NM RI
OCS-771	137° 43' 15.987" E	137.721107	2° 4' 40.788" N	2.077997	0.1041	200 NM RI
OCS-772	137° 43' 10.820" E	137.719672	2° 4' 44.311" N	2.078975	0.2084	200 NM RI
OCS-773	137° 43' 0.472" E	137.716798	2° 4' 51.347" N	2.08093	0.1042	200 NM RI
OCS-774	137° 42' 55.294" E	137.71536	2° 4' 54.857" N	2.081905	0.4169	200 NM RI
OCS-775	137° 42' 34.555" E	137.709599	2° 5' 8.879" N	2.0858	0.1042	200 NM RI
OCS-776	137° 42' 29.369" E	137.708158	2° 5' 12.376" N	2.086771	0.2084	200 NM RI
OCS-777	137° 42' 18.984" E	137.705273	2° 5' 19.358" N	2.088711	0.1041	200 NM RI
OCS-778	137° 42' 13.790" E	137.703831	2° 5' 22.841" N	2.089678	0.8339	200 NM RI
OCS-779	137° 41' 32.162" E	137.692267	2° 5' 50.671" N	2.097409	0.1041	200 NM RI
OCS-780	137° 41' 26.959" E	137.690822	2° 5' 54.139" N	2.098372	0.2084	200 NM RI
OCS-781	137° 41' 16.538" E	137.687927	2° 6' 1.067" N	2.100296	0.1042	200 NM RI
OCS-782	137° 41' 11.325" E	137.686479	2° 6' 4.522" N	2.101256	0.4169	200 NM RI
OCS-783	137° 40' 50.442" E	137.680678	2° 6' 18.326" N	2.105091	0.1042	200 NM RI
OCS-784	137° 40' 45.219" E	137.679228	2° 6' 21.769" N	2.106047	0.2084	200 NM RI
OCS-785	137° 40' 34.763" E	137.676323	2° 6' 28.642" N	2.107956	0.1041	200 NM RI
OCS-786	137° 40' 29.533" E	137.67487	2° 6' 32.069" N	2.108908	0.8339	200 NM RI
OCS-787	137° 39' 47.619" E	137.663227	2° 6' 59.461" N	2.116517	0.1041	200 NM RI
OCS-788	137° 39' 42.380" E	137.661772	2° 7' 2.875" N	2.117465	0.2084	200 NM RI
OCS-789	137° 39' 31.888" E	137.658858	2° 7' 9.693" N	2.119359	0.1042	200 NM RI
OCS-790	137° 39' 26.639" E	137.6574	2° 7' 13.094" N	2.120304	0.4169	200 NM RI
OCS-791	137° 39' 5.613" E	137.651559	2° 7' 26.678" N	2.124077	0.1042	200 NM RI
OCS-792	137° 39' 0.356" E	137.650099	2° 7' 30.065" N	2.125018	0.2084	200 NM RI
OCS-793	137° 38' 49.828" E	137.647175	2° 7' 36.828" N	2.126897	0.1041	200 NM RI
OCS-794	137° 38' 44.563" E	137.645712	2° 7' 40.201" N	2.127834	0.8339	200 NM RI
OCS-795	137° 38' 2.367" E	137.633991	2° 8' 7.152" N	2.13532	0.1041	200 NM RI
OCS-796	137° 37' 57.093" E	137.632526	2° 8' 10.510" N	2.136253	0.2084	200 NM RI
OCS-797	137° 37' 46.531" E	137.629592	2° 8' 17.218" N	2.138116	0.1042	200 NM RI
OCS-798	137° 37' 41.247" E	137.628124	2° 8' 20.564" N	2.139045	0.4169	200 NM RI
OCS-799	137° 37' 20.082" E	137.622245	2° 8' 33.927" N	2.142757	0.1042	200 NM RI
OCS-800	137° 37' 14.790" E	137.620775	2° 8' 37.258" N	2.143683	0.2084	200 NM RI
OCS-801	137° 37' 4.193" E	137.617831	2° 8' 43.910" N	2.145531	0.1042	200 NM RI
OCS-802	137° 36' 58.893" E	137.616359	2° 8' 47.228" N	2.146452	0.8340	200 NM RI
OCS-803	137° 36' 16.419" E	137.604561	2° 9' 13.735" N	2.153815	0.1042	200 NM RI
OCS-804	137° 36' 11.110" E	137.603086	2° 9' 17.038" N	2.154733	0.2084	200 NM RI
OCS-805	137° 36' 0.479" E	137.600133	2° 9' 23.635" N	2.156565	0.1042	200 NM RI

OCS-806	137° 35' 55.160" E	137.598656	2° 9' 26.925" N	2.157479	0.4169	200 NM RI
OCS-807	137° 35' 33.858" E	137.592738	2° 9' 40.065" N	2.161129	0.1042	200 NM RI
OCS-808	137° 35' 28.531" E	137.591259	2° 9' 43.342" N	2.162039	0.2084	200 NM RI
OCS-809	137° 35' 17.865" E	137.588296	2° 9' 49.882" N	2.163856	0.1041	200 NM RI
OCS-810	137° 35' 12.531" E	137.586814	2° 9' 53.144" N	2.164762	0.8340	200 NM RI
OCS-811	137° 34' 29.785" E	137.57494	2° 10' 19.204" N	2.172001	0.1042	200 NM RI
OCS-812	137° 34' 24.442" E	137.573456	2° 10' 22.452" N	2.172903	0.2084	200 NM RI
OCS-813	137° 34' 13.743" E	137.570484	2° 10' 28.936" N	2.174704	0.1042	200 NM RI
OCS-814	137° 34' 8.391" E	137.568998	2° 10' 32.170" N	2.175603	0.4169	200 NM RI
OCS-815	137° 33' 46.954" E	137.563043	2° 10' 45.086" N	2.179191	0.1042	200 NM RI
OCS-816	137° 33' 41.593" E	137.561554	2° 10' 48.306" N	2.180085	0.2084	200 NM RI
OCS-817	137° 33' 30.860" E	137.558572	2° 10' 54.735" N	2.181871	0.1042	200 NM RI
OCS-818	137° 33' 25.492" E	137.557081	2° 10' 57.940" N	2.182761	0.8340	200 NM RI
OCS-819	137° 32' 42.478" E	137.545133	2° 11' 23.551" N	2.189875	0.0518	200 NM RI
OCS-820	137° 32' 39.804" E	137.54439	2° 11' 25.140" N	2.190317	0.1037	200 NM RI
OCS-821	137° 32' 34.449" E	137.542903	2° 11' 28.319" N	2.1912	0.0519	200 NM RI
OCS-822	137° 32' 31.771" E	137.542159	2° 11' 29.907" N	2.191641	0.2076	200 NM RI
OCS-823	137° 32' 21.046" E	137.539179	2° 11' 36.255" N	2.193404	0.0519	200 NM RI
OCS-824	137° 32' 18.366" E	137.538435	2° 11' 37.839" N	2.193844	0.1038	200 NM RI
OCS-825	137° 32' 13.001" E	137.536945	2° 11' 41.004" N	2.194723	0.0519	200 NM RI
OCS-826	137° 32' 10.319" E	137.5362	2° 11' 42.585" N	2.195162	0.2534	200 NM RI
OCS-827	137° 31' 57.209" E	137.532558	2° 11' 50.298" N	2.197305	49.0370	200 NM RI
OCS-828	137° 3' 42.254" E	137.061737	2° 52' 5.038" N	2.868066	0.0446	200 NM RI
OCS-829	137° 3' 40.711" E	137.061308	2° 52' 7.234" N	2.868676	0.0948	200 NM RI
OCS-830	137° 3' 37.427" E	137.060396	2° 52' 11.898" N	2.869972	0.0474	200 NM RI
OCS-831	137° 3' 35.785" E	137.05994	2° 52' 14.227" N	2.870619	0.1975	200 NM RI
OCS-832	137° 3' 28.936" E	137.058038	2° 52' 23.932" N	2.873314	0.0494	200 NM RI
OCS-833	137° 3' 27.223" E	137.057562	2° 52' 26.356" N	2.873988	0.0987	200 NM RI
OCS-834	137° 3' 23.793" E	137.056609	2° 52' 31.204" N	2.875334	0.0493	200 NM RI
OCS-835	137° 3' 22.078" E	137.056133	2° 52' 33.624" N	2.876007	0.4050	200 NM RI
OCS-836	137° 3' 7.981" E	137.052217	2° 52' 53.493" N	2.881526	0.0506	200 NM RI
OCS-837	137° 3' 6.219" E	137.051727	2° 52' 55.974" N	2.882215	0.1012	200 NM RI
OCS-838	137° 3' 2.690" E	137.050747	2° 53' 0.934" N	2.883593	0.0506	200 NM RI
OCS-839	137° 3' 0.925" E	137.050257	2° 53' 3.412" N	2.884281	0.2025	200 NM RI
OCS-840	137° 2' 53.854" E	137.048293	2° 53' 13.326" N	2.887035	0.0506	200 NM RI
OCS-841	137° 2' 52.087" E	137.047802	2° 53' 15.801" N	2.887722	0.1012	200 NM RI
OCS-842	137° 2' 48.547" E	137.046819	2° 53' 20.751" N	2.889097	0.0505	200 NM RI
OCS-843	137° 2' 46.777" E	137.046327	2° 53' 23.222" N	2.889784	0.8223	200 NM RI
OCS-844	137° 2' 17.953" E	137.03832	2° 54' 3.417" N	2.900949	0.1027	200 NM RI
OCS-845	137° 2' 14.348" E	137.037319	2° 54' 8.432" N	2.902342	0.2055	200 NM RI
OCS-846	137° 2' 7.119" E	137.035311	2° 54' 18.457" N	2.905127	0.1027	200 NM RI
OCS-847	137° 2' 3.500" E	137.034305	2° 54' 23.465" N	2.906518	0.4111	200 NM RI
OCS-848	137° 1' 48.987" E	137.030274	2° 54' 43.485" N	2.912079	0.1027	200 NM RI
OCS-849	137° 1' 45.355" E	137.029265	2° 54' 48.482" N	2.913467	0.2055	200 NM RI
OCS-850	137° 1' 38.075" E	137.027243	2° 54' 58.471" N	2.916242	0.1027	200 NM RI
OCS-851	137° 1' 34.431" E	137.026231	2° 55' 3.458" N	2.917627	0.8223	200 NM RI
OCS-852	137° 1' 5.198" E	137.018111	2° 55' 43.352" N	2.928709	0.1027	200 NM RI
OCS-853	137° 1' 1.541" E	137.017095	2° 55' 48.330" N	2.930092	0.2055	200 NM RI

OCS-854	137° 0' 54.209" E	137.015058	2° 55' 58.282" N	2.932856	0.1027	200 NM RI
OCS-855	137° 0' 50.539" E	137.014039	2° 56' 3.251" N	2.934236	0.4111	200 NM RI
OCS-856	137° 0' 35.822" E	137.009951	2° 56' 23.120" N	2.939756	0.1027	200 NM RI
OCS-857	137° 0' 32.139" E	137.008927	2° 56' 28.080" N	2.941133	0.2055	200 NM RI
OCS-858	137° 0' 24.757" E	137.006877	2° 56' 37.993" N	2.943887	0.1027	200 NM RI
OCS-859	137° 0' 21.062" E	137.005851	2° 56' 42.942" N	2.945262	0.8224	200 NM RI
OCS-860	136° 59' 51.423" E	136.997617	2° 57' 22.533" N	2.956259	0.1027	200 NM RI
OCS-861	136° 59' 47.714" E	136.996587	2° 57' 27.473" N	2.957631	0.2055	200 NM RI
OCS-862	136° 59' 40.282" E	136.994523	2° 57' 37.348" N	2.960374	0.1027	200 NM RI
OCS-863	136° 59' 36.561" E	136.993489	2° 57' 42.278" N	2.961744	0.4111	200 NM RI
OCS-864	136° 59' 21.642" E	136.989345	2° 58' 1.995" N	2.967221	0.1027	200 NM RI
OCS-865	136° 59' 17.908" E	136.988308	2° 58' 6.916" N	2.968588	0.2055	200 NM RI
OCS-866	136° 59' 10.425" E	136.986229	2° 58' 16.752" N	2.97132	0.1027	200 NM RI
OCS-867	136° 59' 6.680" E	136.985189	2° 58' 21.663" N	2.972684	0.8224	200 NM RI
OCS-868	136° 58' 36.637" E	136.976844	2° 59' 0.945" N	2.983596	0.1027	200 NM RI
OCS-869	136° 58' 32.878" E	136.9758	2° 59' 5.847" N	2.984957	0.2055	200 NM RI
OCS-870	136° 58' 25.345" E	136.973707	2° 59' 15.644" N	2.987679	0.1027	200 NM RI
OCS-871	136° 58' 21.574" E	136.972659	2° 59' 20.537" N	2.989038	0.4111	200 NM RI
OCS-872	136° 58' 6.453" E	136.968459	2° 59' 40.098" N	2.994472	0.1027	200 NM RI
OCS-873	136° 58' 2.669" E	136.967408	2° 59' 44.981" N	2.995828	0.2055	200 NM RI
OCS-874	136° 57' 55.086" E	136.965302	2° 59' 54.739" N	2.998539	0.1027	200 NM RI
OCS-875	136° 57' 51.291" E	136.964247	2° 59' 59.611" N	2.999892	0.8224	200 NM RI
OCS-876	136° 57' 20.847" E	136.955791	3° 0' 38.581" N	3.010717	0.1027	200 NM RI
OCS-877	136° 57' 17.039" E	136.954733	3° 0' 43.443" N	3.012067	0.2055	200 NM RI
OCS-878	136° 57' 9.406" E	136.952613	3° 0' 53.162" N	3.014767	0.1027	200 NM RI
OCS-879	136° 57' 5.584" E	136.951551	3° 0' 58.016" N	3.016115	0.4112	200 NM RI
OCS-880	136° 56' 50.265" E	136.947296	3° 1' 17.420" N	3.021505	0.1027	200 NM RI
OCS-881	136° 56' 46.431" E	136.946231	3° 1' 22.263" N	3.022851	0.2055	200 NM RI
OCS-882	136° 56' 38.749" E	136.944097	3° 1' 31.942" N	3.02554	0.1027	200 NM RI
OCS-883	136° 56' 34.903" E	136.943029	3° 1' 36.775" N	3.026882	0.8224	200 NM RI
OCS-884	136° 56' 4.062" E	136.934462	3° 2' 15.429" N	3.037619	0.1027	200 NM RI
OCS-885	136° 56' 0.205" E	136.93339	3° 2' 20.251" N	3.038959	0.2055	200 NM RI
OCS-886	136° 55' 52.473" E	136.931242	3° 2' 29.891" N	3.041636	0.1027	200 NM RI
OCS-887	136° 55' 48.602" E	136.930167	3° 2' 34.704" N	3.042973	0.4112	200 NM RI
OCS-888	136° 55' 33.085" E	136.925857	3° 2' 53.949" N	3.048319	0.1027	200 NM RI
OCS-889	136° 55' 29.202" E	136.924778	3° 2' 58.752" N	3.049653	0.2055	200 NM RI
OCS-890	136° 55' 21.420" E	136.922617	3° 3' 8.352" N	3.05232	0.1027	200 NM RI
OCS-891	136° 55' 17.526" E	136.921535	3° 3' 13.144" N	3.053651	0.8224	200 NM RI
OCS-892	136° 54' 46.291" E	136.912859	3° 3' 51.478" N	3.064299	0.0522	200 NM RI
OCS-893	136° 54' 44.306" E	136.912307	3° 3' 53.910" N	3.064975	0.1045	200 NM RI
OCS-894	136° 54' 40.331" E	136.911203	3° 3' 58.776" N	3.066327	0.0522	200 NM RI
OCS-895	136° 54' 38.343" E	136.910651	3° 4' 1.206" N	3.067002	0.2091	200 NM RI
OCS-896	136° 54' 30.375" E	136.908437	3° 4' 10.933" N	3.069704	0.0523	200 NM RI
OCS-897	136° 54' 28.382" E	136.907884	3° 4' 13.362" N	3.070378	0.1045	200 NM RI
OCS-898	136° 54' 24.393" E	136.906776	3° 4' 18.219" N	3.071728	0.0522	200 NM RI
OCS-899	136° 54' 22.398" E	136.906222	3° 4' 20.645" N	3.072401	0.4184	200 NM RI
OCS-900	136° 54' 6.407" E	136.90178	3° 4' 40.061" N	3.077795	0.0547	200 NM RI
OCS-901	136° 54' 4.315" E	136.901199	3° 4' 42.598" N	3.0785	0.1095	200 NM RI

OCS-902	136° 54' 0.123" E	136.900034	3° 4' 47.674" N	3.079909	0.0547	200 NM RI
OCS-903	136° 53' 58.026" E	136.899452	3° 4' 50.210" N	3.080614	0.2190	200 NM RI
OCS-904	136° 53' 49.627" E	136.897119	3° 5' 0.351" N	3.083431	0.0610	200 NM RI
OCS-905	136° 53' 47.287" E	136.896469	3° 5' 3.173" N	3.084215	0.1220	200 NM RI
OCS-906	136° 53' 42.599" E	136.895166	3° 5' 8.816" N	3.085782	0.0911	200 NM RI
OCS-907	136° 53' 39.094" E	136.894193	3° 5' 13.025" N	3.086952	0.1049	200 NM RI
OCS-908	136° 53' 35.052" E	136.89307	3° 5' 17.865" N	3.088296	0.0450	200 NM RI
OCS-909	136° 53' 33.317" E	136.892588	3° 5' 19.940" N	3.088872	0.2050	200 NM RI
OCS-910	136° 53' 25.406" E	136.890391	3° 5' 29.390" N	3.091497	0.0512	200 NM RI
OCS-911	136° 53' 23.428" E	136.889841	3° 5' 31.750" N	3.092153	0.1025	200 NM RI
OCS-912	136° 53' 19.467" E	136.888741	3° 5' 36.469" N	3.093464	0.0512	200 NM RI
OCS-913	136° 53' 17.486" E	136.888191	3° 5' 38.827" N	3.094118	0.4297	200 NM RI
OCS-914	136° 53' 0.854" E	136.883571	3° 5' 58.591" N	3.099609	0.0536	200 NM RI
OCS-915	136° 52' 58.776" E	136.882993	3° 6' 1.057" N	3.100294	0.1074	200 NM RI
OCS-916	136° 52' 54.614" E	136.881837	3° 6' 5.990" N	3.101664	0.0537	200 NM RI
OCS-917	136° 52' 52.531" E	136.881259	3° 6' 8.455" N	3.102349	0.2148	200 NM RI
OCS-918	136° 52' 44.191" E	136.878942	3° 6' 18.312" N	3.105087	0.0537	200 NM RI
OCS-919	136° 52' 42.106" E	136.878363	3° 6' 20.774" N	3.10577	0.1073	200 NM RI
OCS-920	136° 52' 37.932" E	136.877203	3° 6' 25.694" N	3.107137	0.0536	200 NM RI
OCS-921	136° 52' 35.845" E	136.876624	3° 6' 28.149" N	3.107819	0.8737	200 NM RI
OCS-922	136° 52' 1.814" E	136.867171	3° 7' 8.153" N	3.118931	0.1091	200 NM RI
OCS-923	136° 51' 57.557" E	136.865988	3° 7' 13.143" N	3.120318	0.2183	200 NM RI
OCS-924	136° 51' 49.026" E	136.863618	3° 7' 23.117" N	3.123088	0.1091	200 NM RI
OCS-925	136° 51' 44.754" E	136.862432	3° 7' 28.096" N	3.124471	0.4368	200 NM RI
OCS-926	136° 51' 27.632" E	136.857676	3° 7' 48.002" N	3.130001	0.1091	200 NM RI
OCS-927	136° 51' 23.347" E	136.856485	3° 7' 52.970" N	3.131381	0.2183	200 NM RI
OCS-928	136° 51' 14.761" E	136.8541	3° 8' 2.897" N	3.134138	0.1091	200 NM RI
OCS-929	136° 51' 10.464" E	136.852907	3° 8' 7.852" N	3.135514	0.8737	200 NM RI
OCS-930	136° 50' 36.000" E	136.843333	3° 8' 47.480" N	3.146522	0.1091	200 NM RI
OCS-931	136° 50' 31.689" E	136.842136	3° 8' 52.423" N	3.147895	0.2183	200 NM RI
OCS-932	136° 50' 23.049" E	136.839736	3° 9' 2.302" N	3.150639	0.1091	200 NM RI
OCS-933	136° 50' 18.724" E	136.838534	3° 9' 7.234" N	3.15201	0.4368	200 NM RI
OCS-934	136° 50' 1.386" E	136.833718	3° 9' 26.951" N	3.157486	0.1091	200 NM RI
OCS-935	136° 49' 57.047" E	136.832513	3° 9' 31.872" N	3.158853	0.2183	200 NM RI
OCS-936	136° 49' 48.354" E	136.830098	3° 9' 41.704" N	3.161584	0.1091	200 NM RI
OCS-937	136° 49' 44.003" E	136.82889	3° 9' 46.611" N	3.162948	0.8737	200 NM RI
OCS-938	136° 49' 9.109" E	136.819197	3° 10' 25.859" N	3.17385	0.1091	200 NM RI
OCS-939	136° 49' 4.745" E	136.817985	3° 10' 30.754" N	3.17521	0.2184	200 NM RI
OCS-940	136° 48' 55.998" E	136.815555	3° 10' 40.539" N	3.177927	0.1091	200 NM RI
OCS-941	136° 48' 51.619" E	136.814339	3° 10' 45.424" N	3.179284	0.4368	200 NM RI
OCS-942	136° 48' 34.068" E	136.809463	3° 11' 4.949" N	3.184708	0.1091	200 NM RI
OCS-943	136° 48' 29.676" E	136.808243	3° 11' 9.822" N	3.186062	0.2183	200 NM RI
OCS-944	136° 48' 20.877" E	136.805799	3° 11' 19.557" N	3.188766	0.1091	200 NM RI
OCS-945	136° 48' 16.472" E	136.804576	3° 11' 24.417" N	3.190116	0.8737	200 NM RI
OCS-946	136° 47' 41.154" E	136.794765	3° 12' 3.279" N	3.200911	0.1091	200 NM RI
OCS-947	136° 47' 36.737" E	136.793538	3° 12' 8.126" N	3.202257	0.2183	200 NM RI
OCS-948	136° 47' 27.884" E	136.791079	3° 12' 17.814" N	3.204948	0.1091	200 NM RI
OCS-949	136° 47' 23.453" E	136.789848	3° 12' 22.650" N	3.206292	0.4368	200 NM RI

OCS-950	136° 47' 5.690" E	136.784914	3° 12' 41.982" N	3.211662	0.1092	200 NM RI
OCS-951	136° 47' 1.245" E	136.783679	3° 12' 46.806" N	3.213002	0.2184	200 NM RI
OCS-952	136° 46' 52.340" E	136.781206	3° 12' 56.445" N	3.215679	0.1091	200 NM RI
OCS-953	136° 46' 47.883" E	136.779968	3° 13' 1.256" N	3.217016	0.8738	200 NM RI
OCS-954	136° 46' 12.144" E	136.77004	3° 13' 39.728" N	3.227702	0.1091	200 NM RI
OCS-955	136° 46' 7.674" E	136.768798	3° 13' 44.527" N	3.229035	0.2184	200 NM RI
OCS-956	136° 45' 58.717" E	136.76631	3° 13' 54.117" N	3.231699	0.1092	200 NM RI
OCS-957	136° 45' 54.233" E	136.765065	3° 13' 58.904" N	3.233029	0.4368	200 NM RI
OCS-958	136° 45' 36.261" E	136.760072	3° 14' 18.040" N	3.238344	0.1092	200 NM RI
OCS-959	136° 45' 31.764" E	136.758823	3° 14' 22.815" N	3.239671	0.2184	200 NM RI
OCS-960	136° 45' 22.754" E	136.756321	3° 14' 32.356" N	3.242321	0.1091	200 NM RI
OCS-961	136° 45' 18.246" E	136.755068	3° 14' 37.117" N	3.243644	0.8738	200 NM RI
OCS-962	136° 44' 42.090" E	136.745025	3° 15' 15.195" N	3.254221	0.1091	200 NM RI
OCS-963	136° 44' 37.568" E	136.743769	3° 15' 19.944" N	3.25554	0.2184	200 NM RI
OCS-964	136° 44' 28.507" E	136.741252	3° 15' 29.435" N	3.258177	0.1092	200 NM RI
OCS-965	136° 44' 23.971" E	136.739992	3° 15' 34.174" N	3.259493	0.4368	200 NM RI
OCS-966	136° 44' 5.792" E	136.734942	3° 15' 53.111" N	3.264753	0.1091	200 NM RI
OCS-967	136° 44' 1.244" E	136.733679	3° 15' 57.836" N	3.266066	0.2184	200 NM RI
OCS-968	136° 43' 52.131" E	136.731148	3° 16' 7.277" N	3.268688	0.1091	200 NM RI
OCS-969	136° 43' 47.571" E	136.729881	3° 16' 11.989" N	3.269997	0.8738	200 NM RI
OCS-970	136° 43' 11.003" E	136.719723	3° 16' 49.668" N	3.280463	0.1091	200 NM RI
OCS-971	136° 43' 6.429" E	136.718453	3° 16' 54.367" N	3.281769	0.2184	200 NM RI
OCS-972	136° 42' 57.265" E	136.715907	3° 17' 3.759" N	3.284377	0.1092	200 NM RI
OCS-973	136° 42' 52.678" E	136.714633	3° 17' 8.447" N	3.28568	0.4369	200 NM RI
OCS-974	136° 42' 34.294" E	136.709526	3° 17' 27.184" N	3.290884	0.1092	200 NM RI
OCS-975	136° 42' 29.694" E	136.708248	3° 17' 31.859" N	3.292183	0.2184	200 NM RI
OCS-976	136° 42' 20.479" E	136.705689	3° 17' 41.199" N	3.294778	0.1091	200 NM RI
OCS-977	136° 42' 15.868" E	136.704408	3° 17' 45.861" N	3.296072	0.8738	200 NM RI
OCS-978	136° 41' 38.892" E	136.694137	3° 18' 23.137" N	3.306427	0.1091	200 NM RI
OCS-979	136° 41' 34.267" E	136.692852	3° 18' 27.786" N	3.307718	0.2184	200 NM RI
OCS-980	136° 41' 25.002" E	136.690278	3° 18' 37.076" N	3.310299	0.1092	200 NM RI
OCS-981	136° 41' 20.363" E	136.68899	3° 18' 41.713" N	3.311587	0.4369	200 NM RI
OCS-982	136° 41' 1.776" E	136.683827	3° 19' 0.247" N	3.316735	0.1092	200 NM RI
OCS-983	136° 40' 57.126" E	136.682535	3° 19' 4.872" N	3.31802	0.2184	200 NM RI
OCS-984	136° 40' 47.810" E	136.679947	3° 19' 14.111" N	3.320586	0.1091	200 NM RI
OCS-985	136° 40' 43.148" E	136.678652	3° 19' 18.722" N	3.321867	0.8739	200 NM RI
OCS-986	136° 40' 5.768" E	136.668269	3° 19' 55.590" N	3.332108	0.1091	200 NM RI
OCS-987	136° 40' 1.093" E	136.66697	3° 20' 0.188" N	3.333385	0.2184	200 NM RI
OCS-988	136° 39' 51.727" E	136.664369	3° 20' 9.375" N	3.335938	0.1092	200 NM RI
OCS-989	136° 39' 47.039" E	136.663066	3° 20' 13.961" N	3.337211	0.4369	200 NM RI
OCS-990	136° 39' 28.252" E	136.657848	3° 20' 32.290" N	3.342303	0.1092	200 NM RI
OCS-991	136° 39' 23.551" E	136.656542	3° 20' 36.863" N	3.343573	0.2184	200 NM RI
OCS-992	136° 39' 14.135" E	136.653926	3° 20' 46.000" N	3.346111	0.1091	200 NM RI
OCS-993	136° 39' 9.423" E	136.652618	3° 20' 50.559" N	3.347378	0.8739	200 NM RI
OCS-994	136° 38' 31.644" E	136.642123	3° 21' 27.015" N	3.357504	0.1091	200 NM RI
OCS-995	136° 38' 26.920" E	136.640811	3° 21' 31.561" N	3.358767	0.2184	200 NM RI
OCS-996	136° 38' 17.454" E	136.638182	3° 21' 40.645" N	3.36129	0.1092	200 NM RI
OCS-997	136° 38' 12.717" E	136.636866	3° 21' 45.179" N	3.36255	0.4369	200 NM RI

OCS-998	136° 37' 53.731" E	136.631592	3° 22' 3.301" N	3.367584	0.1092	200 NM RI
OCS-999	136° 37' 48.980" E	136.630272	3° 22' 7.823" N	3.36884	0.2184	200 NM RI
OCS-1000	136° 37' 39.465" E	136.627629	3° 22' 16.855" N	3.371349	0.1091	200 NM RI
OCS-1001	136° 37' 34.704" E	136.626307	3° 22' 21.363" N	3.372601	0.8739	200 NM RI
OCS-1002	136° 36' 56.530" E	136.615703	3° 22' 57.402" N	3.382612	0.1091	200 NM RI
OCS-1003	136° 36' 51.757" E	136.614377	3° 23' 1.896" N	3.38386	0.2184	200 NM RI
OCS-1004	136° 36' 42.193" E	136.61172	3° 23' 10.876" N	3.386354	0.1092	200 NM RI
OCS-1005	136° 36' 37.406" E	136.610391	3° 23' 15.358" N	3.387599	0.4369	200 NM RI
OCS-1006	136° 36' 18.224" E	136.605062	3° 23' 33.270" N	3.392575	0.1092	200 NM RI
OCS-1007	136° 36' 13.425" E	136.603729	3° 23' 37.739" N	3.393816	0.2184	200 NM RI
OCS-1008	136° 36' 3.812" E	136.601059	3° 23' 46.667" N	3.396296	0.1091	200 NM RI
OCS-1009	136° 35' 59.002" E	136.599723	3° 23' 51.122" N	3.397534	0.8739	200 NM RI
OCS-1010	136° 35' 20.438" E	136.589011	3° 24' 26.739" N	3.407428	0.1091	200 NM RI
OCS-1011	136° 35' 15.616" E	136.587671	3° 24' 31.181" N	3.408661	0.2184	200 NM RI
OCS-1012	136° 35' 5.955" E	136.584988	3° 24' 40.055" N	3.411126	0.1092	200 NM RI
OCS-1013	136° 35' 1.119" E	136.583644	3° 24' 44.485" N	3.412357	0.4369	200 NM RI
OCS-1014	136° 34' 41.743" E	136.578262	3° 25' 2.186" N	3.417274	0.1092	200 NM RI
OCS-1015	136° 34' 36.896" E	136.576916	3° 25' 6.601" N	3.4185	0.2184	200 NM RI
OCS-1016	136° 34' 27.187" E	136.574219	3° 25' 15.423" N	3.420951	0.1092	200 NM RI
OCS-1017	136° 34' 22.328" E	136.572869	3° 25' 19.825" N	3.422174	0.8739	200 NM RI
OCS-1018	136° 33' 43.379" E	136.56205	3° 25' 55.018" N	3.431949	0.1091	200 NM RI
OCS-1019	136° 33' 38.508" E	136.560697	3° 25' 59.406" N	3.433168	0.2184	200 NM RI
OCS-1020	136° 33' 28.751" E	136.557986	3° 26' 8.174" N	3.435604	0.1092	200 NM RI
OCS-1021	136° 33' 23.868" E	136.55663	3° 26' 12.550" N	3.436819	0.4369	200 NM RI
OCS-1022	136° 33' 4.300" E	136.551194	3° 26' 30.037" N	3.441677	0.1092	200 NM RI
OCS-1023	136° 32' 59.405" E	136.549835	3° 26' 34.400" N	3.442889	0.2184	200 NM RI
OCS-1024	136° 32' 49.600" E	136.547111	3° 26' 43.114" N	3.445309	0.1091	200 NM RI
OCS-1025	136° 32' 44.694" E	136.545748	3° 26' 47.462" N	3.446517	0.8740	200 NM RI
OCS-1026	136° 32' 5.363" E	136.534823	3° 27' 22.226" N	3.456174	0.1091	200 NM RI
OCS-1027	136° 32' 0.446" E	136.533457	3° 27' 26.560" N	3.457378	0.2184	200 NM RI
OCS-1028	136° 31' 50.593" E	136.53072	3° 27' 35.221" N	3.459784	0.1092	200 NM RI
OCS-1029	136° 31' 45.662" E	136.529351	3° 27' 39.543" N	3.460984	0.4369	200 NM RI
OCS-1030	136° 31' 25.905" E	136.523862	3° 27' 56.815" N	3.465782	0.1092	200 NM RI
OCS-1031	136° 31' 20.962" E	136.52249	3° 28' 1.124" N	3.466979	0.2184	200 NM RI
OCS-1032	136° 31' 11.063" E	136.51974	3° 28' 9.730" N	3.469369	0.1092	200 NM RI
OCS-1033	136° 31' 6.110" E	136.518364	3° 28' 14.024" N	3.470562	0.8740	200 NM RI
OCS-1034	136° 30' 26.403" E	136.507334	3° 28' 48.354" N	3.480098	0.0553	200 NM RI
OCS-1035	136° 30' 23.889" E	136.506636	3° 28' 50.524" N	3.480701	0.1107	200 NM RI
OCS-1036	136° 30' 18.854" E	136.505237	3° 28' 54.865" N	3.481907	0.0553	200 NM RI
OCS-1037	136° 30' 16.335" E	136.504537	3° 28' 57.034" N	3.482509	0.2216	200 NM RI
OCS-1038	136° 30' 6.245" E	136.501735	3° 29' 5.708" N	3.484919	0.0554	200 NM RI
OCS-1039	136° 30' 3.723" E	136.501034	3° 29' 7.874" N	3.48552	0.1108	200 NM RI
OCS-1040	136° 29' 58.673" E	136.499631	3° 29' 12.203" N	3.486723	0.0554	200 NM RI
OCS-1041	136° 29' 56.148" E	136.49893	3° 29' 14.365" N	3.487324	0.4432	200 NM RI
OCS-1042	136° 29' 35.916" E	136.49331	3° 29' 31.662" N	3.492128	0.0576	200 NM RI
OCS-1043	136° 29' 33.286" E	136.492579	3° 29' 33.907" N	3.492752	0.1152	200 NM RI
OCS-1044	136° 29' 28.020" E	136.491117	3° 29' 38.396" N	3.493999	0.0576	200 NM RI
OCS-1045	136° 29' 25.386" E	136.490385	3° 29' 40.638" N	3.494622	0.2305	200 NM RI

OCS-1046	136° 29' 14.838" E	136.487455	3° 29' 49.603" N	3.497112	0.0634	200 NM RI
OCS-1047	136° 29' 11.934" E	136.486648	3° 29' 52.067" N	3.497796	0.1268	200 NM RI
OCS-1048	136° 29' 6.122" E	136.485034	3° 29' 56.991" N	3.499164	0.0777	200 NM RI
OCS-1049	136° 29' 2.559" E	136.484044	3° 30' 0.004" N	3.500001	0.0315	200 NM RI
OCS-1050	136° 29' 1.112" E	136.483642	3° 30' 1.225" N	3.50034	0.0917	200 NM RI
OCS-1051	136° 28' 56.902" E	136.482473	3° 30' 4.771" N	3.501325	0.0458	200 NM RI
OCS-1052	136° 28' 54.796" E	136.481888	3° 30' 6.544" N	3.501818	0.2065	200 NM RI
OCS-1053	136° 28' 45.303" E	136.479251	3° 30' 14.523" N	3.504034	0.0516	200 NM RI
OCS-1054	136° 28' 42.930" E	136.478592	3° 30' 16.515" N	3.504588	0.1032	200 NM RI
OCS-1055	136° 28' 38.180" E	136.477272	3° 30' 20.498" N	3.505694	0.0516	200 NM RI
OCS-1056	136° 28' 35.805" E	136.476613	3° 30' 22.486" N	3.506246	0.4308	200 NM RI
OCS-1057	136° 28' 15.959" E	136.4711	3° 30' 39.081" N	3.510856	0.0538	200 NM RI
OCS-1058	136° 28' 13.478" E	136.470411	3° 30' 41.152" N	3.511431	0.1077	200 NM RI
OCS-1059	136° 28' 8.513" E	136.469031	3° 30' 45.293" N	3.512581	0.0538	200 NM RI
OCS-1060	136° 28' 6.031" E	136.468342	3° 30' 47.360" N	3.513156	0.2153	200 NM RI
OCS-1061	136° 27' 56.088" E	136.46558	3° 30' 55.628" N	3.515452	0.0538	200 NM RI
OCS-1062	136° 27' 53.603" E	136.46489	3° 30' 57.691" N	3.516025	0.1076	200 NM RI
OCS-1063	136° 27' 48.630" E	136.463508	3° 31' 1.816" N	3.517171	0.0537	200 NM RI
OCS-1064	136° 27' 46.144" E	136.462818	3° 31' 3.875" N	3.517743	0.8740	200 NM RI
OCS-1065	136° 27' 5.699" E	136.451583	3° 31' 37.325" N	3.527035	0.1091	200 NM RI
OCS-1066	136° 27' 0.642" E	136.450178	3° 31' 41.495" N	3.528193	0.2184	200 NM RI
OCS-1067	136° 26' 50.512" E	136.447364	3° 31' 49.827" N	3.530507	0.1092	200 NM RI
OCS-1068	136° 26' 45.442" E	136.445956	3° 31' 53.985" N	3.531662	0.4370	200 NM RI
OCS-1069	136° 26' 25.131" E	136.440314	3° 32' 10.597" N	3.536277	0.1092	200 NM RI
OCS-1070	136° 26' 20.050" E	136.438903	3° 32' 14.741" N	3.537428	0.2184	200 NM RI
OCS-1071	136° 26' 9.874" E	136.436076	3° 32' 23.017" N	3.539727	0.1091	200 NM RI
OCS-1072	136° 26' 4.784" E	136.434662	3° 32' 27.146" N	3.540874	0.8741	200 NM RI
OCS-1073	136° 25' 23.976" E	136.423327	3° 33' 0.150" N	3.550042	0.1092	200 NM RI
OCS-1074	136° 25' 18.875" E	136.42191	3° 33' 4.265" N	3.551185	0.2184	200 NM RI
OCS-1075	136° 25' 8.654" E	136.419071	3° 33' 12.484" N	3.553468	0.1092	200 NM RI
OCS-1076	136° 25' 3.540" E	136.41765	3° 33' 16.586" N	3.554607	0.4370	200 NM RI
OCS-1077	136° 24' 43.049" E	136.411958	3° 33' 32.974" N	3.55916	0.1092	200 NM RI
OCS-1078	136° 24' 37.923" E	136.410534	3° 33' 37.062" N	3.560295	0.2184	200 NM RI
OCS-1079	136° 24' 27.658" E	136.407683	3° 33' 45.226" N	3.562563	0.1092	200 NM RI
OCS-1080	136° 24' 22.523" E	136.406257	3° 33' 49.298" N	3.563694	0.8741	200 NM RI
OCS-1081	136° 23' 41.359" E	136.394822	3° 34' 21.853" N	3.572737	0.1092	200 NM RI
OCS-1082	136° 23' 36.212" E	136.393392	3° 34' 25.912" N	3.573864	0.2184	200 NM RI
OCS-1083	136° 23' 25.903" E	136.390529	3° 34' 34.019" N	3.576116	0.1092	200 NM RI
OCS-1084	136° 23' 20.745" E	136.389096	3° 34' 38.064" N	3.57724	0.4370	200 NM RI
OCS-1085	136° 23' 0.076" E	136.383355	3° 34' 54.226" N	3.581729	0.1092	200 NM RI
OCS-1086	136° 22' 54.906" E	136.381918	3° 34' 58.258" N	3.582849	0.2184	200 NM RI
OCS-1087	136° 22' 44.552" E	136.379042	3° 35' 6.308" N	3.585086	0.1092	200 NM RI
OCS-1088	136° 22' 39.373" E	136.377604	3° 35' 10.324" N	3.586201	0.8741	200 NM RI
OCS-1089	136° 21' 57.856" E	136.366071	3° 35' 42.425" N	3.595118	0.3235	200 NM RI
OCS-1090	136° 21' 42.445" E	136.36179	3° 35' 54.242" N	3.5984	0.6470	200 NM RI
OCS-1091	136° 21' 11.522" E	136.353201	3° 36' 17.753" N	3.604931	0.3236	200 NM RI
OCS-1092	136° 20' 56.012" E	136.348892	3° 36' 29.447" N	3.60818	0.1233	200 NM RI
OCS-1093	136° 20' 50.086" E	136.347246	3° 36' 33.878" N	3.609411	0.5532	200 NM RI

OCS-1094	136° 20' 23.646" E	136.339902	3° 36' 53.974" N	3.614993	0.1505	200 NM RI
OCS-1095	136° 20' 16.444" E	136.337901	3° 36' 59.427" N	3.616507	0.3009	200 NM RI
OCS-1096	136° 20' 2.021" E	136.333895	3° 37' 10.304" N	3.619529	0.1504	200 NM RI
OCS-1097	136° 19' 54.801" E	136.331889	3° 37' 15.727" N	3.621035	0.4370	200 NM RI
OCS-1098	136° 19' 33.797" E	136.326055	3° 37' 31.443" N	3.625401	0.1630	200 NM RI
OCS-1099	136° 19' 25.952" E	136.323876	3° 37' 37.288" N	3.627025	0.3260	200 NM RI
OCS-1100	136° 19' 10.236" E	136.31951	3° 37' 48.948" N	3.630263	0.1629	200 NM RI
OCS-1101	136° 19' 2.368" E	136.317324	3° 37' 54.760" N	3.631878	0.7713	200 NM RI
OCS-1102	136° 18' 25.071" E	136.306964	3° 38' 22.195" N	3.639499	0.1654	200 NM RI
OCS-1103	136° 18' 17.099" E	136.30475	3° 38' 28.115" N	3.641143	0.7216	200 NM RI
OCS-1104	136° 17' 42.210" E	136.295058	3° 38' 53.788" N	3.648274	0.3607	200 NM RI
OCS-1105	136° 17' 24.710" E	136.290197	3° 39' 6.543" N	3.651818	0.8742	200 NM RI
OCS-1106	136° 16' 42.165" E	136.278379	3° 39' 37.260" N	3.66035	0.1092	200 NM RI
OCS-1107	136° 16' 36.847" E	136.276902	3° 39' 41.089" N	3.661414	0.2185	200 NM RI
OCS-1108	136° 16' 26.194" E	136.273943	3° 39' 48.736" N	3.663538	0.1092	200 NM RI
OCS-1109	136° 16' 20.864" E	136.272462	3° 39' 52.551" N	3.664598	0.4370	200 NM RI
OCS-1110	136° 15' 59.511" E	136.266531	3° 40' 7.791" N	3.668831	0.1092	200 NM RI
OCS-1111	136° 15' 54.170" E	136.265047	3° 40' 11.592" N	3.669887	0.2185	200 NM RI
OCS-1112	136° 15' 43.475" E	136.262077	3° 40' 19.180" N	3.671995	0.1092	200 NM RI
OCS-1113	136° 15' 38.126" E	136.260591	3° 40' 22.965" N	3.673046	0.8742	200 NM RI
OCS-1114	136° 14' 55.249" E	136.24868	3° 40' 53.214" N	3.681448	0.1092	200 NM RI
OCS-1115	136° 14' 49.889" E	136.247191	3° 40' 56.984" N	3.682496	0.2185	200 NM RI
OCS-1116	136° 14' 39.153" E	136.244209	3° 41' 4.514" N	3.684587	0.1092	200 NM RI
OCS-1117	136° 14' 33.782" E	136.242717	3° 41' 8.270" N	3.685631	0.4370	200 NM RI
OCS-1118	136° 14' 12.264" E	136.23674	3° 41' 23.275" N	3.689799	0.1092	200 NM RI
OCS-1119	136° 14' 6.882" E	136.235245	3° 41' 27.016" N	3.690838	0.2185	200 NM RI
OCS-1120	136° 13' 56.106" E	136.232252	3° 41' 34.487" N	3.692913	0.1092	200 NM RI
OCS-1121	136° 13' 50.716" E	136.230754	3° 41' 38.213" N	3.693948	0.8742	200 NM RI
OCS-1122	136° 13' 7.511" E	136.218753	3° 42' 7.989" N	3.702219	0.1092	200 NM RI
OCS-1123	136° 13' 2.110" E	136.217253	3° 42' 11.700" N	3.70325	0.2185	200 NM RI
OCS-1124	136° 12' 51.293" E	136.214248	3° 42' 19.112" N	3.705309	0.1092	200 NM RI
OCS-1125	136° 12' 45.881" E	136.212745	3° 42' 22.809" N	3.706336	0.4371	200 NM RI
OCS-1126	136° 12' 24.201" E	136.206722	3° 42' 37.576" N	3.710438	0.1092	200 NM RI
OCS-1127	136° 12' 18.778" E	136.205216	3° 42' 41.259" N	3.711461	0.2185	200 NM RI
OCS-1128	136° 12' 7.921" E	136.2022	3° 42' 48.611" N	3.713503	0.1092	200 NM RI
OCS-1129	136° 12' 2.490" E	136.200692	3° 42' 52.277" N	3.714521	0.8742	200 NM RI
OCS-1130	136° 11' 18.964" E	136.188601	3° 43' 21.578" N	3.72266	0.1092	200 NM RI
OCS-1131	136° 11' 13.523" E	136.18709	3° 43' 25.229" N	3.723675	0.2185	200 NM RI
OCS-1132	136° 11' 2.626" E	136.184063	3° 43' 32.522" N	3.7257	0.1092	200 NM RI
OCS-1133	136° 10' 57.174" E	136.182548	3° 43' 36.159" N	3.726711	0.4371	200 NM RI
OCS-1134	136° 10' 35.334" E	136.176482	3° 43' 50.688" N	3.730747	0.1092	200 NM RI
OCS-1135	136° 10' 29.872" E	136.174964	3° 43' 54.310" N	3.731753	0.2185	200 NM RI
OCS-1136	136° 10' 18.935" E	136.171926	3° 44' 1.543" N	3.733762	0.1092	200 NM RI
OCS-1137	136° 10' 13.464" E	136.170407	3° 44' 5.150" N	3.734764	0.8742	200 NM RI
OCS-1138	136° 9' 29.621" E	136.158228	3° 44' 33.970" N	3.74277	0.1092	200 NM RI
OCS-1139	136° 9' 24.140" E	136.156706	3° 44' 37.562" N	3.743767	0.2185	200 NM RI
OCS-1140	136° 9' 13.164" E	136.153657	3° 44' 44.735" N	3.74576	0.1092	200 NM RI
OCS-1141	136° 9' 7.672" E	136.152131	3° 44' 48.312" N	3.746753	0.4371	200 NM RI

OCS-1142	136° 8' 45.674" E	136.146021	3° 45' 2.601" N	3.750722	0.1092	200 NM RI
OCS-1143	136° 8' 40.173" E	136.144493	3° 45' 6.163" N	3.751712	0.2185	200 NM RI
OCS-1144	136° 8' 29.158" E	136.141433	3° 45' 13.275" N	3.753687	0.1092	200 NM RI
OCS-1145	136° 8' 23.649" E	136.139902	3° 45' 16.821" N	3.754673	0.8743	200 NM RI
OCS-1146	136° 7' 39.493" E	136.127637	3° 45' 45.159" N	3.762544	0.1092	200 NM RI
OCS-1147	136° 7' 33.974" E	136.126104	3° 45' 48.691" N	3.763525	0.2185	200 NM RI
OCS-1148	136° 7' 22.920" E	136.123033	3° 45' 55.742" N	3.765484	0.1092	200 NM RI
OCS-1149	136° 7' 17.389" E	136.121497	3° 45' 59.260" N	3.766461	0.4371	200 NM RI
OCS-1150	136° 6' 55.237" E	136.115344	3° 46' 13.306" N	3.770363	0.1092	200 NM RI
OCS-1151	136° 6' 49.698" E	136.113805	3° 46' 16.808" N	3.771335	0.2185	200 NM RI
OCS-1152	136° 6' 38.606" E	136.110724	3° 46' 23.798" N	3.773277	0.1092	200 NM RI
OCS-1153	136° 6' 33.058" E	136.109183	3° 46' 27.284" N	3.774245	0.8743	200 NM RI
OCS-1154	136° 5' 48.596" E	136.096832	3° 46' 55.135" N	3.781982	0.1092	200 NM RI
OCS-1155	136° 5' 43.039" E	136.095289	3° 46' 58.606" N	3.782946	0.2185	200 NM RI
OCS-1156	136° 5' 31.909" E	136.092197	3° 47' 5.536" N	3.784871	0.1092	200 NM RI
OCS-1157	136° 5' 26.341" E	136.09065	3° 47' 8.992" N	3.785831	0.4371	200 NM RI
OCS-1158	136° 5' 4.037" E	136.084455	3° 47' 22.794" N	3.789665	0.1092	200 NM RI
OCS-1159	136° 4' 58.459" E	136.082905	3° 47' 26.235" N	3.790621	0.2185	200 NM RI
OCS-1160	136° 4' 47.291" E	136.079803	3° 47' 33.103" N	3.792529	0.1092	200 NM RI
OCS-1161	136° 4' 41.706" E	136.078252	3° 47' 36.528" N	3.79348	0.8743	200 NM RI
OCS-1162	136° 3' 56.943" E	136.065817	3° 48' 3.890" N	3.801081	0.1092	200 NM RI
OCS-1163	136° 3' 51.348" E	136.064263	3° 48' 7.299" N	3.802028	0.2185	200 NM RI
OCS-1164	136° 3' 40.143" E	136.061151	3° 48' 14.106" N	3.803918	0.1092	200 NM RI
OCS-1165	136° 3' 34.537" E	136.059594	3° 48' 17.501" N	3.804862	0.4371	200 NM RI
OCS-1166	136° 3' 12.084" E	136.053357	3° 48' 31.058" N	3.808627	0.1092	200 NM RI
OCS-1167	136° 3' 6.469" E	136.051797	3° 48' 34.437" N	3.809566	0.2185	200 NM RI
OCS-1168	136° 2' 55.227" E	136.048674	3° 48' 41.183" N	3.81144	0.1092	200 NM RI
OCS-1169	136° 2' 49.604" E	136.047112	3° 48' 44.546" N	3.812374	0.8743	200 NM RI
OCS-1170	136° 2' 4.545" E	136.034596	3° 49' 11.415" N	3.819838	0.0552	200 NM RI
OCS-1171	136° 2' 1.701" E	136.033806	3° 49' 13.108" N	3.820308	0.1104	200 NM RI
OCS-1172	136° 1' 56.005" E	136.032224	3° 49' 16.494" N	3.821248	0.0552	200 NM RI
OCS-1173	136° 1' 53.156" E	136.031432	3° 49' 18.185" N	3.821718	0.2210	200 NM RI
OCS-1174	136° 1' 41.747" E	136.028263	3° 49' 24.945" N	3.823596	0.0552	200 NM RI
OCS-1175	136° 1' 38.895" E	136.027471	3° 49' 26.633" N	3.824065	0.1105	200 NM RI
OCS-1176	136° 1' 33.187" E	136.025885	3° 49' 30.005" N	3.825001	0.0552	200 NM RI
OCS-1177	136° 1' 30.334" E	136.025093	3° 49' 31.687" N	3.825469	0.4421	200 NM RI
OCS-1178	136° 1' 7.473" E	136.018743	3° 49' 45.148" N	3.829208	0.0571	200 NM RI
OCS-1179	136° 1' 4.522" E	136.017923	3° 49' 46.883" N	3.82969	0.1142	200 NM RI
OCS-1180	136° 0' 58.614" E	136.016282	3° 49' 50.350" N	3.830653	0.0571	200 NM RI
OCS-1181	136° 0' 55.659" E	136.015461	3° 49' 52.081" N	3.831134	0.2284	200 NM RI
OCS-1182	136° 0' 43.830" E	136.012175	3° 49' 59.001" N	3.833056	0.0619	200 NM RI
OCS-1183	136° 0' 40.620" E	136.011283	3° 50' 0.875" N	3.833576	0.1239	200 NM RI
OCS-1184	136° 0' 34.198" E	136.009499	3° 50' 4.619" N	3.834616	0.0740	200 NM RI
OCS-1185	136° 0' 30.359" E	136.008433	3° 50' 6.852" N	3.835237	0.0353	200 NM RI
OCS-1186	136° 0' 28.528" E	136.007925	3° 50' 7.913" N	3.835531	0.0947	200 NM RI
OCS-1187	136° 0' 23.613" E	136.006559	3° 50' 10.760" N	3.836322	0.0473	200 NM RI
OCS-1188	136° 0' 21.154" E	136.005876	3° 50' 12.182" N	3.836717	0.2088	200 NM RI
OCS-1189	136° 0' 10.308" E	136.002863	3° 50' 18.448" N	3.838458	0.0522	200 NM RI

OCS-1190	136° 0' 7.597" E	136.00211	3° 50' 20.011" N	3.838892	0.1044	200 NM RI
OCS-1191	136° 0' 2.170" E	136.000603	3° 50' 23.136" N	3.83976	0.0522	200 NM RI
OCS-1192	135° 59' 59.458" E	135.999849	3° 50' 24.696" N	3.840193	0.4322	200 NM RI
OCS-1193	135° 59' 36.969" E	135.993603	3° 50' 37.608" N	3.84378	0.0540	200 NM RI
OCS-1194	135° 59' 34.160" E	135.992822	3° 50' 39.219" N	3.844227	0.1080	200 NM RI
OCS-1195	135° 59' 28.536" E	135.99126	3° 50' 42.437" N	3.845121	0.0540	200 NM RI
OCS-1196	135° 59' 25.724" E	135.990479	3° 50' 44.044" N	3.845568	0.2160	200 NM RI
OCS-1197	135° 59' 14.465" E	135.987352	3° 50' 50.468" N	3.847352	0.0539	200 NM RI
OCS-1198	135° 59' 11.653" E	135.98657	3° 50' 52.070" N	3.847797	0.1080	200 NM RI
OCS-1199	135° 59' 6.023" E	135.985006	3° 50' 55.272" N	3.848687	0.0539	200 NM RI
OCS-1200	135° 59' 3.209" E	135.984225	3° 50' 56.870" N	3.849131	0.8744	200 NM RI
OCS-1201	135° 58' 17.574" E	135.971548	3° 51' 22.744" N	3.856318	0.1092	200 NM RI
OCS-1202	135° 58' 11.871" E	135.969964	3° 51' 25.967" N	3.857213	0.2185	200 NM RI
OCS-1203	135° 58' 0.449" E	135.966791	3° 51' 32.402" N	3.859001	0.1092	200 NM RI
OCS-1204	135° 57' 54.735" E	135.965204	3° 51' 35.611" N	3.859892	0.4371	200 NM RI
OCS-1205	135° 57' 31.850" E	135.958847	3° 51' 48.421" N	3.86345	0.1092	200 NM RI
OCS-1206	135° 57' 26.127" E	135.957257	3° 51' 51.614" N	3.864337	0.2185	200 NM RI
OCS-1207	135° 57' 14.670" E	135.954075	3° 51' 57.985" N	3.866107	0.1092	200 NM RI
OCS-1208	135° 57' 8.941" E	135.952484	3° 52' 1.162" N	3.866989	0.8744	200 NM RI
OCS-1209	135° 56' 23.026" E	135.939729	3° 52' 26.533" N	3.874037	0.1092	200 NM RI
OCS-1210	135° 56' 17.288" E	135.938136	3° 52' 29.693" N	3.874915	0.2185	200 NM RI
OCS-1211	135° 56' 5.797" E	135.934943	3° 52' 36.002" N	3.876667	0.1092	200 NM RI
OCS-1212	135° 56' 0.048" E	135.933347	3° 52' 39.148" N	3.877541	0.4371	200 NM RI
OCS-1213	135° 55' 37.025" E	135.926951	3° 52' 51.706" N	3.881029	0.1092	200 NM RI
OCS-1214	135° 55' 31.267" E	135.925352	3° 52' 54.836" N	3.881899	0.2185	200 NM RI
OCS-1215	135° 55' 19.742" E	135.92215	3° 53' 1.082" N	3.883634	0.1092	200 NM RI
OCS-1216	135° 55' 13.978" E	135.920549	3° 53' 4.195" N	3.884498	0.8744	200 NM RI
OCS-1217	135° 54' 27.789" E	135.907719	3° 53' 29.060" N	3.891406	0.1092	200 NM RI
OCS-1218	135° 54' 22.017" E	135.906116	3° 53' 32.158" N	3.892266	0.2185	200 NM RI
OCS-1219	135° 54' 10.457" E	135.902905	3° 53' 38.340" N	3.893983	0.1092	200 NM RI
OCS-1220	135° 54' 4.675" E	135.901299	3° 53' 41.422" N	3.894839	0.4371	200 NM RI
OCS-1221	135° 53' 41.516" E	135.894866	3° 53' 53.727" N	3.898257	0.1092	200 NM RI
OCS-1222	135° 53' 35.725" E	135.893257	3° 53' 56.793" N	3.899109	0.2185	200 NM RI
OCS-1223	135° 53' 24.131" E	135.890037	3° 54' 2.912" N	3.900809	0.1092	200 NM RI
OCS-1224	135° 53' 18.334" E	135.888426	3° 54' 5.962" N	3.901656	0.8744	200 NM RI
OCS-1225	135° 52' 31.876" E	135.875521	3° 54' 30.319" N	3.908422	0.1092	200 NM RI
OCS-1226	135° 52' 26.071" E	135.873908	3° 54' 33.353" N	3.909265	0.2185	200 NM RI
OCS-1227	135° 52' 14.444" E	135.870679	3° 54' 39.408" N	3.910947	0.1092	200 NM RI
OCS-1228	135° 52' 8.628" E	135.869063	3° 54' 42.427" N	3.911785	0.4372	200 NM RI
OCS-1229	135° 51' 45.336" E	135.862593	3° 54' 54.477" N	3.915132	0.1092	200 NM RI
OCS-1230	135° 51' 39.512" E	135.860976	3° 54' 57.479" N	3.915966	0.2185	200 NM RI
OCS-1231	135° 51' 27.853" E	135.857737	3° 55' 3.470" N	3.917631	0.1092	200 NM RI
OCS-1232	135° 51' 22.023" E	135.856117	3° 55' 6.456" N	3.91846	0.8744	200 NM RI
OCS-1233	135° 50' 35.302" E	135.84314	3° 55' 30.302" N	3.925084	0.1092	200 NM RI
OCS-1234	135° 50' 29.464" E	135.841518	3° 55' 33.272" N	3.925909	0.2185	200 NM RI
OCS-1235	135° 50' 17.772" E	135.83827	3° 55' 39.199" N	3.927555	0.1092	200 NM RI
OCS-1236	135° 50' 11.923" E	135.836645	3° 55' 42.154" N	3.928376	0.4372	200 NM RI
OCS-1237	135° 49' 48.501" E	135.830139	3° 55' 53.947" N	3.931652	0.1092	200 NM RI

OCS-1238	135° 49' 42.644" E	135.828512	3° 55' 56.886" N	3.932468	0.2185	200 NM RI
OCS-1239	135° 49' 30.920" E	135.825256	3° 56' 2.749" N	3.934097	0.1092	200 NM RI
OCS-1240	135° 49' 25.058" E	135.823627	3° 56' 5.670" N	3.934908	0.8744	200 NM RI
OCS-1241	135° 48' 38.079" E	135.810578	3° 56' 29.002" N	3.941389	0.1092	200 NM RI
OCS-1242	135° 48' 32.209" E	135.808947	3° 56' 31.908" N	3.942197	0.2185	200 NM RI
OCS-1243	135° 48' 20.453" E	135.805681	3° 56' 37.706" N	3.943807	0.1092	200 NM RI
OCS-1244	135° 48' 14.572" E	135.804048	3° 56' 40.597" N	3.94461	0.4372	200 NM RI
OCS-1245	135° 47' 51.023" E	135.797506	3° 56' 52.132" N	3.947814	0.1092	200 NM RI
OCS-1246	135° 47' 45.135" E	135.795871	3° 56' 55.006" N	3.948613	0.2185	200 NM RI
OCS-1247	135° 47' 33.347" E	135.792597	3° 57' 0.740" N	3.950206	0.1092	200 NM RI
OCS-1248	135° 47' 27.453" E	135.790959	3° 57' 3.597" N	3.950999	0.8745	200 NM RI
OCS-1249	135° 46' 40.223" E	135.77784	3° 57' 26.412" N	3.957337	0.1092	200 NM RI
OCS-1250	135° 46' 34.321" E	135.7762	3° 57' 29.253" N	3.958126	0.2185	200 NM RI
OCS-1251	135° 46' 22.502" E	135.772917	3° 57' 34.922" N	3.959701	0.1092	200 NM RI
OCS-1252	135° 46' 16.590" E	135.771275	3° 57' 37.748" N	3.960485	0.2269	200 NM RI
OCS-1253	135° 46' 4.302" E	135.767862	3° 57' 43.601" N	3.962111	0.5924	200 NM PALAU
OCS-1254	135° 46' 35.393" E	135.776498	3° 58' 0.814" N	3.966893	2.9414	200 NM PALAU
OCS-1255	135° 49' 8.521" E	135.819033	3° 59' 28.539" N	3.991261	2.9415	200 NM PALAU
OCS-1256	135° 51' 40.360" E	135.861211	4° 0' 58.500" N	4.01625	2.9416	200 NM PALAU
OCS-1257	135° 54' 10.880" E	135.903022	4° 2' 30.678" N	4.041855	2.9417	200 NM PALAU
OCS-1258	135° 56' 40.048" E	135.944458	4° 4' 5.054" N	4.068071	2.9418	200 NM PALAU
OCS-1259	135° 59' 7.833" E	135.985509	4° 5' 41.607" N	4.094891	2.9419	200 NM PALAU
OCS-1260	136° 1' 34.203" E	136.026167	4° 7' 20.317" N	4.12231	2.9420	200 NM PALAU
OCS-1261	136° 3' 59.126" E	136.066424	4° 9' 1.163" N	4.150323	2.9421	200 NM PALAU
OCS-1262	136° 6' 22.572" E	136.10627	4° 10' 44.123" N	4.178923	2.9422	200 NM PALAU
OCS-1263	136° 8' 44.510" E	136.145697	4° 12' 29.176" N	4.208104	2.9423	200 NM PALAU
OCS-1264	136° 11' 4.911" E	136.184697	4° 14' 16.298" N	4.237861	2.9424	200 NM PALAU
OCS-1265	136° 13' 23.743" E	136.223262	4° 16' 5.468" N	4.268186	2.9425	200 NM PALAU
OCS-1266	136° 15' 40.978" E	136.261383	4° 17' 56.662" N	4.299073	2.9427	200 NM PALAU
OCS-1267	136° 17' 56.586" E	136.299052	4° 19' 49.856" N	4.330515	2.9428	200 NM PALAU
OCS-1268	136° 20' 10.539" E	136.336261	4° 21' 45.025" N	4.362507	2.9429	200 NM PALAU
OCS-1269	136° 22' 22.806" E	136.373002	4° 23' 42.147" N	4.395041	2.9430	200 NM PALAU
OCS-1270	136° 24' 33.362" E	136.409267	4° 25' 41.195" N	4.42811	2.0884	200 NM PALAU
OCS-1271	136° 26' 4.764" E	136.434657	4° 27' 7.016" N	4.451949	2.5464	200 NM PALAU
OCS-1272	136° 28' 0.682" E	136.466856	4° 28' 46.649" N	4.479625	0.5265	200 NM PALAU
OCS-1273	136° 28' 24.349" E	136.47343	4° 29' 7.599" N	4.485444	2.2155	200 NM PALAU
OCS-1274	136° 30' 5.205" E	136.501446	4° 30' 34.279" N	4.509522	2.9435	200 NM PALAU
OCS-1275	136° 32' 17.511" E	136.538197	4° 32' 31.387" N	4.542052	2.9436	200 NM PALAU
OCS-1276	136° 34' 28.104" E	136.574473	4° 34' 30.421" N	4.575117	2.9438	200 NM PALAU
OCS-1277	136° 36' 36.957" E	136.610266	4° 36' 31.356" N	4.60871	2.9439	200 NM PALAU
OCS-1278	136° 38' 44.042" E	136.645567	4° 38' 34.167" N	4.642824	2.9440	200 NM PALAU
OCS-1279	136° 40' 49.332" E	136.68037	4° 40' 38.827" N	4.677452	0.0056	200 NM PALAU
OCS-1280	136° 40' 49.569" E	136.680436	4° 40' 39.069" N	4.677519	0.1783	200 NM PALAU
OCS-1281	136° 40' 57.159" E	136.682544	4° 40' 46.621" N	4.679617	2.9442	200 NM PALAU
OCS-1282	136° 43' 0.627" E	136.716841	4° 42' 53.104" N	4.714751	2.9444	200 NM PALAU
OCS-1283	136° 45' 2.248" E	136.750624	4° 45' 1.382" N	4.750384	2.9445	200 NM PALAU
OCS-1284	136° 47' 1.994" E	136.783887	4° 47' 11.429" N	4.786508	2.9447	200 NM PALAU
OCS-1285	136° 48' 59.839" E	136.816622	4° 49' 23.216" N	4.823116	2.9448	200 NM PALAU

OCS-1286	136° 50' 55.760" E	136.848822	4° 51' 36.716" N	4.860199	0.8313	200 NM PALAU
OCS-1287	136° 51' 27.931" E	136.857759	4° 52' 14.876" N	4.870799	2.1137	200 NM PALAU
OCS-1288	136° 52' 49.730" E	136.880481	4° 53' 51.900" N	4.89775	2.9451	200 NM PALAU
OCS-1289	136° 54' 41.726" E	136.911591	4° 56' 8.740" N	4.935761	2.9453	200 NM PALAU
OCS-1290	136° 56' 31.723" E	136.942145	4° 58' 27.206" N	4.974224	0.7088	200 NM PALAU