



Liberté • Égalité • Fraternité
RÉPUBLIQUE FRANÇAISE



The French Continental Shelf

**Partial Submission to the Commission
on the Limits of the Continental Shelf,
pursuant to Article 76, paragraph 8
of the United Nations Convention
on the Law of the Sea in respect of the area of Saint-Pierre-et-Miquelon**

Part 1

Executive Summary

English Translation of the French Original

	Satellite image of Saint-Pierre-et-Miquelon						Light house of Saint-Pierre		
			L'Atalante, oceanographic research vessel of Ifremer						
Cathedral of Saint-Pierre									
							Satellite image of Saint-Pierre		

Table of Content

1	Introduction.....	1
2	The continental shelf.....	1
3	Provisions invoked in this partial submission.....	2
4	Assistance provided by members of the Commission.....	2
5	Relation with other States.....	3
6	Description of the outer limit of the continental shelf.....	4
7	Public Institutes responsible for the preparation of the submission.....	6
	Annex 1 : Outer limit of the continental shelf of Saint-Pierre-et-Miquelon.....	8

Table of illustrations

Figure 1 : The continental margin off Saint-Pierre-et-Miquelon	2
Figure 2 : Fixed points of the outer limit of the continental shelf of Saint-Pierre-et-Miquelon ...	5

List of Tables

Table 1 : List of coordinates defining the outer limit of the continental shelf of Saint-Pierre-et-Miquelon.....	8
--	---

1 Introduction

The Government of the French Republic has the honor to submit to the Commission on the Limits of the Continental Shelf its submission related to the continental shelf of the overseas territory of the Saint-Pierre-et-Miquelon archipelago.

This follows the lodging, by France, with the Secretary General of the United Nations on 8 May 2009 of preliminary information indicative of the outer limits of the continental shelf of Saint-Pierre-et-Miquelon, in accordance with the decision adopted by the Meeting of States Parties and contained in SPLOS/183.

This submission is presented in accordance with Article 76, paragraph 8 of the United Nations Convention on the Law of the Sea to determine, in respect of the overseas territory of Saint-Pierre-et-Miquelon, the outer edge of the continental margin and the outer limit of the continental shelf.

This is a partial submission, in accordance with paragraph 3 of Annex I of the Rules of Procedure of the Commission, additional to a series of partial submissions made by France since 2006 and future submissions.

2 The continental shelf

The continental shelf of Saint-Pierre-et-Miquelon is located on the margin of the central North Atlantic Ocean (Figure 1). This passive continental margin is shared with Canada and the United States of America, and is the result of the separation of North American and African tectonic plates, preceded by a period of rifting initiated during the Triassic.

The sedimentation along the margin off Saint-Pierre-et-Miquelon is strongly influenced by the effect of glaciers and, since at least the Upper Pliocene, by the formation of a delta at the mouth of the Laurentian Channel, which generates significant sediment accumulations at the foot of the slope and in the abyssal plain.

With reference to Article 76, paragraphs 4 to 10 and applying the approach described in the Scientific and Technical Guidelines of the Commission (CLCS/11) leading to the delimitation of the continental shelf, France is able to validate the test of appurtenance, demonstrate natural prolongation and determine the base of the slope.

The French Continental Shelf

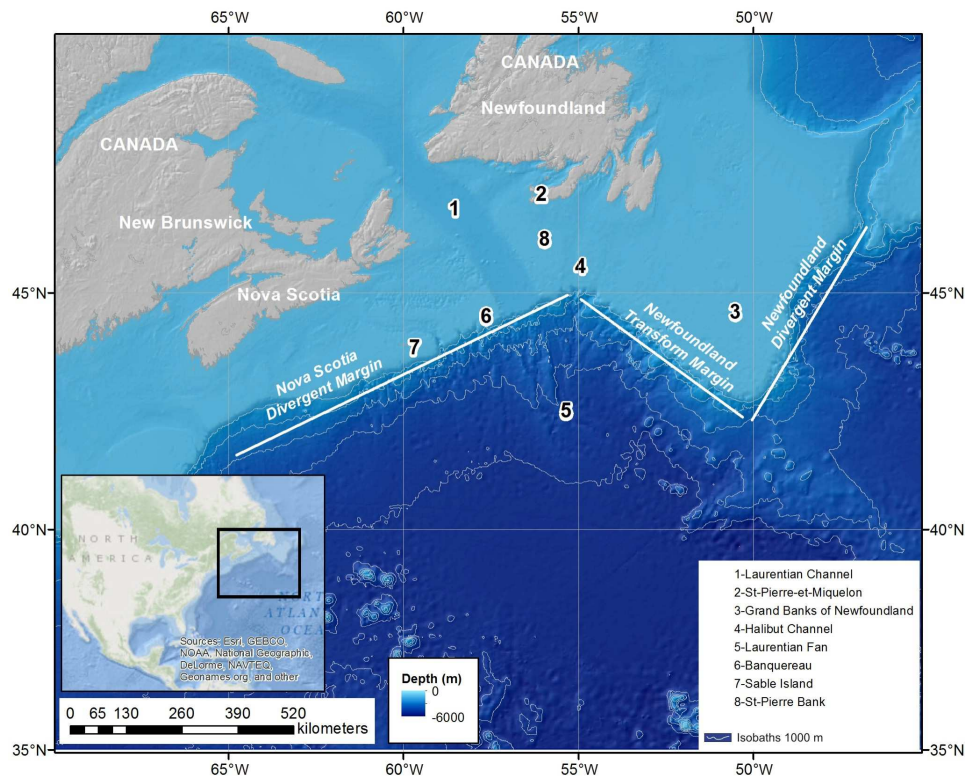


Figure 1 : The continental margin off Saint-Pierre-et-Miquelon
(Passive margin formed during the opening of the central North Atlantic Ocean)

3 Provisions invoked in this partial submission

The outer limit of the continental shelf described in this document is based on the provisions of Article 76, paragraphs 1, 4 (a) (i), 4 (b), 5 and 7 of the Convention.

4 Assistance provided by members of the Commission

Mr. Walter R. Roest, elected to the Commission on the Limits of the Continental Shelf in June 2012, has assisted in the preparation of this submission.

5 Relation with other States

Party to the UN Convention on the Law of the Sea by its ratification on 11 April 1996, France intends to invoke the provisions of Article 76, paragraph 1, which gives the continental shelf the following definition: "*The continental shelf of a coastal State comprises the seabed and subsoil of the submarine areas that extend beyond its territorial sea throughout the natural prolongation of its land territory to the outer edge of the continental margin*". France also intends to invoke the provisions of Article 77 of the Convention which enshrine the rights of the coastal State over the continental shelf. These rights are qualified as sovereign and do not "*depend on occupation, effective or notional, or on any express proclamation*" (Article 77, paragraph 3).

On the basis of these provisions, France has decided to resort to the procedure adopted by the Meeting of States Parties to the Convention in its decision SPLOS/183 of 20 June 2008: On 8 May 2009, by letter addressed to the Secretary-General of the United-Nations, France provided preliminary information indicative of the outer limits of the continental shelf off the archipelago of Saint-Pierre-et-Miquelon.

By diplomatic note dated 9 November 2009 addressed to the Secretary General of the United Nations, Canada has rejected "*any claim by the French Republic to any maritime area, including any areas of continental shelf*" in this region by referring to the decision of the Court of Arbitration dated 10 June 1992 in the "*Case concerning the delimitation of maritime areas between Canada and the French Republic*". France notes that, in this decision, the Court noted that the refusal to rule on a French request for extension "*cannot signify nor may be interpreted as prejudging, accepting or refusing the rights that may be claimed by France [...] to a continental shelf beyond 200 nautical miles*" (§ 80).

Linking the position of Canada and its submission as it relates the region of Nova Scotia, lodged on 6 December 2013 with the Commission on the Limits of the Continental Shelf on the one hand, and this submission from France concerning the extension of the continental shelf off the archipelago of Saint-Pierre-et-Miquelon on the other hand, reveals the existence of a maritime dispute.

The French Continental Shelf

In this context, France endorses, with a view to its application, the provision of the Rules of Procedure of the Commission for this kind of situation : "*In cases where a land or maritime dispute exists, the Commission shall not consider and qualify a submission made by any of the States concerned in the dispute. However, the Commission may consider one or more submissions in the areas under dispute with prior consent given by all States that are parties to such a dispute*" (Rules of Procedure, Annex I, Paragraph 5).

Pending the emergence of such an agreement between the parties, France confirms that there is a maritime dispute, resulting from an overlap of areas of extended continental shelf between Canada and France. It also reiterates its attachment to the rule laid down by the Commission recognizing "*that the competence with respect to matters regarding disputes which may arise in connection with the establishment of the outer limits of the continental shelf rests with States*" (Rules of Procedure, Annex I, Paragraph 1).

6 Description of the outer limit of the continental shelf

The outer edge of the continental margin off Saint-Pierre-et-Miquelon relies on the provisions of paragraph 4 (a) (i) of Article 76 (Gardiner formula). The points constituting the Gardiner line are located beyond 350 nautical miles from the baselines of Saint-Pierre-et-Miquelon. With reference to paragraph 5 of Article 76, this constraint is the only constraint applied in this submission.

The outer limit of the continental shelf in the area that is the subject of this submission finally consists of 184 fixed points defined by coordinates of latitude and longitude connected by straight lines not exceeding 60 nautical miles in length, and located on the line of 350 nautical miles from the baselines from which the breadth of the territorial sea of Saint-Pierre-et-Miquelon is measured (Figure 2 and Table 1).

The French Continental Shelf

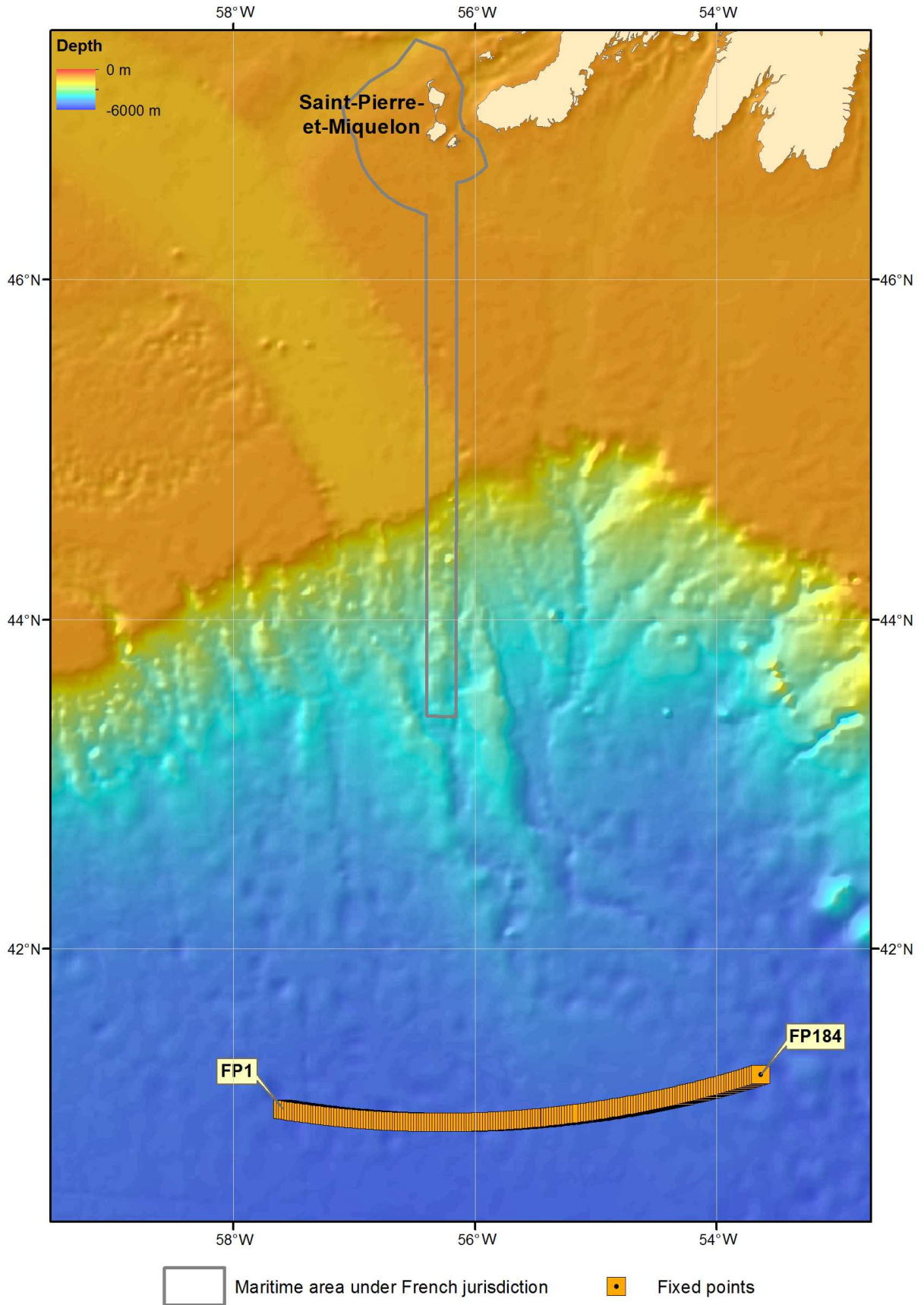


Figure 2 : Fixed points of the outer limit of the continental shelf of Saint-Pierre-et-Miquelon

(Projection Mercator, Bathymetry Etopo)

7 Public Institutes responsible for the preparation of the submission

EXTRAPLAC is a multi-year national program for the extension of the continental shelf, funded by the French government and executed by a consortium composed of the French Research Institute for Exploitation of the Sea (Ifremer), the Hydrographic and Oceanographic Service of the Navy (SHOM), IFP Energies Nouvelles (IFPEN) and the French Polar Institute Paul Emile Victor (IPEV), coordinated by the General Secretariat of the Sea.

The French Continental Shelf

The French Continental Shelf

Annex 1 : Outer limit of the continental shelf of Saint-Pierre-et-Miquelon

Table 1 : List of coordinates defining the outer limit of the continental shelf of Saint-Pierre-et-Miquelon

All coordinates are expressed in degrees in the WGS 84 datum

Fixed Point (FP)	Latitude ° N	Longitude ° W	Method, Article 76	From FP	To FP	Distance (meters)	Distance (Miles)
001	40.9991682	57.5905241	Fixed Point at 350M from baselines, 76(5)			0	0.000
002	40.9990669	57.5897121	Fixed Point at 350M from baselines, 76(5)	001	002	69	0.037
003	40.9964051	57.5680213	Fixed Point at 350M from baselines, 76(5)	002	003	1849	0.998
004	40.9937859	57.5463222	Fixed Point at 350M from baselines, 76(5)	003	004	1849	0.998
005	40.9912094	57.5246151	Fixed Point at 350M from baselines, 76(5)	004	005	1849	0.998
006	40.9886755	57.5029002	Fixed Point at 350M from baselines, 76(5)	005	006	1849	0.998
007	40.9861844	57.4811774	Fixed Point at 350M from baselines, 76(5)	006	007	1849	0.998
008	40.9837359	57.4594470	Fixed Point at 350M from baselines, 76(5)	007	008	1849	0.998
009	40.9813302	57.4377091	Fixed Point at 350M from baselines, 76(5)	008	009	1849	0.998
010	40.9789672	57.4159638	Fixed Point at 350M from baselines, 76(5)	009	010	1849	0.998
011	40.9766469	57.3942112	Fixed Point at 350M from baselines, 76(5)	010	011	1849	0.998
012	40.9743694	57.3724516	Fixed Point at 350M from baselines, 76(5)	011	012	1849	0.998
013	40.9721346	57.3506849	Fixed Point at 350M from baselines, 76(5)	012	013	1849	0.998
014	40.9699427	57.3289115	Fixed Point at 350M from baselines, 76(5)	013	014	1849	0.998
015	40.9677936	57.3071313	Fixed Point at 350M from baselines, 76(5)	014	015	1849	0.998
016	40.9656872	57.2853445	Fixed Point at 350M from baselines, 76(5)	015	016	1849	0.998
017	40.9636237	57.2635513	Fixed Point at 350M from baselines, 76(5)	016	017	1849	0.998

The French Continental Shelf

Fixed Point (FP)	Latitude ° N	Longitude ° W	Method, Article 76	From FP	To FP	Distance (meters)	Distance (Miles)
018	40.9616031	57.2417518	Fixed Point at 350M from baselines, 76(5)	017	018	1849	0.998
019	40.9596253	57.2199461	Fixed Point at 350M from baselines, 76(5)	018	019	1849	0.998
020	40.9576903	57.1981343	Fixed Point at 350M from baselines, 76(5)	019	020	1849	0.998
021	40.9557983	57.1763166	Fixed Point at 350M from baselines, 76(5)	020	021	1849	0.998
022	40.9539491	57.1544932	Fixed Point at 350M from baselines, 76(5)	021	022	1849	0.998
023	40.9521428	57.1326641	Fixed Point at 350M from baselines, 76(5)	022	023	1849	0.998
024	40.9503795	57.1108295	Fixed Point at 350M from baselines, 76(5)	023	024	1849	0.998
025	40.9486590	57.0889895	Fixed Point at 350M from baselines, 76(5)	024	025	1849	0.998
026	40.9469815	57.0671442	Fixed Point at 350M from baselines, 76(5)	025	026	1849	0.998
027	40.9453470	57.0452939	Fixed Point at 350M from baselines, 76(5)	026	027	1849	0.998
028	40.9437554	57.0234385	Fixed Point at 350M from baselines, 76(5)	027	028	1849	0.998
029	40.9422068	57.0015783	Fixed Point at 350M from baselines, 76(5)	028	029	1849	0.998
030	40.9407011	56.9797134	Fixed Point at 350M from baselines, 76(5)	029	030	1849	0.998
031	40.9392385	56.9578439	Fixed Point at 350M from baselines, 76(5)	030	031	1849	0.998
032	40.9378188	56.9359700	Fixed Point at 350M from baselines, 76(5)	031	032	1849	0.998
033	40.9364421	56.9140917	Fixed Point at 350M from baselines, 76(5)	032	033	1849	0.998
034	40.9351084	56.8922092	Fixed Point at 350M from baselines, 76(5)	033	034	1849	0.998
035	40.9338178	56.8703227	Fixed Point at 350M from baselines, 76(5)	034	035	1849	0.998
036	40.9325702	56.8484323	Fixed Point at 350M from baselines, 76(5)	035	036	1849	0.998
037	40.9313656	56.8265381	Fixed Point at 350M from baselines, 76(5)	036	037	1849	0.998
038	40.9302041	56.8046402	Fixed Point at 350M from baselines, 76(5)	037	038	1849	0.998
039	40.9290856	56.7827388	Fixed Point at 350M from baselines, 76(5)	038	039	1849	0.998

The French Continental Shelf

Fixed Point (FP)	Latitude ° N	Longitude ° W	Method, Article 76	From FP	To FP	Distance (meters)	Distance (Miles)
040	40.9280101	56.7608341	Fixed Point at 350M from baselines, 76(5)	039	040	1849	0.998
041	40.9269778	56.7389261	Fixed Point at 350M from baselines, 76(5)	040	041	1849	0.998
042	40.9259885	56.7170149	Fixed Point at 350M from baselines, 76(5)	041	042	1849	0.998
043	40.9250423	56.6951008	Fixed Point at 350M from baselines, 76(5)	042	043	1849	0.998
044	40.9241391	56.6731838	Fixed Point at 350M from baselines, 76(5)	043	044	1849	0.998
045	40.9232791	56.6512641	Fixed Point at 350M from baselines, 76(5)	044	045	1849	0.998
046	40.9224621	56.6293418	Fixed Point at 350M from baselines, 76(5)	045	046	1849	0.998
047	40.9216883	56.6074170	Fixed Point at 350M from baselines, 76(5)	046	047	1849	0.998
048	40.9209575	56.5854900	Fixed Point at 350M from baselines, 76(5)	047	048	1849	0.998
049	40.9202699	56.5635607	Fixed Point at 350M from baselines, 76(5)	048	049	1849	0.998
050	40.9196253	56.5416294	Fixed Point at 350M from baselines, 76(5)	049	050	1849	0.998
051	40.9190239	56.5196962	Fixed Point at 350M from baselines, 76(5)	050	051	1849	0.998
052	40.9184656	56.4977611	Fixed Point at 350M from baselines, 76(5)	051	052	1849	0.998
053	40.9179504	56.4758244	Fixed Point at 350M from baselines, 76(5)	052	053	1849	0.998
054	40.9174784	56.4538862	Fixed Point at 350M from baselines, 76(5)	053	054	1849	0.998
055	40.9170495	56.4319466	Fixed Point at 350M from baselines, 76(5)	054	055	1849	0.998
056	40.9166637	56.4100058	Fixed Point at 350M from baselines, 76(5)	055	056	1849	0.998
057	40.9163210	56.3880638	Fixed Point at 350M from baselines, 76(5)	056	057	1849	0.998
058	40.9160215	56.3661208	Fixed Point at 350M from baselines, 76(5)	057	058	1849	0.998
059	40.9157651	56.3441770	Fixed Point at 350M from baselines, 76(5)	058	059	1849	0.998
060	40.9155519	56.3222325	Fixed Point at 350M from baselines, 76(5)	059	060	1849	0.998
061	40.9153818	56.3002873	Fixed Point at 350M from baselines, 76(5)	060	061	1849	0.998

The French Continental Shelf

Fixed Point (FP)	Latitude ° N	Longitude ° W	Method, Article 76	From FP	To FP	Distance (meters)	Distance (Miles)
062	40.9152549	56.2783417	Fixed Point at 350M from baselines, 76(5)	061	062	1849	0.998
063	40.9151710	56.2563958	Fixed Point at 350M from baselines, 76(5)	062	063	1849	0.998
064	40.9151304	56.2344497	Fixed Point at 350M from baselines, 76(5)	063	064	1849	0.998
065	40.9151329	56.2125035	Fixed Point at 350M from baselines, 76(5)	064	065	1849	0.998
066	40.9151785	56.1905574	Fixed Point at 350M from baselines, 76(5)	065	066	1849	0.998
067	40.9152672	56.1686115	Fixed Point at 350M from baselines, 76(5)	066	067	1849	0.998
068	40.9153992	56.1466659	Fixed Point at 350M from baselines, 76(5)	067	068	1849	0.998
069	40.9155742	56.1247209	Fixed Point at 350M from baselines, 76(5)	068	069	1849	0.998
070	40.9157924	56.1027764	Fixed Point at 350M from baselines, 76(5)	069	070	1849	0.998
071	40.9160537	56.0808326	Fixed Point at 350M from baselines, 76(5)	070	071	1849	0.998
072	40.9163582	56.0588898	Fixed Point at 350M from baselines, 76(5)	071	072	1849	0.998
073	40.9167058	56.0369479	Fixed Point at 350M from baselines, 76(5)	072	073	1849	0.998
074	40.9170965	56.0150072	Fixed Point at 350M from baselines, 76(5)	073	074	1849	0.998
075	40.9175304	55.9930678	Fixed Point at 350M from baselines, 76(5)	074	075	1849	0.998
076	40.9180074	55.9711297	Fixed Point at 350M from baselines, 76(5)	075	076	1849	0.998
077	40.9185276	55.9491932	Fixed Point at 350M from baselines, 76(5)	076	077	1849	0.998
078	40.9190908	55.9272584	Fixed Point at 350M from baselines, 76(5)	077	078	1849	0.998
079	40.9196972	55.9053254	Fixed Point at 350M from baselines, 76(5)	078	079	1849	0.998
080	40.9203467	55.8833943	Fixed Point at 350M from baselines, 76(5)	079	080	1849	0.998
081	40.9210393	55.8614653	Fixed Point at 350M from baselines, 76(5)	080	081	1849	0.998
082	40.9217750	55.8395385	Fixed Point at 350M from baselines, 76(5)	081	082	1849	0.998
083	40.9225538	55.8176140	Fixed Point at 350M from baselines, 76(5)	082	083	1849	0.998

The French Continental Shelf

Fixed Point (FP)	Latitude ° N	Longitude ° W	Method, Article 76	From FP	To FP	Distance (meters)	Distance (Miles)
084	40.9233757	55.7956920	Fixed Point at 350M from baselines, 76(5)	083	084	1849	0.998
085	40.9242407	55.7737726	Fixed Point at 350M from baselines, 76(5)	084	085	1849	0.998
086	40.9251488	55.7518559	Fixed Point at 350M from baselines, 76(5)	085	086	1849	0.998
087	40.9260999	55.7299421	Fixed Point at 350M from baselines, 76(5)	086	087	1849	0.998
088	40.9270942	55.7080313	Fixed Point at 350M from baselines, 76(5)	087	088	1849	0.998
089	40.9281315	55.6861237	Fixed Point at 350M from baselines, 76(5)	088	089	1849	0.998
090	40.9292119	55.6642193	Fixed Point at 350M from baselines, 76(5)	089	090	1849	0.998
091	40.9303353	55.6423183	Fixed Point at 350M from baselines, 76(5)	090	091	1849	0.998
092	40.9315018	55.6204208	Fixed Point at 350M from baselines, 76(5)	091	092	1849	0.998
093	40.9327113	55.5985271	Fixed Point at 350M from baselines, 76(5)	092	093	1849	0.998
094	40.9339639	55.5766371	Fixed Point at 350M from baselines, 76(5)	093	094	1849	0.998
095	40.9352594	55.5547510	Fixed Point at 350M from baselines, 76(5)	094	095	1849	0.998
096	40.9365980	55.5328691	Fixed Point at 350M from baselines, 76(5)	095	096	1849	0.998
097	40.9379796	55.5109913	Fixed Point at 350M from baselines, 76(5)	096	097	1849	0.998
098	40.9394043	55.4891178	Fixed Point at 350M from baselines, 76(5)	097	098	1849	0.998
099	40.9408719	55.4672489	Fixed Point at 350M from baselines, 76(5)	098	099	1849	0.998
100	40.9423825	55.4453845	Fixed Point at 350M from baselines, 76(5)	099	100	1849	0.998
101	40.9439360	55.4235248	Fixed Point at 350M from baselines, 76(5)	100	101	1849	0.998
102	40.9455325	55.4016700	Fixed Point at 350M from baselines, 76(5)	101	102	1849	0.998
103	40.9471720	55.3798203	Fixed Point at 350M from baselines, 76(5)	102	103	1849	0.998
104	40.9473332	55.3776843	Fixed Point at 350M from baselines, 76(5)	103	104	181	0.098
105	40.9490156	55.3558396	Fixed Point at 350M from baselines, 76(5)	104	105	1849	0.998

The French Continental Shelf

Fixed Point (FP)	Latitude ° N	Longitude ° W	Method, Article 76	From FP	To FP	Distance (meters)	Distance (Miles)
106	40.9507410	55.3340001	Fixed Point at 350M from baselines, 76(5)	105	106	1849	0.998
107	40.9525093	55.3121661	Fixed Point at 350M from baselines, 76(5)	106	107	1849	0.998
108	40.9543205	55.2903376	Fixed Point at 350M from baselines, 76(5)	107	108	1849	0.998
109	40.9561745	55.2685147	Fixed Point at 350M from baselines, 76(5)	108	109	1849	0.998
110	40.9580715	55.2466977	Fixed Point at 350M from baselines, 76(5)	109	110	1849	0.998
111	40.9600114	55.2248866	Fixed Point at 350M from baselines, 76(5)	110	111	1849	0.998
112	40.9619941	55.2030815	Fixed Point at 350M from baselines, 76(5)	111	112	1849	0.998
113	40.9640197	55.1812827	Fixed Point at 350M from baselines, 76(5)	112	113	1849	0.998
114	40.9660881	55.1594901	Fixed Point at 350M from baselines, 76(5)	113	114	1849	0.998
115	40.9681994	55.1377041	Fixed Point at 350M from baselines, 76(5)	114	115	1849	0.998
116	40.9703534	55.1159246	Fixed Point at 350M from baselines, 76(5)	115	116	1849	0.998
117	40.9750732	55.0686769	Fixed Point at 350M from baselines, 76(5)	116	117	4011	2.166
118	40.9772701	55.0469026	Fixed Point at 350M from baselines, 76(5)	117	118	1849	0.998
119	40.9795097	55.0251352	Fixed Point at 350M from baselines, 76(5)	118	119	1849	0.998
120	40.9817920	55.0033747	Fixed Point at 350M from baselines, 76(5)	119	120	1849	0.998
121	40.9841172	54.9816214	Fixed Point at 350M from baselines, 76(5)	120	121	1849	0.998
122	40.9864851	54.9598753	Fixed Point at 350M from baselines, 76(5)	121	122	1849	0.998
123	40.9888957	54.9381367	Fixed Point at 350M from baselines, 76(5)	122	123	1849	0.998
124	40.9913490	54.9164055	Fixed Point at 350M from baselines, 76(5)	123	124	1849	0.998
125	40.9938450	54.8946820	Fixed Point at 350M from baselines, 76(5)	124	125	1849	0.998
126	40.9963837	54.8729663	Fixed Point at 350M from baselines, 76(5)	125	126	1849	0.998
127	40.9989651	54.8512586	Fixed Point at 350M from baselines, 76(5)	126	127	1849	0.998

The French Continental Shelf

Fixed Point (FP)	Latitude ° N	Longitude ° W	Method, Article 76	From FP	To FP	Distance (meters)	Distance (Miles)
128	41.0015891	54.8295588	Fixed Point at 350M from baselines, 76(5)	127	128	1849	0.998
129	41.0042558	54.8078673	Fixed Point at 350M from baselines, 76(5)	128	129	1849	0.998
130	41.0069650	54.7861841	Fixed Point at 350M from baselines, 76(5)	129	130	1849	0.998
131	41.0097169	54.7645094	Fixed Point at 350M from baselines, 76(5)	130	131	1849	0.998
132	41.0125114	54.7428432	Fixed Point at 350M from baselines, 76(5)	131	132	1849	0.998
133	41.0153484	54.7211858	Fixed Point at 350M from baselines, 76(5)	132	133	1849	0.998
134	41.0182280	54.6995372	Fixed Point at 350M from baselines, 76(5)	133	134	1849	0.998
135	41.0211501	54.6778976	Fixed Point at 350M from baselines, 76(5)	134	135	1849	0.998
136	41.0241147	54.6562671	Fixed Point at 350M from baselines, 76(5)	135	136	1849	0.998
137	41.0271218	54.6346459	Fixed Point at 350M from baselines, 76(5)	136	137	1849	0.998
138	41.0301714	54.6130341	Fixed Point at 350M from baselines, 76(5)	137	138	1849	0.998
139	41.0332634	54.5914317	Fixed Point at 350M from baselines, 76(5)	138	139	1849	0.998
140	41.0363979	54.5698391	Fixed Point at 350M from baselines, 76(5)	139	140	1849	0.998
141	41.0395748	54.5482562	Fixed Point at 350M from baselines, 76(5)	140	141	1849	0.998
142	41.0427941	54.5266832	Fixed Point at 350M from baselines, 76(5)	141	142	1849	0.998
143	41.0460557	54.5051203	Fixed Point at 350M from baselines, 76(5)	142	143	1849	0.998
144	41.0493597	54.4835676	Fixed Point at 350M from baselines, 76(5)	143	144	1849	0.998
145	41.0527061	54.4620252	Fixed Point at 350M from baselines, 76(5)	144	145	1849	0.998
146	41.0560947	54.4404932	Fixed Point at 350M from baselines, 76(5)	145	146	1849	0.998
147	41.0595257	54.4189718	Fixed Point at 350M from baselines, 76(5)	146	147	1849	0.998
148	41.0629989	54.3974611	Fixed Point at 350M from baselines, 76(5)	147	148	1849	0.998
149	41.0665144	54.3759613	Fixed Point at 350M from baselines, 76(5)	148	149	1849	0.998

The French Continental Shelf

Fixed Point (FP)	Latitude ° N	Longitude ° W	Method, Article 76	From FP	To FP	Distance (meters)	Distance (Miles)
150	41.0700721	54.3544724	Fixed Point at 350M from baselines, 76(5)	149	150	1849	0.998
151	41.0736720	54.3329947	Fixed Point at 350M from baselines, 76(5)	150	151	1849	0.998
152	41.0773141	54.3115282	Fixed Point at 350M from baselines, 76(5)	151	152	1849	0.998
153	41.0809984	54.2900731	Fixed Point at 350M from baselines, 76(5)	152	153	1849	0.998
154	41.0847248	54.2686295	Fixed Point at 350M from baselines, 76(5)	153	154	1849	0.998
155	41.0884933	54.2471975	Fixed Point at 350M from baselines, 76(5)	154	155	1849	0.998
156	41.0923039	54.2257773	Fixed Point at 350M from baselines, 76(5)	155	156	1849	0.998
157	41.0961566	54.2043690	Fixed Point at 350M from baselines, 76(5)	156	157	1849	0.998
158	41.1000513	54.1829728	Fixed Point at 350M from baselines, 76(5)	157	158	1849	0.998
159	41.1039880	54.1615887	Fixed Point at 350M from baselines, 76(5)	158	159	1849	0.998
160	41.1079667	54.1402170	Fixed Point at 350M from baselines, 76(5)	159	160	1849	0.998
161	41.1119874	54.1188576	Fixed Point at 350M from baselines, 76(5)	160	161	1849	0.998
162	41.1160500	54.0975109	Fixed Point at 350M from baselines, 76(5)	161	162	1849	0.998
163	41.1201546	54.0761768	Fixed Point at 350M from baselines, 76(5)	162	163	1849	0.998
164	41.1243010	54.0548556	Fixed Point at 350M from baselines, 76(5)	163	164	1849	0.998
165	41.1284893	54.0335474	Fixed Point at 350M from baselines, 76(5)	164	165	1849	0.998
166	41.1327195	54.0122522	Fixed Point at 350M from baselines, 76(5)	165	166	1849	0.998
167	41.1369914	53.9909703	Fixed Point at 350M from baselines, 76(5)	166	167	1849	0.998
168	41.1413052	53.9697017	Fixed Point at 350M from baselines, 76(5)	167	168	1849	0.998
169	41.1456607	53.9484467	Fixed Point at 350M from baselines, 76(5)	168	169	1849	0.998
170	41.1500579	53.9272053	Fixed Point at 350M from baselines, 76(5)	169	170	1849	0.998
171	41.1544968	53.9059776	Fixed Point at 350M from baselines, 76(5)	170	171	1849	0.998

The French Continental Shelf

Fixed Point (FP)	Latitude ° N	Longitude ° W	Method, Article 76	From FP	To FP	Distance (meters)	Distance (Miles)
172	41.1589775	53.8847638	Fixed Point at 350M from baselines, 76(5)	171	172	1849	0.998
173	41.1634997	53.8635641	Fixed Point at 350M from baselines, 76(5)	172	173	1849	0.998
174	41.1680636	53.8423785	Fixed Point at 350M from baselines, 76(5)	173	174	1849	0.998
175	41.1726691	53.8212073	Fixed Point at 350M from baselines, 76(5)	174	175	1849	0.998
176	41.1773161	53.8000504	Fixed Point at 350M from baselines, 76(5)	175	176	1849	0.998
177	41.1820047	53.7789081	Fixed Point at 350M from baselines, 76(5)	176	177	1849	0.998
178	41.1867347	53.7577805	Fixed Point at 350M from baselines, 76(5)	177	178	1849	0.998
179	41.1915063	53.7366677	Fixed Point at 350M from baselines, 76(5)	178	179	1849	0.998
180	41.1963193	53.7155699	Fixed Point at 350M from baselines, 76(5)	179	180	1849	0.998
181	41.2011737	53.6944871	Fixed Point at 350M from baselines, 76(5)	180	181	1849	0.998
182	41.2060695	53.6734196	Fixed Point at 350M from baselines, 76(5)	181	182	1849	0.998
183	41.2110066	53.6523674	Fixed Point at 350M from baselines, 76(5)	182	183	1849	0.998
184	41.2157747	53.6322199	Fixed Point at 350M from baselines, 76(5)	183	184	1771	0.956