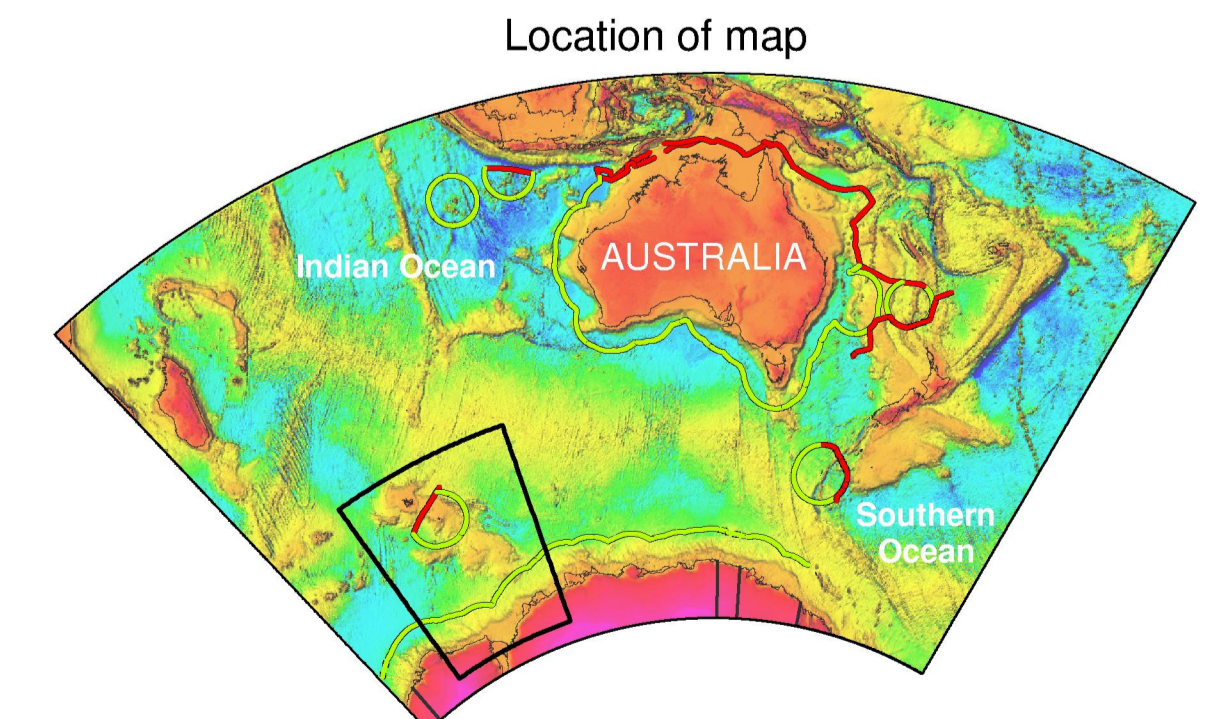
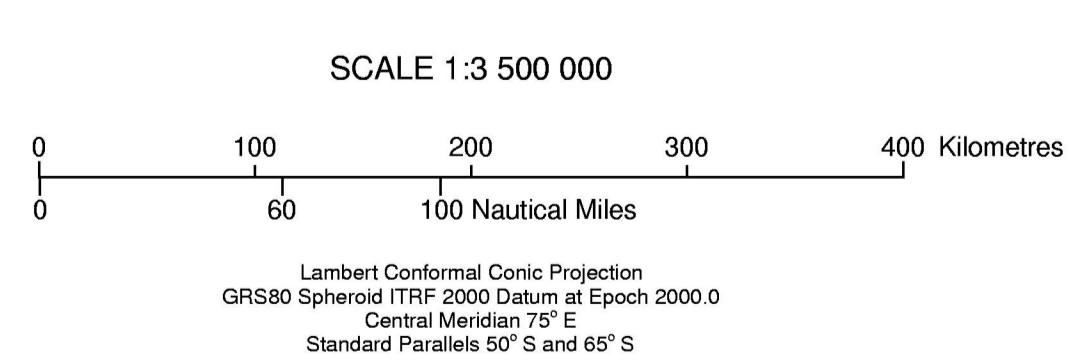
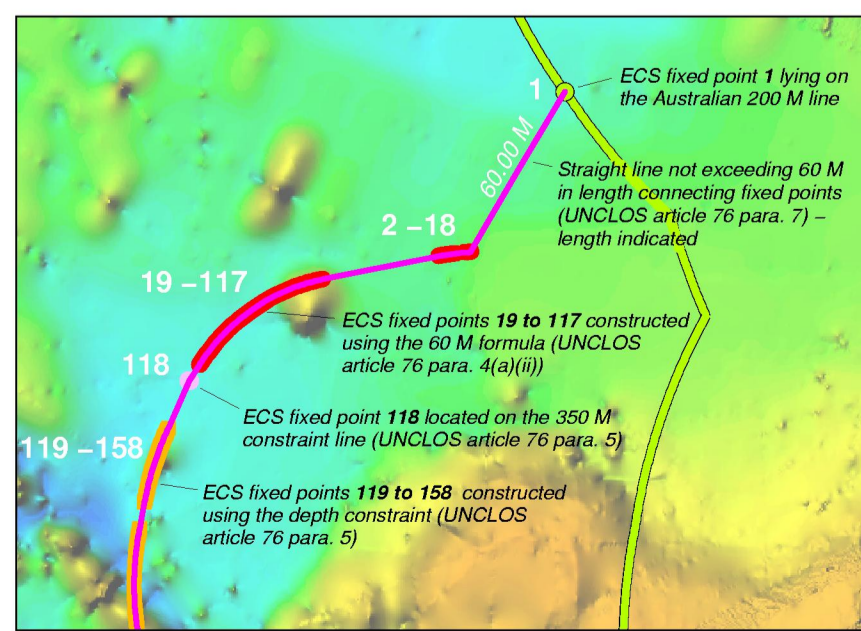
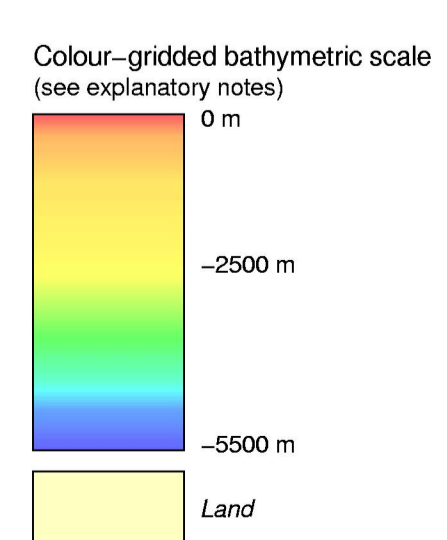


The outer limit of the continental shelf of Australia in the Kerguelen Plateau region showing the provisions of article 76 invoked



- Article 76 fixed points (outer limit)**
- Point on Australia's 200 M line (UNCLOS article 76 para. 7)
 - 60 M formula point (UNCLOS article 76 para. 4(a)(i))
 - 350 M constraint point - point on 350 M constraint arc (UNCLOS article 76 para. 5)
 - Depth constraint point - point on the depth constraint arc (UNCLOS article 76 para. 5)
- Other points**
- ⊕ Point defined in a maritime boundary treaty between Australia and another State
- Lines**
- Australia's territorial sea baseline
 - 200 M line from Australia's territorial sea baseline
 - 60 M formula point (UNCLOS article 76 para. 4(a)(i))
 - Treaty boundary with an opposite or adjacent State
 - Outer limit of extended continental shelf (UNCLOS article 76 para. 7)
- Abbreviations**
- M nautical mile (1852 m)
 - m metres



- Explanatory Notes**
1. This map has been produced in ESRI ArcMap 8.3 using geo-spatially correct data.
 2. The gridded bathymetric image that forms the background of this map was derived from ETOPO2, <http://www.ngdc.noaa.gov/mgg/fliers/01mgg04.html>.
 3. The map depicts the outer limit of the extended continental shelf generated by Heard Island and the McDonald Islands only and does not take account of areas of extended continental shelf generated by other Australian Territory.
 4. Depiction of 200 nautical mile arcs from the territory of States other than Australia is based on information available at the time of production, and should not be taken to signify acceptance or endorsement by Australia of the validity at international law of the non-Australian baselines from which they are drawn.
 5. The term "extended continental shelf" is used to refer to that part of the continental shelf defined under UNCLOS article 76 that lies beyond 200 nautical miles from Australia's territorial sea baseline.
 6. The 1982 Agreement on Maritime Delimitation between the Government of Australia and the Government of the French Republic delimits inter alia the continental shelf and exclusive economic zone boundaries between Heard and McDonald Islands (Australia) on the one hand and of Kerguelen Islands (France) on the other hand.