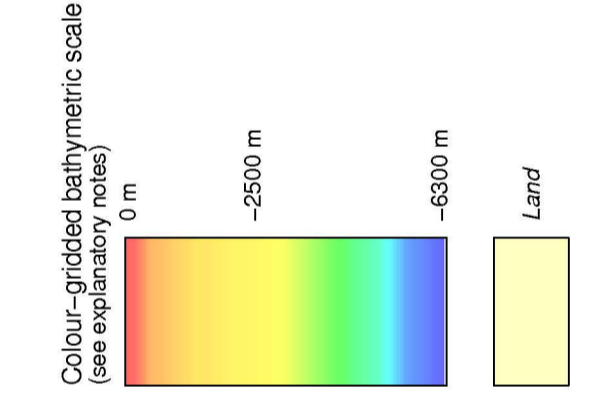
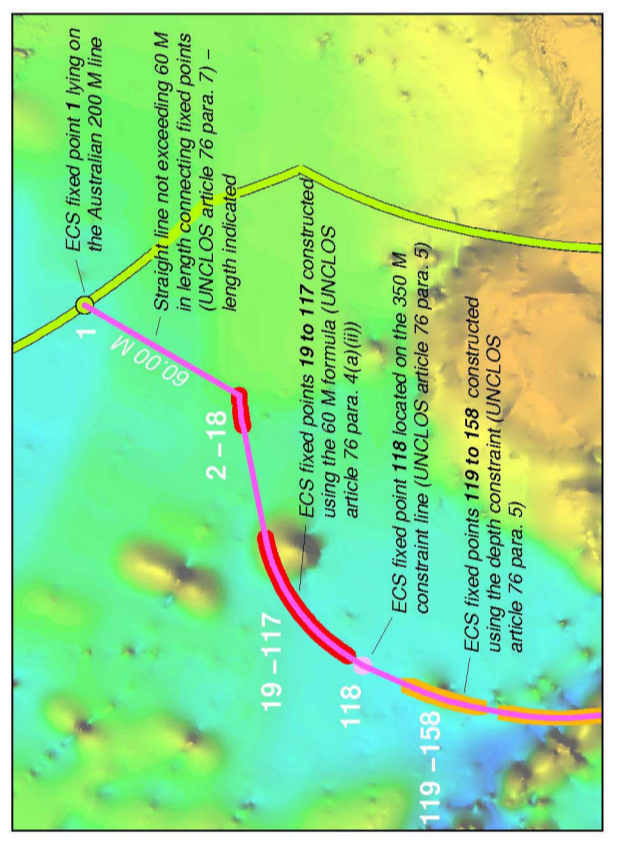
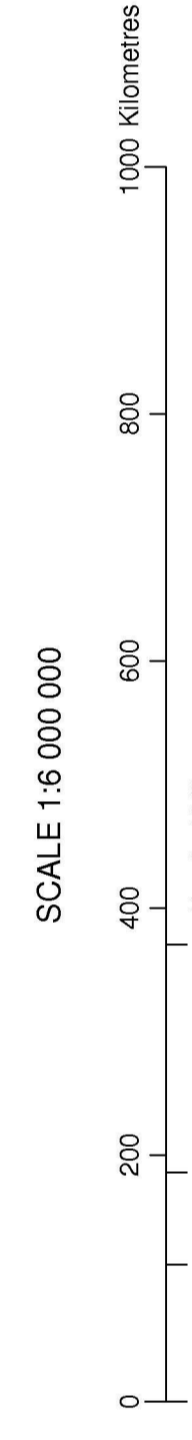


The outer limit of the continental shelf of Australia in the region of the Australian Antarctic Territory showing the provisions of article 76 invoked



- Lines**
- Australia's territorial sea baseline
 - 200 M line from Australia's territorial sea baseline
 - 200 M line from coastline of an opposite article 76 area 4(a)(ii)
 - 200 M line of Australia — an area of potential delimitation (UNCLOS article 76 para. 7)
 - Outer limit of extended continental shelf (UNCLOS article 76 para. 7)
 - Outer limit of continental shelf (UNCLOS article 76 para. 7)
- Other information**
- Land boundary with an adjacent state

- Article 76 fixed points (outer limit)**
- Point on Australia's 200 M line (UNCLOS article 76 para. 4(a)(i))
 - ▲ Segment thickness formula point (UNCLOS article 76 para. 4(a)(ii))
 - 60 M formula point (UNCLOS article 76 para. 4(b)(i))
 - 400 M constant point — equal to 350 M constant arc (UNCLOS article 76 para. 5)
- Abbreviations**
- M nautical mile (1852 m)

- Explanatory Notes**
- This map has been produced in ESI/AviMap 8.3 using geo-spatially corrected data.
 - The colour-coded bathymetric image that forms the background of this map was derived from ETOPO2. <http://www.ngs.noaa.gov/ETOPO2/ETOPO2.html>
 - Location of 200 nautical mile lines from the territory of States other than Australia, and of lines equidistant from Australian land territory and that of another State, is shown in light blue. The map is not to be taken to signify acceptance or endorsement by Australia of the validity of international law of the sea, or of the maritime boundaries of any State, from which they are drawn.
 - The term "extended continental shelf" is used to refer to that part of the continental shelf defined under UNCLOS article 76 that lies beyond 200 nautical miles from the outer limit of the continental shelf.
 - The 200 nautical mile line and extended continental shelf limits have been marked to take account of the fact that maritime boundaries have not been negotiated with States adjacent to the Australian Antarctic Territory. The extent of the marking does not reflect any view with regard to the merits of any delimitation proceedings.