

# Monitoring and Enforcement in Australia

## Standards, MEPS and Labeling

*Michael Grubert*

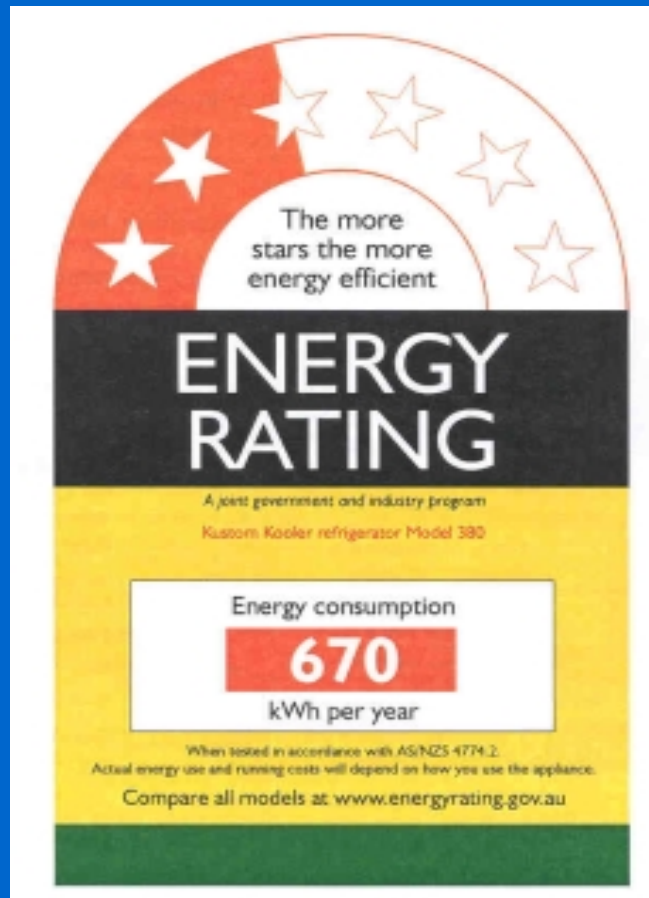
*Office of the Chief Electrical Inspector*

*representing*

*National Appliance and Equipment*

*Energy Efficiency Committee*

# Australian Energy Label



# Australian Program Background

**Appliances Covered:** Refrigerating Appliances

Air Conditioners

Dishwashers

Clothes Dryers

Clothes Washers

Water Heaters (MEPS only)

**Rating System:** Energy Consumption -generally kWh/year  
1 to 6 stars where 6 stars best

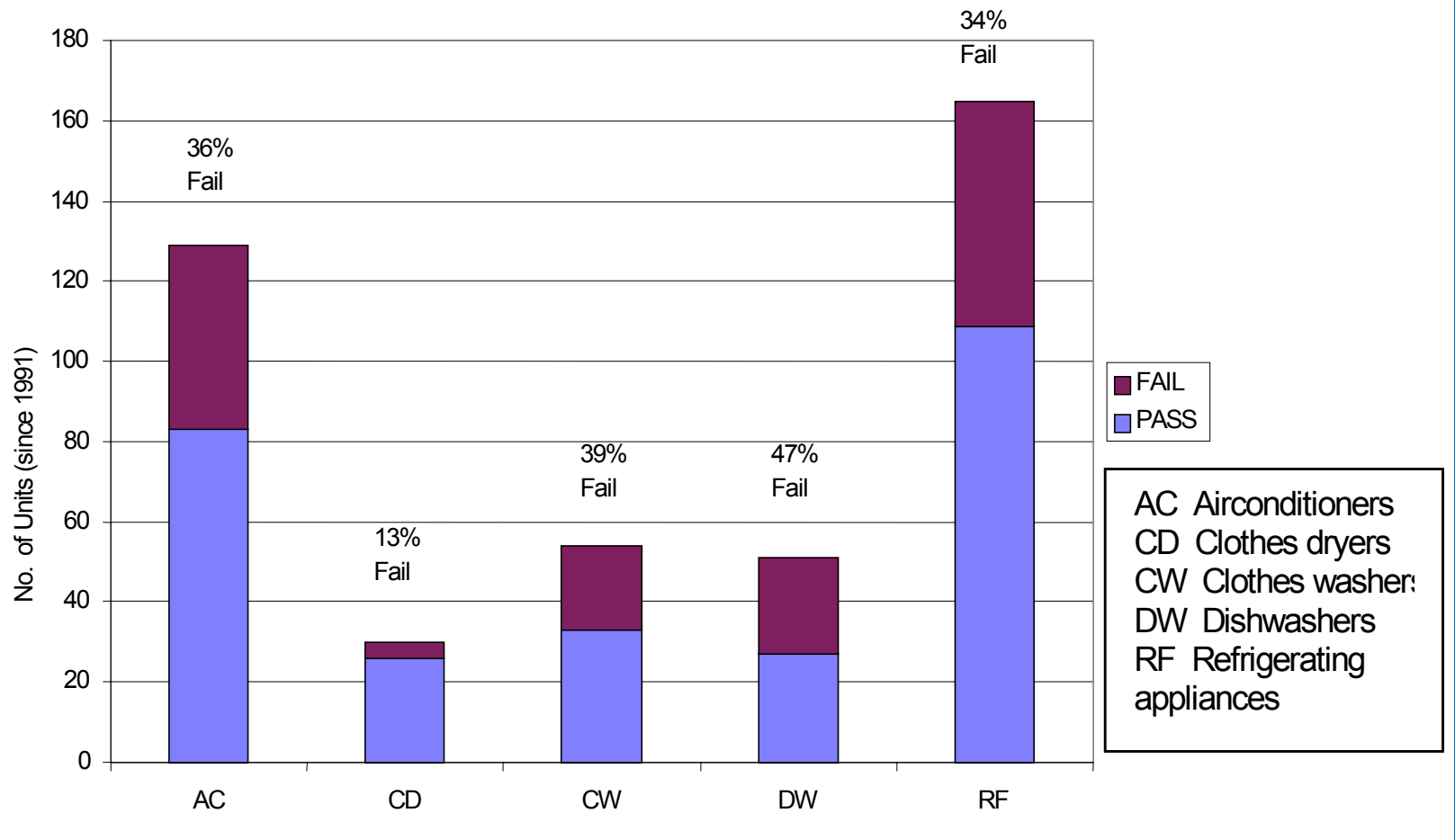
## Australian Program Background

- Australian and New Zealand Minerals & Energy Council (ANZMEC)
- Energy Management Task Force (EMTF)
- National Appliance & Equipment Energy Efficiency Committee (NAEEEC)

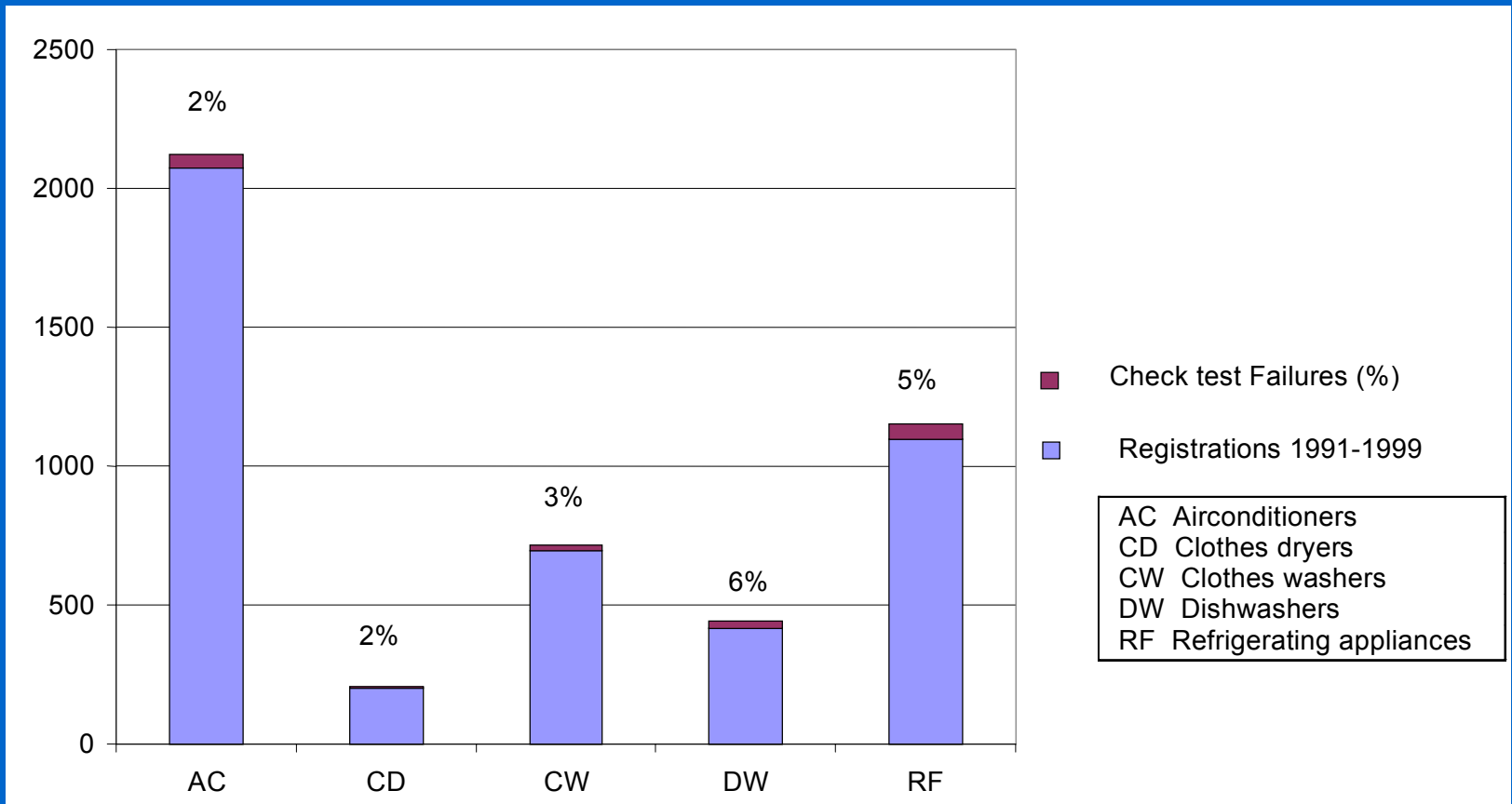
## NAEEEC monitoring and enforcement

- National Appliance Check Testing Program
- National Retail Compliance Audit Program

# Checktesting Program Background



# Checktesting Program Background



# Checktesting Program Background

Year	Total number of appliances approved by regulators	Total number of Check test failures	Percentage of Registrations that failed
1999-2000	624	1 <sup>1</sup>	0.2 %
1998-1999	525	31	5.9 %
1997-1998	668	20	3.0 %
1996-1997	490	28	5.7 %
1995-1996	359	39	10.9 %
1994-1995	386	11	2.8 %
1993-1994	369	14	3.8 %
1992-1993	414	8	1.9 %
1991-1992	322	0	0.0 %

<sup>1</sup>: This low figure resulted from the reduced scope of the check test program in this year.

**Check tested appliance failures as a percentage of total check tests 1991-1999**



# Checktesting Program Design

Three associated strategies:

- Appliance & Equipment Testing
- Round-Robin Testing
- NATA Witness Testing

Administrative Guidelines for Labeling & MEPS  
provide uniformity and consistency

## • Checktesting Program Development

- Risk Assessment Software
- Appliance Group Selection
- Model Selection
- Comparative Studies of Laboratories

# Checktesting Program Implementation

Implemented on behalf of National Committee by:

- Program Manager - Regulator
- Project Manager - Technical Expert

# Checktesting Program Implementation

Outcomes of Checktesting impact on:

- State Regulators
  - cancel approvals
- Manufacturers & Importers
  - stop sales and re-label failed appliances

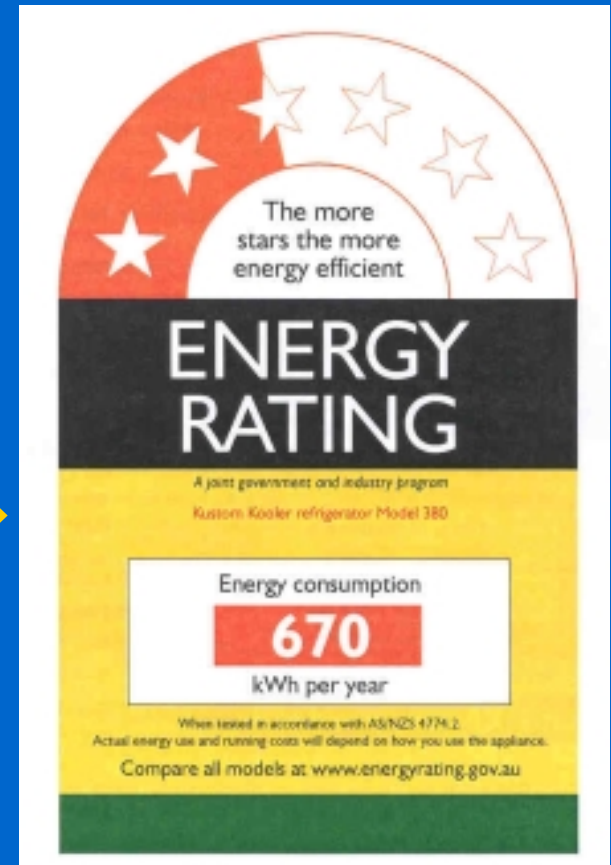
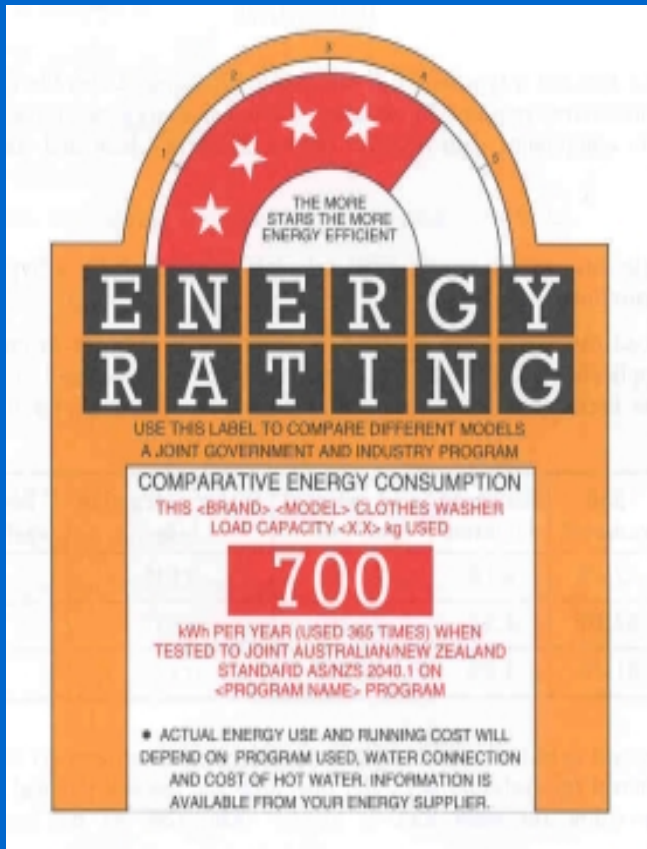
## Checktesting Program Lessons Learned

- Consistency - no ‘forum shopping’
- Communication & Program Profile
- Cost minimization
- On-going Technical Expertise

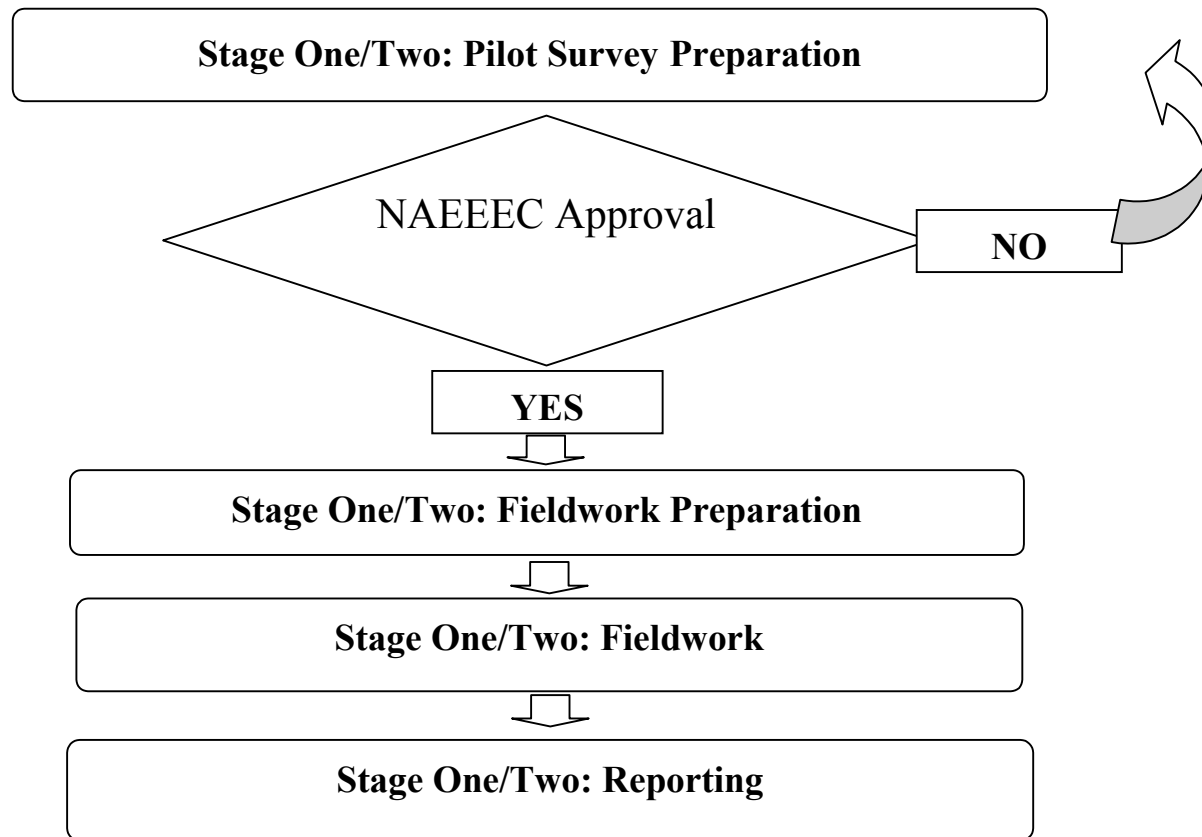
## Label Compliance Program Background

- Individual State programs since 1987
- 1998 study
  - 29 000 appliances in 400 stores
  - 92 per cent compliance
- Energy Efficiency Label change in 2000

# Label Compliance Program Background

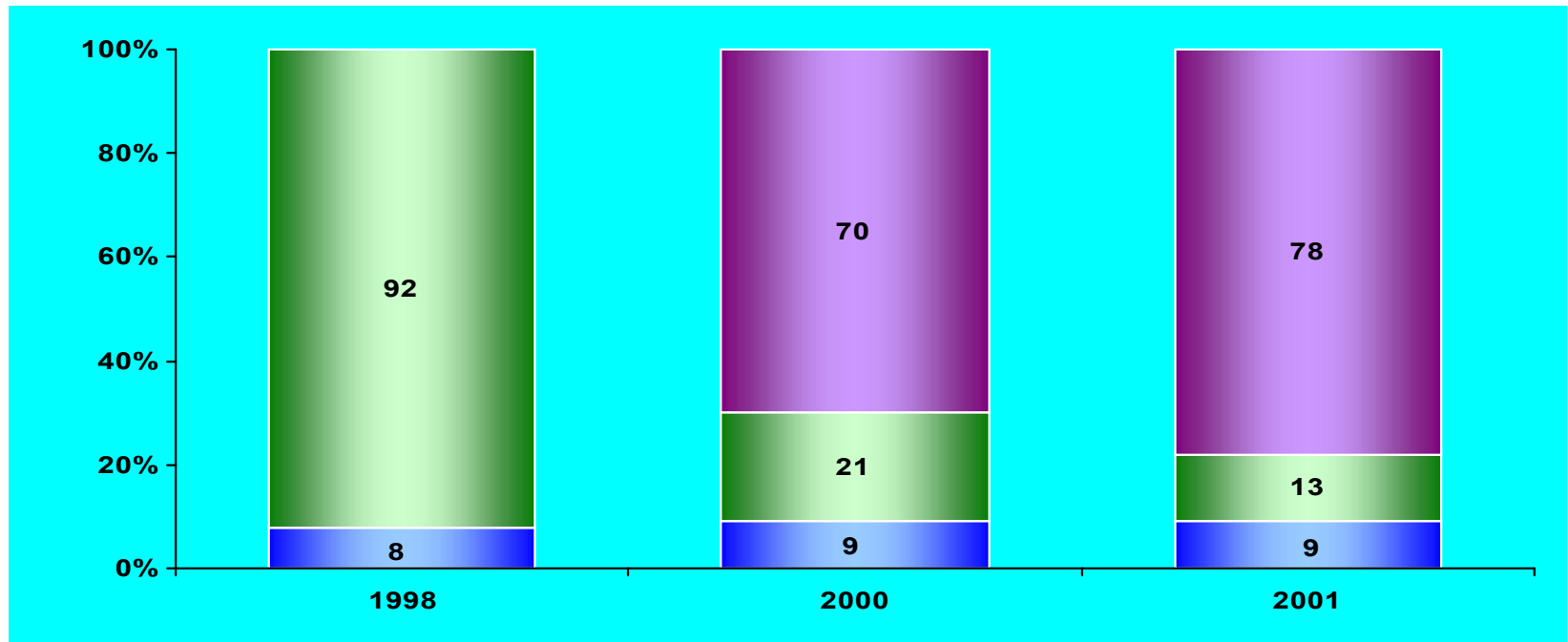


# Label Compliance Program Design





# Label Compliance Program Development



On Display (n):

29,024

14,568

30,805

NEW Label (n):

N/A

10,258

23,977

OLD Label (n):

26,788

2,980

3,991

NO Label (n):

2236

1,330

2,837

# Retail Compliance Program

## Lessons Learned

- Wider scope & Consistency
- Communication & program profile
- Cost minimization
- Benchmarking

## Conclusions

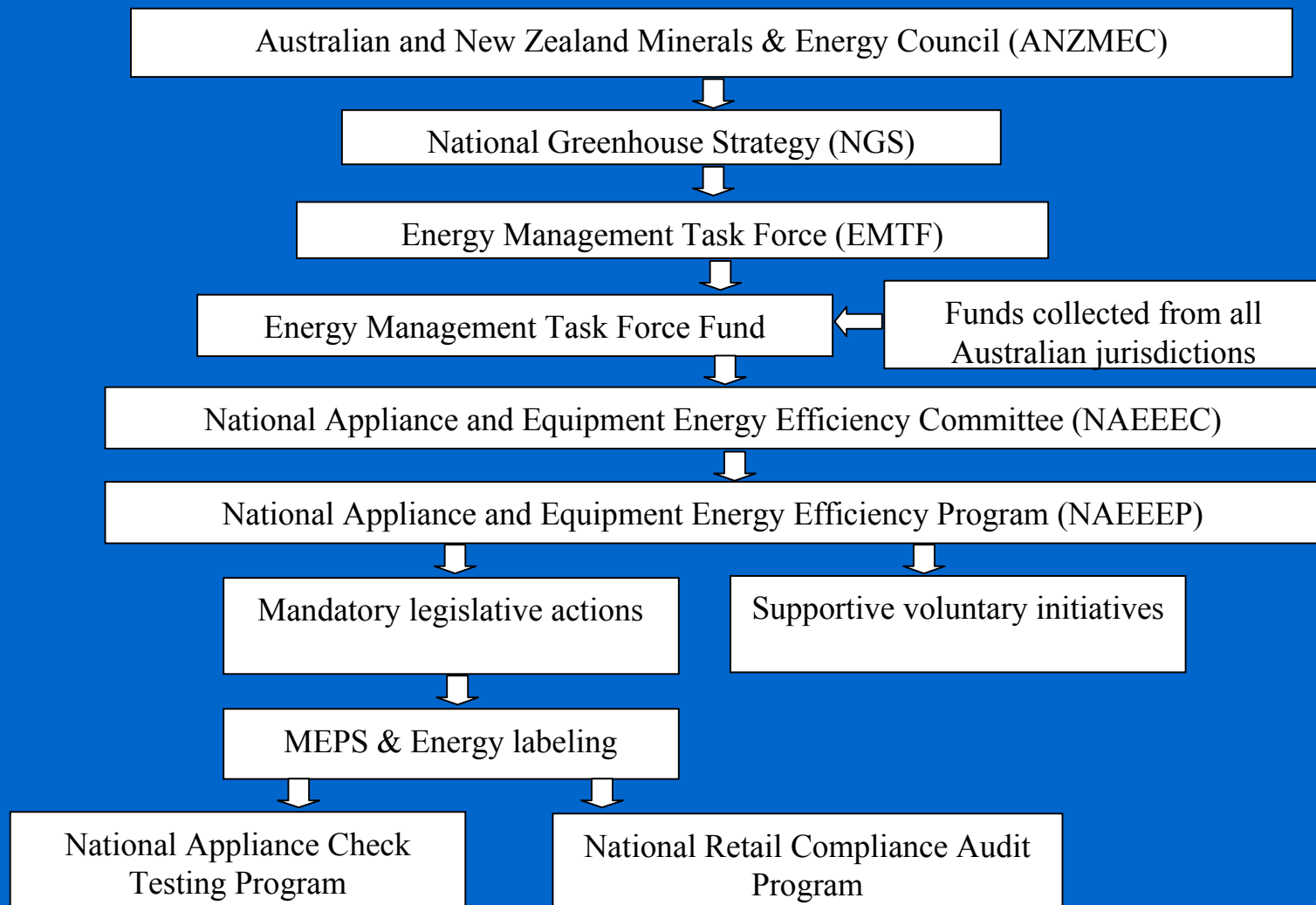
- Checktesting Program - US\$50 000 p.a.
- Label Audit Program - US\$25 000 p.a.

Provides a cost effective monitoring and compliance system to the Australian Energy Labelling Scheme.

# Monitoring and Enforcement in Australia

- [www.energyrating.gov.au](http://www.energyrating.gov.au)

# Australian Program Background



## NAEEEC monitoring and enforcement

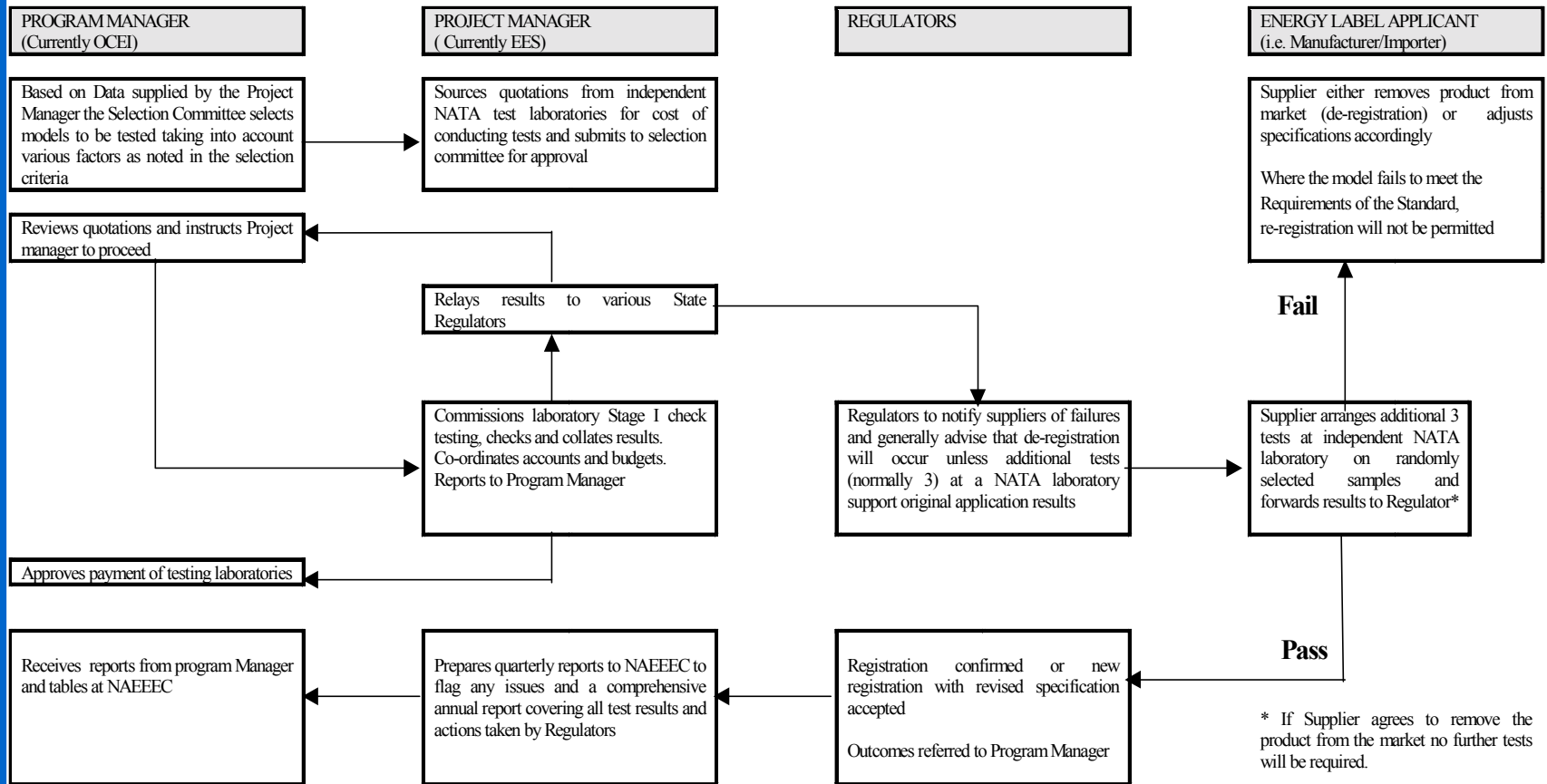
- Sets Standards for labeling & MEPS
- Coordinates State / Territory legislative, regulatory and compliance activity for MEPS and labeling
- Applies legal & administrative sanctions for breach of legislation

# Checktesting Program Implementation

- Stage I checktest - one unit of model
- Result not more than 10 per cent of declaration
- Stage II - three units of model
- Mean not more than 10 per cent of declaration

# Checktesting Program Implementation

## National Check testing Program Management Model

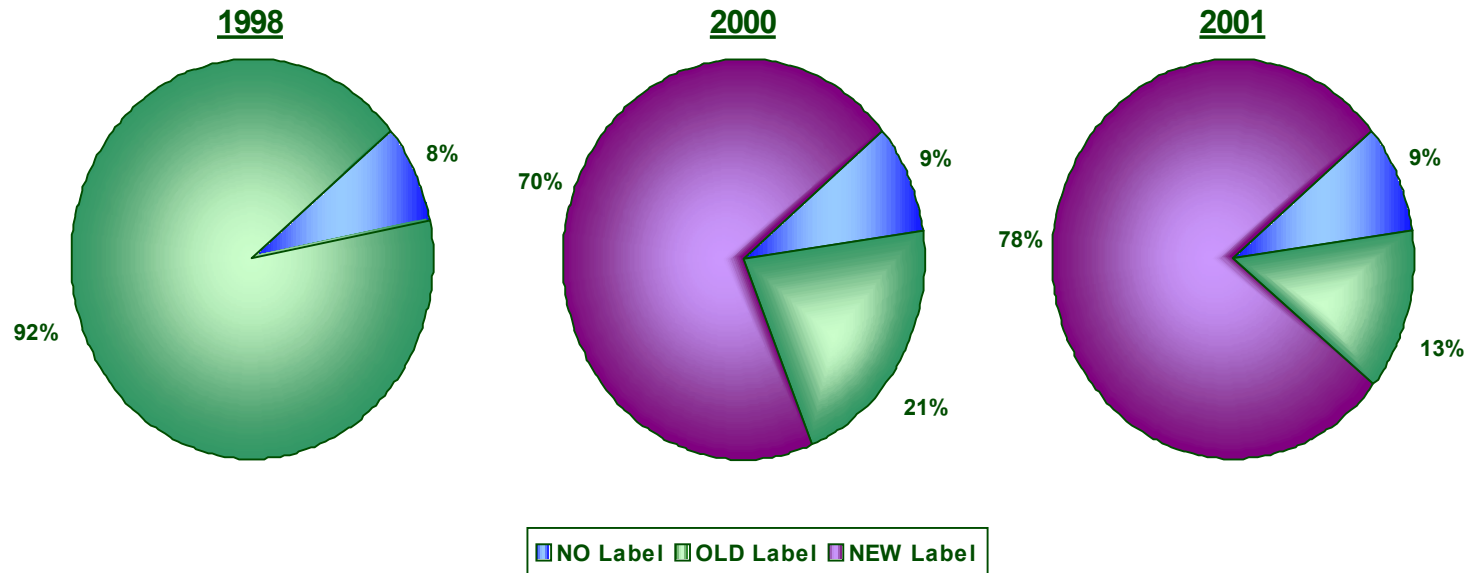




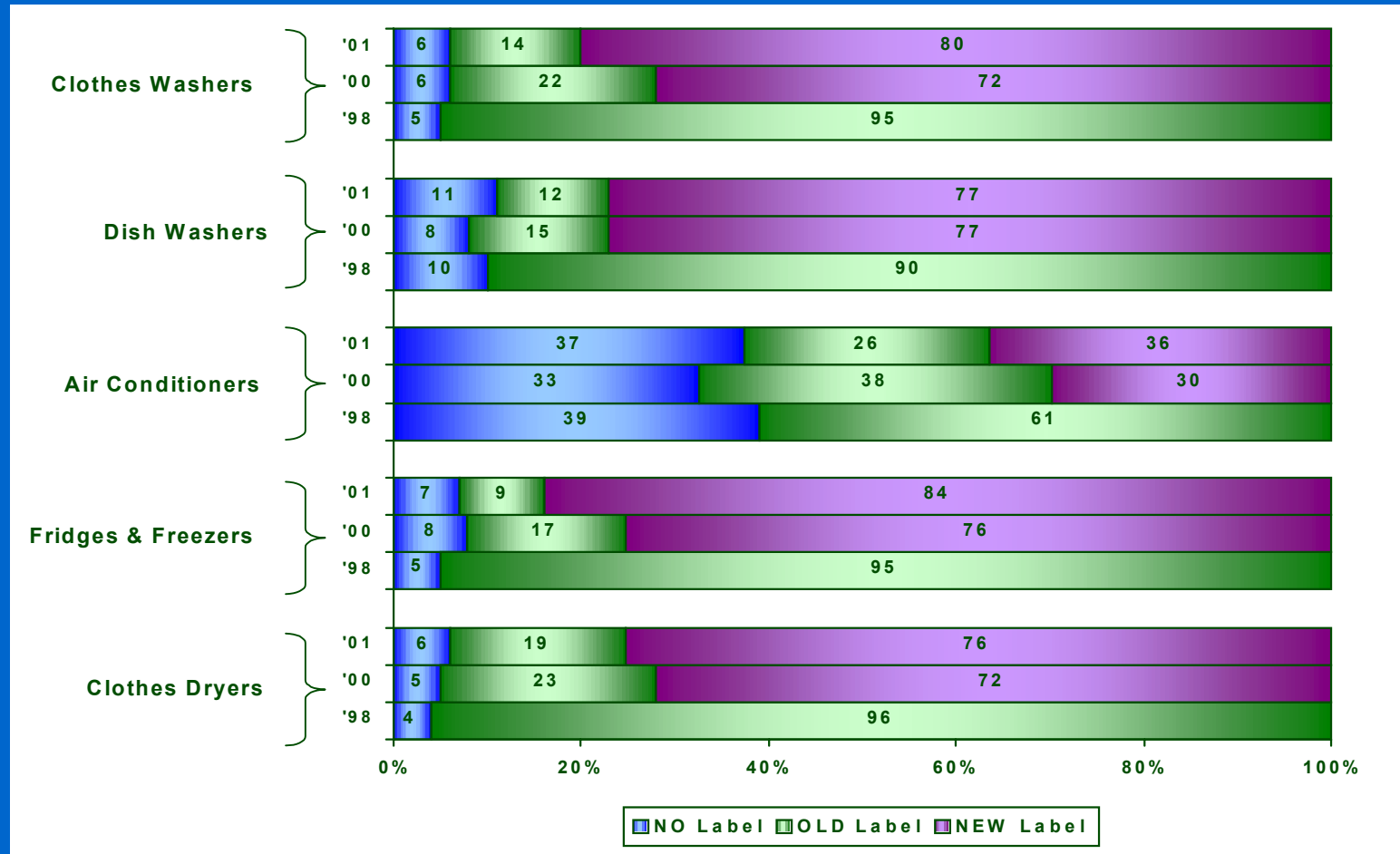
# Label Compliance Program Development

- Shadow Shop Audit
- Mobile Telephone Interview and CATI

# Label Compliance Program Development



# Label Compliance Program Development



# Label Compliance Program Development

Compliance Percentage Range	Number of Stores (1998)	Proportion of Sample (1998)	Number of Stores (2000)	Proportion of Sample (2000)	Number of Stores (2001)	Proportion of Sample (2001)
0-49%	5	1%	23	15%	49	12%
50-69%	15	4%	47	31%	62	15%
70-79%	10	3%	35	23%	92	23%
80-89%	59	15%	34	23%	118	29%
90-100%	311	78%	11	7%	80	20%
<b>Total</b>	<b>400</b>	<b>100%</b>	<b>150</b>	<b>100%</b>	<b>401</b>	<b>100%</b>