



## Case studies and lessons learned from Land degradation and SLM assessment & monitoring in South Africa

Lehman Lindeque  
LADA South Africa

## Expert consultation workshops for LADA-N assessment based on stakeholder analysis and unique provincial structures

- Ensure inter-sectoral and multi-level process
- Ensure representative participation and variety of inputs and opinions

## Best practice assessment and monitoring

- Use World Overview for Conservation Approaches and Technologies (WOCAT) programme as basis.
  - Fully describe and document success stories and failures in conservation and make it available on a global database
  - Select successful generic approaches and technologies, spread the word and develop monitoring techniques and Decision Support Systems to enable implementation thereof

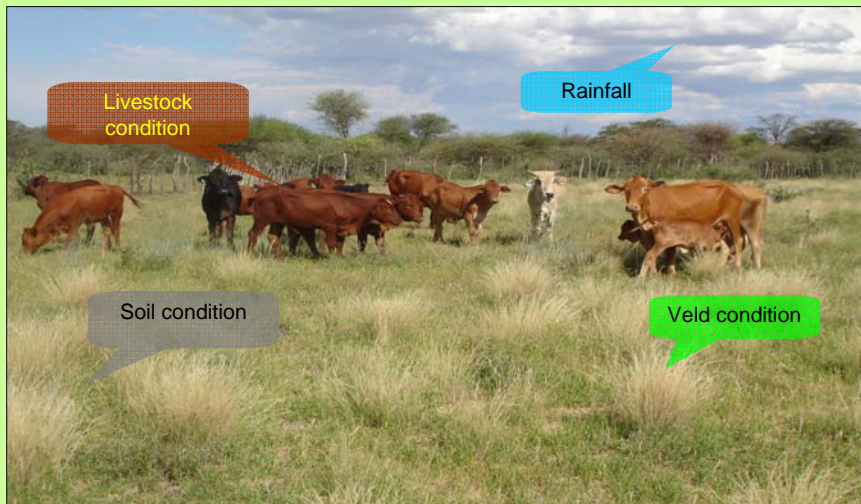
## Conservation agriculture

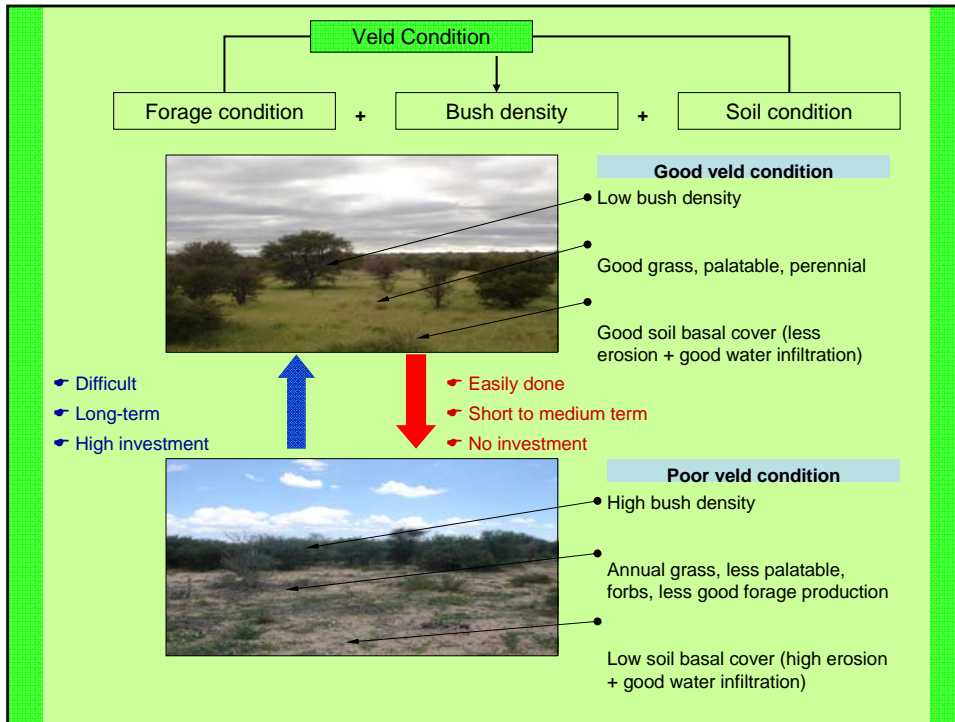


## Animal drawn planter



## Field Reference Guide for holistic rangeland monitoring



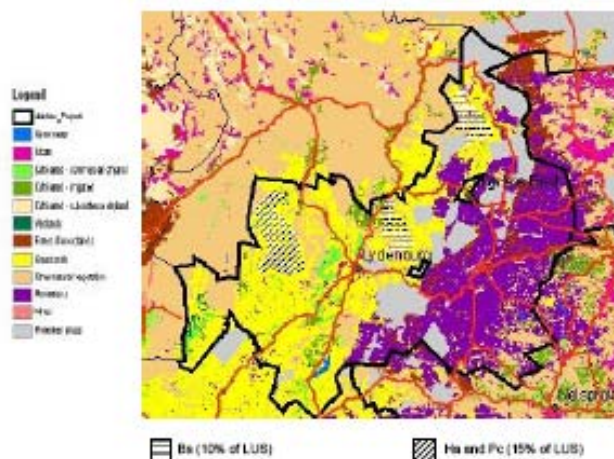




## From degradation and SLM assessment and monitoring to improved decision-making

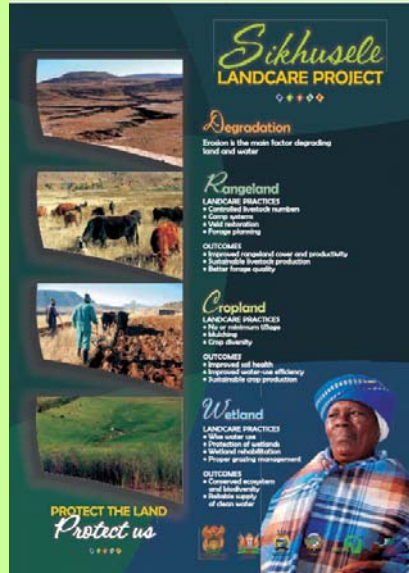
- Local level
  - Practical and successful SLM technologies
  - Lessons learned from local level monitoring – improvement in veld and livestock condition
- Provincial level
  - SLM options from WOCAT questionnaire
  - Pitfalls and leverage points from local level LADA assessments
- National level
  - Identify priority areas from LADA National assessment
  - Multi-level and inter sectoral response based on analysis from DPSIR framework

## Identify priority areas for SLM intervention, where....



*Figure 2: shows the actual different degradation types and combinations (overlaps) within the grassland LUS in the district of Lydenburg (South Africa). In this case 10 % of the LUS is affected by bush encroachment (Bs) and 15 % by aridification (Ha) and compaction (Pc) at the same time. (see also Table 2 on page E18)*

# What and how to do it...



**Sikhusele**  
LANDCARE PROJECT

**Degradation**  
Erosion is the main factor degrading land and water.

**Rangeland**  
LANDCARE PRACTICES  
• Controlled livestock numbers  
• Contour ploughing  
• Water restoration  
• Fencing off areas

**OUTCOMES**  
• Improved rangeland cover and productivity  
• Sustainable livestock production  
• Better forage quality

**Cropland**  
LANDCARE PRACTICES  
• No or minimum tillage  
• Mulching  
• Crop diversity

**OUTCOMES**  
• Improved soil health  
• Improved water use efficiency  
• Sustainable crop production

**Wetland**  
LANDCARE PRACTICES  
• Stable water use  
• Protection of wetlands  
• Wetland rehabilitation  
• Proper grazing management

**OUTCOMES**  
• Increased ecosystem and biodiversity  
• Reliable supply of clean water

PROTECT THE LAND  
*Protect us*

PHOTO: [Small photos of a river, a herd of cattle, a person in a field, and a wetland landscape]

PHOTO: [Portrait of a man in a blue hat and plaid shirt]