

GOALS AND TARGETS

***FOR MONITORING THE PROGRESS OF
YOUTH WELL-BEING***

IN THE GLOBAL ECONOMY:

What Can We Learn From the

Child and Youth Well-Being Index (CWI) Project?

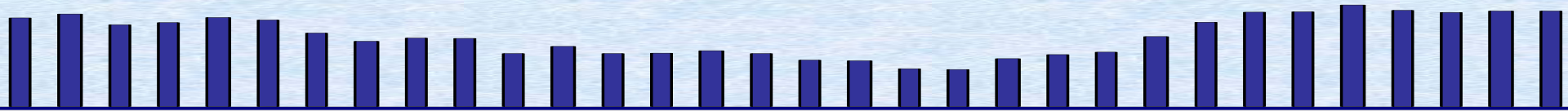
Kenneth C. Land, Ph.D.

Duke University

UN Expert Group Meeting

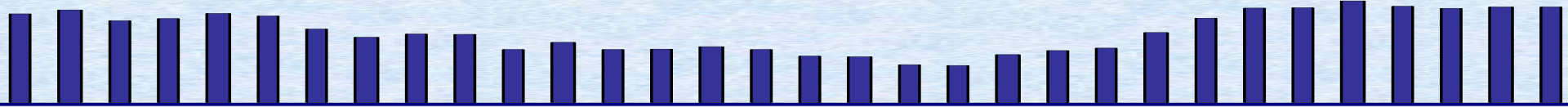
May 30-31, 2007

Research on the Child and Youth Well-Being Index Project is sponsored by the
Foundation for Child Development.



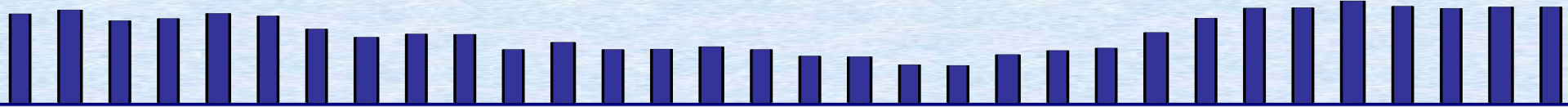
What is the CWI?

- It is a composite measure of trends in the quality of life, or well-being, of America's children and young people since 1975.
- It consists of 28 social indicators organized in seven quality-of-life domains.



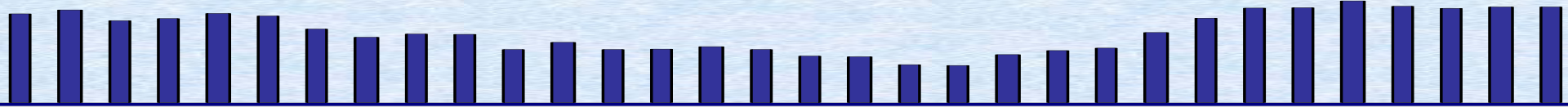
What Does the CWI Tell Us?

- Did overall child and youth well-being in the United States improve or deteriorate over the last two generations?
- By how much?
- In which domains or areas of social life?
- For which age groups?
- For boys and girls equally?
- For which racial and ethnic groups?
- Did disparities between groups increase or decrease?

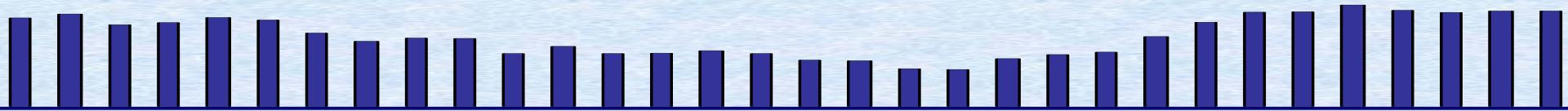


Methods of CWI Construction

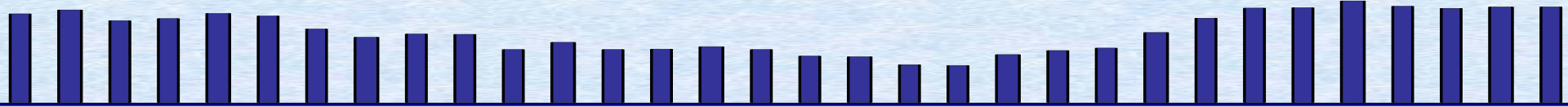
- The CWI places 28 national level indicators into seven quality-of-life domains
 - Family Economic Well-Being
 - Health
 - Safety/Behavioral Concerns
 - Educational Attainment
 - Community Connectedness
 - Social Relationships (with Family and Peers)
 - Emotional/Spiritual Well-Being



- Each of the 28 indicators uses annual time series data from vital statistics and sample surveys
- Each indicator is indexed by percentage change from the base year, 1975.
- The base year is assigned a value of 100.
 - A value greater than 100 in subsequent years means the social condition measured has improved. A value less than 100 means the social condition has deteriorated.



- The 28 indicators are grouped together into seven domains to construct domain-specific summary well-being indices.
 - Within these summary indices, each indicator is equally weighted.
- The seven domain indices are combined into the Child and Youth Well-being Index (CWI).
 - Each domain is equally weighted in the construction of the CWI.



Composite Index of Child and Youth Well-Being

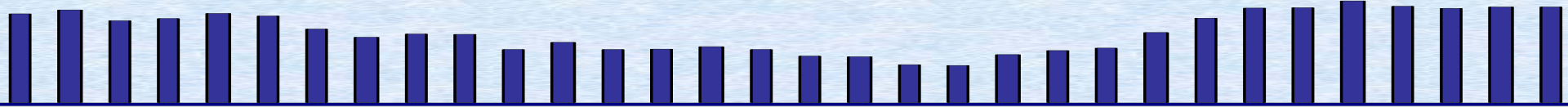
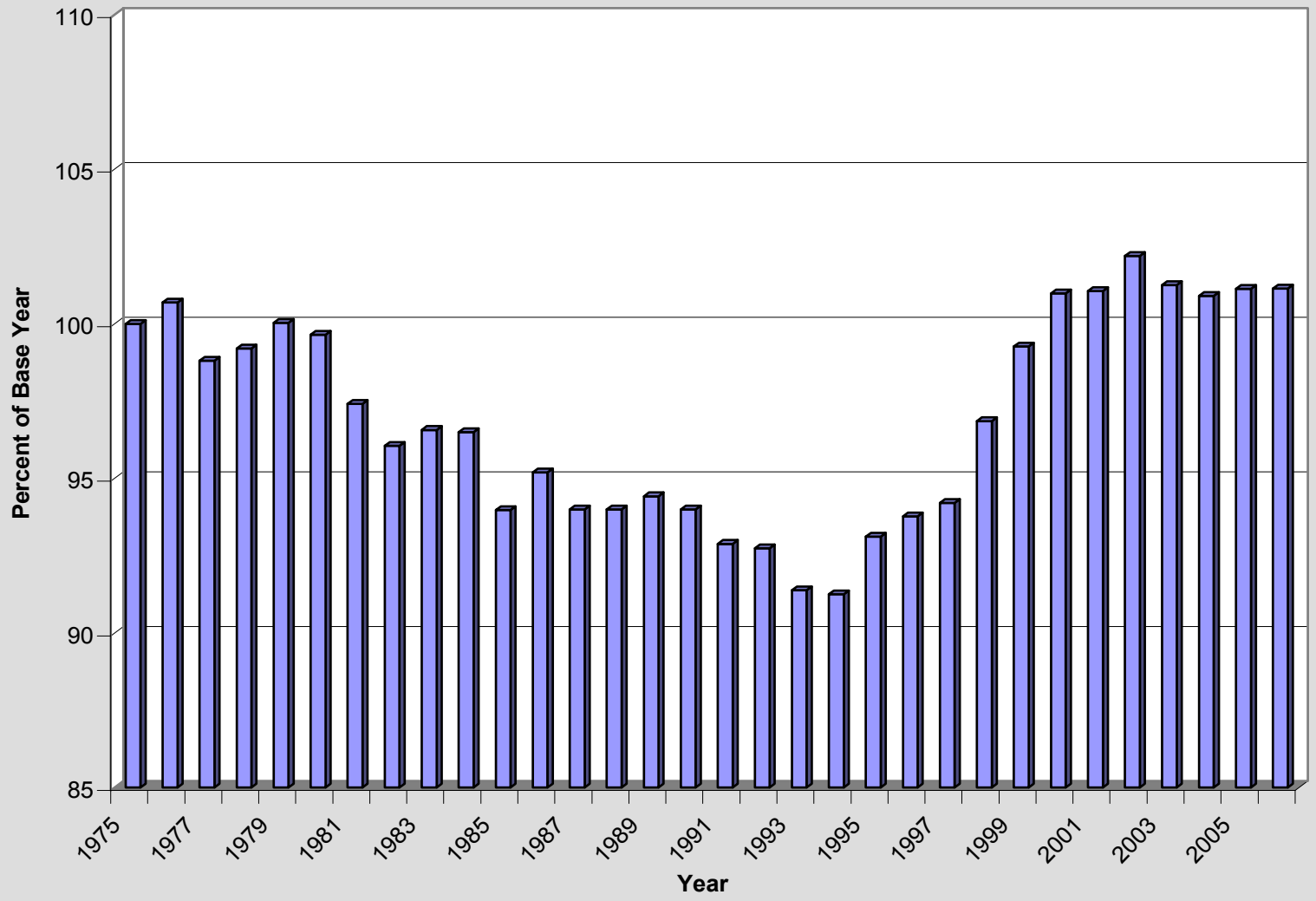
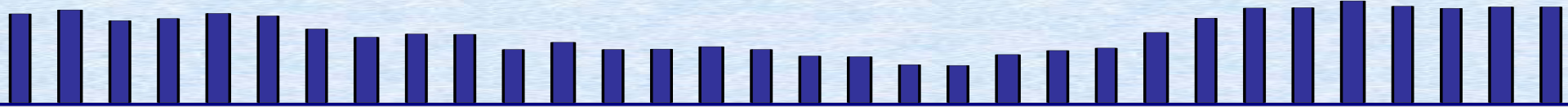


Figure 1: Child Well-Being Index, 1975-2005, with Projections for 2006





Domain-Specific Indices

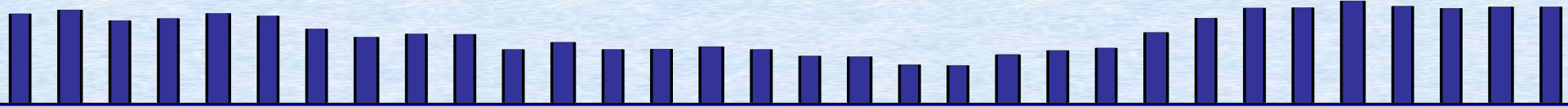
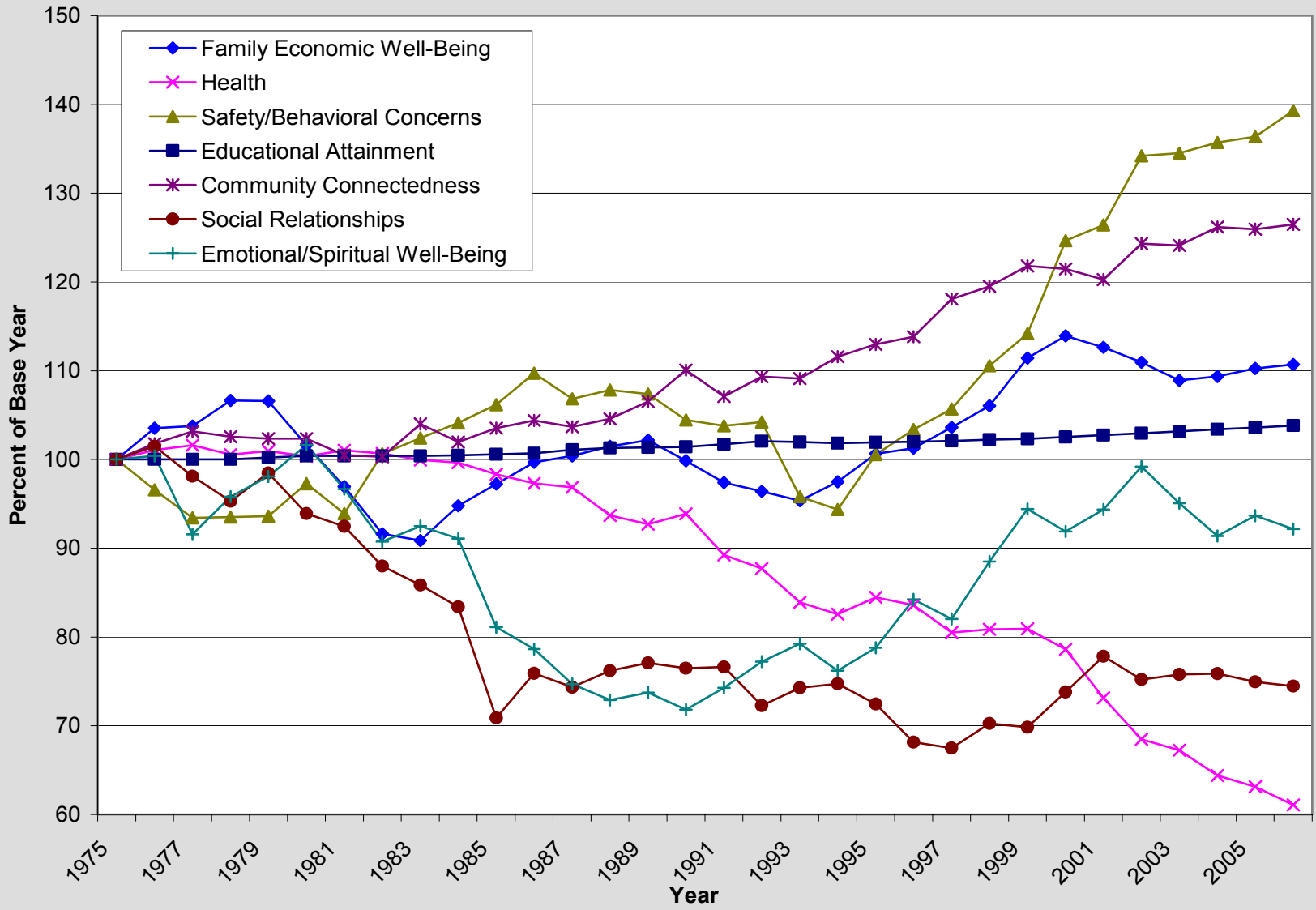
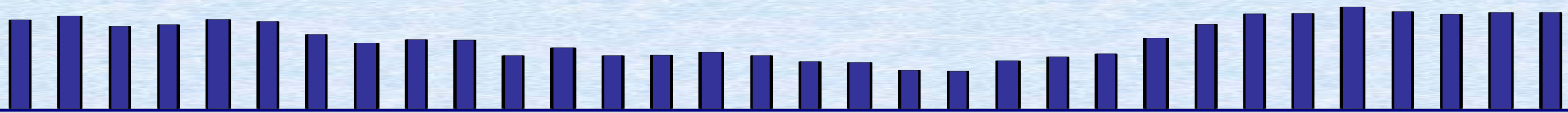


Figure 2. Domain-Specific Summary Indices, 1975-2005, with Projections for 2006.





Trends in Child and Youth Well-Being by Race and Ethnicity

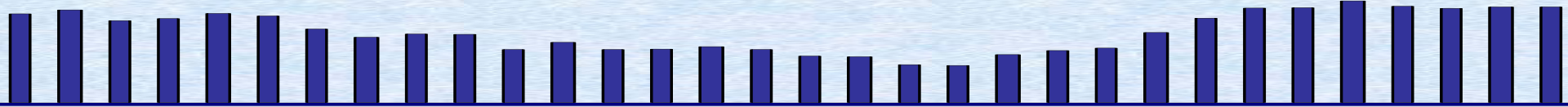
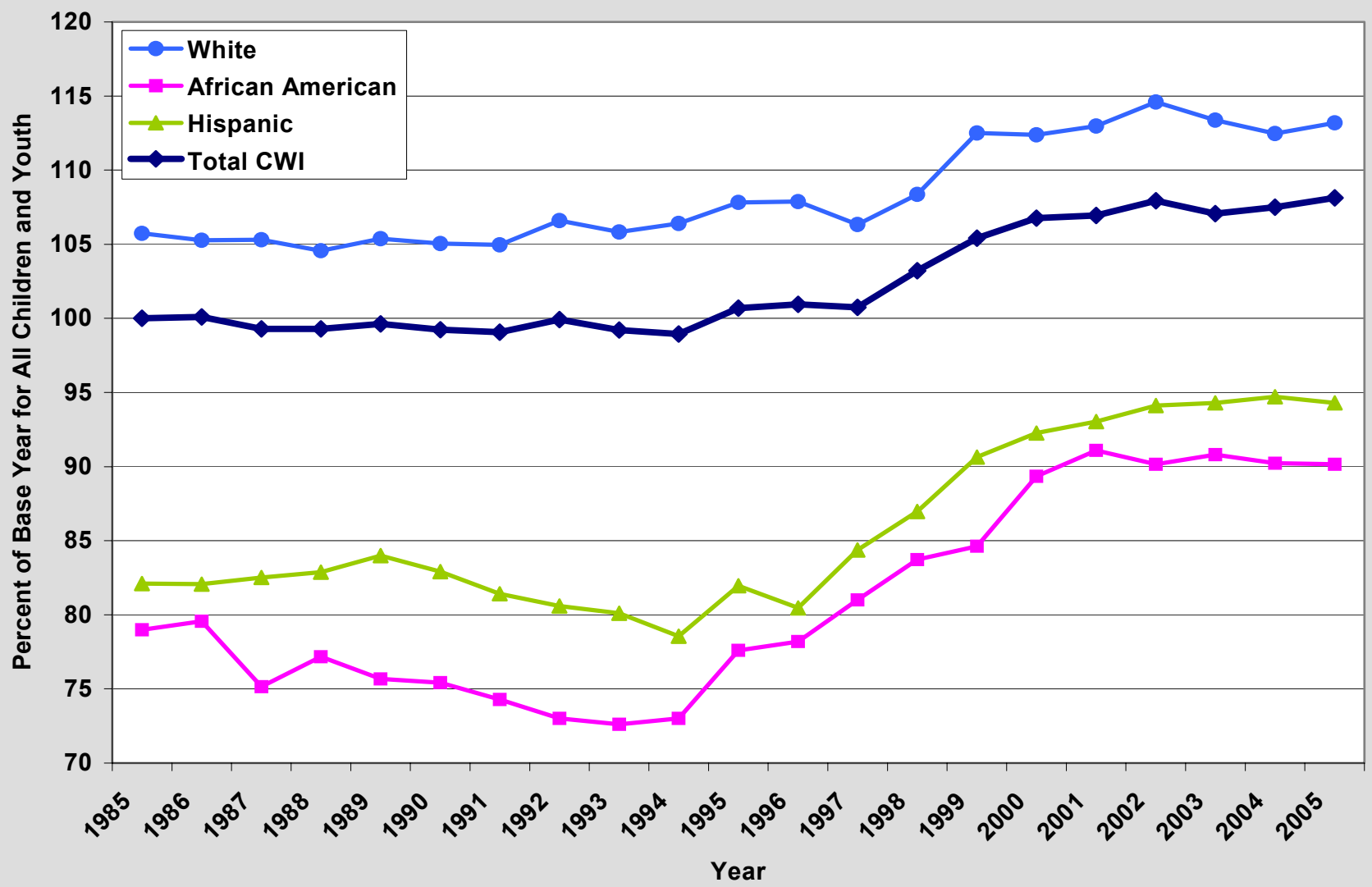
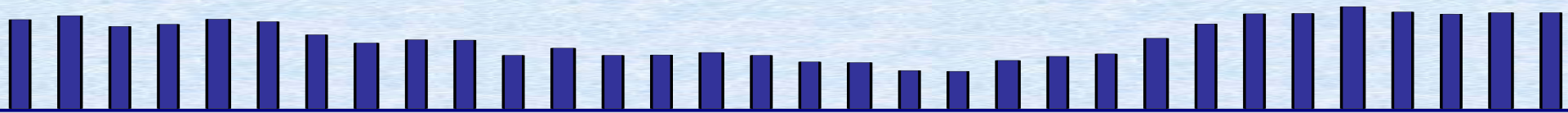


Figure 3. Total and Race/Ethnic-Group Summary CWIs as a Percent of Total CWI for all Children and Youth at Base Year, 1985-2005





Age-Specific CWI: Focus on Youth

What happens to the CWI if we focus only on indicators for youth?

FCD CWI

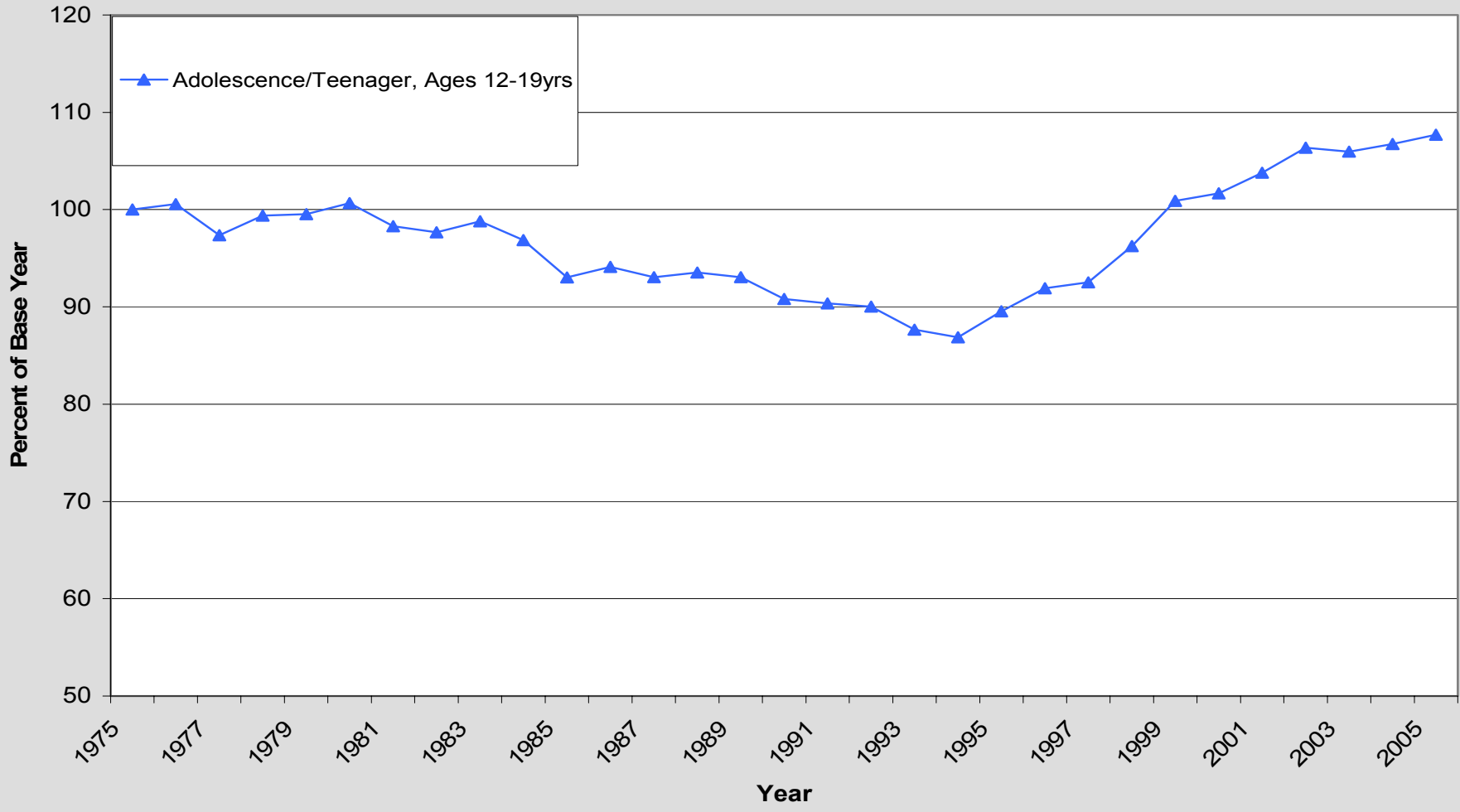
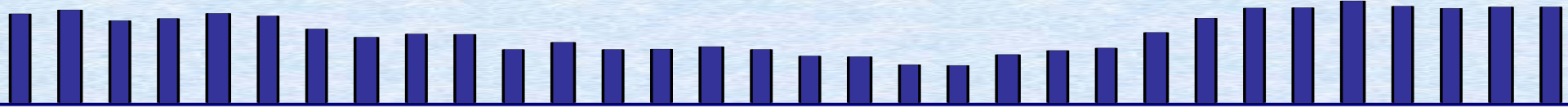


Figure 3.1. Youth CWI, 1975-2005.

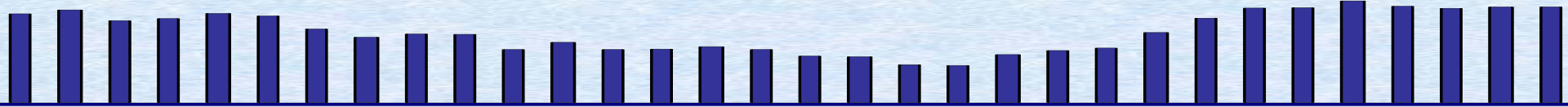
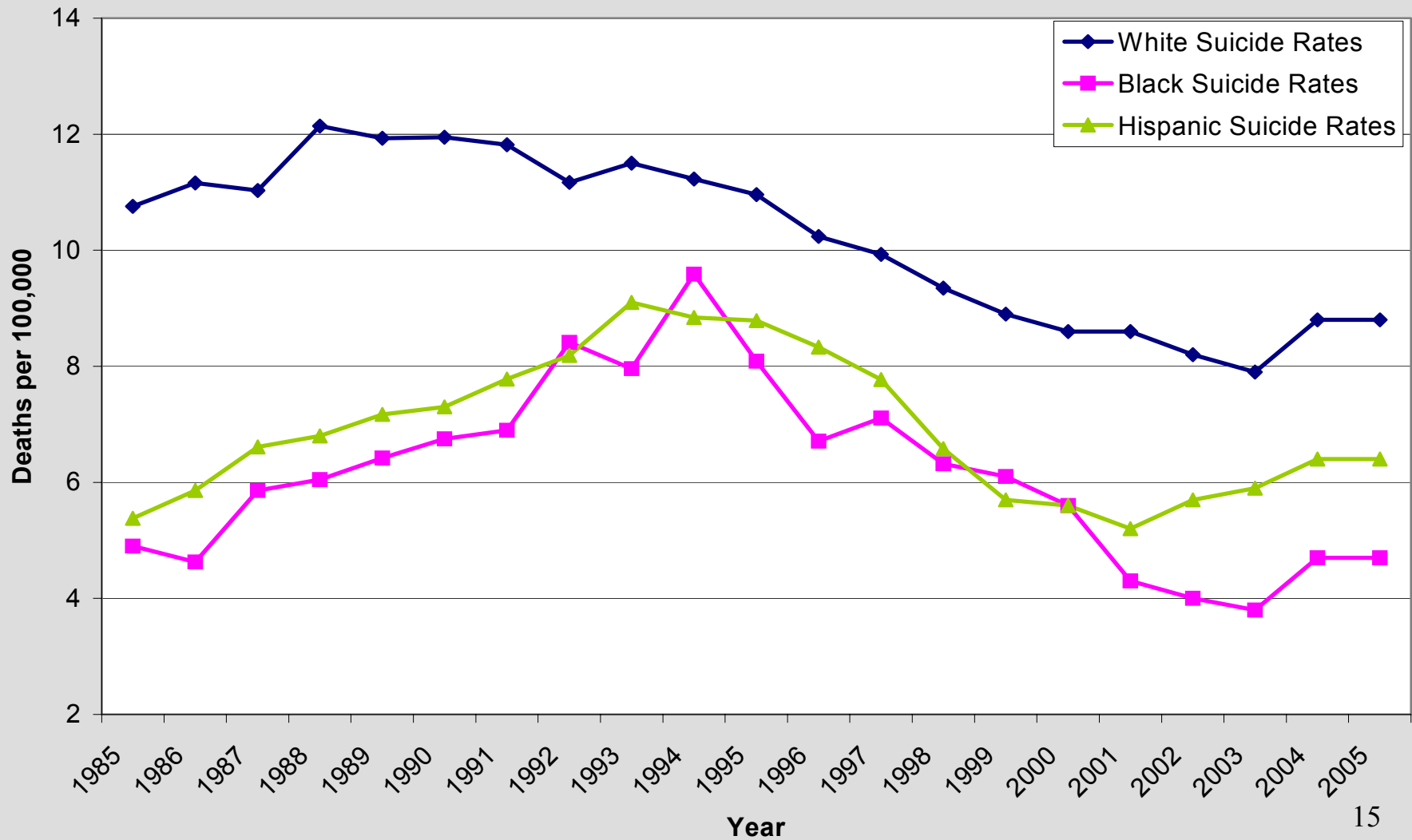


Figure 3a. Suicide Rates, Ages 15-19, 1985-2005.



FCD CWI

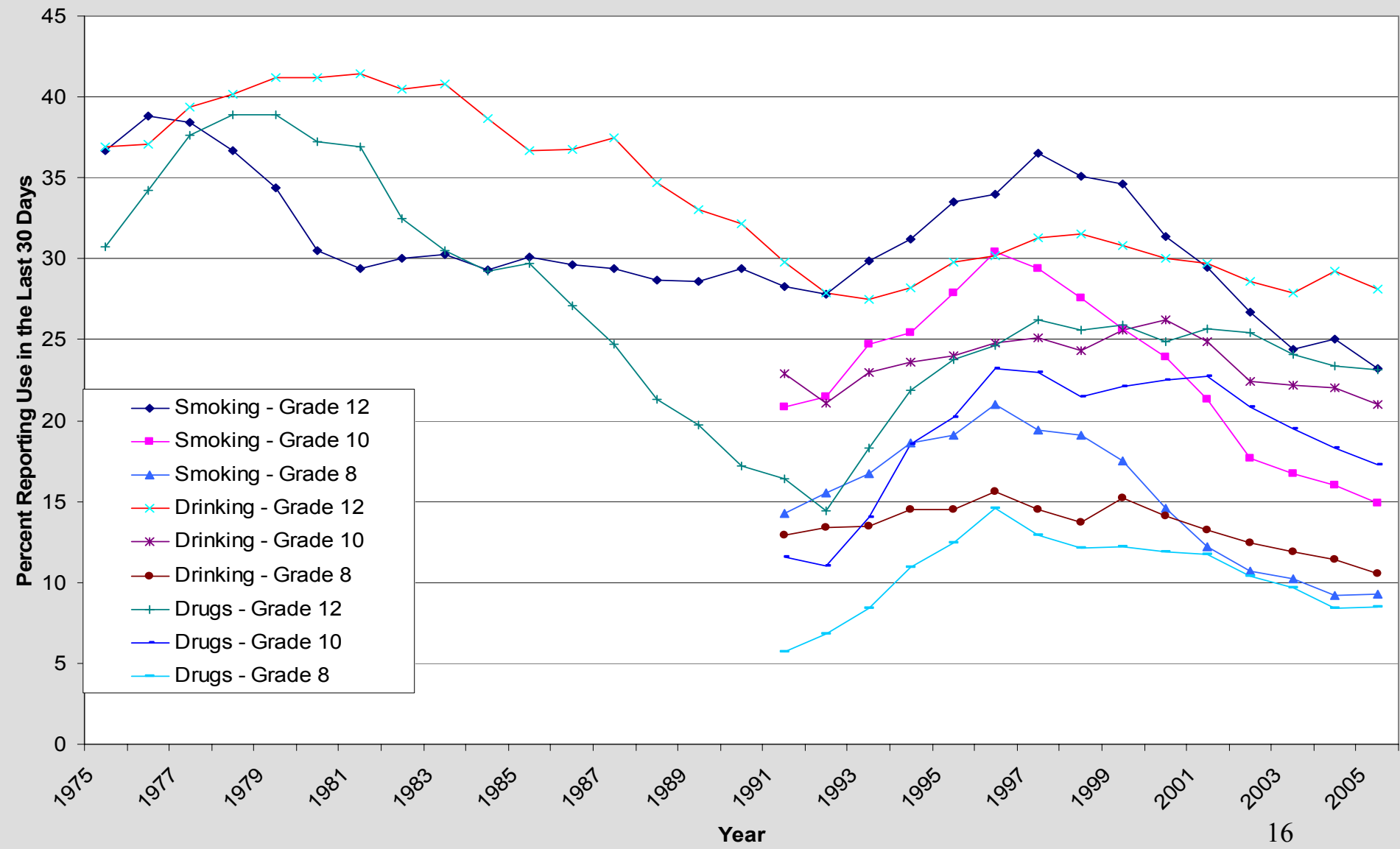
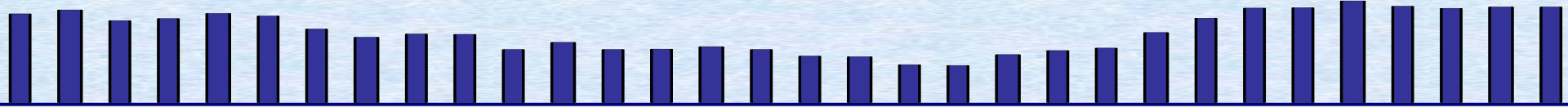
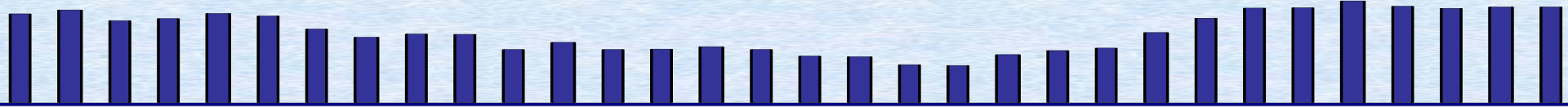


Figure 10. Teenage Illicit Smoking, Drinking, and Drug Use, 1975 (or 1991) to 2005.



SUGGESTIONS BASED ON EXPERIENCE WITH THE CWI FOR INDICATORS FOR MONITORING THE PROGRESS OF YOUTH (AGES 15-24) IN THE GLOBAL ECONOMY

ECONOMIC WELL-BEING:

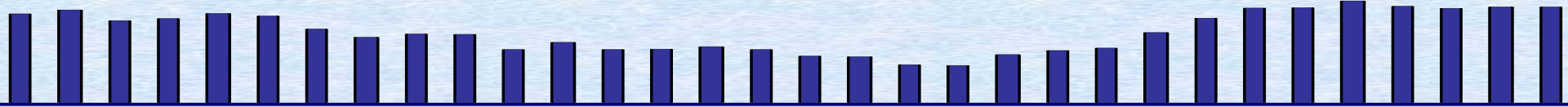
- Poverty Rate
- Median Income

HEALTH:

- Mortality Rate
- Subjective Health Status
- Activity Limitations
- Overweight Rate

SAFETY/BEHAVIORAL INDICATORS:

- Violent Crime Victimization Rate
- Violent Crime Offending Rate
- Binge Drinking (Alcohol) Rate
- Illicit Drug Use Rate



SUGGESTIONS BASED ON EXPERIENCE WITH THE CWI FOR INDICATORS FOR MONITORING THE PROGRESS OF YOUTH (AGES 15-24) IN THE GLOBAL ECONOMY

EDUCATIONAL ATTAINMENTS:

- High School or Equivalent Graduation Rate
- Technical School Graduation Rate
- College Degree Graduation Rate

COMMUNITY CONNECTEDNESS:

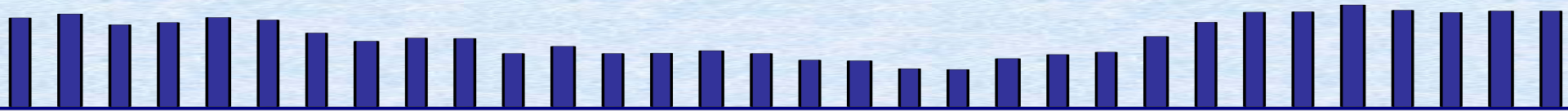
- Labor Force Participation Rate
- Unemployment Rate
- Rate of Youth Not Employed or Not in School
- Rate of Participation in Political Institutions

SOCIAL RELATIONSHIPS:

- Rate of Youth with Family Relationships/Interactions
- Rate of Youth with At Least One Close Friend/Confident

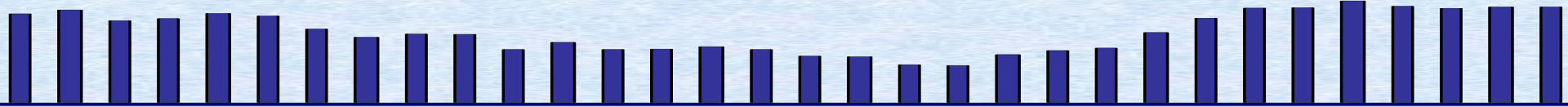
EMOTIONAL WELL-BEING:

- Suicide Rate



DEFINING GOALS AND TARGETS

One conventional approach to the definition of goals and targets for specific youth well-being indicators and composite indices is to convene panels of experts and youths to discuss the topic until consensus is reached.

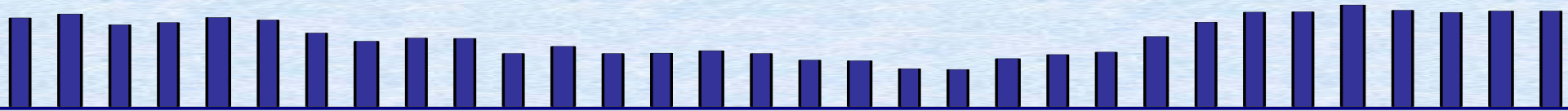


DEFINING GOALS AND TARGETS

Another approach is to compare groups of country based on:

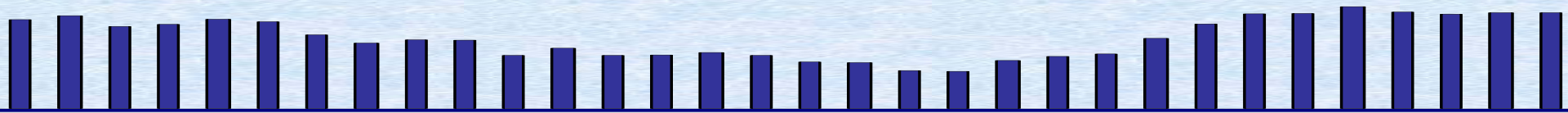
- ✓ regional groupings,
- ✓ size (population) of country, or
- ✓ levels of economic development

with respect to the “best practice” values achieved on the indicators or indices among the groups and to use these to define goals and targets.



DEFINING GOALS AND TARGETS

In practice, a combination of both approaches is recommended, as the panels of experts and youths can provide information on desirable goals and targets and empirical analyses of best practices can help inform the panel discussions and deliberations.



The CWI on the Web:

<http://www.soc.duke.edu/~cwi/>