

# Siege of Beslan School #1

The psychosocial impact upon Beslan's  
children, families, community, and  
psychosocial providers

Lisa Aronson, MSW, JD, PhD

# North Caucasus



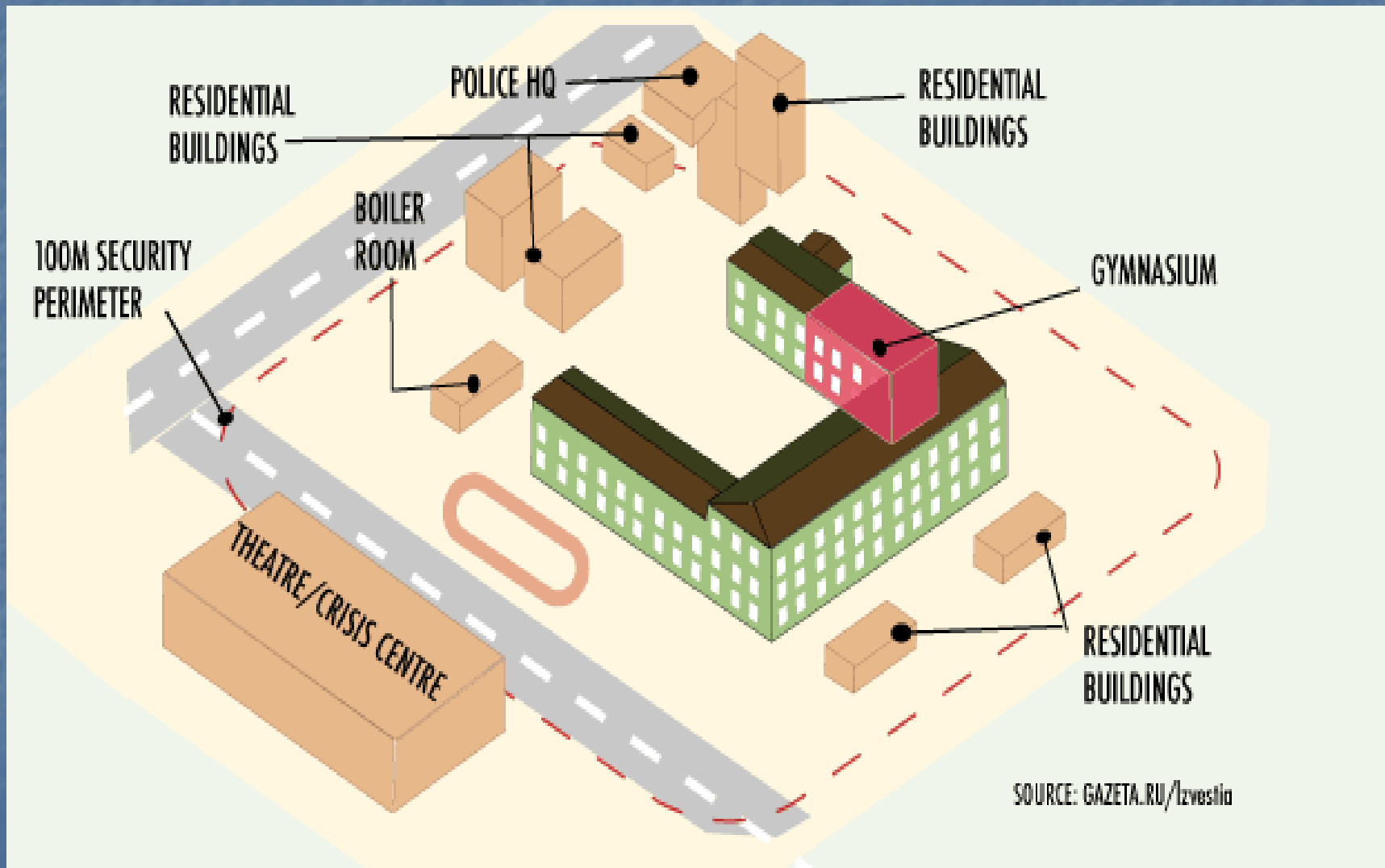
# Beslan, North Ossetia



# Beslan, North Ossetia

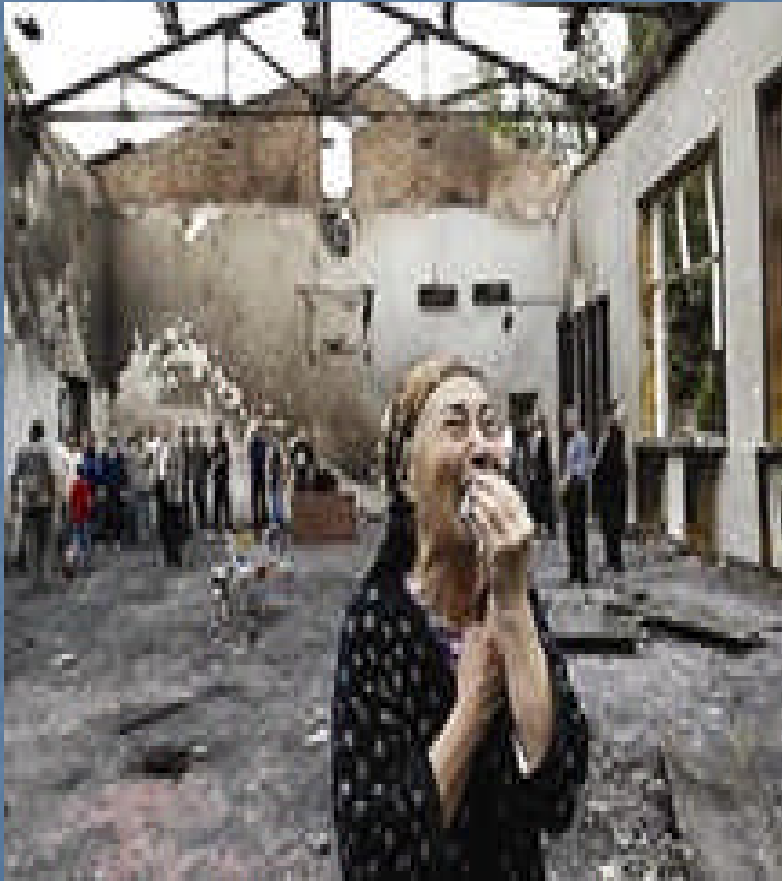
- “**Beslan** (Russian: Бесла́н) is a town located in the Republic of North Ossetia-Alania of Russia and is the administrative center of the Pravoberezhny District. The population in 2002 was about 33,600, making Beslan the third largest town in North Ossetia behind Vladikavkaz and Mozdok. The town is located about 10 miles (15 km) north of Vladikavkaz, at 43°12′ N 44°34′ E.
- Beslan is an important railway junction, situated on the main line between Rostov-on-Don and Baku, and is the starting point of a branch line to Vladikavkaz. It is an industrial-agricultural town dominated by a large corn processing plant established in the 1940s.”

# Beslan School #1





# Beslan School #1



# Beslan School #1



# Proud Traditions of North Ossetia





# Union Women of the Don Region





# Psychosocial Trainees



# Director Valentina Cherevantenko Consultant Lisa Aronson





# Beslan Tragedy

- Community Fragmentation
- Family Fragmentation
- Secondary Adversities
- Individual Traumatization
- Complicated Mourning



# Case Consultation

- “The things I had seen and suffered were burning inside of me; I felt closer to the dead than the living.”

-Primo Levi “The Periodical Table”

# Parents Surviving Their Children

- Complicated Bereavement

- Trauma

- Survivor Guilt

- Identification of the Child's Remains

# Children Surviving Their Parents

- Complicated Bereavement

- Trauma

- Secondary Adversities

- New Care-takers

- Injuries

- School changes

- Regression

- Developmental Impacts

# Children Whose Friend Dies

- Trauma
- Identification with the Dead
- Suspended Mourning



# Community Fragmentation

- Parents versus teachers
- Community versus 11<sup>th</sup> graders
- Children not returning to school
- No consensus on anniversary commemoration
- No consensus on memorializing the tragedy
- Suspicion between neighbors
- No celebrations
- Increase in drinking
- Fears of violence
- Troubled family life