

E c o n o m i c & S o c i a l A f f a i r s

**INTERNATIONAL MIGRATION FLOWS
TO AND FROM SELECTED COUNTRIES:
THE 2010 REVISION**

CD-ROM DOCUMENTATION



United Nations

POP/DB/MIG/Flow/Rev.2010
September 2011

Department of Economic and Social Affairs
Population Division

INTERNATIONAL MIGRATION FLOWS TO AND FROM SELECTED COUNTRIES: THE 2010 REVISION

CD-ROM DOCUMENTATION



United Nations

DESA

The Department of Economic and Social Affairs of the United Nations Secretariat is a vital interface between global policies in the economic, social and environmental spheres and national action. The Department works in three main interlinked areas: (i) it compiles, generates and analyses a wide range of economic, social and environmental data and information on which States Members of the United Nations draw to review common problems and take stock of policy options; (ii) it facilitates the negotiations of Member States in many intergovernmental bodies on joint courses of action to address ongoing or emerging global challenges; and (iii) it advises interested Governments on the ways and means of translating policy frameworks developed in United Nations conferences and summits into programmes at the country level and, through technical assistance, helps build national capacities.

Note

The designations employed in this report and the material presented in it do not imply the expression of any opinion whatsoever on the part of the Secretariat of the United Nations concerning the legal status of any country, territory, city or area or of its authorities, or concerning the delimitation of its frontiers or boundaries.

Symbols of United Nations documents are composed of capital letters combined with figures.

This publication has been issued without formal editing.

Suggested citation:

United Nations, Department of Economic and Social Affairs, Population Division (2011). International Migration Flows to and from Selected Countries: The 2010 Revision. (United Nations database, POP/DB/MIG/Flow/Rev.2010)

POP/DB/MIG/Flow/Rev.2010

Copyright © United Nations 2011
All rights reserved
Printed in the United Nations, New York

PREFACE

The Population Division of the Department of Economic and Social Affairs (DESA) of the United Nations Secretariat is responsible for providing the international community with up-to-date and objective information on population and development. The Population Division provides guidance to the United Nations General Assembly, the Economic and Social Council and the Commission on Population and Development on population and development issues and undertakes studies on population levels, trends and dynamics, monitors population policies and conducts research on the interrelationships between population and development.

The Migration Section of the Population Division estimates the global number of international migrants at regular intervals, monitors levels, trends and policies of international migration, and analyzes the relationship between international migration and development. The Migration Section convenes the interagency coordination meeting on international migration and organizes expert group meetings. The Section participates on behalf of DESA in the interagency Global Migration Group (GMG), services the intergovernmental process on international migration and development at the General Assembly and acts within the United Nations Secretariat as the focal point for the State-led Global Forum on Migration and Development (GFMD). As part of its monitoring activities, the Section maintains the United Nations Global Migration Database, a comprehensive dataset on international migrants classified by country of residence, country of birth, country of citizenship, sex and age.

This report provides the documentation for the dataset entitled *International Migration Flows to and from Selected Countries: The 2010 Revision*. This dataset includes time series data on the flows of international migrants to and from countries that gather this information systematically. The dataset is presented in Excel files which, together with this report, are available on CD-ROM. The publication and CD-ROM are part of the Population Division's efforts to disseminate information resulting from its monitoring activities.

Responsibility for *International Migration Flows to and from Selected Countries: The 2010 Revision* rests with the United Nations Population Division. The preparation of the dataset was facilitated by collaboration with other United Nations offices. In particular, the Population Division acknowledges the support of national institutions in charge of statistics on international migration. In addition, the Population Division is grateful to the United Nations Economic Commission for Europe (UNECE) for sharing information collected as part of a project aimed at comparing and exchanging international migration statistics in countries of the Commonwealth of Independent States (CIS)¹, and to the Statistics Division of the Department of Economic and Social Affairs for its continued cooperation.

For further information about *International Migration Flows to and from Selected Countries: The 2010 Revision*, please contact the Population Division, United Nations, New York, NY 10017, USA by telephone (+1 212) 963-3179, fax (+1 212) 963-2147 or e-mail (migrationp@un.org). More information on the activities of the Population Division in the area of international migration can be found at www.unmigration.org.

¹ See <http://www.unece.org/stats/documents/2007.12.migration.html>

CONTENTS

	<i>Page</i>
Preface	iii
Explanatory notes	vii
International Migration Flows to and from Selected Countries: The 2010 Revision	1
A.Introduction	1
B.Definitions	1
C.Description of the dataset	7
D.Description of country data	8
Annex I: Overview of time criteria and sources	16
Annex II: Content of the dataset	19
Annex III: Migration trends since 1980: Total immigration and emigration	21
Annex IV: Migration trends since 1980: Immigrating and emigrating foreigners	23
Annex V: Migration trends since 1980: Immigrating and emigrating citizens.....	25
Order form	27

EXPLANATORY NOTES

The dataset makes use of the following symbols:

A hyphen (-) indicates that the item is not applicable.

A minus sign (-) before a figure indicates a decrease.

A zero (0) indicates that the value is zero, rounded to zero or that no data are available, unless otherwise indicated.

Two dots (..) indicate that the value is not reported.

Years given refer to calendar years, unless otherwise indicated.

Use of a hyphen (-) between years, for example, 1990-2000, signifies the full period involved.

Numbers in tables do not necessarily add to totals because of rounding or due to privacy regulations.

References to countries and areas:

In compiling and presenting the data on international migration flows an effort was made to preserve the information as contained in the original sources, especially when standardization of countries of origin or destination was not possible because of the different practices followed by the national institutions generating the data. Whenever possible, the data shown conform as closely as possible to current United Nations practices. That is, if possible, countries and areas are grouped geographically into six major areas: Africa; Asia; Europe; Latin America and the Caribbean; Northern America, and Oceania. The former Union of Soviet Socialist Republics (USSR) is also shown as a major area when data on international migrants to or from that area are reported separately. The major areas are further divided into 22 geographical regions.

The designations employed and the material in this publication do not imply the expression of any opinion whatsoever on the part of the Secretariat of the United Nations concerning the legal status of any country, territory or area or of its authorities, or concerning the delimitation of its frontiers or boundaries.

More developed regions comprise all regions of Europe plus Northern America, Australia and New Zealand, Japan and the former USSR, when data for international migrants to or from any of those countries or major areas are reported separately. The term “developed countries” is used to designate countries in the more developed regions.

Less developed regions comprise all regions of Africa, Asia (excluding Japan) and Latin America and the Caribbean, as well as Melanesia, Micronesia and Polynesia. The term “developing countries” is used to designate countries in the less developed regions.

Country names and the composition of geographical areas follow those of “Standard country or area codes for statistical use” (ST/ESA/STAT/SER.M/49/Rev.3), available at: <http://unstats.un.org/unsd/methods/m49/m49.htm>.

INTERNATIONAL MIGRATION FLOWS TO AND FROM SELECTED COUNTRIES:
THE 2010 REVISION

A. INTRODUCTION

The CD-ROM entitled *International Migration to and from Selected Countries: The 2010 Revision* contains time series data on the flows of international migrants as recorded by 43 countries: Armenia, Australia, Austria, Azerbaijan, Belarus, Belgium, Bulgaria, Canada, Croatia, Czech Republic, Cyprus, Denmark, Estonia, Finland, France, Germany, Greece, Hungary, Iceland, Ireland, Israel, Italy, Kazakhstan, Kyrgyzstan, Latvia, Lithuania, Luxembourg, Netherlands, New Zealand, Norway, Poland, Portugal, Republic of Moldova, Romania, Russian Federation, Slovakia, Slovenia, Spain, Sweden, Switzerland, Ukraine, United Kingdom, and the United States of America. These 43 countries have relatively complete data on international migration flows.

The *2008 Revision* of this publication² contained time series data on the flows of international migrants for 29 countries: Australia, Austria, Belgium, Canada, Croatia, Czech Republic, Denmark, Estonia, Finland, France, Germany, Hungary, Iceland, Israel, Italy, Latvia, Lithuania, Luxembourg, Netherlands, New Zealand, Norway, Poland, Slovakia, Slovenia, Spain, Sweden, Switzerland, United Kingdom, and the United States of America. The *2005 Revision* contained time series data on international migration flows for 15 countries. The increase in the number of countries covered by these publications over time indicates the progress made in compiling and disseminating data on international migration flows.

B. DEFINITIONS

The compilation and dissemination of data on international migration flows is useful for analytical purposes, but also serves to raise awareness about the problems of comparability among available statistics. Countries collecting and publishing data on the flows of international migrants use different definitions to identify migrants and use different concepts to determine their origin and destination. The major differences in the identification of international migrants for statistical purposes arise because of variations in the definition of residence and duration of stay. The *United Nations Recommendations on Statistics of International Migration, Revision 1*³ defines an international migrant as any person who changes his or her country of usual residence. An international migrant who changes his or her place of usual residence for at least one year is defined as a long-term migrant while a person who changes his or her place of usual residence for more than three months but less than one year is considered to be a short-term migrant.

In practice, the minimum length of stay for a person to be counted as an international migrant varies considerably among countries (see table 1). Out of the 43 countries with data on immigration flows, only 16 identify international migrants as persons who plan to stay for at least one year and, among them, two countries apply a different time criterion to identify sub-groups of migrants. Eleven countries describe migrants as persons establishing permanent residence, which, in the case of foreigners, usually implies having an open-ended permission to stay. At least two of these countries apply a different criterion for particular groups of migrants. For seven countries, a clear time criterion for the identification of migrants is not available. In six countries, the intended length of stay for the identification of most migrant groups is three months or more, while in seven countries the criterion for most migrant groups is six months or

² United Nations, Department of Economic and Social Affairs, Population Division (2009). *International Migration Flows to and from Selected Countries: The 2008 Revision*. (United Nations database, POP/DB/MIG/Flow/Rev.2008)

³ United Nations, Department of Economic and Social Affairs (1998). *Recommendations on Statistics on International Migration, Revision 1*. Sales No. E.98.XVII.14, page 17.

more. In the Netherlands, the criterion for the identification of migrants is four months. In several European countries, the time criterion to qualify as an international migrant differs between foreigners originating from the European Economic Area (EEA)⁴ and those originating from other countries.

The time criterion used to identify emigrants varies equally. Among the 37 countries with data on emigration flows, twelve use an expected length of stay abroad of at least one year to identify emigrants in conformity with the United Nations definition. Four countries use an intended length of stay abroad of at least six months, while three countries use a stay abroad of at least three months. In seven countries, either a permanent stay abroad or the act of relinquishing permanent residence in the country is used as the criterion to identify emigrants. In at least twelve countries the criterion to identify emigrants is not well specified in terms of time.

Table 1
Countries by time period used to define international migration

<i>Criterion</i>	<i>Immigration</i>	<i>Emigration</i>
Establishment of permanent residence	Australia ^a , Azerbaijan, Belarus, Bulgaria, Canada, Croatia, Czech Republic ^b , Israel ^c , Poland, Portugal ^d , Slovakia ^e , United States	Australia ^a , Azerbaijan, Belarus, Bulgaria, Croatia, Czech Republic, Poland, Slovakia ^e
Expected stay of at least one year	Australia ^a , Czech Republic ^b , Cyprus, Estonia, Finland, France, Hungary ^f , Italy, Latvia, New Zealand ^g , Romania, Slovakia ^e , Slovenia ^h , Sweden, Switzerland, United Kingdom	Australia ^a , Cyprus, Estonia, Finland, Italy, Latvia, New Zealand ^g , Romania, Slovakia ^e , Slovenia ^g , Sweden, United Kingdom
Expected stay of at least six months	Denmark ⁱ , Iceland ^j , Kazakhstan, Kyrgyzstan, Lithuania, Norway, Ukraine	Denmark, Lithuania, Norway, Ukraine
Expected stay of at least three months	Armenia, Austria ^k , Belgium, Czech Republic ^b , Denmark ⁱ , Hungary ^f	Austria ^k , Belgium, Hungary ^f
Other time criterion	Israel ^c , Netherlands ^l , Portugal ^d	Netherlands ^l
No time criterion	Germany, Greece ^m , Ireland, Luxembourg, Republic of Moldova ⁿ , Russian Federation, Spain	Armenia, Germany, Hungary ^f , Iceland, Ireland, Kazakhstan, Kyrgyzstan, Luxembourg, Republic of Moldova, Russian Federation, Spain, Switzerland

NOTES: No data on migrant outflows are available for Canada, France, Greece, Israel, Portugal and the United States. The time criterion applied for emigration from a Nordic country to another Nordic country depends on rules established by the receiving country.

^a Since 2004, data are based on actual duration of stay. Permanent migration flows are reported in the data series by country of birth.

^b For non-EEA citizens: permanent residence. For non-EEA citizens: at least one year. For EEA citizens: at least three months.

^c The data series include permanent residents as well as “potential immigrants”, who obtain a residence permit for up to three years.

^d Application for residence permits under current legislation.

^e Since 2003 long-term (one-year) data series available. Permanent migration data are available since 1993.

^f For immigrating citizens: three months. For immigrating foreigners: one year. For emigrating citizens: three months. For emigrating foreigners: no time criterion specified.

^g Before 1985, the data series by country birth include only permanent flows.

^h Until 2008 three months.

ⁱ Citizens from EEA and Switzerland: at least six months. Citizens from other countries: at least three months.

^j Registration is optional for persons staying for three to six months for the purpose of work or study.

^k No time criterion specified before 2002.

^l Immigrants: four months. Emigrants: eight months.

^m Issuance of residence permits.

ⁿ Foreigners need a temporary (valid for less than one year) or a permanent residence permit.

When comparing the time criterion used to identify migrants in inflows and migrants in outflows,

⁴ On the basis of the European Economic Area (EEA) agreement between the European Union (EU) and European Free Trade Association (EFTA), citizens of one EEA country have the right to work in another EEA country on the same conditions as that Member State's own citizens. For the new Member States who joined the EU in 2004, certain restrictions apply to freedom of movement for a period of up to seven years. As of 2009, the following 30 countries were members of the European Economic Area (EEA): Austria, Belgium, Bulgaria, Cyprus, Czech Republic, Denmark, Estonia, Finland, France, Germany, Greece, Hungary, Iceland, Ireland, Italy, Latvia, Liechtenstein, Lithuania, Luxembourg, Malta, the Netherlands, Norway, Poland, Portugal, Romania, Slovakia, Slovenia, Spain, Sweden and the United Kingdom.

there is a tendency for countries to use the same time criterion for both. However, the number of countries using a given criterion for migrant outflows is usually smaller than that using that criterion for migrant inflows.

In addition to the lack of comparability in the time criterion used to identify migrants, it is important to remember that when the identification of migrants is based on declared intentions, those intentions may change over time. For instance, the date of issuance of a residence permit may or may not coincide with the date of arrival of a migrant in the country. When permits are issued to persons already living in the country due to a change in their immigration status, the discrepancy between the date of issuance of the permit and the date of arrival of the migrant may be significant.

A further factor limiting the comparability of migration statistics is that a considerable number of countries have changed their definitions to identify migrants over time. Changes in methodology, definitions and data sources may result in a lack of comparability over time for the respective time series included in this publication.

International migration statistics are collected through a variety of data collection systems. In 18 out of the 43 countries included in this dataset, the migration data were collected from a centralised or local population register. In five countries - Canada, France, Greece, Portugal and the United States -, the data are based on the number of residence permits issued. In seven countries (Armenia, Azerbaijan, Belarus, Kazakhstan, Kyrgyzstan, Russian Federation and Ukraine) data are collected through statistical forms that are completed when persons change their place of residence. These forms are submitted for statistical processing to the respective ministry or directly to the national statistical office. Another seven countries derive migration flow statistics from a combination of data from registers, statistical forms and permits (Bulgaria, the Czech Republic, Hungary, Romania, Slovakia, Slovenia and Switzerland). Border statistics are the main source of information for five countries (Australia, Cyprus, Israel, New Zealand and the United Kingdom). In Ireland, migration statistics are estimated based on a household survey. In general, the type of data collection system generating migration data has important implications for data coverage. For instance, data derived from registers that govern the issuance of permits refer only to foreigners.

Statistics of migrant inflows and outflows also differ according to the criteria used to identify the country of origin or destination of the migrant. For migrant inflows, information is available by country of citizenship for 36 countries, by country of previous residence for 34 countries and by country of birth for eight countries. For migrant outflows, 32 countries reported data on the basis of country of next residence, 31 countries reported data by country of citizenship, while five countries (Australia, the Netherlands, New Zealand, Sweden and United Kingdom) reported emigration data by country of birth (see table 2).

The period for which annual migration data were available varied considerably (see table 2). Countries having migration data for periods prior to the 1980s include: Australia, Belgium, Canada, Germany, the Netherlands, New Zealand, Sweden, United Kingdom and the United States. Countries with time series starting in the 1980s are Denmark, Finland, Iceland, Ireland, Italy, Luxembourg, Norway and Spain. The time series for Azerbaijan, Croatia, Czech Republic, Hungary, Kyrgyzstan, Latvia, Poland, the Republic of Moldova, Romania, Russian Federation, Slovakia and Slovenia start in the 1990s, after the fall of the Berlin Wall. For Austria, France, Israel, Portugal and Switzerland, annual statistics on migration flows are also available since the 1990s. For Armenia, Belarus, Bulgaria, Cyprus, Estonia, Greece, Kazakhstan, Lithuania and the Ukraine statistics on migration inflows or outflows are available since the 2000s.

Countries by starting period of migration data series and criterion used for collecting data

<i>Starting period</i>	<i>Immigration</i>	<i>Emigration</i>
<i>a. Country of residence</i>		
Before 1970	Canada, Germany, Sweden, United Kingdom	Germany, Sweden, United Kingdom
1970-1979	Australia, New Zealand	Australia, New Zealand
1980-1989	Denmark, Finland, Iceland, Ireland, Italy, Norway, Spain	Denmark, Finland, Iceland, Ireland, Italy, Norway
1990-1999	Austria, Azerbaijan, Croatia, Czech Republic, Kyrgyzstan, Israel, Latvia, Poland, Romania, Russian Federation, Slovakia	Austria, Azerbaijan, Croatia, Czech Republic, Kyrgyzstan, Latvia, Poland, Romania, Russian Federation, Slovakia
2000-2009	Armenia, Belarus, Bulgaria, Cyprus, Estonia, Kazakhstan, Lithuania, Netherlands, Ukraine, United States	Armenia, Belarus, Bulgaria, Cyprus, Estonia, Kazakhstan, Lithuania, Netherlands, Republic of Moldova, Spain, Ukraine
<i>b. Country of citizenship</i>		
Before 1980	Belgium, Canada, Germany, Netherlands	Belgium, Germany, Netherlands
1980-89	Denmark, Finland, Iceland, Luxembourg, New Zealand, Norway	Denmark, Finland, Iceland, Luxembourg, New Zealand, Norway
1990-99	Austria, Croatia, Czech Republic, France, Hungary, Latvia, Italy, Poland, Portugal, Republic of Moldova, Romania, Slovenia, Spain Switzerland, United Kingdom	Austria, Croatia, Czech Republic, Hungary, Italy, Latvia, Poland, Romania, Slovenia, Switzerland, United Kingdom
2000-2009	Armenia, Bulgaria, Cyprus, Estonia, Greece, Ireland, Lithuania, Slovakia, Sweden, Russian Federation, Ukraine	Armenia, Bulgaria, Cyprus, Estonia, Ireland, Lithuania, Russian Federation, Slovakia, Spain, Sweden, Ukraine
<i>c. Country of birth</i>		
Before 1990	Australia, Canada, New Zealand, United States	Australia, New Zealand
1990-1999	Israel, Netherlands, United Kingdom	Netherlands, United Kingdom
2000-2009	Sweden	Sweden

^a Data before 1990 are classified by country of residence.

Note: No data on migrant outflows are available for Canada, France, Greece, Israel, Portugal and the United States.

Among the 43 countries included in the dataset, there is also considerable variation in the coverage of particular migrant groups in the migration statistics (see table 3). Immigration statistics in Canada, France, Greece, Israel, Luxembourg, Portugal, the Republic of Moldova and the United States are only available for foreigners. Most of these countries base their migration statistics on the number of residence permits issued. In Luxembourg, emigration statistics include only foreigners while in the Republic of Moldova, emigration data refer only to citizens. The data series for the remaining 35 countries cover both foreigners and citizens. For the countries that define international migrants on the basis of citizenship, the distinction between foreigners and citizens is by definition available. Among the 30 countries where international migrants are defined on the basis of country of residence and for which data on foreigners and citizens was available, 10 countries allow for a distinction between foreigners and citizens.

Table 3

Countries by coverage of migration data and criterion used for collecting data

<i>Coverage</i>	<i>Immigration</i>	<i>Emigration</i>
<i>a. Country of residence</i>		
Foreigners only	Austria, Canada, Israel, United States	Austria
Citizens only		Republic of Moldova
Foreigners and citizens combined	Armenia, Azerbaijan, Belarus, Bulgaria, Croatia, Cyprus, Czech Republic, Estonia, Ireland, Kazakhstan, Kyrgyzstan, Latvia, Lithuania, Poland, Romania, Russian Federation, Slovakia, Sweden, Ukraine, United Kingdom	Armenia, Azerbaijan, Belarus, Bulgaria, Croatia, Cyprus, Czech Republic, Estonia, Ireland, Kazakhstan, Kyrgyzstan, Latvia, Lithuania, Poland, Romania, Russian Federation, Slovakia, Sweden, Ukraine, United Kingdom
Foreigners and citizens separately	Australia, Denmark, Finland, Germany, Iceland, Italy, Netherlands, New Zealand, Norway, Spain	Australia, Denmark, Finland, Germany, Iceland, Italy, Netherlands, New Zealand, Norway, Spain
<i>b. Country of citizenship</i>		
Foreigners only	Canada, France, Greece, Luxembourg, Portugal, Republic of Moldova	Luxembourg
Foreigners and citizens separately	Armenia, Austria, Belgium, Bulgaria, Croatia, Cyprus, Czech Republic, Denmark, Estonia, Finland, Germany, Hungary, Iceland, Ireland, Italy, Latvia, Lithuania, Netherlands, New Zealand, Norway, Poland, Romania, Russian Federation, Slovakia, Slovenia, Spain, Sweden, Switzerland, Ukraine, United Kingdom	Armenia, Austria, Belgium, Bulgaria, Croatia, Cyprus, Czech Republic, Denmark, Estonia, Finland, Germany, Hungary, Iceland, Ireland, Italy, Latvia, Lithuania, Netherlands, New Zealand, Norway, Poland, Romania, Russian Federation, Slovakia, Slovenia, Spain, Sweden, Switzerland, Ukraine, United Kingdom
<i>c. Country of birth</i>		
Foreigners only	Canada, Israel, United States	
Foreigners and citizens combined	Netherlands, Sweden, United Kingdom	Netherlands, Sweden, United Kingdom

C. DESCRIPTION OF THE DATASET

The CD-ROM provided with this publication contains a total of 45 Excel workbooks.

Forty-three out of the 45 workbooks are country files containing data on international migration flows to or from each of the 43 countries covered by this publication. These 43 workbooks have a file name that includes the name of the country concerned, preceded with “UN_MigFlow_” and followed by “_2010”. The country workbooks contain at least two worksheets with the following content:

- The first worksheet, or set of worksheets, of each country workbook contains the regional aggregates calculated from the inflows and, where available, outflows and net flows, at the country level. On each worksheet tab, the designation “Regional aggregates” is followed by the criterion according to which the migration data were collected, namely “residence”, “citizenship” or “birth”. When the country collected migration data according to more than one criterion, the workbook contains different worksheets with regional aggregates.
- The second worksheet or set of worksheets of each country workbook contains data on migrant

inflows by country of origin and, where available, outflows by country of destination as well as net flows. On each worksheet tab, the designation “Country data” is followed by the criterion according to which the migration data were collected, namely “by residence”, “by citizenship”, or “by birth”. When the country collected migration data according to more than one criterion, the workbook contains different worksheets with data at the country level.

The workbook named “UN_MigFlow_Totals_2010.xls” contains the global aggregates as well as the aggregates by level of development, calculated from the inflows and, where available, outflows and net flows, at the country level. There are three separate worksheets for the aggregates, one for each of the three criteria used in collecting data on migration flows, that is, by residence, by citizenship and by birth.

The workbook “UN_MigFlow_Notes_2010.xls” provides country notes and sources pertaining to the migration data contained in this publication. It also contains a worksheet with the various classifications of countries that were used in aggregating the migration data.

Where possible, the dataset makes a distinction between values that are zero, indicated by a “0”, and values that are not applicable or reported separately, indicated by two dots (“..”). However, many of the countries that report migration data fail to make a distinction between cells without migrants, cells where the number of migrants is very low or cells that were not tabulated explicitly in a given year. Depending on the reporting country and year, therefore, a zero in a given cell may indicate that the number was either zero, not available or not applicable. When known, the meaning of a zero is described in the worksheet “Notes” contained in the workbook sheet entitled “UN_MigFlow_Notes_2010.xls”.

The lay-out of the worksheets containing regional aggregates and country level data, included in the country workbooks, and those containing global aggregates and aggregates by development level, contained in the workbook “UN_MigFlow_Notes_2010.xls”, is described below.

1. Lay-out of the “Regional aggregates” worksheets

Column A: Entries under “Type” indicate whether the data presented refer to immigrants, emigrants or to net migration, that is, the difference between the number of immigrants and the number of emigrants.

Column B: Entries under “Coverage” indicate whether the data refer to foreigners, to citizens or to both groups combined.

Columns C and D: Entries under “Regional aggregates” include the aggregates by major area and by region. In the case of immigrants, the columns refer to the major area and region of origin. In the case of emigrants, the two columns refer to the major area and region of destination. For net migration, this column indicates the major area and region recording a net inflow or outflow of migrants, depending on the sign of the data in the cells that follow to the right. In the case of the Northern America, USSR (former) and “Other”, the totals for the major area and the region are identical.

An effort has been made to code all countries and areas reported by the 43 countries according to the standard major areas, regions and development groups used by the United Nations Population Division of UNDESA. However, this was not always possible because the majority of countries provide data on international migration flows disaggregated by a limited number of countries and use categories such as “Other Africa” to group the data pertaining to countries that are not listed separately. In general, migrants in those generic categories have been assigned to the region or major areas to which they belong without including them in any of the smaller regions. That is, migrants originating in “Other Africa” were coded in the sub-total for “Africa”, but not in any of the regional sub-totals within Africa, such as “Northern Africa” or

“Eastern Africa”. When countries reported residual categories that did not correspond to any of the major areas used by the United Nations Population Division, such as “Other America” or “Other Middle East”, these sub-totals were assigned to the major area to which they corresponded most closely to.

Regional aggregates might be significantly underestimated for some reporting countries where the number of countries of origin and destination is limited and the “Other” or “Unknown” categories are significant. For some reporting countries, the number of countries of origin and destination has increased over time, making the analysis of times series of regional aggregates precarious.

Migrants reported under the category “USSR (former)” were classified separately. After the break-up of the former USSR or earlier in some cases, the category “USSR (former)” has become a residual category, as most international migrants from and to the successor States of the former USSR are shown separately under their countries of origin or destination. Therefore, for recent periods, international migrants listed under that category are a fraction of all migrants from that region. Migrants reported as “Other”, “Stateless” or “Unknown” were not assigned to any geographical area, but have been listed separately.

2. Lay-out of the “Country data” worksheets

Column A: Entries under “Type” indicate whether the data presented refer to immigrants, emigrants or to net migration, that is, the difference between the number of immigrants and the number of emigrants.

Column B: Entries under “Coverage” indicate whether the data refer to foreigners, to citizens or to both groups combined.

Column C: Entries under “OdName” indicate the name of the country of origin for immigrants or the name of the country of destination for emigrants. For net migration, this column indicates the name of the country recording a net inflow or outflow of migrants, depending on the sign of the data in the cells that follow to the right.

The data series in this publication generally do not contain an exhaustive list of countries of origin for immigrants or countries of destination for emigrants. In practice, many countries that report migration data combine data for countries of origin or destination when the number of migrants involved is small. Such data are then reported in a separate category often labelled as “Other”.

The country nomenclature used in this dataset conforms as closely as possible to current United Nations practices. However, an effort has been made to preserve the information contained in the original sources when it does not conform to current practice. Thus, whenever standardization was not possible, the original nomenclature was maintained. In the case of the United Kingdom, for instance, the grouping “Commonwealth countries” has been used as a regional aggregate although it does not conform to United Nations practices. The composition of non-standard country groupings is explained in the workbook “UN_MigFlow_Notes_2010.xls”.

Given that the data shown span a long period, changes in the names of countries or the territories that they cover needed to be accommodated. Country names that no longer exist due to a break-up are followed by the suffix “former”, including Czechoslovakia (former), Serbia and Montenegro (former) and Yugoslavia (former). In the case of Ethiopia, the country name remained unchanged following the secession of Eritrea in 1993. Country names that have changed are depicted by their most recent name. Entries that show countries that have merged are generally depicted by the name of the successor state. Examples include Germany since 1990 and Yemen since 1990. However, for some countries, data on immigration from, or emigration to, Hong Kong Special Administrative Region of China, Macao Special Administrative

Region of China and Taiwan, Province of China are not included under China, but shown separately.

Columns D and E: Entries under “AreaName” indicate the major area to which the countries listed in column C belong. The numerical codes listed under “AREA” follow the standard M49 codes used by the United Nations Secretariat. These codes coincide with those set by the International Organization for Standardization as part of the ISO 3166 standard.

Columns F and G: Entries under “RegName” indicate the region to which the countries listed in column C belong. The numerical codes listed under “REG” follow the standard M49 codes used by the United Nations Secretariat. These codes coincide with those set by the International Organization for Standardization as part of the ISO 3166 standard.

Columns H and I: Entries under “DevName” indicate the development group to which the countries listed in column C belong. The numerical codes listed under “DEV” follow the standard M49 codes used by the United Nations Secretariat. Migrants reported under the category of “USSR (former)” have been included in the more developed regions.

3. Lay-out of the “Total” worksheets

The workbook “UN_MigFlow_Totals_2010.xls” contains three worksheets with the total number of immigrants and, when available, emigrants and net migration. The first worksheet provides information by country of residence, the second by country of citizenship and the third one by birth.

Column A: Entries under “CntName” show the reporting country.

Column B: Entries under “Type” indicate whether the totals refer to immigrants, to emigrants or to net migration.

Column C: Entries under “Coverage” indicate whether the totals refer to foreigners, to citizens or to both groups combined.

Column D: Entries under “DevName” provide sub-totals for the number of immigrants, and, when available, the number of emigrants and the level of net migration, by development group. Migrants reported under the category of “USSR (former)” have been included in the more developed regions.

D. DESCRIPTION OF COUNTRY DATA

Armenia: Immigration and emigration data are collected through statistical forms that are completed by citizens as well as by foreigners with valid residence permits at police offices once they register or deregister their residence. These forms are then forwarded to the national statistical office for further data processing. The immigration data cover citizens and foreigners who intend to stay for more than three months. The emigration data cover persons who deregistered their place of residence in Armenia.

Australia: Data on international migration are obtained from incoming or outgoing passenger cards completed at the border. The data series by country of birth refers only to permanent movements, while the data series by country of residence includes both long-term and permanent movements. The data series by country of birth refers to the fiscal year, from first July of the year shown to 30 June of the following year. For 1976 to 2003, data reflect overseas arrivals and departures showing the number of permanent and long-term arrivals to Australia and permanent and long-term departures abroad. Permanent arrivals

(settlers) include persons holding a permanent visa, a temporary (provisional) visa with a clear intention to settle, citizens from New Zealand who indicate an intention to settle, and persons who are otherwise eligible to settle, for instance children of Australian citizens who were born abroad. Long-term arrivals include persons who intend to stay in Australia or abroad but not permanently. Emigration data report permanent and long-term departures. Permanent departures include Australian residents (including former settlers) who state at their departure that they are departing permanently. Long-term departures cover persons who intended to stay abroad for one year or more but not permanently. For 1976 to 1984, the emigration data refer to the number of former settlers departing. From 1985 onwards, the emigration data refer to all residents departing for one year or more or permanently from Australia. Short-term movements and changes of status (in terms of residence permit held) are not included in the series. From 2004 onwards, migration data are based on a new estimation method introduced by the Australian Bureau of Statistics (ABS) in 2007, the net overseas migration (NOM). NOM reports the actual number of persons moving and not the number of movements (arrivals/departures) as did the overseas arrivals and departures statistics. Based on individual characteristics of travellers that are now captured in the Traveller's Characteristics Database, multiple movements of the same traveller are excluded from the statistics. ABS reported that in the financial year 2006-2007 there were over 10 million multiple movements accounting for 44 per cent of all movements. The new estimation method also refers to the travellers' actual stay or absence and not to the intended duration of stay or absence the traveller states on his or her passenger card. The individual's actual travel behaviour is measured using the '12/16 month rule' where the traveller can be added or subtracted from NOM if he or she has actually stayed in or has been absent from Australia for a period of 12 months or more over a 16-month period. The period of 12 months does not have to be continuous.

Austria: International migration data are derived from population registers and are available since 1996. The immigration data refer to the number of persons who register in order to establish their main place of residence in Austria. Emigration data refer to persons who leave the country in order to reside abroad. For the period 1996 to 2001, Austrian statistics did not specify a minimum length of stay for persons to be considered international migrants. From 2002 onwards, persons are considered international migrants if they intend to stay or leave for at least 90 days. Due to the high number of unknown countries of previous or next residence for Austrian citizens, the *2010 Revision* includes only data on the immigration and emigration of foreigners by country of previous or future residence. The data series by citizenship cover both citizens and foreigners.

Azerbaijan: Immigration and emigration data are collected through statistical forms that are filled out during the process of registration at police offices and are submitted for processing to the national statistical office. Persons moving more than once a year are recorded as an international migrant multiple times. Immigrants refer to persons with permission to enter the country for permanent residence and emigrants refer to persons who leave the country and intend to establish their permanent residence abroad. Emigration from countries outside the Commonwealth of Independent States (CIS) for the period 1995 to 1997 include persons 18 years or over only.

Belarus: Immigration and emigration data are collected through statistical forms at the point of registration by the ministry of interior for persons arriving or departing. Immigration data include citizens as well as foreigners with residence permits who registered their permanent residence in Belarus upon arrival. Emigration data refer to citizens and foreigners who deregister their permanent residence to move abroad.

Belgium: The main source of international migration statistics is the population register. The statistics on immigration refer to the legal entry of foreigners who intend to stay in the country for at least three months as well as citizens who intend to stay in the country for at least three months. The statistics on emigration include all persons departing with the intention to stay abroad for at least three months. Emigration data are subject to administrative corrections.

Bulgaria: International migration data for citizens are derived from the population register and for foreigners they are derived from residence permits. The data on international migration only include persons who have declared their change of residence to the administrative authorities. Immigration data refer to citizens who register their residence in Bulgaria and foreigners who receive a permanent residence permit for Bulgaria. Emigration data refer to persons who deregister their residence in Bulgaria to move abroad. Often Bulgarian citizens living abroad declare their emigration when applying for Bulgarian identification documents in their new country of destination. Their departure is then reported for the year they declared their change of residence and not for the year they actually left Bulgaria.

Canada: International migration data are derived from administrative sources recording foreigners who were granted permission to reside permanently in Canada. Canada does not gather data on emigration. Since 1980, the annual number of immigrants is subject to administrative corrections made by Citizenship and Immigration Canada.

Croatia: International migration data are generated by the population register. The immigration data include citizens and foreigners who have established permanent residence in Croatia and whose previous place of permanent residence was outside the country. An emigrant is defined as a person who cancelled his or her permanent residence in Croatia with the intention of residing abroad.

Cyprus: Migration statistics are based on a passenger survey conducted among airline passengers upon arrival in Cyprus and before departure abroad. For sea passengers, basic information is collected from passenger manifests using systematic sampling. Immigrants include persons who enter Cyprus with the intention to settle for one year or more. Emigrants include Cypriots and foreigners who have left Cyprus with the intention to settle abroad for one year or more. Emigration data include persons who depart from Cyprus after having stayed for more than one year after their employment contract has expired and international students having completed their studies in Cyprus and returning home. The data series for long-term immigrants is available from 1997 and for long-term emigrants from 2002 onwards.

Czech Republic: International migration data are obtained from the population register and permit data. Immigration data report the number of persons who register their permanent or long-term residence in the Czech Republic. Foreigners from the European Economic Area (EEA) who stay for a period of at least three months and citizens of other countries who have been granted a one-year permit are also included. Emigration data refer to persons who cancel their permanent residence in the Czech Republic in order to move abroad as well as foreigners whose residence permits have expired.

Denmark: International migration statistics are derived from the central population register. Citizens from the EEA and Switzerland who move to Denmark are counted as immigrants if their stay in Denmark is to last at least six months. Citizens from countries outside the Nordic region, the EEA and Switzerland are counted as immigrants if they intend to stay for at least three months and hold a valid residence permit. Data on emigration include all foreigners and citizens leaving Denmark for a period of at least six months. The time criterion applied for emigration to another Nordic country depends on rules established by the receiving country. The emigration data are subject to administrative corrections.

Estonia: The population register is the source of data on international migration. Immigration data include persons who have changed their country of permanent residence for a period that is expected to last at least one year and who have registered their arrival in Estonia. Emigration data cover all persons who change their country of residence for a period that is expected to last at least one year and who have registered their departure from Estonia. For quality reasons, Statistics Estonia only publishes data from 2004 onwards.

Finland: International migration data in Finland are derived from the population register and cover all persons who change their country of permanent residence. The statistics on immigration include all foreigners who have obtained a residence permit for at least one year as well as Finish citizens who have returned after having resided abroad. The statistics on emigration include all residents departing who intend to stay abroad for at least one year. For Nordic citizens who move to another Nordic country, the time criterion for being counted as an emigrant depends on the registration criterion applied by the immigration country.

France: Since 1994, immigration data in France are derived from a centralized register of residence permits. The statistics refer to the number of foreigners who obtain a residence permit for one year or more. The data were estimated by the Institut national d'études démographiques (INED) in order to conform to the definition of a long-term migrant recommended by the United Nations. The estimates include minors who are admitted under family reunification provisions, but who do not receive an individual residence permit. The estimates also include the number of foreigners from EEA countries who do not require a residence permit. France does not collect data on emigration.

Germany: International migration data in Germany are derived from the population register. The data before 1991 refer to the former Federal Republic of Germany. The data on immigration refer to persons arriving from abroad who register their dwelling as their only or main place of residence in Germany. The immigration data include all foreigners who hold a residence permit. The emigration data refer to persons leaving the country to establish their only or main residence abroad. The data on immigrating citizens include persons of German descent who moved to Germany and who have the right to German citizenship (*Aussiedler*) as well as citizens from the former Democratic Republic of Germany who moved to the former Federal Republic of Germany (*Uebersiedler*). Because there is no minimum residence requirement, persons moving more than once a year are recorded multiple times as an international migrant.

Greece: The source of immigration data are residence permits. The immigration data reflect the number of residence permits issued to foreigners. Greece does not publish data on the migration of citizens and on the emigration of foreigners.

Hungary: International migration data for foreigners are derived from the number of residence or settlement permits issued to foreigners. Foreign immigrants are defined as persons who have applied for a residence or settlement permit. Residence permits are usually valid for one year. Foreigners can apply for a settlement permit after having legally and continuously resided in the country for at least three years. A foreigner emigrating is defined as a person who has a residence permit or settlement permit and who has left Hungary without intending to return, a foreigner whose permit has expired and has not applied for extension or someone whose permit was invalidated by the authorities. For Hungarian citizens data are derived from a centralised population register. Immigrating citizens cover persons who register their residence in Hungary with the intention to stay in Hungary for three months or more. Data on emigrating citizens cover persons who deregister their residence with the intention to live abroad for three months or more.

Iceland: Statistics on international migration are derived from the population register. Persons staying or intending to stay for six months or more must register their permanent residence in Iceland. Registration is optional for persons staying or intending to stay between three and six months because of work or study. Data on emigration refer to persons intending to move their permanent residence abroad. The Nordic Treaty on Public Registration stipulates a minimum period of stay of six months in order to qualify as an immigrant and a minimum period of absence of six months in order to qualify as an emigrant. The time criterion applied for emigration to another Nordic country depends on rules established by the receiving country.

Ireland: The principal source of information for the estimation of the annual migration flow data is a quarterly national household survey. The migration estimates are compared with information from other sources, including the personal public service number allocated to non-Irish citizens, work permits that have been issued and asylum applications that have been lodged. The migration flows represent movements over a twelve months period starting in mid-April. Immigrants are defined as individuals who are usual residents of Ireland and did not usually live in the country twelve months ago. Emigrants are defined as individuals who usually lived in the household in the previous year but are now living abroad.

Israel: Immigration data are derived from forms filled out at border checkpoints, which are transferred to the population register. Immigration data cover foreign immigrants entering the country with the intention to take up permanent residence as well as persons who are entitled to an immigrant visa or certificate and who want to stay in Israel for up to three years to examine the possibility of settling (“potential immigrants”). Changes in visa status from tourist to immigrant or potential immigrant are recorded in the year in which the status was changed.

Italy: International migration data are generated from the population register. The statistics on immigration include Italian citizens who move into a dwelling after having resided abroad. Foreigners from EEA member countries are included in the statistics if their intended stay is one year or more. Citizens from non-EEA countries holding a residence permit of at least one year should also register. The statistics on emigration refer to all residents departing with the intention of establishing their residence abroad for one year or more. Since relatively few countries of origin or destination are shown in the tabulations prior to 1995, sub-totals at the regional level markedly underestimate the number of migrants from or to those regions.

Kazakhstan: Data on international migration are based on tabulations of statistical forms filled out by government offices upon arrival and departure of migrants. Immigration data refer to citizens as well as to foreigners holding a residence permit who register their place of residence in Kazakhstan and intend to stay for six months or more. Emigration data cover citizens and foreigners who deregister their place of residence in Kazakhstan to move abroad.

Kyrgyzstan: Data are derived from statistical forms collected by the ministry of interior when migrants register or deregister their place of residence. Immigration data refer to citizens and foreigners holding a residence permit who register their place of residence in Kyrgyzstan and intend to stay for six months or more. Emigration data cover citizens and foreigners who cancel their registration at their place of residence in Kyrgyzstan to move abroad.

Latvia: The source of international migration data is the population register. Data on immigration and emigration refer to persons who intend to change their country of residence for one year or more.

Lithuania: International migration data are derived from the population register. Immigration statistics refer to persons who arrive from abroad with the intention to reside in the country for a period of at least six months. In addition, foreigners should hold a residence permit valid for one year or longer. Emigration statistics refer to persons who have declared — at the time of their departure— that they intend to stay abroad for at least six months or more. The official emigration statistics are based on the number of persons who have declared their intention to emigrate, which underestimates actual emigration. Statistics Lithuania estimates that the level of undeclared emigration exceeded declared emigration during 2001-2006. Undeclared emigration had decreased to 37 per cent of total emigration in 2009.

Luxembourg: International migration data are generated by the population register. Immigration statistics include foreigners entering the country with the intention of establishing residence. Emigration statistics cover all foreigners who leave the country with the intention of establishing residence abroad.

The international migration statistics do not distinguish between permanent and temporary immigrants or emigrants. However, the figures exclude visitors, that is, non-residents who intend to stay in the country for up to three months without exercising a remunerated activity as well as border workers, that is, persons residing in border regions who need to cross the border frequently in order to exercise a remunerated activity. Data are classified by country of residence up to 1989 and by country of citizenship since 1990.

Netherlands: International migration data are derived from the municipal population register. Until September 1994, the statistics on immigration included foreigners who held a residence permit and intended to stay in the country for more than 180 days as well as citizens who intended to stay in the country for at least 30 days. Statistics on emigration included all citizens and foreigners who intended to leave the Netherlands for a period exceeding 360 days. Since October 1994, persons who wish to stay in the country for at least four months are considered immigrants, while persons leaving the country for at least eight months are considered emigrants. The emigration data include administrative corrections. Asylum-seekers who are not staying in reception centres are included. Dutch citizens include persons from Suriname who opted for Dutch nationality when their country became independent in 1976 and who migrated subsequently to the Netherlands. Regional aggregates for 1970 to 1972 are significantly underestimated owing to the limited number of countries of origin and destination used in classifying migration statistics.

New Zealand: International migration statistics are derived from arrival and departure cards completed at the border. The data series by country of birth refers to permanent movements before 1985 and are classified by fiscal year, which runs from 1st April of the year shown to 31st March of the next year. The immigration data refer to persons arriving from overseas who intend to stay for a period of one year or more, or permanently, including residents from New Zealand who are returning after an absence of one year or more. Emigrants include residents departing for an intended period of stay abroad of one year or more, or permanently, as well as overseas visitors departing from New Zealand after a stay of one year or more. Immigration data include students and those on working and holiday visas or permits who stay for more than one year, although they initially did not intend to stay for one year or longer.

Norway: International migration data are obtained from the population register. Statistics on immigration refer to all persons who wish to stay in the country for at least six months. The statistics on emigration include all residents leaving Norway for at least six months. The time criterion applied for emigration to another Nordic country depends on rules established by the receiving country.

Poland: Immigration data are collected through forms that are completed when persons register or deregister their permanent residence in Poland. Since 2006, data are captured directly from the population register. Immigration refers to persons arriving from abroad who establish their permanent residence in the country, while emigration refers to persons who are leaving the country in order to establish their permanent residence abroad.

Portugal: Immigration data are derived from permit data. Immigration data cover foreigners who, in a given year, have applied for a resident permit. Foreigners submitting their first application for residence permits are considered as long-term immigrants. Residence permits can be temporary (valid for one year and renewable for periods of two years) or permanent (for those having a temporary permit for at least 5 years; it has no validity limit but should be renewed every 5 years). Portugal does not publish a continuous data series on the migration of citizens or on the emigration of foreigners.

Republic of Moldova: International migration data are derived from the population register. Immigration data refer to foreigners who obtain the right for permanent or temporary residence in the Republic of Moldova and register their residence. Emigration data refer to citizens of the Republic of Moldova who move permanently or temporarily abroad.

Romania: The source of international migration data is the population register and the foreigner register. Immigration data refer to persons arriving from abroad who take up their residence in Romania with a intended duration of stay of at least one year. Emigration data refer to persons who establish their residence abroad and intend to stay abroad for one year or more.

Russian Federation: Data on international migration are collected primarily through statistical forms that are completed while person register or deregister at the place of residence. Officially reported international migration overestimates actual migration as the same person may change his or her place of residence more than once during a given year. Immigration data refer to arrivals of persons who register their place of residence in the Russian Federation. In order to deregister, foreigners must hold temporary or permanent residence permits. Emigration data refer to departures of person who establish their residence abroad. Before 1997, immigration and emigration from countries outside the Commonwealth of Independent States (CIS) was only reported for persons admitted for permanent residence and for persons permitted to depart to settle abroad.

Slovakia: The foreigner register of the ministry of interior is the administrative source of data on migration of foreigners. Migration data for citizens are collected when persons register or deregister for the purpose of changing their country of residence. The registration forms are sent directly to the national statistical office. The data series by country of residence refer to permanent migration over the whole time period covered, while the data series by citizenship refer to permanent migration until 2002 and to long-term migration as of 2003. Permanent immigration data include all persons arriving from abroad who register their permanent residence in the country. Permanent emigration data include all residents who deregister as permanent residents in Slovakia in order to move abroad. Long-term immigrants are defined as persons who register their usual residence for a period that is, or is expected to be, at least one year, having previously resided in another country. Long-term emigrants are defined as persons who have cancelled their usual residence in Slovakia for a period that is, or is expected to be, of one year.

Slovenia: Data on international migration are derived from the population and the foreigner register. From 2008 onwards, statistical definitions of international migrants are based on the concept of usual residence and are harmonized with definitions of population and migrants from the European Union Regulation (EC) No 862/2007 of the European Parliament and of the Council on community statistics on migration and international protection⁵. Since 2008, data on immigration refer to persons who register their usual residence in Slovenia and intend to stay for at least one year. Data on emigration are based on persons who deregister their residence and intend to stay abroad for at least one year. Before 2008, data on immigration included all persons arriving from abroad who intend to reside in the country for at least three months. Before 2008, data on the emigration of foreigners were estimated by the national statistical office on the basis of the number of foreigners present at the beginning and at the end of the calendar year. In addition, the number of births, deaths, arrivals and citizenship acquisitions of foreigners during each year were taken into consideration. The emigration statistics were corrected using information on residence permits that had expired. Citizens were included in the emigration statistics if they gave notice of leaving the country with the intention of residing abroad for more than three months. Before 1998, the emigration data excluded citizens who emigrated for more than three months, but not permanently, while the immigration data excluded citizens who returned to Slovenia after temporarily residing abroad.

Spain: Data on international migration are obtained from the municipal population register. Spain has produced immigration data by country of previous residence since 1983. Emigration data by country of next residence are available since 2002. The statistics on immigration include foreigners and citizens intending to

⁵ European Union, Regulation (EC) No 862/2007 of the European Parliament and of the Council of 11 July 2007 on Community statistics on migration and international protection and repealing Council Regulation (EEC) No 311/76 on the compilation of statistics on foreign workers, 11 July 2007, No 862/2007, available at: <http://eur-lex.europa.eu/LexUriServ/LexUriServ.do?uri=CELEX:32007R0862:EN:NOT;>(accessed 23 August 2011).

establish residence in Spain. Since 2000, all immigrants, regardless of their legal status, are allowed to register. Data on emigration refer to persons leaving Spain with the intention of establishing residence abroad. Before 2004, international migration statistics did not include migrants whose country of residence was unknown. Since 2006, the emigration data include foreigners from outside the EU who do not hold permanent residence permits and who fail to re-register every two years. Because there is no minimum residence requirement, persons moving more than once a year are recorded multiple times as international migrants.

Sweden: International migration data are derived from the population register. The statistics on immigration include citizens and foreigners arriving from abroad intending to stay in the country for a year or longer. Foreigners must hold a valid residence permit. The statistics on emigration include all foreigners and citizens leaving the country with the intention of staying abroad for one year or longer. The time criterion applied for emigration to another Nordic country depends on rules established by the receiving country.

Switzerland: International migration data are derived from the population and foreigner register. Since 1991, the Swiss federal statistical office has compiled statistics on foreigners using various data sources. The immigration data cover all persons arriving from abroad to establish permanent or temporary residence in Switzerland, including citizens and permanent, temporary and short-term foreign residents holding a residence permit valid for at least one year. Emigrants are persons departing from the country in order to establish permanent or temporary residence abroad.

Ukraine: Data are derived from statistical forms processed by the ministry of interior at the time a migrant registers or deregisters his or her place of residence. Immigration data cover all citizens and foreigners holding a residence permit who take up residence in the Ukraine for more than six months. Emigration data include all persons leaving the Ukraine for six months or more to establish residence abroad.

United Kingdom: Migration flows are estimated on the basis of the International Passenger Survey (IPS), a sample survey of passengers arriving at and departing from the main United Kingdom air and sea ports and the Channel Tunnel. Prior to 1991, the IPS excluded certain migrant categories, such as movements between the United Kingdom and Ireland, persons seeking asylum after having entered the country, and short-term visitors granted extensions of stay. The data on immigration include persons who have resided abroad for one year or more and who state on arrival their intention to stay in the United Kingdom for one year or more. The data on emigration include persons who have resided in the United Kingdom for one year or more and who state on departure their intention to stay abroad for one year or more. In 2005, the Office for National Statistics revised migration estimates retrospectively from 1991 onwards. Since the regional groupings used to classify the origin and destination of international migrants could not be harmonized with United Nations practices, the original groupings have been maintained.

United States of America: Immigration data are based on the number of foreigners granted permanent residence status and are reported by fiscal year. Before 1976, the fiscal year started on 1 July of the year shown and ran until 30 June of the following year. Since 1976, the fiscal year starts on 1 October of the year shown and runs until 30 September of the following year. Because of the transition, fiscal year 1976 includes an extra quarter. The United States does not collect data on immigrating citizens or on emigration. Persons legalized under the provisions of the Immigration Reform and Control Act of 1986 (IRCA) are included in the statistics presented.

ANNEX I
OVERVIEW OF TIME CRITERIA AND SOURCES FOR MIGRATION STATISTICS

Country	Type	Permanent residence	Intended or actual stay of			Other time criterion	No time criterion	Source
			At least one year	At least six months	At least three months			
Armenia	Immigration				x		Statistical forms	
	Emigration					x		
Australia ^a	Immigration		x				Border statistics	
	Emigration		x					
Austria ^b	Immigration				x		Population register	
	Emigration				x			
Azerbaijan	Immigration	x					Statistical forms	
	Emigration	x						
Belarus	Immigration	x					Statistical forms	
	Emigration	x						
Belgium	Immigration				x		Population register	
	Emigration				x			
Bulgaria	Immigration	x					Population register/ Permits	
	Emigration	x						
Canada	Immigration	x					Permits	
	Emigration		No data available					
Croatia	Immigration	x					Population register	
	Emigration	x						
Cyprus	Immigration		x				Border statistics	
	Emigration		x					
Czech Republic ^c	Immigration	x	x		x		Population register/ Permits	
	Emigration	x						
Denmark ^d	Immigration			x	x		Population register	
	Emigration			x				
Estonia	Immigration		x				Population register	
	Emigration		x					
Finland	Immigration		x				Population register	
	Emigration		x					
France	Immigration		x				Permits	
	Emigration							
Germany	Immigration					x	Population register	
	Emigration					x		
Greece ^e	Immigration					x	Permits	
	Emigration		No data available					

Annex I (continued)

Country	Type	Permanent residence	Intended or actual stay of			Other time criterion	No time criterion	Source
			At least one year	At least six months	At least three months			
Hungary ^f	Immigration		x		x			Population register/ Permits
	Emigration				x		x	
Iceland ^g	Immigration			x				Population register
	Emigration						x	
Ireland	Immigration						x	Household survey
	Emigration						x	
Israel ^h	Immigration	x				x		Border statistics
	Emigration		No data available					
Italy	Immigration		x					Population register
	Emigration		x					
Kazakhstan	Immigration			x				Statistical forms
	Emigration						x	
Kyrgyzstan	Immigration			x				Statistical forms
	Emigration						x	
Latvia	Immigration		x					Population register
	Emigration		x					
Lithuania	Immigration			x				Population register
	Emigration			x				
Luxembourg	Immigration						x	Population register
	Emigration						x	
Netherlands ⁱ	Immigration					x		Population register
	Emigration					x		
New Zealand ^j	Immigration		x					Border statistics
	Emigration		x					
Norway	Immigration			x				Population register
	Emigration			x				
Poland	Immigration	x						Population register
	Emigration	x						
Portugal	Immigration	x				x		Permits
	Emigration		No data available					
Republic of Moldova ^l	Immigration						x	Population register
	Emigration						x	
Romania	Immigration		x					Population/ Foreigner register
	Emigration		x					

Annex I (continued)

Country	Type	Permanent residence	Intended or actual stay of			Other time criterion	No time criterion	Source
			At least one year	At least six months	At least three months			
Russian Federation	Immigration						x	Statistical forms
	Emigration						x	
Slovakia ^m	Immigration	x	x					Statistical forms/ Foreigner register
	Emigration	x	x					
Slovenia ⁿ	Immigration		x					Population/ Foreigner register
	Emigration		x					
Spain	Immigration						x	Population register
	Emigration						x	
Sweden	Immigration		x					Population register
	Emigration		x					
Switzerland	Immigration		x					Population/ foreigner register
	Emigration						x	
Ukraine	Immigration			x				Statistical forms
	Emigration			x				
United Kingdom	Immigration		x					Border statistics
	Emigration		x					
United States of America	Immigration	x						Permits
	Emigration				No data available			

^a Since 2004, data are based on the actual duration of stay. Permanent migration flows are reported in the data series by country of birth.

^b No time criterion specified before 2002.

^c For citizens: permanent residence. For non-EEA citizens: at least one year. For EEA citizens: at least three months.

^d Citizens from EEA and Switzerland: at least six months. Citizens from other countries: at least three months.

^e Issuance of residence permits.

^f For immigrating citizens: three months. For immigrating foreigners: one year. For emigrating citizens: three months. For emigrating foreigners: no time criteria specified.

^g Registration is optional for persons staying for three to six months for the purpose of work or study.

^h The data series include permanent residents as well as "potential immigrants", who obtain a residence permit for up to three years.

ⁱ For immigrants: four months. For emigrants: eight months.

^j Before 1985, the data series by country birth include only permanent flows.

^k Application for residence permits. Permanent residence permits are either valid for two years or permanently.

^l Foreigners need temporary (valid for less than one year) or permanent residence permit.

^m Since 2003 long-term (one year) data are available. Permanent migration data are available since 1993.

ⁿ Until 2008 three months.

ANNEX II
CONTENT OF THE DATASET

Coverage: C = Citizens; F = Foreigners; B = Both (citizens and foreigners combined)

Country	By country of residence				By citizenship				By country of birth			
	Immigrants	Emigrants	Net migration	Coverage	Immigrants	Emigrants	Net migration	Coverage	Immigrants	Emigrants	Net migration	Coverage
Armenia	2000-2009	2000-2009	2000-2009	B	2007-2009	2007-2009	2007-2009	F, C	-	-	-	-
Australia	1976-2008	1976-2008	1976-2008	F, C	-	-	-	-	1959-2009	1959-2009	1959-2009	B
Austria	1996-2009	1996-2009	1996-2009	F	1996-2009	1996-2009	1996-2009	F, C	-	-	-	-
Azerbaijan	1995-2009	1995-2009	1995-2009	B	-	-	-	-	-	-	-	-
Belarus	2000-2009	2000-2009	2000-2009	B	-	-	-	-	-	-	-	-
Belgium	-	-	-	-	1960-2007	1960-2007	1960-2007	F, C	-	-	-	-
Bulgaria	2007-2009	2007-2009	2007-2009	B	2007-2009	2007-2009	2007-2009	F, C	-	-	-	-
Canada	1964-2009	-	-	F	1965-2009	-	-	F	1961-2009	-	-	F
Croatia	1992-2009	1992-2009	1992-2009	B	1998-2009	1998-2009	1998-2009	F, C	-	-	-	-
Cyprus	2002-2009	2002-2009	2002-2009	B	2002-2009	2002-2009	2002-2009	F, C	-	-	-	-
Czech Republic	1993-2007	1993-2007	1993-2007	B	1999-2009	1999-2009	1999-2009	F, C	-	-	-	-
Denmark	1980-2009	1980-2009	1980-2009	F, C	1980-2009	1980-2009	1980-2009	F, C	-	-	-	-
Estonia	2004-2009	2004-2009	2004-2009	B	2004-2009	2004-2009	2004-2009	F, C	-	-	-	-
Finland	1980-2009	1980-2009	1980-2009	F, C ^a	1983-2009	1983-2009	1983-2009	F, C	-	-	-	-
France	-	-	-	-	1994-2008	-	-	F	-	-	-	-
Germany	1965-2009	1965-2009	1965-2009	F, C ^b	1962-2009	1962-2009	1962-2009	F, C	-	-	-	-
Greece	-	-	-	-	2007-2008	-	-	F	-	-	-	-
Hungary	-	-	-	-	1995-2008	1995-2008	1995-2008	F, C	-	-	-	-
Iceland	1986-2010	1986-2010	1986-2010	F, C	1986-2010	1986-2010	1986-2010	F, C	-	-	-	-
Ireland	1987-2010	1987-2010	1987-2010	B	2003-2010	2006-2010	2006-2010	F, C	-	-	-	-
Israel	1995-2009	-	-	F	-	-	-	-	1995-2009	-	-	F
Italy	1986-2008	1986-2008	1986-2008	F, C ^c	1991-2008	1991-2008	1991-2008	F, C	-	-	-	-
Kazakhstan	2000-2009	2000-2009	2000-2009	B	-	-	-	-	-	-	-	-
Kyrgyzstan	1990-2008	1990-2008	1990-2008	B	-	-	-	-	-	-	-	-
Latvia	1995-2009	1995-2009	1995-2009	B	1998-2009	1998-2009	1998-2009	F, C	-	-	-	-
Lithuania	2000-2009	2000-2009	2000-2009	B	2000-2009	2000-2009	2000-2009	F, C	-	-	-	-
Luxembourg ^d	-	-	-	-	1980-2009	1980-2009	1980-2009	F	-	-	-	-
Netherlands	2000-2009	2000-2009	2000-2009	F, C	1960-2009	1960-2009	1960-2009	F, C	1995-2009	1995-2009	1995-2009	B

Annex II (continued)

Country	By country of residence				By citizenship				By country of birth			
	Immigrants	Emigrants	Net migration	Coverage	Immigrants	Emigrants	Net migration	Coverage	Immigrants	Emigrants	Net migration	Coverage
New Zealand	1979-2010	1979-2010	1979-2010	F, C	1980-2009	1980-2009	1980-2009	F, C	1950-2010	1950-2010	1950-2010	B
Norway	1980-2009	1980-2009	1980-2009	F, C ^e	1980-2009	1980-2009	1980-2009	F, C	-	-	-	-
Poland	1999-2009	1999-2009	1999-2009	B	1999-2009	1999-2009	1999-2009	F, C	-	-	-	-
Portugal	-	-	-	-	1992-2009	-	-	F	-	-	-	-
Republic of Moldova	-	2000-2010	-	C	1993-2010	-	-	F	-	-	-	-
Romania	1994-2009	1990-2009	1994-2009	B	1991-2009	1990-2009	1991-2009	F, C	-	-	-	-
Russian Federation	1991-2010	1991-2010	1991-2010	B	2002-2008	2002-2008	2002-2008	F, C	-	-	-	-
Slovakia	1993-2009	1993-2009	1993-2009	B	2001-2009	2001-2009	2001-2009	F, C	-	-	-	-
Slovenia	-	-	-	-	1996-2009	1996-2009	1996-2009	F, C	-	-	-	-
Spain	1983-2010	2002-2010	2002-2010	F, C	1998-2010	2002-2010	2002-2010	F, C	-	-	-	-
Sweden	1960-2010	1960-2010	1960-2010	B	2000-2010	2000-2010	2000-2010	F, C	2000-2010	2000-2010	2000-2010	B
Switzerland	-	-	-	-	1991-2009	1991-2009	1991-2009	F, C	-	-	-	-
Ukraine ^f	2000-2008	2000-2008	2000-2008	B	2000-2006	2000-2006	2000-2006	F, C	-	-	-	-
United Kingdom	1960-2009	1960-2009	1960-2009	B	1991-2009	1991-2009	1991-2009	F, C	1991-2009	1991-2009	1991-2009	B
United States	2000-2010	-	-	F	-	-	-	-	1946-2010	-	-	F

^a The distinction between foreigners and citizens is available since 1987.

^b Before 1970, foreigners only

^c The distinction between foreigners and citizens is available since 1995.

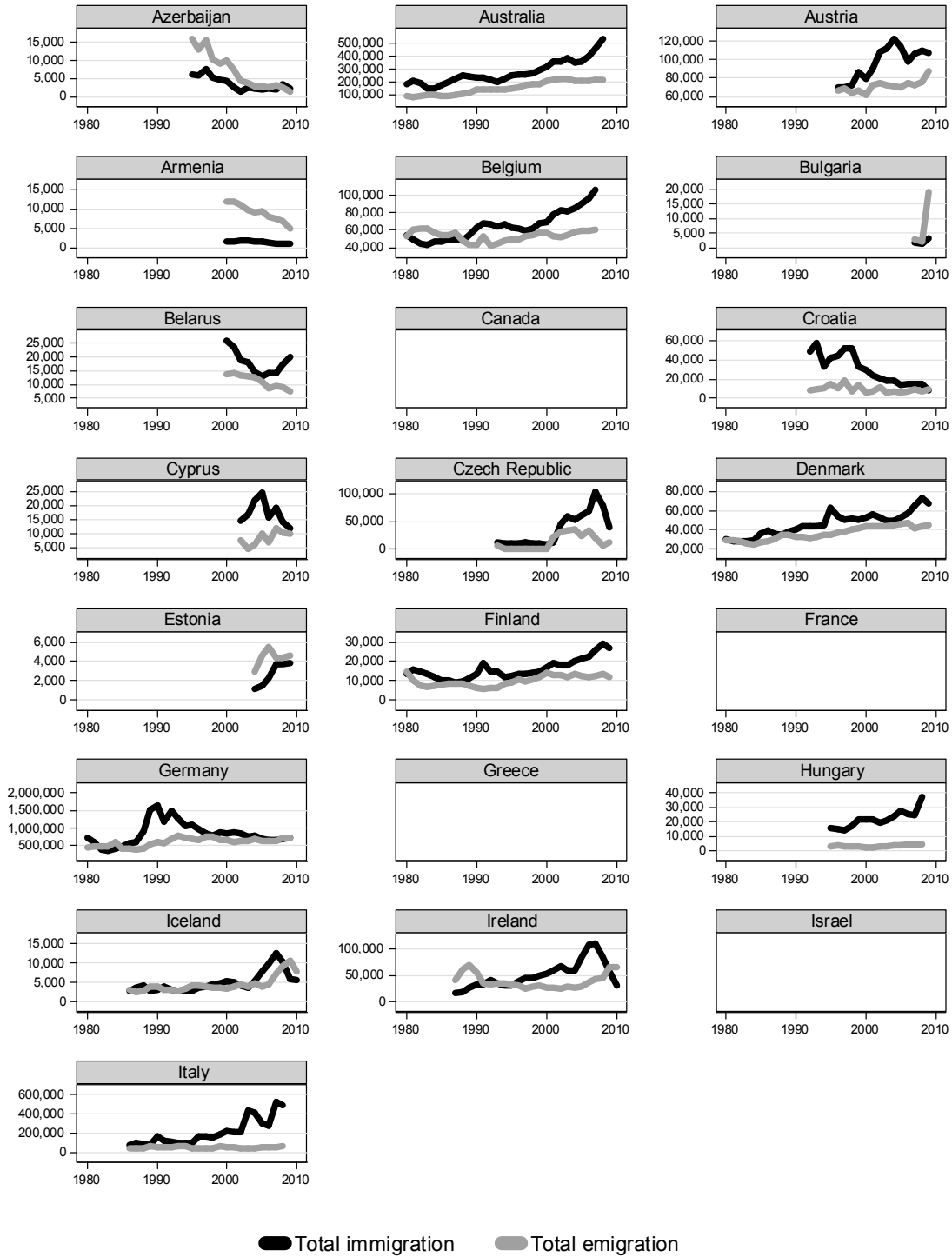
^d Data before 1990 are classified by country of residence.

^e The distinction between foreigners and citizens is available since 1986.

^f For 2007 and 2008 only totals available.

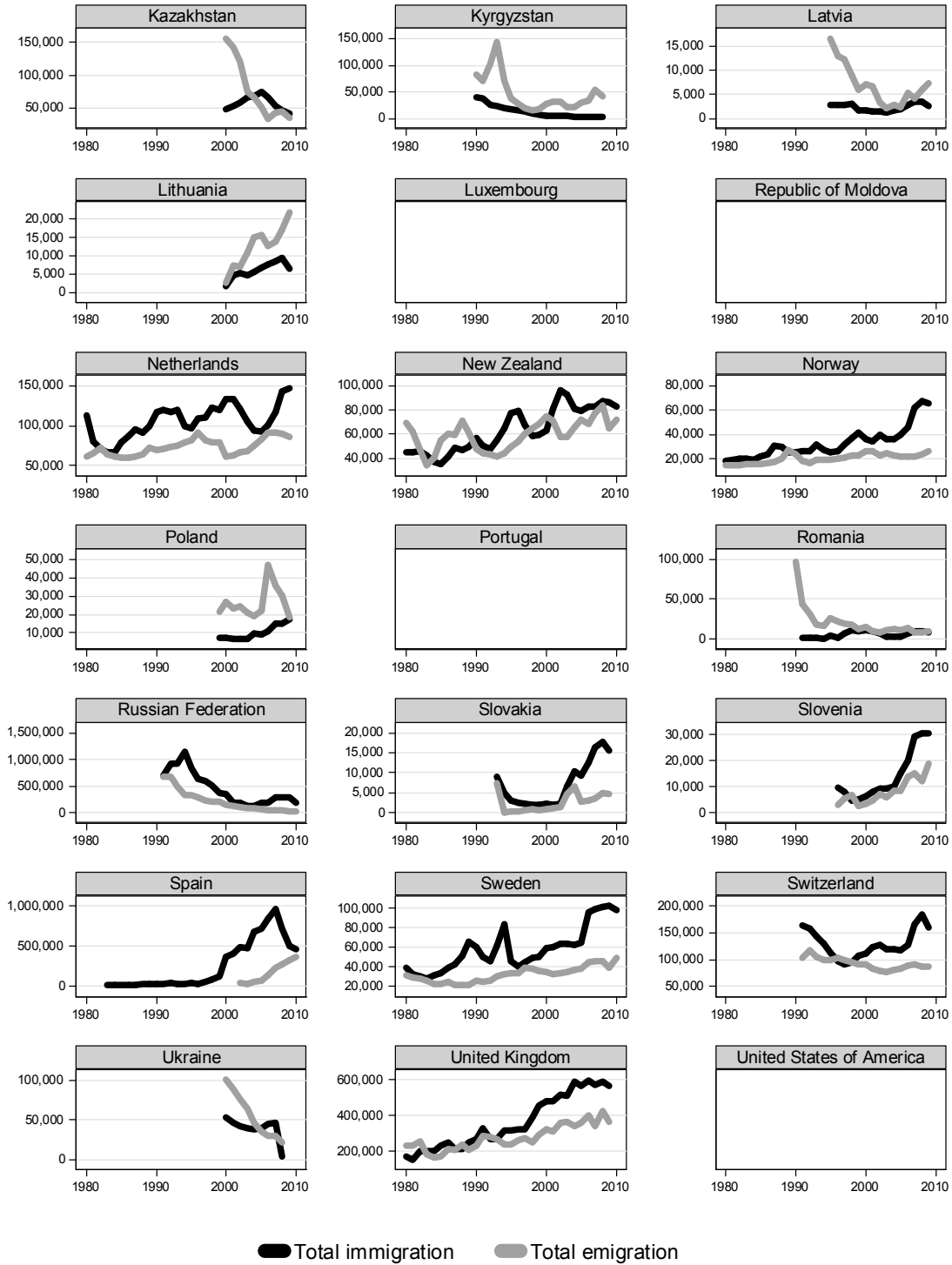
ANNEX III MIGRATION TRENDS SINCE 1980: TOTAL IMMIGRATION AND EMIGRATION

Note: The trends are displayed only when both the number of foreigners and the number of citizens were available.



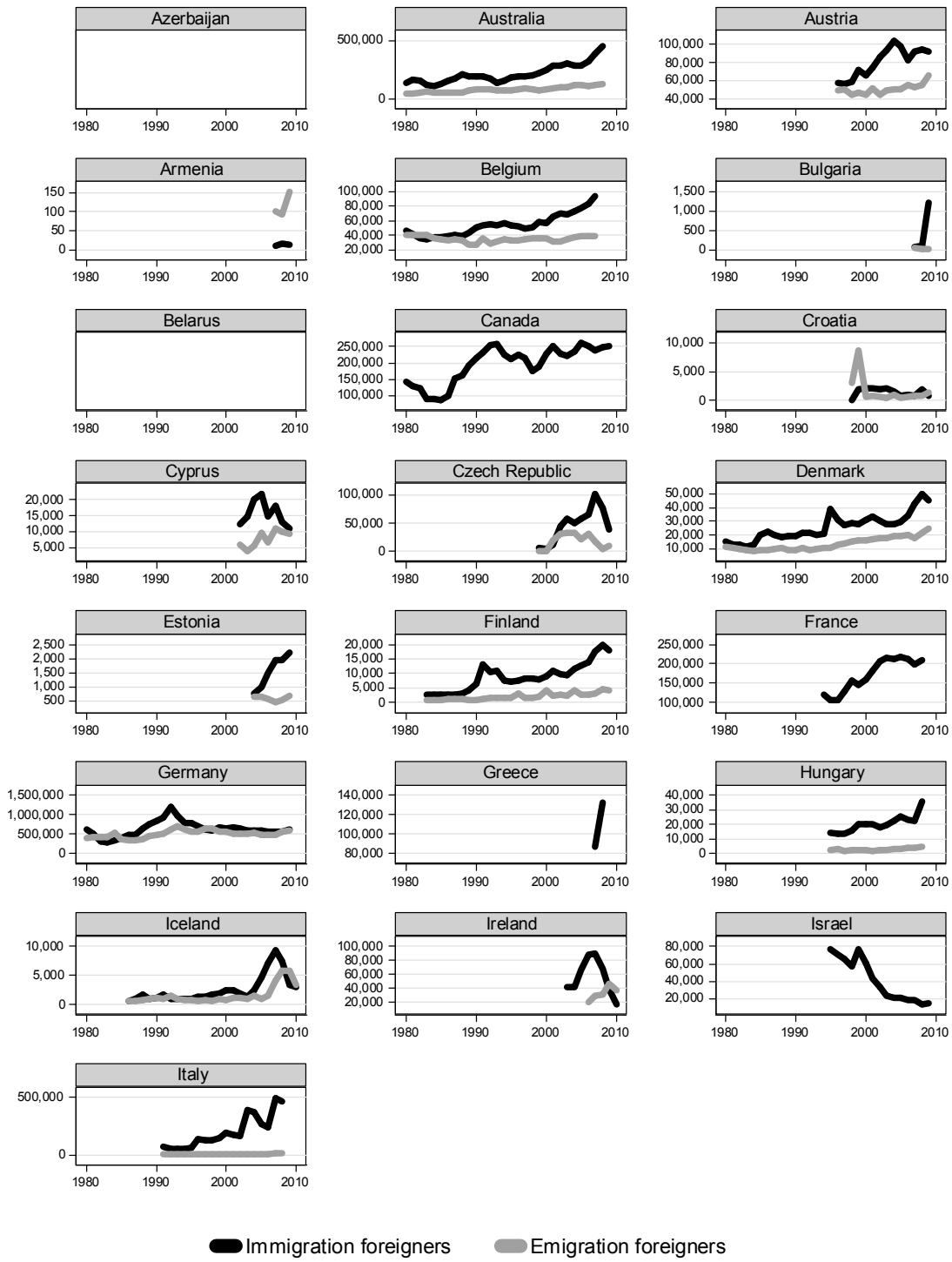
Annex III (continued)

Note: The trends are displayed only when both the number of foreigners and the number of citizens were available.



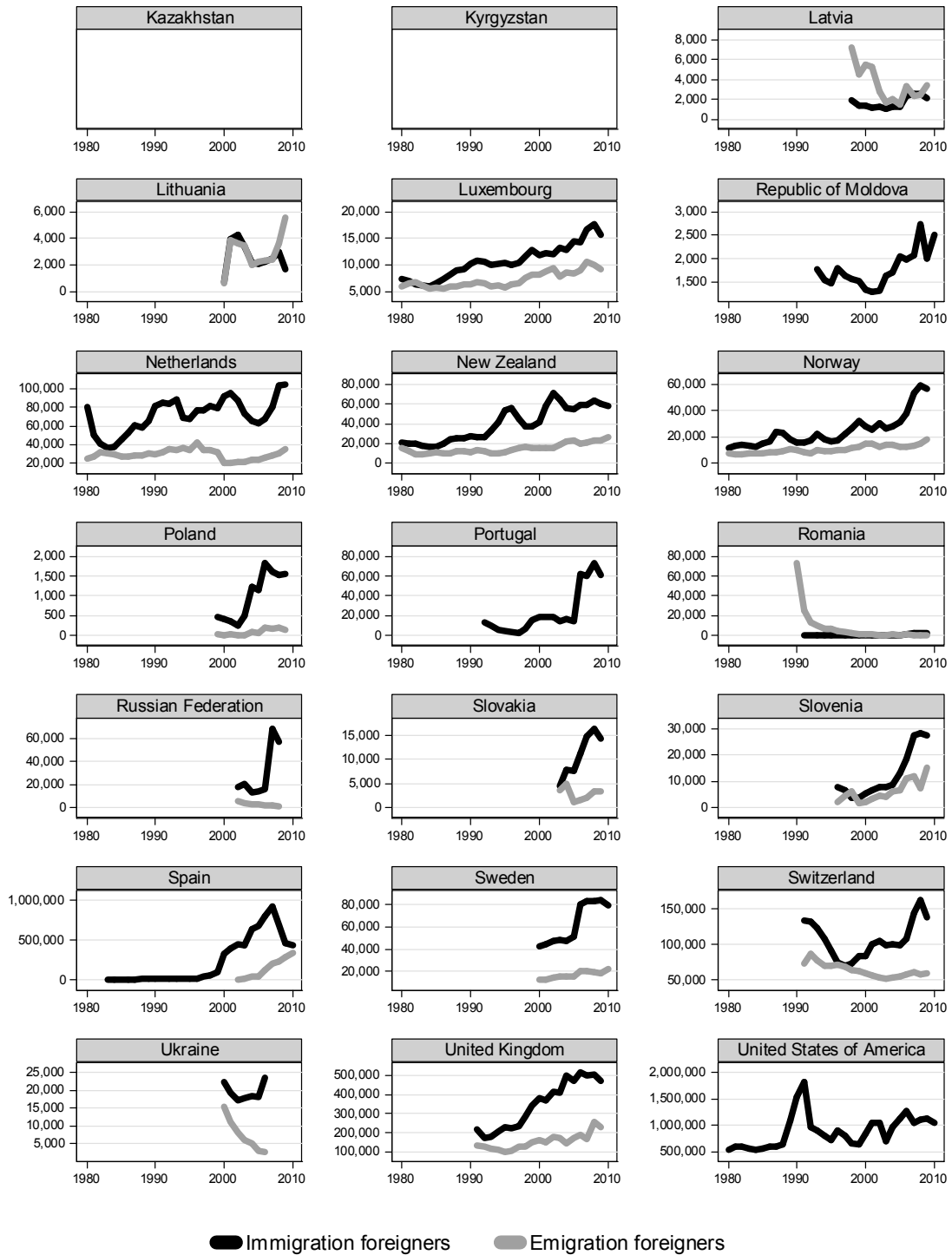
ANNEX IV MIGRATION TRENDS SINCE 1980: IMMIGRATING AND EMIGRATING FOREIGNERS

Note: The trends are displayed only when the number of immigrating or emigrating foreigners was available.



Annex IV (continued)

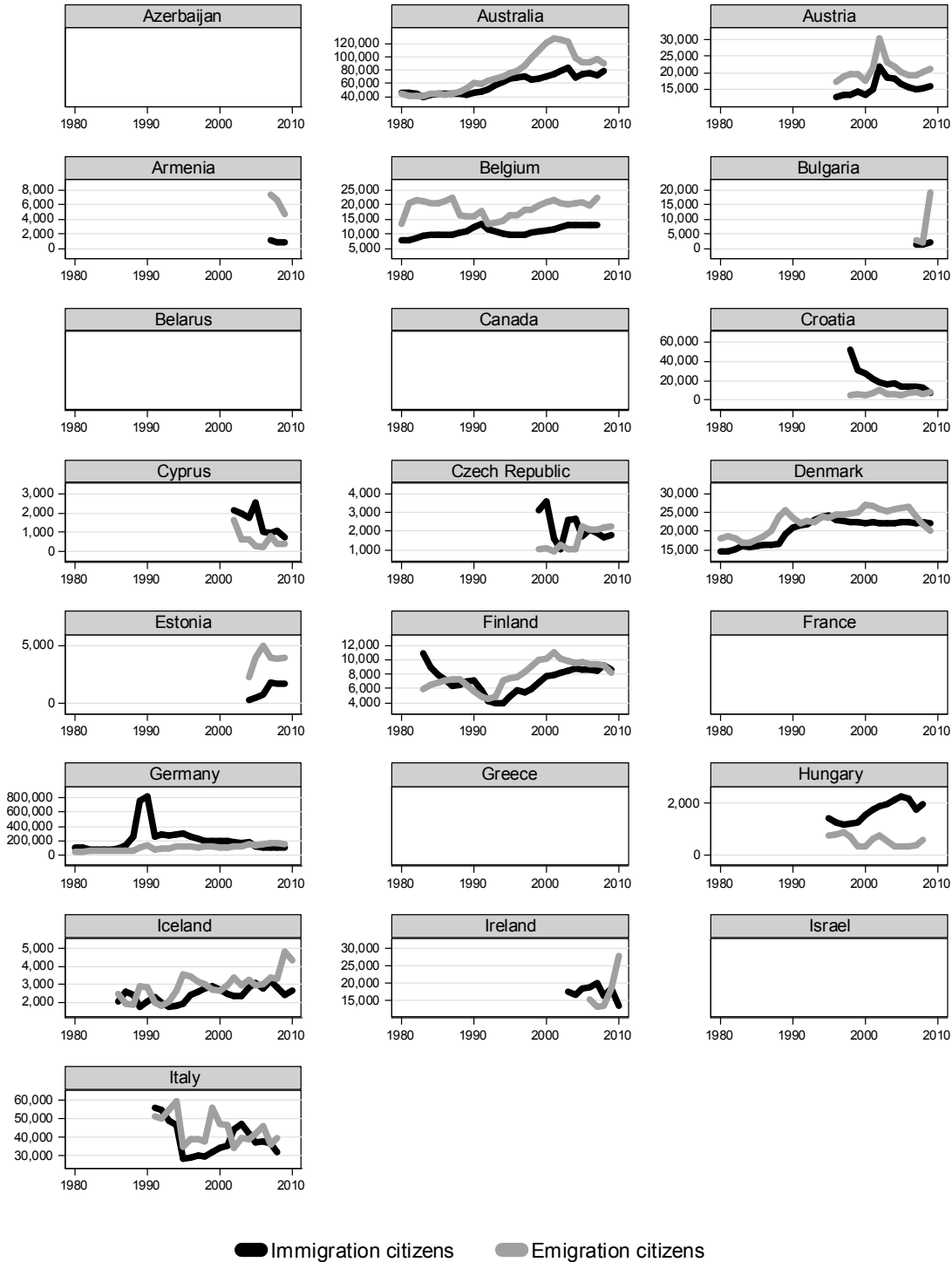
Note: The trends are displayed only when the number of immigrating or emigrating foreigners was available.



ANNEX V

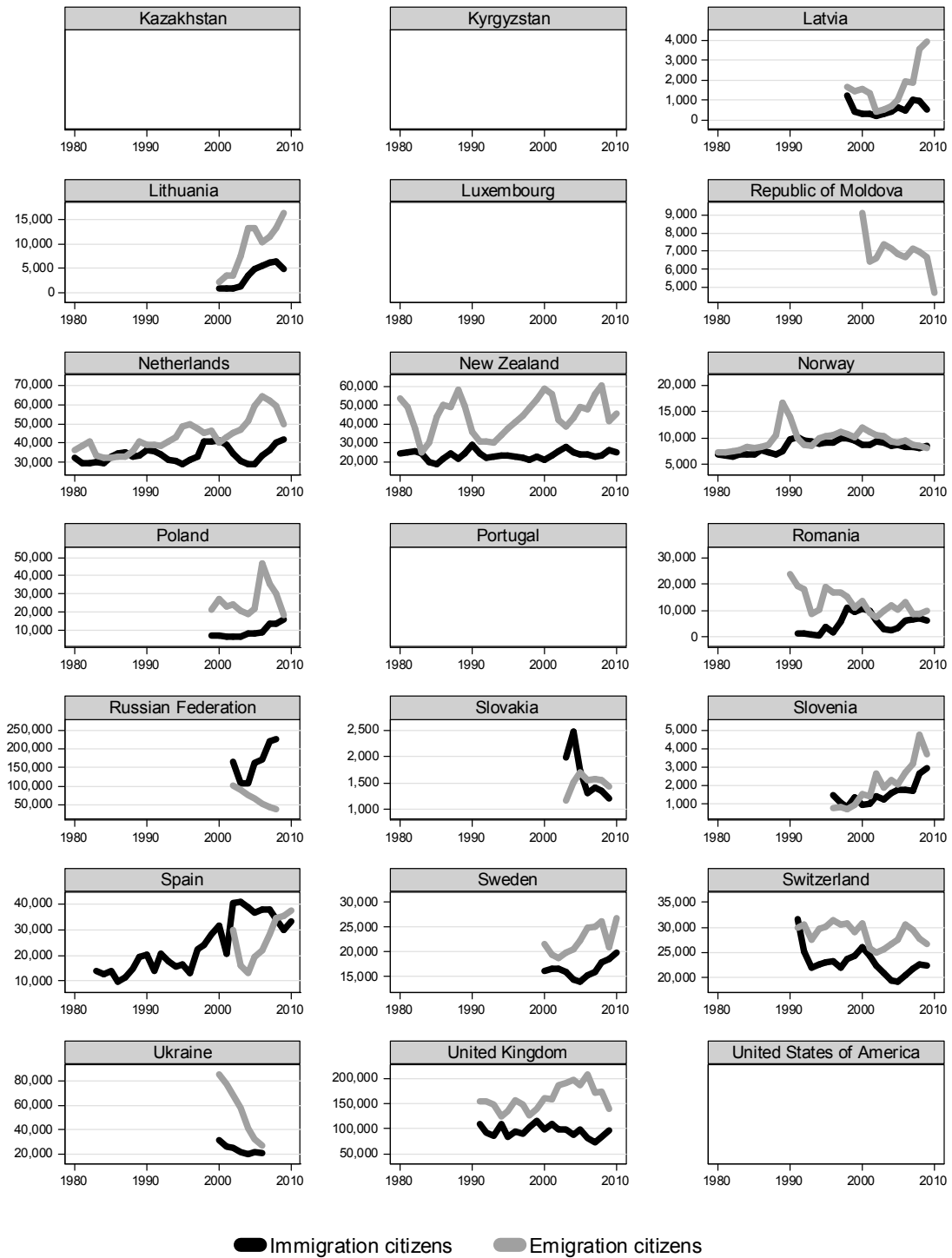
MIGRATION TRENDS SINCE 1980: IMMIGRATING AND EMIGRATING CITIZENS

Note: The trends are displayed only when the number of immigrating or emigrating citizens was available.



Annex V (continued)

Note: The trends are displayed only when the number of immigrating or emigrating citizens was available.





United Nations
Department of Economic and Social Affairs
POPULATION DIVISION

INTERNATIONAL MIGRATION FLOWS TO AND FROM SELECTED COUNTRIES:
THE 2010 REVISION
 POP/DB/MIG/Flow/Rev.2010

Copyright © United Nations 2011
 All rights reserved

Order Form

<i>Qty</i>	<i>Item</i>	<i>Price (in US\$)</i>
	International Migration Flows to and from Selected Countries: The 2010 Revision	\$ <u>150.00</u>
	Total:	\$ <u> </u>

Ship to: (Please print clearly)

Name: _____

Institution: _____

Address: _____

Telephone: _____ **Fax:** _____

NOTES

1. Data contained in the above data sets are copyrighted by the United Nations. No portion of the data files contained in CD-ROM can be reproduced, distributed or used to prepare derivative works or for commercial purposes without express permission of the United Nations. For further information, please contact the Director, Population Division, Department of Economic and Social Affairs, United Nations (Room DC2-1950), New York, NY 10017, United States of America; fax number (+1 212) 963-2147 or (+1 212) 963-2638.
2. The data are in EXCEL readable files.
3. The Order Form should be accompanied by a Cheque or an International Money Order in **United States Dollars drawn on a United States Bank** for the correct amount, made payable to the UNITED NATIONS POPULATION DIVISION, and mailed to:

The Director, Population Division/DESA, United Nations, DC2-1950, New York, NY 10017, USA.