



Trafficking in Persons

**United Nations Expert Group Meeting on
International Migration and Development**

(July, 2005)

by

Irena Omelaniuk

Migration Adviser, The World Bank



Trafficking Defined

- 3(A) Trafficking in persons shall mean the recruitment, transportation, transfer, harbouring or receipt of persons, by means of the threat or use of force or other forms of coercion, of abduction, of fraud, of deception, of the abuse of power or of a position of vulnerability or of the giving or receiving of payments or benefits to achieve the consent of a person having control over another person, for the purpose of exploitation. Exploitation shall include, at a minimum, the exploitation of the prostitution of others or other forms of sexual exploitation, forced labour or services, slavery or practices similar to slavery, servitude or the removal of organs



ROOT CAUSES

- **Poverty (particularly in rural areas)***
- **Lack of opportunities/unemployment**
- **Conflicts/displacement**
- **Lack of information on safe migration**
- **Social and cultural practice**
 - **marginalization/subordination of women and girls**
 - **Entrusting children to friends or relatives**
 - **sale into marriage by family**
- **Demand (military sites, demography)**



Trafficking and Development

- **Re-directs benefits of migration**
 - **depletes human capital**
 - **reduces “returns” to home country**
 - **leads to breakdown of families**
 - **forces children to work**
 - **reinforces illiteracy/poverty cycle**
 - **perpetuates social inequalities**
 - **cost to public health**
 - **cost to security**



IOM Counter Trafficking Database

Counter Trafficking (CTM)

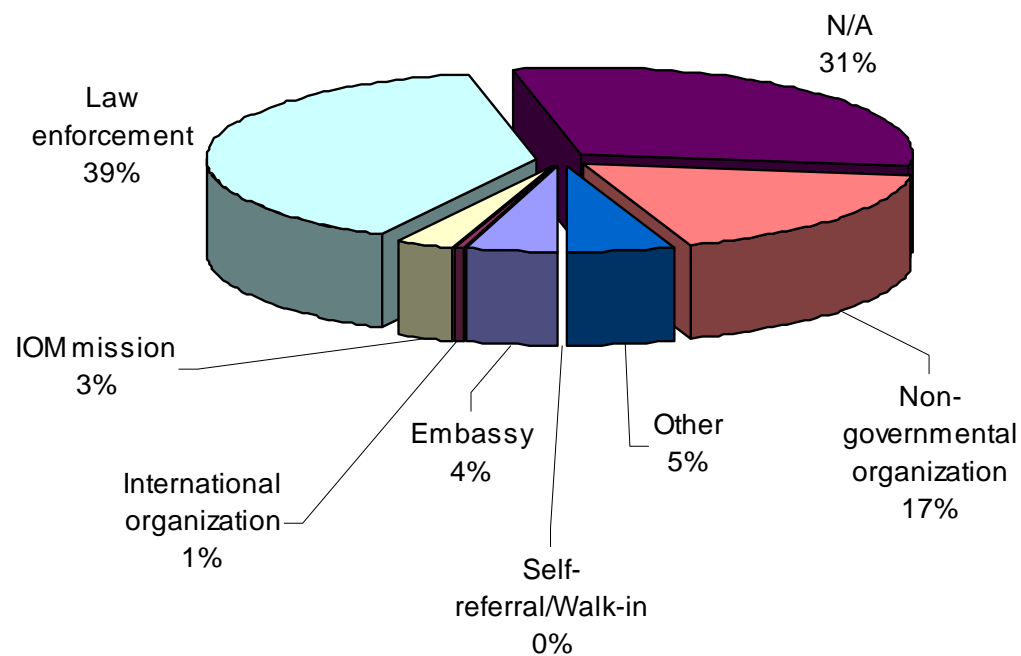
- Return and Reintegration Assistance -



Cases assisted by IOM in January 2001 - June 2005



Type of Referring Organization



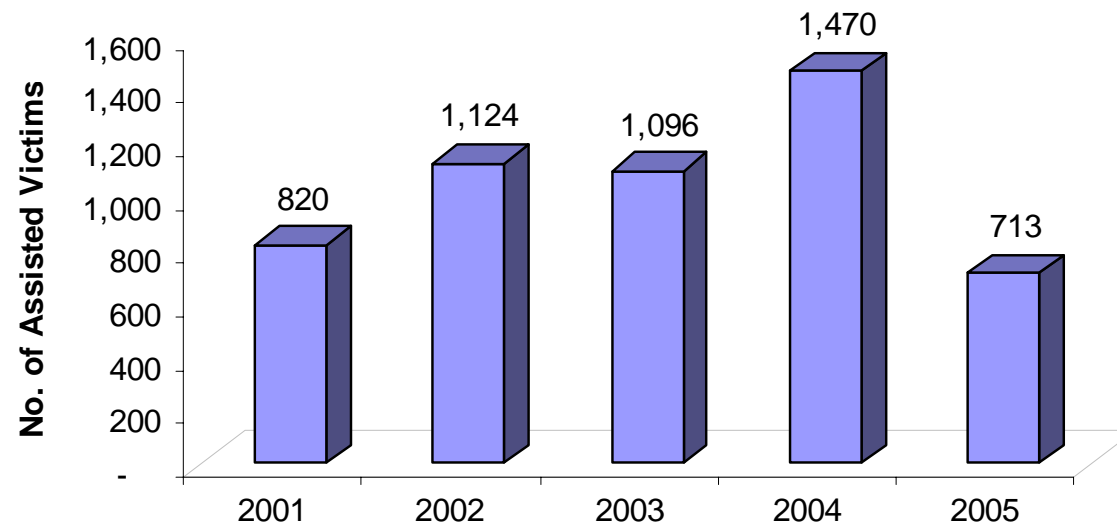
Referring Organization	Number	Percentage
Embassy	228	4.37%
International organization	36	0.69%
IOM mission	149	2.85%
Law enforcement	2,025	38.77%
N/A	1,602	30.67%
Non-governmental organization	908	17.38%
Other	273	5.23%
Self-referral/Walk-in	2	0.04%
Total	5,223	100%



OVERVIEW

No. of Victims Assisted by Year

Year 2001- June 2005 - 5,223 Cases



Year	Number	Percentage
2001	820	15.70%
2002	1,124	21.52%
2003	1,096	20.98%
2004	1,470	28.14%
2005	713	13.65%
Total	5,223	100.00%



Countries where Victims were trafficked to

Country/Province of Destination	Number	%	Country/Province of Destination	Number	%	Country/Province of Destination	Number	%
ALBANIA	244	4.67%	GERMANY	31	0.59%	PERU	2	0.04%
ARGENTINA	66	1.26%	GHANA	151	2.89%	PHILIPPINES	1	0.02%
ARMENIA	6	0.11%	GREECE	21	0.40%	POLAND	18	0.34%
AUSTRIA	12	0.23%	GUATEMALA	10	0.19%	PORTUGAL	3	0.06%
AZERBAIJAN	5	0.10%	GUINEA	3	0.06%	ROMANIA	20	0.38%
BELARUS	445	8.52%	HONG KONG	2	0.04%	RUSSIAN FEDERATION	1	0.02%
BELGIUM	16	0.31%	INDONESIA	1	0.02%	SINGAPORE	1	0.02%
BOLIVIA	1	0.02%	IRELAND	1	0.02%	SLOVENIA	2	0.04%
BOSNIA AND HERZEGOVINA	409	7.83%	ISRAEL	22	0.42%	SOUTH AFRICA	1	0.02%
BULGARIA	197	3.77%	ITALY	152	2.91%	SPAIN	43	0.82%
COLOMBIA	172	3.29%	JAPAN	1	0.02%	SWITZERLAND	8	0.15%
COTE D'IVOIRE	35	0.67%	KAZAKHSTAN	35	0.67%	SYRIAN ARAB REPUBLIC	1	0.02%
CROATIA	31	0.59%	KOREA, REPUBLIC OF	8	0.15%	TAJIKISTAN	3	0.06%
CYPRUS	1	0.02%	AND MONTENEGRO	517	9.90%	THAILAND	5	0.10%
CZECH REPUBLIC	2	0.04%	KYRGYZSTAN	122	2.34%	TURKEY	137	2.62%
DOMINICAN REPUBLIC	4	0.08%	LEBANON	1	0.02%	UKRAINE	359	6.87%
EAST TIMOR	1	0.02%	LIBERIA	1	0.02%	UNITED ARAB EMIRATES	134	2.57%
ECUADOR	1	0.02%	YUGOSLAV REPUBLIC OF	637	12.20%	UNITED KINGDOM	4	0.08%
EGYPT	1	0.02%	MALAYSIA	81	1.55%	UNITED STATES	1	0.02%
ETHIOPIA	2	0.04%	MALI	646	12.37%	Unknown Country	1	0.02%
FRANCE	24	0.46%	MOLDOVA, REPUBLIC OF	293	5.61%	URUGUAY	9	0.17%
GABON	1	0.02%	NETHERLANDS	12	0.23%	UZBEKISTAN	32	0.61%
GEORGIA	12	0.23%	NICARAGUA	1	0.02%	Total	5,223	100.00%



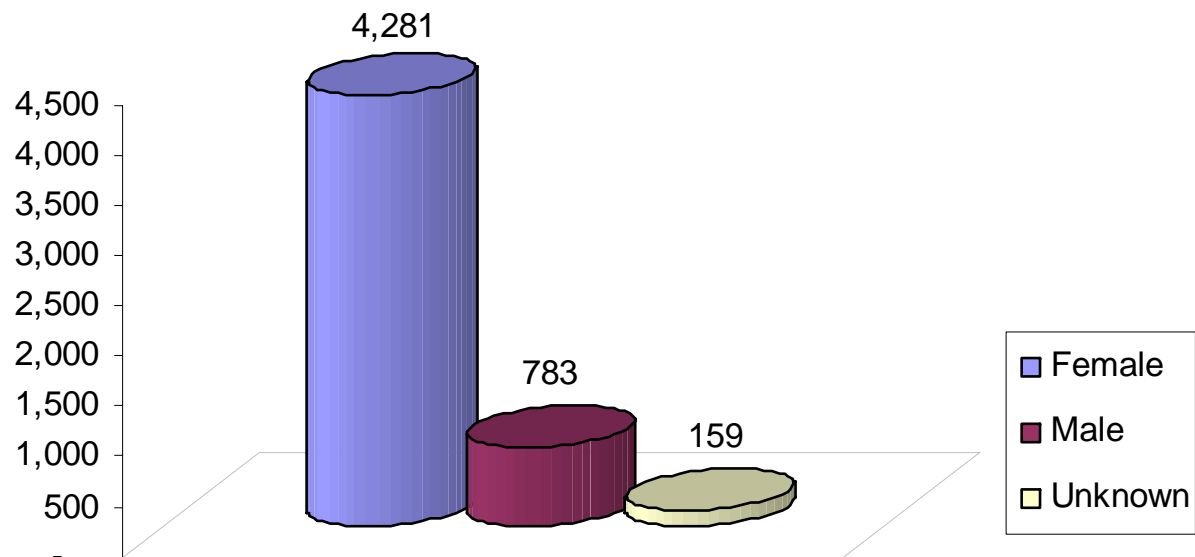
Nationality of Victims

Nationality	Number	Percentage
ALBANIA	120	2.30%
ARGENTINA	2	0.04%
AZERBAIJAN	2	0.04%
BELARUS	460	8.81%
BENIN	19	0.36%
BIH	19	0.36%
BULGARIA	357	6.84%
BURKINA FASO	6	0.11%
CAMBODIA	19	0.36%
CHINA	2	0.04%
COLOMBIA	191	3.66%
CONGO, THE DEMOCRATIC	2	0.04%
COTE D'IVOIRE	4	0.08%
CROATIA	9	0.17%
CZECH REPUBLIC	1	0.02%
DOMINICAN REPUBLIC	64	1.23%
ECUADOR	15	0.29%
EGYPT	1	0.02%
EL SALVADOR	1	0.02%
GEORGIA	7	0.13%
GHANA	151	2.89%
HONDURAS	4	0.08%
HUNGARY	2	0.04%
INDONESIA	62	1.19%
IRAN, ISLAMIC REPUBLIC OF	1	0.02%
KAZAKHSTAN	29	0.56%
KENYA	1	0.02%
KOSOVO	37	0.71%
KYRGYZSTAN	136	2.60%

Nationality	Number	Percentage
LEBANON	2	0.04%
LITHUANIA	2	0.04%
MACAU	5	0.10%
MACEDONIA, THE FORMER	1	0.02%
MALDIVES	2	0.04%
MALI	648	12.41%
MOLDOVA, REPUBLIC OF	1055	20.20%
MONTENEGRO	9	0.17%
MOROCCO	1	0.02%
NIGERIA	6	0.11%
PARAGUAY	2	0.04%
PERU	5	0.10%
PHILIPPINES	1	0.02%
POLAND	2	0.04%
ROMANIA	763	14.61%
RUSSIAN FEDERATION	74	1.42%
SERBIA	43	0.82%
SLOVAKIA	1	0.02%
SLOVENIA	1	0.02%
SRI LANKA	1	0.02%
TAJIKISTAN	5	0.10%
TOGO	1	0.02%
TURKMENISTAN	2	0.04%
UGANDA	1	0.02%
UKRAINE	624	11.95%
Unknown Country	5	0.10%
UZBEKISTAN	236	4.52%
VIET NAM	1	0.02%
Total	5223	100.00%



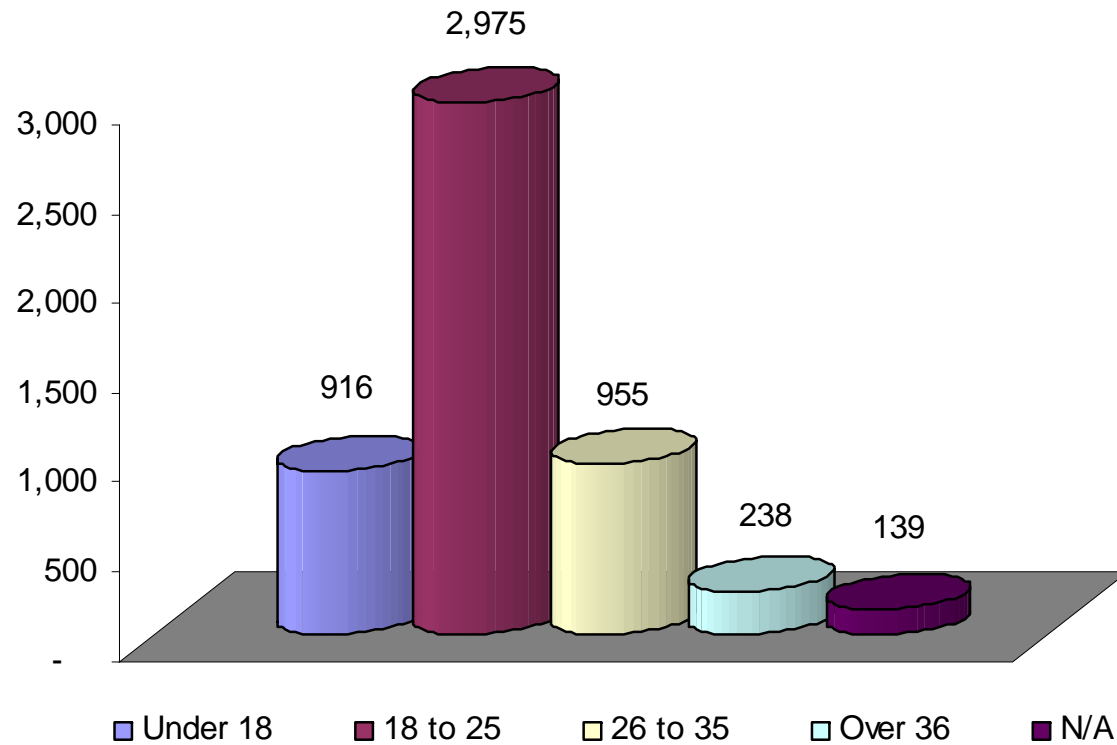
Gender of the Victims



Sex	Number	Percentage
Female	4,281	81.96%
Male	783	14.99%
Unknown	159	3.04%
Total	5,223	100.00%



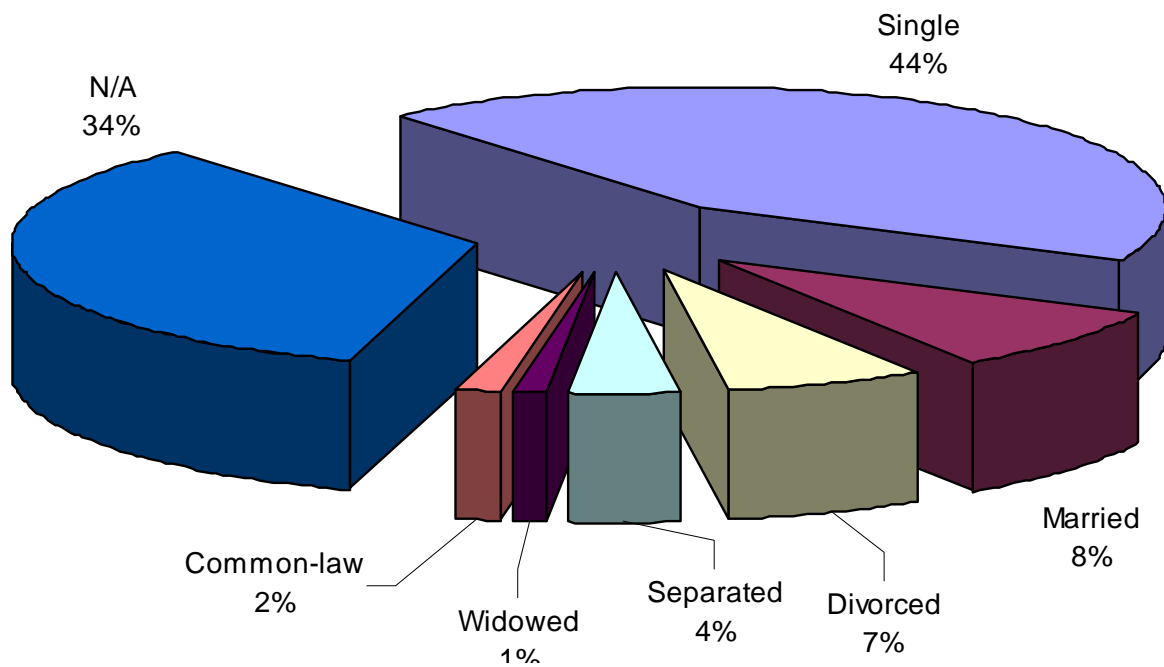
Age Range



Age Range	Number	Percentage
Under 18	916	17.54%
18 to 25	2,975	56.96%
26 to 35	955	18.28%
Over 36	238	4.56%
N/A	139	2.66%
Total	5,223	100.00%



Marital Status



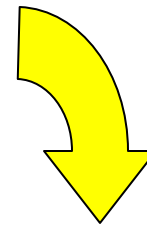
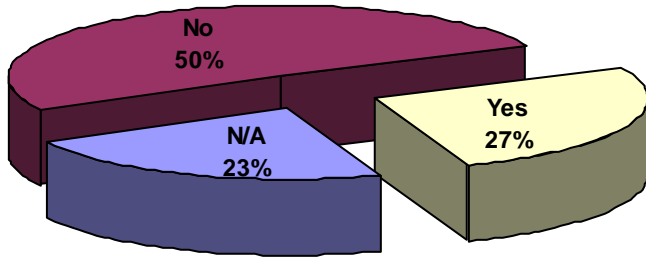
Marital Status	Number	Percentage
Single	2,270	43.46%
Married	437	8.37%
Divorced	368	7.05%
Separated	210	4.02%
Widowed	45	0.86%
Common-law	99	1.90%
N/A	1,794	34.35%
Total	5,223	100.00%



Parenthood

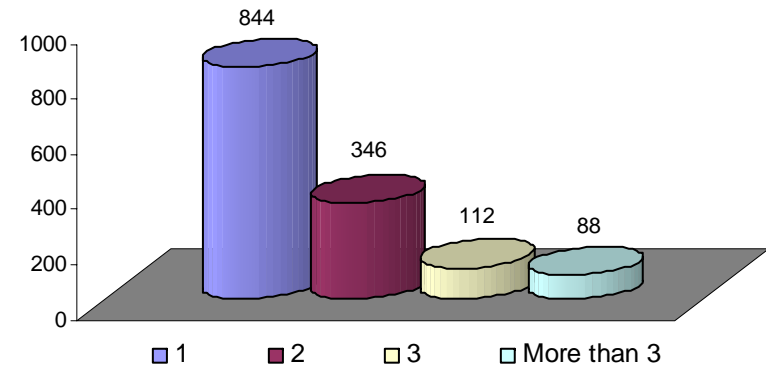
a. Does the Victim have children?

Have Children?	Number	Percentage
N/A	1,183	22.65%
No	2,650	50.74%
Yes	1,390	26.61%
Total	5,223	100.00%



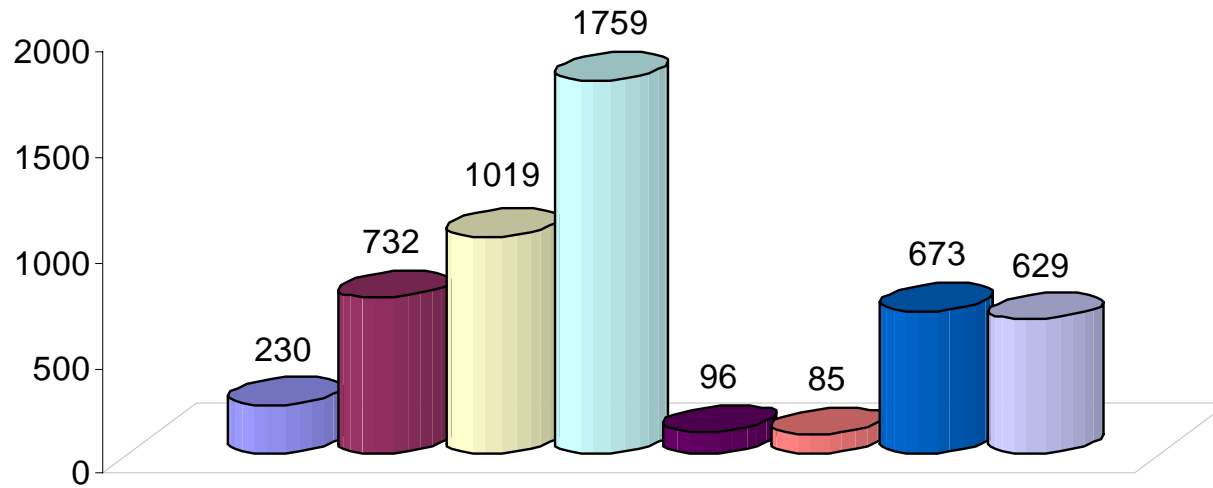
b. If Yes, how many?

If Yes, how many?	Number	Percentage
1	844	60.72%
2	346	24.89%
3	112	8.06%
More than 3	88	6.33%
Total	1,390	100.00%





Education



■ College/University
■ N/A
■ Primary school

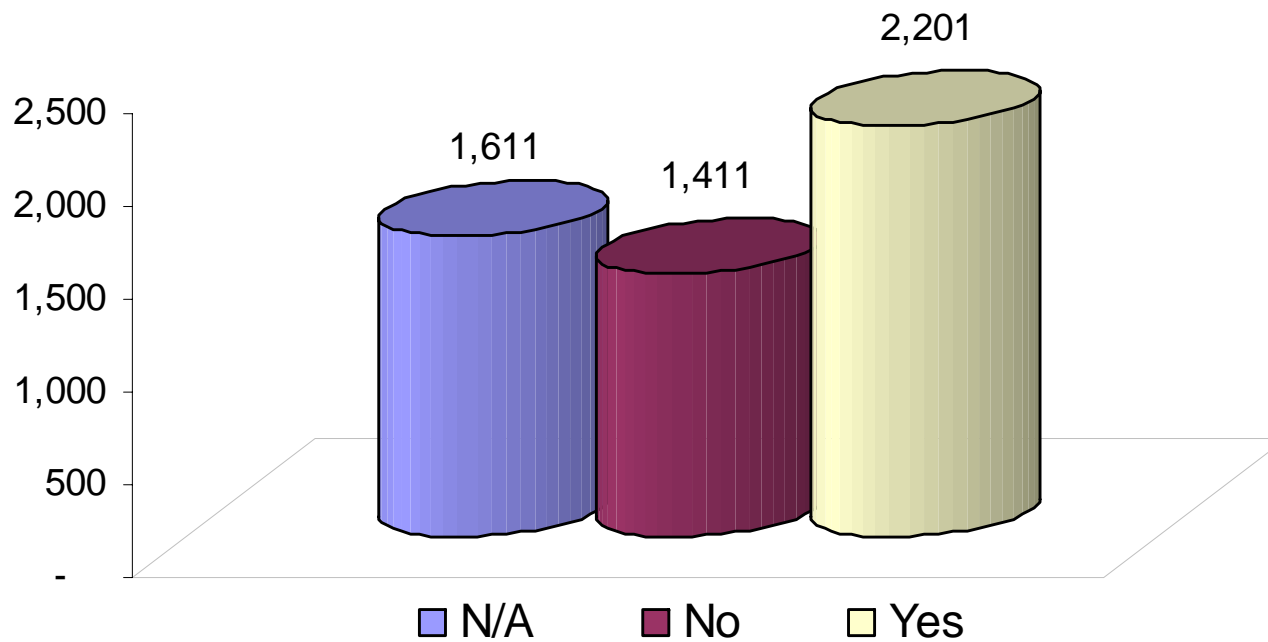
■ High school
■ None
■ Trade/Technical/Vocational school

■ Middle/Elementary school
■ Other

Education Level	Number	Percentage
College/University	230	4.40%
High school	732	14.01%
Middle/Elementary school	1019	19.51%
N/A	1759	33.68%
None	96	1.84%
Other	85	1.63%
Primary school	673	12.89%
Trade/Technical/Vocational school	629	12.04%
Total	5,223	100.00%



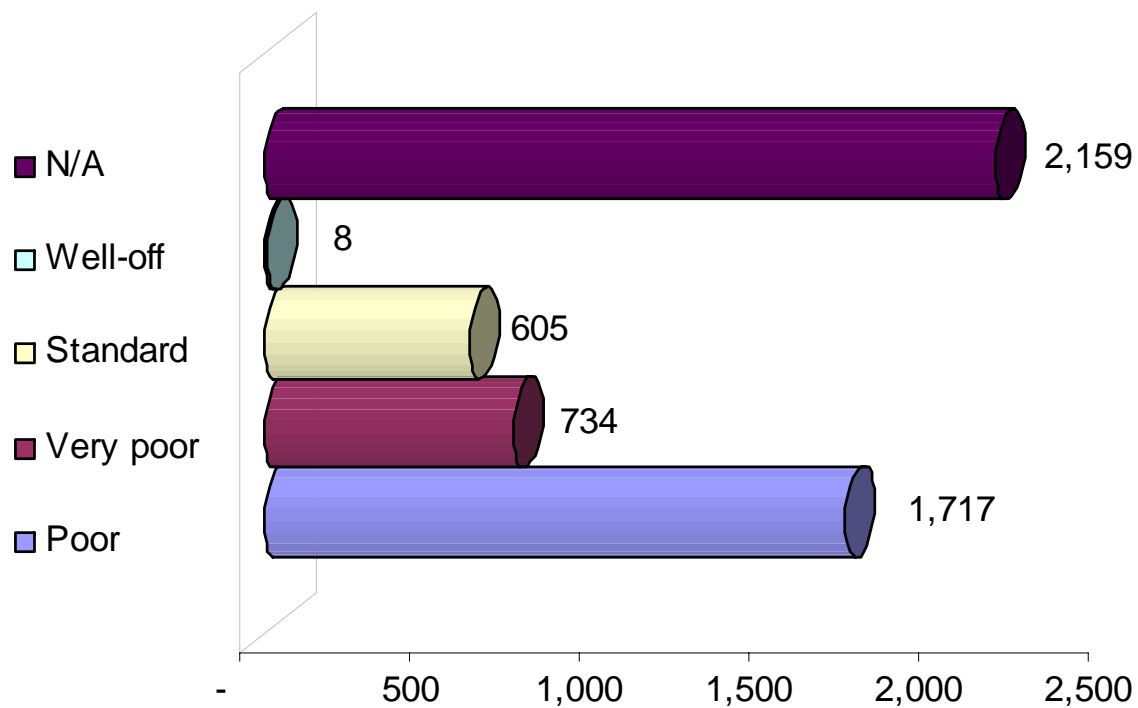
Work experience before being trafficked?



Work Experience	Number	Percentage
N/A	1,611	30.84%
No	1,411	27.02%
Yes	2,201	42.14%
Total	5,223	100.00%



Family Economic Status



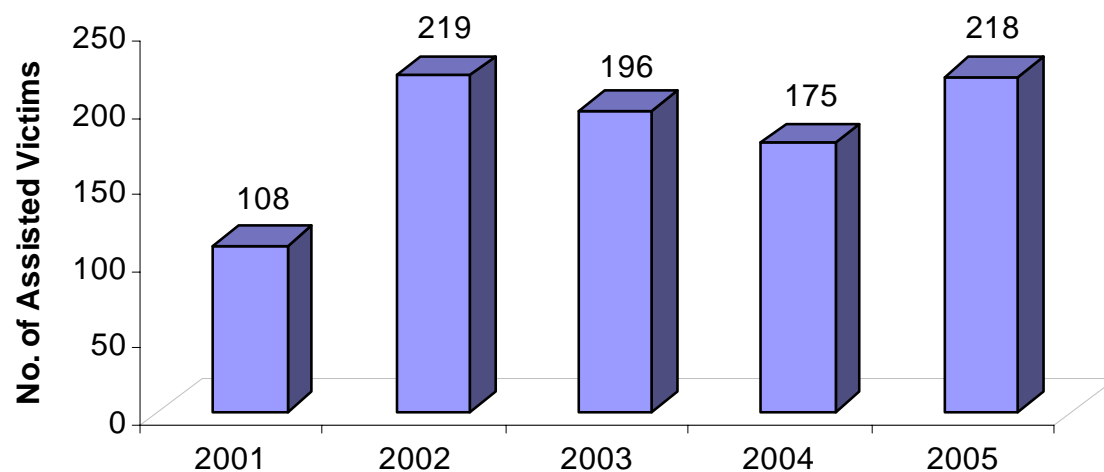
Family Economic Status	Number	Percentage
Poor	1,717	32.87%
Very poor	734	14.05%
Standard	605	11.58%
Well-off	8	0.15%
N/A	2,159	41.34%
Total	5,223	100.00%



Trafficked children

No. of Victims Assisted by Year

Year 2001- June 2005 - 916 Minor Cases



Years	Number	Percentage
2001	108	11.79%
2002	219	23.91%
2003	196	21.40%
2004	175	19.10%
2005	218	23.80%
Total	916	100.00%



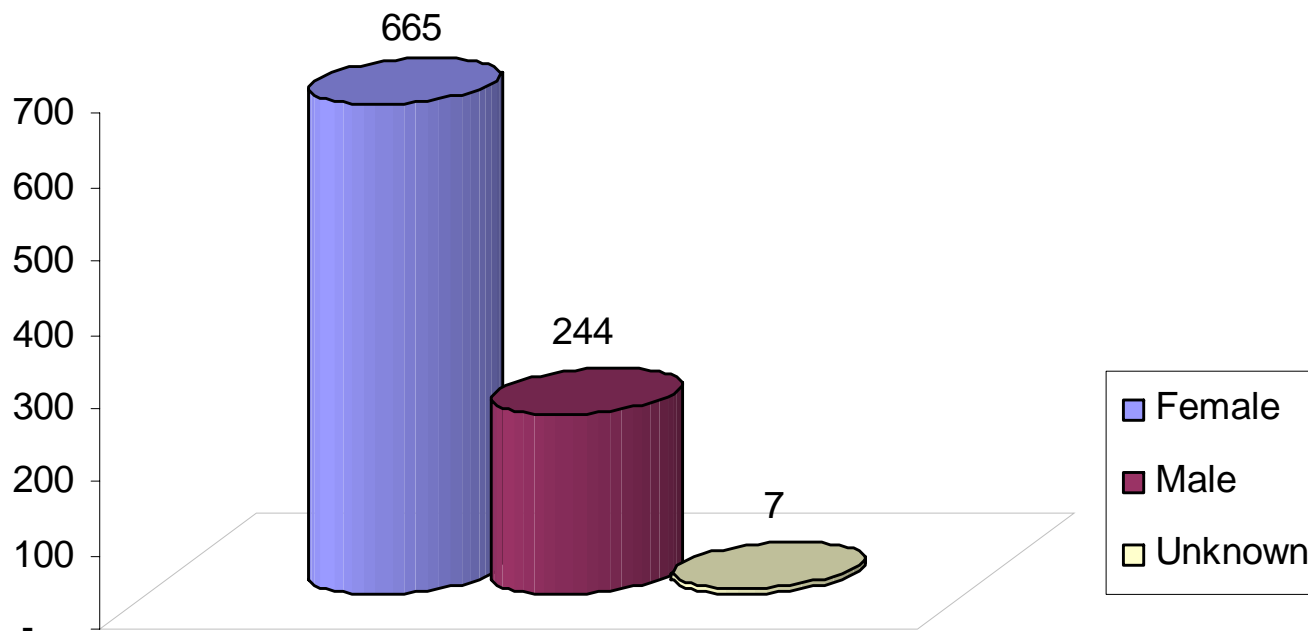
Nationality of Child Victims

Nationality	Number	Percentage
ALBANIA	40	4.37%
ARGENTINA	1	0.11%
BELARUS	33	3.60%
BENIN	16	1.75%
BOSNIA AND HERZEGOVINA	8	0.87%
BULGARIA	100	10.92%
BURKINA FASO	6	0.66%
CAMBODIA	5	0.55%
COLOMBIA	10	1.09%
DOMINICAN REPUBLIC	1	0.11%
ECUADOR	11	1.20%
GEORGIA	1	0.11%
GHANA	149	16.27%
HONDURAS	4	0.44%
INDONESIA	2	0.22%
Iran	1	0.11%

Nationality	Number	Percentage
KOSOVO, PROVINCE OF	15	1.64%
KYRGYZSTAN	25	2.73%
MACAU	2	0.22%
MACEDONIA, THE FORMER	1	0.11%
MALDIVES	1	0.11%
MALI	172	18.78%
MOLDOVA, REPUBLIC OF	92	10.04%
MONTENEGRO, PROVINCE	7	0.76%
PARAGUAY	2	0.22%
ROMANIA	146	15.94%
RUSSIAN FEDERATION	8	0.87%
SERBIA, PROVINCE OF	15	1.64%
SLOVAKIA	1	0.11%
TAJIKISTAN	1	0.11%
UKRAINE	26	2.84%
UZBEKISTAN	14	1.53%
Total	916	100.00%



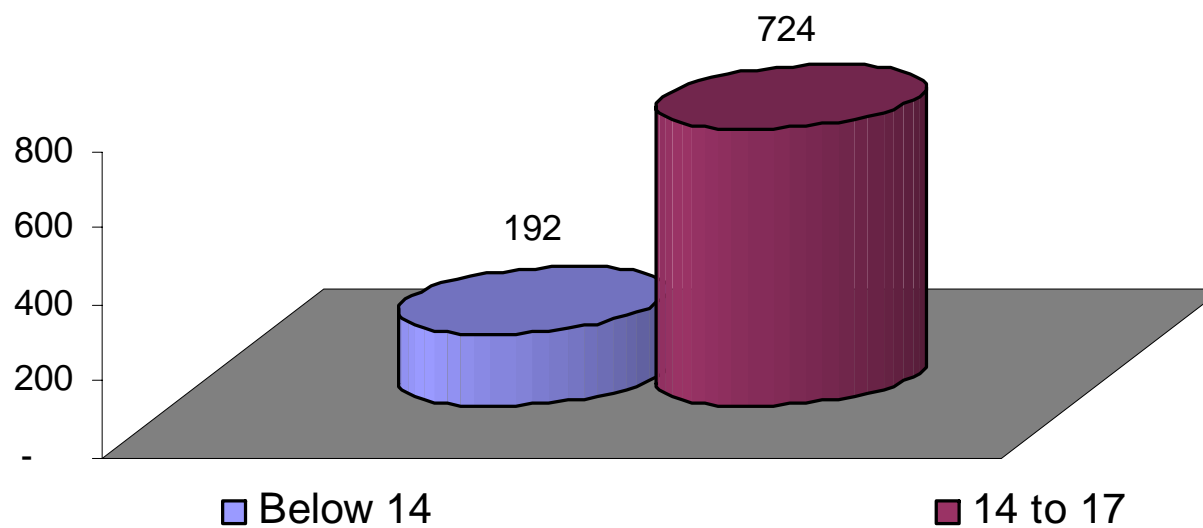
Gender of Child Victims



Sex	Number	Percentage
Female	665	72.60%
Male	244	26.64%
Unknown	7	0.76%
Total	916	100.00%



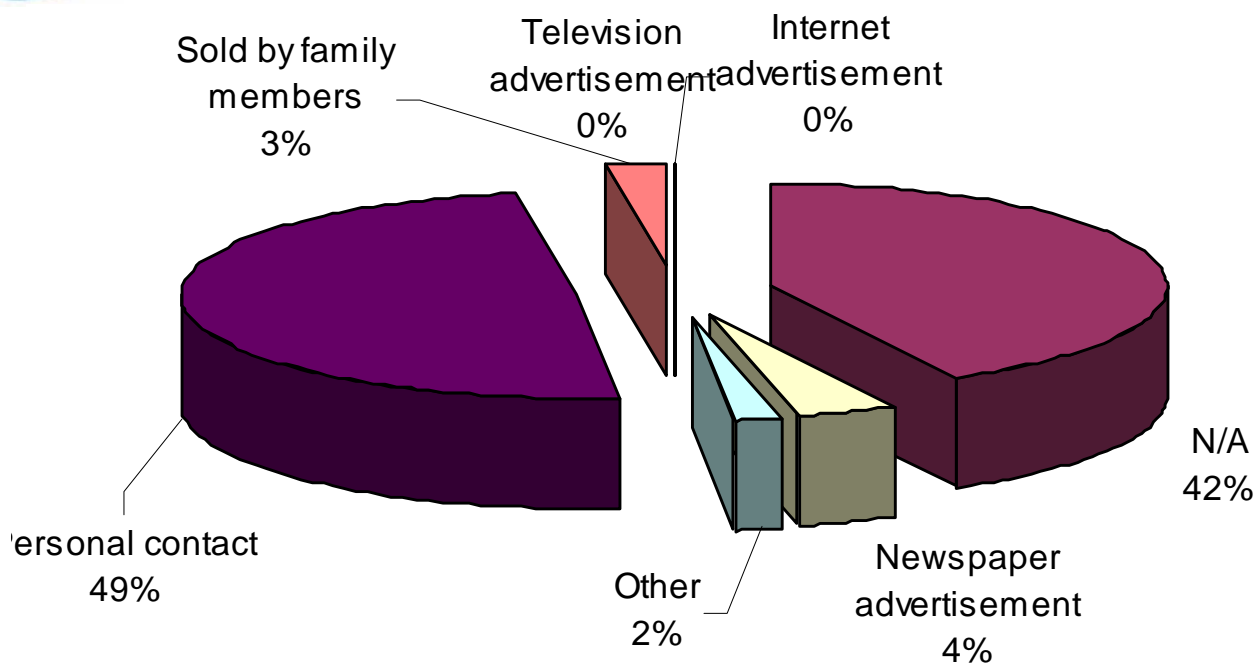
Age Range of Children



Age Range	Number	Percentage
Below 14	192	20.96%
14 to 17	724	79.04%
Total	916	100.00%



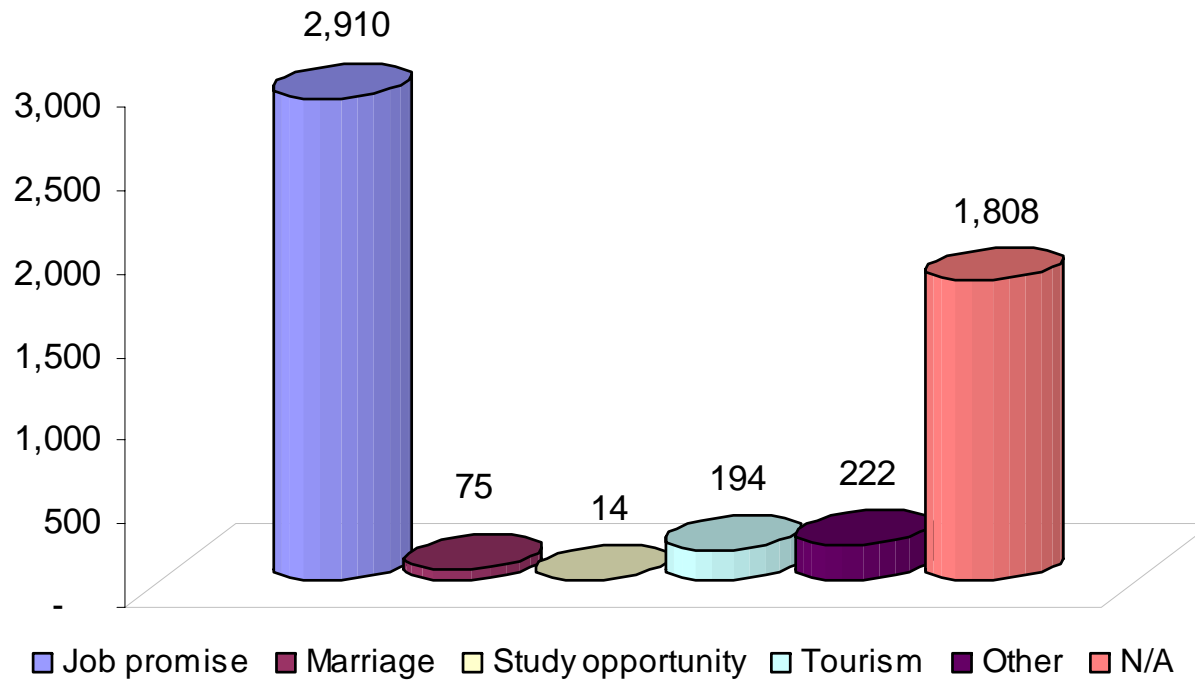
Recruitment



Recruitment method	Number	Percentage
Internet advertisement	4	0.08%
N/A	2,204	42.20%
Newspaper advertisement	222	4.25%
Other	97	1.86%
Personal contact	2,560	49.01%
Sold by family members	134	2.57%
Television advertisement	2	0.04%
Total	5,223	100.00%



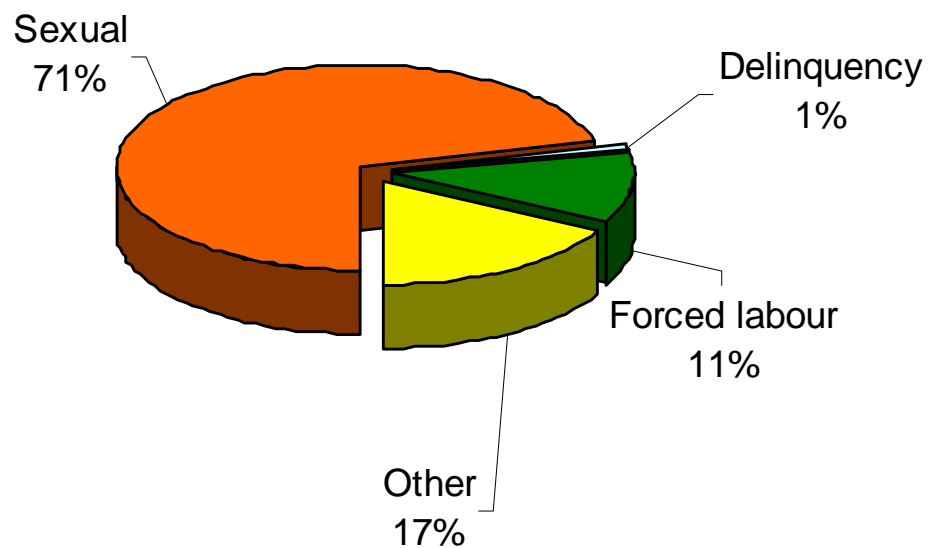
Proposal Before Leaving Home Country



What was the victim proposed?	Number	Percentage
Job promise	2,910	55.72%
Marriage	75	1.44%
Study opportunity	14	0.27%
Tourism	194	3.71%
Other	222	4.25%
N/A	1,808	34.62%
Total	5,223	100.00%



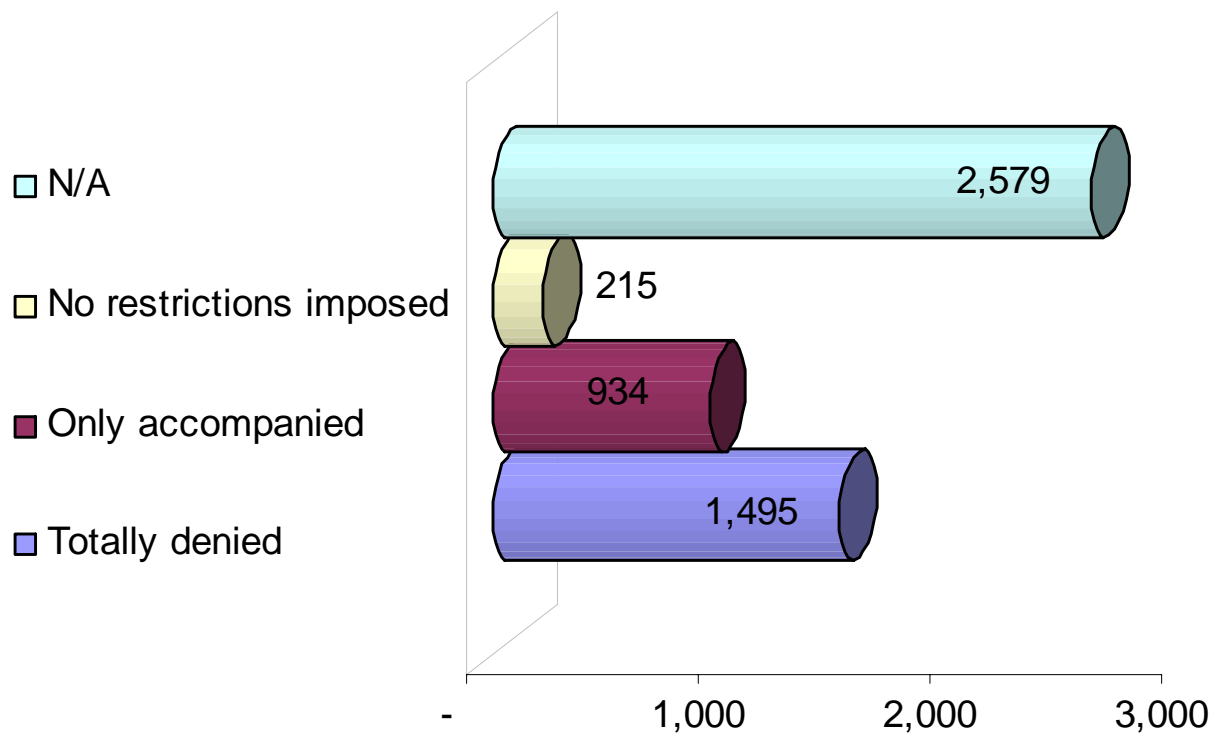
Type of Exploitation at Destination



Type of Exploitation	Number	Percentage
Sexual	3,696	70.76%
Delinquency	56	1.07%
Forced labour	565	10.82%
Other	906	17.35%
Total	5,223	100.00%



Freedom of Movement



Freedom of Movement	Number	Percentage
Totally denied	1,495	28.62%
Only accompanied	934	17.88%
No restrictions imposed	215	4.12%
N/A	2,579	49.38%
Total	5,223	100.00%



Much Study, Little Legislative Action?

- **Lack of resources?**
- **Lack of political will?**
- **Lack of knowledge?*****
- **Lack of persuasive, strategic, collaborative research?**
- **Methodology???**



Future steps

- more empirical data/research**
- analysis of poverty, gender, labor markets, vulnerability/exclusion, family, community**
- model legislation**
- capacity building of NGOs, police, judiciary, teachers, diplomats etc**
- information campaigns/hotlines**
- cross-border collaboration**
- witness protection/legal status**
- better coordination of agencies**